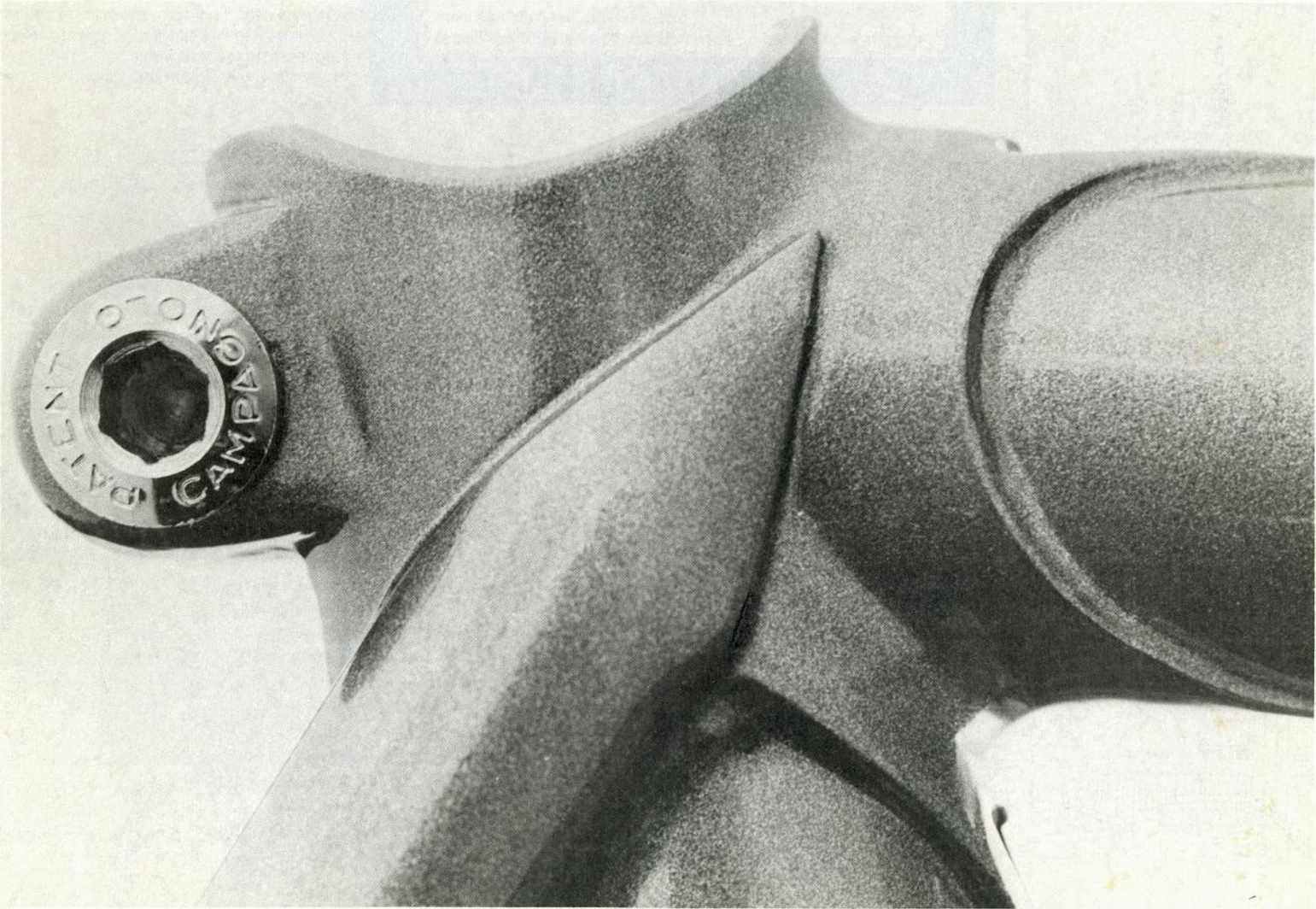


PROTEUS GUIDE TO FRAMES AND FRAMEBUILDING PRODUCTS



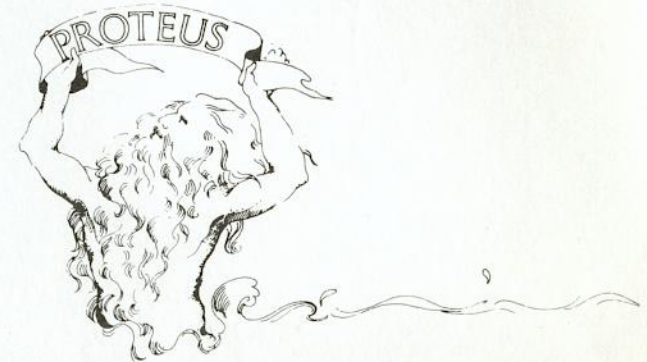
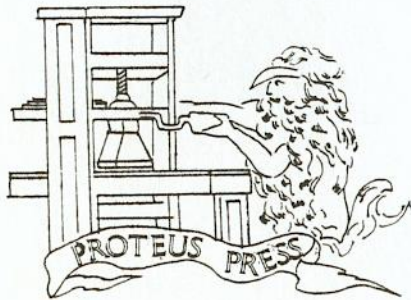
THE NEW WAVE IN CYCLES

PROTEUS GUIDE TO FRAMES AND FRAMEBUILDING PRODUCTS

WARRANTY

All Proteus frames, complete bicycles, tools, frame building kits, paint kits, and all other frame supplies are fully covered by our conditional warranty. In addition to Proteus made products, all parts that we import from around the world are also recognized by this guarantee. We thank you for choosing Proteus Products and hope that we have helped in your cycling needs.

PROTEUS DESIGN, INC. PROTEUS/CENTURY PROTEUS PRESS



Proteus Design, Inc. is a young company dedicated to providing only the highest quality products. We are striving to offer a new level of excellence in both the quality of design and product execution. We view our bicycles and kits as sophisticated tools which will expand the range of your cycling experiences.

There are many people using our products and discovering the value of superior performance and greater longevity. We hear from many of you, of your experiences while cycling or building your bicycle and we value this communication. It is our most important input into the constant program of re-evaluation and development of our goods.

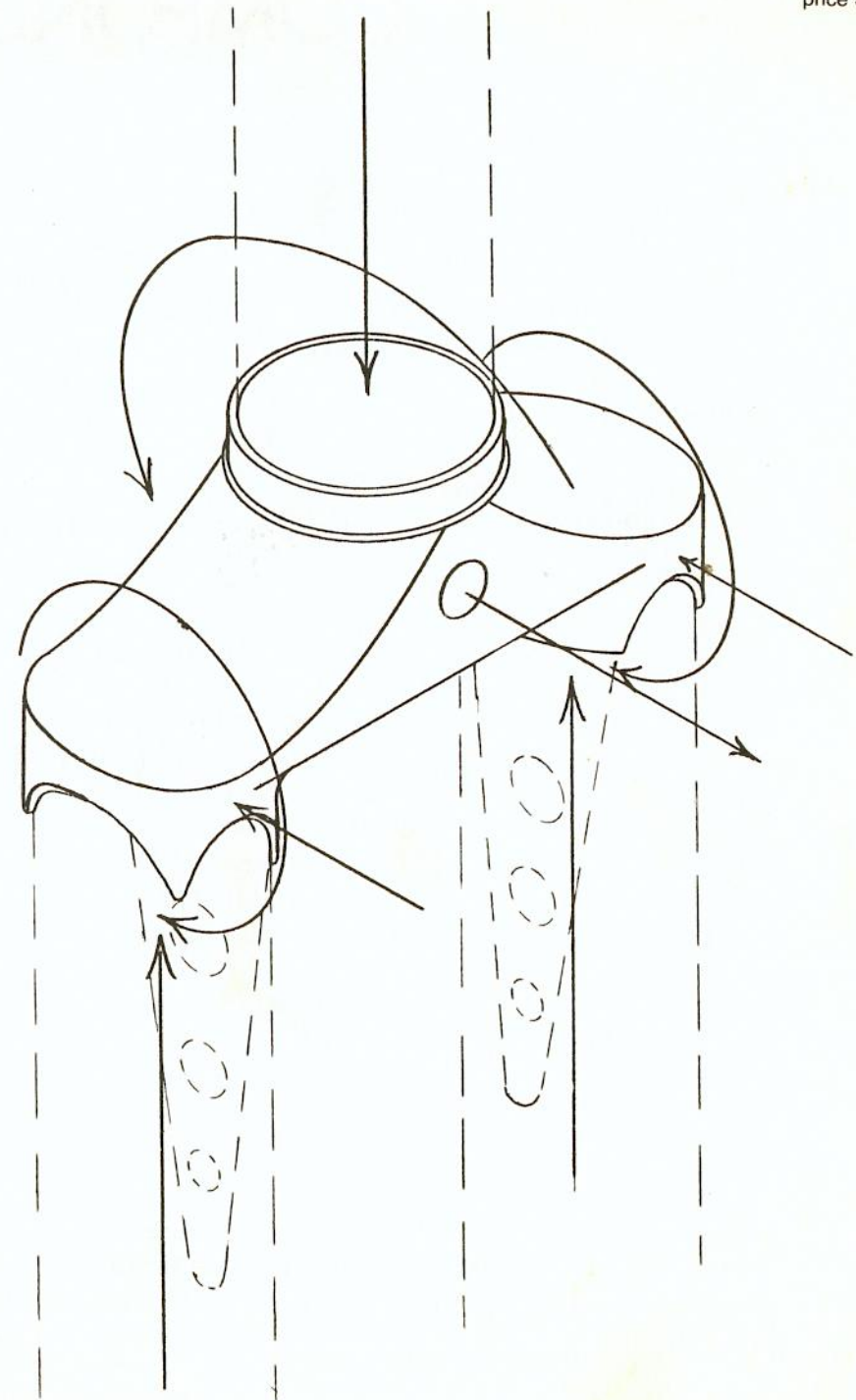
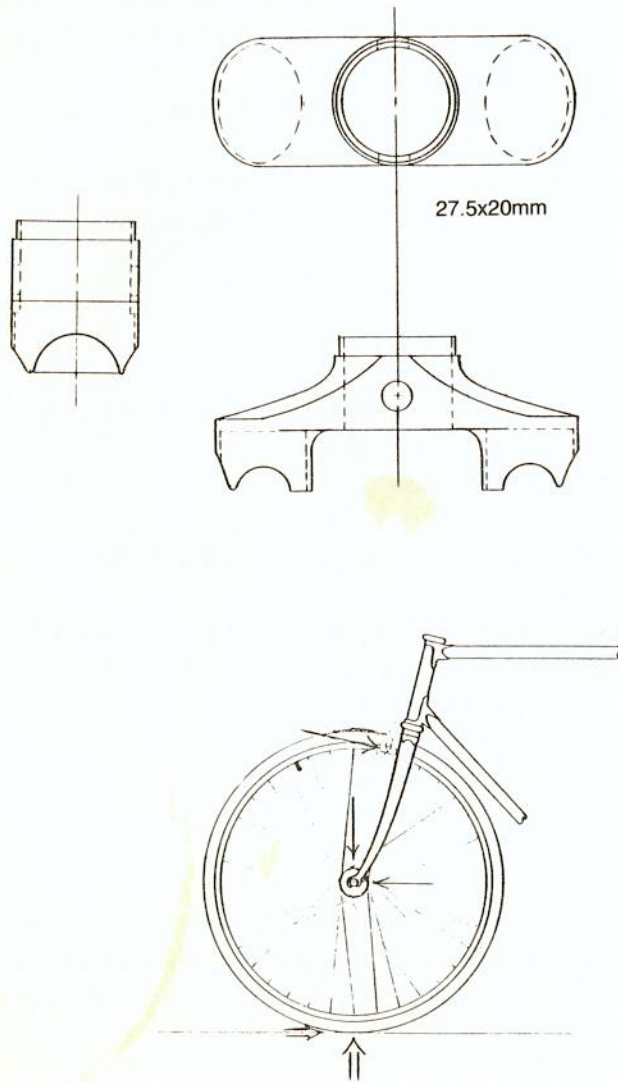
It's the small things that make it work, attention to detail whether it is a large commercial account or a small retail order. It is this understanding of the bicycle market as a whole that allows us to keep giving superior service and top quality products.

The Proteus fork crown is designed to resist undesirable fork deformation under all stress states short of full impact. The most severe continuous stress to a bicycle occurs during heavy braking.

The front axle pushes the fork blades forward while the fork crown is driven backwards. This simultaneous fore and aft movement creates torsional strains on the fork crown.

To resist such deformation and maintain stability, the fork crown must have a thick cross section in the areas of the shoulders. It must have a thick cross section connection with its other components. The Proteus crown incorporates these strengths into an aesthetic and functional semi-sloping design. Fork tab reinforcements are included with the fork.

Through the process of investment casting (also known as lost wax casting) the crown can be made with such close tolerances that both the steerer and the fork blades fit to a $\pm .003$ inches allowing the use of low temperature (1150°F) high strength silver brazing rod. Deep wells for the fork blade sockets permit the builder to insert more blade and more silver rod insuring a strong joint.



COMPONENT PACKAGES

MODEL I

Campagnolo Super Record Group
Cinelli H. B. and stem, Mod. 64
Regina Record S Chain
Nisi Studi Road Rim*
Clement Strada 66 Cotton tires*
Avocet saddle *
Suntour freewheel *

price 401 (all of above)

price 402 (above less * items)

MODEL II

Campagnolo Nuovo Record Group
Cinelli H. B. and stem, Mod. 64
Regina Oro Chain
Rigida 13/20 Rims*
High pressure skinwall tires *
Avocet saddle *
Suntour freewheel *

price 403 (all above)

price 404 (above less * items)

MODEL II TRACK

Campagnolo N. R. Track Group
Cinelli H. B. and Stem, Mod. 67
Regina Chain*
Nisi Track Rims M-20 *
Clement Pista Silk Seta Extra *
Avocet saddle*
Single fixed or freewheel gear*

price 405 (all of above)

price 406 (above less * items)

MODEL III

Campagnolo Gran Sport Group 5F
Cinelli H. B. and Stem, Mod. 64
Regina Oro Chain
Rigida 13/20 Rims*
High pressure skinwall tires*
Avocet saddle*
Suntour freewheel*

price 407 (all of above)

price 408 (above less * items)

MODEL IV

Sugino Mity Competition Crankset
Tange MA-60 Headset
Suntour Derailleurs
Dia-Compe G Brakes
Campagnolo Nuovo Tipo Q. R. Hubs
Regina Corsa Chain
Alloy rims, H. B. and stem, seatpost*
Nylon or covered nylon saddle *
High pressure tires*

price 409 (all of above)

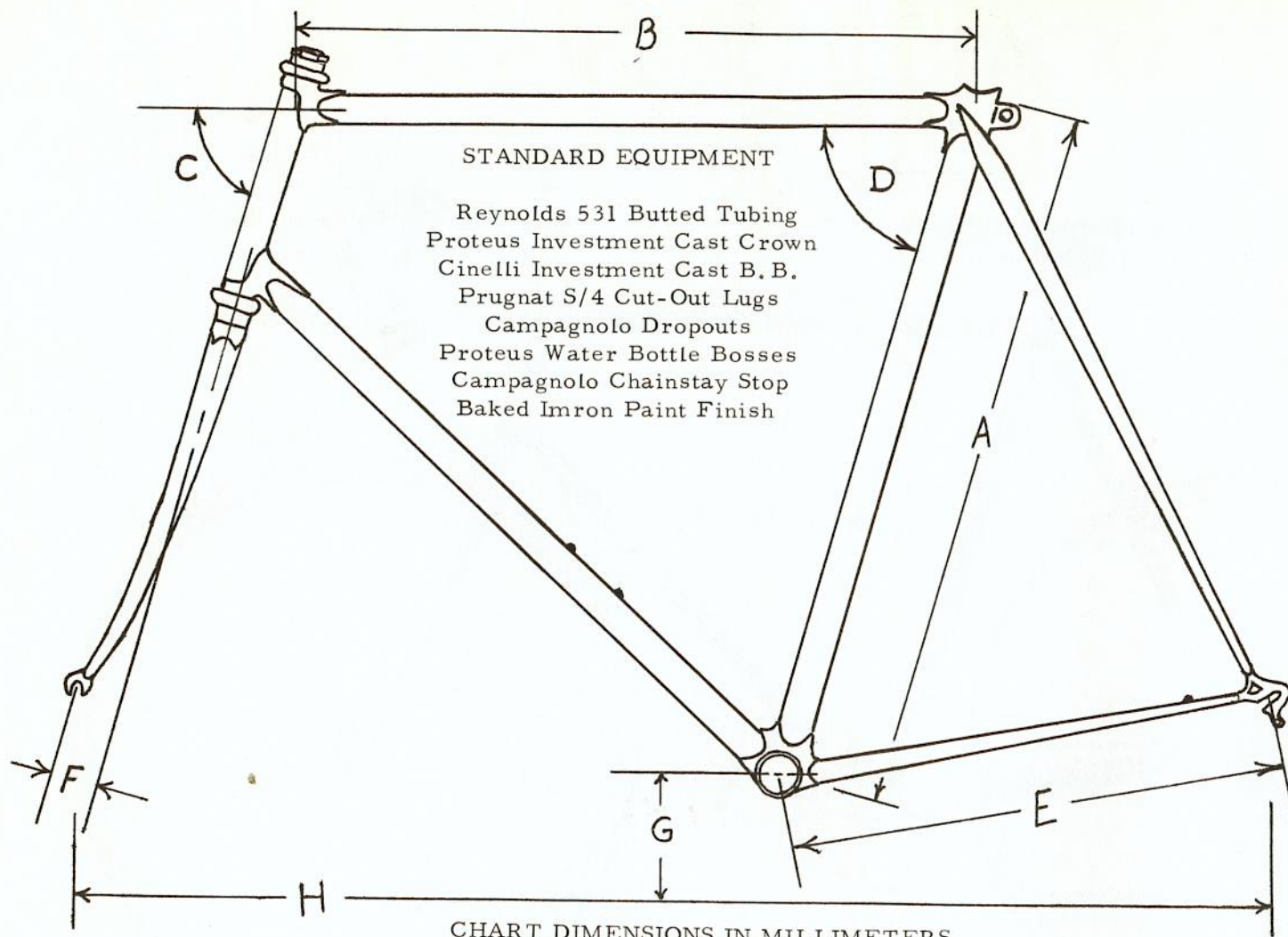
price 410 (above less * items)

Prices 401-410 must be added to frameset price (which varies based on braze-ons etc.) in order to get complete bicycle price. We offer reduced packages (less * items) to allow our dealers to provide their customers with all the flexibility their own inventories permit. Bicycles will be equipped to special order on request.



At Proteus we make use of many top quality components; most of these are featured on page 4. We encourage you to carefully examine all the component packages available. Generally, your best value is obtained by the purchase of a complete bicycle. Price comparisons will reveal that a Proteus equipped with professional grade components is competitively priced with many mass manufactured bicycles of lower quality.

We will supply a Proteus with nearly any combination of parts available in the U.S.A. However, we can give you the best price and service if you select a standard component package or create your own component package limiting your selections to components chosen from the various standard packages.



STANDARD RACING GEOMETRY

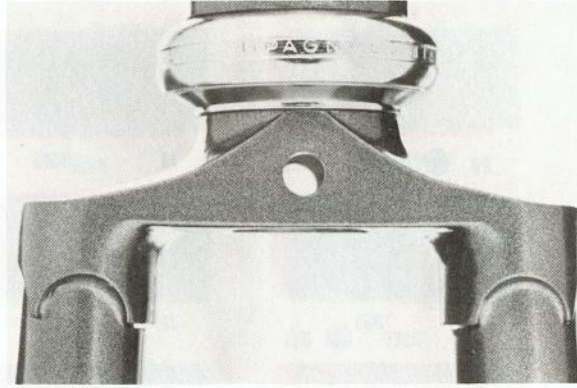
STANDARD TOURING GEOMETRY

A	B	C	D	E	F	G*	H	A	B	C	D	E	F	G*	H
19.5"	520	72.5	74	415	44	277.5	970	18"SFV	490	72	73	445	54	268	946
21"	536	73.5	74	415	44	280	980	19.5"	526	71	75	445	54	273	1031
22"	546	74	74	415	44	282.5	985	19.5"SFV	508	72	73	445	54	268	1002
23"	564	74	74	415	44	282.5	1003	21"	542	71	73	445	54	270.5	1031
24"	578	74.5	74	415	44	282.5	1011	22"	554	72	73	445	54	273	1038
25"	590	75	74	415	44	285	1019	23"	565	72	73	445	54	273	1049
26.5"	600	75	74	415	44	287.5	1030	24"	578	72	73	445	54	273	1062
								25"	590	72.5	73	445	54	275.5	1074
								26.5"	600	73	73	445	54	278	1076

* BASED ON 390 MM WHEEL

At Proteus we build both standard geometry frames and frames made to the customers specifications. In both cases, precision mitering, investment cast components, silver brazing, and careful finishing produce a frame of superior quality. A full selection of paint colors and braze-ons is available for both the standard and made to measure designs.

PROTEUS FRAMES



The Proteus frame is constructed with the standard equipment indicated on the opposite page. Very few frame manufacturers use components of similar quality. Especially important is the use of an investment cast crown and bottom bracket. This highly accurate method of metal fabrication permits the use of silver brazing which is really inappropriate with forged, conventionally cast, or stamped components. In addition, the Proteus crown and Cinelli bottom bracket have proven themselves to be extremely resistant to any deformation under stress.

Deserving a special explanation is our 18" and 19 1/2" SFW (small front wheel) models.* Both designs utilize 24" front wheels with a 27" rear wheel on the 19 1/2" and a 26" rear wheel on the 18" frame. The smaller front wheel permits a decent size head tube, shorter top tube, and a lower bottom bracket height. The result is a frame with better flex characteristics, better fit, and the ability to use front handlebar bags comfortably. The large rear wheel is retained to permit fitting of professional quality and adult size touring racks and bags as well as allowing utilization of popular chainwheel and freewheel gear sizes.

As the chart on the opposite page indicates we also manufacture a conventionally designed 19 1/2" frame which has the advantages of requiring only a single size spare tube and tire, allowing greater rim selection, and providing the best fit for front panniers on rack designs similar to the Blackburn.

Customers desiring a frame built to custom specifications should fill out the Proteus Custom Questionnaire that is either enclosed with this catalog or available on request with stamped self addressed envelop.

Standard geometry frameset up to 25"	701.
Extra charge for above 25"	702
Extra charge for Reynolds SL tubing	703
Extra charge for Reynolds 753 tubing	704
Extra charge for Mixte frameset	705
Tandem frameset	706

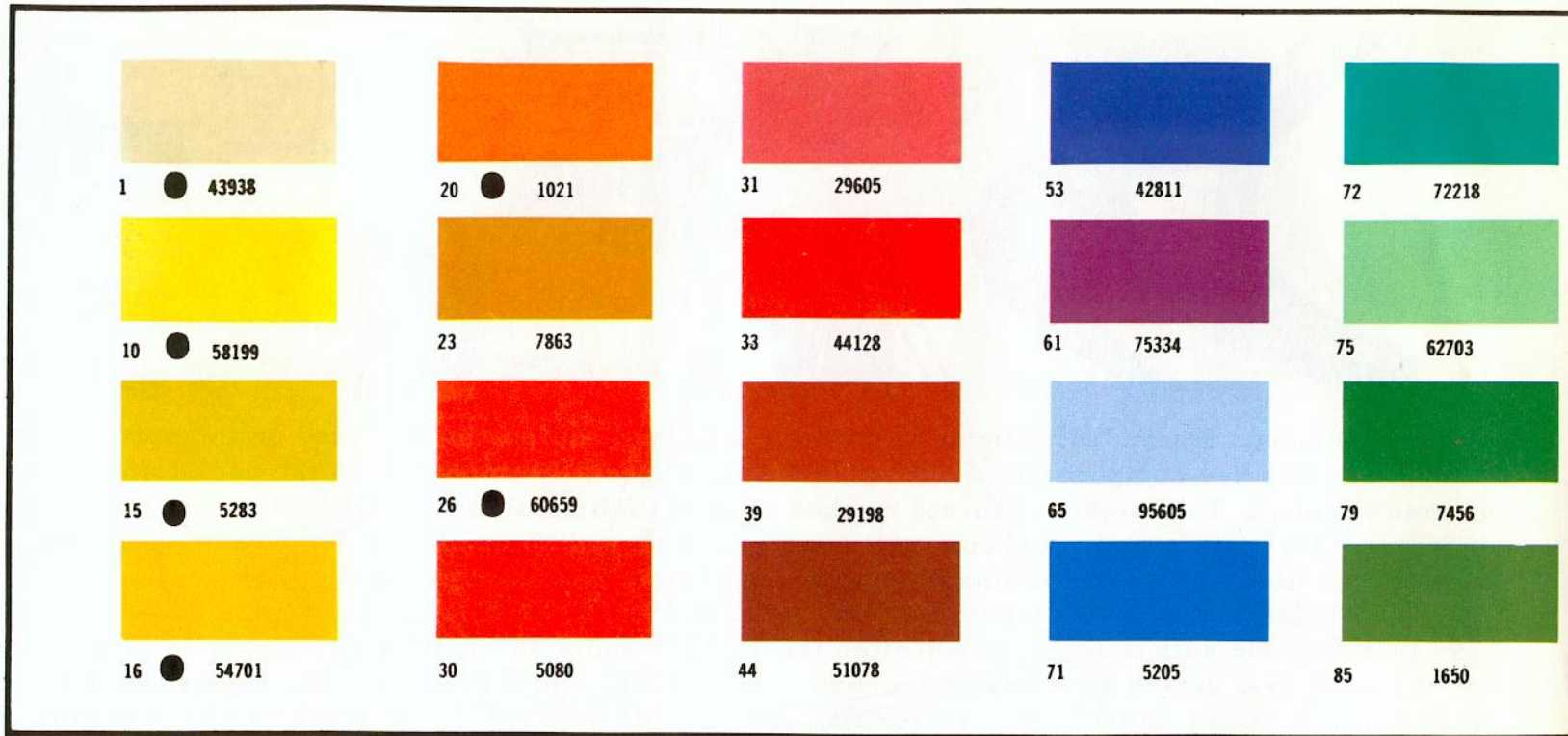
Frameset with custom specified geometry	707
Charge for custom design recommendation	708
Extra charge for 1/2 scale drawing	709
Additional braze-ons and paint jobs more than one color are available for the same charges listed on pages 8 & 9.	

*our thanks to Bill Boston for this design concept

ENAMEL FINISHES

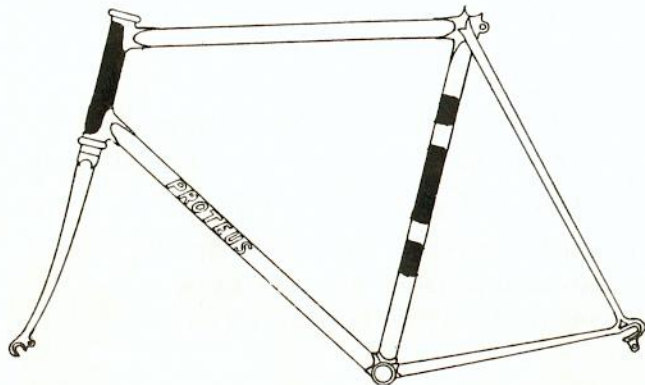
DuPont Colors

We strongly recommend the use of silver #110, metallic blue #131, metallic green #122, and metallic grey #138. These colors work especially well and have been favorites with our staff and customers for years



REYNOLDS OR COLUMBUS FRAME DECALS REAPPLIED FREE WITH ANY PAINT JOB.

At Proteus we prepare the metal for painting with a fine grit sandblasting to allow for good adhesion. After metal preparation both the epoxy primer and the Imron top coat are oven baked to insure complete curing.



PAINTING AND REPAINTING PRICES

complete frame painted one color	801
complete frame painted one (*) color	802
head tube panel painted	803
seat tube panel painted	804
extra strip next to panel in same color	805
fork crown painted	806
fork ends painted	807
stay ends painted	808
head lugs painted	809
cut-outs in head lugs painted	810
cut-outs in seat lug painted	811
cut-outs in reinforcements painted	812
third color additions for contrasts	814

PRESERVING EXISTING CHROME

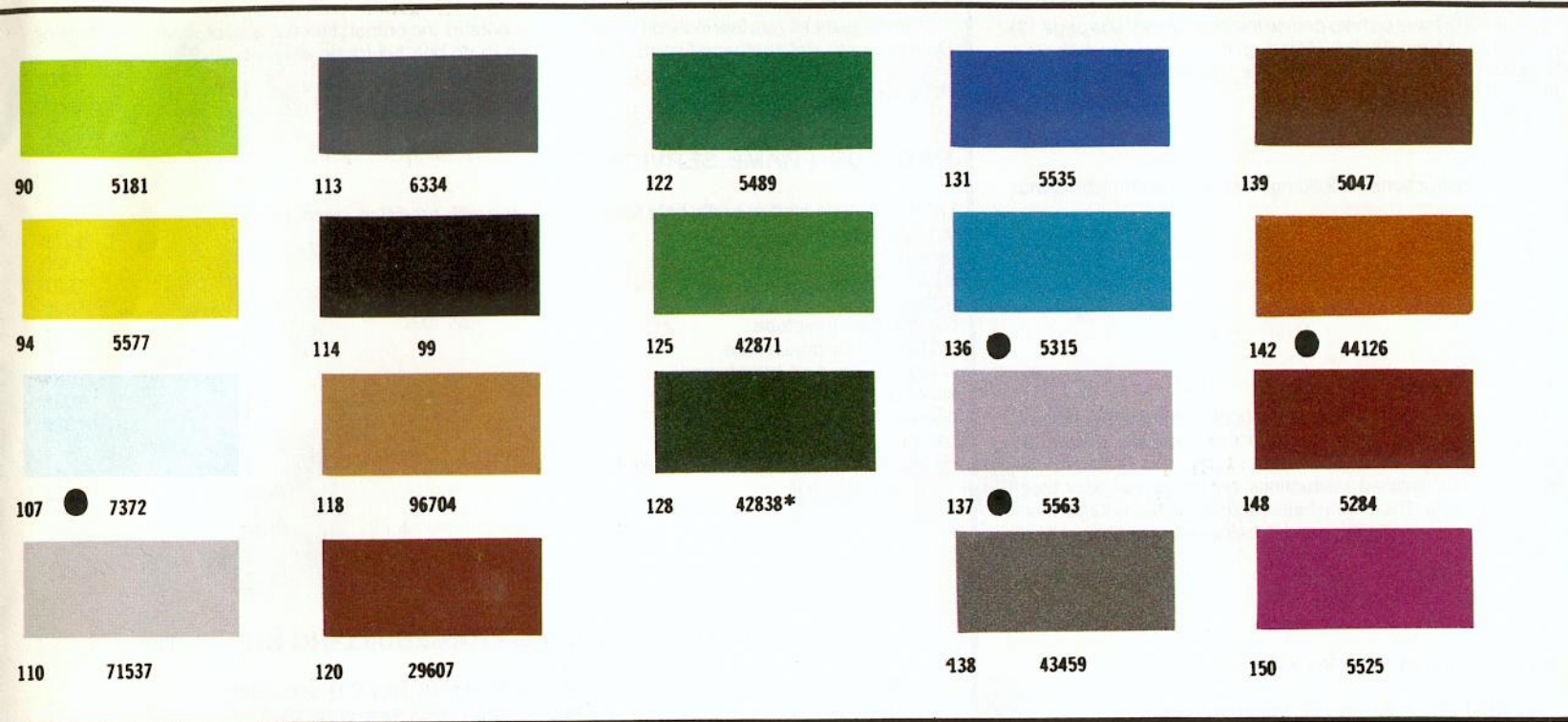
fork tips chrome saved	815
rear stays chrome saved	816
fork crown chrome saved	817
head lug chrome saved	818

CHROMING

We can offer on a limited scale chroming customers' frames, this depends on the quality of the frame finish when we receive the bike. Prices available upon request and according to the size of job.

ENAMEL METALLICS

STANDARD PROTEUS CENTURY COLORS #122, 131, & 139



We do all 150 colors, but this is a list of our favorites

SPECIAL NOTICE

DuPont Imron Polyurethane® paint should never be waxed or polished. It only needs buffing with a clean dry cloth to bring back its bright finish, any compound may ruin the paint.

FRAME REPAIRS & SERVICES

All repairs done with 531 tubing. Prices include parts and labor.

top tube replaced	902
down tube replaced	903
seat tube replaced	904
chain stay replaced (each)	905
seat stay replaced (each)	906
dropout replaced (each)	907
lower brake bridge	908
fork blade replaced (each)	909
B/B shell replaced	910
cut B/B shell Italian	911
track frame	912
track fork	914

FRAME BRAZE-ONS & MODIFICATIONS

There is no better time to have fittings added to your frame than when it is painted, here is a list of available modifications and in most cases they do not delay the completion date of the frame.

waterbottle bosses brazed on P-1002	915
fork tab reinforcements P-1017	916
B/B reinforcements P-1017	917
Campagnolo control bosses C-660	918
Chain stay stop C-621	919
brake cable stops on top tube (2) P-621	920
brake cable housing tunnel guides (3) P-1030	921
Q/R rear brake hanger P-1101	922
B/B tunnel guides left side C-663	923
right side C-626/B	924
cable stop on B/B P-621	925
derailleur hanger C-80/1	926
pump pegs, specify distance (each) P-1077	927
dent filled (if not too big)	928
vent holes filled	929
remove old braze-ons	930

Top tubes often buckle while reheating during the attachment of P-1030 top tube brake cable tunnels. For this reason we reserve the right to refuse to put them on any frame. Please observe Reynolds tube limitations when making frame modifications. For best results the P-1030 should be applied before the main triangle is assembled.

PROTEUS KITS

The Proteus framebuilding kits contain all the parts necessary to build a complete bicycle—and then some. Your kit has an assortment of the world's finest components and plenty of extras are available for kit modifications.

Choose the kit that you need and if necessary write to have us help decide the best tubing (see page 12) and supplies for your kit. All tube diameters and threads are English. Although the bicycle you make is a "one-of-a-kind" and not subject to CPSC regulations, you may obtain these guidelines by writing:

Consumer Product Safety Commission
Bureau of Public Affairs
Washington, D.C. 20207

Refer to the Proteus Framebuilding Handbook for instructions on building, designing, and finishing your frame. When ordering specify:

- size of frame
- fork rake
- special needs
- extra equipment

Proteus Framebuilding Book

1001

The most up-to-date book on the subject. This second edition of the frame book covers every step of building, finishing, painting, and repairing a bicycle frame. Also included in this book are articles by Campagnolo, Reynolds Tubing, Columbus Tubing, Prugnat Lug Co., Haden Lugs, and Proteus Fork Crowns. Each one of these manufacturers has given detailed instructions on the proper way their materials should be used in designing and building a frame. There is no better source for this material than straight from the factory. The book is designed for the novice builder and is being used in many school shop classrooms.

PROTEUS FRAMEBUILDING KIT

1002

As with all Proteus kits, items can be mixed to get the kit right.
Frame kit contains

- * Set Reynolds 531 tubing 21/24 gauge with 27.5x20mm forks and frame decals for up to 25 1/2" frame
- * Campagnolo 1010 dropouts
- * Gargatte English B/B shell 68mm
- * Frejus semi-sloping crown
- * Prugnat Pro S/4 cut-out lugs
- * Proteus 1017 seat stay reinforcements
- * Proteus 1035 top eyes
- * Proteus 1000 brake bridge reinforcement
- * Proteus brazing rod (5 sticks)

Available Extras

Braze-ons	1003
Dropouts	1004
Proteus fork crown with tabs	1005
Haden round crown and round blades	1006
Proteus silver brazing rod	1007
Proteus Pre-mitered tubes (see page 6)	1008
Columbus S/L or S/P tubing	1009

Big Bike Kit Extras

Proteus 14" steerer	1010
Proteus 29" seat tube	1011

PROTEUS PAINT KIT

Proteus paint kit has five individual cans, each contains the primer, thinner, activator, and top coats of DuPont Imron Polyurethane® paint. Enough paint to do one full frame and fork.

Price for full paint kit	1015
Price for contrasting panels	1016

PROTEUS FRAME SERVICES

Let the Proteus staff expertly help finish your frame with precision machinery.

cut B/B threads English	1019
face B/B	1020
track frame	1021
track fork	1022
cut and face headtube	1023
cut steerer for crown race (specify headset brandname)	1024
sandblast frame	1025
primer frame	1026

paint frame (see page 8)

Headsets and B/B are installed free if purchased from us.

PROTEUS TANDEM FRAMEBUILDING KIT

1029

Tandem frame kit

- * Proteus elliptical front alloy B/B cam, 68mm English threads with steel outer shell
- * Prugnat S/4 Pro Cut-out lugs (set of 5)
- * Reynolds 19/22 heavy top tube (2 tubes)
- * Reynolds 19/22 heavy seat tube (2 tubes)
- * Reynolds 19/22 heavy down tube (1 tube)
- * Reynolds 19 gauge head tube
- * Reynolds 13 gauge steer any size
- * Reynolds 17/20 heavy chain stays
- * Reynolds 19/20 seat stays 16mm wide
- * Reynolds 18/21 fork blades
- * Proteus 11 gauge 1 3/4" heavy cross over tube
- * Campagnolo 1010 road dropouts
- * fork crown
- * Shimano 600 cantilever brakes
- * Proteus brazing rod (10 sticks)
- * Proteus 1013 seat stay reinforcements
- * Proteus 1000 brake bridge reinforcement



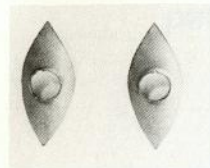
PROTEUS PRACTICE FRAME KIT

1014

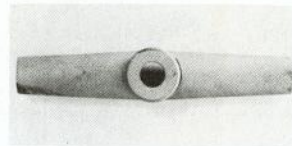
All the parts necessary to build on lug joint and one dropout joint and brazing rod using Reynolds tubing

FRAMEBUILDING SUPPLIES

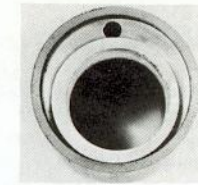
BRAZE-ONS



CI-307
CINELLI SEAT STAY
REINFORCEMENTS
PER PAIR. 1101



CI-306
ALLEN KEY BRAKE
BRIDGE INCLUDES
ALLEN BOLT 1111



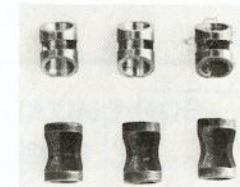
P-1032
PROTEUS ECCENTRIC
TANDEM B/B. ALLOY
BODY WITH STEEL
OUTER SHELL 68mm.
ENGLISH THREADS 1118



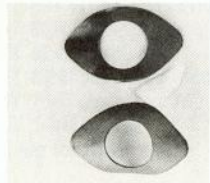
P-1013
PROTEUS SEAT STAY
REINFORCEMENTS
PER PAIR 1102



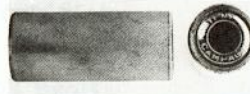
P-1000
BRAKE BRIDGE
REINFORCEMENT
TO FIT 13mm. TUBE 1112



CI-303
TOP TUBE CABLE
HOUSING TUNNEL
GUIDES SET OF 3 1119



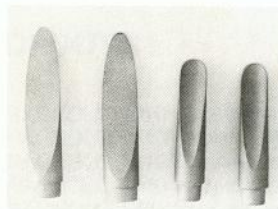
P-1014
CHAIN STAY
REINFORCEMENTS
PER PAIR 1103



P-92
ALLEN KEY FASTBACK
CYLINDER TO ACCEPT
CAMPY #1070 (10mm.)
SEAT BINDER BOLT 1113

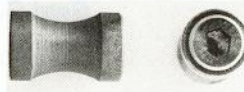


C-621
CAMPY CHAIN STAY
CABLE STOP 1121



CINELLI SEAT STAY PLUGS
PER PAIR

CI-309/16	16mm. FLAT	1104
CI-309/14BIS	14mm. CONCAVE	1105
CI-309/14	14mm. FLAT	1106
CI-309/12BIS	12mm. CONCAVE	1107
CI-309/12	12mm. FLAT	1108



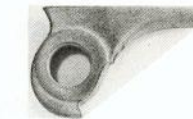
P-93
ALLEN KEY FASTBACK
CYLINDER THREADED
INCLUDES BOLT 1114



CI-304
WATER BOTTLE CAGE
BOSSES TO FIT 1/4"
PILOT HOLES 1122



P-1035
OVAL TOP EYES
FOR ENGLISH WRAP-
OVER SEAT CLUSTER
PER PAIR 1109



C-80/1
CAMPY BRAZE-ON
DERAILLEUR HANGER 1115



C-1013/5&6 DERAILLEUR CONTROLS
TO BE BRAZED ON FRAME,
INCLUDES C-660 AND C-661 1123

C-660 PAIR OF DERAILLEUR
CONTROL BOSSES 1124

C-661 PAIR OF BUSHINGS FOR
C-660 WHEN CONVERTING SET
OF ORDINARY CONTROLS 1125



P-1017
FORK OR B/B TABS
PER PAIR 1110



C-663
CAMPY BRAZE-ON
REAR DERAILLEUR
CABLE GUIDE 1116

C-626/B
CAMPY BRAZE-ON
FRONT DERAILLEUR
CABLE GUIDE 1117

BRAZE ONS NOT ILLUSTRATED

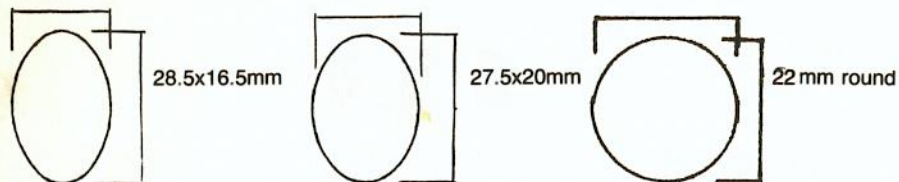
P 1077	PUMP PEG	1126
P1084	CURVED BRIDGE TUBE	1127
S8610	SET OF SHIMANO CANTILEVER BRAKES COMPLETE WITH BRAZE ONS	1128
C-620	FERRULE TO FIT C-621	1129
P-2002	ALLEN HEAD SCREWS TO FIT BOTTLE BOSSES	1130
CI-406	CINELLI NEW STYLE BRAKE BRIDGE FOR ALLEN KEY BOLT	1131

Reynolds 531

Choosing the right tubing is as important as the right frame design. Reynolds and Proteus offer all styles, gauges and lengths of tubing, making designing easier and riding more pleasurable. With all these choices of tubing for road, touring, track and even tandem frames, the wise builder uses Reynolds 531, 531 S/L, and 753 (753 is sold only to authorized builders).

When ordering tubing be sure to specify your frame size and style so we can supply the correct tubes. Buying too long a tube, especially the steerer, will result in cutting off the butted end and weakening the frame. Order the correct set for your needs and if you have any doubts we will review your design. Forks are raked to the desired size free by Proteus.

AVAILABLE REYNOLDS FORKS



new wide oval fork blades

COMPLETE SET REYNOLDS S/L TUBING

Price 1202

19/24 gauge main tubes 600mm long, S/L chain and seat stays, new wide oval fork blades 27.5x20mm oval, English threads, 19/24 gauge fork blades

COMPLETE SET REYNOLDS STANDARD TUBING

1203

21/24 gauge top and seat tube, 20/23 down tube, domed and slotted stays, English threads, 27.5x20mm oval fork 19/24 gauge

COMPLETE SET REYNOLDS HEAVY TUBING

1204

19/22 gauge main tubes 635mm long, 18/21 gauge forks 28.5x16.5mm oval, domed and slotted, English threads, 16mm stays

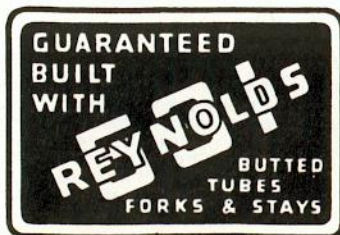
PROTEUS TUBING

Designed for big bikes over 25"(64cm)

12 heavy	360mm long	1229
	extra heavy and long steerer	
17 heavy	750mm long	1230
	extra heavy and long seat tube	

COLUMBUS SP TUBE SET 1231

COLUMBUS SL TUBE SET 1232



INDIVIDUAL REYNOLDS TUBING

Seat Tube

19/22 heavy	635mm long	1205
21/24 standard	635mm long	1206
22/24 S/L	600mm long	1207

Top Tube

19/22 heavy	635mm long	1208
21/24 standard	635mm long	1209
22/24 S/L	600mm long	1210

Down Tube

19/22 heavy	635mm long	1211
20/23 standard	635mm long	1212
19 heavy	590mm long	1214

Head Tube

19 standard	300mm long	1215
19 standard	240mm long	1216

Seat Stays

19/20 D & S	625mm long 16mm wide	1217
19/20 D & S	530mm long 14 or 16mm	1218

Chain Stays

17/20 heavy	410mm long	1219
20/21 standard	425mm long	1220
	D & S	
23 S/L	425mm long	1221

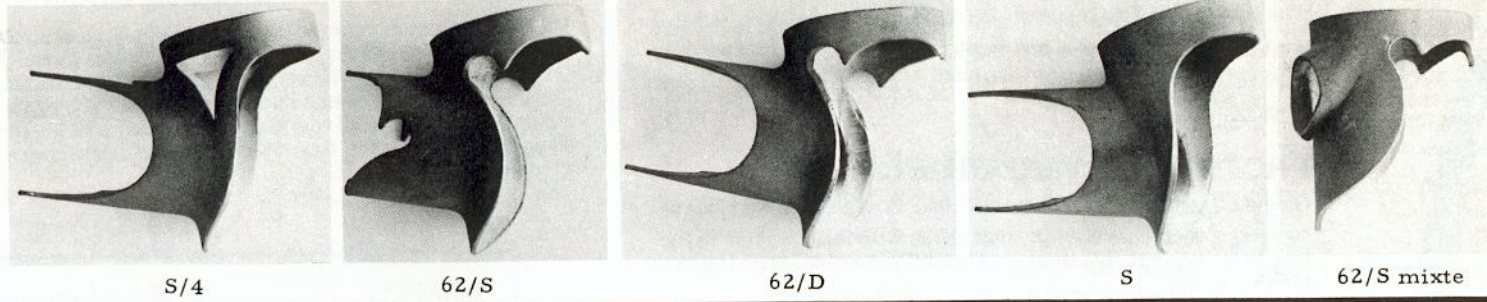
Steering Column

13 standard	English threads	
22.2mm I.D.	200, 240, 260, & 300mm long	1222

Forks

18/21 D & S oval	370mm long	1223
	28.5x16.5mm	
19/24 oval	397mm long	1224
	27.5x20mm	
17/20 round	410mm long	1225
	22 mm round heavy	
18/21 round	425mm long	1226
	D&S 22 mm round	

PRUGNAT LUGS



S/4

62/S

62/D

S

62/S mixte

LUGS

All lugs can be changed $\pm 2^\circ$. All lugs listed are 73° unless otherwise stated.

PRUGNAT S/4 professional cut-out lug	1302
PRUGNAT 62-D cut-out lug	1303
PRUGNAT 62-S scroll lug	1304
PRUGNAT 62-S woman's mixte lug	1305
PRUGNAT 75-F track lug 75°	1306
PRUGNAT S blank lug	1307
Full blank lug for tailor work	1308



DROPOUTS

CAMPAGNOLO 1010 road dropouts with eyelets and adjusters	1309
CAMPAGNOLO 1010/A road dropouts w/out eyelets and with adjusters	1310
CAMPAGNOLO 1010/B miniature road dropouts w/out eyelets and with adjusters	1311
CAMPAGNOLO 1060 vertical dropouts	1312
CAMPAGNOLO 1053 track dropouts	1314
SUNTOUR 4404 concave road dropouts with adjusters and eyelets	1315
SHIMANO 7104 vertical dropouts with eyelets	1316

FORK CROWNS

PROTEUS CROWN: Investment cast semi-sloping with tabs, 27.5x20mm	1318
FREJUS CROWN: Forged semi-sloping crown for 27.5x20mm	1319
CINELLI CROWN: Forged full-sloping crown for 28.5x16.5mm	1320
VAGNER CROWN: Forged flat diamond top for 28.5x16.5mm	1321
HADEN CROWN: Solid body track crown for round 22 mm	1322

BOTTOM BRACKET SHELLS

MARGATTE (RGF) forged 68mm shell. English threads and English diameters (French and Italian threaded shells available)	1327
OTO investment cast 68mm shell	1328
CINELLI INVESTMENT CAST SHELL	1329

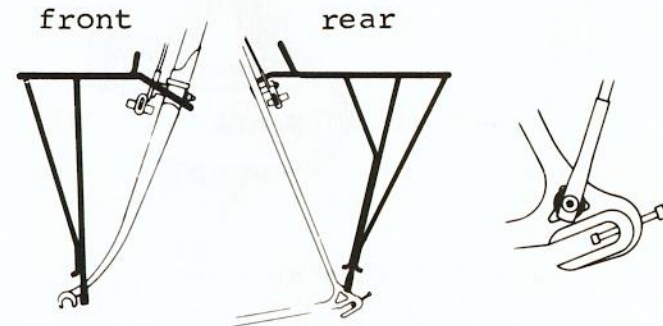
BRAZING MATERIAL BRAZING ROD

Proteus bronze 1450°F brazing rod, designed for excellent flow and ideal for lugless joints and large gaps.

Price for each stick (36" x 1/16")	1324
Price per pound (25 sticks per pound)	1325

Proteus silver 1100°F brazing rod, 55% silver, cadmium free, best flowing rod available, builds joints to .003" price per stick of silver

1326



JIM BLACKBURN RACKS

The lightest and strongest bicycle rack on the market comes standard with mounting screws.

AR-1	STANDARD ADJUSTABLE REAR	1330 S&B
C-AR-2	CUSTOM ADJUSTABLE REAR	1331 S&B
SS-1	STANDARD SEAT STAY REAR	1332 S&B
C-SS-2	CUSTOM SEAT STAY REAR	1333 S&B
C-SS-3	CUSTOM SEAT STAY REAR	1334 S&B
FR-1	FRONT RACK	1335 S&B
BC-1	BLACKBURN WATER BOTTLE CAGE	1336 S&B

S IS SILVER B IS BLACK

PROTEUS B/B PIN TOOL

The Proteus Pin Tool is guaranteed for life against breaking. Will fit any B/B cup that has holes and some F/W faces for bearing service.

pin tool price 1400
replacement pin price 1401

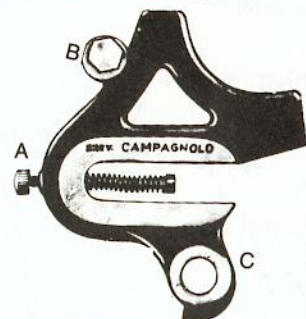
PROTEUS VALVE GROMETS

Gromets designed to fit a schrater clincher rim so presta valve tubes sit securely. Perfect O.D. and I.D. so as to insure perfect fit. Protects the tube from pinching or pressure. Researched and developed by Mr. Charley Martin.

price per pair 1402



PROTEUS METRIC TAPS



3x.5mm tap for dropout adjuster hole (A) 1403
5x.8mm tap for eyelet or cage mount (B) 1404
10x1mm tap for gear hanger (C) 1405

PROTEUS SPOKE WRENCH

Made to fit 14 or 15 gauge spoke nipples. Rubber coated and made to fit in hand. Beveled top allows easy access to new concave extra thin rims.

1406

PROTEUS CYCLING HAT

1407

PROTEUS "T" SHIRT

1408

WHEELCHAIR HUBS

sealed bearings, one piece shell

SEALED BEARING ALLOY

WHEELS FOR BUGGER TRAILER

1411

hubs same as wheelchair

PROTEUS CYCLOMETER

1412

PROTEUS GENERATOR STORAGE SYSTEM

1413

PROTEUS FRAMEBUILDING BOOK

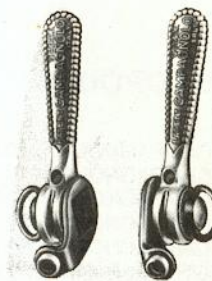
1410

The most up-to-date book on the subject. This second edition of the frame book covers every step of building, finishing, painting, and repairing a bicycle frame. Also included in this book are articles by Campagnolo, Reynolds Tubing, Columbus Tubing, Prugnat Lug Co., Haden Lugs, and Proteus Fork Crowns. Each one of these manufacturers has given detailed instructions on the proper way their materials should be used in designing and building a frame. There is no better source for this material than straight from the factory. The book is designed for the novice builder and is being used in many school shop classrooms.

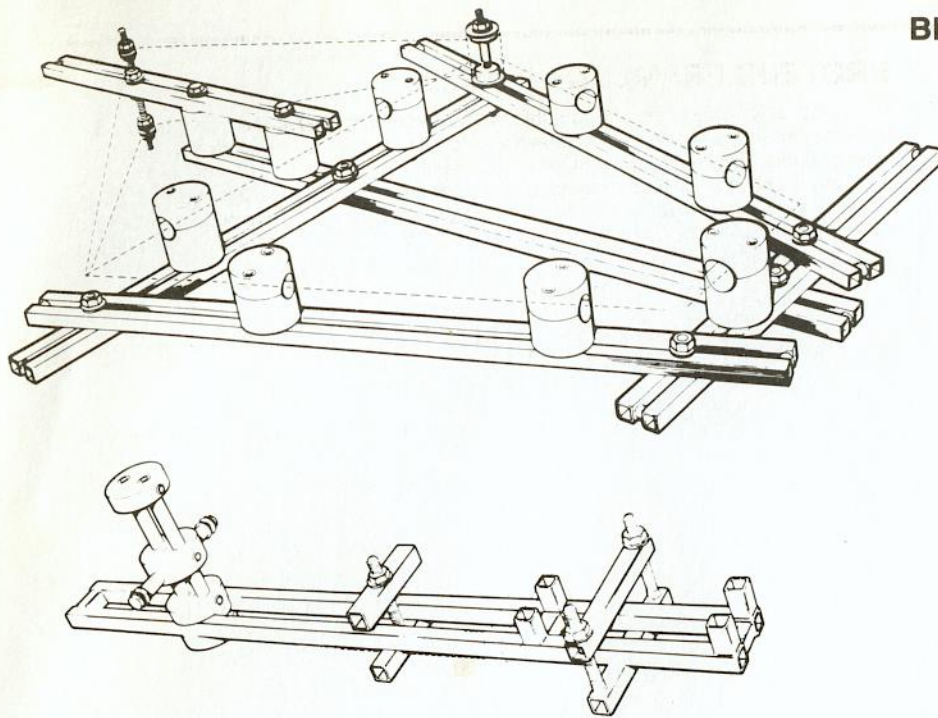
FORK BUILDING

All forks are built with Reynolds 531 tubing and Campagnolo fork tips unless you request others

	price
Fork built with VAGNER diamond top flat crown	primered 1450 painted 1451
Fork built with Cinelli fully sloping crown	primered 1452 painted 1453
Fork built with Proteus semi-sloping crown	primered 1454 painted 1455



1044	1070	Allen key bolt for P-92 cylinder	1456
	1072	Allen key bolt for standard lug	1457
	1044	N/R seat post 180 mm long	1458
	80/1	Additional derailleur hanger	1459
	660	Bosses for down tube controls	1460
	1013/5 & 1013/6	N/R derailleur controls to fit 660 bosses (pair)	1461
	1039	N/R headset for road - English	1462
	1040	N/R headset for track - English	1463
	1046/A	N/R assembly for B/B 68-SS-120 Eng.	1464
	1032/F	N/R Road Group with brakes	1465
	1033	N/R Track Group	1466
		Campagnolo Oval Frame Decal	1467



FRAME AND FORK JIG

- adjusts to any angle and size of frame.
- specify whether for imperial or metric size tubes.
- made for 68mm long bottom bracket shells.
- the tube supports also serve as heat sinks to protect the tube when brazing in the jig.
- with this jig you can make a lugless frame as easily as a lugged frame.
- can be used on a bench or suspended from the ceiling.
- easily dismantled for storage.
- all steel construction in bare metal finish.
- the fork jig can be supplied separately if required.

Purchase price 1501
 Rental price 1502

RECEIVING INFORMATION

All shipments to Proteus for repair, repainting or warranty inspection should be sent via UPS—INSURED! If sent via the post office please insure also.

INSURANCE & CLAIM INFORMATION

All Proteus shipments are sent insured. If a carton arrives damaged you must inform the driver immediately or a company representative and you must also save the damaged carton for further investigations. Unless you follow this procedure you may not be able to collect for your loss.

SPECIAL SHIPPING CARTONS FOR FRAMES

If you have difficulty obtaining a shipping carton of the correct size and strength, contact us. We can ship you a box specially made (42x5x27") for shipping frames via UPS, or overseas. Price for box 1504.



PLACE YOUR CHARGE ORDER BY PHONE

To place your order by phone, you can call our store at 301-441-2929. Complete inventory lists can be given at that time. We only accept MASTER CHARGE and we place a 5% handling charge on each charge order. Shipping arrangements are the same for all transactions.



SURFACE DELIVERY WITHIN THE USA

All parts or kits purchased within the USA are shipped free via UPS—insured. Bicycle frames (whether new or repaired) are charged \$10 for shipping and insurance. These terms apply to retail sales only, wholesale accounts pay for freight. Maryland residents add 5% for sales tax.

DELIVERY OUTSIDE THE USA

Shipments outside the USA are charged full freight whether via surface or air. Please send instructions with order.

COD SHIPMENTS

COD shipments are charged full shipping and COD fee within the USA, COD shipments are not permitted outside USA.

ADDRESS ALL CORRESPONDENCE TO:

PROTEUS DESIGN, INC.
 9225 Baltimore Boulevard
 College Park, Maryland
 20740
 (301) 441-2929

The Proteus rear view mirror is made with a large viewing area (25mm wide). There is no optical distortion from the mirror and the design characteristics permit it to sit securely to anything. It is no longer necessary to fit your glasses or helmet to a mirror, there are three models designed for one of your needs.

Each mirror comes with protective plastic covering to guarantee against scratches in shipping. Mirrors available for left side of road riding.

MIRROR TO FIT WIRE FRAME GLASSES: 1602
Rubber coated to fit securely on thin wire frame glasses, guaranteed not to move, a strong and secure fit. Black anodized

MIRROR TO FIT PLASTIC FRAME GLASSES: 1603
Formed metal to easily fit onto plastic frame glasses, will not loose shape and gives a large clear viewing area.

MIRROR TO FIT HELMET: 1604
Alligator clips securely mounted to mirror, holds perfectly still on any road, can be easily adjusted for correct viewing.



**PROTEUS DESIGN, INC.
9225 BALTIMORE BOULEVARD
COLLEGE PARK, MARYLAND
20740
(301) 441-2929**

To:

