

THE FULL PROFLEXTHESIS - Bob Girvin and *PROFLEX*

- history and the story - as I understand it maybe

The Embryo

The KG Engineering Company were formed around 1987 at 115 Front Street, Woonsocket in Rhode Island 02895. (KG were the initials of Bob Girvin's daughter Kate Girvin). They initially developed motorbike accessories, but they created their own off road suspension mountain bikes. KG designed, made and tested in house products then manufactured in Taiwan. Bob Girvin was the President and Chief Engineer of the company, with Mike Ducharme, the Fabrication Expert and Will Herman the Designer. Bob Girvin retired in 2000 to Holliston, MA.



Bob Girvin and Team designed the first 'full' suspension bikes in 1990. There were only about 100 versions handbuilt and made in steel tube at Serotta as *Serotta Pro.Flex* or *Offroad* (for KG Engineering - Offroad - the trademark of Bob Girvin in 1990 - 91). The first marketed rear single lever / pivot suspension frame as a complete bike was later in 1990 as the *OFFROAD* brand RF-1, which used elastomer suspension and the *Girvin Flexstem* (at £1,400). Earlier was the same address for Bob Girvin of *Pro.flex* at Ocean State International Inc. from 1989 at 115 Front Street, Woonsocket in Rhode Island 02895. These were offered for a wide international sale (including Ultra Sport UK as distributors).

By the end of 1990 the hierarchy for *Pro.flex* bike numbers developed using a 3 number symbolizing:

A. The first number was with the number 1 – 9 for the design / component product of the bike:

1 - nothing set;

2 for Touring and Commuting – by example 253 (designed from 1992);

3 for Road and Trail – by example 353 (designed from 1992);

4 for Performance – by example 453 (designed from 1992);

5 for Rock through Roll – by example 554 (designed from 1994);

6 for XC – by example 654 (designed from 1996);

7 for Expert Series for performance trails – by example 753 (designed from 1992);

8 for Extreme Series for race – cross country or downhill – by example 853 (designed from 1992);

9 for Pro Series for Team cross country racers – by example 953 (designed from 1992).

B. The second number – was for 5 for Full Suspension – by example 953 (except for two bikes - 962 & 862 introducing Girvin Rock Shox).

C. The third number was for the number year the product was designed / manufactured and offered for a wide range of international distributors ready for sale – by example 953 for 1993.

Also came *Pro.flex* bike names for Sport, Animal, Beast, Reptile, Attack, Newport and Arcadia. (designed from 1990).

The Frame References used are – DT = Down Tube; ST = Seat Tube and TT = Top Tube.

There also came **Proflex** Brands / Trademarks / Copyrights for their inhouse components:

Inter-Damp - the initial Elastomer Foam 'springs' with MCU (= Microcellular Urethane springing) Shocks from 1992.

Noleen Racing – NR-1, NR-2 & NR-4 Suspension Units from 1996.

Easton Pro Active – a range with - the Carbon 5th generation DT pivot with single lever rear swingarms, the Aluminium 5th generation DT pivot with single lever rear swingarms, the Aluminium 4^a generation ST pivot with single (short) lever rear swingarms and the Steel 4th generation DT/ST pivot with single (long) lever rear Bell Crank swingarms from 1993.

Girvin – a range of Cranks, Pedals & Flexstems (from about 1989) and Carbon (from 1996) and Aluminium Vector front fork arms and Standard front forks (from 1992).

The Evolution - **PROFLEX**

The 1989 – 1990 Flyer first came the **Offroad MASTER**, a Bike in steel frame with Girvin Flexstem, Sugino Crankarms, Suntour 7 x 2 gears XCD 6000 and Dia Compe 983D brakes.

In 1990 these first Bikes were also labelled as **Serotta**, **Offroad**, or **Pro.flex** and made at KG Engineering at Ocean State International Inc. from 1989 at 115 Front Street, Woonsocket in Rhode Island 02895.



The 1990 & 1991 Catalogue The 1990 & 1991 Bike designs and ranges for production and distributors were:

The **OFFROAD PRO.FLEX USA LTD** developed all in Tange Prestige steel frame with rear single DT/ST pivot steel suspension Curve Blade swingarm frame (spring with Urethane Disc) and steel forks, Girvin Titanium Flexstem & Bar, Cooks Brothers Crankarms and Shimano Deore XT (3 x 7 SIS except Ultegra 600 rear gear) groupset components and Dia Compe 986 brakes;

The **OFFROAD PRO.FLEX 950** developed with an aluminium 7005 main frame with rear single DT/ST pivot steel suspension Curve Blade swingarm frame (spring with Urethane Disc) and steel forks, Girvin Aluminium Flexstem & Bar, Shimano Deore XT (3 x 7 SIS) groupset components;

The **OFFROAD PRO.FLEX 750** developed with an aluminium 7005 main frame with rear single DT/ST pivot steel suspension Curve Blade swingarm frame (spring with Urethane Disc) and steel forks, Girvin Aluminium Flexstem & Bar, Suntour XC Comp (3 x 7 SIS) groupset components and Dia Compe 986 brakes;

The **OFFROAD PRO.FLEX 550** developed all in Tange steel frame with rear single DT/ST pivot steel suspension Curve Blade swingarm frame (spring with Urethane Disc) and steel forks, Girvin steel Flexstem & Aluminium Bar, Shimano Deore LX (3 x 7 SIS) groupset components and Dia Compe XCE / Vanguard brakes (at \$1449);

The **OFFROAD SPORT** developed all in Tange steel frame and steel forks, Girvin steel Flexstem, Aluminium Bar, Shimano Deore 300 (3 x 7 SIS) groupset components.

Also **Offroad**, **Girvin**, **Flexstem** & **Pro.flex** were shown in the 1990 & 91 catalogue for KG Engineering at Ocean State International Inc. from 1989 at 115 Front Street, Woonsocket in Rhode Island 02895. All the production were based to manufacture in Taiwan (although the **USA Limited** may have been assembled at Woonsocket).

The 1992 Catalogue The 1991 Bike designs and ranges for production and distributors for 1992 were:

The **OFFROAD PRO.FLEX 962** developed with an aluminium 7005 main frame with 3rd generation rear single DT/ST pivot steel suspension Curve Blade swingarm frame (spring with MCU Shock) and (the first Girvin) Rock Shox forks, Girvin Titanium Flexstem XST & Bar, Shimano XTR (3 x 7) groupset components;

The **OFFROAD PRO.FLEX 952** developed with an aluminium 7005 main frame with 3rd generation rear single DT/ST pivot steel suspension Curve Blade swingarm frame (spring with MCU Shock) and steel forks, Girvin Titanium Flexstem XST & Bar, Shimano XTR (3 x 7) groupset components;

The **OFFROAD PRO.FLEX 862** developed with an aluminium 7005 main frame with 3rd generation rear single DT/ST pivot steel suspension Curve Blade swingarm frame (spring with MCU Shock) and (the first Girvin) Rock Shox forks, Girvin Titanium Flexstem XST & Bar, Shimano Deore XT (3 x 7) groupset components;

The **OFFROAD PRO.FLEX 852** developed with an aluminium 7005 main frame with 3rd generation rear single DT/ST pivot steel suspension Curve Blade swingarm frame (spring with MCU Shock) and steel forks, Girvin Titanium Flexstem XST & Bar, Shimano Deore XT (3 x 7) groupset components;

The **OFFROAD PRO.FLEX 752** developed with an aluminium 7005 main frame with 3rd generation rear single DT/ST pivot steel suspension Curve Blade swingarm frame (spring with MCU Shock) and steel forks, Girvin Aluminium Flexstem & Bar, Shimano Deore DX (3 x 7) groupset components;

The **OFFROAD PRO.FLEX 552** developed with an aluminium 7005 main frame with 3rd generation rear single DT/ST pivot steel suspension Curve Blade swingarm frame (spring with MCU Shock) and steel forks, Girvin Aluminium Flexstem & Bar, Shimano Deore LX (3 x 7) groupset components;

The **OFFROAD PRO.FLEX 550** developed all in Tange steel frame with rear single DT/ST pivot steel suspension Curve Blade swingarm frame (spring with MCU Shock) and steel forks, Girvin steel Flexstem & Aluminium Bar, Shimano Deore LX (3 x 7 with SRAM Gripshift) groupset components and Dia Compe brake levers;

The **OFFROAD PRO.FLEX 352** developed with an aluminium 7005 main frame with 3rd generation rear single DT/ST pivot steel suspension Curve Blade swingarm frame (spring with MCU Shock) and steel forks, Girvin Aluminium Flexstem & Bar, Shimano Deore LX (3 x 7 with SRAM Gripshift) groupset components;

The **OFFROAD PRO.FLEX 252** developed all in Tange steel frame with rear single DT/ST pivot steel suspension Curve Blade swingarm frame (spring with MCU Shock) and steel forks, Girvin Aluminium Flexstem & Aluminium Bar, Shimano Deore 300LX (3 x 7 with SRAM Gripshift) groupset components;

Also **Offroad, Girvin, Flexstem & Pro.flex** were shown in the 1992 catalogue for Offroad at Ocean State International Inc. at 115 Front Street, Woonsocket in Rhode Island 02895.

The 1993 Catalogue By 1992 the name changed from **OFFROAD PRO.FLEX** to just **PRO.FLEX** and the designs and ranges for production and distributors for 1993 were:

The **953** had developed with an aluminium 7005 main frame, the 4th generation of the rear single DT/ST pivot steel suspension Bell Crank swingarm frame (spring with MCU Inter-Damp Shocks) and the first Girvin Mark 1 aluminium Vector front fork (spring with MCU Shocks) with Girvin Power Drive Crankarms & SRT shifters, Shimano Deore XT gears and Dia Compe 986 brakes & SS-5 levers;

The **853** had developed with an aluminium 7005 main frame, the 4th generation of the rear single DT/ST pivot steel suspension Bell Crank swingarm frame (spring with MCU Inter-Damp Shocks) and the Girvin Pro Forx Shock forks (or Girvin Aluminium Flexstem) with Shimano Deore LX Crankarms, Shimano Deore XT Gears & Rapidfire shifters and Shimano Deore LX hubs and brakes;

The **753** had developed with an aluminium 7005 main frame, the 4th generation of the rear single DT/ST pivot steel suspension Bell Crank swingarm frame (spring with MCU Inter-Damp Shocks) and the Girvin Rock Shox Quadra Shock forks (or Girvin Aluminium Flexstem) with Shimano Deore LX groupset components;

The **453** in steel frame with the 4th generation of the rear single DT/ST pivot steel suspension Bell Crank swingarm frame (spring with MCU Inter-Damp Shocks) and the Girvin Rock Shock Forx forks (or Girvin Steel Flexstem) and Shimano Exage LT components;

The **353** in steel frame with the 4th generation of the rear single DT/ST pivot steel suspension Bell Crank swingarm frame (spring with MCU Inter-Damp Shocks) and the Girvin Aluminium Flexstem and Shimano 700CX components;

The **253** in steel frame with the 4th generation of the rear single DT/ST pivot steel suspension Bell Crank swingarm frame (spring with MCU Inter-Damp Shocks) and the Girvin Steel Flexstem and Shimano Altus C-10 components;

All with BB standardise at UN 55 x 68mm x 110mm.

Also Bob Girvin of **Pro.flex** were shown in the 1993 catalogue for Ocean State International Inc. at 115 Front Street, Woonsocket in Rhode Island 02895. These were offered for a wide international sale (including Ultra Sport UK as distributors).

The 1994 Catalogue By 1993 Bike designs & ranges for production and distributors had been developed with an aluminium 7005 main frame, with BB standardise at UN 55 x 68mm x 110mm and rear spring with MCU Shocks. The range for 1994 were:

The **954** the 5th generation of the short stays travel lever, long rear single DT pivot steel suspension Bell Crank swingarm frame (spring with MCU Shocks) and the Girvin Mark 1 aluminium Vector front fork (spring with MCU Shocks) with Shimano XT components (at \$6995);



The **854** the 5th generation of the long travel lever rear single DT pivot steel suspension Bell Crank swingarm frame (spring with MCU Shocks) and the Girvin Mark 1 aluminium Vector front fork (spring with MCU Shocks) with Shimano LX / XT components (at \$4390);

The **754** the 5th generation of the long travel lever rear single DT pivot steel suspension Bell Crank swingarm frame (spring with MCU Shocks) and the Girvin ProForx front fork (with dual MCU Shocks) with Shimano STX components (at \$3595);

The **554** the 5th generation of the long travel lever rear single DT pivot steel suspension Bell Crank swingarm frame (spring with MCU Shocks) and the Girvin Fastrax front fork (with dual MCU Shocks) with Shimano STX / LX components (at \$2995);

The **454** in steel frame 4th generation of the rear single DT/ST pivot steel suspension Bell Crank swingarm frame (spring with MCU Shocks) and the Girvin Fastrax front fork (with dual MCU Shocks) with Shimano STX components (at \$2540).

or **Arcadia** in steel frame Sportflex (spring with MCU Shocks) and the Girvin Fastrax front fork (with dual MCU Shocks) with Shimano Alivio components in **Arcadia** (at \$1895);

The **254** all in steel frame 4th generation of the rear single DT/ST pivot steel suspension Bell Crank swingarm frame (spring with MCU Shocks) and the Girvin Flexstem and Shimano 400CX components (at \$2650);

The **Newport** in steel frame Sportflex (spring with MCU Shocks) and the Girvin Flexstem and Shimano Altus components (at \$1680).

Also Bob Girvin of **Pro.flex** were shown in the 1994 catalogue for the Pro.flex International Racing Team at Ocean State International Inc. at 115 Front Street, Woonsocket in Rhode Island 02895. These were offered for a wide international sale (including Ultra Sport UK as distributors).

See Legal Change - On October 14, 1993, **Anthony Industries**, the Company, purchased certain assets of **Ocean State International, Inc. ("Girvin")**. Girvin was a manufacturer and distributor of *ProFlex* full-suspension mountain bikes and *Girvin* accessories for sale in the United States and Europe. i.e. *Girvin* became a Division of corporate company of Anthony Industries Inc. At the time K2 were also an existing Division of the corporate company of Anthony Industries Inc. including marketing K2 Ski & (hardtail & comfort) bikes.

The 1995 Catalogue By 1994 Bike designs & ranges for production and distributors were again developed with an aluminium 7005 main frame, with BB standardise at UN 55 x 68mm x 110mm and rear spring with MCU Shocks. The range for 1995 were:

The **955** the 5th generation of the World Cup short travel lever rear single ST pivot aluminium suspension swingarm frame (spring with MCU Shocks (MCU = Microcellular Urethane springing with nitrogen damping) and the Girvin Mark 1 (version 2) aluminium Vector Easton front fork (spring with MCU Shocks) with Topline Crankarms, Shimano XTR gears and other mixed components;

The **Animal** the 5th generation of the World Cup short travel lever rear single ST pivot aluminium suspension swingarm frame (spring with MCU Shocks (MCU = Microcellular Urethane springing with nitrogen damping) and the Girvin Mark 1 (version 2) aluminium Vector front fork (spring with MCU Shocks) with Sugino Crankarms, Shimano XT gears, HED Mountain carbon wheel rims, Magura brakes and other mixed components;

The **855** the 5th generation of the World Cup short travel lever rear single ST pivot aluminium suspension swingarm frame (spring with MCU Shocks (MCU = Microcellular Urethane springing with nitrogen damping) and the Girvin Mark 1 (version 2) aluminium Vector front fork (spring with MCU Shocks) with Sugino Crankarms, Shimano XT gears, LX brakes & XT levers and other mixed components;

The **755** the 5th generation of the short travel lever rear single ST pivot aluminium suspension swingarm frame (spring with MCU Shocks (MCU = Microcellular Urethane springing with nitrogen damping) and the Girvin Mark 1 (version 2) aluminium Vector front fork (spring with MCU Shocks) with Sugino Crankarms, Shimano LX components;

The **555** the 5th generation of the long travel lever rear single DT pivot steel suspension Bell Crank swingarm frame (spring with MCU Shocks) and the Girvin ATF front fork (with dual MCU Shocks) with Sugino Crankarms and Shimano STX components;

The **455** in steel frame the 5th generation of the long travel lever rear single DT pivot steel suspension Bell Crank swingarm frame (spring with MCU Shocks) and the Girvin ATF front fork (with dual MCU Shocks) with Sugino Crankarms and Shimano Alivio components;

The **Arcadia** in steel frame Sportflex (spring with MCU Shocks) and the Girvin ATF front fork (with dual MCU Shocks) with Shimano Acera-X components;

The **Newport** in steel frame Sportflex (spring with MCU Shocks) and the Girvin Flexstem and Shimano Acera-X components and Altus / Tektro brakes;

The **Pro.flex** 1995 catalogue were shown as at Girvin Inc. at 115 Front Street, Woonsocket in Rhode Island 02895. These were offered for a wide international sale (including Ultra Sport UK as distributors).

The 1996 Catalogue By 1995 Bike designs & ranges for production and distributors were again developed with an aluminium 7005 main frame, with BB standardise at UN 55 x 68mm x 110mm and rear spring with MCU Shocks (and the first Carbon Rear Swingarms were 'sub contracted' via K2 Ski). The range for 1996 were:

The **956 LE** the VariLite bike frame with 5th generation of the World Cup long travel lever rear single DT pivot carbon suspension swingarm frame (spring with MCU Shocks (MCU = Microcellular Urethane springing with ODS damping) and the Girvin Mark 1 (carbon) Vector Easton front fork (spring with MCU Shocks) with Topline Crankarms, SRAM rear, Shimano XT front gears, Hershey brakes and other mixed components;

The **956** the VariLite bike frame with 5th generation of the World Cup long travel lever rear single DT pivot carbon suspension swingarm frame (spring with MCU Shocks (MCU = Microcellular Urethane springing with ODS damping) and the Girvin Mark 1 (aluminium) Vector Easton front fork (spring with MCU Shocks) with Shimano XT components;

The **Animal** the 5th generation of the World Cup short travel lever rear single ST pivot aluminium suspension swingarm frame (spring with MCU Shocks (MCU = Microcellular Urethane springing with nitrogen damping) and the Girvin Mark 1 (version 2) aluminium Vector front fork (spring with MCU Shocks) with Sugino 500 Crankarms, Shimano XT gears, LX or HED Mountain carbon wheel rims, Magura brakes and other mixed components;

The **Beast** the 5th generation of the World Cup short travel lever rear single ST pivot aluminium suspension swingarm frame (spring with MCU Shocks (MCU = Microcellular Urethane springing with nitrogen damping) and the Girvin Mark 1

(version 2) aluminium Vector front fork (spring with MCU Shocks) with Sugino 500 Crankarms, Shimano XT / LX gears, Magura Hydraulic brakes and other mixed components;

The **856** the 5th generation of the World Cup short travel lever rear single ST pivot aluminium suspension swingarm frame (spring with MCU Shocks (MCU = Microcellular Urethane springing with nitrogen damping) and the Girvin Mark 1 (version 2) aluminium Vector front fork (spring with MCU Shocks) with Sugino 500 Crankarms, Shimano XT gears, LX/XT brakes and other mixed components;

The **756** the 5th generation of the short travel lever rear single ST pivot aluminium suspension swingarm frame (spring with MCU Shocks (MCU = Microcellular Urethane springing with nitrogen damping) and the Girvin Mark 1 (version 2) aluminium Vector front fork (spring with MCU Shocks) with Sugino 500 Crankarms, Shimano LX components in **756**; the 5th generation of the long travel lever rear single DT pivot steel suspension Bell Crank swingarm frame (spring with MCU Shocks) and the Girvin Mark 1 (version 2) aluminium Vector front fork (spring with MCU Shocks) with Sugino 350 Crankarms Shimano LX / STX components and Dia Compe 700 brakes;

The **Attack LE** the 7005 aluminium bike frame in steel frame Sportflex (spring with MCU Shocks) and the Rock Shox Quadra 5 front fork (with dual MCU Shocks) with Sugino 300 Crankarms, Shimano Alivio / STX components and Tektro brakes;

The **Attack** the 7005 aluminium bike frame in steel frame Sportflex (spring with MCU Shocks) and the Rock Shox Quadra 5 front fork (with dual MCU Shocks) with Cyclone Crankarms, Shimano Acera-X / STX components and Tektro brakes;

The **Pro.flex** 1996 catalogue were shown as at Girvin Inc. at 115 Front Street, Woonsocket in Rhode Island 02895. These were offered for a wide international sale (including Ultra Sport UK as distributors).

The 1997 Catalogue By 1996 there were a 12 people team of bike designs & ranges for production and distributors, which were further developed with a patent Pro-Active aluminium 7005 Easton main frame, with BB standardise at UN 55 x 68mm x 110mm and new front and rear various Suspension Shocks. The range for 1997 were:

The **957** the bike frame with 5th generation long travel lever rear single DT pivot Easton Carbon suspension swingarm frame (suspension with Noleen Racing NR-4 rear Shock with remote reservoir, adjustable compression and rebound with nitrogen charged & floating piston) and the Girvin (Mark 2 Vector) Cross Link Easton Carbon front fork (suspension NR-2 Shock) with Kooka Crankarms, (3 x 8 SRAM rear Shimano XT front gears) and Shimano XT components etc. (first at £4950);

The **857** the bike frame with 5th generation long travel lever rear single DT pivot Easton Carbon suspension swingarm frame (suspension with Noleen Racing NR-2 (or extra for NR-4 with remote reservoir) rear Shock with adjustable compression and rebound with nitrogen charged & floating piston) and the Girvin (Mark 2 Vector) Cross Link Expert Aluminium front fork (suspension NR-2 Shock) with Shimano XT (3 x 8 with RapidFire and LX hubs) groupset components (first at £4400);

The **Animal** the bike frame with the 5th generation of the long travel lever rear single DT pivot Easton aluminium box section suspension swingarm frame (suspension with Noleen Racing NR-4 rear Shock with remote reservoir, adjustable compression and rebound with nitrogen charged & floating piston) and the Girvin Pipeline Chubby MCU / Coil spring air damp mag slider front forks with Kooka Crankarms, (3 x 8 SRAM rear Shimano XT front gears) and Shimano XT / LX components and Magura HS22 hydraulic brakes etc;

The **Beast** the bike frame with the 5th generation of the long travel lever rear single DT pivot aluminium box section suspension swingarm frame (suspension with Noleen Racing NR-2 rear Shock with adjustable compression and rebound with nitrogen charged & floating piston) and the Girvin Pipeline Chubby MCU / Coil spring air damp mag slider front forks with Sugino 500 Crankarms, (3 x 8 SRAM rear & Shimano LX front gears) and Shimano LX groupset components and Magura HS11 hydraulic brakes etc;

The **Beast GDT** the bike frame with the 5th generation of the short travel lever rear single ST pivot Easton aluminium box section suspension swingarm frame (suspension with GDT coil over oil with air charge and floating piston) and Girvin (Mark 2 Vector) AL linkage front forks Sugino 500 Crankarms, (3 x 8 Shimano XT rear and LX front gears) and Shimano LX groupset components and Magura H11 hydraulic brakes etc;

The **Reptile** the 5th generation of the long travel lever rear single DT pivot steel suspension Bell Crank swingarm frame (spring with Girvin MCU dual stage friction damp Shocks) and the Girvin Mark 1 (version 2) aluminium Vector front fork (spring with Girvin MCU Shocks) with Sugino 350 Crankarms (3 x 8 SRAM rear & Shimano STX) and Shimano STX groupset components;

The **757** the bike frame with 5th generation long travel lever rear single DT pivot Easton Aluminium box section suspension swingarm frame (suspension with Noleen Racing NR-1 rear Shock with nitrogen charged & floating piston) and the Girvin (Mark 2 Vector) Cross Link Expert Aluminium front fork (suspension NR-1 Shock) with Shimano LX (3 x 8 XT rear & LX front gears with RapidFire) groupset components (first at £3400);

The **657** the bike frame with 5th generation short travel lever rear single ST pivot Easton Aluminium box section suspension swingarm frame (suspension with Noleen Racing GDT oil damped, floating piston Coil Spring Shock) and the Girvin (Mark 2 Vector) AL linkage front fork (suspension Noleen Racing GDT oil damped, floating piston Coil Spring Shock) with Shimano STX-RC (3 x 8 LX rear & STX front gears with RapidFire) groupset components;

The **Pro.flex** 1997 catalogue were shown as at Girvin Inc. at 115 Front Street, Woonsocket in Rhode Island 02895. These were offered for a wide international sale (including Ultra Sport UK as distributors).

Legal Change - In the meantime, during mid-1996, **Anthony Industries** changed its name to **K2 Inc.** The switch represented an acknowledgment by the company's management of the importance of the K2 (Ski) Corporation which it had acquired 11 years earlier.

On 15th July 1997 **K2 Inc.** renamed the **Girvin Inc. / Pro-Flex** Mountain Bike Division to **K2 BIKE** and unveiled its revised Bike range and its new (*Girvin Noleen*) patented **Smart Shock** Technology.

K2 Bike were started during 1998 after the **K2 Inc.** decided to merge their Ski, Skate and Bike brands under one brand. (i.e. **K2 Ski** & (hardtail & comfort) Bike Division and **Girvin Inc. / Pro-Flex** Mountain Bike Division are merged as one.) The bike brand was a company that K2 had previously bought called Girvin Mountain Sports who sold the "Proflex" range of bikes.

K2 Ski & (hardtail & comfort) Bike Division made with the **K2 "Comp"** Bikes (circa 1990-1996) and the **K2 "Exotec"** & **"Pro"** Bikes (circa 1994-1997). During the merging there was a mixture of 1997 / 1998 models that were re-painted / re-labelled as K2 "*Proflex*" models (approx. 1997-2000 with stockists still for sell). By 1999 a clear revised single range of K2 and *Proflex* models (1999-2005 from stockists) marked as K2 without any reference / labelling as *Proflex*.

The 1998 Catalogue By 1997 K2 continued to design & ranges for production and distributors, which were further developed by using up unused bikes and parts of the earlier 1997 Girvin Inc. Bikes range, again with the patent Pro-Active carbon or aluminium 7005 Easton main frames, BB standardise at UN 55 x 68mm x 110mm and front and rear various Suspension Shocks, across the range for 1998 were: **957, Animal, 857, Beast, Beast GDT, 757, 657 Reptile, Attack, (XPS and XPX not sold UK)**. These were offered for a wide international sale (including Ultra Sport UK as distributors). (details as the earlier 1997 Catalogue as shown).

The new **K2 Proflex** 1998 Mountain range were also remarketed by 8 models. These were the **1000, 2000, 3000, 4000, 5000** and the **Aluminium, Beast** and the Carbon Thermoplastic (**OZ**). The **K2 ProFlex OZ-M** and **OZ-X** were mountain bikes with all carbon and thermoplastic laminated / K2 Smart Shock frame. The frame had a Natural Carbon finish. The OZ (both X & M) in early models of the 9 speed often snapped chains and the Carbon Seatpin also often snapped In 1998 the **OZ-M** was labelled as the **K2 Proflex 5500** and the **OZ-X** was labelled as the **K2 Proflex 4500LE** in the UK.

The 1998 K2 (UK) range were:

The **K2 Proflex 5500** Smart Shock Front & Rear (**OZ-M** in USA) came with Noleen Crosslink CS (Easton Carbon Fibre) front forks and with Mountain Mix components, Shimano 9 XTR and including a Titec Big AL stem, a thermoplastic / threadless Race Face SP headset and Shimano XTR RapidFire shifters. (like an upgraded 957);

The **K2 ProFlex 4500LE** Smart Shock Front (**OZ-X** in USA) came with Noleen Crosslink CS (Easton Carbon Fibre) front forks and with Mountain Mix components, Shimano 9 LX including a Titec Big AL stem, a threadless Tange-Seiki DX-2 headset and Shimano Deore LX RapidFire SL shifters;

The **K2 ProFlex Aluminium** (Only sold in USA) was a mountain bike with an aluminium K2 Smart Shock frame. The frame came in red or blue. Frame with Carbon Rear Swingarm. It came with Shimano Deore XT components, including an aluminium stem, an Aheadset headset and Shimano Deore XT RapidFire SL shifters. (\$2349);

The **K2 ProFlex 5000** (Smart Shock Front & Rear) was a mountain bike with an aluminium Easton Elite / K2 Smart Shock with the EVO frame and BB-UN72 113mm spindle, Shell Width 73mm English. The frame came in grey or yellow. Frame with Carbon Rear Box Swingarm and Noleen Crosslink C (Easton Elite Carbon Fibre) front forks. It came with Shimano Deore XT (3 x 8 Shimano Deore XT RapidFire SL) groupset components, including an aluminium stem, a threadless Tange-Seiki headset and Shimano Deore XT RapidFire SL shifters;

The **K2 ProFlex 4000LE** (Smart Shock Front) was a mountain bike with an aluminium K2 Smart Shock with the EVO frame and BB-UN72 113mm spindle, Shell Width 73mm English. The frame came in red or blue. Frame with Carbon Rear Box Swingarm and Noleen Crosslink Elite (Easton Elite Aluminium) front forks. It came with Shimano Deore XT (3 x 8 Shimano Deore XT RapidFire SL) groupset components, including an aluminium stem, an Aheadset headset and Shimano Deore XT RapidFire SL shifters;

The **K2 ProFlex 3000** was a mountain bike with an aluminium Easton Elite / Noleen NR-2/3. Frame with Carbon Rear Swingarm with Noleen Crosslink Elite (Easton Elite Aluminium) front forks. The frame came in green, white / red and silver / green. It came with Shimano Deore LX groupset components, including an aluminium stem, a threadless Aheadset Kontak AL-2 headset and Shimano Deore LX RapidFire SL shifters; (similar spec to earlier 857).

The **K2 ProFlex 2000** was a mountain bike with an Easton ProGram Elite / Noleen NR-1/3. frame. The frame came in grey or copper with long travel lever rear single DT pivot Easton Aluminium box section suspension swingarm frame (suspension with Noleen Racing NR-1 rear Shock with nitrogen charged & floating piston) and the Girvin (Mark 2 Vector) Cross Link Expert Aluminium front fork (suspension NR-1 Shock). It came with Shimano STX-RC groupset components, including an aluminium stem, a threadless Aheadset Kontak AL-2 headset and Shimano STX-RC RapidFire SL shifters; (similar but less spec to earlier 757).

The **K2 ProFlex 1000** was a full-suspension mountain bike with an aluminium Noleen NR-1/3. frame. The frame came in red or black with Rock Shox Indy C front fork. It came with Shimano STX-RC groupset components, including an aluminium stem, a threadless Aheadset Kontak AL-2 headset and Shimano STX-RC RapidFire SL shifters;

The **K2 Animal** (Smart Shock Rear) was a mountain bike with an aluminium K2 Smart Shock rear with the EVO frame. The frame came in Yellow with Tiger Stripe finish. Frame with BB-UN72 113mm spindle, Shell Width 73mm English, an Aluminium Rear Box Swingarm and Proflex Girvin Noleen Pipeline Chubby LT front forks. It came with Shimano Deore XT (3 x 8 Shimano Deore XT RapidFire SL) groupset components, including an aluminium stem, an Aheadset headset and Shimano Deore XT RapidFire SL shifters and Magura Hydraulic HS22 brakes & Hydrostop levers; (\$2449).

The **K2 Beast** the bike frame with the 5th generation of the long travel lever rear single DT pivot aluminium box section suspension swingarm frame (suspension with Noleen Racing NR-2 rear Shock with adjustable compression and rebound with nitrogen charged & floating piston) and the Girvin Pipeline Chubby MCU / Coil spring air damp mag slider front forks. It came with Sugino 500 Crankarms, (3 x 8 SRAM rear & Shimano LX front gears) and Shimano LX groupset components and Magura HS11 hydraulic brakes. Frame The frame came in purple with yellow or black with red vertebrae. (\$1800).

Noleen Racing designed the 1997 catalogue ('Nineteen Ninety Eight Suspension booklet') which were issued in 1998 at Girvin Inc. at 115 Front Street, Woonsocket in Rhode Island 02895. These were offered for a wide international sale (including Ultra Sport UK as distributors). This detailed the development and sale of Noleen Components of the new K2 Smart Shock (magic carpet). The range include: The Cross-Link CS (Carbon forks with K2 Smart Shock), The Cross-Link C (Carbon forks with NR-2 Shock), The Cross-Link ELT (Easton Aluminium forks with NR-2 Shock), The Cross-Link EXP (Easton Aluminium forks with NR-1 Shock). Bikes with The Cross-Link (Easton Aluminium forks with K2 Smart Shock) were being fitted with long or standard fork legs. Also were the Noleen Chubby front forks with MCU and coil springs, air damping and front disc brackets for 4" travel, the Chubby LT for 5" travel and DH with adjustable moto-valving for 6" travel and replacement Noleen NR-1, NR-2 & NR-4 Shocks and a 6 range for replacement coil springs.

The 1999 & 2000 Catalogue By 1998 the K2 product ranges were further reviewed by 'Full Suspension', 'Hardtail' and 'BMX'. K2 centralised their K2 Bike Division solely at the K2 Ski Inc. facility at 19215 Vashon Highway, S.W. Vashon, WA 98070 and products from 1999 & 2000 were:

Full Suspension: **OZ-M, OZ-X, Razorback RS M, Razorback RS X, 4000SE-Grip, 4000-Grip, 3000, Disco Monkey, Flying Monkey, 1000, 900-V** and Hardtail Range: **Razorback, ZED M / X / V & SE, Arcadia and Newport**. These were offered for a wide international sale (including Ultra Sport UK as distributors). The new updated 1999 / 2000 K2 (UK) Range were:

The **OZ-M** came K2 natural finish laminated thermoplastic Carbon Frame with Carbon Rear Box Swingarm (suspension with Noleen Racing NR-2 rear Shock with adjustable compression and rebound with nitrogen charged & floating piston) and Noleen Pro Carbon with Smart Shock front forks and with Race Face Turbine Crankarms & Titanium BB, Shimano 3 x 9 XTR gears & RapidFire shifters./ components, Avid Arch Rival 50 brakes and including a Titec Big AL stem, a thermoplastic / threadless Race Face SP headset;

The **OZ-ML** came K2 natural finish laminated thermoplastic Carbon Frame with Carbon Rear Box Swingarm (suspension with Noleen Racing NR-2 rear Shock with adjustable compression and rebound with nitrogen charged & floating piston) and Noleen Pro Carbon with Smart Shock front forks and with Race Face Turbine Crankarms, Real Titanium BB, Shimano 3 x 9 XTR gears & RapidFire shifters./ components, Avid 2.5 brakes & Avid 1.9 levers and including a Titec Big AL stem, a thermoplastic / threadless Race Face SP headset;

The **OX** came K2 natural finish laminated thermoplastic Carbon Frame with Carbon Rear Box Swingarm (suspension with Noleen Racing NR-2 rear Shock with adjustable compression and rebound with nitrogen charged & floating piston) and Noleen Pro Carbon with Smart Shock front forks and with Race Face Turbine Crankarms, Shimano 3 x 9 XT rear, LX front gears & LX RapidFire shifters & BB./ components, Avid Arch Rival 40 brakes and Avid 1.9 levers and including a Titec Big AL stem, a thermoplastic / threadless Race Face SP headset;

The **Razorback RSM (& RSL)** came K2 AC/DC Aluminium Frame with Easton Ultralight tube, stays and dropouts with Noleen 2.7" travel Ti spring thru-shock and Noleen Elite NR-2 (Easton Elite Aluminium) front forks and with Race Face Turbine Crankarms, Real Titanium BB, Shimano 3 x 9 XTR & RapidFire shifters / components, Avid Lite 2.5 brakes and Avid 1.9 levers;

The **Razorback RSX (& RS)** came K2 AC/DC Aluminium Frame with Easton Ultralight tube, stays and dropouts with Noleen 2.7" travel Ti spring thru-shock and Noleen Elite NR-2 Shock (Easton Elite Aluminium) front forks and with Shimano XT Crankarms, World Class Titanium BB, 3 x 9 SRAM rear Shimano LX front gears & SRAM shifters / XT components, Avid SD 2.5 brakes and Avid SD 1.9 levers;

The **4000SE-Grip (& 4000 RS)** came as an aluminium K2 EVO frame. BB-UN72 113mm spindle, Shell Width 73mm English. Frame with Aluminium Rear Box Swingarm & NR-2 Shock and Noleen Crosslink Elite NR-2 (Easton Elite Aluminium) front forks. Came with Shimano XT (3 x 9 SRAM rear Shimano LX front & SRAM shifters) groupset components, World Class Ti BB and Avid SD 2.5 brakes and Avid SD 1.9 levers;

The **4000-Grip (& 4000)** came as an aluminium K2 EVO frame. BB-UN72 113mm spindle, Shell Width 73mm English. Frame with Aluminium Rear Box Swingarm & NR-2 and Noleen Crosslink Elite with Smart Shock (Easton Elite Aluminium) front forks. Came with Shimano XT (3 x 9 Shimano XT rear LX front & LX RapidFire Plus shifters) groupset (LX hubs) components and Avid SD 2.5 brakes and Avid SD 1.9 levers;

The **3000** came as an aluminium K2 EVO frame. BB-UN72 113mm spindle, Shell Width 73mm English. Frame with Aluminium Rear Box Swingarm & NR-2 Shock with K2 Smart (Chubby) front forks. Came with Shimano LX (3 x 9 Shimano XT rear LX front & LX RapidFire Plus shifters) groupset components and Avid Arch Rival 40 brakes and Avid SD 1.9 levers;

The **Disco Monkey (3 variations of components)** came as an aluminium K2 EVO frame. BB-UN72 113mm spindle, Shell Width 73mm English. Frame with Aluminium Rear Box Swingarm & Rock Shox Psylo XC with K2 Noleen Mega Air front forks. Came with Shimano LX (3 x 9 Shimano LX & LX RapidFire Plus shifters) groupset components and Tektro Disc brakes and levers;

The **Flying Monkey (variations are Flyin / Funky / Bumpy / Brass Monkey)** came as an aluminium K2 EVO frame. BB-UN72 113mm spindle, Shell Width 73mm English. Frame with Aluminium Rear Box Swingarm & NR-2 Shock with

K2 Chubby LT dual crown front forks. Came with Shimano LX (3 x 9 Shimano LX & LX RapidFire Plus shifters) groupset components and Magura HS-22 Hydraulic brakes and levers;

The **1000** came as an aluminium K2 EVO frame. BB-UN72 113mm spindle, Shell Width 73mm English. Frame with Aluminium Rear Box Swingarm & NR-1 Shock with K2 Smart (Chubby) front forks. Came with Shimano LX (3 x 9 Shimano LX & LX RapidFire Plus shifters) groupset components and Avid Single Digit 1.0 brakes and levers;

The **900-V** came as an aluminium K2 EVO frame. BB-UN72 113mm spindle, Shell Width 73mm English. Frame with Aluminium Rear Box Swingarm & NR-1 Shock with RST Zeta EL front forks. Came with Shimano SLX-RC (3 x 9 Shimano LX rear STX-RC front & STX-RC RapidFire Plus shifters) groupset components and Tektro brakes and levers;

The **Razorback (variations are 3.0, 4.0, Comp, HT, RS, RSL, RSX, SL and Team)** came K2 Heritage Hardtail Aluminium Frame with Easton Ultralight tube, stays and disc brake ready and Noleen Elite NR-2 (Easton Elite Aluminium) front forks and with Shimano XT (3 x 9 XT rear & LX front & XT RapidFire shifters) groupset components;

The **ZED (variations are M, X, V, SE, 1.0, 2.0, 3.0, 4.0, 5.0, 16, 20, 24, MTB and Sport)**

- The **ZED M** came K2 Double Diamond Hardtail Aluminium Frame with Easton Ultralight tube, S bend chainstays and Noleen Smart front forks and with Shimano LX (3 x 9 XT rear & LX front & XT RapidFire shifters) groupset components and Avid Single Digit 2.0 brakes and Avid Single Digit 1.9 levers;

- The **ZED X** came K2 Double Diamond Hardtail Aluminium Frame with Easton Ultralight tube, S bend chainstays and Noleen Smart front forks and with Shimano LX (3 x 9 LX & LX RapidFire shifters) groupset components and Tektro brakes and levers;

- The **ZED V** came K2 Double Diamond Hardtail Aluminium Frame with Easton Ultralight tube, S bend chainstays, RST Zeta EL front forks and K2 Flexpost and with Shimano Alivio (3 x 9 SLX-RC rear Alivio front & Alivio RapidFire shifters) groupset components and Tektro brakes and levers;

The **Arcadia** came K2 Comfort Double Diamond Hardtail Aluminium Frame with steel front forks, K2 Flexstem and K2 Flexpost and with Shimano Alivio (3 x 9 SLX-RC rear Alivio front & Centera shifters) groupset components and Tektro brakes and levers;

The **Newport** came K2 Comfort Double Diamond Hardtail Aluminium Frame with steel front forks, K2 Flexstem and K2 Flexpost and with Shimano Alivio (3 x 9 SLX-RC rear Alivio front & Centera shifters) groupset components and Tektro brakes and levers;

The fork range now includes: The Cross-Link Pro Carbon S (Carbon forks with K2 Smart Shock), The Cross-Link Pro Carbon (Carbon forks with NR-2 Shock), The Cross-Link Elite S (Easton Aluminium forks with K2 Smart Shock), The Cross-Link Elite (Easton Aluminium forks with NR-2 Shock) and The Cross-Link Expert (Easton Aluminium forks with NR-1 Shock). Also were the Noleen Chubby front forks with MCU and coil springs, air damping and front disc brackets for 4" travel, the Chubby LT for 5" travel and DH with adjustable moto-valving for 6" travel.

The **K2 Bike** 1999 & 2000 catalogue was shown at the new central base at K2 Bike near Seattle at 19215 Vashon Highway, S.W. Vashon, WA 98070. These were offered for a wide international sale (including Ultra Sport UK as distributors).

2005 THE END . **K2 Bike** - in 20 March 2005 its **Sports Division** entered into a multi-year agreement with the **World Wide Cycle Supply** to license K2 Bikes (which included the merge of Girvin Inc. / Pro-Flex Mountain Bike Division). World Wide Cycle Supply, the company which owned the Iron Horse brand.

At 2005 **K2 Bike** had the rights for 61 major bike models and 344 bikes in total. For its Mountain Bike Range (21 off and many with variations) include: Arcadia, Attack, Brass Monkey, Bumpy, Monkey, Disco Monkey, Echo Mountain, EVO, Flyin' Monkey, Flying Monkey, Funky Monkey, Launch, Lithium, Myste Mountain, Oz-M, Oz-X, ProFlex, Razorback, Skye Mountain, Spire Mountain, Tirade and Zed.

World Wide Cycle Supply (owned Iron Horse which went bust 2009) and it was bought by the Dorel Industries Inc. in Canada, which had ownership of the Cannondale Bicycle Corporation.

Who bought K2 bikes? = Jarden later acquired Iron Horse by Newell Brands, who then sold K2 to private equity firm Kohlberg & Company in 2017.

SPARES ... **NoleenJ6** at 12180 Ridgecrest Road, Victorville, CA 92395 USA are still handy for NR-1, NR-2 and NR-4 new Suspensions or spares, but equally **Risse Racing** at 2237 SW 2nd Ct, Redmond OR 97756 for their Genesis (or better) Astro-5 (adjust pneumatic & 5 adjustable settings) or (even better) Terminator (adjust pneumatic oil damped & 6 adjustable settings) Suspension Dampers are a more modern, bike specific, adjustable pneumatic versions. Shimano spares are also good for most, or near best replacements, but new spares for the 4 arm XT & LX are no longer available. But there are equal (with the odd washer) other Shimano inner and middle rings. When the outer ring is gone - a Shimano Acera FC M361 triple 44 / 32 / 22 crankset is probably the best replacement you can get.....

K2 / Proflex Bike MAKE A BETTER ONE – SOMEDAY.....???

For a 26" Wheel size – redesign with an aluminium **K2 4000 EVO** frame. BB-UN72 113mm spindle, Shell Width 73mm English. Frame with Carbon or Aluminium Rear Box Swingarm & Smart Shock and Noleen Crosslink Carbon or Aluminium with Smart Shock (Easton Elite) front forks. Come with Shimano XT (3 x 9 with 44 / 32 / 22 cranks and by improving downhill speed by 9 speed with 10 / 30 Cassette) Shimano XT groupset components. For the Evo frame extend the Top Tube (TT on a Large x 495mm ST height) from 540mm TT length pin / fork tubes – to 570mm TT length pin / fork tubes – as per same as a **957 / 857 / 757 Proflex** (Large x 495mm ST height) frame and add disc brakes by modifying front arm and rear box chainstays. Also update the Smart Shock units the extend with a handlebar button to control with Off / On / lock / and Set Up and Set Down???

If it must be with 27.5" Wheel size - then (same as below) but the front arm and rear box chainstays will need with a short extension and drop the triple ring crankset and frame front gear stubs to make a single crankset with 10 speed Cassette???

And I'd labelled my new range of bikes – **Per-Plex** © or maybe **Pro-Plex** © ???



**The Old Goat
is a Dirt
Disciple ©**

9 Jan 2023 ©

.....THOSE CLASSIC BIKES.....

Serotta Offroad (Pro.flex)



Pro.flex Offroad 750 1990



RF-1, but it is practically identical to the 750.

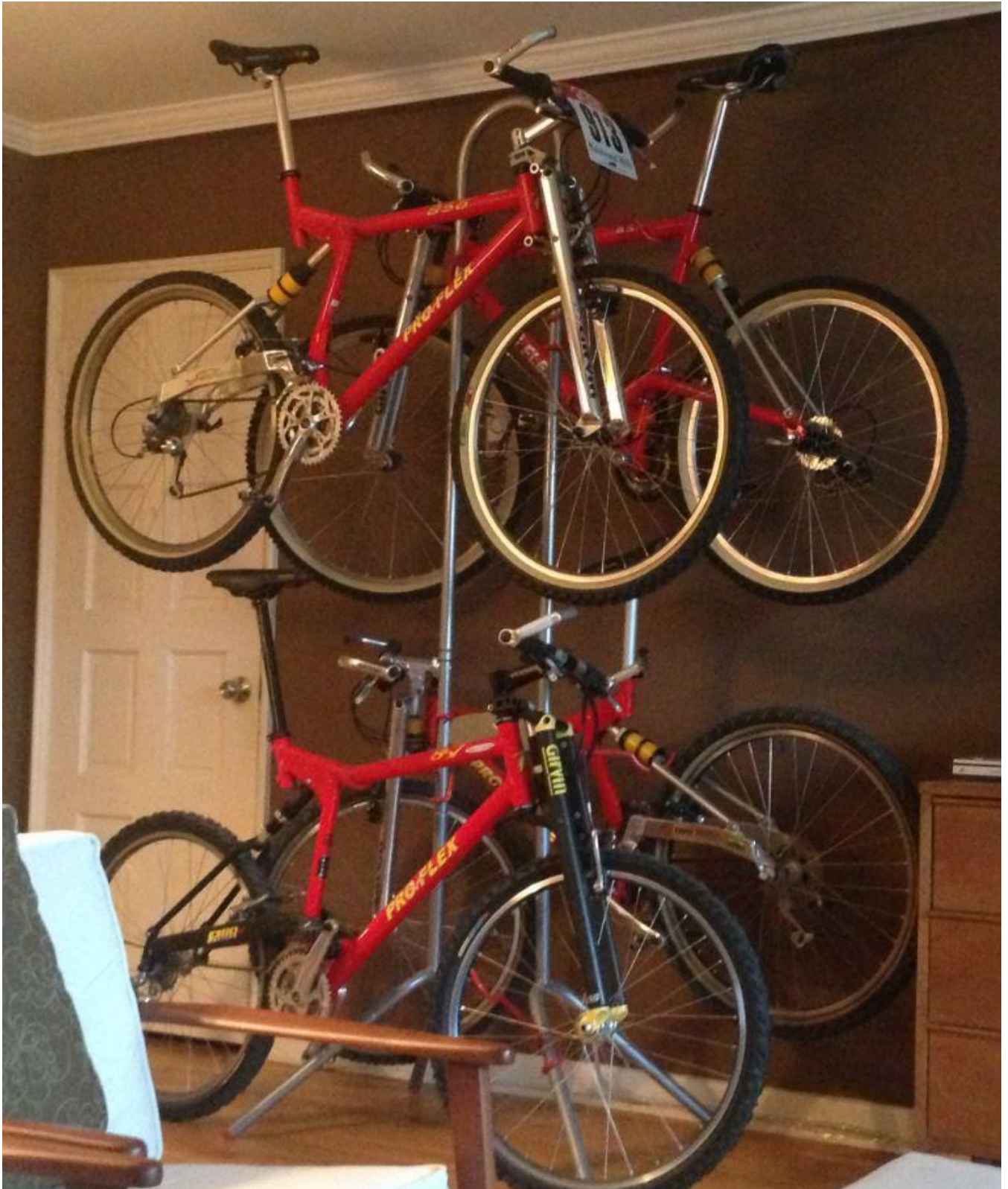


550



'They were engineers and they needed someone to give life to their designs, they were based in Rhode Island, so Serotta was near from them and he (Bob Girvin) made a little production for KG engineering (Offroad - ProFlex). They used the Offroad brand, but they had to change the name to Proflex (problems with the patents or so).'

In KG Engineering at Offroad Proflex



Proflex Xworks Xp6 (late 1996)



Proflex 856



Proflex 757



Proflex 857



Proflex 957+ model



Proflex 957 PLUS



Proflex Beast 1997



K2 Animal 1998





K2 Proflex OZ-X with Shimano LX



K2 Proflex OZ-M with Shimano XT



K2 Proflex 5000 (EVO frame)



K2 Proflex 4000 (EVO frame)



K2 Proflex 3000



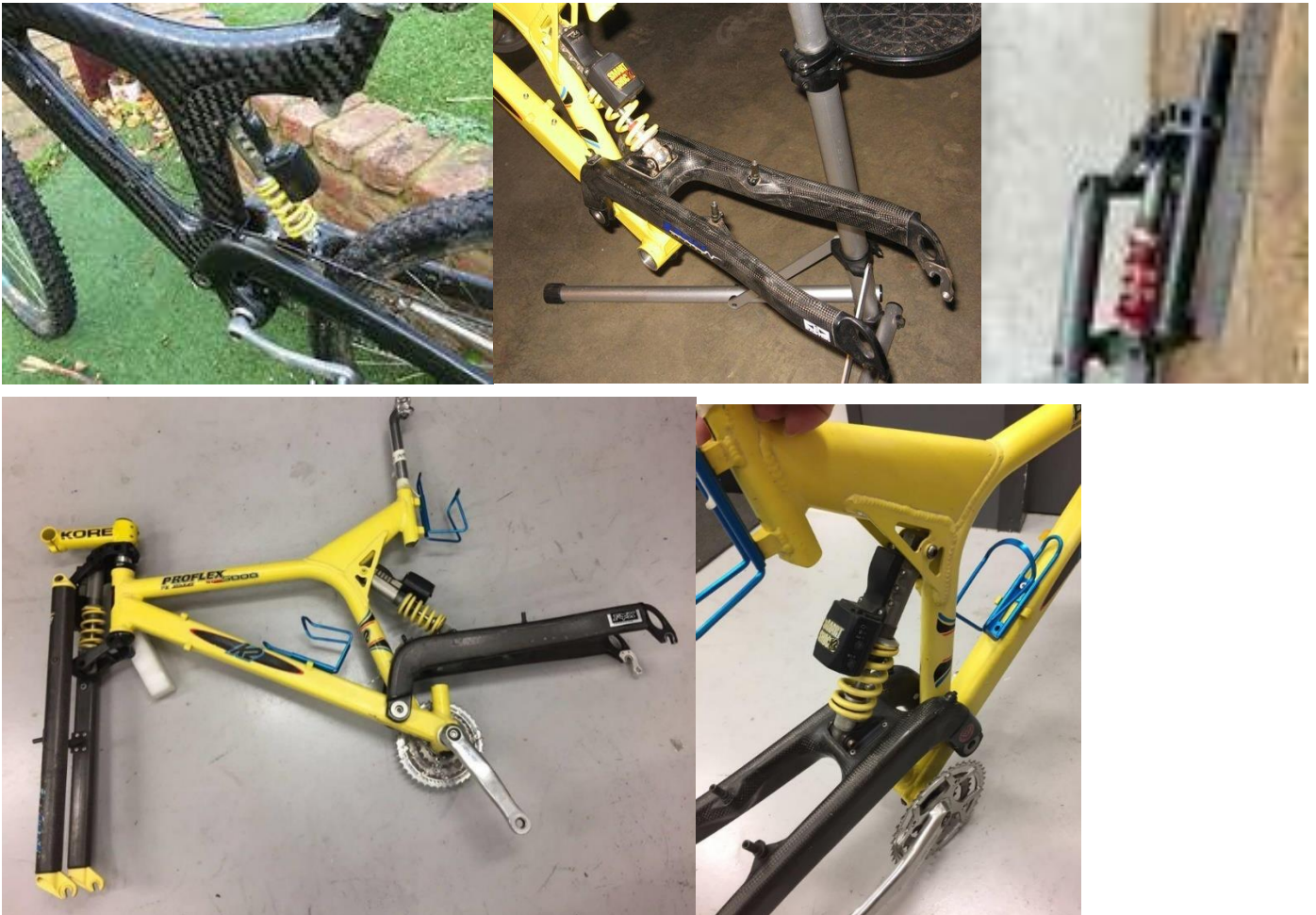
K2 Proflex 5500 (Carbon frame)



K2 Proflex 4500 (Carbon frame) later model with Disc Brakes and No Girvin front forks



K2 Proflex 5000 in parts.



K2 Smart Shock – the ‘magic carpet’ – Can fit all Mark 2 Front Forks but only fit rear K2 4000 & 5000 etc EVO frame.

variable electronic damping. It's used on the most exotic racing equipment in the world. Pit pundits claim it's an unfair advantage. Either way, it's been unattainable in the bicycle industry.

Until now. The new K2 Smart Shock with a "brain." The K2 Smart Shock is the world's first bicycle shock with a "brain." The sensor in the shock reads piston speed and location, and sends the data to the smart circuit. The circuit returns a signal to the piezo valve, flexing the valve in a millisecond to increase or reduce oil flow. that's 1/1000 of a second! The end result is increased tire-to-ground contact, letting you push yourself past the edge and come back in one piece. the "brain" thinks for you, so you can concentrate on riding. Not on bracing for bumps.

A piezoelectric, or piezo, is a ceramic material that can be manipulated with electricity. In other words, shock the valve with a bit of juice and it opens; cut off the current and it snaps shut. The result is increased



tire-to-ground contact, letting you concentrate on riding. Not bracing for bumps.

With conventional shocks, damping has always been a compromise: Set it up stiff, and the bike performs poorly in trail chatter. Set it up plush for rocks and roots, and you risk getting spit off on high-speed impacts. Smart Suspension maintains control in all speed and terrain extremes by compensating for any impact in the blink of an eye.



- Standard 9V battery (20hrs of on-bike run time)
- Sealed against the elements - designed to withstand a beating
- One year warranty
- Rebuildable, just like other Noleen shocks
- Functions like a NR-2 if batteries die
- Available exclusively on K2 and Noleen products

Noleen Racing – in 1997 / 98 then based at 115 Front Street, Woonsocket in Rhode Island 02895. Earlier same address for Bob Girvin of **Pro.flex** at Ocean State International Inc from 1989. Later as **Proflex & Girvin** until 1998.
K2 - in 1998 / 99 then based at 19215 Vashon Highway S.W. at Vashon WA 980700 (on west of Seattle).

K2 Proflex 4000



K2 Proflex 4000, 857, 656 & 757



.....CLASSIC / FUTURE DREAM BIKES.....



RAZORBACK 2.0

- 27.5" FULL SUSPENSION
- Carbon Frame, Steel Fork
- Hydraulic Disc
- Shimano 10-Speed Group
- Shimano 10-Speed Group
- Shimano 10-Speed Group
- Shimano 10-Speed Group
- Shimano 10-Speed Group
- Shimano 10-Speed Group
- Shimano 10-Speed Group
- Shimano 10-Speed Group



RAZORBACK 3.0

- 27.5" FULL SUSPENSION
- Carbon Frame, Steel Fork
- Hydraulic Disc
- Shimano 10-Speed Group
- Shimano 10-Speed Group
- Shimano 10-Speed Group
- Shimano 10-Speed Group
- Shimano 10-Speed Group
- Shimano 10-Speed Group
- Shimano 10-Speed Group

14 27.5" FULL SUSPENSION

k2bikes.com 15

THAT FUNKY MONKEY IS BACK



BRASSMONKEY | 2015 K2 BIKES

IT'S TIME TO GO HOG WILD



RAZORBACK | 2015 K2 BIKES

THAT FUNKY MONKEY IS BACK



BRASSMONKEY | 2015 K2 BIKES