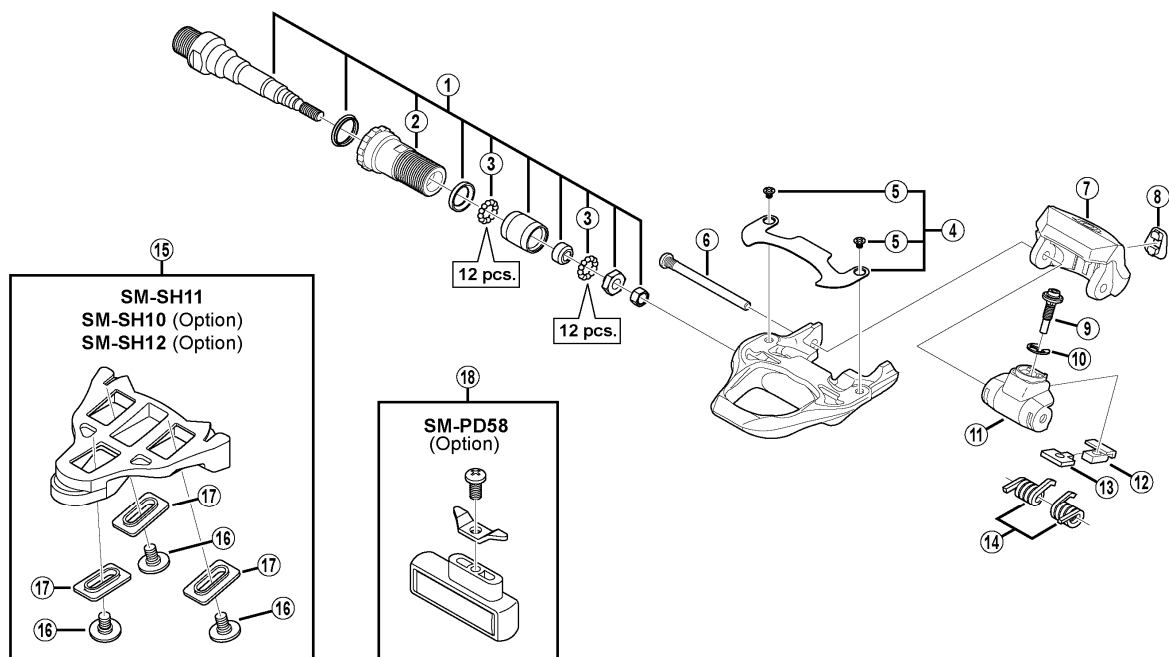


SHIMANO 105 SPD-SL Pedals

PD-5700



ITEM NO.	SHIMANO CODE NO.	DESCRIPTION	INTERCHANGEABILITY	
* 1	Y45J98030	Pedal Axle Assembly (Right / B.C.9/16" x 20T.P.I.)	A	A
	Y45J98020	Pedal Axle Assembly (Left / B.C.9/16" x 20T.P.I.)	A	A
2	Y43Z13100	Lock Bolt (Right)	A	A
	Y43Z14100	Lock Bolt (Left)	A	A
3	Y41N98030	Steel Ball (3/32") 62 pcs.	A	A
4	Y45H98010	Body Cover & Fixing Screws		
5	Y42T05000	Body Cover Fixing Screw	A	A
6	Y45F05200	Binding Pin		A
7	Y42U02400	Binding		A
8	Y42U10600	Indicator		A
9	Y45F04000	Spring Adjustment Bolt	B	A
10	Y42U16000	Adjust E-Ring	A	A
11	Y42U11C00	Spring Cover		
12	Y45F09000	Adjust Plate Cover		A
13	Y45F08000	Adjust Plate		A
14	Y42U98050	Spring (2 pcs.)	A	A
15	Y42U98010	SM-SH11 Cleat Set (Self-aligning mode/Pair/M5x8mm)	A	A
	Y42U98020	SM-SH10 Cleat Set (Fixed mode/Pair/Option/M5x8mm)	A	A
	Y40B98140	SM-SH12 Cleat Set (Front Center Pivot/Pair/Option/M5x8mm)	A	A
* 16	Y42U14200	Cleat Fixing Bolt (M5x8mm/1pc.)	A	A
	Y42U98060	Cleat Fixing Bolt (M5x13.5mm/6pcs./Option)	A	A
17	Y42U15000	Cleat Washer (Black/1pc.)	B	A
	Y42U15010	Cleat Washer (Silver/1pc.)	A	A
18	Y40R98070	SM-PD58 Reflector Unit (Pair/Option)	A	A
	Y40R98080	SM-PD58 Reflector Unit (AS/Pair/Option)	A	A

A: Same parts.

B: Parts are usable, but differ in materials, appearance, finish, size, etc.

Absence of mark indicates non-interchangeability.

Mar.-2013-3026A

© Shimano Inc. A