





# 2011 Product Guide

Being on the leading edge of technology isn't just our history.  
It's our future.

<b>Intro</b>	155
Model Year 2011 Product Matrix	156
Technologies	157
Maxles	162
Reverb	163
<b>Downhill</b>	164
Boxxer	166
Domain	167
Vivid Air	168
Vivid	171
<b>Freeride</b>	172
Totem	174
Domain	175
Argyle	176
<b>All Mountain</b>	178
Lyrik	180
Monarch Plus	182
<b>Trail</b>	184
Revelation	186
Sektor	188
Tora	189
Monarch	190
<b>Cross Country</b>	192
SID	194
Reba	196
Recon Gold	198
Recon Silver	199
Tora	200
Dart	201
Ario	202
Bar	203



# RockShox.

## The original innovator.

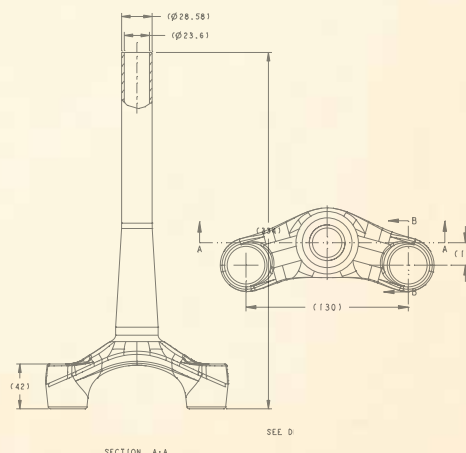
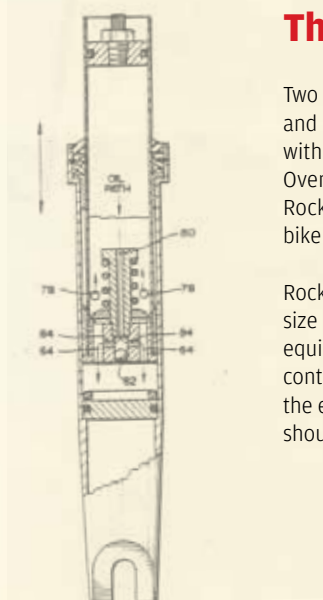
**Like most good ideas, the notion of mountain bike suspension began with a garage, a couple of clever tinkerers and a few beers.**

In this case, the tinkerers were motocross race mechanic Paul Turner and small-time frame builder Keith Bontrager. When their collective knowledge of motorcycle suspension and bike mechanics met their passion for this newfangled sport called mountain biking, the two created something so revolutionary it was immediately scoffed at, as great inventions usually are. Naysayers be damned, these two fellas held their heads up high and presented the first full-suspension bicycle at the premier industry trade show in Long Beach, California. Mountain bikers rocking TIG-welded aluminum frames were in disbelief—"It'll never work! It's too heavy! Arms and legs are all the suspension we'll ever need!"

### That was 1987.

Two years later, Paul Turner joined forces with top-notch suspension designer Steve Simmons, and RockShox was born. The state-of-the-art RS-1 stunned the mountain bike community with its "massive" one-inch upper tubes and "bottomless" 49mm of travel. When Ned Overend, Cindy Devine and Greg Herbold stomped the 1990 UCI World Championship on RockShox suspension, something became very clear: RockShox had just revolutionized bike technology and, in doing so, redefined mountain biking itself.

RockShox was born out of a belief that the mold was meant to be broken. We know one size does not fit all. We know even the longest rides are too short to worry about your equipment. Our patented designs push the limits to bring the utmost in performance, control and adjustability to every product in our line. From our Motion Control damping to the easiest-to-use thru axle on the market, the Maxle, we believe race-proven technologies shouldn't just be for racers.





## MODEL YEAR 2011 FRONT SUSPENSION

	Cross Country	Trail	All Mountain	Freeride	Downhill
\$\$\$				BOXER BOXER WORLD CUP	
				TOTEM TOTEM RC2L TOTEM RC2 DH TOTEM RC	BOXER R2C2 BOXER RC
	SD SID XX WORLD CUP SID WORLD CUP SID XX SID RLT TI SID RLT	REVELATION REVELATION XX WORLD CUP REVELATION XX REVELATION WORLD CUP REVELATION RLT TI REVELATION RLT	LYRIK LYRIK RC2L LYRIK RC2 DH LYRIK RC LYRIK R		DUAL CROWN DOMAIN RC DOMAIN R
	REBA REBA XX 29" REBA RLT TI REBA RLT TI 29" REBA RLT REBA RLT 29" REBA RL REBA RL 29"	REVELATION RL		DOMAIN RC DOMAIN R	
				ARGYLE ARGYLE RCT ARGYLE RC ARGYLE R	
	RECON RECON TK RECON TK 29" RECON RL RECON R	SEKTOR SEKTOR RL SEKTOR TK SEKTOR R			
	TORA TORA TK TORA TK 29"	TORA TORA 302 TORA 289			
	DART DART 3 DART 3 29" DART 2 TK DART 2 DART 1				
\$					

## MODEL YEAR 2011 REAR SUSPENSION

	Cross Country	Trail	All Mountain	Freeride	Downhill
\$\$\$				VIVID air VIVID AIR R2C VIVID AIR R2	
				VIVID VIVID R2C VIVID R2	
			MONARCH plus MONARCH PLUS RC3 MONARCH PLUS R		
	MONARCH MONARCH RT3 MONARCH RT MONARCH R				
	ARIO ARIO RLR ARIO RL ARIO R				
	BAR BAR R				
\$					

Please visit [ROCKSHOX.COM](http://ROCKSHOX.COM) for aftermarket availability.

# TECHNOLOGIES

Every rider, every trail and every riding style is unique. That's why RockShox offers the most adjustable suspension on the market, with damping and spring technologies that redefine the word "plush." We take input from top-level racers to everyday riders in order to bring our customers the technologies they want with features they can use. User-friendly engraved adjusters, travel gradients, trail-tuning pocket guides and downloadable instructional videos make dialing in the features of your suspension easy as pie. We do all this because we know that great suspension means even better rides.

## DAMPING SYSTEMS



### MISSION CONTROL™

The long-travel single-crown fork is put to task by all kinds of riders in every type of terrain. To accommodate the varying needs from the trail to the air, Mission Control's high- and low-speed compression controls, Dual Flow rebound, and threshold control make perfectly tuning your suspension for all-mountain efficiency and big-drop performance an easy turn of a knob. Durable and elegant, the shimmed damper design makes this the most plush and responsive damper for long travel needs. Featured in: Totem, Lyrik

MISSION CONTROL

COMPRESSION CONFIGURATIONS				REBOUND	
LOCKOUT	HIGH SPEED	LOW SPEED	FLOODGATE	DUAL FLOW	
•	•	•	EXTERNAL	•	



### MISSION CONTROL™ DH

We've taken the plush and bombproof design of Mission Control and traded out the threshold for a high-flow compression piston to optimize descent-oriented bump performance. High- and low-speed compression and Dual Flow rebound controls are right at your fingertips, because when you're riding downhill, every second matters. Featured in: BoXXer (Dual Flow Adjust), Totem, Lyrik (Dual Flow)

MISSION CONTROL DH

VARIATIONS	COMPRESSION CONFIGURATIONS		REBOUND	
	HIGH SPEED	LOW SPEED	DUAL FLOW	
•	•	ADJUST		
•	•	•		



### XX MOTION CONTROL

Lightweight and performance oriented, XX Motion Control includes the XLoc remote featuring hydraulic-actuated lockout and adjustable threshold control. Dual Flow rebound and factory-set compression damping make this a no-nonsense damping system with efficient small bump performance for XC and trail. Featured in: SID, Reba, Revelation

XX MOTION CONTROL

COMPRESSION CONFIGURATIONS			REBOUND	
LOCKOUT	REMOTE	FLOODGATE	DUAL FLOW	
•	XLOC	REMOTE	•	



### BLACKBOX MOTION CONTROL

Based on the original Motion Control damper, BlackBox Motion Control adds Dual Flow compression and rebound damping. Separate circuits for low- and high-speed compression, as well as beginning and ending stroke rebound, results in suspension that floats over both stutter bumps and root webs while maintaining big-hit performance. The titanium spring tube and carbon-fiber compression knob are just dead sexy. BlackBox Motion Control is compatible with PushLoc and PopLoc remotes. Featured in: SID, Reba, Revelation

BLACKBOX MOTION CONTROL

COMPRESSION CONFIGURATIONS				REBOUND	
LOCKOUT	REMOTE	LOW SPEED	FLOODGATE	DUAL FLOW	
•	OPTIONAL	•	EXTERNAL	•	



### MOTION CONTROL™

With Motion Control, forks chew up climbs with incredible efficiency while the patented lockout blowoff valve and threshold control immediately absorb any bumps along the way. An elegant design in a simple and lightweight package. Motion Control is compatible with PushLoc and PopLoc remotes. Featured in: SID, Reba, Revelation, Sektor, Argyle, Recon

MOTION CONTROL

VARIATIONS	COMPRESSION CONFIGURATIONS				REBOUND	
	LOCKOUT	REMOTE	LOW SPEED	FLOODGATE	REBOUND	
•	OPTIONAL	•	TOOLED	•		
•	OPTIONAL	•	EXTERNAL	•		
•	OPTIONAL	•	NA	•		



### MOTION CONTROL IS

All the small bump performance of Motion Control with the addition of high-speed compression control through an Integrated SpeedStack specifically designed for smoothing out the big hits seen by long travel forks. A crown-mounted low-speed compression knob lets you optimize the fork to eliminate brake diving and maximize efficiency with ease. Featured in: BoXXer, Totem, Lyrik, Domain

MOTION CONTROL IS

COMPRESSION CONFIGURATIONS		REBOUND	
LOCKOUT		REBOUND	
•		•	

## DAMPING SYSTEMS



### TURNKEY

Ever hit a big rock with your fork locked out? Well, we have too. With this patented RockShox blowoff design, the ride stays smooth due to the small-bump compliance where unexpected hits are absorbed immediately even while locked out. TurnKey is compatible with PushLoc and PopLoc remotes. Featured in: Sektor, Recon, Tora, Dart

#### TURNKEY

COMPRESSION CONFIGURATIONS		
LOCKOUT	REMOTE	REBOUND
-	OPTIONAL	-

## REBOUND DAMPING



### DUAL FLOW

Suspension shouldn't pack up in rock gardens or buck after big drops. That's why Dual Flow incorporates independent damping circuits, allowing separate rebound speeds for big hits and small ones. A user-adjustable knob controls the beginning-stroke (small-hit) rebound, and a factory-set ending-stroke (big-hit) rebound creates the perfect suspension for whatever the trail (or park) throws your way. Now tuning your suspension for your unique needs is as easy as a clockwise or counterclockwise turn. In the RockShox world this is clicking toward the turtle or the "jackalope." Featured in: Totem, Lyrik, SID, Reba, Revelation, Monarch



#### \*NOTE

The jackalope is an imaginary animal of North American folklore (a so-called "fearsome critter") described as a jackrabbit with antelope horns or deer antlers...



### DUAL FLOW ADJUST

Dual Flow Adjust has the effectiveness of Dual Flow's independent damping circuits with the added control of externally adjustable beginning- and ending-stroke rebound. Tuning suspension to actively respond to successive small bumps as perfectly as it absorbs big drops has never been easier. Featured in: BoXXer, Vivid Air, Vivid



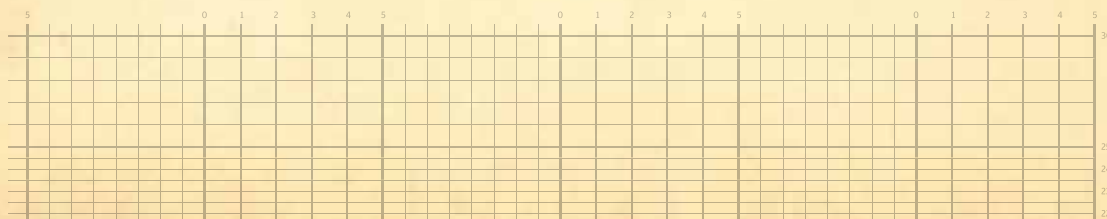
### HOT ROD

Your suspension should never fade before you do—that's why we developed Hot Rod to build fade-free performance into the new Vivid Air and updated Vivid rear shocks. A RockShox-tuned thermoplastic resin core in the adjuster rod expands when your shock heats up, resulting in consistent rebound force no matter how long or aggressive the descent. Featured in: Vivid Air, Vivid

## ROCKSHOX CERTIFIED FLUIDS, TOOLS AND ACCESSORIES

Suspension Oil 2.5W - 1 LITER, 120ml  
 Suspension Oil 5W - 1 LITER, 120ml  
 Suspension Oil 10W - 1 LITER, 120ml  
 Suspension Oil 15W - 1 LITER, 120ml  
 Rear Suspension Damping Fluid 3wt - 16oz, 120ml  
 Rear Suspension Damping Fluid 7wt - 16oz, 120ml  
 RedRum - 16oz  
 Judy Butter - 1oz

Star Nut Setter Tool - 1.5"  
 Star Nut Setter Tool - 1.125"  
 Rear Shock Eyelet Bushing Removal/Install Tool - 12mm  
 High-Pressure Fork/Shock Pump (300 psi Max)  
 BoXXer Air Pump  
 Carbon Headset Spacers - 5mm, 10mm, 15mm



## SPRING AND TRAVEL ADJUSTMENT SYSTEMS



### DUAL AIR

With independently adjustable positive and negative air spring chambers, Dual Air is race or trail ready, highly tunable, and one of the lightest air spring systems on the market. Featured in: SID, Reba, Revelation



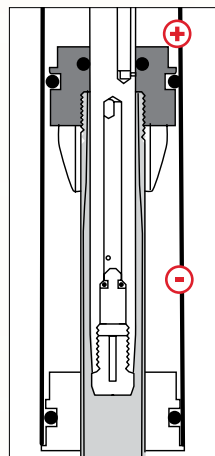
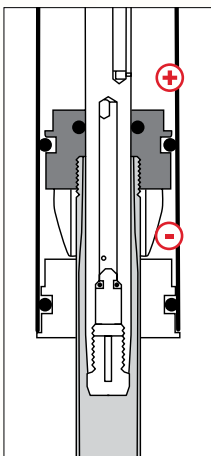
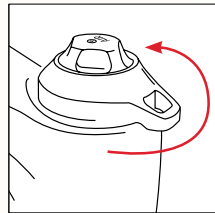
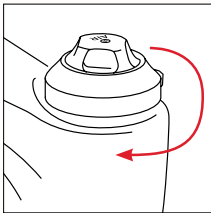
### AIR U-TURN

Based on our Dual Air spring system, Air U-Turn offers 30mm of travel adjustment through a crown-mounted knob. As the travel is changed, the spring rate automatically compensates to give riders a consistent and quality feel at every travel setting. Featured in: Reba



### DUAL POSITION AIR

An easy-to-use detented knob offers long and short travel options with a turn and a click. With approximately 30mm of sag-to-sag travel adjustment, it is designed to simply bring the front of your bike down for climbing prowess. Dual Position Air is sweet and simple, smooth and robust. Bomb downhill with confidence. Click. Climb like a demon. Featured in: Revelation



#### LONG TRAVEL

Turn adjuster clockwise 1 click and weight fork to move into short travel position for climbing efficiency.

#### SHORT TRAVEL

When in short travel position turn adjuster counter clockwise 1 click and unweight fork to return to long travel position.



### 2-STEP AIR

By adding a hydraulic travel adjuster to our Solo Air design, 2-Step Air allows riders to shorten their fork to a minimal travel setting (45mm less travel) for easier climbing or extend the travel all the way for maximum downhill performance. Featured in: Totem, Lyrik



### SOLO AIR

An extremely durable spring system. The positive and negative air spring chambers are simultaneously filled to equal air pressures through a single Schrader valve, simplifying suspension setup while retaining the light weight and plush ride quality of Dual Air. Featured in: Vivid Air, Argyle, Sektor, Recon, Tora, Monarch Plus, Monarch, Ario, Bar



### LONG TRAVEL SOLO AIR

Employs our patented floating negative chamber to optimize the spring curve for long travel forks, providing a consistent feel throughout the travel. Featured in: BoXXer, Totem, Lyrik



### COIL U-TURN

Coil U-Turn offers up to 45mm of travel adjustment on a coil spring with the turn of a crown-mounted external adjuster. As the travel is changed, the spring rate automatically compensates to give riders a consistent and quality feel at every travel setting without affecting preload. Featured in: Domain, Lyrik, Sektor, Tora



### FIXED COIL

The coil spring is a simple, time-tested design with a smooth feel characterized by a linear spring curve. Featured in: BoXXer, Domain, Vivid, Totem, Lyrik, Argyle, Sektor, Recon, Tora, Dart

### BOTTOM OUT



### DROPSTOP

Bottom out adjustment at its finest. Our DropStop technologies control harsh bottoming out by ramping up the spring rate as the suspension nears full compression using either elastomer bumpers or air volume adjustment. Say goodbye to that harsh feel and awful "KER-thunk" sound on even the hardest of landings. Featured in: BoXXer, Vivid



# FEATURES

## CHASSIS



### CARBON CROWN-STEERER

Developed as a BlackBox technology and proven on the race course, the hollow one-piece Carbon Crown-Steerer sheds grams while offering superior stiffness. Featured in: SID, Revelation



### POWER BULGE

Material reinforcement in the lower leg at the bushing increases stiffness and bushing durability.



### TRAVEL GRADIENTS

Measurement gradients indicating the current travel setting are conveniently located on the upper tubes so that you always know how much travel you are running. You won't find this anywhere else but RockShox.



### SAG GRADIENTS

Properly set sag can make or break the way suspension feels, so why should it be configured by eyeballing a zip tie? With this feature, sag percentage gradients are provided on the fork upper tubes and shock damper body, making perfect suspension setup simple, easy and accurate.



### AIR GUIDES

With our easy-to-understand guides for tuning air spring suspension printed right on the fork, setting up suspension to match a rider and enhance his or her riding style takes a matter of seconds.



### 29"

Let's face it. You know what you want from your suspension, which is why we believe in giving our riders the options they desire. You'll find that several of our forks are available in 29-inch models for riders who have a penchant for bigger wheels.



### SPEED LUBE

Through a simple port on the lower leg of the fork, the Speed Lube system allows crazy quick lower leg oil replacement without ever having to pull the fork apart. Maintaining your own fork just got that much easier. Featured in: Totem



MatchMaker X



MatchMaker

## MATCHMAKER



### MATCHMAKER X INTEGRATED

The MatchMaker X clamp offers a clean integrated system that conserves handlebar real estate while putting your XLoc suspension controls, along with your SRAM XX or XO shifters and matching AVID® brake levers, right where you want them. If you're using the XLoc remote, this clamp is built right for you.



### MATCHMAKER COMPATIBLE

Save weight and clutter on the bar with MatchMaker. This system holds AVID® levers, a number of SRAM triggers and the RockShox PushLoc control—all with one tidy, light clamp.

# REMOTE ACTUATION



RockShox is the top innovator of remote suspension controls with the easiest-to-use, most ergonomic and durable remotes available. Because every rider is unique, we offer three variations of actuation, creating a new industry benchmark for on-the-fly adjustability. The control is in your hands.

PUSHLOC



POPLOC ADJUST



POPLOC



### XLOC

This hydraulic lockout offers completely sealed and dependable lockout control through the click of an easy-to-reach ergonomic button that can be triggered with a single thumb press. Press on to unlock, press again to lock. It's that easy. This extremely lightweight remote shaves 60 grams off the PushLoc + BlackBox Motion Control system and is fully integrated with the MatchMaker X.



### PUSHLOC

The PushLoc offers uber-smooth and precise push-push remote-actuated lockout control with a narrow footprint and vertical or horizontal mounts to save valuable handlebar real estate. PushLoc is compatible with MatchMaker for the ultimate in space-saving integration.

XLOC



### POPLOC / POPLOC ADJUST

This simple and convenient remote-actuated lockout changes the way your ride feels with the press of a button. Go from an open and fully active fork to one that is more efficient with a firm feel yet still plenty of small-bump compliance. PopLoc Adjust allows the user to adjust the amount of low-speed compression in the remote's "open" position for additional control.

#### AVAILABLE REMOTE UPGRADE KITS:

- SID 120 XX Motion Control w/XLoc - Left
- SID XX Motion Control w/XLoc - Left
- Revelation/Reba XX Motion Control w/XLoc - Left
- SID 120 BlackBox Motion Control w/PushLoc - Left
- Revelation/Reba/SID BlackBox Motion Control w/PushLoc - Left
- SID 120 Motion Control w/PushLoc - Left
- SID Motion Control w/PushLoc - Left
- SID 120 BlackBox Motion Control w/PushLoc - Left
- Revelation/Reba/Sektor Motion Control w/PushLoc - Left
- Sektor/Recon Gold Motion Control w/PopLoc - Left
- Recon Silver/Tora XC Motion Control w/PopLoc - Left
- PushLoc Remote L/R



# RockShox Maxles



The lightest, easiest-to-use and simply the best quick-release thru axles in mountain biking today!



MAXLE LITE 15mm

MAXLE LITE 20mm

MAXLE LITE DH

REAR MAXLE LITE

## MAXLE SYSTEMS

Who would have thought that an easy-to-use thru axle would revolutionize fork stiffness and control? We did.



### MAXLE LITE

RRP: \$69.95

The tool-free Maxle Lite brings exceptional stiffness and durability to your ride in the lightest, easiest-to-use thru axle system on the market. Now available in 20 x 110mm and 15 x 100mm sizes.

### MAXLE LITE DH

RRP: \$69.95 - 79.95

Designed for the downhill crowd, this tooled version of our Maxle Lite is light and stiff and has loads of clearance.



### REAR MAXLE LITE

RRP: \$79.95

This Maxle gives all the simplicity, speed and stiffness of the Maxle to rear wheels. With a new detented tension adjuster, the Rear Maxle Lite just got even easier to use. Rear Maxle Lite is a 12mm thru axle available in 135, 142 or 150mm lengths.

Standard



MAXLE LITE 20mm Cut-Away

- Improved design featuring single-sided expansion and detented quick-release preload.
- The improved Maxle Lite is easier to use, lighter and stiffer than ever before.

# reverb

RRP: \$379.95



**new for 2011!**

**CUSTOMIZED CONTROL FOR ANY MOUNTAIN BIKE AND MOUNTAIN BIKE RIDER.**

When you're ripping through rolling terrain, cranking the pedals one minute and getting off the back of the bike the next, no seat height is "just right." The all-new Reverb gives you 125mm of infinite seat-height adjustment and control of your return speed in a hydraulically actuated remote package. A custom sealing system means the plush and consistent feel of this seat post won't degrade, no matter how much the weather does.

- 125mm adjustment range
- Hydraulic remote actuation
- Adjustable height reduction and return speed
- Triple-lipped energized sealing system

Designed for	Mountain Biking
Weight	515 grams
Post Diameters	30.9mm, 31.6mm
Lengths	380mm, 420mm
Offset	Zero / 2-Bolt
Adjustment Actuation	Reverb Remote
Adjustment Range	125mm
Shaft Material	3D Forged 7050 Alloy
Head Material	7050 Forged Alloy
Tech Features	Adjustable return speed at the handlebar remote

\*Weight based on 380mm length 30.9mm diameter, with discrete remote and 1300mm hose length. Uses Speed Lube as Bleed Kit.



**REVERB REMOTE  
CUSTOMIZED CONTROL.**







# DOWNHILL



# BOXXER

WC  
RRP: \$1999.95

R2C2  
RRP: \$1499.95

RC  
RRP: \$999.95



## BOXXER THE LEGEND STARTS HERE.

Featuring long-travel-specific Mission Control DH damping, DropStop bottom-out systems and a 35mm dual-crown chassis, the legendary BoXxer is downright fast. Upgraded damper technologies and a revalved design give an unwaveringly smooth and consistent feel to the reliable Coil and the decadently light, adjustable and fully redesigned Solo Air spring. Striking a perfect balance between weight, stiffness and performance, this fork isn't for those who live to ride. It's for those who live to ride faster.

### Updates for Model Year 2011

- Updated damping featured in World Cup and R2C2 models for increased wheel traction.
- World Cup receives entirely new Solo Air spring for reduced friction and increased durability.
- Updated Maxle Lite DH for additional stiffness and bearing preload.
- New damping adjust knob shapes and detents for increased grip and engineered for ease of use.
- Available colors: ● ● ● ●

RECOMMENDED REAR SHOCK: VIVID OR VIVID AIR



PLATFORM					DAMPING SYSTEM	SPRING	ADJUSTMENTS							STEERER	CROWN	UPPER TUBES	LOWERS				
	MODEL	INTENDED USE	TRAVEL	WEIGHT	MISSION CONTROL DH	MOTION CONTROL IS	DUAL FLOW ADJUST REBOUND	SOLO AIR	COIL	EXTERNAL BEGINNING AND ENDING STROKE REBOUND	EXTERNAL REBOUND	HIGH AND LOW SPEED COMPRESSION	LOW SPEED COMPRESSION	SPRING VIA AIR PRESSURE	DROPTOP AIR VOLUME ADJUST	DROPTOP BUMPERSYSTEM	INTERNAL SPRING VIA PRELOAD	ALUMINUM 1 1/8"	FORGED 6061 T-6 ALUMINUM DIRECT MOUNT STEER COMPATIBLE	35MM 7000 SERIES ALUMINUM LOW FRICTION ANODIZED	MAGNESIUM MAXLE LITE DH 20MM AXLE POST-BUS-INDENT
BOXXER	WORLD CUP	DH	200mm	2714g (5.98 lbs)	•	•	•	•	•	•	•	•	•	•	•	•	•	•	•	•	•
	R2C2	DH	200mm	3009g (6.63 lbs)	•	•	•	•	•	•	•	•	•	•	•	•	•	•	•	•	•
	RC	DH	200mm	2882g (6.35 lbs)	•	•	•	•	•	•	•	•	•	•	•	•	•	•	•	•	•

\*Weight based on 265mm 1 1/8" steerer with Maxle Lite DH and short upper crown / Maximum recommended rotor size: 210mm

COLORS: BOXXER RED, BLACK, WHITE / WORLD CUP MODEL IS ALSO AVAILABLE IN KERONITE™ GREY FINISH

FEATURING:  
POWER BULGE  
AIR GUIDES  
SAG GRADIENTS  
DROP STOP  
MAXLE LITE DH



RRP: \$949.95



**DOMAIN  
DUAL-CROWN DELIGHT.**

Domain's park-proven durability and performance in a beefy-as-hell 200mm dual-crown chassis will make you wonder what this fork can't do. Excellent for the hard days of summer in the park.

**All New for Model Year 2011**

- 35mm chassis based on the legendary BoXXer.
- Features new Maxle Lite.
- 35mm hard-chromed upper tubes for smooth action and durability.
- Available colors: ● ○



RECOMMENDED REAR SHOCK: VIVID OR VIVID AIR

PLATFORM					DAMPING SYSTEM	SPRING	ADJUSTMENTS	STEERER	CROWN	UPPER TUBES	LOWERS
	MODEL	INTENDED USE	TRAVEL	WEIGHT	NOTION CONT. PULL IS	COIL	EXTERNAL REBOUND LOW-SPEED COMPRESSION	INTERNAL SPRING VIA PRELOAD	ALUMINUM 1 1/8"	FORGED 6061-T6 ALUMINUM DIRECT-MOUNT STEM COMPATIBLE	35MM 1.90-SERIES STAPERED WALL MACHINED, MAXLE LITE 20MM AXLE POST-ROCK MOUNT
<b>DOMAIN</b>	RC	DH	200mm	3424g (7.55 lbs)	•	•	•	•	•	•	•
DUAL CROWN	R	DH	200mm	3447g (7.6 lbs)		•	•	•	•	•	•

COLORS: BLACK, WHITE / OPTIONAL DECALS TO MATCH SRAM XO, X9 AND X7 COLORWAYS

FEATURING: POWER BULGE MAXLE LITE

\*Weight based on 265mm 1 1/8" steerer with Maxle Lite and short upper crown / Maximum recommended rotor size: 210mm





# VIVID AIR

RRP: \$749.95



VIVID AIR R2

VIVID AIR R2C

## VIVID AIR NOT YOUR FATHER'S AIR SHOCK.

Introducing an obscenely lightweight and totally new air spring system built to tackle World Cup downhill competitions, big mountain riding and aggressive all-mountain excursions. Dropping a whopping 400g from the Vivid Coil design, the Vivid Air's unique fade-free performance ensures the entire run is smooth and controlled, right down to the last drop. The supple and consistent feel of a coil shock, with the adjustability, tunability and unparalleled weight savings of an air shock—the Vivid Air redefines downhill performance.

### All New for Model Year 2011

- New twin-tube Solo Air spring for extremely supple performance and heat management.
- Hot Rod thermal-compensating needle for fade-free rebound force.

PLATFORM	MODEL	INTENDED USE	WEIGHT	LOW-SPEED COMPRESSION	DUAL FLOW ADJUST	TWIN-TUBE SOLO AIR	EXTERNAL LOW-SPEED COMPRESSION	REBOUND AND ENDING STROKE REBOUND	SPRING VIA AIR PRESSURE	HARD ANODIZED FORGED ALUMINUM	12.7MM TDS ALUMINUM	SHAFT
VIVID AIR	R2C	DH, FR, AM	530g (1.17 lbs)	•	•	•	•	•	•	•	•	•
FEATURING: HOT ROD AIR GUIDES	R2	DH, FR, AM	520g (1.15 lbs)	•	•	•	•	•	•	•	•	•

\*Weight based on 216 x 63.5mm, without hardware / Available Configurations: 240 x 76mm (9.5 x 3.0"), 229 x 70mm (9.0 x 2.75"), 222 x 70mm (8.75 x 2.75"), 216 x 63.5mm (8.5 x 2.5"), 200 x 57mm (7.875 x 2.25"), 200 x 51mm (7.875 x 2.0"), 200 x 51mm (7.875 x 2.0")

# Hot Rod Technology

## 42% Reduction in fade

At higher than standard operating temperatures (190°F), a metal needle produces 290lbs of rebound force while Hot Rod produces 334lbs of rebound force.



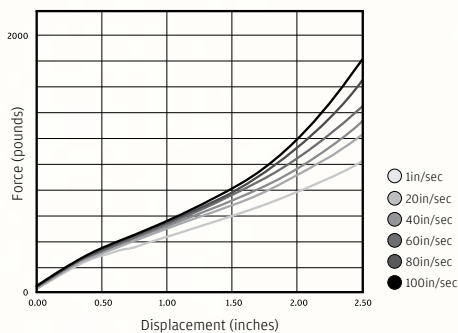
### HOT ROD TECHNOLOGY

Your suspension should never fade before you do—that’s why we developed Hot Rod to build fade-free performance into the new Vivid Air and updated Vivid rear shocks. A RockShox-tuned thermoplastic resin core in the adjuster rod expands when your shock heats up, resulting in consistent rebound force no matter how long or aggressive the descent.

### Speed-Sensitive Air Spring

VIVID AIR SPRING / Multiple Shaft Speeds

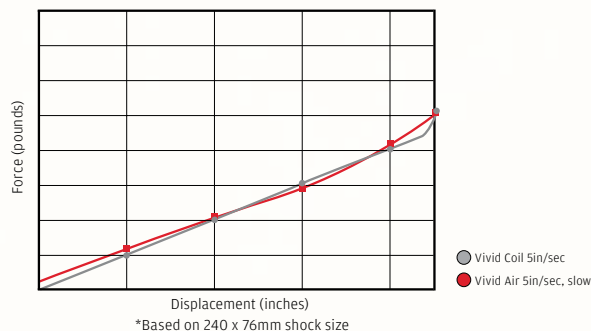
Over successive hits or a high-speed hit, the air spring will absorb the same amount of energy as a coil spring but will do it without using as much shaft travel. Boiled down—you ride higher in the stroke, leaving you with more available shaft travel for that next huge hit.



### Linear Air Spring

VIVID AIR VS. VIVID COIL / Spring Curves

Coil “feel” with all the weight and adjustability benefits of an air spring.







VIVID

RRP: \$499.95

Not including Spring or hardware



VIVID R2



VIVID R2C

**VIVID**  
**BEAUTY AND BRAVN. THE ULTIMATE COIL SHOCK.**

This sexy siren of downhill racing and freeride combines extreme durability with adjustments that matter when you're going big. Laser-etched controls let you dial in beginning- and ending-stroke rebound as well as low-speed compression to make this shock fly through rock gardens just as smoothly as it absorbs a sudden drop in altitude—but when those drops happen, the adjustable DropStop bottom-out system will be there to cushion the landing.

**Updates for Model Year 2011**

- Hot Rod thermal-compensating needle for fade-free rebound force.
- Updated ending-stroke rebound control knob—now 90° architecture.

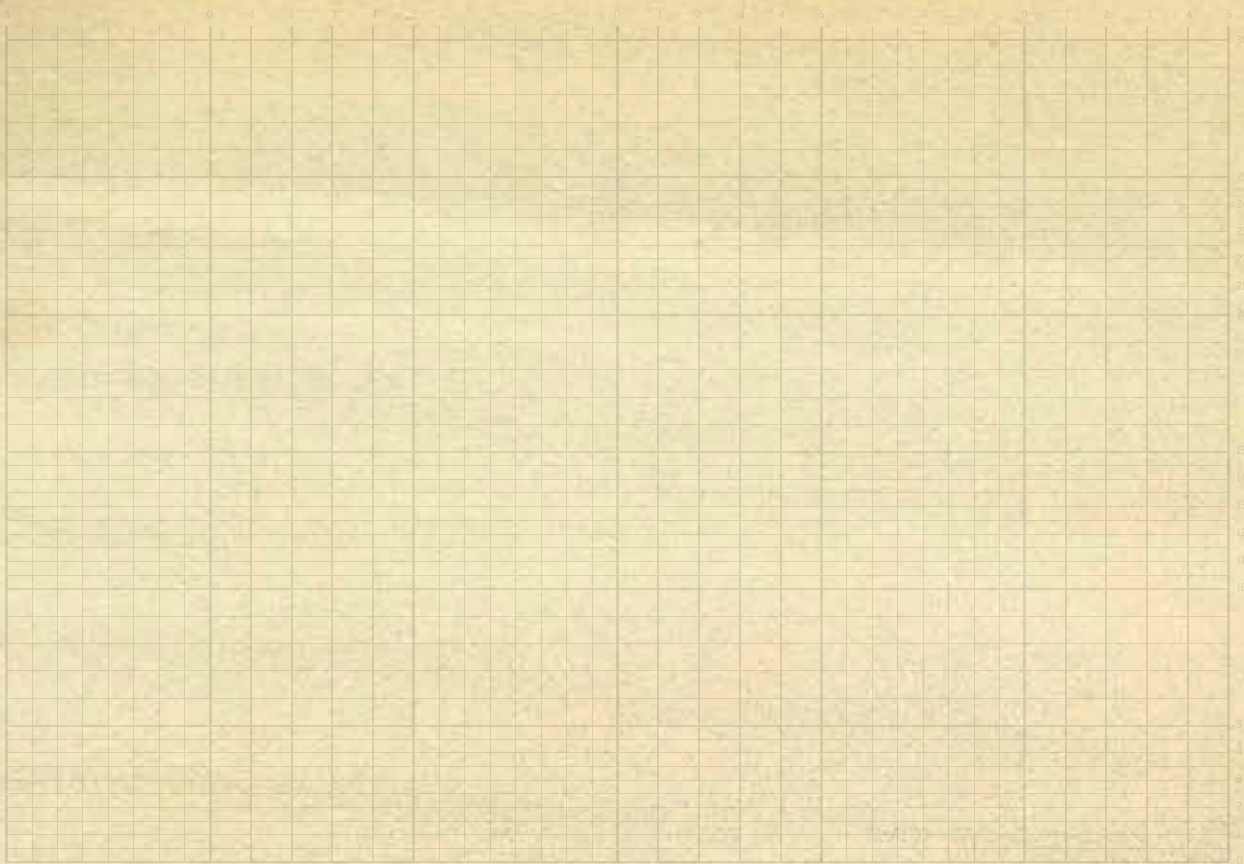
PLATFORM	MODEL	INTENDED USE	WEIGHT	LOW-SPEED COMPRESSION	DUAL FLOW ADJUST	STEER CHILL ZONE—650 LBS IN 90-LB INCREMENTS AVAILABLE	EXTERNAL LOW-SPEED COMPRESSION	BEGINNING AND ENDING-STROKE REBOUND	SPRING VIA PRELOAD	DROPTOP BOTTOM-OUT SYSTEM	HARD ANODIZED FORGED ALUMINUM	12.7MM TOTS ALUMINUM	SHAFT
VIVID	R2C	DH, FR, AM	412g (.91 lb)*	•	•	•	•	•	•	•	•	•	•
	R2	DH, FR, AM	402g (.88 lb)*	•	•	•	•	•	•	•	•	•	•

FEATURING: DROP STOP HOT ROD

\*Weight based on 216 x 63.5mm without hardware or spring / Available Configurations: 267 x 89mm (10.5 x 3.5"), 240 x 76mm (9.5 x 3.0"), 229 x 70mm (9.0 x 2.75"), 222 x 70mm (8.75 x 2.75"), 216 x 63.5mm (8.5 x 2.5"), 216 x 60mm (8.5 x 2.36"), 200 x 57mm (7.875 x 2.25"), 200 x 51mm (7.875 x 2.0")

[56]

638,723  
 2,196,089  
 2,472,841  
 3,199,638  
 3,208,767  
 3,232,390  
 3,301,575  
 3,459,441  
 3,810,659  
 3,891,236  
 3,912,054  
 3,964,765  
 4,057,264  
 4,145,067  
 4,367,882  
 4,392,664  
 4,502,672  
 4,515,384  
 4,553,769  
 4,573,697





**FREERIDE**

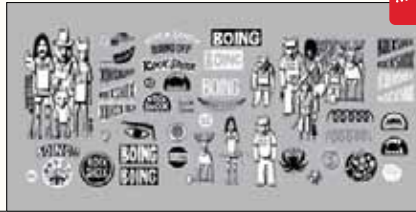


RC2L  
RRP: \$1999.95

RC2DH  
RRP: \$1599.95

RC  
RRP: \$1499.95

NEW



STICKER KIT 5.0



**TOTEM**

**SIZE DOES MATTER.**

With 180mm of travel on a 2-Step, Solo Air or Coil spring; 1 1/8", 1.5" or tapered steerer; and huge 40mm upper tubes, the Totem is a battle-ax that lets you charge into (or off of) any terrain, from tire-buzzing steps to pucker-inducing drops. A new Maxle Lite and performance to boost make this fork do something no other does—give you the confidence to commit.

And yes, it comes with a Totem Sticker Kit for visual customization.

**Updates for Model Year 2011**

- Features New Maxle Lite.
- SRAM XO color-match graphics available.
- Sticker Kit V5.0 by Geoff McFetridge ([www.championdontstop.com](http://www.championdontstop.com)). Customize your Totem with RockShox Flora and Fauna and a bit of Boing.
- Available colors:

RECOMMENDED REAR SHOCK: VIVID OR VIVID AIR



PLATFORM	MODEL	INTENDED USE	TRAVEL	WEIGHT	MISSION CONTROL	MISSION CONTROL DH	MOTION CONTROL IS	DUAL FLOW	2-STEP	LONG-TRAVEL SOLO AIR	COIL	EXTERNAL BEGINNING-STROKE REBOUND	EXTERNAL REBOUND	HIGH-SPEED COMPRESSION	LOW-SPEED COMPRESSION	TOOLED FLOUBRITE LING SWITCH	SPRING VIA AIR PRESSURE	EXTERNAL TRAVEL	SPRING VIA PRELOAD	ALUMINUM 1 1/8", 1.5" TAPERED	FORGED AL 06 TV 1.5" ALUMINUM	40MM 7000 SERIES STRAIGHT WALL ALUMINUM, LOW-FRICTION ANODIZED	40MM 7000 SERIES STRAIGHT WALL ALUMINUM, LOW-FRICTION ANODIZED	MAGNESIUM MAXLE LITE 20MM AXLE-POST-DISC MOUNT	LOWERS		
<b>TOTEM</b>  COLORS: GALVANIZED, BLACK, WHITE / OPTIONAL DECALS TO MATCH SRAM XO COLORWAYS  FEATURING: POWER BULGE, AIR GUIDES, SAC GRADIENTS, SPEEDLUBE, STICKER KIT V5.0, MAXLE LITE	RC2L	FR	135 - 180mm	2867g (6.32 lbs)	•																						
			180mm	2627g (5.79 lbs)	•																						
			180mm	2867g (6.32 lbs)	•																						
	RC2 DH	FR	135 - 180mm	2867g (6.32 lbs)		•																					
			180mm	2627g (5.79 lbs)		•																					
			180mm	2867g (6.32 lbs)		•																					
	RC	FR	180mm	2867g (6.32 lbs)		•																					

\*Weight based on 265mm 1 1/8" steerer with Maxle Lite / Maximum recommended rotor size: 210mm

DOMAIN RC (Featured) 180mm travel



RC  
RRP: \$849.95

R  
RRP: \$799.95



**DOMAIN**

**BE THE MASTER OF YOUR DOMAIN.**

Burly and beautiful, the Domain offers competition-level performance in a package that holds up to real-world demands. Stocky 35mm upper tubes, Motion Control IS damping and a choice between 115-160mm Coil U-Turn, 160mm and 180mm Coil springs.

**Updates for Model Year 2011**

- Features New Maxle Lite.
- Available colors: ● ● ○



RECOMMENDED REAR SHOCK: VIVID

PLATFORM					DAMPING SYSTEM	SPRING	ADJUSTMENTS	STEERER	CROWN	UPPER TUBES	LOWERS			
MODEL	INTENDED USE	TRAVEL	WEIGHT	MOTION CONTROL IS	COIL U-TURN	COIL	EXTERNAL REBOUND	LOW-SPEED COMPRESSION	EXTERNAL TRAVEL	SPRING VIA PRELOAD	4130 STEEL 1 1/8" ADJUSTING TAPERED 1 1/8" - 1.5" AVAILABLE	FORGED HOLLOW 41.65 TV ANODIZED ALUMINUM CHROME	35MM 4130 TAPERED-HALL STEEL	MAGNESIUM MAXLE 20MM AXLE POST-DISC MOUNT
DOMAIN	RC	FR, AM	115 - 160mm	2913g (6.42 lbs)	•	•	•	•	•	•	•	•	•	•
			160/180mm	2827g (6.23 lbs)	•	•	•	•	•	•	•	•	•	•
DOMAIN	R	FR, AM	115 - 160mm	2868g (6.32 lbs)	•	•	•	•	•	•	•	•	•	•
			160/180mm	2780g (6.12 lbs)	•	•	•	•	•	•	•	•	•	•

\*Weight based on 265mm 1 1/8" steel steerer with Maxle Lite / Maximum recommended rotor size: 210mm

COLORS: DIFFUSION BLACK, BLACK, WHITE / OPTIONAL DECALS TO MATCH SRAM X9 COLORWAYS

FEATURING: POWER BULGE MAXLE LITE





**ARGYLE**

RCT  
RRP: **\$949.95**

R  
RRP: **\$619.95**



**ARGYLE**

**TAKE TO THE AIR.**

Jumping is all about control. The more control you have, the higher you go. With sturdy 32mm upper tubes, the Maxle Lite thru axle and externally adjustable Motion Control damping, the sky is the limit. Adding an even longer and lighter 140mm chassis to the Argyle lineup, this fork gives you the precision to dig deeper, go higher and nail the landing so smoothly all you'll hear is silence.

**Updates for Model Year 2011**

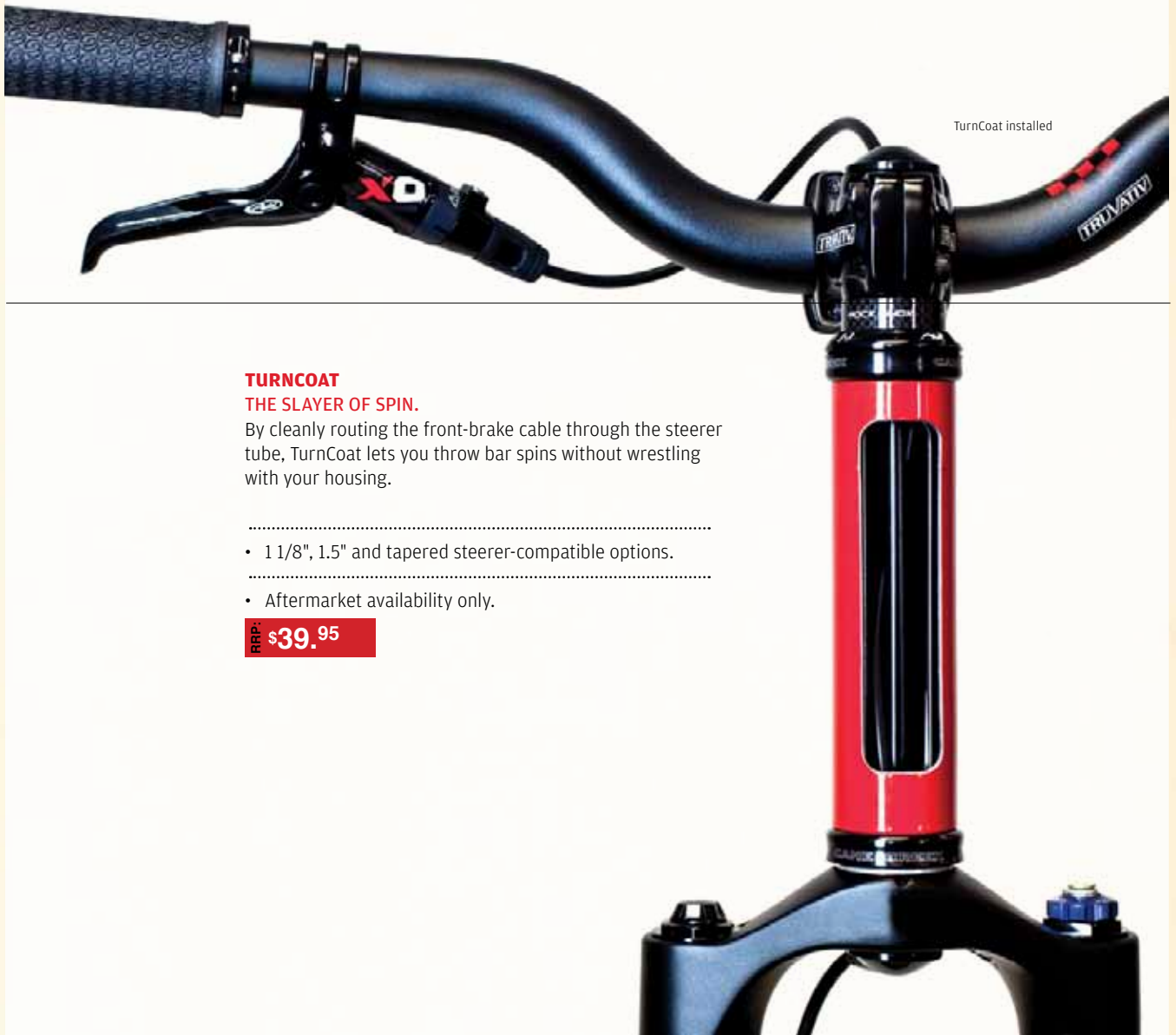
- New option for "Slopestyle" at 140mm of travel featuring aluminum upper tubes.
- Features new Maxle Lite.
- New BoXXer RED color option.
- Lighter weight.
- Available colors:



PLATFORM					DAMPING SYSTEM	SPRING	ADJUSTMENTS			STEERER	CROWN	UPPER TUBES	LOWERS			
	MODEL	INTENDED USE	TRAVEL	WEIGHT	MOTION CONTROL	SOLD AIR	COIL	EXTERNAL AIR-BUILDUP	LOW-SPEED COMPRESSION	TOOL-LESS LOCKOUT	SPRING VIA AIR PRESSURE	SPRING VIA PRELOAD	ALUMINUM 1 1/8"	FOR RED, 6061 T-6 ALUMINUM	32MM 4130 TAPERED-WALL STEEL, CHROME	MAGNESIUM, MAXLE LITE 20MM AXLE IS DISC MOUNT
<b>ARGYLE</b>	RCT	FR	80/100/140mm	2016g (4.44 lbs)	•	•	•	•	•	•	•	•	•	•	•	•
	RC	FR	80/100mm	2526g (5.56 lbs)	•	•	•	•	•	•	•	•	•	•	•	•
	R	FR	80/100mm	2480g (5.46 lbs)		•	•				•	•	•	•	•	•

\*Weight based on 265mm 1 1/8" steerer with Maxle Lite / Maximum recommended rotor size: 210mm

COLORS:  
BOXXER RED, BLACK,  
WHITE  
FEATURING:  
AIR GUIDES  
MAXLE LITE



**TURNCOAT**  
**THE SLAYER OF SPIN.**

By cleanly routing the front-brake cable through the steerer tube, TurnCoat lets you throw bar spins without wrestling with your housing.

- .....
- 1 1/8", 1.5" and tapered steerer-compatible options.
- .....
- Aftermarket availability only.

RRP: **\$39.95**

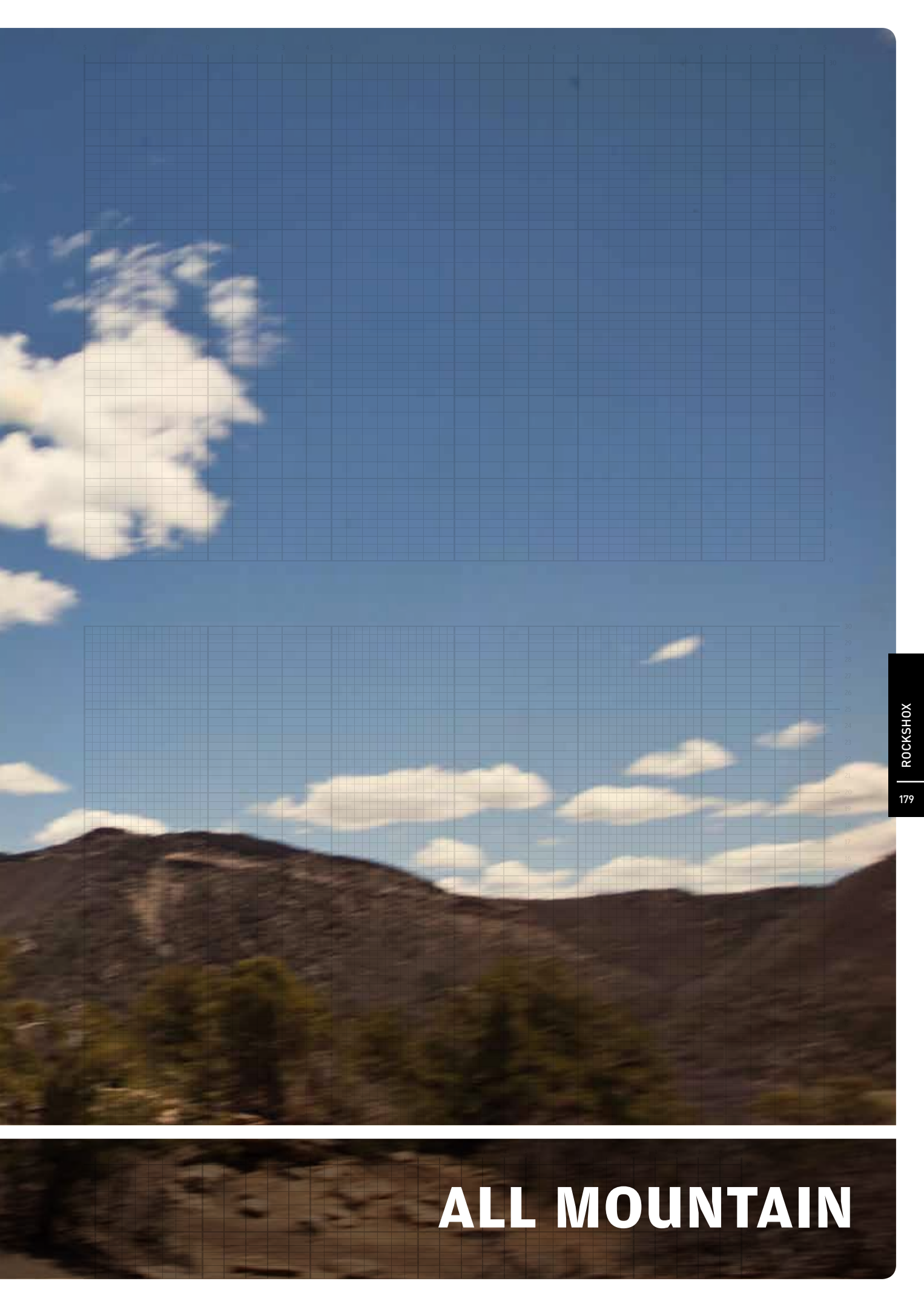


1 1/8"

1.5"

Tapered





# ALL MOUNTAIN

LYRIK RC2 DH (Featured) 170mm travel



RC2L  
RRP: \$1649.95

RC2DH  
RRP: \$1549.95

RC  
RRP: \$1449.95

R  
RRP: \$1399.95



**LYRIK**  
**CHARGE UP. BOMB DOWN. RINSE AND REPEAT.**

With 160 or 170mm travel options, the ability to choose the best damping system for your needs, and a new Maxle Lite thru axle, the Lyrik's already epic offering just got leaner and meaner. Sure, the efficient and nimble 35mm chassis design will get you to the top of the mountain. But it's the smooth control on the downhill that will drive you to go back to the top again and again.

**Updates for Model Year 2011**

- Features new Maxle Lite.
- SRAM X0 color-match graphics available.
- Available colors: ● ● ○

Recommended Rear Shock: Monarch Plus and Monarch



PLATFORM				DAMPING SYSTEM		SPRING		ADJUSTMENTS				STEERER	CROWN	UPPER TUBES	LOWERS												
MODEL	INTENDED USE	TRAVEL	WEIGHT	MISSION CONTROL	MISSION CONTROL DH	MOTION CONTROL IS	DUAL FLOW	2-STEP	LONG TRAVEL SOLD AIR	COIL 18-TURN	COIL	EXTERNAL BEGINNING-STROKE REBOUND	EXTERNAL REBOUND	HIGH AND LOW-SPEED COMPRESSION	LOW-SPEED COMPRESSION	TUNED ELONGATE AND SWITCH	SPRING VIA AIR PRESSURE	EXTERNAL TRAVEL	SPRING VIA PRELOAD	ALUMINUM 1 1/8", 1.5" TAPERED 1 1/8" - 1.5" AVAILABLE	FORGED 100% AL 6061 T6	35MM, 7000 SERIES STRAIGHT-WALL ALUMINUM LOW-FRICTION (MODIFIED WITH TRAVEL GRADIENTS)	MAGNESIUM MAXLE LITE 30MM AXLE POST-BUCK MOUNT				
<b>LYRIK</b>  COLORS: DIFFUSION BLACK, BLACK, WHITE / OPTIONAL DECALS TO MATCH SRAM X0 & X9 COLORWAYS  FEATURING: POWER BULGE AIR GUIDES TRAVEL GRADIENTS MAXLE LITE	RC2L	AM	115 - 160mm	2393g (5.27 lbs)	•							•	•	•	•	•	•	•	•	•	•	•	•				
			160/170mm	2180g (4.80 lbs)	•		•							•	•	•	•	•	•	•	•	•	•	•	•		
			115 - 160mm	2426g (5.34 lbs)	•		•							•	•	•	•	•	•	•	•	•	•	•	•	•	
			160/170mm	2369g (5.22 lbs)	•		•							•	•	•	•	•	•	•	•	•	•	•	•	•	
	RC2 DH	AM	115 - 160mm	2393g (5.27 lbs)		•	•						•	•	•	•	•	•	•	•	•	•	•	•	•		
			160/170mm	2180g (4.80 lbs)		•	•	•						•	•	•	•	•	•	•	•	•	•	•	•	•	
			115 - 160mm	2426g (5.34 lbs)		•	•	•						•	•	•	•	•	•	•	•	•	•	•	•	•	•
			160/170mm	2369g (5.22 lbs)		•	•	•						•	•	•	•	•	•	•	•	•	•	•	•	•	•
	RC	AM	115 - 160mm	2381g (5.24 lbs)			•						•	•	•	•	•	•	•	•	•	•	•	•	•		
			160/170mm	2168g (4.77 lbs)			•							•	•	•	•	•	•	•	•	•	•	•	•	•	
			115 - 160mm	2412g (5.31 lbs)			•							•	•	•	•	•	•	•	•	•	•	•	•	•	•
			160/170mm	2357g (5.19 lbs)			•							•	•	•	•	•	•	•	•	•	•	•	•	•	•
R	AM	115 - 160mm	2340g (5.15 lbs)				•					•	•	•	•	•	•	•	•	•	•	•	•	•			
		160/170mm	2127g (4.68 lbs)				•						•	•	•	•	•	•	•	•	•	•	•	•	•		
		115 - 160mm	2371g (5.22 lbs)					•					•	•	•	•	•	•	•	•	•	•	•	•	•	•	
		160/170mm	2316g (5.10 lbs)						•				•	•	•	•	•	•	•	•	•	•	•	•	•	•	

\*Weight based on 265mm 1 1/8" steerer with Maxle Lite / Maximum recommended rotor size: 210mm



monarch plus

RRP: \$599.95



MONARCH PLUS RC3  
(High Volume Can Pictured)



MONARCH PLUS R  
(High Volume Can Pictured)

**MONARCH PLUS**

Monarch Plus fuses the exemplary weight of the Monarch with an all-new Solo Air system and damper design similar to Vivid Air to create a lightweight package that tackles all-mountain riding like it was born to bomb downhill. This air shock with piggyback reservoir incorporates Dual Flow rebound and compression, allowing you to dial up the performance perfect for your desires—especially when all you want is to go farther, faster.

**All-New Platform for Model Year 2011**

- New Solo Air spring.
- New damper based on Monarch and Vivid Air damping systems.
- New forged eyelet.

PLATFORM	MODEL	INTENDED USE	WEIGHT	HYDRAULIC WITH ITP	SOLO AIR	EXTERNAL 3-POSITION COMPRESSOR	BEGINNING-STROKE REBOUND	SPRING VIA AIR PRESSURE	HARD ANODIZED FORGED ALUMINUM	9MM 7075 ALUMINUM	SHAFT
MONARCH PLUS	RC3	AM	355g (.78 lb)	•	•	•	•	•	•	•	•
	R	AM	350g (.77 lb)	•	•	•	•	•	•	•	•

FEATURING: AIR GUIDES, SAG GRADIENTS

\*Weight based on 216 x 63mm, without hardware / Available Configurations: 190 x 50mm (7.5 x 2.0"), 200 x 50 or 57mm (7.875 x 2.0 or 2.25"), 216 x 63mm (8.5 x 2.5"), 222 x 66mm (8.75 x 2.6") / High Volume Air can - available



**WHEN ALL YOU WANT  
IS TO GO FARTHER,  
FASTER.**





**ROCK  
SHOX**



# TRAIL



# REVELATION

XXWC  
RRP: \$1699.95

XX  
RRP: \$1199.95

RLT Ti  
RRP: \$1099.95

RLT  
RRP: \$949.95



## REVELATION

### TODAY'S REVELATION: RIDE MORE.

This year's Revelation brings an all-new Dual Position Air spring system to the table, adding approximately 30mm of sag-to-sag, on-the-fly, travel adjustment to this proven lightweight platform. The smooth responsiveness provided by the various Motion Control damping systems, paired with the confidence that comes from ultra-stiff 32mm aluminum upper tubes, Maxle Lite and 150mm travel options, is epic. Even when the trail is hell, this fork is pure heaven.

### Updates for Model Year 2011

- New World Cup model with carbon-fiber tapered-crown steerer.
- New Dual Position Air travel adjust system. NEW
- New Keronite® Grey finish option on World Cup model saves up to 20 grams.
- Updated detented compression adjustment for RLT model.
- RL and RLT models upgraded to Dual Flow rebound.
- New lighter and stiffer Maxle Lite, including 15 x 100mm.
- New clear-coated graphics and available SRAM XO color-match decals.
- Available colors: ● ○ ●



PLATFORM				DAMPING SYSTEM	SPRING	ADJUSTMENTS			STEERER	CROWN	UPPER TUBES	LOWERS	REMOTE												
MODEL	INTENDED USE	TRAVEL	WEIGHT (* INCLUDES REMOTE)	XX MOTION CONTROL	BLACKBOX MOTION CONTROL	MOTION CONTROL	DUAL FLOW REBOUND	DUAL AIR	DUAL POSITION AIR	EXTERNAL BEGINNING-STROKE REBOUND	LOW-SPEED COMPRESSION	EXTERNAL FLOODEGATE AND LOCKOUT	TUNED FLOODEGATE AND EXTENSION LOCKOUT	SPRING VIA AIR PRESSURE	EXTERNAL TANK	TAPERED CARBON CROWN STEERER	ALUMINUM 1 1/8" OR TAPERED AVAILABLE	FORGED, HOLLOW 6061-T-6 ALUMINUM	32MM, 7000 SERIES TRAIL-CROWN ALUMINUM, LOW-FRICTION ANODIZED	MAGNESIUM POST-MOUNTED DISC BRAKE MAXLE LITE	XLOC	PUSHLOC™ OPTION			
<b>REVELATION</b>  COLORS: BLACK, WHITE, KEROHITE™, GREY FINISH / SRAM X0 COLOR MATCH DECALS AVAILABLE  FEATURING: POWER BULGE AIR GUIDES TRAVEL GRADIENTS CARBON CROWN STEERER MAXLE LITE	XX World Cup	TR	130/140/150mm	1489g (3.28 lbs)	•																				
			120 - 150mm	1580g (3.49 lbs)	•																				
	XX	TR	130/140/150mm	1636g (3.61 lbs)	•																				
			120 - 150mm	1727g (3.81 lbs)	•																				
	World Cup	TR	130/140/150mm	1489g (3.28 lbs)	•																				
			120 - 150mm	1570g (3.46 lbs)	•																				
	RLT Ti	TR	130/140/150mm	1636g (3.61 lbs)		•																			
			120 - 150mm	1727g (3.81 lbs)		•																			
	RLT	TR	130/140/150mm	1620g (3.57 lbs)			•																		
			120 - 150mm	1701g (3.75 lbs)			•																		
	RL	TR	130/140/150mm	1620g (3.57 lbs)			•																		
			120 - 150mm	1701g (3.75 lbs)			•																		

\*Weight based on 265mm 1 1/8" steerer or tapered carbon crown steerer where applicable, 9mm axle / Maximum recommended rotor size: 210mm



# SEKTOR

RL  
RRP: \$649.95

TK  
RRP: \$599.95

R  
RRP: \$519.95






## SEKTOR

### THE RIGHT FORK FOR ANY SINGLETRACK MISSION.

Offering a bevy of damper and spring options, including Motion Control, TurnKey, Coil U-Turn and Solo Air, Sektor remains the clear choice for real-world trail bikes and real-world riders. When what's around the bend remains to be seen, the Sektor's stout 32mm upper tubes, Maxle Lite options and external rebound adjustment give you the control and responsiveness to explore at speed.

### New for Model Year 2011

- Travel up to 150mm.
- 3 axle types: 9mm QR, 15 x 100mm or 20 x 110mm with new lighter, stiffer Maxle Lite.
- 3 aluminum steerer types: 1 1/8", 1.5" and tapered.
- Aluminum controls.
- Available colors:   

RECOMMENDED REAR SHOCK: MONARCH AND ARIO

PLATFORM	MODEL	INTENDED USE	TRAVEL	WEIGHT	MOTION CONTROL	TURNKEY	SOLO AIR	COIL U-TURN	COIL	EXTERNAL REBOUND	LOW-SPEED COMPRESSION	EXTERNAL FLOORTIGHT AND LOCKOUT	EXTERNAL LOCKOUT	SPRING VIA AIR PRESSURE	EXTERNAL TRAVEL	4130 STEEL 1 1/8"	ALUMINUM 1 1/8", 1.5" OR 1.5 TO 1 1/8" TAPERED AVAILABLE	FORGED HOLLOW 6061 T-6 ALUMINUM	32MM, 700-SERIES STRAIGHT-WALL ALUMINUM, LOW-FRICTION ANODIZED	AMC SERIES POST-MOUNT DISC BRAKE OPTION, 15 OR 20MM MAXLE LITE	PUSHLOC, POPLOC OPTION	REMOTE			
SEKTOR	RL	TR	130/140/150mm	1837g (4.05 lbs)	•	•	•	•	•	•	•	•	•	•	•	•	•	•	•	•	•	•			
			110 - 150mm or 100 - 140mm	2108g (4.65 lbs)	•	•	•	•	•	•	•	•	•	•	•	•	•	•	•	•	•	•	•	•	
			130/140/150mm	2119g (4.67 lbs)	•	•	•	•	•	•	•	•	•	•	•	•	•	•	•	•	•	•	•	•	
	TK	TR	130/140/150mm	1824g (4.02 lbs)	•	•	•	•	•	•	•	•	•	•	•	•	•	•	•	•	•	•	•	•	
			110 - 150mm or 100 - 140mm	2074g (4.57 lbs)	•	•	•	•	•	•	•	•	•	•	•	•	•	•	•	•	•	•	•	•	•
			130/140/150mm	2101g (4.63 lbs)	•	•	•	•	•	•	•	•	•	•	•	•	•	•	•	•	•	•	•	•	•
	R	TR	130/140/150mm	1788g (3.94 lbs)	•	•	•	•	•	•	•	•	•	•	•	•	•	•	•	•	•	•	•	•	
			110 - 150mm or 100 - 140mm	1979g (4.36 lbs)	•	•	•	•	•	•	•	•	•	•	•	•	•	•	•	•	•	•	•	•	•
			130/140/150mm	1969g (4.34 lbs)	•	•	•	•	•	•	•	•	•	•	•	•	•	•	•	•	•	•	•	•	•

\*Weight based on 265mm 1 1/8" steel steerer, 9mm axle / Maximum recommended rotor size: 210mm

COLORS:  
BLACK, DIFFUSION  
BLACK, WHITE,  
SRAM X9 AND X7  
COLOR-MATCH  
DECALS  
AVAILABLE

FEATURING:  
POWER BULGE  
AIR GUIDES  
TRAVEL GRADIENTS  
MAXLE LITE





# TORA

302  
RRP: **\$349.95**



### TORA

#### THIS TORA DOESN'T FOOL AROUND.

The Tora Trail brings a worthy 85-130mm Coil U-Turn along with 120mm and 130mm Solo Air spring options to this all-around trail fork already stacked with sturdy 32mm steel upper tubes, external rebound adjust and the efficient TurnKey lockout. High-end features, a plush ride and a stiff chassis in a real-world package.

- Available colors: ● ● ● ●



RECOMMENDED REAR SHOCK: ARIO AND BAR

PLATFORM	MODEL	INTENDED USE	TRAVEL	WEIGHT	TURNKEY	SOLO AIR	COIL U-TURN	EXTERNAL REBOUND	LOCKOUT	SPRING VIA AIR PRESSURE	EXTERNAL TRAVEL	STEEL 1 1/8"	ALUMINUM 1 1/8"	FORGED 6061 T-6 HOLLOW ALUMINUM	32MM STEEL CHROME	MAGNESIUM IS DISC MOUNT	PUSHLOC POPLOC REMOTE	OPTIONS
TORA TRAIL	302	TR	120/130mm	2340g (5.15 lbs)	•	•	•	•	•	•	•	•	•	•	•	•	•	
			85 - 130mm	2400g (5.3 lbs)	•	•	•	•	•	•	•	•	•	•	•	•	•	•
	289	TR	85 - 130mm	2360g (5.2 lbs)		•	•			•	•	•	•	•	•	•		

\*Weight based on 265mm 1 1/8" steel steerer, 9mm QR / Maximum recommended rotor size: 210mm

COLORS:  
BLACK,  
WHITE,  
DIFFUSION BLACK,  
DIFFUSION SILVER

FEATURING:  
AIR GUIDES

[56]

638,723  
2,196,089  
2,472,841  
3,199,638  
3,208,767  
3,232,390  
3,301,575  
3,459,441  
3,810,659  
3,891,236  
4,367,882  
4,392,664  
4,964,765  
4,057,264  
4,145,067  
4,367,882  
4,392,664  
4,502,672  
4,515,384  
4,553,769  
4,573,697



monarch

RRP: \$399.95



MONARCH RT3



MONARCH RT



MONARCH R

**MONARCH**  
TRACTION LIKE YOU NEVER FELT BEFORE.

Featuring silky smooth travel in a new lightweight design, Monarch floats through bumps even better than before, turning rugged trails into tire-gripping velvet. The chassis is lean while maintaining the durability and adjustability needed to bite off huge chunks of burly trail action and epic cross country. Combining a redesigned Solo Air spring with updated damping controls, Monarch has the perfect balance of bump performance and efficiency.

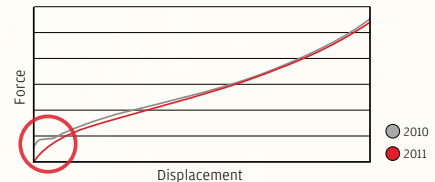
**Updates for Model Year 2011**

- Updated Solo Air spring with reduced breakaway and lower friction.
- Updated adjusters.
- Updated tuning options.

**Small-Bump Improvements Quantified**

MONARCH AIR SPRING CURVES / 2010 vs. 2011

For 2011, initiation forces have decreased for improved small bump sensitivity and better response.

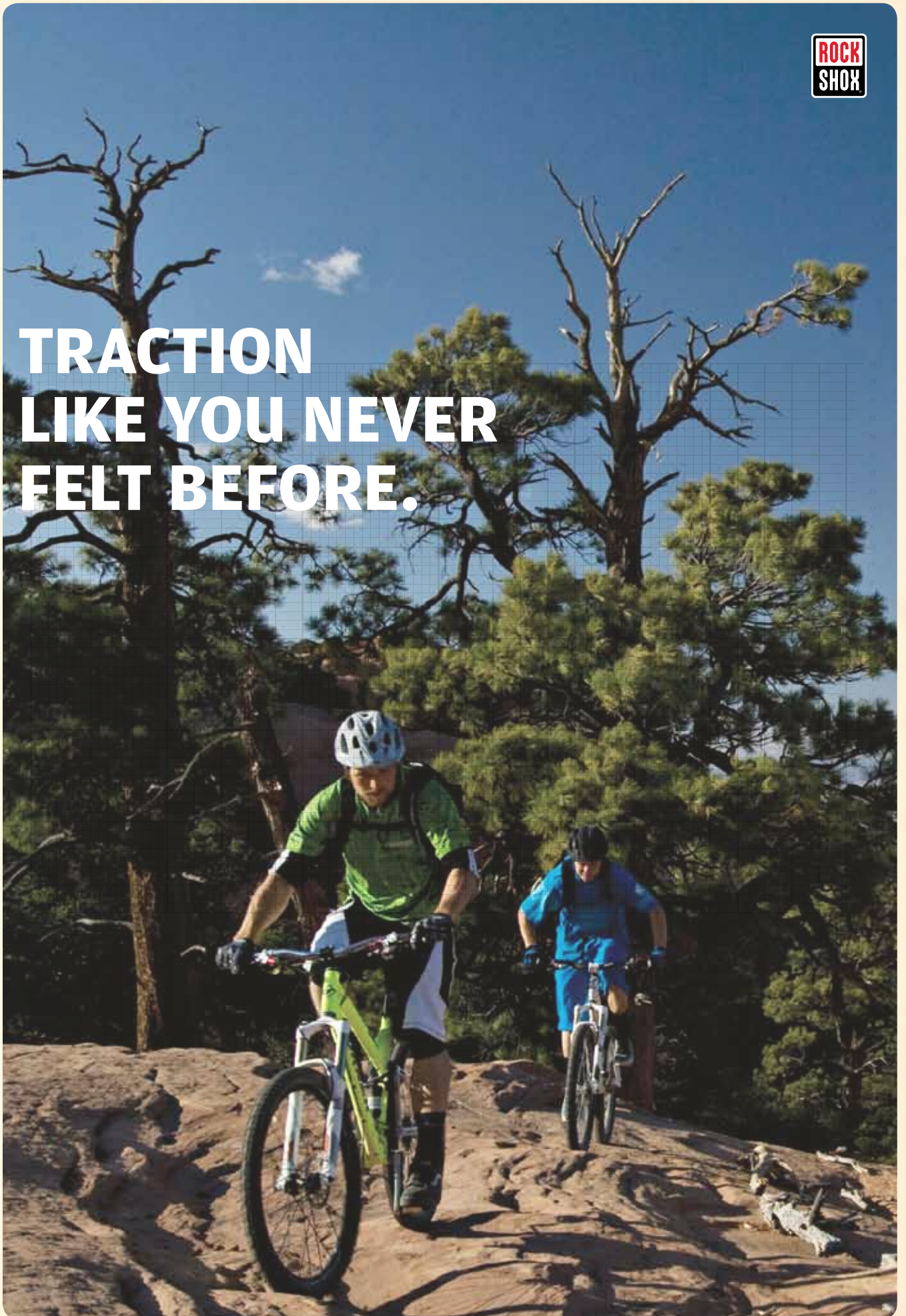


\*Based on 165 x 38mm shock size w/standard air can

PLATFORM	MODEL	INTENDED USE	WEIGHT	HYDRAULIC WITH IFFP	DUAL FLOW	SOLO AIR	EXTERNAL REBOUND	ELUORATE	3 POSITION FLOODETE	SPRING VIA AIR PRESSURE	28MM HARD ANODIZED ALUMINUM	OPTIONAL HIGH VOLUME CAN - AVAILABLE	9MM TP-25 ALUMINUM SHAFT
MONARCH	RT3	XC, TR, AM	215g (.47 lb)	•	•	•	•	•	•	•	•	•	•
	RT	XC, TR, AM	210g (.46 lb)	•	•	•	•	•	•	•	•	•	•
	R	XC, TR, AM	210g (.46 lb)	•	•	•	•	•	•	•	•	•	•
*Weight based on 168 x 38mm eye to eye with no mounting hardware / Available Configurations: 152 x 31mm (6.0 x 1.25"), 165 x 38mm (6.5 x 1.5"), 190 x 50mm (7.5 x 2.0"), 200 x 50 or 57mm (7.875 x 2.0 or 2.25"), 216 x 63mm (8.5 x 2.5"), 222 x 66mm (8.75 x 2.6")													



**TRACTION  
LIKE YOU NEVER  
FELT BEFORE.**









# CROSS COUNTRY



XX/WC  
RRP: \$1599.95

XX  
RRP: \$1199.95

RLTTi  
RRP: \$1199.95

RLT  
RRP: \$999.95



**SID**

**LIFE IS TOO SHORT TO COME IN SECOND.**

SID's supremely svelte design puts hill-charging, race-winning lightweight suspension in a stiff 32mm chassis that doesn't flinch when the trail gets tough. Combining the uber-light Dual Air spring with BlackBox Motion Control and the PowerBulge design of the lower legs, SID delivers unparalleled plushness and control in the world of lightweight suspension. Now offered in a brand-spanking new 120mm travel option, with 15mm Maxle Lite option and a lighter 80-100mm chassis. At a slim 1345g for the SID World Cup, you might hear people call you a weight weenie—that is, if they weren't so far behind you.

**New for Model Year 2011**

- 2 chassis options: 120mm and 80/100mm travel.
- 15mm Maxle Lite option.
- Tapered steerer offered in all models.
- New Keronite® Grey finish option on World Cup Models saves up to 20 grams.
- New graphics.
- Dual Flow rebound now featured on all models.
- Tapered carbon-fiber crown steerer saves 100 grams.
- New disc brake hose guide.
- New lightweight bushing system.
- Available colors: ● ○ ●



PLATFORM	MODEL	INTENDED USE	TRAVEL	WEIGHT (* INCLUDES REMOTE)	XX MOTION CONTROL	BLACKBOX MOTION CONTROL	MOTION CONTROL	DUAL FL FLOW REBOUND	DUAL AIR	EXTERNAL BEGINNING-STROKE REBOUND	EXTERNAL 4 REBOUND	LOW-SPEED COMPRESSION	EXTERNAL F FLOUIDATE AND LOCKOUT	SPRING VIA AIR PRESSURE	ALUMINUM TAPERED	100 LOW 1 PIECE CROWN STEERER	32MM 700 SERIES STRAIGHT WALL DISC BRAKE	MAGNESIUM POST-MOUNT	OPTIONAL 15MM MAXXALITE FOR 120MM MODEL	WITH OPTIONAL BRAKE BOSS LOWER 80/100MM ONLY	XLOC	PUSHLOC P. PDP/OC OPTION
<b>SID</b>  COLORS: BLACK, WHITE, WORLD CUP, KERONITE® GREY FINISH OPTION  FEATURING: POWER BULGE AIR GUIDES SAG GRADIENTS	XX World Cup	XC, TR	80/100mm or 120mm	1395g (3.08 lbs)* 1415g (3.11 lbs)*	•		•	•	•	•	•	•	•	•	•	•	•	•	•	•	•	•
	World Cup	XC, TR	80/100mm or 120mm	1345g (2.97 lbs) 1365g (3.00 lbs)		•	•	•	•	•	•	•	•	•	•	•	•	•	•	•	•	•
	XX	XC, TR	80/100mm or 120mm	1495g (3.29 lbs)* 1515g (3.34 lbs)*	•		•	•	•	•	•	•	•	•	•	•	•	•	•	•	•	•
	RLT Ti	XC, TR	80/100mm or 120mm	1470g (3.24 lbs) 1490g (3.28 lbs)		•	•	•	•	•	•	•	•	•	•	•	•	•	•	•	•	•
	RLT	XC, TR	80/100mm or 120mm	1460g (3.22 lbs) 1484g (3.27 lbs)		•	•	•	•	•	•	•	•	•	•	•	•	•	•	•	•	•

\*Weight based on 265mm 1 1/8" steerer, except World Cup models / Maximum recommended rotor size: 185mm



**REBA**

XX29" RRP: \$1199.95

RLT Ti/29" RRP: \$1099.95

RLT RRP: \$749.95

RLT 29" RRP: \$799.95



**REBA**

**RIDE IT ALL. THEN RIDE IT AGAIN.**

Offering XX Motion Control, BlackBox Motion Control, Air U-Turn and 29" options, the Reba is the chameleon of forks; it can be a short-travel climbing machine or 29er's stiff and reliable dream, with plenty of options in between. Reba combines a potent blend of well-rounded performance, a lightweight design and unparalleled tunability on top of a stiff 32mm chassis. This is a relentless trail warrior all the way from the calf-burning climbs to the grin-inducing descents.

**New for Model Year 2011**

- New 140/130mm 29" Trail model available with tapered aluminum steerer and 20mm Maxle lite only.
- Updated detented compression adjuster for RLT models.
- New lighter and stiffer Maxle Lite.
- New graphics.
- Available colors: ● ○



RECOMMENDED REAR SHOCK: MONARCH AND ARIO

PLATFORM	MODEL	INTENDED USE	TRAVEL	WEIGHT ("INCLUDES REMOTE)	DAMPING SYSTEM				SPRING				ADJUSTMENTS				STEERER	CROWN	UPPER TUBES	LOWERS	REMOTE		
					XX MOTION CONTROL	BLACKBOX MOTION CONTROL	MOTION CONTROL	DUAL FLOW REBOUND	DUAL AIR	AIR U-TURN	EXTERNAL REBOUND-STRIKE REBOUND	EXTERNAL REBOUND	LOW-SPEED COMPRESSOR	EXTERNAL FLOWRATE AND LOCK-ROB	TUNED FLOWRATE AND EXTERNAL LOCK-OUT	SPRING VIA AIR PRESSURE						EXTERNAL TRAVEL	
REBA  COLORS: BLACK, WHITE FEATURING: POWER BULGE AIR GUIDES TRAVEL GRADIENTS	XX 29"	XC, TR	80/100/120mm	1718g (3.79 lbs)*	•		•	•	•	•	•	•	•	•	•	•	•	•	•	•			
	RLT Ti	XC, TR	80/100/120mm	1620g (3.57 lbs)		•	•	•	•	•	•	•	•	•	•	•	•	•	•	•	•		
			90 - 120mm	1702g (3.75 lbs)		•	•	•	•	•	•	•	•	•	•	•	•	•	•	•	•	•	
	RLT Ti 29"	XC, TR	80/100/120mm	1698g (3.74 lbs)		•	•	•	•	•	•	•	•	•	•	•	•	•	•	•	•	•	
			90 - 120mm	1780g (3.92 lbs)		•	•	•	•	•	•	•	•	•	•	•	•	•	•	•	•	•	
			130/140mm	1869g (4.1 lbs)		•	•	•	•	•	•	•	•	•	TAPERED ONLY	•	•	•	•	20MM ONLY	•	•	
	RLT	XC, TR	80/100/120mm	1625g (3.58 lbs)		•	•	•	•	•	•	•	•	•	•	•	•	•	•	•	•	•	
			90 - 120mm	1707g (3.76 lbs)		•	•	•	•	•	•	•	•	•	•	•	•	•	•	•	•	•	•
	RLT 29"	XC, TR	80/100/120mm	1698g (3.74 lbs)		•	•	•	•	•	•	•	•	•	•	•	•	•	•	•	•	•	
			90 - 120mm	1780g (3.92 lbs)		•	•	•	•	•	•	•	•	•	•	•	•	•	•	•	•	•	•
			130/140mm	1869g (4.1 lbs)		•	•	•	•	•	•	•	•	•	TAPERED ONLY	•	•	•	•	20MM ONLY	•	•	
	RL	XC, TR	80/100/120mm	1625g (3.58 lbs)		•	•	•	•	•	•	•	•	•	•	•	•	•	•	•	•	•	
			90 - 120mm	1707g (3.76 lbs)		•	•	•	•	•	•	•	•	•	•	•	•	•	•	•	•	•	•
	RL 29"	XC, TR	80/100/120mm	1698g (3.74 lbs)		•	•	•	•	•	•	•	•	•	•	•	•	•	•	•	•	•	
			90 - 120mm	1780g (3.92 lbs)		•	•	•	•	•	•	•	•	•	•	•	•	•	•	•	•	•	•
			130/140mm	1869g (4.1 lbs)		•	•	•	•	•	•	•	•	•	TAPERED ONLY	•	•	•	•	20MM ONLY	•	•	

\*Weight based on 265mm 1 1/8" steerer, 9mm axle / Maximum recommended rotor size: 210mm



**29"**  
Let's face it. You know what you want from your suspension, which is why we believe in giving our riders the options they desire. You'll find that several of our forks are available in 29-inch models for riders who have a penchant for bigger wheels.



Reba



Recon Gold



Recon Silver



Tora



Dart



# RECON

GOLD

RL  
RRP: \$649.95

TK  
RRP: \$599.95

TK29"  
RRP: \$549.95



### RECON GOLD

#### SET THE PACE WITH THE LIGHTWEIGHT RECON.

With up to 120mm of travel and a 29" option, this lightweight suspension package contains all the features you need to challenge the trail ahead. A stiff aluminum crown married to lightweight 32mm aluminum upper tubes make the Recon Gold a singletrack force to be reckoned with.

#### New for Model Year 2011

- Tapered steerer offered on all models.
- New graphics.
- 29" option.
- Available colors:



RECOMMENDED REAR SHOCK: MONARCH AND ARIO

PLATFORM	MODEL	INTENDED USE	TRAVEL	WEIGHT	MOTION CONTROL	TURNOVER	SOLD AIR	COIL	EXTERNAL REBOUND	LOW-SPEED COMPRESSION	LOCKOUT	SPRING VIA AIR PRESSURE	SPRING VIA PRELOAD	4130 STEEL, 1 1/8"	ALUMINUM 1 1/8", 1.5" TO 1 1/2"	TAPERED - AVAILABLE	FORGED 6061 T-6 HOLLOW ALUMINUM	FORGED, AL 6061 ALUMINUM	32MM, 7000 SERIES STRAIGHT-WALL ALUMINUM, LOW-FRICTION ANODIZED	MAGNESIUM, POST-DISC MOUNT	REMOTE	OPTIONS	
RECON GOLD	RL	XC	80/100/120mm	1805g (3.98 lbs)	•	•	•	•	•	•	•	•	•	•	•	•	•	•	•	•	•	•	
			80/100/120mm	1964g (4.33 lbs)	•	•	•	•	•	•	•	•	•	•	•	•	•	•	•	•	•	•	•
	TK	XC	80/100/120mm	1776g (3.92 lbs)	•	•	•	•	•	•	•	•	•	•	•	•	•	•	•	•	•	•	•
			80/100/120mm	1935g (4.26 lbs)	•	•	•	•	•	•	•	•	•	•	•	•	•	•	•	•	•	•	•
	TK 29"	XC	80/100mm	1755g (3.87 lbs)	•	•	•	•	•	•	•	•	•	•	•	•	•	•	•	•	•	•	•
R	XC	80/100/120mm	1755g (3.87 lbs)	•	•	•	•	•	•	•	•	•	•	•	•	•	•	•	•	•	•	•	
		80/100/120mm	1997g (4.40 lbs)	•	•	•	•	•	•	•	•	•	•	•	•	•	•	•	•	•	•	•	•

\*Weight based on 265mm 1 1/8" steel steerer, 9mm QR / Maximum recommended rotor size: 210mm

638,723  
2,196,089  
2,472,841  
3,199,638  
3,208,767  
3,232,390  
3,301,575  
3,459,441  
3,810,659  
3,891,236  
3,912,054  
3,964,765  
4,057,264  
4,145,067  
4,367,882  
4,392,664  
4,502,672  
4,515,384  
4,553,769  
4,573,697



# RECON

SILVER

TK  
RRP: \$469.95

R  
RRP: \$319.95



### RECON SILVER

#### PREMIUM PERFORMANCE PACKAGED FOR THE PEOPLE.

Unmatched in its class for stiffness, performance and value, the Recon Silver makes high-end features accessible to everyday riders. Incorporating external rebound adjustment and the control that comes with 32mm upper tubes, the Recon Silver will take your riding to new places.

#### New for Model Year 2011

- Tapered steerer offered in all models.
- New graphics.
- 29" option.
- Available colors:



RECOMMENDED REAR SHOCK: MONARCH AND ARIO

PLATFORM	MODEL	INTENDED USE	TRAVEL	WEIGHT	TURNEY	SOLO AIR	COIL	EXTERNAL REBOUND LOCKOUT	SPRING VIA AIR PRESSURE	SPRING VIA PRELOAD	4130 STEEL 1 1/8"	ALUMINUM 1 1/8" TAPERED - AVAILABLE	FORGED 808T T-8 HOLLOW ALUMINUM	FORGED 808T T-8 HOLLOW ALUMINUM W/46MM OFFSET	32MM 4130 TAPERED-WALL STEEL CHROME	MAGNESIUM POST-DISC MOUNT	20MM MAX-LITE OPTION	REMOTE	OPTIONS
RECON SILVER	TK	XC	80/100/120mm	2069g (4.56 lbs)	•	•	•	•	•	•	•	•	•	•	•	•	•	•	•
			80/100/120mm	2228g (4.91 lbs)	•	•	•	•	•	•	•	•	•	•	•	•	•	•	•
	TK 29*	XC	80/100mm	2186g (4.82 lbs)	•	•	•	•	•	•	•	•	•	•	•	•	•	•	•
	R	XC	80/100/120mm	2009g (4.43 lbs)	•	•	•	•	•	•	•	•	•	•	•	•	•	•	•
80/100/120mm			2168g (4.78 lbs)	•	•	•	•	•	•	•	•	•	•	•	•	•	•	•	•

COLORS:  
WHITE, BLACK,  
SILVER,  
DIFFUSION BLACK,  
DIFFUSION SILVER

FEATURING:  
POWER BULGE  
AIR GUIDES

\*Weight based on 265mm 1 1/8" steel steerer, 9mm QR / Maximum recommended rotor size: 210mm





# TORA

TK  
RRP: **\$259.95**



### TORA

#### FAST AND STRONG, THE TOOL FOR THE TRAILS.

The Tora brings a trail-worthy 120mm coil spring and 29" option to a versatile fork already stacked with sturdy 32mm steel upper tubes, external rebound adjust and efficient damping systems. High-end features, a plush ride and a stiff chassis in a real-world package.

#### New for Model Year 2011

- 2 steerer options for 26" model.
- New graphics.
- 4-piece bushing system.
- Pocketed aluminum crown.
- 29" option.
- Available colors:



RECOMMENDED REAR SHOCK: ARIO OR BAR

PLATFORM	MODEL	INTENDED USE	TRAVEL	WEIGHT	TURNKEY	COIL	DAMPING SYSTEM	SPRING	ADJUSTMENTS	STEERER	CROWN	UPPER TUBES	LOWERS	OPTIONS
TORA XC	TK	XC	80/100/120mm	2200g (4.85 lbs)	•	•	•	EXTERNAL REBOUND LOCKOUT	SPRING VIA PRELOAD	420 STEEL 1 1/8" STANDARD ALUMINUM 1 1/8" OPTIONAL	ALUMINUM 1 1/8" STANDARD FORGED 8061 T-6 ALUMINUM 40MM OFFSET FOR 29" PLATFORM	32MM STAINLESS-STEEL WALL STEEL CHROME	MAGNESIUM POST-DISC MOUNT	REAR FENDER
	TK 29"	XC	80/100mm	2352g (5.19 lbs)	•	•	•	•	•	•	•	•	•	•

\*Weight based on 265mm 1 1/8" steel steerer, 9mm QR / Maximum recommended rotor size: 210mm

COLORS:  
BLACK, WHITE,  
SILVER, DIFFUSION  
BLACK, DIFFUSION  
SILVER

FEATURING:  
POWER BULGE  
AIR GUIDES



# Dart

XC  
RRP: \$199.95



**DART**  
**CAPABILITY TO TACKLE THE TRAIL AHEAD.**

The Dart is the best value in its class. Offering top-notch options like TurnKey lockout and rebound controls and PushLoc / PopLoc compatibility, this fork will turn your backyard trail into your favorite new place to hang out.

**New for Model Year 2011**

- New graphics.
- 29" option.
- Available colors:



RECOMMENDED REAR SHOCK: BAR

PLATFORM	MODEL	INTENDED USE	TRAVEL	WEIGHT	TURKEY	COLL	DAMPING SYSTEM	SPRING	ADJUSTMENTS	STEERER	CROWN	UPPER TUBES	LOWERS	OPTIONS
<b>DART</b>	3: 29"	XC	80/100mm	2263g (4.99 lbs)	•	•	•	•	•	•	•	•	•	•
	3	XC	80/100/120mm	2223g (4.9 lbs)	•	•	•	•	•	•	•	•	•	•
	2 TK	XC	80/100/120mm	2472g (5.45 lbs)	•	•	•	•	•	•	•	•	•	•
	2	XC	80/100/120mm	2223g (4.9 lbs)	•	•	•	•	•	•	•	•	•	•
	1	XC	80/100mm	2495g (5.5 lbs)	•	•	•	•	•	•	•	•	•	•

COLORS:  
 BLACK  
 DIFFUSION BLACK  
 DIFFUSION SILVER  
 WHITE

\*Weight based on 265mm 1 1/8" steel steerer / Maximum recommended rotor size: 160mm



# ARIO



ARIO RL

RRP: **\$349.95**



ARIO R



ARIO RLR

RRP: **\$399.95**

**ARIO**

**ULTIMATE EFFICIENCY FOR CROSS COUNTRY AND TRAIL.**

Featuring a rock-solid lockout and a remote option, Ario offers a simple and light air spring design with the efficiency and responsiveness to keep you turning the pedals all day long.

**Updates for Model Year 2011**

- Graphics.

PLATFORM	MODEL		INTENDED USE	WEIGHT	HYDRAULIC WITH ITP	SOLD AIR	EXTERNAL REBOUND	REMOTE LOCKOUT	LOCKOUT	SPRING VIA AIR PRESSURE	20MM HARD ANODIZED ALUMINUM BODY	9MM ALUMINUM SHAFT	WORKS WITH PLUS/DC OR P-LOC REMOTES	NOTES
ARIO	RLR	XC, TR	210g (.46 lb)	•	•	•	•	•	•	•	•	•	•	
	RL	XC, TR	210g (.46 lb)	•	•	•	•	•	•	•	•	•	•	
	R	XC, TR	205g (.45 lb)	•	•	•				•	•	•		

\*Weight based on 165mm eye to eye with no mounting hardware / Available Configurations: 152 x 31mm (6.0 x 1.25"), 165 x 38mm (6.5 x 1.5"), 184 x 44mm (7.25 x 1.75"), 190 x 50mm (7.5 x 2.0"), 200 x 50 or 57mm (7.875 x 2.0 or 2.25"), 216 x 63mm (8.5 x 2.5")



# bar



BAR R

**BAR**  
**THE VALUE LEADER.**

Combining a Solo Air spring with a large positive air chamber gives the Bar a quality feel on cross country rides.

**Updates for Model Year 2011**

- Graphics.

PLATFORM				SPRING	ADJUSTMENTS	CHASSIS
	MODEL	INTENDED USE	WEIGHT	SOLO AIR	EXTERNAL REBOUND	SPRING VIA AIR PRESSURE
					25MM FORGED BOP 1 ALUMINUM BODY	10MM CHROMOLY STEEL SHAFT
<b>BAR</b>	R	XC, TR	260g (.57 lb)	•	•	•

\*Weight based on 165mm eye to eye with no mounting hardware / Available Configurations: 165 x 38mm (6.5 x 1.5"), 190 x 50mm (7.5 x 2.0"), 200 x 50mm (7.875 x 2.0")

