





SOMERVILLE
MA 02143
USA

2009

I N D E P E N D E N T F A B R I C A T I O N

Welcome.

The spirit of independence that led Lloyd and a group of other passionate frame-builders who'd lost their jobs when the famed Fat City Cycles closed it's doors, to establish their own company 14 years ago is alive and well in 2009.

Today, Independent Fabrication is proud to remain a small American company focused on serving the unique needs of each customer, one at a time. Combining old world craftsmanship with state of the art materials and process, we take pride in building products that transcend pure utility and establish an emotional connection with their owners.

We recognize that true leaders rarely follow the pack; they are by definition individualists. If you are a rider that eschews trends and marketing hype, and value precise fit, ride tuning, aesthetic distinction, and fine American craftsmanship, then you have found your guides.

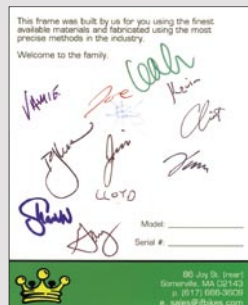
The IF journey starts with your aspirations. Together with your authorized IF dealer, we'll work with you to understand what you desire in your next dream bike. Whether it is your first custom build, or yet another in an ample stable, our aim is to exceed your expectations for fit, finish, ride quality, and most important, your interaction with us.

When you are ready to begin the journey, give us a call, or locate your nearest authorized IF dealer (see our dealer locator online at www.ifbikes.com).

So welcome, come on in and enjoy the fruits of our labor.



2009





Fine furniture meets sculpted metal. Working with our carbon fiber technology partners, Edge Composites of Ogden, Utah, we set out to add the visual interest of Mother Nature's composite, wood, to the polished luster of titanium. Edge was able to laminate cherry veneer to their outstanding carbon fiber tubing to create this one of a kind beauty.



The XS. The ultimate blend.

Like peanut butter and chocolate, Lennon and McCartney, tequila and lime; all proof that 1+1 can in fact equal 3, the combination of carbon fiber and titanium results in performance that exceeds the sum of its parts. Applying each of these materials to their fullest potential, combined with the classic styling of lugs and state of the art fabrication, yields a ride that is uncompromised on any dimension. With growing palmarès that include a Masters time trial World Championship, back to back awards as Bicycling magazine's "Best Dream Road Bike", and in track configuration, "Best Track Bike" at the 2007 North American Handmade Bicycle Show, the 2009 XS continues to be refined with a new custom carbon rear mono-stay and advanced tubing options from Edge Composites.

CROWN  JEWEL, TI



**The Titanium Crown Jewel.
Light, fast, and strong.**

With each introduction of a new material to bicycle construction, it's easy to overlook those that came before. Titanium, considered a state of the art material in the 90's for its lightweight strength and corrosion resistance, has, in the minds of some, been surpassed by carbon fiber. From a frame-builder's perspective, titanium, like other metals, remains an incredibly versatile and relevant material choice today. The sheer amount and variety of tubing that we have at our disposal creates the opportunity for us to thoroughly dial in all aspects of ride quality and fit requirements for you, the rider. The Ti Crown Jewel combines the proven design of our signature steel Crown Jewel with the responsive ride of titanium to create a light, fast and strong frame. Our unique shot peen surface treatment also boosts the fatigue life of the frame by twofold.



Many of our customers choose the beauty and maintenance free finish of our shotpeened titanium in its unpainted form. For this bike, the rider wanted something “girly, but not too girly”. Our paint department chose Pale Pink Pearl, and produced a unique logo and design treatment by masking the pink base coat prior to applying the pearl top-coat. From a distance the bike appears to be solid pink, but upon closer inspection, the Independent Fabrication logos and fanciful graphic elements appear out of the paint as the multiple layers reflect light differentially. Make sure that you look closely as this not-too-girly bike passes you.

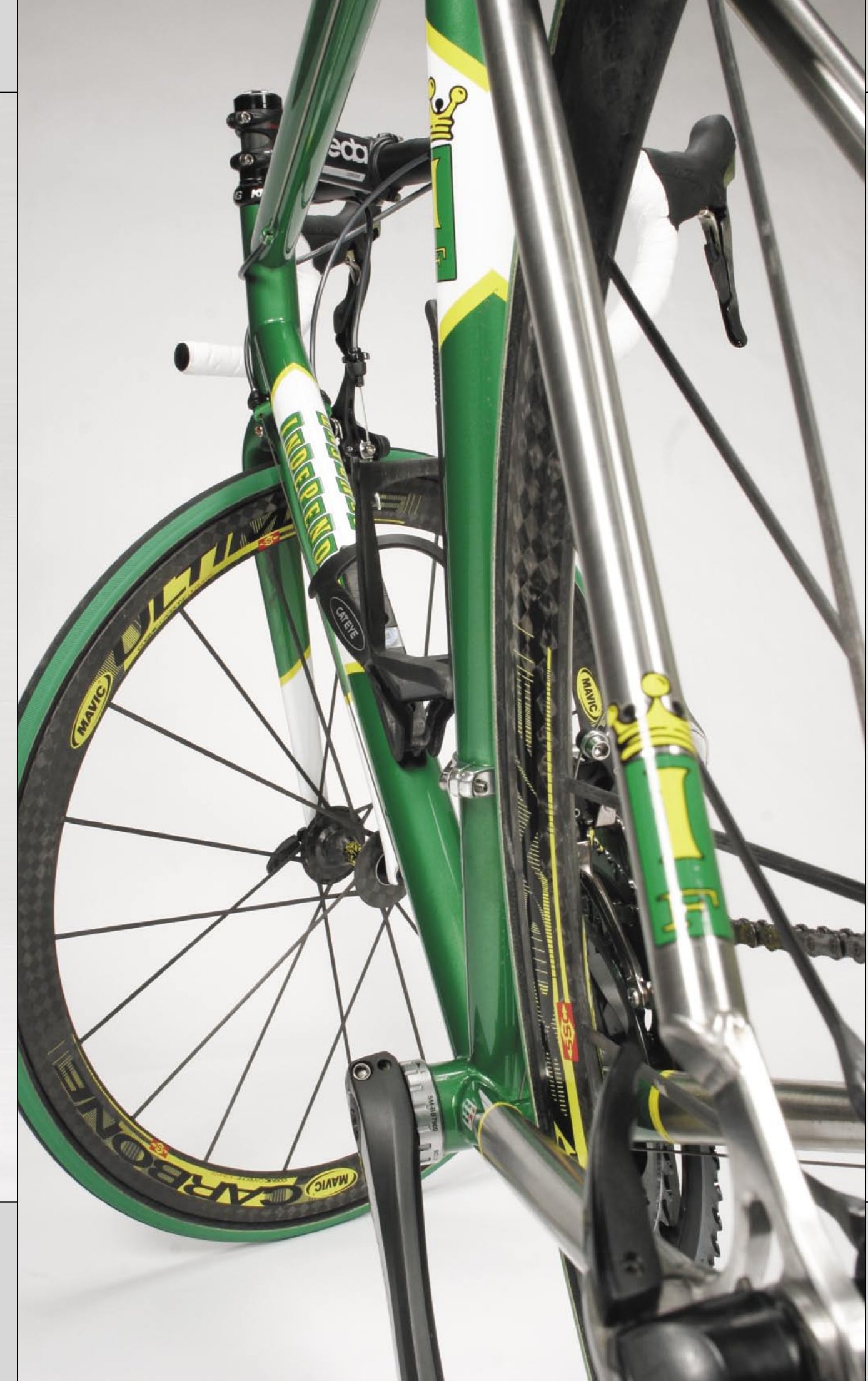


This is Kevin, aka Sparky. Underneath the friendly face is an ultra-competitive racer, who has been competing on bikes since, well, his diaper served as a chamois. After graduating with honors from Dartmouth, he decided that the best application for his Ivy League education was designing the bikes that he used to drool over as a kid. For the record, he still drools, especially when he first saw his new SSR in 2009 IF Team livery... good thing the bike is stainless.



The SSR. A new era in steel technology.

The SSR is the pinnacle of the modern steel bicycle. The SSR is made out of Reynolds 953, an extraordinarily strong stainless steel alloy with roots in military science. This super steel has an ultimate yield strength of 2000 MPA, allowing for thin-walled, over-sized tubing, that when expertly welded at IF, makes a race bike like no other. Stiff enough for the sprinter in you, light enough for the climber, and strong enough to last a lifetime with the corrosion resistance of stainless. All with the undeniably lively ride qualities of a steel bike.



Frame and fork painted with the new IF Racing Team paint scheme, Quetzal Green and White.

FACTORY  lightweight



Inspired by a late 60's limited edition Dodge Charger Super Bee, this paint scheme challenged IF's paint department to apply contrasting gloss and matt finishes. Devoid of all markings, except for the sterling silver head badge and signature IF crown on the seat tube, this is one sweet looking street racer. Are you ready to rumble?

Frame and fork painted Corsa Red and custom Matte Black.



The Factory Lightweight. An exercise in maxi-minimalism.

Like the muscle cars of the late 60's, or the modern Porsche 911 GT3, the Factory Lightweight is all about minimizing superfluous options and maximizing performance. We use modern wonder materials like carbon fiber and titanium in our other models, yet this steel frame set tips the scales as our lightest. It is built out of a special house blend of tubes from the most innovative tube manufacturers in the business. The tubing is so thin that we purge the inside of the frame during welding through a series of drilled holes to assure the highest quality welds.



The Crown Jewel.
The benchmark.

The ride quality of steel is the benchmark against which all other materials are gauged. The Crown Jewel may be the least expensive road frame set that we offer, but as its name implies, it is the pride of our range. We use a blend of Reynolds 853 and True Temper OX Platinum that we have drawn and butted to our specifications. We fully seal the top tube, down tube, seat stays and chain stays to keep water out and increase the longevity of the frame. For additional security, we coat the inside of the seat tube with a rust inhibitor to deal with any water that finds its way in through the seat post.

The wide range of tubing available to us, and the versatility of the Crown Jewel design platform make it the most highly customizable model in our range. Fixed gear, track, road... whatever your needs, the Crown Jewel can do it. The Crown Jewel comes as full steel frame and fork. The Crown Jewel SE comes with a carbon fork and sterling silver head badge.

Bang for the buck. As shown, this CJ configuration represents what we consider to be the finest example of the performance value equation available today. For about \$4K, you can get a complete custom steel bike that oozes classic good looks and provides plenty of performance to keep you at the front of your personal peloton. The 2009 SRAM Rival group and Mavic Ksyrium Elite wheel-set used here are stellar examples of trickle down technology, taking gains from their more upscale siblings. With this much performance stuffed into this little money, there is no reason to pedal astride something that anyone else has. Crown yourself king.



Frame and fork painted
Archie Bunker Brown.

d e l u x e t i

Harlan Price, IF's only pro racer, is pictured with his well seasoned Titanium Deluxe 29'er Lefty.

We asked Harlan if we could build him a newer, better dream bike than the one he has now and this is what he said: "I already have my dream bike, I don't need another one."

Check out his blog (boxedbee.blogspot.com) for what he's up to now.



d e l u x e

IF Elite racer Tiffany Mann and her daughter CoCo are pictured with Tiffany's new 26 inch fully rigid Steel Deluxe singlespeed.

She took a little time off of racing, for obvious reasons, but never stopped riding and can be seen rolling around Somerville with CoCo on her cruiser.



The Deluxe. Where it all began.

The Deluxe (in titanium at left, or in steel above) is where it all began for IF. The founders of IF learned their craft building mountain bikes, and Lloyd remains a devoted rider, racer and advocate to this day. After many years of refinement and experience, the Deluxe has evolved into a versatile platform that can be designed in a dizzying number of configurations. 26" or 29" wheels, or how about one of each? Singlespeed or geared? Fully rigid or suspension fork? V-brakes or discs? Eccentric Bottom Bracket (EBB) or slider drop outs? Each Deluxe is built as a dedicated frame set, designed specifically for the build height and offset of a specific fork (rigid or suspension), guaranteeing ideal handling characteristics.

The steel Deluxe is endowed with a robust tubeset designed to take the abuse of life on the trail. The tubeset is a combination of Reynolds 853 and True Temper OX Platinum. We have the tubing custom drawn in a plethora of wall thicknesses, diameters, and butt lengths.

The titanium Deluxe is made out of an oversized 3Al/2.5V titanium tubeset. This tubing is cut and butted into a wide range of dimensions. The finished frame is shotpeened and then either decaled or painted. The titanium deluxe comes with a sterling silver headbadge.

TITANIUM
PLANET X



PLANET X

The Planet Cross. A thoroughbred racer.

The Planet Cross is a full-on cyclocross racing machine. Designated the “Best Core Crosser” by Velonews magazine in 2008, it has geometry and features that are specific to the brutal races that it competes in. It has added chainstay clearance for rapid evacuation of mud, a tall bottom bracket for clearing obstacles, ample room in the mainframe for portaging, and a front end optimized for razor sharp handling.

Whether you aim for the podium, or just enjoy the weekend race and beer tent, the Planet Cross can be tailored to your needs. Available in either titanium (left) or steel (right), and with either an IF custom steel fork (right) or Alpha Q carbon cross fork (left), you can count on us to build you your own core crosser.

IF framebuilder Leah is pictured with her trusty steeds: her Ti Planet Cross with a green Bubble Fade paint job and her pony with pink fur. She only races the bike.



Sophisticated business people call it “co-branding”, or “cross-selling”; we just call it hooking up with good people that share our passion for cycling. The good folks at Rapha, who make some of the best cycling clothing and accessories out there (www.rapha.cc), asked us if we wanted to collaborate on a cyclocross collection. We said, “hell yeah!”. They did the kit, and we did the bike that you see here. Available as a limited edition, with a custom Rapha silver head badge and a fresh, yet classic, panel paint scheme that matches the kit. Go ahead, get it muddy.



The Club Racer. Versatile Performance.

Versatility, or split personality, you decide. This frameset incorporates traditional road bike geometry, coupled with all of the options for light touring. It is designed for use with long reach caliper brakes to accommodate fenders and slightly larger tires. It also includes front and rear rack mounts and a pump peg. The Club Racer makes an excellent commuter bike, rainy day trainer, light touring rig, or gravel road explorer, but when it comes time to pick up the pace, you can strip it down and still stake your place at the front of the pack. It is available in steel or titanium and with or without S&S couplings.

Painted Midnight Blue Metallic with White panels and silver pinstripes (above).

Alternative energy: you.

Folks like Jamie have been commuting by bike since before it was a matter of national security and a global ecological imperative. So, to be sure that we offered you the opportunity to do your bit to add to good planetary karma, we asked him to design his latest version of the ultimate IF commuter. What you see here is the proven DNA of our steel road frames, modified to be a dedicated all-weather commuter. Featuring a trick Shlumpf planetary gear drive-train, disc brakes, rack mounts, slider drop-outs and a custom, waterproof rack bag from the good folks at BaileyWorks (www.baileyworks.com), this carbon free machine will get you and your stuff where you need to be, and make you feel good about it. Sorry Kermit, it is easy to be green, or whatever custom color you desire...

This one is painted Gloss Black with painted in graphics.





This Independence was custom built for a Canadian customer... big country, not a lot of people. Featuring disc brakes, heavy duty racks and Paul Thumbies for shifting from the top of the bars, he'll be able to see plenty of it on this rig in comfort, safety and style.

This one is painted Vanilla Shake with Ruby Red Jersey Panels and painted in graphics.



The Independence. Human powered motor home.

Seeing the world via fossil fuels is so 2008. The road opens up in front of your eyes, the only hesitation is in your mind. Go ahead, the Independence is built for the long haul. This is an expedition level, fully custom, long distance touring specific frame and fork. The Independence is an extremely durable and time-tested world traveler equipped with all of the necessary features to handle a fully loaded tour. The frame set features a heavy-duty tube set, three water bottle mounts, a complete set of rack and fender mounts, and a pump peg. This frame is available in either steel or titanium, with or without S&S couplings and comes with an IF steel touring fork.



COLOR & DECAL CHOICES

The painters here at Independent Fabrication create some of the best paint jobs in the industry. Examples are shown in detail on the IF website (www.ifbikes.com) or you can check out the IF owners website (www.ifrider.com) to see constantly updated new bike pictures from our customers. Please visit our website or ask one of our dealers for up to date paint pricing information.

Stock Paint Jobs:

We offer 24 stock paint colors that cover the range of popular basic colors, metallics, and pearls. You can choose any one of these colors and paint your new steel IF a solid color and pair it with any of our decal choices at no additional charge.

Level 1:

Additional cost.

This level includes 2 color fades, painted-in panels, team panels and many other basic paint jobs for your steel frame. Level 1 also includes basic paint options for titanium. You can paint your new titanium IF with a solid color, 3/4 paint job, or painted panels on the seat tube and down tube.

Level 2:

More additional cost.

This level includes paint jobs with multiple or complex masking, combined techniques, and additional painting time. This includes things like Flames, Ghost Flames, Jersey Panels, 3 Color Fade and many more.

Level 3:

Even more additional cost.

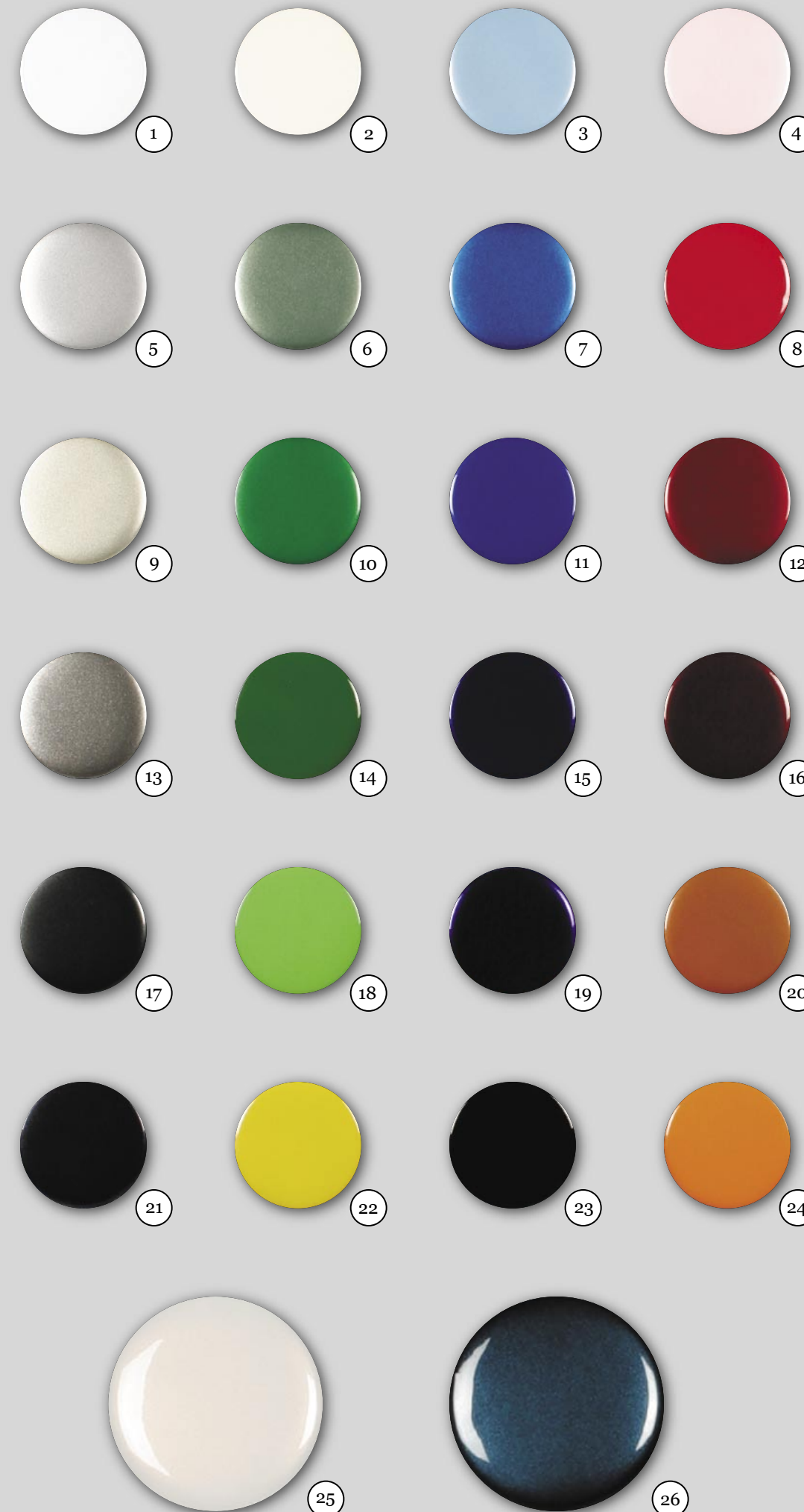
This level includes even more complex paint jobs with intricate masking, daredevil techniques, and extended painting time. This level includes Faux Lugs, Painted XS Lugs, Double Flames, and many more.

Level 4:

The cost depends on what you want.

This is the fully custom level requiring a quote from our paint department.

*** NOTE: The colors depicted in this catalog and on our website are not actual paint. We do our best to replicate these colors but real paint is real paint. Printed examples and images on a computer screen really do no justice and cannot be entirely accurate, no matter how hard we try. Please visit your local IF dealer to see actual paint and decal samples.



2009 Stock Colors

1. White (8001)
2. Vanilla Shake (90990)
3. Baby Blue Pearl (12077) (95/500)
4. Pale Pink Pearl (51596) (95/500)
5. Silver Metallic (36395)
6. Delorey Green (45800)
7. Intense Blue Pearl (5357)
8. Corsa Red (75250)
9. Shampain Metallic (913307)
10. Quetzal Green Metallic (47612)
11. Nogaru Blue (17039)
12. Ruby Red Pearl (5096)
13. Platinum (4820)
14. Gahden Green (47224)
15. Midnight Blue Metallic (190691)
16. Black Cherry Metallic (73922)
17. Meteorite Silver Metallic (912044)
18. Sprout Green (41780)
19. Purple Pearl (51487)
20. Archie Bunker Brown Metallic (27792)
21. Carbon Metallic (36208)
22. VelocityYellow (908587)
23. Gloss Black (9300)
24. Omaha Orange (60807)

Special Colors (additional charge)

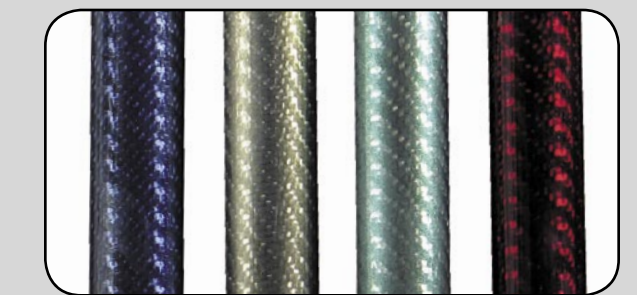
25. Freshwater Pearl (PRL88)
26. Tahitian Pearl (PRL94)



Traditional Downtube Decal (above) is available in all of the color combinations.



Special "Straight Edge No Boxes" and "Script" Downtube Decals (above) are available in white, silver, and black.



Carbon Tints

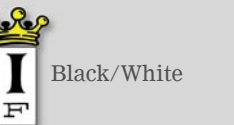
Available in blue, gold, green, and red (additional charge).



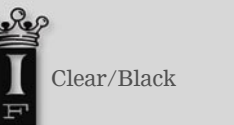
Yellow/Green



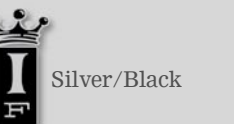
Clear/Silver



Black/White



Clear/Black



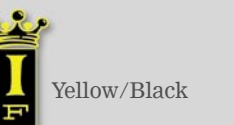
Silver/Black



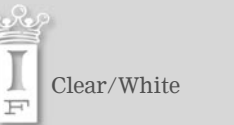
Pink/White



White/Black



Yellow/Black



Clear/White



Blue/White

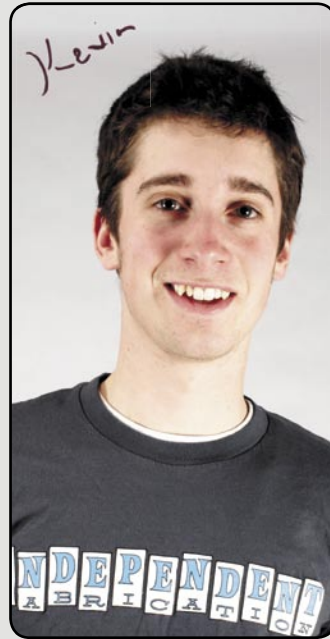
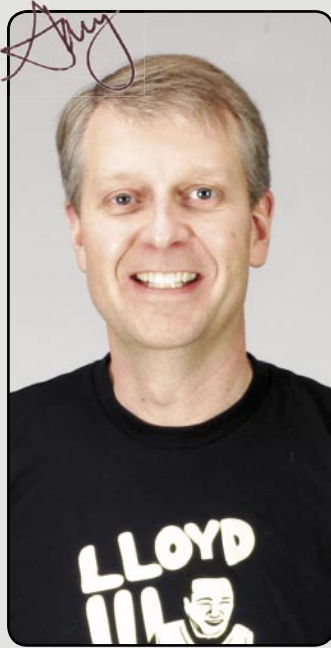
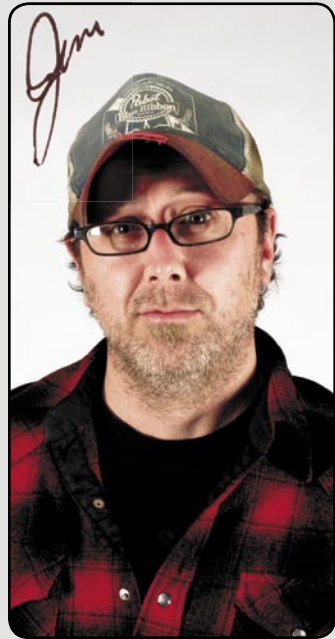
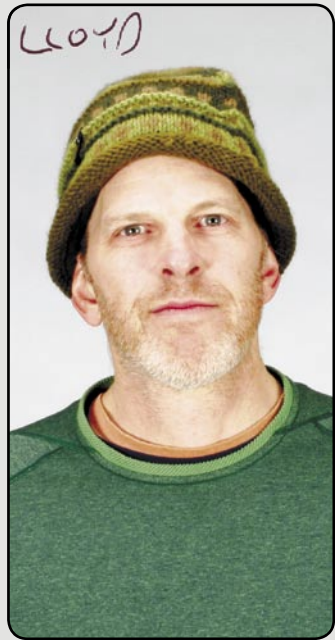


Olive/White



Orange/White

THE CREW:



Independent Fabrication was founded as a collective. It's never been about a single individual, or a specific personality. We are a group of characters with backgrounds as diverse as astronomy, engineering, neuro-science, finance, sculpture, photography, fashion... and Lloyd's from Mississippi... yet we bond together like a good weld to provide our customers with the best possible bikes and service that we can deliver.

Thanks for hanging with us. Hope to see you on the road or trail.





Independent Fabrication
86 Joy St. (rear)
Somerville, MA 02143

p. (617) 666-3609
f. (617) 666-1655
e. sales@ifbikes.com
www.ifbikes.com



50% Recycled
30% Post Consumer Waste
Printed with soy inks
FSC Certified

\$20.09