

**ZOO**

**A CLUMP OF BIKES**

**AMA**



# A CLUMP OF BIKES

www.konaor1d.com

## KONA DESIGN TEAM

During the last couple of years, the fascination and enthusiasm for the New School of off-road riding has exploded. It started out of our home trails on the North Shore Mountains of BC. Many companies have tried to associate themselves with this hotbed of Out of Bounds riding, some have even ventured to register the name as a trademark in hopes that it would make them appear to be in touch with the new breed. Fact is, Kona people have been riding the North Shore trails for the past 20 years and using it as the bottom line test for reliability since we started making bikes in 1988. These days we're being praised for carefully building strong and durable machines with a balanced ride when before, the same bikes were just considered heavy by the skeptics. Thing is, the new breed of riders have raised the bar for bike performance and we've always believed in being right there with them. How you might wonder what this Kona Clump thing is all about and think we've just moved off in a weird tangent. What we've always liked to keep in mind is that while you need to understand the science and technology behind the design and materials, it's even more important to keep in touch with the organic nature of just plain riding. There has never been an inventor who can come up with a concept and turn it into the greatest bike since the wheel was invented. The Kona way is to use the whole Clump of people that work here to really understand what works and why it works. To put the pieces together we have the Kona Design Team and this is who they are.

## PADDY WHITE

### THE BEAR

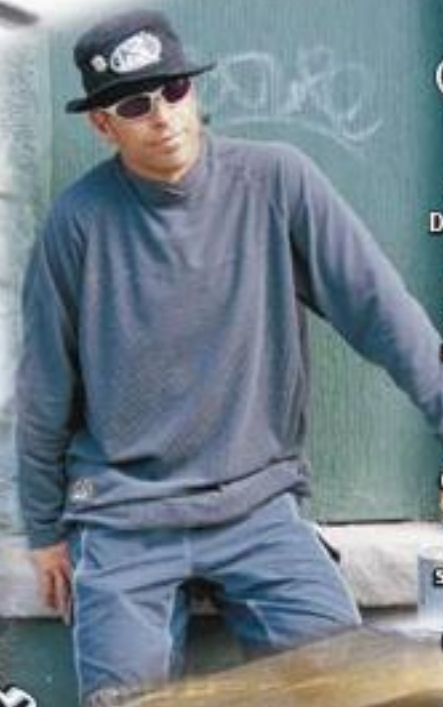
Lot of people call Paddy The Bear because he can get real grumpy sometimes. Paddy hails from Wyoming and heads up the Kona Design Clump because no one else wants to do it and he's real good at it. Paddy is a damn fine bike handler who's raced a lot of downhill. When he rode the track people knew to stay out of his way in the miss and out. Hell of a motocross rider too. Never seen anyone who can eat as much salted licorice as The Bear. His favorite trail is Devil Cross on Galbraith Mountain.



## OR DEW

### THE DIRTY DR

Well you can call him Dewey or Dr. Dew. He's the guy who figures out all the technical drawings from the sketches and thoughts that Paddy, Jake & DJ dump on him. Dew was real good at math in school, when it came time to start drafting on a computer about 10 years ago, he taught himself how to run a CAD drafting program on his own. There probably isn't anything that Dewey can't ride... water skis, tele skis, skateboard, the other day he came in carrying an old woody ski with a couple of skate trucks mounted and started riding it around the neighborhood. Whoeee that was a sight when Dewey cruised down Main on the longboard wearing that funky brown coat he found in a dumpster over top of his shorts, gumboots and a 3 color beanie. His favorite trail is Smoke's on Seymour.



## CLAY

### HIS DAD CALLS HIM JACK

Clay's a homeboy, grew up in Bham, Washington riding BMX dirt & track all day long. Well he grew up smart got a degree in science & technology at the U and learned a lot of really cool stuff. Like stress corrosion occurs by galvanic action. Which led to a dream job straight outta college designing lotsa cool BMX frames 'n parts. Clay's stuff is all over the Kona BMX bikes and sneakin' into the rest of the bikes too. Didja notice his cromoly bulge crank on the Stab Primo. His favorite trail is Double Black Diamond on Chuckanut Mountain.



# OUT OF BOUNDS DUAL SUSPENSION



CHECK OUT THE CLUMP RIDERS IN NEW WORLD ORDER...

OR, OK... NORTH SHORE BOY FACTORY CLUMP MANAGER.

## KONA FACTORY TEAM CLUMP

Out of Bounds is a term that really defines the New School of Mountain Biking. After all Free Riding only describes riding that isn't competition. The New Breed rides with so much intensity that it pushes the limits of off-road beyond recognition every day. Out of Bounds trails start with the most demanding terrain and go beyond there with a circus of ramps, ladders, teeter-totters and drop-offs that would be unrecognizable to the pioneers of mountain biking. The Kona Stinky series started off as an adapted 4-bar dual suspension Downhill machine that could provide a solid platform for extreme rider's styles but allow them to ride all day without the need to shuttle. These bikes are heavy, all right - 35 pounds and more - because they have to be. Five inches of front and rear travel with the strongest and most reliable parts to handle the toughest conditions. Stinky. The Smell is Sublime.

KONA CLUMP 7005  
ALUMINUM TUBES - HUGE  
SQUARE - OVAL TAPER  
SHAPE FOR HUGE  
MANIFOLD STRENGTH -  
JOINED IN A POWERFUL  
MASS AT THE HEADTUBE  
SO GUSSETING AND  
EXTRA WELDING ARE NOT  
NECESSARY -



## STINKY DEE-LUX

The entire Stinky series shares a completely revamped and even stronger Stinky frameset. Seriously strong custom designed Kona Clump 7005 Aluminum tubeset. Massive forged chainstay yoke, seatstay yoke & dropouts and huge chainstays for powerful acceleration. Reinforced straight seat tube allows wider seatpost height variation. Massive reinforced contact area at headtube. Five BIG inches of front and rear wheel travel.

TRUITY ISIS DRIVE SPLINED BOTTOM BRACKET - A STEP UP IN BOTTOM BRACKET TECHNOLOGY. FINALLY A SYSTEM THAT WORKS IN THE OUT OF BOUNDS. WITH MORE THAN DOUBLE THE CONTACT AREA OF OTHER SYSTEMS. THE STRONGEST CRANK / BB INTERFACE.



# OUT OF BOUNDS HARDTAIL

## HAPPY LANDINGS

There are basically two types of landings. Steep landings require the shock absorption of rear suspension. But flatter and slower and more precise jumps & drops call for the greater pedalling and balance efficiency of a hardtail. But not any hardtail. This group of bikes celebrates the idea that Out of Bounds is everywhere. Any object on any trail or sidewalk, stairs or ramp is a challenge that can be met with the right preparation & attitude. A skilled rider can land those obstacles, but what's left behind when you walk away is our challenge. This pioneering group of New School machines has those landings nailed. Now, you wanted to know about the Four inch fork travel, right. Precision is the key factor for OB Hardtail. Four just right, Five too long. And the Double Chaining with a Ring Guard. Agility, Accuracy, Quickness are the keys. Speed is not an issue. Survival Ranks High on our List.



**CHUTE**  
Kona Clump 7005 Aluminum tubing with Cold Forged Bottom Bracket Yoke. Four inch Bomber Z3 with QR20 Plus. Race Face Prodigy Crank with Rock Guard and TruVativ ISIS splined B/B. Hayes Hydraulic Disc Brakes.



**SCAB**  
Out of Bounds Urban Assault Machine. Good honest jumpin' fun with good parts you can count on. Kona XXX Cromoly frame. Kona Cromoly Jump Fork. TruVativ Firex Crank with Kona Ring of Fire Guard and TruVativ ISIS splined B/B.

**KONA CLUMP FRAME TUBING**  
Heat treated 7005 Thick Wall Aluminum. Starts with Beefy Square to Oval main tubes for a powerful mainframe. Chunked-Out massive rear stays. Build & Test & Build & Test. Bring on the Big Stuff.

## COLD-FORGED REAR DISC MOUNT DROPOUT

Hard rear wheel landings rely on a strong platform. The integrated disc mount unit is a solid connection to a specifically designed non-drive chainsay.



## REINFORCED HEAD TUBE

The result of a sloping top tube. The head tube is longer. Your frame, headset, fork, handlebar, stem and front wheel will be grateful. And Reliable.

## SLOPING TOP TUBE DESIGN

A Kona Trademark. Right Up the Out of Bounds Alley. More Clearance, More Maneuverable, More Acceleration, Stronger.

# DOWNHILL & DUAL SLALOM

## THE RACE TO BE NUMBER ONE

has long been in the Kona bloodstream \_ The original Kona Mountain Bikes were designed as performance race machines \_ Paddy's dream for a couple of years was to make the Numero Uno DH race machine period \_ After Mountain Bike Action called Stab Primo the Best Production DH bike of 1999 and confirmed that rating again in 2000, The Bear was pretty happy \_ But not satisfied \_ A design may be great but can always be refined and improved \_ And so it was \_ But that is easier to do when you have a World Cup budget like the Primo \_ The great challenge for 2001 was to make an affordable REAL Privateer DH bike \_ something that could be comfortable for everyday Out of Bounds AND performance oriented for DH competition \_ The new 6" Stab is the result \_ Although some people might call it the Stinky Six \_ The sleeper in this threesome is the DuDu \_ Yes, it stands for Dual Slalom, Dual Suspension \_ This is really Scott Beaumont's bike 'cuz he had the foresight to see that Dual slalom was getting bigger and called for Dual suspension \_ The Kona Clump tube set was designed specifically for this bike \_ Four and Four inches of travel front and rear seems to be the ideal ticket for this World Cup rig \_



## SCOTT BEAUMONT

Racing since he was a kid, Boom Boom got his start in BMX at 7 \_ later took the BMX World Championship in 1995 & 1996 \_ And that was just the beginning of his career \_ Since his conversion to 26" wheels, Scott has risen steadily through the World Cup Dual Slalom ranks \_ As we were writing this, he was 3rd overall in the World Cup \_ His DuDu dual slalom machine was the result of Scott's collaboration with the Kona Design Team \_

## TRACY MOSELEY

Ranked Top Five in the World and Top Three in Europe \_ Tracy's Podium Placings are making a mark on the New Breed of Downhillers \_ Biology Major \_ [www.secondevelsport.com/teamkona/team2000/riders/tracy/profile.htm](http://www.secondevelsport.com/teamkona/team2000/riders/tracy/profile.htm)



## STAB PRIMO

World Cup Worthy Downhill Dream \_ Two Years In A Row Top Production Downhill Mountain Bike (Mountain Bike Action) \_ Up to Nine Inches Rear Wheel Travel \_ NEW Stealthy Marzocchi Upside Down Shiver World Cup Fork with Seven Inches Travel \_ NEW Kona Cromoly Steel Crank \_ Powerful and Proven Kona Four-Bar Dual Suspension Linkage System \_ Custom Fox DH coil-over rear shock \_

# DOWNHILL & DUAL SLALOM

## THE RACE TO BE NUMBER ONE

has long been in the Kona bloodstream \_ The original Kona Mountain Bikes were designed as performance race machines \_ Paddy's dream for a couple of years was to make the Numero Uno DH race machine period \_ After Mountain Bike Action called Stab Primo the Best Production DH bike of 1999 and confirmed that rating again in 2000, The Bear was pretty happy \_ But not satisfied \_ A design may be great but can always be refined and improved \_ And so it was \_ But that is easier to do when you have a World Cup budget like the Primo \_ The great challenge for 2001 was to make an affordable REAL Privateer DH bike \_ something that could be comfortable for everyday Out of Bounds AND performance oriented for DH competition \_ The new 6" Stab is the result \_ Although some people might call it the Stinky Six \_ The sleeper in this threesome is the DuDu \_ Yes, it stands for Dual Slalom, Dual Suspension \_ This is really Scott Beaumont's bike 'cuz he had the foresight to see that Dual slalom was getting bigger and called for Dual suspension \_ The Kona Clump tube set was designed specifically for this bike \_ Four and Four inches of travel front and rear seems to be the ideal ticket for this World Cup rig \_



## SCOTT BEAUMONT

Racing since he was a kid, Boom Boom got his start in BMX at 7 \_ later took the BMX World Championship in 1995 & 1996 \_ And that was just the beginning of his career \_ Since his conversion to 26" wheels, Scott has risen steadily through the World Cup Dual Slalom ranks \_ As we were writing this, he was 3rd overall in the World Cup \_ His DuDu dual slalom machine was the result of Scott's collaboration with the Kona Design Team \_

## TRACY MOSELEY

Ranked Top Five in the World and Top Three in Europe \_ Tracy's Podium Placings are making a mark on the New Breed of Downhillers \_ Biology Major \_ [www.seconlevelsport.com/teamkona/](http://www.seconlevelsport.com/teamkona/) [team2000riders/tracy/profile.htm](http://team2000riders/tracy/profile.htm)



## STAB PRIMO

World Cup Worthy Downhill Dream \_ Two Years In A Row Top Production Downhill Mountain Bike (Mountain Bike Action) \_ Up to Nine Inches Rear Wheel Travel \_ NEW Stealthy Marzocchi Upside Down Shiver World Cup Fork with Seven Inches Travel \_ NEW Kona Cromoly Steel Crank \_ Powerful and Proven Kona Four-Bar Dual Suspension Linkage System \_ Custom Fox DH coil-over rear shock \_

# CROSS COUNTRY HARDTAILS

## PURE RACING HERITAGE

The first Kona Mountain Bikes were bikes designed by Mountain Bike Hall of Fame racer Joe Murray specifically for the use of the Kona Factory Cross-Country race team. Over the years, dozens of the World's top racers have tested and proven our pioneering sloping top tube hardtail design, helping us refine it down to the bare essentials of a pure cross-country performance machine. This year's crop of cross-country hardtails is focused on trimming every gram off, but ONLY if it means that the bottom line of reliability is not hurt. Details down to superlight inner tubes, alloy spoke nipples, Shimano Hollowtech cranks and bottom brackets, Titanium seat rails and Ultralight saddle foam are all part of the package that makes our hardtail racers an ideal selection for pure performance.



**EXPLOSIFF**

Limited Production. Kona Cross-Country Factory Team machine. Lightest Kona Mountain Bike - 21.9 lbs (9.95 kilos). Superlight & Resilient Easton Scandium Aluminum frame tubing. Pure selection of lightweight performance components. Did we say Limited Production?



MARZOCCHI ATOM 80 RR. NEW PLUSH AND LIGHTWEIGHT BOMBER FORK. COIL SPRING. OPEN BATH OIL DAMPING. PRELOAD & REBOUND ADJUSTABLE. BEAUTIFUL NEW BOMBER ONE PIECE ARCH.



**KONA**

Lightweight Cross-Country Race Performer. Beautiful, Light & Strong Easton Ultralite frame. Lightweight Rock Shox XC Hydra Air fork.

# CROSS COUNTRY HARDTAILS

## THE (VERY SHORT) HISTORY OF KONA

A bike is a bike is a bike? More than the metal & rubber - it's the ride. Over the years of building bikes and riding our local North Shore trails, we've refined the classic Kona hardtail frame. The long sloping top tube shape is classed as one of the best balanced and efficient single track designs anywhere. The success of the ride can be attributed to the fact that it was tested and proven on the gnarly technical trails of our now famous back yard, Vancouver's North Shore Mountains. Cross country riders around the world swear by the balance and confidence-inspiring ride. As a bike company we have always believed in the beauty of a great ride. Feel the Flow.



The purists among you say Steel is Real. Classic Steel Mountain Bike. Kona Custom Cromoly Double-Butted Frame with Ritchey dropouts. Rock Shox Jett fork with preload adjusters. Excellent Expedition Machine.

## KONA IS CONSTANTLY EVALUATING

& adjusting frame designs as rider demands and technology changes. Rather than re-inventing the mountain bike every season based on the latest trend, we choose to fine-tune our proven designs. While the sloping top tube design that we pioneered over a dozen years ago has been largely imitated, we continue to improve function with significant and subtle refinements.

**KONA CUSTOM BUTTED** frame tubing is designed so that thickness, tapers and buttings are matched for a perfect ride.

**LONGER HEAD TUBE** for better shock distribution, stronger frame & longer headset bearing life.

**LONGER THAN AVERAGE TOP TUBE** gives more room for correct positioning and free body movement.

**SLOPING FRAME DESIGN** allows more stand-over clearance.

**CLOSER TO PARALLEL TOP AND DOWN TUBE** for more vertically compliant main frame.

**COMPACT REAR TRIANGLE** for efficient acceleration.



Fun Mountain Machine. NuNu is Hawaiian Celebration. Light Weight & Strong. Great for your first race, street or all-day adventures. Kona 7005 Butted Aluminum. Rock Shox Jett fork with preload adjusters.



# CROSS COUNTRY HARDTAILS

## FIT & FUNCTION

A lot of bicycle companies spend all their time developing prototype show machines that get front covers but never get made or even ridden \_ as riders and not inventors, lifetime bike biz folks and not ego-heads, we've always felt the bikes we make for Rippin' Around are probably the most important bikes to build perfectly \_ You will not find our bikes competing in the lowest price categories in your local shop, because there are some corners that just shouldn't be cut \_ Rather than adopting a mass market mentality and building bikes for the lowest common denominator, we take great pride in adapting all the important Kona features to every single mountain bike we make \_ One more thing that you will appreciate when it comes time to get fitted on the perfect size bike for you \_ Kona size range is among the widest in the bike biz \_ Just about every bike is made in 14" frame size, which allows riders as young as 8 to fit on a full-size wheel bike \_ We also make tighter increments in sizing, with up to 7 sizes in every model \_

KONA BEER PITCHER \_ 64 OUNCE  
HEAVY-DUTY GLASS \_ KONA PINT  
GLASS \_ 16 OUNCE HEAVY-DUTY  
US GLASS



## FIRE MOUNTAIN

Another completely re-vamped Kona original model \_ Kona 7005 Butted Aluminum \_ Insync 266 Suspension fork with adjusters \_ Completely true to the philosophy of a Genuine Kona ride \_



## HAHANNA

Hahanna Hot in Hawaiian \_ Kona Classic steel machine for solid recreational and transport fun \_ Shimano Rapidfire shifting \_ Precise and strong Project Two fork for a balanced ride \_ Top notch Hutchinson Cameleon tires roll smooth and steady on the street and mountain trails \_

BEWEY TOUGH GUY \_  
PRIMO BASEBALL CAP \_  
AIR TIME WIND VEST \_  
BIG TIME SHORTS \_  
PRIMO SOCKS

# SPECIFICATIONS

	STONEY	STONEY DUE-LUX	STONEY PRIMO	SCAB	STUFF	ROAST	SHUT	
<b>MODEL</b>	STONEY	STONEY DUE-LUX	STONEY PRIMO	SCAB	STUFF	ROAST	SHUT	
<b>Frame sizes (inches)</b>	S/S (M/21) (L/28) (XL/29) (XXL/30)	S/S (M/21) (L/28) (XL/29) (XXL/30)	S/S (M/21) (L/28) (XL/29) (XXL/30)	X/S (S/15) (S) (M/21) (L/28) (XL/29)	X/S (S/15) (M/21) (L/28) (XL/29)	X/S (S/15) (S) (M/21) (L/28) (XL/29)	X/S (S/15) (M/21) (L/28) (XL/29)	
<b>Frame tubing</b>	One Custom Clamp 7005 OB Aluminum Tubing, Rectangular to Round Taper Main Tubes, Top Tube Seat Tube Gasket. Tapered Iso Section Rear Stay. Integrated Cold Forged Bottom Bracket, Chain Stay Pin, Cold Forged Asymmetric Chain Stay Yoke, Cold Forged Yoke Q. Dropout with Integrated IS Disc Mounts. Replaceable Derailleur Hanger. Cold Forged SMachined Head Tube, Cold Forged Seat Stay Yoke, Forker & Seat Tube Pin.	One Custom Clamp 7005 OB Aluminum Tubing, Rectangular to Round Taper Main Tubes, Top Tube Seat Tube Gasket. Tapered Iso Section Rear Stay. Integrated Cold Forged Bottom Bracket, Chain Stay Pin, Cold Forged Asymmetric Chain Stay Yoke, Cold Forged Yoke Q. Dropout with Integrated IS Disc Mounts & Replaceable Derailleur Hanger. Cold Forged SMachined Head Tube, Cold Forged Seat Stay Yoke, Forker & Seat Tube Pin.	One Custom Clamp 7005 OB Aluminum Tubing, Rectangular to Round Taper Main Tubes, Top Tube Seat Tube Gasket. Tapered Iso Section Rear Stay. Integrated Cold Forged Bottom Bracket, Chain Stay Pin, Cold Forged Asymmetric Chain Stay Yoke, Cold Forged Yoke Q. Dropout with Integrated IS Disc Mounts & Replaceable Derailleur Hanger. Cold Forged SMachined Head Tube, Cold Forged Seat Stay Yoke, Forker & Seat Tube Pin.	One XXX 4130 Chromoly Frame. On-estate 81-Quad Chromoly Down Tube. Full Wrap He at Tube Gasket. Reinforcing Down Tube Gasket. Live-axle, Cast Dropouts.	One Custom Clamp 7005 Aluminum Tubing, Full Wrap Head Tube Gasket & Reinforcing Down Tube Gasket. Cold Forged Bottom Bracket & Cold Forged Bottom Bracket IS. Replaceable Derailleur Hanger & Integrated IS Disc Mounts. Cold Forged & Machined He at Tube.	One Custom Clamp 7005 OB Aluminum Tubing, Rectangular to Round Taper Main Tubes, Iso Section Rear Stay. Cold Forged Bottom Bracket IS. Replaceable Derailleur Hanger & Integrated IS Disc Mounts. Cold Forged & Machined He at Tube.	One Custom Clamp 7005 OB Aluminum Tubing, Rectangular to Round Taper Main Tubes, Iso Section Rear Stay. Cold Forged Bottom Bracket IS. Replaceable Derailleur Hanger & Integrated IS Disc Mounts. Cold Forged & Machined He at Tube.	One Custom Clamp 7005 OB Aluminum Tubing, Rectangular to Round Taper Main Tubes, Iso Section Rear Stay. Cold Forged Bottom Bracket IS. Chain Stay Yoke & Rear Dropout with Replaceable Derailleur Hanger & Integrated IS Disc Mounts. Cold Forged & Machined Head Tube.
<b>Shock</b>	Fox Vanilla F	Fox Vanilla F	Fox Vanilla RC					
<b>Fork</b>	Marcoschi 25 130mm coil	Marcoschi 23 QR26+ 130mm coil	Marcoschi 23 QR26+ 130mm coil	One Chromoly Jump	Marcoschi 25 130mm coil	Marcoschi 24 QR 130mm coil	Marcoschi 23 QR26+ 130mm coil	
<b>Brace-on-Rings</b>	Water bottle	Water bottle	Water bottle	Water bottle	Water bottle	Water bottle	Water bottle	
<b>Headset</b>	Aheadset S1-1	Aheadset S1-1	Aheadset S1-1	Aheadset S1-1	Aheadset S1-1	Aheadset S1-1	Aheadset S1-1	
<b>Crankarms</b>	TroVatin Husselet DH	Face/face Prodigy Splayed	Face/face North Shore	TroVatin Fire Splayed	TroVatin Husselet DH Splayed	Face/face Prodigy Splayed	Face/face Prodigy Splayed	
<b>Chainrings</b>	42/32/22	44/32/22	44/32/22	32/22	32/22	32/22	32/22	
<b>B/B</b>	TroVatin Hollow Splayed	TroVatin Hollow Splayed	TroVatin Hollow Splayed	TroVatin Hollow Splayed	TroVatin Hollow Splayed	TroVatin Hollow Splayed	TroVatin Hollow Splayed	
<b>Pedals</b>	SRBp Skatons	Shimano MS45	Shimano MS45	Volge Skatons	Volge Skatons	Volge Skatons	SRBp Skatons	
<b>Chain</b>	Shimano CS-21	Shimano CH-HGT2	Shimano CH-HGT2	Shimano CS-21	Shimano CH-HGT2	Shimano CH-HGT2	Shimano CH-HGT2	
<b>Front hub</b>	Shimano CS-H65 6-11-32 8 speed	Shimano Deore LX	Shimano Deore XT	12-30 8 speed	Shimano CS-H65 6-11-32 8 speed	Shimano Deore LX	Shimano Deore LX	
<b>R/D</b>	Shimano Deore LX	Shimano Deore LX	Shimano Deore XT	Shimano Alivio	Shimano Deore	Shimano Deore LX	Shimano Deore LX	
<b>R/D</b>	Shimano Deore	Shimano Deore XT	Shimano XT	Shimano Alivio	Shimano Deore	Shimano Deore LX	Shimano Deore XT	
<b>Shifters</b>	Shimano Alivio	Shimano Deore LX	Shimano Deore XT	Shimano Alivio	Shimano Alivio	Shimano Deore	Shimano Deore LX	
<b>Handlebar</b>	Yone OH Aluminum	Yone DH Aluminum Rose	Yone DH Prime Aluminum Rose	Yone OH Aluminum Rose	Yone OH Aluminum Floor	Yone OH Aluminum Rose	Yone DH Aluminum Floor	
<b>Stem</b>	Yone Clamp	Yone Clamp	Yone Serial Pepa	Yone Clamp	Yone Clamp	Yone Clamp	Yone Clamp	
<b>Grips</b>	Yone Pseudopod Glove	Yone Pseudopod Glove	Yone Pseudopod Glove	Yone Pseudopod Glove	Yone Pseudopod Glove	Yone Pseudopod Glove	Yone Pseudopod Glove	
<b>Brakes</b>	Avid Arch Pin	Hydr Hydraulic Disc	Hydr Hydraulic Disc	Te Hro 829A	Avid Single Digit 5	Avid Arch Pin	Hydr Hydraulic Disc	
<b>Brake Levers</b>	Avid Speed Dial 5	Hydr Hydraulic Disc	Hydr Hydraulic Disc	Shimano Alivio	Avid Speed Dial 5	Avid Speed Dial 5	Hydr Hydraulic Disc	
<b>Front hub</b>	HY QR 20 Disc	HY QR 20 Disc	HY QR 20 Disc	Yone Bulge	HY Disc	HY Disc	HY QR 20 Disc	
<b>Rear hub</b>	Shimano M85 disc	Shimano Deore XT Disc	Shimano Deore XT Disc	Shimano Acorax	Shimano M85 disc	Shimano M85 disc	Shimano Deore XT Disc	
<b>Spokes</b>	34g Stainless front and rear	34g Stainless front and rear	34g Stainless front and rear	Stainless 34g front and rear	Stainless 34g front and rear	Stainless 34g front and rear	Stainless 34g front and rear	
<b>Tires</b>	Topo Factory DH	Topo Factory DH	Topo Factory DH	Topo Factory DH	Topo Factory DH	Topo Factory DH	Topo Factory DH	
<b>Wires</b>	26 x 2.1	26 x 2.1	26 x 2.1	26 x 2.1	26 x 2.1	26 x 2.1	26 x 2.1	
<b>Seatpost</b>	Sun Ditch/With Blade	Mavic FS19	Mavic FS29	Sun Ditch/With Blade	Sun Ditch/With Blade	Sun Ditch/With Blade	Mavic FS29	
<b>Seatpost</b>	SDG Grand Prix Co-Mo	SDG Grand Prix Fender Co-Mo	SDG Grand Prix Fender Co-Mo	SDG Comp	SDG Grand Prix	SDG Grand Prix Co-Mo	SDG Grand Prix Fender Co-Mo	
<b>Seat clamp</b>	Yone Thumb	Yone OP	Yone OP	Yone OP	Yone Thumb	Yone Thumb	Yone OP	
<b>Color</b>	Electric Green	Pastel Yellow/Green	Flat Black & Polish	Gloss Black	Electric Green	Electric Green	Horizon Dirt	

	HULA	HAMAN HA	FIRE MOUNTAIN	BLAST	LAVA DO ME	NUNO	CINDER CONE	CALDERA
<b>MODEL</b>	HULA	HAMAN HA	FIRE MOUNTAIN	BLAST	LAVA DO ME	NUNO	CINDER CONE	CALDERA
<b>Frame sizes (inches)</b>	21" Frame w/21" wheels	24/26/28/29/30	24/26/28/29/30/31	24/26/28/29/30/31	24/26/28/29/30	24/26/28/29/30/31	24/26/28/29/30/31	24/26/28/29/30/31
<b>Frame tubing</b>	One Custom Butted 7005 Aluminum, Cold Forged Bottom Bracket & Rear Dropouts, Replaceable Derailleur Hanger	Main Frame	Aluminum frame, Cold Forged Bottom Bracket & Rear Dropouts, Replaceable Derailleur Hanger	Aluminum frame, Cold Forged Bottom Bracket & Rear Dropouts, Replaceable Derailleur Hanger	One Custom Butted 6061 Comoly steel, Tapered Seat Stay, Flatbar Dropouts	Aluminum frame, Reinforcing Down Tube Gasket, Cold Forged Bottom Bracket & Rear Dropouts, Cold Forged IS Machined He at Tube	7005 Aluminum frame, Cold Forged Bottom Bracket, Cold Forged Rear Dropout with Replaceable Derailleur Hanger & Integrated IS Disc Mounts, Reinforcing Down Tube Gasket, Cold Forged Head Tube	7005 Aluminum frame, Cold Forged Bottom Bracket, Cold Forged Rear Dropout with Replaceable Derailleur Hanger & Integrated IS Disc Mounts, Reinforcing Down Tube Gasket, Cold Forged He at Tube
<b>Shock</b>								
<b>Fork</b>	RST 26 124 50mm	Yone Project Tire Spot	RST 26 124 50mm	DSync 32T 70mm	Red Shox Jetty adjustables	Red Shox J.B. v adjustables	Red Shox Judy 80mm	Marcoschi 25 50mm coil
<b>Brace-on-Rings</b>	Water bottle, rack, fenders	Water bottles, fenders, rack	Water bottles, fenders, rack	Water bottles, fenders, rack	Water bottle, rack, fenders	Water bottle, rack, fenders	Water bottles, fenders, rack	Water bottles, fenders, rack
<b>Headset</b>	Topset DTE	Aheadset S15	Aheadset S15	Aheadset S15	Aheadset S15	Aheadset S15	Aheadset S15	Aheadset S15
<b>Crankarms</b>	Q-dote	Cyclone	Q-dote	TroVatin Fire 0	Shimano FC-MC26	Shimano FC-MC26	Shimano FC-M40-L	Shimano FC-M40-S
<b>Chainrings</b>	46/36/26	43/32/22	43/32/22	43/32/22	43/32/22	43/32/22	44/32/22	44/32/22
<b>B/B</b>	TM-M1	Shimano LP-2T	Shimano LP-2T	Shimano LP-2T	Shimano LP-2T	Shimano LP-2T	Shimano LP-2T	Shimano LP-2T
<b>Pedals</b>	SRBp	Volge	SRBp	Volge	SRBp with Tor Clips/Straps	Volge with Tor Clips/Straps	Volge with Tor Clips/Straps	Shimano PD-M5-ES
<b>Chain</b>	Shimano US-50	Shimano G-31	Shimano G-31	Shimano G-31	Shimano G-31	Shimano G-31	Shimano CH-HGT2	Shimano CH-HGT2
<b>Front hub</b>	11-30 7 speed	12-30 8 speed	12-30 8 speed	12-30 8 speed	12-30 8 speed	SPM 12-30 8 speed	Shimano Deore	Shimano Deore
<b>R/D</b>	Shimano Tourne	Shimano Acorax	Shimano Ace-X	Shimano Acorax	Shimano Alivio	Shimano Alivio	Shimano Deore	Shimano Deore
<b>R/D</b>	Shimano Tourne	Shimano Acorax	Shimano Ace-X	Shimano Deore	Shimano Deore	Shimano Deore	Shimano Deore LX	Shimano Deore XT
<b>Shifters</b>	Grip Shift MPX-105	Shimano Rapidfire	Shimano Rapidfire	Shimano Rapidfire	Shimano Alivio Rapidfire	Shimano Alivio Rapidfire	Shimano Deore	Shimano Deore
<b>Handlebar</b>	Yone Rose	Yone Floor	Yone Rose	Yone Aluminum Rose	Yone Aluminum Floor	Yone Aluminum Rose	Yone Aluminum Floor	Yone Aluminum Floor
<b>Stem</b>	Yone Control	Yone Control	Yone Control	Yone Control	Yone Control	Yone Control	Yone Control	Yone Control
<b>Grips</b>	QJ Grippa	Yone Microstraddle	Yone Microstraddle	Yone Pseudopod Glove	Yone Pseudopod Glove	Yone Pseudopod Glove	Yone Pseudopod Glove	Yone Pseudopod Glove
<b>Brakes</b>	Tektro 829A	Tektro 829A	Tektro 829A	Tektro 829A	Avid Single Digit 3	Avid Single Digit 3	Avid Single Digit 3	Avid Single Digit 3
<b>Brake Levers</b>	Grip Shift MPX-105	Shimano Rapidfire	Shimano Rapidfire	Shimano Rapidfire	Avid A23	Avid A23	Avid A23	Avid A23
<b>Front hub</b>	Joe's OP	Joe's OP	Joe's OP	Joe's OP	Joe's OP	Joe's OP	Shimano Deore	Shimano Deore
<b>Rear hub</b>	Joe's	Shimano Acorax	Shimano Ace-X	Shimano Acorax	Shimano Alivio	Shimano Alivio	Shimano Deore	Shimano Deore
<b>Spokes</b>	Silver Stainless 15g	Silver Stainless 25g F14gr	Silver Stainless 15g F14gr	Silver Stainless 25g F14gr	Silver Stainless 15g F14gr	Silver Stainless 25g F14gr	Silver Stainless 15g F14gr	Silver Stainless 25g F14gr
<b>Tires</b>	K-Hobby	Hutchinson Camelion	Hutchinson Camelion	Topo Factory XC	Topo Factory XC	Topo Factory XC	Topo Factory XC	Topo Factory XC
<b>Wires</b>	26 x 1.9	26 x 1.9	26 x 1.9	26 x 1.9	26 x 1.9	26 x 1.9	26 x 1.9	26 x 1.9
<b>Seatpost</b>	Mavic X29	Sun MC28	Sun MC28	Mavic X29	Mavic X29	Mavic X29	Mavic X29	Mavic X29
<b>Seatpost</b>	LC29	Yone Flush	Yone Flush	SDG Comp	SDG Comp	SDG Comp	SDG Comp	SDG Comp
<b>Seat clamp</b>	LC 203	LC 203	LC 203	LC 203	Yone Thumb	Yone Thumb	Yone Thumb	Yone Thumb
<b>Color</b>	Electric Red	Electric Red	Bright Gold Metallic	Bright Silver Metallic	Yone Orange	Electric Blue	Gloss Black	Electric Red

# GEOMETRY & SIZING

## OUT OF BOUNDS DUAL SUSPENSION



### STINKY/STINKY DEE-LUX/STINKY PRIMO

Frame Size	S (M)	M (D)	L (M)	XL (M)	XXL (2M)
Head Angle (A)	71°	71°	71°	71°	71°
Seat Angle (B)	74°	74°	74°	74°	74°
Top Tube (C)	21.4"	21.4"	22.9"	23.4"	23.9"
Chain Stay (D)	16.9"	16.9"	16.9"	16.9"	16.9"
Wheel Base (E)	41.7"	41.7"	42.2"	42.7"	43.2"
Fork Offset (F)	1.7"	1.7"	1.7"	1.7"	1.7"
BB Height (G)	11.4"	11.4"	11.4"	11.4"	11.4"
Standover	26.7"	27"	27.5"	27.5"	27.7"
Crank Length	170mm	175mm	175mm	175mm	175mm
Stem Size	25/30mm	25/30mm	25/30mm	25/30mm	25/30mm

## OUT OF BOUNDS HARDTAIL



### SCAB/STUFF/ROAST/CHUTE

Frame Size	S (D)	M (D)	M (D)	L (D)	XL (M)
Head Angle (A)	71°	71°	71°	71°	71°
Seat Angle (B)	74°	74°	74°	74°	74°
Top Tube (C)	21.7"	21.7"	22"	22.5"	23"
Chain Stay (D)	16.75"	16.75"	16.75"	16.75"	16.75"
Wheel Base (E)	41.4"	41.4"	41.7"	42.2"	42.7"
Fork Offset (F)	1.6"	1.6"	1.6"	1.6"	1.6"
BB Height (G)	11.7"	11.7"	11.7"	11.7"	11.7"
Standover	27"	26.9"	26.7"	27"	27.6"
Crank Length	170mm	170mm	175mm	175mm	175mm
Stem Size	25/30mm	25/30mm	25/30mm	25/30mm	25/30mm

## CROSS COUNTRY DUAL SUSPENSION



### MANOMANO/MOROMOKO/KING KIKAPU

Frame Size	14"	15"	17"	18"	19"	21"
Head Angle (A)	71°	71°	71°	71°	71°	71°
Seat Angle (B)	74°	74°	74°	74°	74°	74°
Top Tube (C)	21.4"	21.6"	22.6"	23.1"	23.6"	24.1"
Chain Stay (D)	17"	17"	17"	17"	17"	17"
Wheel Base (E)	41.9"	42.1"	42.7"	42.9"	43.4"	43.9"
Fork Offset (F)	1.5"	1.5"	1.5"	1.5"	1.5"	1.5"
BB Height (G)	11"	11"	11"	11"	11"	11"
Standover	27"	26.8"	26.7"	27"	27"	27"
Crank Length	170mm	170mm	175mm	175mm	175mm	175mm
Stem Size	25/30mm	15/30mm	25/30mm	25/30mm	25/30mm	25/30mm

## CROSS COUNTRY HARDTAIL



### HAWAII/ARE MOUNTAIN

#### - CROSS COUNTRY HARDTAIL RECREATION

Frame Size	14"	16"	18"	18"	20"	21"
Head Angle (A)	70.5°	70.5°	70.5°	70.5°	70.5°	70.5°
Seat Angle (B)	74°	74°	74°	74°	74°	74°
Top Tube (C)	21"	22.5"	22.5"	22"	23.5"	24"
Chain Stay (D)	16.75"	16.75"	16.75"	16.75"	16.75"	16.75"
Wheel Base (E)	41.7"	41.7"	42.2"	42"	42.7"	43.2"
Fork Offset (F)	1.7"	1.7"	1.7"	1.7"	1.7"	1.7"
BB Height (G)	11.9"	11.9"	11"	11"	11.7"	12.1"
Standover	25.7"	27.7"	29.7"	30.5"	31.7"	32"
Crank Length	170mm	170mm	175mm	175mm	175mm	175mm
Stem Size	25/30mm	25/30mm	25/30.5mm	25/30.5mm	25/31mm	25/32mm



### KULA - CROSS COUNTRY HARDTAIL (24" WHEEL)

Frame Size	17"
Head Angle (A)	70.5°
Seat Angle (B)	73°
Top Tube (C)	23.7"
Chain Stay (D)	16.5"
Wheel Base (E)	42"
Fork Offset (F)	1.5"
BB Height (G)	11.7"
Standover	31.5"
Crank Length	165mm
Stem Size	1/50mm

## WARRANTY

The Kona Limited Life time warranty is only available to registered Kona owners. The Kona Limited Life time warranty covers manufacturing and material defects but excludes crashes and bad landings.

Wild maneuvers are fun but bikes and bones can break; have fun but be aware!

Wear a helmet! Riders pictured in the catalog are professionals, don't try these stunts at home!

Specifications are subject to change. Eat your greens!



### BLAST/MIMI/LAVA DOME/CINDER CONE/CALDERA/MIMI-MILA/PAHOE/KAULA/EXPLOSIF

#### - CROSS COUNTRY HARDTAIL FUN AND PRICE

Frame Size	14"	16"	17"	18"	18"	20"	21"	21"
Head Angle (A)	70.5°	70.5°	71°	71°	71°	71°	71°	71.5°
Seat Angle (B)	74°	74°	74°	74°	74°	74°	74°	74.5°
Top Tube (C)	21.7"	22.1"	22.7"	22"	22.5"	24"	24.5"	24.6"
Chain Stay (D)	16.75"	16.75"	16.75"	16.75"	16.75"	16.75"	16.75"	16.75"
Wheel Base (E)	41.7"	42.1"	42.7"	42"	42.7"	42.7"	43"	43.4"
Fork Offset (F)	1.5"	1.5"	1.5"	1.5"	1.5"	1.5"	1.5"	1.5"
BB Height (G)	11.9"	11.9"	11"	11"	11.7"	11.7"	11.7"	11.7"
Standover	25.7"	27.7"	29.7"	30.7"	30.5"	31.7"	31"	31"
Crank Length	170mm	170mm	175mm	175mm	175mm	175mm	175mm	175mm
Stem Size	25/30mm	25/30mm	25/30.5mm	25/30.5mm	25/30.5mm	25/31mm	25/31mm	25/31mm

# KONA WORLD DISTRIBUTORS

- Australia \_ Groupe Sportif, 20 Harker Street, Burwood, Victoria 3125 TEL: 03 9888 9882  
Austria \_ Kona Europe, 14 Bis rue Honore Labande 98000 Monaco tel: (377) 97971860  
Belgium \_ Team Sporting Goods, Bredastraat 121, B-2060 Antwerpen tel: 3-226-91-45  
Canada \_ The Bicycle Group, 381 Railway Street, Vancouver, BC V6A 1A4 tel: 604-684-4933  
Denmark \_ Aage Kroll, 2625 Vallaensbaek, Jydskrogen 18, tel: 436-60066  
Ecuador \_ Tecno Cycle, Rancho Tamriz, 3-15/ Urena tel: 593-783-6876  
Estonia \_ Oxi Surfar, Aa 18, Tallinn 10111 tel: 26-440544  
Finland \_ Mountain Bike Keskus, Lauttasaarentie 54, 00200 Helsinki tel: 358-960-32710  
France \_ Kona Europe, 14 Bis rue Honore Labande 98000 Monaco tel: (377) 97971860  
Germany \_ Kona Europe, 14 Bis rue Honore Labande 98000 Monaco tel: (377) 97971860  
Holland \_ Kona Europe, 14 Bis rue Honore Labande 98000 Monaco tel: (377) 97971860  
Hungary \_ X-Factor, 1097 Budapest, Konyves Kalman krt. 12-14, tel: 1-456-1102  
Ireland \_ Second Level Sport, Clockhouse Lane, Feltham, TW14 8QA tel: (1784) 251000 www.secondlevelsport.com  
Israel \_ Harry Rick Enterprises, 168 Ilan-Gevird St, Tel-Aviv tel: 972-544-2123  
Italy \_ Kona Europe, 14 Bis rue Honore Labande 98000 Monaco tel: (377) 97971860  
Japan \_ Kona Japan, 1519-1 Yosayada, Sakai, Osaka 590-0104 tel: 81-722-30-2820  
Korea \_ Bumil Trading, 4504-2 KWIC, 159 Samsung-Dong, Kangnam-ku, Seoul tel: 2-551-6992  
Norway \_ Hard Rock, Grind Naeringspark 2, 1345 Osteras tel: 67-14-72-40  
Poland \_ Kona Europe, 14 Bis rue Honore Labande 98000 Monaco tel: (377) 97971860  
Portugal \_ Motor Dealer, Parque Ind. Europolis, Edif. Bruselas, calle 2. Bloque 4, nave 1, 28230 Las Rozas tel: 637-7097  
Russia \_ Ilion Itatarenko, 129301 Moscow, 2nd Fl, 7, B Galushkina Str. tel: 095-755-8194  
South Africa \_ Rock Trail Cycles, Box 1000, Hilton 3245, Kwazulu Natal tel: 11-914 4206  
Spain \_ Motor Dealer, Parque Ind. Europolis, Edif. Bruselas, calle 2. Bloque 4, nave 1, 28230 Las Rozas tel: 637-7097  
Sweden \_ Kona Europe, 14 Bis rue Honore Labande 98000 Monaco tel: (377) 97971860  
Switzerland \_ Chris Sports Systems, Lindauerstrasse 25, CH-8317 Tagelswangen tel: 52-3551484  
Thailand \_ P.S.G. Trading, 43/50 Moo 7, Samaedum, Bangkhuntein, Bangkok 10150 tel: 66-2-415-4150  
United Kingdom \_ Second Level Sport, Clockhouse Lane, Feltham, TW14 8QA tel: (1784) 251000 www.secondlevelsport.com

[http://database.konaworld.com/konain/dealer\\_search.cfm](http://database.konaworld.com/konain/dealer_search.cfm)



[www.konaworld.com](http://www.konaworld.com)

WILLO DEE LUX - NORTH SHORE PHOTO BY GARRY

CREDITS \_ PHOTOS BY JOHN GIBSON, THE KING, MALCOLM FERRON & MONTZAMBERT \_  
TEXT BY JOE & JANE \_  
DESIGN BY STEVE FODTE & KEVIN THORNTON \_  
THANKS MRS. BOURDON FOR ROBBY WE TRIED TO KEEP HIM OUT OF TROUBLE \_

KONA USA \_ 2455 Salashan, Ferndale, Washington, 98248 \_ Tel 360-366-0951