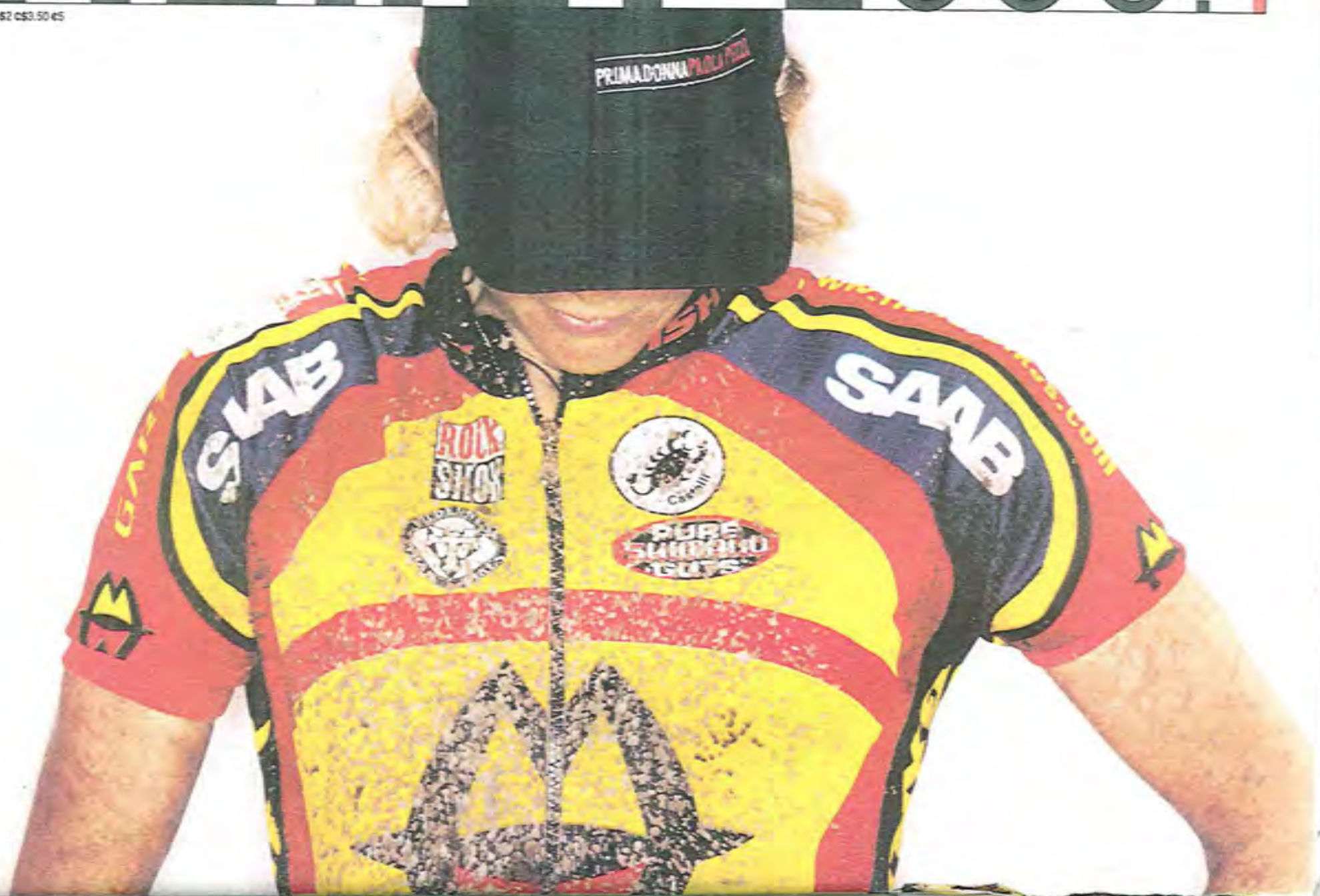


FISHER 2000.1

US\$2 US\$3.50 45





SUGAR 1

FULL SUSPENSION
CROSS COUNTRY
PROFESSIONAL

wheels
suspension
components

Bontrager Race Lite wheelsystem | WTB NanoRaptor tires
Rock Shox SID SL fork (80mm travel) | Rock Shox SID adjustable rear shock (216" travel)
Shimano XTR SGS rear derailleur | XT front derailleur + Rapidfire 9 speed shifters |
Avid SD 25 Magnesium brakes | Bontrager Race Lite crank | Time ATAC pedals

upgrades from SUGAR 2

Top of the line rear derailleur, brakes, crank and rear suspension

frame

6061 T6 double butted aluminum / carbon stays



size
color

SM | MD | LG | XL
Amarillo Yellow and Team Red

SUGAR 2

FULL SUSPENSION
CROSS COUNTRY
PROFESSIONAL

wheels
suspension
components

Bontrager Race wheelsystem | WTB NanoRaptor tires
Manitou Mars fork (80mm travel) | Cane Creek AD-10 rear shock (2 1/2" travel)
Shimano XT SGS rear derailleur | LX front derailleur + Rapidfire 9 speed shifters | Avid SD 20 brakes |
Bontrager Race crank | Time ATAC pedals

upgrades from SUGAR 1

Lighter suspension fork with external rebound and compression damping |
Tunable rear shock | Lighter weight wheelsystem | Time pedals

Frame

6061 T6 double butted aluminum



sizes
colors

SM | MD | LG | XL
Bob White





SUGAR 3

FULL SUSPENSION
CROSS COUNTRY
PROFESSIONAL

wheels
suspension
components

Bontrager Superstock wheelsystem | WTB NanoRaptor tires
Manitou SX fork (80mm travel) | Cane Creek AD-5 rear shock (216" travel)
Shimano XT 56G rear derailleur | LX front derailleur + Rapidfire 9 speed shifters | Avid SD 10 brakes |
Bontrager Race crank | Bontrager RE-1 pedals

upgrades from JOSHUA

Lighter, faster Sugar Frame | Lightweight air shock |
Clipless pedals | Smoother drivetrain | Lighter fork

frame

6061 T6 double butted aluminum



size
color

SM | MD | LG | XL
Team Red



SUPERCALIBER

upgraded from MT TRM

Lighter wheel system — less rotating weight | Lighter crank |
Lockout-equipped Manitou fork | Lighter magnesium brakes

Frame

6061 T6 double butted aluminum



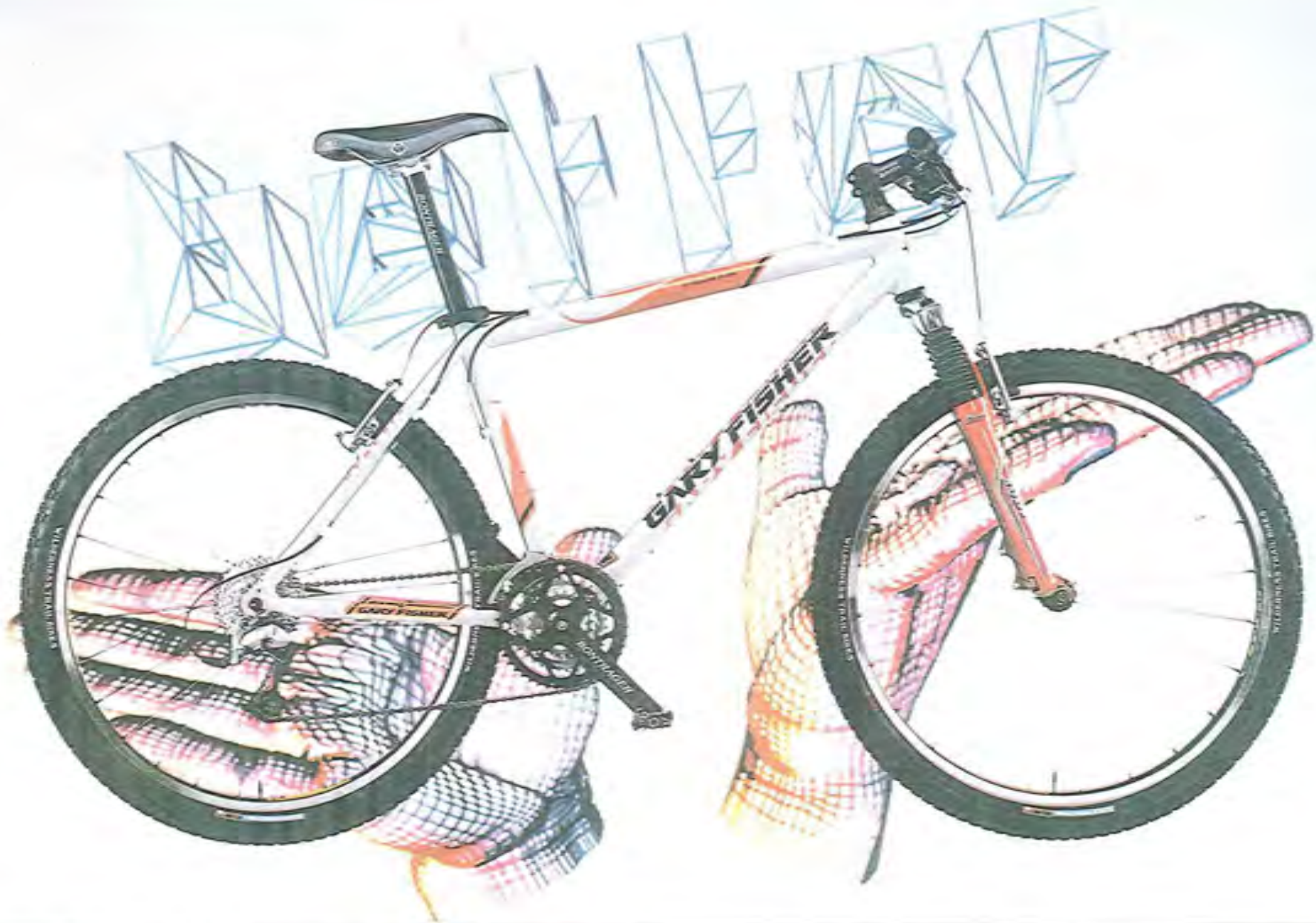
W H E E L S
C R O S S C O U N T R Y
P R O F E S S I O N A L

w h e e l s
s u s p e n s i o n
c o m p o n e n t s

Bontrager Race Lite wheelsystem | WTB NanoRaptor tires
Manitou Mars CL fork with lock out (80mm travel)
Shimano XTR 505 rear derailleur | XT front derailleur + Rapidfire 9 speed shifters |
Avid 50 25 Magnesium brakes | Bontrager Race Lite crank | Time ATAC pedals

s i z e s
c o l o r s

SM | MD | LG | XL
Amarillo Yellow and Team Red



PARAGON

HARDTAIL
CROSS COUNTRY
PROFESSIONAL

wheels
suspension
components

Bontrager Race wheelset system | WTB NanoRaptor tires
RockShox Judy Race fork (80mm travel)
Shimano XT SGS rear derailleur | LX front derailleur + Rapidfire 9 speed shifters | Avid SO 20 brakes |
Bontrager Race crank | Bontrager RE-1 pedals

upgrades from BIG SUR

Lighter, double-butted Professional Genesis Frame | Lighter wheels |
Easy-rolling race ready tires | Lighter fork | Lighter crank

Frame

6061 T6 double-butted aluminum



size
color

SM | MD | LG | XL
Bob White

MT TAM

M R D T R I L
C R O S S C O U N T R Y
P R O F E S S I O N N L

w h e e l s
s u s p e n s i o n
c o m p o n e n t s

Bontrager Race wheelsystem | WTB NanoRaptor tires
Manitou Mars C fork (80mm travel)
Shimano XTR SGS rear derailleur | XT front derailleur + Rapidfire 9 speed shifters | Avid SD 20 brakes |
Bontrager Race crank | Time ATAC pedals

upgrades from PARRAGON

Lighter fork with stiff carbon brake arch and TPC Damping system |
Light, ultra smooth XTR rear derailleur | Time pedals

frame

6061 T6 double butted aluminum



s i z e s
c o l o r s

SM | MD | LG | XL
Midnight and Light Blue



JOSHUA F3

FULL SUSPENSION
LONG TRAVEL
SUSPENSION

wheels
suspension
components

Bontrager Superstock wheelsystem | WTB VelociRaptor tires
RockShox Jett Race fork (75mm travel) | RockShox Deluxe adjust rear shock (110" travel)
Shimano LX 565 rear derailleur + Rapidfire 9 speed shifters | Deore front derailleur |
Linear pull brakes | Icon Obsidian crank

upgrades from JOSHUA F3

Lighter aluminum swingarm (21 speed drivetrain) | Lighter crank |
Lighter fork | Do-the-fly™ rear shock lockout | Lighter wheelsystem

Frame

6061 T6 butted aluminum



sizes
colors

SM | MD | LG
Team Red and Midnight



The Shuttle is not currently
in orbit

Updates once per minute



This web page has moved.
 Browser will automatically go to new address or [click here](#)

JOSHUA F4

FULL SUSPENSION
 LONG TRAVEL
 SUSPENSION

WHEELS
 SUSPENSION
 COMPONENTS

Bontrager Convair rims | Shimano Acera rear hub | WTB VelociRaptor tires
 RockShox Jett fork (85mm travel) | RockShox Deluxe adjust rear shock (110mm travel)
 Shimano LX SGS rear derailleur | Acera front derailleur + crank | Alivio Rapidfire 8 speed shifters |
 Linear pull brakes

SIZE
 COLORS

SM | MD | LG
 Midnight

upgrades from a hardtail

Fresh bump smoothing, full suspension design reduces fatigue,
 increases fun

frame

6061 T6 butted aluminum / cromoly swing arm



...and the bikes that bear his name.
 ...for ride quality, longevity and light weight in a straight gauge
 ...ests Geometry. Inside you'll find 6061 T6
 ...rest is the same.

X-CALIBER

REAR TRAIL
 LONG TRAVEL
 SUSPENSION

WHEELS
 SUSPENSION
 COMPONENTS
 SIZES
 COLORS

Bontrager Race Disc wheelsystem | WTB MotoRaptor tires
 Marzocchi Z3 Flylight fork (100mm travel)
 Shimano XTR SRS rear derailleur | LX front derailleur + Rapidfire 9 speed shifters |
 Hayes hydraulic disc brakes | Bontrager Race crank + RE-1 pedals
 SM | MD | LG | XL
 Orangrine

upgrades from 600 600 E 600
 Smoother suspension fork | Top of the line rear derailleur | Lighter rear hub |
 Lighter disc wheelsystem | Powerful hydraulic disc brakes | Digiplus pedals

Frame
 6061 T6 aluminum





HOO KOO E KOO

upgrades from HOO KOO

100 mm travel Rock Shox Judy XC fork | Disc brake stopping power |
Bigger, more aggressive tires

frame
6061 T6 aluminum

W H E E L
L O W E R T R A V E L
S U S P E N S I O N



w h e e l s
s u s p e n s i o n
c o m p o n e n t s

S M | M D | L S | X L
V i b r a R e d

Bontrager Superstack rear wheel + Convaire front rim | Disc-specific front hub | WTB MotoRaptor tires
RockShox Judy XC fork (100mm travel)
Shimano LX SGS rear derailleur + Rapidfire 9 speed shifters | Deane front derailleur |
Formula MD-1 mechanic disc front brake | Linear pull rear brake | Icon Obsidian crank

S M | M D | L S | X L
V i b r a R e d

BIG SUR

GENESIS HARDTIL
CROSS COUNTRY
COMPETITION

WHEELS
SUSPENSION
COMPONENTS

Bontrager Superstock wheelsystem | WTB RacingRaptor tires
Manitou SX fork (80mm travel)
Shimano XT SGS rear derailleur | Deore front derailleur | LX Rapidfire 9 speed shifters |
Avid SD 10 brakes | Bontrager Comp crank + RE-1 pedals

Upgrades from KR1781

Lighter fork with Manitou TPC equipped damping | Clipless pedals |
Smooth, fast XT rear derailleur | Powerful linear pull Avid brakes

Frame
6061 T5 aluminum



SIZE
COLORS

SM | MD | LG | XL
Metallic Blue





KAITAI

upgrades from RQUILA

Stronger, lighter 6061 T6 frame | Better riding Genesis Geometry |
Lighter fork | Lighter wheels

Frame

6061 T6 aluminum

GENESIS HARDTRAIL
CROSS COUNTRY
COMPETITION



wheels
suspension
componentry

sizes
colors

Bontrager Superstock wheelsystem | WTB Racing Raptor tires
RockShox Judy XC fork (80mm travel)
Shimano LX SGS rear derailleur | Deore front derailleur + 9 speed shifters |
Linear pull brakes | Icon Obsidian crank

XS | SM | MD | LG | XL
Midnight

AQUILA

HARDTAL
CROSS COUNTRY
COMPETITION

wheels
suspension
components

Bontrager Convair rims | Shimano Acera rear hub | WTB Velociraptor tires
RockShox Jett SL fork (75mm travel)
Shimano LX SGS rear derailleur | Deore front derailleur + 9 speed shifters |
Linear pull brakes | Icon Obsidian crank

upgrades from TASSAJARR

27 Speed drivetrain | New Icon Obsidian Crank |
Lighter Rock Shox Jett SL Suspension fork

Frame

7005 aluminum

size
colors

XS | SM | MD | LG | XL
Metallic Blue | XXX Orange





TASSAJARA

HARDBAIL
CROSS COUNTRY
COMPETITION

wheels
suspension
components

Bontrager Convair rims | Shimano Acera rear hub | WTB Velociraptor tires
Manitou Magnum fork (80mm travel)
Shimano LX SGG rear derailleur | Deore front derailleur + 8 speed shifters |
Linear pull brakes | Acera crank

XS | SM | MD | LG | XL
Metallic Silver | Acid Green

upgrades from MARLIN

LX rear derailleur | Plus, lighter weight Manitou Magnum fork |
Light and durable Bontrager rims | More aggressive tires

frame
7005 aluminum

MARLIN

H I P P O C R A T E S
C R O S S C O U N T R Y
R E C R E A T I O N

upgrades from WINDO

RockShox performance suspension fork with 49mm travel |
The clips and straps

Frame
7005 aluminum

wheels
suspension
componentry

Alloy rims + hubs | Hutchinson Chameleon tires
RockShox Jett fork (49mm travel)
Shimano Alivio rear derailleur | Altus front derailleur + crank | EZ Fire 33 8 speed shifters |
Linear pull brakes

s i z e s
c o l o r s

XS | SM | MD | LG | XL | XXL
Metallic Blue | Team Red





WAHOO

W H O O
C R O S S C O U N T R Y
R E L I E N T I O N

upgrades from HAMBER

Lighter weight, high performance aluminum frame | 34 speed drivetrain

Frame

7005 aluminum

wheels
frame
components

Alloy rims + hubs | Hutchinson Chameleon tires

Plain gauge chromoly steel

Shimano Alivio rear derailleur | Altus front derailleur + crank | EZ Fire 33 8 speed shifters |
Linear pull brakes

sizes
colors

XS | SM | MD | LG | XL | MD-Stepthru

Metallic Red | Midnight

MAMBA

ALL-TERRAIN
CITY / PATH
RECREATION

wheels
suspension
components

Alloy rims + hubs | Hutchinson Chameloon tires
Sync 288 fork (63mm travel)
Shimano Acera rear derailleur | Altus front derailleur + crank | EZ Fire 28 7 speed shifters |
Linear pull brakes

s i z e s

XS | SM | MD | LG | XL

c o l o r s

Metallic Silver | Y2K Orange

upgrades from GITCHE GUMEE

Shock absorbing Sync suspension fork |
Stronger, lighter full cromoly mainframe

frame

Cromoly steel mainframe / High tensile stays



GITCHE GUMEE

ALL-TERRAIN
CITY / PATH
RECREATION

wheels
forks
components

Alloy rims + hubs | Hutchinson Chameloon tires
Plain gauge cromoly steel
Shimano Acera rear derailleur | Altus front derailleur + crank | EZ Fire 28 8 speed shifters |
Linear pull brakes

s i z e s

XS | SM | MD | LG | XL | MD-Stepthrough

c o l o r s

Metallic Green | Team Red

upgrades from a wall-mart bike

Quality, corrosion resistant components | Professional assembly |
Limited lifetime Fisher frame warranty | Multiple sizes available

frame

High tensile steel / Cromoly seat tube

hybrids



UTOPIA

H Y B R I D
C I T Y / P R T W
R E C R E A T I O N

upgrades from **NIRVANA**

Shock absorbing suspension fork |
Lighter, more durable Shimano LX rear derailleur

frame
7005 aluminum

wheels
suspension
components

Bontrager Comp 1 front hub + Comp 2 rear hub + Fairlane rims | Inverted tread street tires
RockShox Ruby metro fork | Suspension seatpost
Shimano LX 565 rear derailleur | Nexave 401 front derailleur + crank |
GripShift Centera 8 speed shifters | Linear pull brakes

size
color

SM | MD | LG | XL | MD-Stepthrough
Metallic Blue

NIRVANA

H Y B R I D
C I T Y / P R T W
R E C R E A T I O N

upgrades from **ZEBRANO**

Greater 24 speed gear range | Smoother shifting drivetrain

frame
7005 aluminum

wheels
suspension
components

Shimano Acera rear hub | Bontrager Fairlane rims | Inverted tread street tires
Suspension seatpost
Shimano Alivio rear derailleur | Nexave 301 front derailleur + crank |
GripShift Centera 8 speed shifters | Linear pull brakes

size
color

XS | SM | MD | LG | XL | MD-Stepthrough
Midnight

ZEBRANO

H Y B R I D
C I T Y / P R T W
R E C R E A T I O N

upgrades from a **wall-mart bike**

Quality, serviceable components | Professional assembly |
Lifetime Lifetime Fisher frame warranty | Multiple sizes available

frame
7005 aluminum

wheels
suspension
components

Shimano Acera rear hub | Bontrager Fairlane rims | Inverted tread street tires
Suspension seatpost
Shimano C201 MegaRange rear derailleur | Nexave 301 front derailleur |
Shimano C102 7 speed shifters + crank | Linear pull brakes

size
color

SM | MD | LG | XL | MD-Stepthrough
Metallic Red

MTJAM

14½" frame | 24" wheels | 21 speeds



14½" frame | 24" wheels | 21 speeds

JOSHUA24

From the Father of the Mountain Bike comes a completely New line of bikes for the age-challenged. **New frame designs. New sizes. New components. New kickstands. New streamers. New high performance training wheels** that substantially increase a young rider's cognitive development and may one day lead to a higher standing in the socio-economic New World Order.*

*Or not.



COSMO BOYS

11½" frame | 20" wheels | 6 speeds



TYRO GIRLS



14½" frame | 24" wheels | 21 speeds

TYRO BOYS

14½" frame | 24" wheels | 21 speeds



COSMO

GIRLS

11½" frame | 20" wheels | 6 speeds

COMET

BOYS

11½" frame | 20" wheels | 1 speed



11½" frame | 20" wheels | 1 speed

COMET

GIRLS



**GAMMA
RAY**

BOYS

16" wheels | 1 speed



27



SUNSPOT

GIRLS

12" wheels | 1 speed



SUNSPOT

BOYS

12" wheels | 1 speed

**GAMMA
RAY**

GIRLS

16" wheels | 1 speed



Whuzzit got?

	SUGRR1	SUGRR2	SUGRR3	SUPERCALIBER	MT TRM	PRRRGN	JOSHURF3	JOSHURF4	X-CALIBER	HDD KOD E HDD
model	SUGRR1	SUGRR2	SUGRR3	SUPERCALIBER	MT TRM	PRRRGN	JOSHURF3	JOSHURF4	X-CALIBER	HDD KOD E HDD
price	8	9	9	12	13	13	17	17	18	18
color	Amarillo Yellow and Team Red	Bob White	Team Red	Amarillo Yellow and Team Red	Midnight and Light Blue	Bob White	Team Red and Midnight	Midnight	Orange/Red	Vibra Red
size	SM MD LG XL	SM MD LG XL	SM MD LG XL	SM MD LG XL	SM MD LG XL	SM MD LG XL	SM MD LG	SM MD LG	SM MD LG XL	SM MD LG XL
main frame	6061 T6 double butted aluminum Genesis Geometry	6061 T6 double butted aluminum Genesis Geometry	6061 T6 double butted aluminum Genesis Geometry	6061 T6 double butted aluminum Genesis Geometry	6061 T6 double butted aluminum Genesis Geometry	6061 T6 double butted aluminum Genesis Geometry	Oversized ovalized butted cross section 6061 T6 aluminum Genesis Geometry	Oversized ovalized butted cross section 6061 T6 aluminum Genesis Geometry	6061 T6 aluminum Genesis Geometry	6061 T6 aluminum Genesis Geometry
rear triangle	6061 T6 aluminum carbon seat stays	6061 T6 aluminum carbon seat stays	6061 T6 aluminum carbon seat stays	6061 T6 aluminum Genesis Geometry	6061 T6 aluminum Genesis Geometry	6061 T6 aluminum Genesis Geometry	6061 T6 aluminum Adjustable geometry	Cromoly steel	6061 T6 aluminum Genesis Geometry	6061 T6 aluminum Genesis Geometry
fork	RockShox SID SL 80mm travel	Manitou Mars 80mm travel	Manitou SX 80mm travel	Manitou Mars CL 80mm travel Lock out	Manitou Mars C 80mm travel	RockShox Judy Race 80mm travel	RockShox Jet Race 75mm travel alloy steerer	RockShox Jet 65mm travel	Marzocchi Z3 Flylight 100mm travel	RockShox Judy XC 100mm travel
rear shock	RockShox SID Adjust 216" travel	Cane Creek AD-10 216" travel	Cane Creek AD-5 216" travel				RockShox Deluxe Adjust 216" travel	RockShox Deluxe 216" travel		
headset	WTB Momentum Comp GreaseGuard	Dia-Compe SAS Aheadset alloy	Dia-Compe SAS Aheadset alloy	WTB Momentum Comp GreaseGuard	Dia-Compe SAS Aheadset alloy	Dia-Compe SAS Aheadset alloy	Dia-Compe Aheadset	Dia-Compe Aheadset	Dia-Compe SAS Aheadset alloy	Dia-Compe Aheadset
bottom bracket	Shimano UN72	Shimano UNS2	Shimano UNS2	Shimano UN72	Shimano UNS2	Shimano UNS2	Shimano LP27	Shimano LP27	Shimano UNS2	Shimano LP27
crank	Bontrager Race Lite 44/32/22	Bontrager Race 44/32/22	Bontrager Race 44/32/22	Bontrager Race Lite 44/32/22	Bontrager Race 44/32/22	Bontrager Race 44/32/22	Icon Obsidian 44/32/22	Shimano Acera 42/32/22	Bontrager Race 44/32/22	Icon Obsidian 44/32/22
pedals	Time ATAC clipless	Time ATAC clipless	Bontrager RE-1 clipless	Time ATAC clipless	Time ATAC clipless	Bontrager RE-1 clipless	Alloy ATB clipless adaptable	ATB alloy cage w/ clips and straps	Bontrager RE-1 clipless	Alloy ATB clipless adaptable
front derailleur	Shimano XT	Shimano LX	Shimano LX	Shimano XT	Shimano XT	Shimano LX	Shimano Deore	Shimano Acera	Shimano LX	Shimano Deore
rear derailleur	Shimano XTR SGS	Shimano XT SGS	Shimano XT SGS	Shimano XTR SGS	Shimano XTR SGS	Shimano XT SGS	Shimano LX SGS	Shimano LX SGS	Shimano XTR SGS	Shimano LX SGS
shifters	Shimano XT	Shimano LX	Shimano LX	Shimano XT	Shimano XT	Shimano LX	Shimano LX	Shimano Alivio	Shimano LX	Shimano LX
cassette	Shimano XT 9 speed 11-34	Shimano LX 9 speed 11-32	Shimano LX 9 speed 11-32	Shimano XT 9 speed 11-34	Shimano LX 9 speed 11-32	Shimano LX 9 speed 11-32	Shimano HG50 9 speed 11-32	Shimano HG50 8 speed 11-30	Shimano LX 9 speed 11-32	Shimano HG50 9 speed 11-32
chain	Shimano HG72	Shimano HG72	Shimano HG72	Shimano HG72	Shimano HG72	Shimano HG72	Shimano HG72	IG71	Shimano HG72	Shimano HG72
disc								Alloy quick release 130mm	Bontrager Race Disc	Disc Compatible Alloy 132 hole

	BIG SUR	FRITZ	ROULR	TRASSURRA	MARLIN	WAHOO	HAMBA	GITCHE GUMEE	UTOPIA	NIRVANA	ZEBRAND	
	20	20	24	24	25	25	26	28	28	28	26	frame
	20	20	24	24	25	25	26	28	28	28	26	size
	20	20	24	24	25	25	26	28	28	28	26	color
	20	20	24	24	25	25	26	28	28	28	26	size
	20	20	24	24	25	25	26	28	28	28	26	main frame
	20	20	24	24	25	25	26	28	28	28	26	rear triangle
	20	20	24	24	25	25	26	28	28	28	26	fork
	20	20	24	24	25	25	26	28	28	28	26	rear shock
	20	20	24	24	25	25	26	28	28	28	26	headset
	20	20	24	24	25	25	26	28	28	28	26	bottom bracket
	20	20	24	24	25	25	26	28	28	28	26	crown
	20	20	24	24	25	25	26	28	28	28	26	pedals
	20	20	24	24	25	25	26	28	28	28	26	front derailleur
	20	20	24	24	25	25	26	28	28	28	26	rear derailleur
	20	20	24	24	25	25	26	28	28	28	26	shifters
	20	20	24	24	25	25	26	28	28	28	26	cassette
	20	20	24	24	25	25	26	28	28	28	26	chain

Shimano HG72	Shimano HG72	Shimano HG72	IG-compatible	IG-compatible	IG-compatible	IG-compatible	IG-compatible	IG-compatible	IG3t	HG50	HG50	
Bontrager Superstock wheelsystem	Bontrager Superstock wheelsystem	Alloy sealed quick release	Alloy sealed quick release	Alloy sealed quick release	Alloy sealed quick release	Alloy sealed quick release	Alloy sealed quick release	Alloy sealed quick release	Bontrager Comp 1 quick release	Alloy silver quick release	Alloy silver quick release	chain
		Bontrager Convair 32 hole	Bontrager Convair 32 hole	Alloy 32 hole	Alloy 32 hole	Alloy 32 hole	Alloy 32 hole	Alloy 32 hole	Bontrager Fairlane 32 hole	Bontrager Fairlane 32 hole	Bontrager Fairlane 32 hole	front axle
		Stainless steel 14 Gauge	Stainless steel 14 Gauge	Stainless steel 14 Gauge	Stainless steel 14 Gauge	Stainless steel 14 Gauge	Stainless steel 14 Gauge	Stainless steel 14 Gauge	Stainless steel 14 Gauge	Stainless steel 14 Gauge	Stainless steel 14 Gauge	front fenders
Bontrager Superstock wheelsystem	Bontrager Superstock wheelsystem	Shimano Acera quick release	Shimano Acera quick release	Alloy sealed quick release	Alloy sealed quick release	Alloy sealed quick release	Alloy sealed quick release	Alloy sealed quick release	Bontrager Comp 2 quick release	Shimano Acera quick release	Shimano Acera quick release	rear hub
		Bontrager Convair ASYM 32 hole	Bontrager Convair ASYM 32 hole	Alloy 32 hole	Alloy 32 hole	Alloy 32 hole	Alloy 32 hole	Alloy 32 hole	Bontrager Fairlane 32 hole	Bontrager Fairlane 32 hole	Bontrager Fairlane 32 hole	rear rim
		Stainless steel 14 Gauge	Stainless steel 14 Gauge	Stainless steel 14 Gauge	Stainless steel 14 Gauge	Stainless steel 14 Gauge	Stainless steel 14 Gauge	Stainless steel 14 Gauge	Stainless steel 14 Gauge	Stainless steel 14 Gauge	Stainless steel 14 Gauge	rear fenders
WTB RacingRaptor 47/44	WTB RacingRaptor 47/44	WTB VeloC Raptor 2.1	WTB VeloC Raptor 2.1	Hutchinson Chameleon	Hutchinson Chameleon	Hutchinson Chameleon	Hutchinson Chameleon	Hutchinson Chameleon	Inverted Tread Street tire	Inverted Tread Street tire	Inverted Tread Street tire	front tire
WTB RacingRaptor 44/50	WTB RacingRaptor 44/50	WTB VeloC Raptor 44/50	WTB VeloC Raptor 44/50	Hutchinson Chameleon	Hutchinson Chameleon	Hutchinson Chameleon	Hutchinson Chameleon	Hutchinson Chameleon	Inverted Tread Street tire	Inverted Tread Street tire	Inverted Tread Street tire	rear tire
Avid Single Digit 10 linear pull	Forged alloy linear pull	Forged alloy linear pull	Forged alloy linear pull	Alloy linear pull	Alloy linear pull	Alloy linear pull	Alloy linear pull	Alloy linear pull	Forged alloy linear pull	Forged alloy linear pull	Forged alloy linear pull	front brake
Avid Single Digit 10 linear pull	Forged alloy linear pull	Forged alloy linear pull	Forged alloy linear pull	Alloy linear pull	Alloy linear pull	Alloy linear pull	Alloy linear pull	Alloy linear pull	Forged alloy linear pull	Forged alloy linear pull	Forged alloy linear pull	rear brake
Shimano LX	Linear pull alloy body and lever	Linear pull alloy body and lever	Alloy 2 finger	Shimano alloy 2 finger	Shimano alloy 2 finger	Shimano alloy 2 finger	Shimano alloy 2 finger	Shimano alloy 2 finger	Linear pull alloy body and lever	Linear pull alloy body and lever	Shimano C-102	brake levers
Bontrager Superstock	Bontrager Cruiser	Aluminum riser	Aluminum riser	Aluminum riser	Aluminum riser	Riser	Riser	Riser	Riser	Riser	Riser	handlebar
Bontrager Comp	Direct connect alloy	Direct connect alloy	Direct connect 15° rise	Direct connect 15° rise	Direct connect 15° rise	Direct connect 15° rise	25° rise	Alloy adjustable rise	Alloy adjustable rise	Alloy adjustable rise	Alloy adjustable rise	stem
WTB Dual Compound	WTB Dual Compound	WTB Dual Compound	Serfas dual density	Serfas dual density	Serfas dual density	Serfas dual density	Serfas dual density	Serfas dual density	Dual density	Dual density	Dual density	grips
WTB SST.X	WTB SST.X	WTB SST.X	WTB SST.X	Fisher Performance Comfort	Fisher Performance Comfort	Fisher Performance Comfort	Fisher Performance Comfort	Fisher Performance Comfort	Fisher Supersoft	Fisher Supersoft	Fisher Supersoft	saddle
Alloy micro-adjust	Alloy micro-adjust	Alloy micro-adjust	Alloy micro-adjust	Alloy micro-adjust	Alloy micro-adjust	Alloy micro-adjust	Alloy micro-adjust	Alloy micro-adjust	Suspension alloy	Suspension alloy	Suspension alloy	seatpost
Replaceable derailleur hanger	Replaceable derailleur hanger	Replaceable derailleur hanger	Replaceable derailleur hanger	Replaceable derailleur hanger	Replaceable derailleur hanger	Replaceable derailleur hanger	Replaceable derailleur hanger	Replaceable derailleur hanger	Replaceable derailleur hanger	Replaceable derailleur hanger	Replaceable derailleur hanger	weighting wheel

angles

standover	SO	*	The vertical distance from the ground to the point on the top tube where you straddle the bike.
effective top tube	TT	*	The horizontal measure from the center of the headset to the center of the seatpost.
cockpit length	CP	*	The horizontal measure from the center of the handlebar to the center of the seatpost.
minimum cockpit	minCP	*	The shortest the cockpit can be made by changing the stem to the shortest one available.
maximum cockpit	maxCP	*	The longest the cockpit can be made by changing the stem to one which is 30mm longer than original.
stem length	SL	mm	The original stem; measured from the center of the steerer tube to the center of the handlebar.
crank length	CL	mm	The distance from the center of the bottom bracket to the center of the pedal axle.
headtube length	HTL	mm	The distance between the upper and lower headset.
head angle	HA	°	The angle of headtube to the ground.
seattube angle	STA	°	The angle of seattube to the ground.
chainstay length	CSL	mm	The distance from the center of the bottom bracket to the center on the rear axle.
bottom bracket height	BBH	mm	The vertical distance from the center of the bottom bracket to the ground.
bottom bracket drop	BBD	mm	The vertical distance the bottom bracket is below an imaginary horizontal line drawn through the axles.
wheelbase	WB	mm	The distance between the axles.
center to top	CT	*	The distance from the center of the bottom bracket to the top of the seat tube.
inseam range	I	*	If your inseam is within this range, this size of bike should fit you.

You need plenty of clearance to be able to control the bike in all terrain.

The most important measurement when buying a bike, because it cannot be changed.

This is where you spend your time. (The next two measurements show how it can be adjusted.)

A stem which is 30mm longer than original is the maximum recommended to retain optimum handling.

A rider with long legs can benefit from longer cranks.

Affects how high your handlebar is relative to your saddle.

Tailored to optimize steering precision on each frame size.

Tailored to optimize power transmission on each frame size.

Expresses clearance of the frame over obstacles.

The greater the bottom bracket drop, the lower the rider's center of gravity.

Tailored to optimize weight distribution on each frame size.

Because some people still feel they need to know.



model	sugars																				professional and long-travel handle				jackets			competition handle Big Sur / Kibai					competition handle Aquila / Tassajara / recreation handle Martin				
	SM	MD	LG	XL	SM	MD	LG	XL	SM	MD	LG	XS	SM	MD	LG	XL	XS	SM	MD	LG	XL	XXL															
shoulder	27.21	27.67	28.10	28.49	27.57	29.17	30.20	31.88	25.67	25.67	25.67	25.91	27.57	29.17	30.20	31.88	25.43	27.60	29.21	30.29	31.89	34.02															
effective top hole	22.90	23.94	24.72	25.46	22.90	23.94	24.72	25.47	22.71	23.90	25.51	21.70	22.90	23.94	24.72	25.47	21.46	22.36	23.07	23.78	24.48	25.20															
cockpit length	CP	24.84	26.49	27.85	28.60	24.84	26.49	27.85	28.60	24.05	26.43	28.42	23.03	24.84	26.49	27.85	28.60	22.41	23.80	24.99	26.18	26.89	28.08														
minimum cockpit	minCP	24.29	25.32	26.68	27.13	24.26	25.32	26.68	27.15	24.05	25.27	27.46	23.03	24.26	25.32	26.68	27.15	22.41	23.31	24.02	24.73	25.44	26.15														
maximum cockpit	maxCP	26.30	27.21	28.51	29.26	26.00	27.21	28.51	29.26	25.22	27.15	29.29	24.20	26.00	27.21	28.51	29.26	23.27	24.78	25.96	27.15	27.84	29.05														
stem length	mm	75	90	105	105	75	90	105	105	75	90	105	60	75	90	105	105	60	75	90	105	105	105														
crack length	mm	170	175	175	175	175	175	175	175	170	175	175	170	175	175	175	175	170	170	170	170	170	170														
headtube length	mm	90	105	125	145	90	105	125	145	115	115	125	90	90	105	125	145	105	125	145	145	160	225														
head angle	HA	71	71°a	71°a	71°a	71	71°a	71°a	71°a	70°a	71	71	70°a	70°a	71°a	71°a	71°a	70°a	71	71°a	71°a	71°a	72														
seat tube angle	SA	73°a	73°a	73°a	73°a	73°a	73°a	73°a	73°a	74	73°a	73	74°a	73°a	73°a	73°a	73°a	74°a	74	74	73°a	73°a	73														
chainstay length	mm	415	415	415	415	412	412	412	412	412	412	412	412	412	412	412	412	415	415	415	415	415	415														
bottom bracket height	mm	303.4	303.4	303.4	303.4	292.1	292.1	292.1	292.2	301.0	303.5	304.1	288.14	293.24	293.24	293.24	293.24	288	291	295	295	295	295														
bottom bracket drop	mm	29.4	29.4	29.4	29.4	39.74	39.74	39.74	39.74	27.1	27.1	27.1	44.84	39.74	39.74	39.74	39.74	45	42	38	38	38	38														
wheelbase	mm	1,055.1	1,077.1	1,097.4	1,117.0	1,060.9	1,075.9	1,091.4	1,107.9	1,058	1,078	1,115	1,031.5	1,060.9	1,075.9	1,091.4	1,107.9	1,027	1,027	1,052	1,045	1,085	1,092														
center to top	mm	15.57	17.57	19.07	21.07	15.57	17.57	19.07	21.07	16	18	21	13.07	15.57	17.57	19.07	21.07	12.74	15.75	17.74	19.25	21.22	23.74														
bottom range		29.21-32.07	29.67-34.10	30.10-36.12	30.49-38.78	29.57-32.07	31.17-34.10	32.20-36.12	33.89-38.78	27.67-30.17	27.67-32.57	27.67-34.54	26.91-30.41	29.57-32.07	31.17-34.10	32.20-36.12	33.89-38.78	26.91-30.41	29.57-32.07	31.17-34.10	32.20-36.12	33.89-38.78	36.02-40.92														

model	recreation handle Wilco						recreation handle Mamba					recreation handle Gicche / Sumee / Piranha					hybrids							
	XS	SM	MD	LG	XL	MD-S	XS	SM	MD	LG	XL	XS	SM	MD	LG	XL	MD-S	XS	SM	MD	LG	XL	MD-S	
shoulder	25.43	27.60	29.21	30.39	31.89	34.02	25.43	28.39	29.57	30.58	31.81	25.43	27.60	29.21	30.39	31.89	34.02	25.76	26.54	28.77	30.28	32.18	33.72	
effective top hole	21.46	22.36	23.07	23.78	24.48	25.20	21.14	21.81	21.97	22.95	23.50	21.46	22.36	23.07	23.78	24.48	25.20	21.19	21.41	21.58	22.22	22.89	21.54	
cockpit length	CP	22.41	23.60	24.99	25.18	26.89	28.08	23.04	23.73	24.37	25.05	25.90	22.41	23.80	24.99	26.18	26.89	28.08	22.41	23.83	24.78	25.72	23.38	34.79
minimum cockpit	minCP	22.41	23.31	24.80	24.73	25.44	26.15	23.06	23.73	23.99	24.87	25.42	22.41	23.31	24.02	24.73	25.44	26.15	22.41	23.38	24.33	25.27	23.38	34.33
maximum cockpit	maxCP	23.27	24.74	25.96	27.15	27.84	29.08	24.03	24.70	25.34	26.32	26.87	23.27	24.74	25.96	27.15	27.84	29.08	23.22	24.74	25.68	26.63	24.29	25.68
stem length	mm	60	75	90	105	105	90	90	90	105	120	60	75	90	105	105	105	90	110	110	110	110	90	
crack length	mm	170	170	170	170	170	170	170	170	170	170	170	170	170	170	170	170	170	170	175	175	175	175	170
headtube length	mm	105	125	145	165	185	225	105	125	145	165	185	105	125	145	165	185	225	90	90	105	105	125	125
head angle	HA	70°a	71	71°a	71°a	71°a	72	70°a	71	71°a	71°a	71°a	70°a	71	71°a	71°a	71°a	72	70	70	70°a	70°a	71°a	70°a
seat tube angle	SA	74°a	74	74	73°a	73°a	73	74°a	74	74	73°a	73°a	74°a	74	74	73°a	73°a	74°a	74	74	73	73	74	74
chainstay length	mm	415	415	415	415	415	415	420	420	420	420	420	415	415	415	415	415	415	445	445	445	445	445	445
bottom bracket height	mm	288	291	295	295	295	295	288	291	295	295	295	288	291	295	295	295	295	277	277	277	277	277	277
bottom bracket drop	mm	45	42	38	38	38	38	45	42	38	38	38	45	42	38	38	38	38	65	65	65	65	65	65
wheelbase	mm	1,021	1,037	1,052	1,045	1,085	1,092	1,018	1,028	1,039	1,050	1,045	1,021	1,037	1,052	1,045	1,085	1,092	1,085	1,058	1,056	1,042	1,069	1,058
center to top	mm	12.76	15.75	17.74	19.25	21.22	23.74	12.99	17.09	18.31	19.57	21.04	12.76	15.75	17.74	19.25	21.22	23.74	13.80	15.80	17.58	20.00	22.5	17.50
bottom range		26.91-30.41	29.57-32.07	31.17-34.10	32.20-36.12	33.89-38.78	34.10	27.63-29.93	30.39-32.89	31.57-34.50	32.55-36.47	33.81-38.71	26.91-30.41	29.57-32.07	31.17-34.10	32.20-36.12	33.89-38.78	34.10	27.61-29.91	29.21-31.71	30.95-34.87	31.83-35.75	33.73-37.65	26.22-31.12