

1999



CANNONDALE



Mario Cipollini of the Saeco/Cannondale pro road team celebrating a stage win at the 1998 Giro d'Italia.



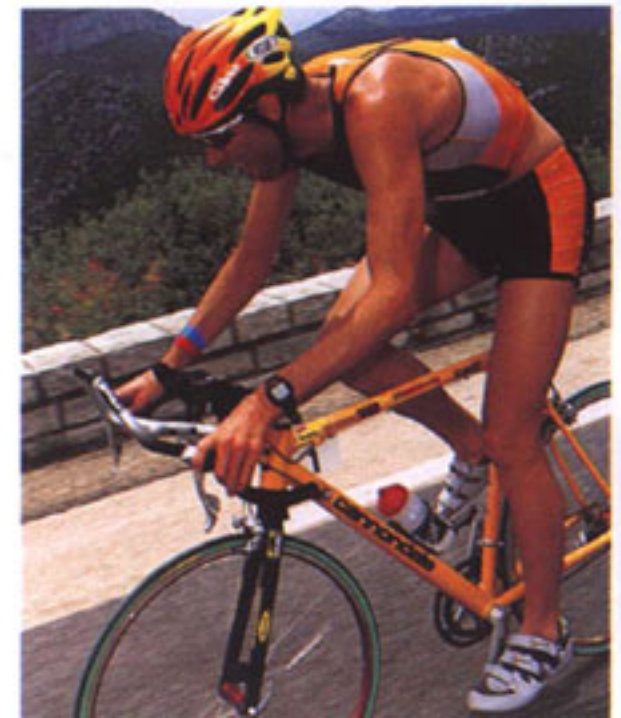
Jimena Florit-Juarez of Cannondale's Team HeadShok.



The most dominant team in women's cycling, the Saeco/Timex road team accumulated more than 50 victories in a single season.



Four-time ITU World Triathlon Champion Simon Lessing aboard a Cannondale Silk Road.



Cadel Evans of the Volvo/Cannondale mountain bike racing team en route to victory at the 1998 Silves, Portugal, World Cup race.

RACING

MOST BIKE COMPANIES SPONSOR RACE TEAMS AS PART OF A MARKETING STRATEGY AIMED AT CONVINCING YOU THAT THEIR PRODUCTS ARE PERFORMANCE-ORIENTED. NOT SO AT CANNONDALE. **OUR 50+ PRO RACERS ARE OUR RESEARCH & DEVELOPMENT PARTNERS.** SHARING OUR PASSION FOR SPEED AND IMPROVEMENT, **OUR RACERS PROVIDE OUR ENGINEERS WITH FEEDBACK AND INSIGHTS TO SPARK RADICAL NEW IDEAS.** AS THOSE IDEAS BECOME REALITIES – VIA THE INNOVATIVE, FLEXIBLE MANUFACTURING SYSTEM AT OUR PENNSYLVANIA FACTORY – OUR ATHLETES CONDUCT THE GRUELING ‘BATTLEFIELD’ TESTING THAT FORGES PROTOTYPES INTO FINISHED CANNONDALE DESIGNS.

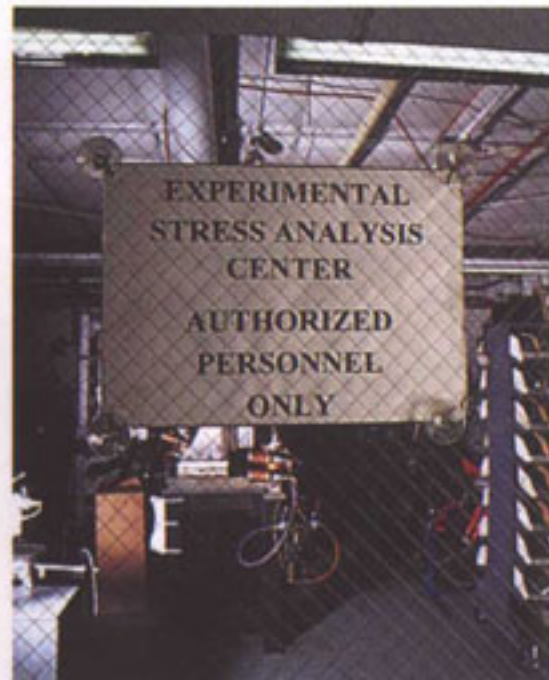


TESTING

WE PUT OUR BIKES TO EVERY CONCEIVABLE TEST, BUT THE Q-LAB AT OUR PENNSYLVANIA FACTORY IS PARTICULARLY BRUTAL. OUR ENGINEERS OUTFIT BIKES WITH COMPUTERIZED DATA-ACQUISITION EQUIPMENT, AND THEN GIVE THEM A FIERCE 'REAL-WORLD' THRASHING. USING THE COLLECTED DATA AS A BENCHMARK, WE THEN SUBJECT FRAMES, FORKS AND COMPONENTS TO SIMILAR LOADS ON AUTOMATED TESTING MACHINES FOR THE EQUIVALENT OF 25,000 MILES AND TEN YEARS OF USE. THE RESULTING DATA IS ANALYZED THROUGH A SOPHISTICATED STATISTICAL PROCESS DEVELOPED BY THE AEROSPACE INDUSTRY, AND EACH FRAME, FORK, AND COMPONENT IS EITHER APPROVED OR REJECTED. NO OTHER BIKE COMPANY MATCHES OUR DILIGENCE, SO ASK BEFORE YOU BUY: HAS THIS BIKE AND ITS COMPONENTS BEEN TESTED? TO WHAT STANDARDS? BY WHOM?

Our new CAAD4 road frame is tested at the famed Pininfarina wind tunnel in Turin, Italy.

We've invested more than \$2,000,000 in the Q-Lab testing facility at our Bedford, Pennsylvania, factory.



Electronic field-data acquisition aboard a specially equipped Cannondale Super V Raven.



In preparation for the 1998 Tour de France, Ivan Gotti of the Saeco/Cannondale pro road team perfects his time trial equipment and form at Italy's Pininfarina wind tunnel.



Staffed by ten engineers and technicians, our Q-Lab testing facility is in action three shifts each day.



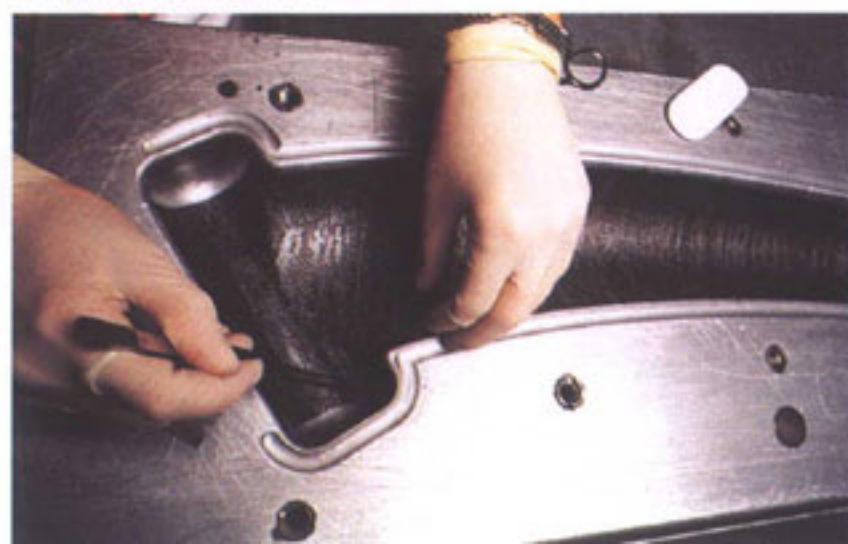


CCR

Steve Metz, Cannondale's Bicycle Product Manager.



The high-performance Super V Raven has won awards from both Design News and I.D. Magazine for its innovative carbon fiber/aluminum construction.




"Cannondale has single-handedly rewritten the rules of what to expect from a bicycle company." – Mountain Bike On-Line, on Cannondale's new motocross motorcycle.



Two-time defending Women's World Cup Downhill Champion Missy Giove of the Volvo/Cannondale mountain bike racing team.





The sophisticated Super V DHF downhill bike powered Missy "The Missile" Giove to her second consecutive overall title in the Grundig/U.C.I. World Cup Downhill Series.

EATING

REDEFINING THE STATE-OF-THE-ART IN BICYCLE DESIGNS REQUIRES AN INTIMATE KNOWLEDGE OF THE SPORT. **WE HIRE OUR CUSTOMERS;** PEOPLE WITH A BURNING PASSION FOR CYCLING. YOU DON'T BORE CREATIVE PEOPLE LIKE THAT WITH MARKET RESEARCH OR FOCUS-GROUP REPORTS. **YOU EMPOWER THEM WITH THE KNOWLEDGE THAT THERE ARE NO LIMITS:** IF THEY'RE UNIMPRESSED WITH THE AVAILABLE SUSPENSION FORKS, YOU LET THEM CREATE ONE THAT'S BETTER. IF BRAKING TECHNOLOGY SEEMS ARCHAIC, YOU SPUR THEM TO REDEFINE IT. YOU GIVE THEM SOPHISTICATED CAD (COMPUTER-AIDED DESIGN) COMPUTERS HARD-WIRED TO A FACTORY WITH 'TURN-ON-A-DIME' FLEXIBILITY. AND YOU MARVEL AS A BIKE FANATIC/ENGINEER'S IDEAS ARE CONVERTED INTO A TWO-WHEELED DREAM...



IMPROV

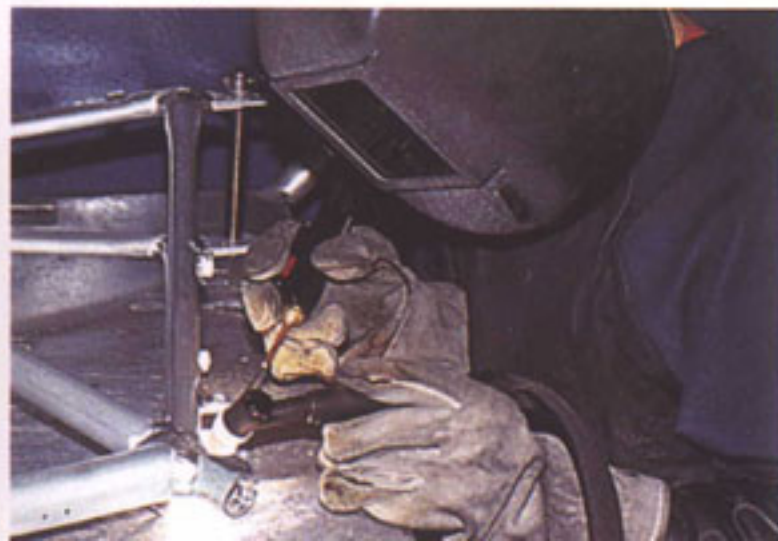
DID YOU KNOW THAT MOST BIKE COMPANIES DON'T MAKE ALL OF THEIR OWN BIKES? INSTEAD THEY BUY BIKES FROM HUGE MEGA-FACTORIES IN THE FAR EAST THAT CHURN OUT BIKES FOR MULTIPLE BRANDS. IT'S A CHEAPER AND EASIER APPROACH, BUT IT COMES AT A PRICE: YOU SIMPLY CAN'T INNOVATE IF YOU'RE LOCKED INTO SOME RIGID MANUFACTURING SYSTEM LOCATED HALF-WAY AROUND THE WORLD. EVERY CANNONDALE IS HAND-CRAFTED BY OUR OWN EMPLOYEES IN BEDFORD, PENNSYLVANIA. OUR PATENTED MANUFACTURING PROCESS – COMPLETE WITH COMPUTER-GUIDED LASERS AND PLASMA CUTTERS, CNC-MILLING MACHINES, AND THE INDUSTRY'S FINEST CRAFTSMEN – LETS US TURN NEW IDEAS INTO RIDEABLE PROTOTYPES IN AS LITTLE AS A DAY, AND BRING NEW MODELS TO MARKET WITH A HEAD-SPINNING SPEED THAT NO IMPORTER CAN POSSIBLY MATCH.

Cat. 1 road racer and Cannondale frame designer Chris Peck uses a sophisticated CAD (computer-aided design) computer linked electronically to the production floor of our Bedford, Pennsylvania, factory.

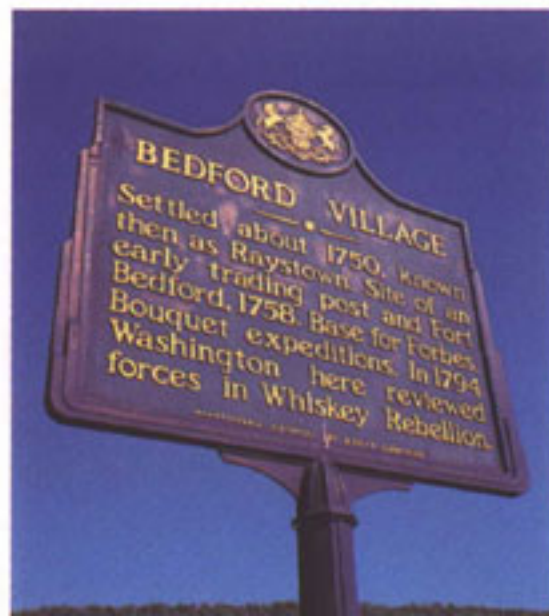
ING

Cannondale has been manufacturing its products in Bedford, Pennsylvania, for more than 20 years.

A Cannondale craftsman hand-welds a frame in Bedford, Pennsylvania.



Computer-guided lasers cut and shape 6061-T6 aluminum tubes to incredibly precise tolerances for the greatest possible weld integrity.



The Saeco/Cannondale pro road team is lead by multiple Tour de France stage winner Mario Cipollini and Giro d'Italia winner Ivan Gotti.







YOU

YOU LOVE TO RIDE. YOU LIVE TO RIDE. **YOU WANT THE BEST POSSIBLE BIKE.** BUT EVERY BIKE COMPANY SAYS THEY'RE THE BEST, AND THE CONFLICTING CLAIMS ARE BEWILDERING. SO HOW DO YOU DECIDE? OUR ADVICE? **FOCUS ON FACTS, NOT HYPE.** WHERE WAS THE BIKE MADE? (AND DOES A FOREIGN PEDIGREE INCREASE OR DECREASE THE CHANCES THAT A BIKE WILL HAVE CUTTING-EDGE FRAME TECHNOLOGY?) DOES THE BIKE HAVE THE SAME 'ME-TOO' COMPONENTS AND/OR SUSPENSION FORK AS EVERY OTHER MODEL? (IF SO, CAN IT REALISTICALLY OUTPERFORM OTHER MODELS WITH VIRTUALLY IDENTICAL SPECS?) HOW WAS IT TESTED? (ASSUMING IT WAS TESTED AT ALL.) FINALLY, HOW DOES IT PERFORM ON A TEST RIDE? REMEMBER: WHEN ALL IS SAID AND DONE, THE PROOF IS IN THE PERFORMANCE. TEST RIDE A CANNONDALE TODAY, AND WE'RE CONFIDENT YOU'LL BE IMPRESSED.

Super V Raven



Super V Raven 3000

- Super V Raven frame: "Everything else is spineless"
- HeadShok Super Fatty SL fork: Super steering precision, FT80 hydraulic cartridge with Custom Tuning Options, lightweight, 80mm of travel
- Shimano XTR derailleurs and splined Tarantula Competition crankset
- Cane Creek WAM wheelset
- Black-Tinted Clear Gloss w/Black-Tinted Clear fork and swingarm (BLK)



Super V Raven 1000

- Super V Raven frame: "Everything else is spineless"
- HeadShok Super Fatty SL fork: Super steering precision, FT80 hydraulic cartridge with Custom Tuning Options, lightweight, 80mm of travel
- Shimano XT/XTR derailleurs and Avid Arch Rival 50 brakes
- Mavic X221 eyeleted 32 hole rims with CODA Expert hubs
- ChromaLusion Purpleen Gloss w/ChromaLusion Purpleen fork and swingarm (CPU)



Super V Raven 900

- Super V Raven frame: "Everything else is spineless"
- HeadShok Super Fatty D fork: Super steering precision, DD80 hydraulic cartridge with On-The-Fly lockout, lightweight, 80mm of travel
- Shimano LX/XT derailleurs and Hayes disc brakes
- Mavic X223, 32 hole rims with CODA Expert disc hubs
- Black-Tinted Clear Gloss w/Black-Tinted Clear fork and swingarm (BLK)



Super V Raven 700

- Super V Raven frame: "Everything else is spineless"
- HeadShok Super Fatty D fork: Super steering precision, DD80 hydraulic cartridge with On-The-Fly lockout, lightweight, 80mm of travel
- Shimano LX/XT derailleurs and PX-2 side-pull cantilever brakes with cartridge pads
- Mavic X221, 32 hole rims with Shimano STX RC hubs
- Blue-Tinted Clear Gloss w/Blue-Tinted Clear fork and swingarm (BLU), Black-Tinted Clear Gloss w/Black-Tinted Clear fork and Mean Green swingarm (BLK)

Super V Freeride



Super V Raven Freeride 2000

- Super V Raven frame: "Everything else is spineless"
- HeadShok Moto FR fork: Ultimate control, steering precision with 100mm of luxurious travel, Custom Tuning Options
- Shimano XT/XTR derailleurs and CODA Compact Disc brakes
- Mavic X223, 32 hole rims with CODA Expert Disc hubs
- Black-Tinted Clear Gloss w/Black-Tinted Clear fork and swingarm (BLK)



Super V Freeride 900

- Super V SL frame: Active response, now 120 mm of travel
- HeadShok Moto FR fork: Ultimate control, steering precision with 100mm of luxurious travel, Custom Tuning Options
- Shimano LX/XT derailleurs and Hayes disc brakes
- Mavic X223, 32 hole rims with disc hubs
- Team Yellow Gloss w/Super Black fork and Team Yellow swingarm (YEL)



Super V Freeride 700

- Super V SL frame: Active response, now 120 mm of travel
- HeadShok Moto FR fork: Ultimate control, steering precision with 100mm of luxurious travel, Custom Tuning Options
- Shimano LX/XT derailleurs and PX-2 side-pull cantilever brakes with cartridge pads
- Mavic X221, 32 hole rims with Shimano STX RC hubs
- Charger Orange Gloss w/Super Black fork and Charger Orange swingarm (ORG), "Quiksilver Fade" Matte w/Mercury Silver fork and swingarm (SLV)

Super V



Super V 2000 Disc

- Super V SL frame: Active response, now 120 mm of travel
- HeadShok Super Fatty SL fork: Super steering precision, FT80 hydraulic cartridge with Custom Tuning Options, lightweight, 80mm of travel
- Shimano XT/XTR derailleurs and CODA Compact Disc brakes
- Mavic X223 rims with CODA Expert disc hubs
- Team Blue Gloss w/Team Blue fork and swingarm (BLU)



Super V 1000

- Super V SL frame: Active response, now 120 mm of travel
- HeadShok Super Fatty SL fork: Super steering precision, FT80 hydraulic cartridge with Custom Tuning Options, lightweight, 80mm of travel
- Shimano XT/XTR derailleurs and Avid Arch Rival 50 brakes
- Mavic X221 eyeletted 32 hole rims with CODA Expert disc hubs
- Iris Blue Matte w/Iris Blue fork and swingarm, Charger Orange Gloss w/Charger Orange fork and Super Black swingarm (ORG)



Super V 900 Disc

- Super V SL frame: Active response, now 120 mm of travel
- HeadShok Super Fatty D fork: Super steering precision, DD80 hydraulic cartridge with On-The-Fly lockout, lightweight, 80mm of travel
- Shimano LX/XT derailleurs and Hayes disc brakes
- Mavic X223, 32 hole rims with disc hubs
- "Quiksilver" Fade Matte w/Mercury Silver swingarm (SLV), Viper Red Gloss w/Viper Red fork and Super Black swingarm

Super V



Super V 700

- Super V SL frame: Active response, now 120 mm of travel
- HeadShok Super Fatty D fork: Super steering precision, DD80 hydraulic cartridge with On-The-Fly lockout, lightweight, 80mm of travel
- Shimano LX/XT derailleurs and PX-2 side-pull cantilever brakes with cartridge pads
- Mavic X221, 32 hole rims with Shimano STX RC hubs
- "Mean Team" Fade Gloss w/Team Yellow swingarm (MTF), Super Black Matte w/Super Black fork and swingarm (BLK)



Super V 500

- Super V SL frame: Active response, now 120 mm of travel
- HeadShok Super Fatty M fork: Super steering precision, lightweight, 80mm of travel
- Shimano Alivio/XT derailleurs and PX-2 side-pull cantilever brakes
- Weinman ZAC 19, 32 hole rims with Shimano Alivio hubs
- Mercury Silver Matte w/Super Black fork and Mercury Silver swingarm (SLV), Team Yellow Gloss w/Super Black fork and Team Yellow swingarm (YEL)



Super V 400

- Super V SL frame: Active response, now 120 mm of travel
- HeadShok Super Fatty M fork: Super steering precision, lightweight, 80mm of travel
- Shimano Alivio/LX derailleurs and TX-22 side-pull cantilever brakes
- Weinman 519, 32 hole rims with Shimano Alivio hubs
- Mean Green Gloss w/Mean Green fork and Super Black swingarm (GRN), Iris Blue Gloss w/Iris Blue fork and Mercury Silver swingarm (YEL)

Front Suspension



F4000

- CAAD4 Mountain frame: Volvo/Cannondale's World Cup weapon of choice, Handmade in USA
- HeadShok Fatty SL fork: Super steering precision, FT70 hydraulic cartridge with Custom Tuning Options, lightweight, 70mm of travel
- Shimano XTR derailleurs with CODA splined Tarentula Competition crankset
- Mavic Cross Link disc wheelset and CODA Compact Disc brakes
- "Industrial Fade" Matte (IND)



F3000

- CAAD4 Mountain frame: Volvo/Cannondale's World Cup weapon of choice, Handmade in USA
- HeadShok Fatty SL fork: Super steering precision, FT70 hydraulic cartridge with Custom Tuning Options, lightweight, 70mm of travel
- Shimano XTR derailleurs with CODA splined Tarentula Competition crankset
- Cane Creek WAM wheelset
- "Team Blue" Gloss (BLU)



F2000

- CAAD4 Mountain frame: Volvo/Cannondale's World Cup weapon of choice, Handmade in USA
- HeadShok Fatty SL fork: Super steering precision, FT70 hydraulic cartridge with Custom Tuning Options, lightweight, 70mm of travel
- Shimano XT/XTR derailleurs and CODA Compact Disc brakes
- Mavic X223, 32 hole rims with CODA Expert disc hubs
- "Afterburner Fade" Gloss (AFT)



F1000

- CAAD4 Mountain frame: Volvo/Cannondale's World Cup weapon of choice, Handmade in USA
- HeadShok Fatty SL fork: Super steering precision, FT70 hydraulic cartridge with Custom Tuning Options, lightweight, 70mm of travel
- Shimano XT/XTR derailleurs and Avid Arch Rival 50 brakes
- Mavic X221eyeletted 32 hole rims with CODA Expert hubs
- "Reptilian Fade" Matte (REP), ChromaLusion Purpleen Gloss (CPU)

Front Suspension



cannondale

F900

- CAAD3 Mountain frame: "Light as titanium," Handmade in USA
- HeadShok Fatty D fork: Super steering precision, DD60 hydraulic cartridge with On-The-Fly lockout, lightweight
- Shimano LX/XT derailleurs and Hayes disc brakes
- Mavic X223 32 hole disc rims with disc hubs
- Super Black Matte (BLK), Charger Orange Gloss (ORG)



cannondale

F700

- CAAD3 Mountain frame: "Light as titanium," Handmade in USA
- HeadShok Fatty D fork: Super steering precision, DD60 hydraulic cartridge with On-The-Fly lockout, lightweight
- Shimano LX/XT derailleurs and PX-2 side-pull cantilever brakes with cartridge pads
- Mavic X221, 32 hole rims with Shimano STX RC hubs
- Team Yellow Gloss (YEL), Iris Blue Matte (BLU)



cannondale

KV700

- Killer V frame: "Light as metal matrix," Handmade in USA
- HeadShok Fatty D fork: Super steering precision, DD60 hydraulic cartridge with On-The-Fly lockout, lightweight
- Shimano LX/XT derailleurs and PX-2 side-pull cantilever brakes with cartridge pads
- Mavic X221, 32 hole rims with Shimano STX RC hubs
- Iris Blue Matte (BLU), Team Yellow Gloss (YEL)

Front Suspension

cannondale



F600

- CAAD2 Mountain frame: "Light as metal matrix," Handmade in USA
- HeadShok P-Bone D fork: steering precision, DD60 hydraulic cartridge with On-The-Fly lockout
- Shimano LX/XT derailleurs and PX-2 side-pull cantilever brakes
- Mavic 138, 32 hole rims with Shimano STX RC hubs
- "Stinger Fade" Gloss (STG), Really Blue Gloss (BLU)

cannondale



F500

- CAAD2 Mountain frame: "Light as metal matrix," Handmade in USA
- HeadShok P-Bone M fork: steering precision, coil spring with nested MCU
- Shimano Alivio/XT derailleurs and PX-2 side-pull cantilever brakes
- Weinman ZAC 19, 32 hole rims with Shimano Alivio hubs
- Mean Green Gloss (GRN), Viper Red Gloss (RED)

cannondale



F400

- CAAD2 Mountain frame: "Light as metal matrix," Handmade in USA
- HeadShok P-Bone M fork: steering precision, coil spring with nested MCU
- Shimano Alivio/LX derailleurs and TX-22 side-pull cantilever brakes
- Weinman 519, 32 hole rims with Shimano Alivio hubs
- "Wildberry Fade" Gloss (WLD), Super Black Gloss (BLK)

cannondale



F300

- CAAD2 Mountain frame: "Light as metal matrix," Handmade in USA
- HeadShok P-Bone M fork: steering precision, coil spring with nested MCU
- Shimano Acera/STX derailleurs and TX-22 side-pull cantilever brakes
- Weinman 519, 36 hole rims with Shimano RM 40 hubs
- Viper Red Gloss (RED), Super Black Gloss (BLK)

Rigid Mountain

cannondale



M400

- CAAD2 Mountain frame: "Light as metal matrix," Handmade in USA
- 1 1/4" chrome-moly fork
- Shimano Alivio/LX derailleurs and TX-22 side-pull cantilever brakes
- Weinman 519, 32 hole rims with Shimano Alivio hubs
- Charger Orange Gloss (ORG), Tropic Green Matte (GRN)



XS800

- CAAD3 Cyclocross frame
- HeadShok Fatty X fork: Steering precision, light-weight, 25mm of travel with On-The-Fly lockout
- Shimano 105 9-speed components
- Mavic CXP 23, 32 hole rims with Shimano 105 hubs
- Charger Orange Gloss (ORG)

Cyclocross



XR800

- CAAD3 Cyclocross frame
- Rigid Cyclocross
- Shimano 105 9-speed components
- Mavic CXP 23, 32 hole rims with Shimano 105 hubs
- Charger Orange Gloss (ORG)

Smooth Riding Bikes



cannondale



F400 SRB

- CAAD2 Mountain frame: "Light as metal matrix, Handmade in USA"
- HeadShok P-Bone M fork: steering precision, coil spring with nested MCU
- Shimano Alivio/LX derailleurs and Nexave BR-T300 brakes
- Weinman 519, 32 hole rims with Shimano Alivio hubs
- Viper Red Gloss (RED), Battleship Grey Gloss (GRY)

SV 400 SRB

- Super V SL frame: Unparalleled comfort, Handmade in USA
- HeadShok Super Fatty M fork: Super steering precision, lightweight, 80mm of travel
- Shimano Alivio/LX derailleurs with Nexave BR-T300 brakes
- Weinman 519, 32 hole rims with Shimano Alivio hubs
- Tropic Green Gloss (GRN), Iris Blue Gloss (BLU)

cannondale



M500 SRB

- CAAD2 Mountain frame: "Light as metal matrix, Handmade in USA"
- 1 1/2" chrome-moly fork
- Shimano Alivio/LX derailleurs and Nexave BR-T300 brakes
- Weinman Zac 19, 32 hole rims with Shimano Alivio hubs
- Iris Blue w/Blue Pearl Hyper Gloss (BLU), Tropic Green Gloss (GRN)

Smooth Riding Bikes

cannondale



M300 SRB

- CAAD2 Mountain frame: "Light as metal matrix," Handmade in USA
- 1 1/4" chrome-moly fork
- Shimano Acera/STX derailleurs and Nexave BR-T300 brakes
- Weinman 519, 36 hole rims with Shimano RM 40 hubs
- Super Black Gloss (BLK), Jam Purple w/Violet Pearl Hyper Gloss (PUR)

cannondale



M300 Mixte SRB

- CAAD2 Mountain Mixte frame: "Light as metal matrix," Handmade in USA
- 1 1/4" chrome-moly fork
- Shimano Acera/STX derailleurs and Nexave BR-T300 brakes
- Weinman 519, 36 hole rims with Shimano RM 40 hubs
- Jam Purple w/Violet Pearl Hyper Gloss (PUR), Super Black Gloss (BLK)



Silk Road 1000

- CAAD3 Silk Road Racing frame: "Light as titanium," Handmade in USA
- HeadShok Silk Road Carbon fork: Ultralight carbon fiber blades, aluminum inner steerer tube, 15mm of travel with On-The-Fly lockout
- Shimano Ultegra 9-speed components
- Mavic CXP 23, 32 hole rims with Shimano Ultegra hubs
- "Stinger Fade" Gloss (STG)

Silk Road



Silk Road 500T

- CAAD2 Silk Road Racing frame: "Light as metal matrix," Handmade in USA
- HeadShok Silk Road aero fork: Lightweight aero aluminum blades, aluminum inner steerer tube, 15mm of travel with On-The-Fly lockout
- Shimano RSX 8-speed components
- Mavic CXP 11, 32 hole rims with Shimano RSX hubs
- Viper Red Gloss (RED)

Road



R5000 Saeco Team Replica Bike

- CAAD4 Road frame: Saeco/Cannondale's weapon of choice for the Tour de France
- Lightweight Slice carbon fiber fork
- Campagnolo Record components
- SpinerGY wheels with Team Saeco graphics
- Viper Red Gloss (RED)



R4000

- CAAD4 Road frame: Saeco/Cannondale's weapon of choice for the Tour de France
- Lightweight Slice carbon fiber fork
- Shimano Dura Ace components
- Mavic CXP 30, 24 hole rims with DT Swiss Competition 15/16 spokes
- ChromaLusion Jade Gloss (CJD), "USA Fade" Gloss (USA)

Road



cannondale
cannondale

R2000



- CAAD4 Road frame: Saeco/Cannondale's weapon of choice for the Tour de France
- Lightweight Slice carbon fiber fork
- Shimano Ultegra components
- Cane Creek Crono Aerohead wheelset
- "Blistering Fade" Gloss (BLS), Team Yellow Gloss (YEL)



cannondale

R1000D



- CAAD3 Road frame: "Light as titanium," Handmade in USA
- Lightweight Slice Echelon carbon fiber fork
- Shimano Ultegra 9-speed components
- Mavic CXP 23, 32 hole rims with DT Swiss Competition 15/16 spokes
- Charger Orange Gloss (ORG), "Industrial Fade" Gloss (IND)



R1000T

- CAAD3 Road frame: "Light as titanium," Handmade in USA
- Lightweight Slice Echelon carbon fiber fork
- Shimano Ultegra 9-speed components with triple crankset
- Mavic CXP 23, 32 hole rims with DT Swiss Competition 15/16 spokes
- "Arctic Fade" Gloss (ARC)



R800

- CAAD3 Road frame: "Light as titanium," Handmade in USA
- Lightweight Slice Echelon carbon fiber fork
- Shimano 105 9-speed components

- Mavic CXP 23, 32 hole rims with Shimano 105 hubs
- "Stinger Fade" Gloss (STG), ChromaLusion Purpleen Gloss (CPU)



R800 Compact

- CAAD2 Compact Road frame: "Light as metal matrix" and a perfect fit for smaller cyclists
- Lightweight ACD carbon fiber fork
- Shimano 105 9-speed components

- Sun ME 14A, 650c, 32 hole rims with Shimano 105 hubs
- ChromaLusion Purpleen Gloss (CPU)



R600

- CAAD2 Road frame: "Light as titanium," Handmade in USA
- Lightweight Slice Echelon carbon fiber fork
- Shimano 105 9-speed components

- Mavic CXP 11, 32 hole rims with Shimano RX100 hubs
- Mean Green Gloss (GRN), Super Black w/Blue Pearl Hyper Gloss (BLK)



cannondale



R500D

- CAAD2 Road frame: "Light as metal matrix," Handmade in USA
- Lightweight Slice Echelon carbon fiber fork
- Shimano RSX 8-speed components
- Mavic CXP 11, 32 hole rims with Shimano RSX hubs
- Viper Red Gloss (RED), "Hurricane Fade" Gloss (HUR)



R300

- CAAD2 Road frame: "Light as metal matrix," Handmade in USA
- Spinner chrome-moly fork
- Shimano RSX 8-speed components with triple crankset
- Mavic CXP 11, 32 hole rims with Shimano RSX hubs
- Iris Blue Gloss (BLU)

cannondale



R500T

- CAAD2 Road frame: "Light as metal matrix," Handmade in USA
- Lightweight Slice Echelon carbon fiber fork
- Shimano RSX 8-speed components with triple crankset
- Mavic CXP 11, 32 hole rims with Shimano RSX hubs
- "Hurricane Fade" Gloss (HUR), Viper Red Gloss (RED)



R300 Compact

- CAAD2 Compact Road frame: "Light as metal matrix" and a perfect fit for smaller cyclists
- Spinner chrome-moly fork
- Shimano RSX 8-speed components with triple crankset
- Sun ME 14A, 650c 36 hole rims with Shimano RSX hubs
- Iris Blue Gloss (BLU)

Multisport



Multisport 4000

- CAAD4 Aero Road frame: Cutting-edge frame technology with an aerodynamic profile
- Shimano Dura Ace components
- Kinesis Airfoil Carbon fork
- SpinerGY Rev-X wheelset
- "Industrial Fade" Gloss (IND)



Multisport 2000

- CAAD4 Aero Road frame: Cutting-edge frame technology with an aerodynamic profile
- Shimano 9-speed Ultegra components
- Kinesis Airfoil Carbon fork
- Mavic CXP 14 rims
- "Afterburner Fade" Gloss (AFT)



Multisport 800

- CAAD4 Aero Road frame: Cutting-edge frame technology with an aerodynamic profile
- Shimano 9-speed 105 components
- Kinesis Airfoil Carbon fork
- Mavic CXP 33 rims
- Jam Purple Gloss (PUR)

Silk Path



Silk Path 1000

- CAAD2 Silk Path frame: Handmade in USA
- HeadShok Silk Path D fork: Smooth sailing - 25mm of travel with On-The-Fly lockout
- Shimano LX/XT derailleurs and Nexave BR-T300 brakes
- Sun AT18, 36 hole rims with Shimano STX RC hubs
- "Arctic Fade" Gloss (ARC)



Silk Path 500

- CAAD2 Silk Path frame: Handmade in USA
- HeadShok Silk Path M fork: Smooth sailing - 25mm of travel
- Shimano Alivio/LX derailleurs and Nexave BR-T300 brakes
- Sun AT18, 36 hole rims with Shimano Alivio hubs
- Super Black Gloss (BLK), Jam Purple w/Blue Pearl Hyper Gloss (PUR)



Silk Path 500 Mixte

- CAAD2 Silk Path Mixte frame: Handmade in USA
- HeadShok Silk Path M fork: Smooth sailing - 25mm of travel
- Shimano Alivio/LX derailleurs and Nexave BR-T300 brakes
- Sun AT18, 36 hole rims with Shimano Alivio hubs
- Jam Purple w/Blue Pearl Hyper Gloss (PUR), Super Black Gloss (BLK)

Silk Path



cannondale

Silk Path 300

- CAAD2 Silk Path frame: Handmade in USA
- HeadShok Silk Path M fork: 25mm of travel with combination coil/MCU spring
- Shimano Acera/STX derailleurs and Nexave BR-T300 brakes
- Weinman 519, 36 hole rims with Shimano RM 40 hubs
- Viper Red Gloss (RED), Iris Blue Gloss (BLU)



cannondale

Silk Path 300 Mixte

- CAAD2 Silk Path mixte frame: Handmade in USA
- HeadShok Silk Path M fork: 25mm of travel with combination coil/MCU spring
- Shimano Acera/STX derailleurs and Nexave BR-T300 brakes
- Weinman 519, 36 hole rims with Shimano RM 40 hubs
- Iris Blue Gloss (BLU), Viper Red Gloss (RED)

cannondale



H500

- CAAD2 Hybrid frame: Handmade in USA
- 1 1/4" chrome-moly fork
- Shimano Alivio/LX derailleurs and Nexave BR-T300 brakes
- Sun AT18, 36 hole rims with Shimano Alivio hubs
- Super Black w/Blue Pearl Hyper Gloss (BLK), Lightning White w/White Pearl Hyper Gloss (WHT)

Hybrids

cannondale



H500 Mixte

- CAAD2 Hybrid Mixte frame: Handmade in USA
- 1 1/4" chrome-moly fork
- Shimano Alivio/LX derailleurs and Nexave BR-T300 brakes
- Sun AT18, 36 hole rims with Shimano Alivio hubs
- Lightning White w/White Pearl Hyper Gloss (WHT), Super Black w/Blue Pearl Hyper Gloss (BLK)

cannondale



H300

- CAAD2 Hybrid frame: Handmade in USA
- 1 1/4" chrome-moly fork
- Shimano Acera/STX derailleurs and Nexave BR-T300 brakes
- Sun AT18, 36 hole rims with Shimano RM40 hubs
- Really Blue Gloss (BLU), Tropic Green Gloss (GRN)

cannondale



H300 Mixte

- CAAD2 Hybrid Mixte frame: Handmade in USA
- 1 1/4" chrome-moly fork
- Shimano Acera/STX derailleurs and Nexave BR-T300 brakes
- Sun AT18, 36 hole rims with Shimano RM40 hubs
- Tropic Green Gloss (GRN), Really Blue Gloss (BLU)

Touring



T1000

- CAAD2 Touring frame: Handmade in USA
- TIG-welded chrome-moly fork
- Shimano XT/105 derailleurs and PX-2 side-pull cantilever brakes with cartridge pads
- Mavic T221, 36 hole rims with CODA Expert, 36 hole hubs
- ChromaLusion Jade Gloss (CJD)



TS700

- CAAD2 Touring Silk Path frame: Handmade in USA
- HeadShok Silk Path D fork: Smooth sailing - 25mm of travel with On-The-Fly lockout
- Shimano LX/RSX derailleurs and PX-2 side-pull cantilever brakes
- CR-17A, 36 hole rims with Shimano STX RC hubs
- Tropic Green Gloss (GRN)



T700

- CAAD2 Touring frame: Handmade in USA
- TIG-welded chrome-moly fork
- Shimano LX/RSX derailleurs and PX-2 side-pull cantilever brakes
- CR-17A, 36 hole rims with Shimano STX RC hubs
- Tropic Green Gloss (GRN)



T500

- CAAD2 Touring frame: Handmade in USA
- TIG-welded chrome-moly fork
- Shimano Alivio/STX derailleurs and TX-22 side-pull cantilever brakes
- Weinman 519, 36 hole rims with Shimano RM 40 hubs
- Iris Blue Gloss (BLU)

Tandems



MT3000

- Mountain Tandem frame: Handmade in USA
- HeadShok Moto FR fork: Ultimate control, steering precision with 100mm of luxurious travel, Custom Tuning Options
- Shimano XTR derailleurs with Magura Race Line D booster-equipped brakes
- Sun Rhyno Lite rims with CODA 901 (front) and Hugi Tandem (rear) hubs
- Team Yellow Gloss (YEL)



MT2000

- Mountain Tandem frame: Handmade in USA
- Pepperoni Tandem fork
- Shimano LX/XT derailleurs with Avid Arch Rival brakes
- Sun Rhyno Lite rims
- Mean Green Gloss (GRN), Iris Blue Gloss (BLU)



RT3000

- Road Tandem frame: Handmade in USA
- TIG-welded chrome-moly fork
- Shimano XTR/Ultegra derailleurs with Avid Arch Rival 50 brakes
- Mavic T221, 40 hole rims with Phil Wood tandem hubs
- Super Black w/ChromaLusion Purpleen front fade (CPU)



RT1000

- Road Tandem frame: Handmade in USA
- TIG-welded chrome-moly fork
- Shimano XT/RX derailleurs with Avid Arch Rival 50 brakes
- Mavic T221, 40 hole rims with Shimano XT Tandem hubs
- Tropic Green Gloss (GRN), Lightning White w/White Pearl Hyper Gloss (WHT)

SPEED IS OUR FRIEND™

"Speed Is Our Friend" has become the unofficial motto of Cannondale. On one level, these four simple words reflect our support of some of the world's top professional cyclists. On a more fundamental level, they convey our commitment to a lightning-fast product development process that, with amazing speed, turns the combined insights of our sponsored riders and R&D staff into technologically superior products. Underlying it all, "Speed Is Our Friend" speaks of our dedication to producing the fastest bicycles in the world.

If "Speed Is Our Friend" reflects our strategy, the manner in which we pursue this strategy is best described in our philosophy:

THE CANNONDALE PHILOSOPHY

Our passion is to be the best cycling company in the world.

We will succeed because:

1. We care about our customers, suppliers and each other.
2. We design and deliver a stream of innovative products.
3. We continuously improve.
4. We concentrate on detail.
5. We limit our distribution to the best bicycle retailers in the world.
6. We govern our every deed by what is just and right.

Thank you,



Joseph S. Montgomery
Founder & President

USA: 1-800-BIKE-USA • Europe: (31)-5415-73580
Japan: (81)-722-99-9399 • Australia: (61)-2-997-95851

www.cannondale.com



cannondale
HANDMADE IN USA