

1  
9  
9  
6



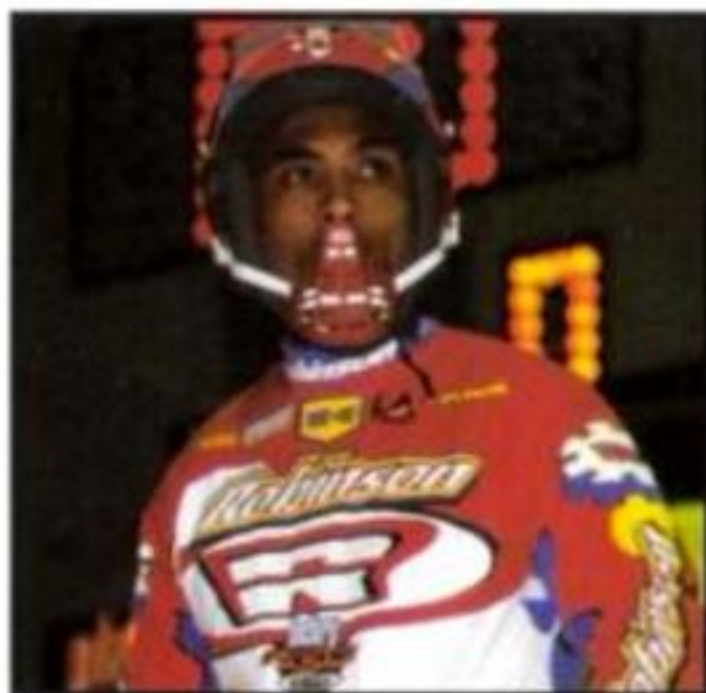
**Robinson**  
*racing*



# Robinson racing

Robinson builds bikes for one purpose: winning races. Anyone who has been to the BMX races over the last 15 years has seen the red, white and blue of Robinson screaming around the track. At Robinson, the colors run deeper than just a jersey design. All Robinson bikes are built in the U.S.A. using the best materials and the highest quality GT and Robinson componentry. From the Rebel to the top-of-the-line Pro Team, all Robinsons are built in the U.S.A. to meet the demands of BMX riders around the world.

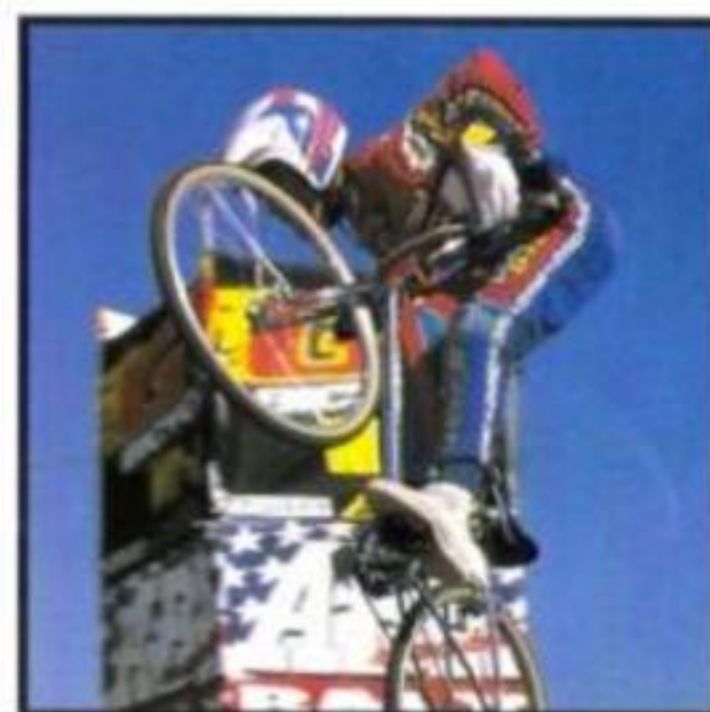
When you add up all the benefits that will be yours when you ride a Robinson, the choice becomes clear. From experience earned from years of winning races to countless hours of research and development, to top quality U.S.A. construction, the Robinson tradition continues...Pure BMX.



*Charles "Amtrac" Townsend - Charles is said by the pros to be the hardest working rider in BMX. On or off the track, Charles knows that hard work pays off. A few years ago, when he wanted a few changes to his bike, Charles talked with the Robinson product development team and came up with a completely new frame design. Today, you can buy that frame appropriately, named - the Amtrac.*



*Chad Hernaez - Chad brings a lot of experience with him to the Robinson team. He is a past U.C.I. World Champion and current NBL National Champion. He loves the challenge and competition of racing and takes it very seriously in his quest for victory. His smooth riding style and jumping finesse give Chad an almost unfair advantage over his competitors.*



*Jason Ream - Jason is a new rider to the Robinson team for 1995 and has been a welcomed addition. Winning almost every race he has entered, Jason doesn't plan on slowing down. At the tender age of 12, he is one of the best all-around riders in the sport and it looks like he will have a bright future.*



*Gary Houseman - At only 14 years old, Gary has spent the last 10 years on a BMX bike - growing up with the sport of BMX. Gary has always been at the top of his age group and 1995 has been no exception with Gary winning numerous races. Gary is looking to gain the one title that has eluded him his whole BMX career - the ABA National Number One Amateur. Gary also races and trains on mountain bikes - he placed first in dual slalom at his first NORBA national.*



*Larry Miersch - Larry has had an eventful year. After being crowned ABA National Number One Amateur Cruiser rider, Larry went all out to remind everyone how he earned it. Winning races is what Larry is all about. He also began competing in NHRA drag races this year, driving his own top alcohol-fueled dragster. Whether at the BMX track or the drag strip, chances are you will find Larry out in front.*



*Alexis Vergara - Alexis loves to ride his bike. He spends hours at his local riding spot in San Jose, "Tea Cups." He frequently rides with nearby neighbor, Charles Townsend and picks up training tips from him (and maybe gives Charles a tip or two!). All his riding pays off on the track when Alexis can pass somebody over a jump, scoop them in a tight corner, or stay a little lower over a set of doubles.*



*Sarah Wilson - Sarah has been winning races in 1995 aboard her Robinson Pro frame. Halfway through 1995, Sarah started to run Spin wheels to gain an edge on her competition. That's the last thing her competition wanted! Looking to regain the title of ABA National Number One Girl, Sarah is on the right path for the upcoming 1996 season.*

THE  
M  
A  
T  
E  
R



# Pro Team

When Robinson factory rider, Gary Houseman, lines up at the gate with his Pro Team, he knows his bike is ready to perform. The Pro Team features a 100% chromoly Robinson XL frame that is built in the U.S.A. to handle the toughest racing situations. The Robinson Pro Team uses a 1 1/8" head tube, AHead fork and a host of top quality components, including a GT alloy AHead stem, GT micro-adjust seat post, GT 3-piece chromoly cranks with sealed bearing bottom bracket, Araya Super 7X alloy rims and GT Mohawk sealed bearing hubs. With this top-of-the-line Robinson under you, how can you lose?



Robinson

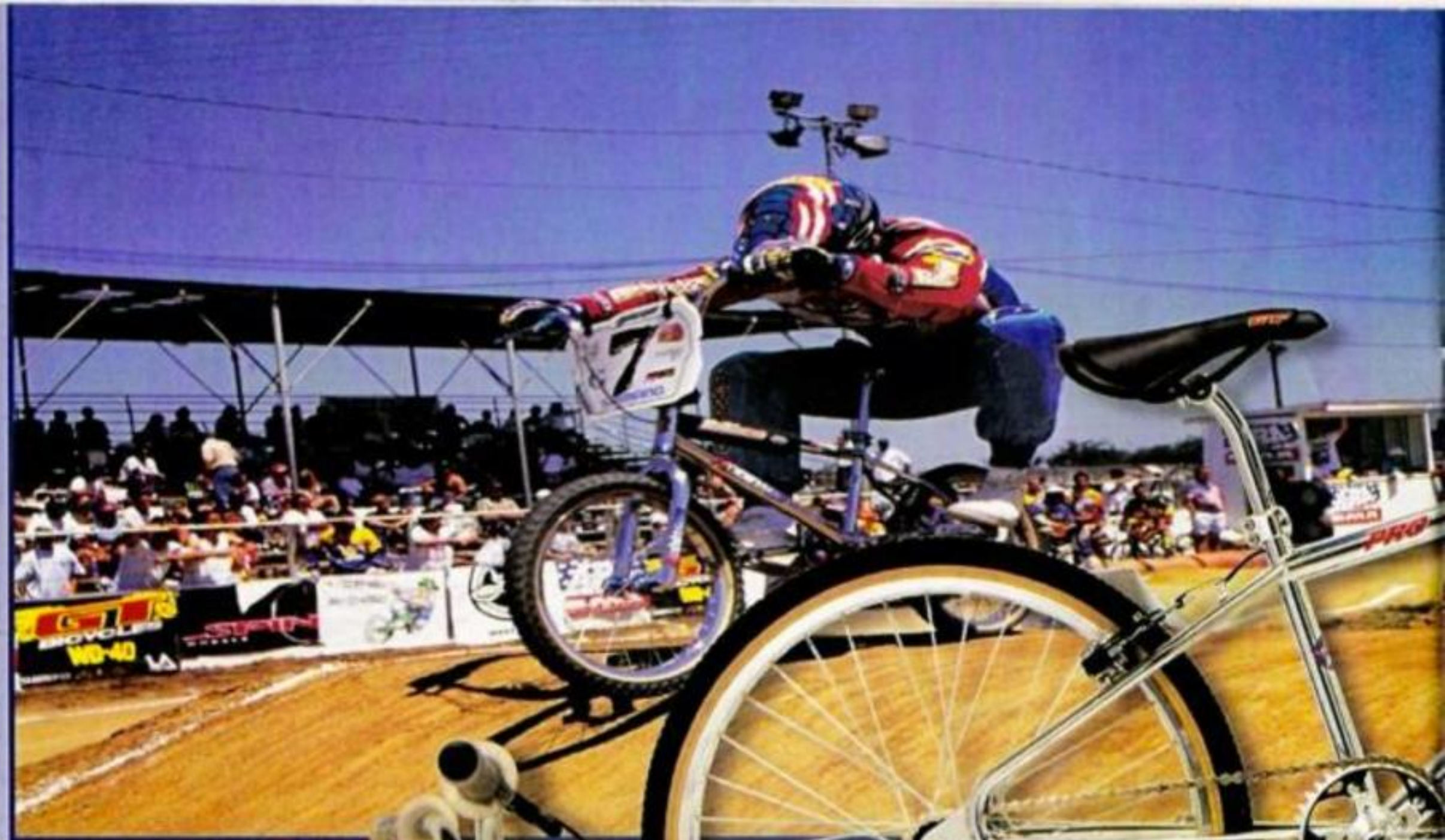
B  
U  
I  
L  
T  
A





# PRO

Time spent on the BMX track will pay off when you sit at the gate with your new Robinson Pro. The Pro features a 100% chromoly frameset, 1 1/8" head tube, cantilever brakes and 1 1/8" fork blades. The remainder of the bike is outfitted with a padded GT drop nose saddle, GT alloy platform pedals, GT Megabite tires and GT Mohawk sealed bearing hubs. Your experience, plus the race-ready Robinson Pro equals an unbeatable combination.





# Junior

What junior rider doesn't want to get on the gate knowing they are riding the best bike available? The Robinson Jr. is ready for the holeshot with a built-in-the-U.S.A. 100% chromoly Robinson frame and fork, Robinson junior aluminum handlebar, Dia-Compe alloy brakes, Sugino 3-piece crank, GT sealed bearing hubs and Sun hi-polished alloy rims. The Robinson Jr. will take you from the bike shop floor to the finish line in record time.



## Pro 24"

Larry Miersch wouldn't ride any other cruiser. Why? It's simple - together they win races. In fact, Larry Miersch has won numerous national titles aboard his Robinson. The Robinson cruiser starts with a 100% chromoly frame and fork and adds a GT inverted stem, padded GT drop nose saddle, GT AA Pro tires, Weinmann alloy rims and GT Mohawk sealed bearing hubs. While you may not be racing all over the world, competing at the highest level of BMX competition, it is nice to know that your Robinson cruiser could take you there.



BUILT  
USA





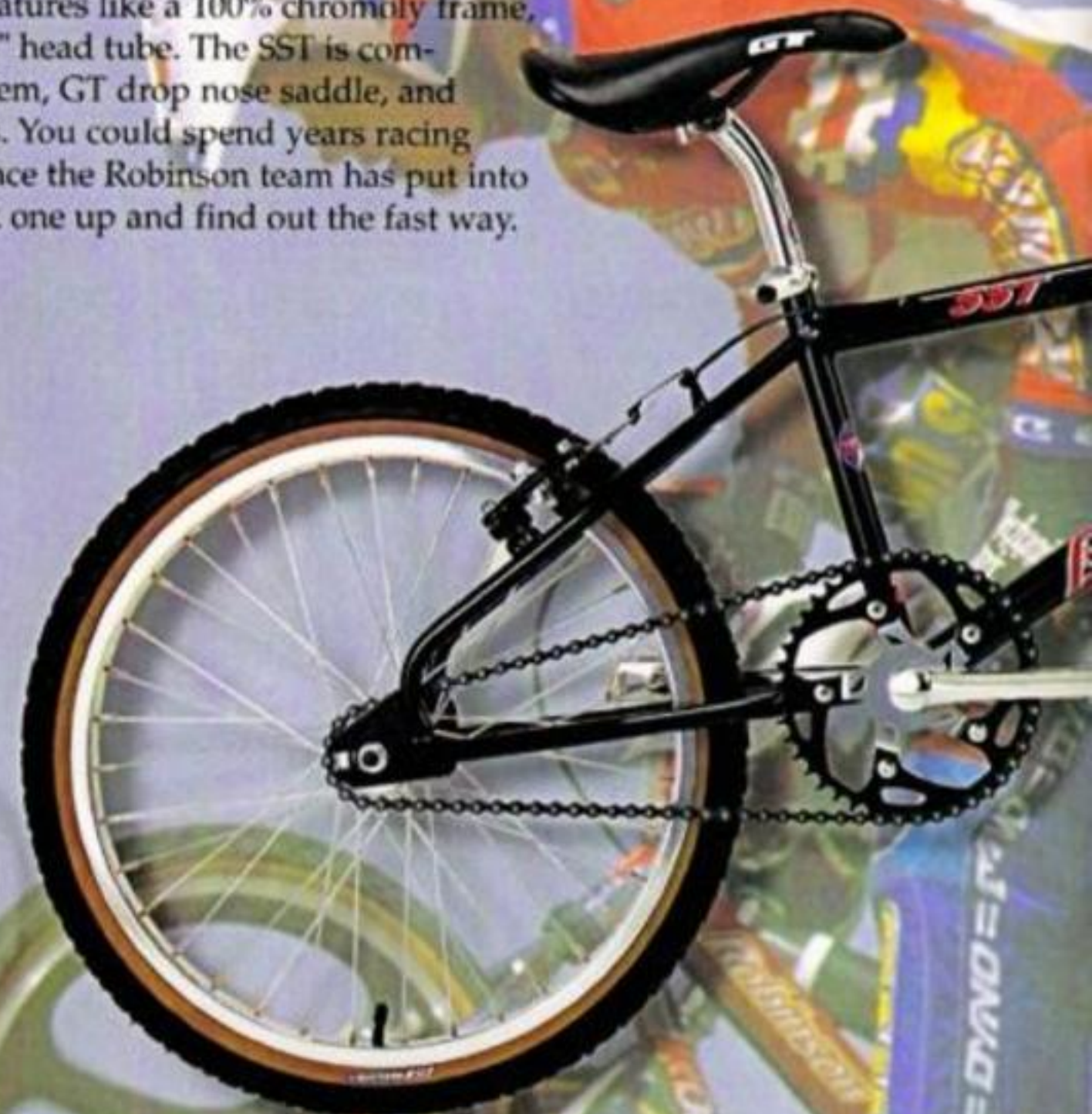
# SST

With input from the Robinson team riders, Robinson has designed the SST with features like a 100% chromoly frame, cantilever brakes, and 1 1/2" head tube. The SST is completed with a GT alloy stem, GT drop nose saddle, and GT alloy platform pedals. You could spend years racing BMX to gain the experience the Robinson team has put into this bike, or you can pick one up and find out the fast way.

# MX

If you're looking for a Robinson bike with the features of the top-of-the-line Robinsons, without breaking your wallet, look no further than the Robinson MX. The MX has a full chromoly frame, 1 1/2" head tube, Robinson expert handlebars, GT micro-adjust seat post, GT alloy platform pedals and GT Megabite tires. Line up the Robinson MX on the gate at your BMX track or just cruise around town in style.

B  
U  
I  
L  
T  
A



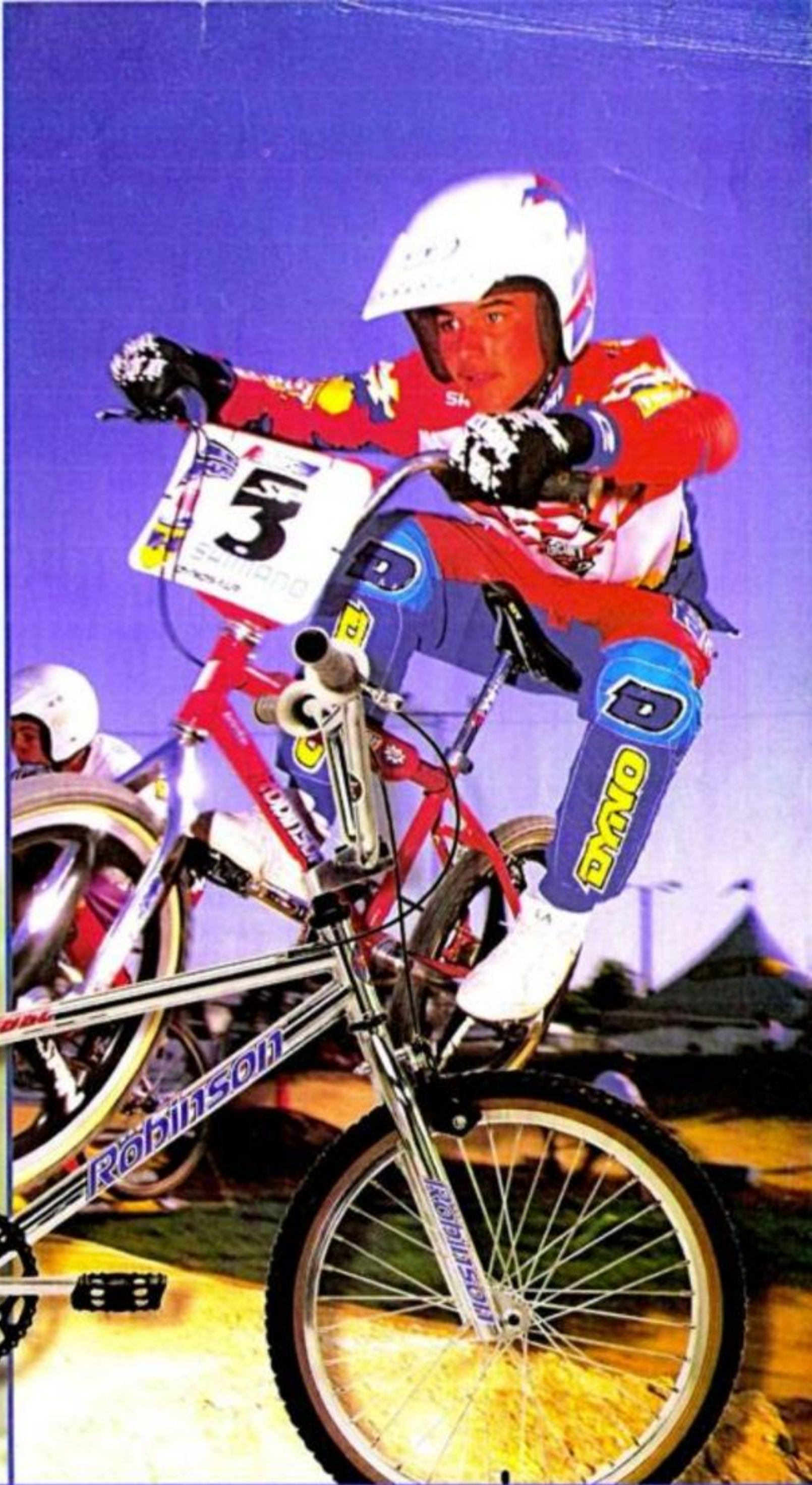


**Robinson**  
racing



# REBEL

You've been to the track and now you're ready to ride a Robinson like your favorite pro, Charles Townsend. The Rebel features cantilever brakes, GT alloy stem and seat post clamp, GT megabite tires, GT platform pedals, Weinmann alloy rims, and GT alloy hubs. Built for speed, this bike is a proven winner.





MODEL	HA	SA	TT	BH	CS	WB
JUNIOR	74°	70°	17 1/4"	11 1/2"	14"	33"
PRO, REBEL, MX, SST	72°	73 1/2°	19 1/4"	11 1/2"	14 1/2"	36 1/2"
PRO TEAM	74°	71 1/2°	20 1/4"	11 1/2"	15 1/2"	36 1/2"
CRUISER	72°	71°	20 1/4"	12"	16 1/2"	39 1/2"

\*All dimensions in inches.

HA = Head tube angle  
 SA = Seat Tube angle  
 TT = Top Tube length  
 BH = Bottom Bracket Height  
 CS = Chain Stay length  
 WB = Wheel Base  
 \* Measurements are center to center



## Robinson Pro, XL and Amtrac

All Robinson frame kits include frame, fork, headset, stem, brakes, seat post and seat post clamp. From the Robinson Pro to the extra long Robinson Amtrac, all Robinson frames are built in the U.S.A. from 4130 chromoly tubing and incorporate the latest in BMX technology, including oversized down tubes, AHead stems, cantilever brakes and split cable routing.

**Robinson**  
RACING

BUILT  
IN  
A



## Robinson Junior and Pro 24 framesets

From the smallest junior rider to cruiser riders around the world, Robinson has a frame to fit you. Both the Robinson Junior and the Pro 24 are built in the U.S.A. from 4130 chromoly tubing. Born in BMX, Robinson stays true to its roots with race-ready geometry, quality construction and show chrome finish.

\*Specifications subject to change without notice.

© 1995 - 1996 Robinson Racing Products - 3100 W. Segerstrom Ave. Santa Ana, CA 92704

Remember life's way too short - Ride safely and always wear a helmet.

Photos by Gork, Losey, & Montgomery



1. Robinson/AXO factory jersey - Look and feel like your favorite Robinson factory rider with the newly designed Robinson jersey. Comes standard with Robinson factory cosponsors. Available in child's small through adult XL.
2. Robinson/AXO pants - The official pant of the Robinson factory riders. Designed and made by AXO. Red, white and blue with Robinson logos. Available in 22" through 40".
3. Robinson Pro handlebar - 4130 chromoly, .049 wall for weight savings. Made in the U.S.A.
4. Robinson Seat Posts - Chrome plated 4130 chromoly tubing, straight or laid back. Made in the U.S.A.
5. Robinson hat - After you take off your helmet, the Robinson hat is the ideal item to keep the sun off. One size fits all.
6. Robinson T-shirt - In the pit there is no better way to look good than with a Robinson T-shirt. Available in child's small through adult XL.
7. Robinson pad sets - Choose red or black to save yourself from the black and blue. Screened with the Robinson logo.
8. Robinson mobile - Let your friends know you're proud to ride a Robinson. The Robinson mobile is perfect for hanging in your room or the garage.