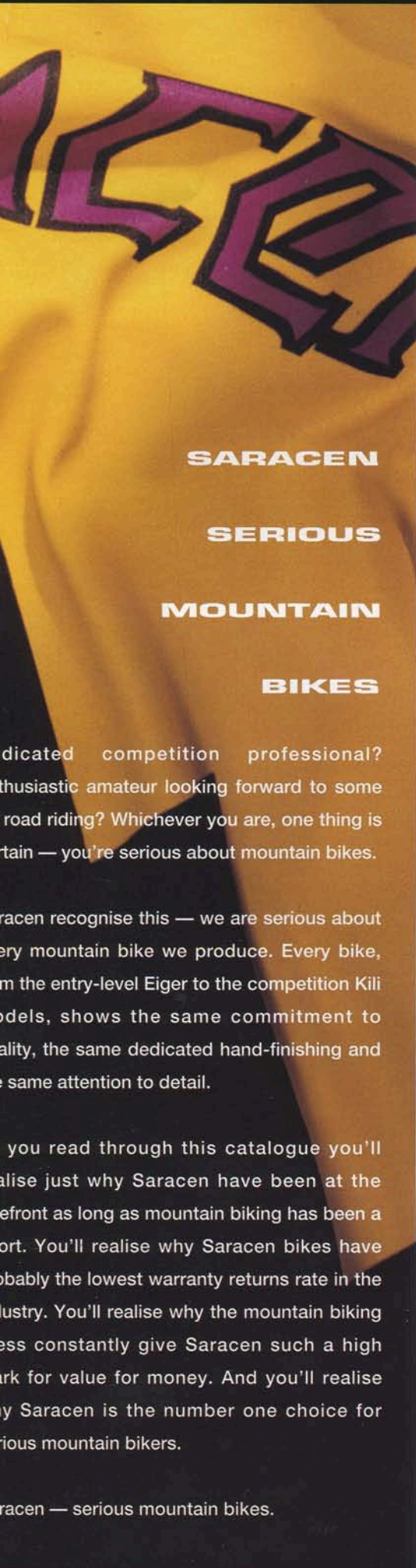


1 9 9 4



SERIOUS MOUNTAIN BIKES



SARACEN
SERIOUS
MOUNTAIN
BIKES

dedicated competition professional?
enthusiastic amateur looking forward to some
road riding? Whichever you are, one thing is
certain — you're serious about mountain bikes.

Saracen recognise this — we are serious about
every mountain bike we produce. Every bike,
from the entry-level Eiger to the competition Kili
models, shows the same commitment to
quality, the same dedicated hand-finishing and
the same attention to detail.

As you read through this catalogue you'll
realise just why Saracen have been at the
forefront as long as mountain biking has been a
sport. You'll realise why Saracen bikes have
probably the lowest warranty returns rate in the
industry. You'll realise why the mountain biking
press constantly give Saracen such a high
mark for value for money. And you'll realise
why Saracen is the number one choice for
serious mountain bikers.

Saracen — serious mountain bikes.

THE 1994 RANGE

In the early days mountain biking was all about endurance. Competition and speed were secondary to the challenge of seemingly impassable terrain and seemingly impossible odds. Against this background, Saracen produced sturdy bikes, as used by Richard and Nick Crane to set the world altitude record (19,230 ft) on Mt Kilimanjaro in 1985.

The modern descendants of those early bikes are still sturdy, and still setting records. But with the trend towards competition riding, and the development of new frame and componentry materials, you'll find they are also much lighter and faster. At Saracen we use the latest technology, much of it pioneered by scientists researching materials for NASA's space programme, to guarantee the best strength to weight ratio available in each price bracket. That we succeed is shown by the achievements of the Saracen Pro-Am Mountain Bike Team: 86 podium places out of 143 finishes in only its second race season. We do not, however, believe in sacrificing performance for the sake of a few grammes in weight — the bike that wins has to last to the end of the race. It's a philosophy based on quality and reliability which applies as much to our entry level as to our professional models.



BEHIND EVERY GREAT PRODUCT IS A GREAT WORKFORCE: from skilled bike builders, through technical, sales and accounts, to despatch, the entire team plays its part in ensuring that Saracen's 1994 range continues to set the highest standards in mountain bikes.

QUALITY

Our reputation depends on delivering the goods every time. That's why every bike, from the entry-level Eiger to the competition model Kili Ultra receives the same care and attention, from selection of components through assembly and hand-finishing to a nationwide network of dealers offering dedicated after-sale service to our customers. Every Saracen bike is covered by a comprehensive warranty. More important, a Saracen gives you the confidence to take your bike off road, secure in the knowledge that our quality standards and reliability are unequalled.

Look at any Saracen, whether fresh from the workshop or hot off the trail, and you'll be struck by our attention to detail. As well as being a tribute to the craftsmanship of our hand finished brazing, frame coating and assembly, it says a lot about the high standard of the original components. We'd like to take you step by step through the production process, to show how your Saracen is put together, and why it will stay together.

PUTTING IT ALL TOGETHER:
hand finishing, welding and brazing is still the only way to guarantee total frame precision. Our experienced craftsmen ensure the same high standards are maintained in every Saracen.



APPLIED TECHNOLOGY: Saracen's famous polyester powder coat finish, electrostatically applied over a chromate rust proofing primer, then baked at 180°C, means every bike is ready for whatever the trail throws at it.

WORKMANSHIP

Less obvious to the immediate glance is the care that goes into assembling and finishing your Saracen. Despite our commitment to modern technology in an industry full of innovation we have found that old fashioned values are the only way to guarantee that every bike is worthy of the Saracen name. One mechanic is assigned to each bike, responsible for its progress at every stage up to final set-up and delivery. On the way his work is checked and signed (the works ticket is attached to your new bike), and an indelible and unique number is stamped on the frame. We believe it's the combination of ultra modern technology with individual responsibility and pride in workmanship that keep Saracen ahead of the competition.



SET UP TO PERFECTION: before it leaves the factory, every Saracen is rigorously checked and fully set up, even down to hand adjusting the tension of individual spokes. It takes time, but Saracen riders will tell you it's worth it.

COMPONENTS

You'll notice that Saracen bikes contain several branded components. We source the parts for our bikes from all round the world, constantly evaluating the best new technology and assessing new super-light and super-strong materials. Quality, reliability and suitability are our yardsticks, and experienced mountain bikers will know that these brand names represent the best in the business. Saracen are proud to display those brands on our bikes — they demonstrate our commitment to quality.

"Whatever the price point, Saracen always offer a bike worthy of attention. For '94, they stage a fourteen prong attack on the market, offering front suspension on eleven machines and drawing from all the big names in componentry to create one of the most intelligently specced ranges we've seen to date."

Steve Worland, Mountain Biking UK, MTB Pro.

AFTER SALES

Every Saracen is set up before it leaves our works — we sell mountain bikes not self-assembly kits. Your bike reaches the shop as near perfect for riding as possible, but our commitment to you doesn't end there. Through our dealers we operate a comprehensive national spares and service network, while continual retailer training programmes, product updates and a regular newsletter ensure that your dealer always has the latest information on Saracen bikes.

FRONT

SUSPENSION



PACE RC 35

Sliders	Kevlar Carbon
Stanchions	Chromoly
Dampers	Sorbothane
Travel	52mm
Weight	1252gms

ROCK SHOX QUADRA 10

Sliders	Magnesium Alloy
Stanchions	Chromoly
Dampers	Kryptonite Elastomers
Travel	43mm
Weight	1360gms

MAX SHOCK PRO

Sliders	Alloy
Stanchions	Chromoly
Dampers	MCU Elastomers
Travel	50mm
Weight	1380gms

MAX SHOCK COMP

Sliders	Alloy
Stanchions	Chromoly
Dampers	MCU Elastomers
Travel	38mm
Weight	1290gms

MAX SHOCK TEAM

Sliders	Chromoly
Stanchions	Chromoly
Dampers	MCU Elastomers
Travel	38mm
Weight	1600gms

MAX SHOCK

Sliders	Hi-ten Steel
Stanchions	Chromoly
Dampers	MCU Elastomers
Travel	38mm
Weight	1900gms

The professionals will tell you that front suspension really comes into its own for downhill handling and cornering. Our quality suspension improves your bike's ability to deal with rough terrain because it absorbs most of the shocks from uneven surfaces. Needless to say, you also get a more comfortable ride.

Saracen have fitted elastomer suspension systems to eleven models in their 1994 range. Chosen for lightness and rigidity, and ease of servicing, they use an advanced synthetic rubber for combined spring and damping action.

We also take care to match the geometry of our bikes to their individual suspension forks, ensuring perfect handling and optimum ride position.

EIGER — The Eiger is an entry level bike without the usual ride-quality compromises that restrict the rapid progress of new trailsters. Low weight, 21 speed Gripshift operated Shimano Alivio gears and a classy wheelset all point to abilities that bely the low price. The wide range of sizes includes a 17" ladies model.

EIGER

OUTSTANDING FEATURES AND RIDER BENEFITS

WEIGHT: 28 lbs. 12.7 kilos

- **LIGHTNESS AND RIGIDITY** from a frameset constructed out of Tange MTB oversize chromoly double-butted main frame tubes
- **OFF ROAD PERFORMANCE** with componentry from Shimano's new for '94 Alivio/CT50 21-speed group set
- **POSITIVE SHIFTING** through Gripshift's new indexed handlebar controls
- **EFFICIENT STOPPING POWER** by Shimano's 'M' system brakes
- **OFF-ROAD WHEEL PACK** with Alesa alloy 32-hole rims hand built onto Shimano Parallax sealed QR hubs topped out with Vee Rubber Directional tyres for powerful off road grip
- **POSITIVE RESPONSIVE STEERING** with light alloy bars teamed with an ultra light chromoly stem and a Tioga Avenger Shake-proof headset
- **RIDER COMFORT** is provided by a Saracen Comfort System saddle
- **SLEEK FRAME FINISH** in Satin Titanium or Metallic Black (Ladies model in Raspberry) by Saracen's famous epoxy polyester powder coat finish — the toughest in the industry
- **ATTENTION TO DETAIL** the hallmark of every Saracen, with our renowned quality control systems right through to our final hand-building process





HANDBUILT IN ENGLAND

ANDES FS — This is Saracen's entry level suspension machine. Its uncompromising approach, for riders who demand maximum action on minimum budget, includes dedicated suspension frame geometry, Max Shock elastomer forks, fast change Gripshift operated gears and a real attention grabbing paint job on the fat Tange double butted tubes.

ANDES FS

OUTSTANDING FEATURES AND RIDER BENEFITS

WEIGHT: 29.75 lbs. 13.5 kilos

- **LIGHTNESS AND RIGIDITY** from a frameset constructed out of Tange MTB oversize chromoly double-butted main frame tubes
- **IMPACT ABSORBING FRONT SUSPENSION** with the benefit of Max Shock elastomer suspension forks
- **OFF ROAD PERFORMANCE** with componentry from Shimano's new for '94 Alivio/CT50 21-speed group set
- **POSITIVE SHIFTING** through Gripshift's new indexed handlebar controls
- **EFFICIENT STOPPING POWER** by Shimano's 'M' system brakes
- **OFF-ROAD WHEEL PACK** with Alesa alloy 32-hole rims hand built onto Shimano Parallax sealed QR hubs topped out with Vee Rubber Directional tyres for powerful off road grip
- **POSITIVE RESPONSIVE STEERING** with light alloy bars teamed with an ultra light chromoly control stem and a Dia-Compe Aheadset system
- **RIDER COMFORT** is provided by a Saracen Comfort System saddle
- **SLEEK FRAME FINISH** in Turquoise by Saracen's famous epoxy polyester powder coat finish — the toughest in the industry
- **ATTENTION TO DETAIL** the hallmark of every Saracen, with our renowned quality control systems right through to our final hand-building process

SARACEN

SAHARA FS — “An extremely well-balanced bike with capabilities that way outshine its price category...we'll be amazed if we come across a better bike for the price in 1993” was Mountain Biking UK's verdict on the 1993 Sahara. This year we've upped the spec and given you even better value for money.

SAHARA FS

OUTSTANDING FEATURES AND RIDER BENEFITS

WEIGHT: 29.5 lbs. 13.4 kilos

- **LIGHTNESS AND RIGIDITY** from a frameset constructed out of Tange MTB oversize chromoly double-butted frame tubes
- **IMPACT ABSORBING FRONT SUSPENSION** with the benefit of Max Shock elastomer suspension forks
- **OFF ROAD PERFORMANCE** with componentry from Shimano's new for '94 Alivio Plus 21-speed group set
- **POSITIVE SHIFTING** through Gripshift's new indexed 300 handlebar controls
- **EFFICIENT STOPPING POWER** by Shimano's 'M' system brakes
- **OFF-ROAD WHEEL PACK** with Alesa alloy 32-hole rims hand built onto Shimano Parallax sealed QR hubs topped out with Vee Rubber Directional tyres for powerful off road grip
- **POSITIVE RESPONSIVE STEERING** with light alloy bars teamed with an ultra light chromoly control stem, Onza bar ends and a Dia-Compe Aheadset system
- **RIDER COMFORT** is provided by a Saracen Comfort System saddle
- **SLEEK FRAME FINISH** in Metallic Black by Saracen's famous epoxy polyester powder coat finish — the toughest in the industry
- **ATTENTION TO DETAIL** the hallmark of every Saracen, with our renowned quality control systems right through to our final hand-building process



SERIOUS MOUNTAIN BIKES

HAND BUILT IN ENGLAND



TUFFTRAX — "...among the most stable, the best handling and the best finished bikes on the market. The sign of a good MTB is that it feels comfortable and totally controllable over any terrain that your skills can handle. The Tufftrax does just that and more. It inspires confidence and it makes you want to learn how to progress to greater levels of skill." Steve Worland, *Mountain Biking UK '94*

TUFFTRAX

OUTSTANDING FEATURES AND RIDER BENEFITS

WEIGHT: 26.5 lbs. 12 kilos

- **LIGHTNESS AND RIGIDITY** from a frameset constructed out of Tange MTB midsize chromoly double-buttet frame tubes
- **OFF ROAD PERFORMANCE** with componentry from Shimano's new for '94 STX/Alivio Plus 21-speed group set
- **POSITIVE SHIFTING** through Gripshift's new indexed 'Tomac' Competition 500 handlebar controls
- **EFFICIENT STOPPING POWER** by Shimano's 'M' system brakes
- **OFF-ROAD WHEEL PACK** with Bontrager BCX3 alloy 32-hole rims hand built onto Shimano Parallax sealed QR hubs topped out with Ritchey Z Max performance tyres
- **POSITIVE RESPONSIVE STEERING** with Ritchey light Force Directional bars teamed with Ritchey light chromoly Force Directional control stem, Onza bar ends and a Tioga Alchemy Aheadset system
- **RIDER COMFORT** is provided by a Vetta SP saddle
- **SLEEK FRAME FINISH** in Ocean Blue by Saracen's famous epoxy polyester powder coat finish — the toughest in the industry
- **ATTENTION TO DETAIL** the hallmark of every Saracen, with our renowned quality control systems right through to our final hand-building process

MAXTRAX FS — The Maxtrax is a stunner — Ultra Violet double butted tubes, a Max Shock Team Elastomer suspension fork, the full Shimano Alivio Plus groupset including Rapidfire Plus shifters, Bontrager rims with Ritchey Z Max tyres, Ritchey stem, Onza bar ends — it all points to high performance, maximum status and superb value for money.

MAXTRAX

FS

OUTSTANDING FEATURES AND RIDER BENEFITS

WEIGHT: 28.75 lbs. 13 kilos

- **LIGHTNESS AND RIGIDITY** from a frameset constructed out of Tange MTB midsize chromoly double-butted frame tubes
- **IMPACT ABSORBING FRONT SUSPENSION** with the benefit of Max Shock Team elastomer suspension forks
- **OFF ROAD PERFORMANCE** with componentry from Shimano's new for '94 STX/Alivio Plus 21-speed group set
- **POSITIVE SHIFTING** through Shimano's Rapidfire Plus trigger shifters with selector indicators
- **EFFICIENT STOPPING POWER** by Shimano's 'M' system brakes
- **OFF-ROAD WHEEL PACK** with Bontrager BCX3 alloy 32-hole rims hand built onto Shimano Parallax sealed QR hubs topped out with Ritchey Z Max performance tyres
- **POSITIVE RESPONSIVE STEERING** with Ritchey light Force Directional bars teamed with Ritchey light chromoly Force Directional control stem, Onza bar ends and a Tioga Alchemy Aheadset system
- **RIDER COMFORT** is provided by a Vetta SP saddle
- **SLEEK FRAME FINISH** in Ultra Violet by Saracen's famous epoxy polyester powder coat finish — the toughest in the industry
- **ATTENTION TO DETAIL** the hallmark of every Saracen, with our renowned quality control systems right through to our final hand-building process



SERIOUS MOUNTAIN BIKES



TREKKER FS — Shimano's STX componentry adds the final classy touch to the Trekker, but the front suspension, the tried and tested high output geometry, the classy set of wheels and some of the best finishing componentry around speaks reams at this price. No wonder the Saracen Trekker has been a favourite for so long.

TREKKER

FS

OUTSTANDING FEATURES AND RIDER BENEFITS

WEIGHT: 26.75 lbs. 12 kilos

- **LIGHTNESS AND RIGIDITY** from a frameset constructed out of Tange MTB midsize lightweight chromoly double-buttet frame tubes
- **IMPACT ABSORBING FRONT SUSPENSION** with the benefit of Max Shock Comp alloy elastomer suspension forks
- **OFF ROAD PERFORMANCE** with componentry from Shimano's new for '94 STX 21-speed group set
- **POSITIVE SHIFTING** through Shimano's Rapidfire Plus trigger shifters with selector indicators
- **EFFICIENT STOPPING POWER** by Shimano's 'M' system brakes
- **OFF-ROAD WHEEL PACK** with Bontrager BCX3 alloy 32-hole rims hand built with stainless spokes onto Shimano Parallax sealed QR hubs topped out with Ritchey Z Max performance tyres
- **POSITIVE RESPONSIVE STEERING** with Ritchey light Force Directional bars teamed with Tioga light Alchemy alloy control stem, Onza bar ends and a Tioga Alchemy Aheadset system
- **RIDER COMFORT** is provided by a Vetta SP saddle
- **SLEEK FRAME FINISH** in Deep Purple by Saracen's famous epoxy polyester powder coat finish — the toughest in the industry
- **ATTENTION TO DETAIL** the hallmark of every Saracen, with our renowned quality control systems right through to our final hand-building process

SARACEN

TRAVERSE FS SPECIAL EQUIPMENT — At around 26lb for a front suspension bike, we're getting down to some seriously impressive weight saving here. The full Chromica finish STX Special Equipment groupset is the icing on the cake, but the real action bonuses are in the Max Shock Pro suspension forks, Ritchey Kevlar tyres and Force Lite bars and Manganese rail Vetta saddle.

TRAVERSE FS

OUTSTANDING FEATURES AND RIDER BENEFITS

WEIGHT: 26 lbs. 11.8 kilos

- **LIGHTNESS AND RIGIDITY** from a frameset constructed out of Tange MTB midsize lightweight chromoly double-buttet frame tubes
- **IMPACT ABSORBING FRONT SUSPENSION** with the benefit of Max Shock Pro alloy elastomer suspension forks with extra travel
- **OFF ROAD PERFORMANCE** with componentry from Shimano's new for '94 STX 21-speed Special Equipment group set
- **POSITIVE SHIFTING** through Shimano's Rapidfire-Plus trigger shifters with selector indicators
- **EFFICIENT STOPPING POWER** by Shimano's 'M' system brakes
- **OFF-ROAD WHEEL PACK** with Bontrager BCX3 alloy 32-hole rims hand built with stainless spokes onto Shimano Parallax sealed QR hubs topped out with Ritchey Z Max Kevlar lightweight performance tyres
- **POSITIVE RESPONSIVE STEERING** with Ritchey Force Lite bars teamed with Tioga light Alchemy alloy control stem, Onza bar ends and a Tioga Alchemy alloy Aheadset system
- **RIDER COMFORT** is provided by a Vetta SP saddle with manganese rails
- **SLEEK FRAME FINISH** in Satin Titanium by Saracen's famous epoxy polyester powder coat finish — the toughest in the industry
- **ATTENTION TO DETAIL** the hallmark of every Saracen, with our renowned quality control systems right through to our final hand-building process

HANDBUILT IN ENGLAND



SERIOUS MOUNTAIN BIKES



HAND BUILT IN ENGLAND

RACER 24 FS — The 24 inch wheel Saracen Racer carves its own unique niche in the market place, offering all the style, elegance and functional punch of its bigger brothers. While scaling down to a 13" frame for small riders who want a bike that truly fits, the Racer still offers the top benefits of front suspension, 18-speed Gripshift operating Shimano gears and a classy light-weight componentry package.

RACER 24 FS

OUTSTANDING FEATURES AND RIDER BENEFITS

WEIGHT: 28.25 lbs. 12.8 kilos

- **LIGHTNESS AND RIGIDITY** from a frameset constructed out of Tange MTB oversize chromoly double-butted main frame tubes
- **IMPACT ABSORBING FRONT SUSPENSION** with the benefit of Max Shock elastomer suspension forks
- **OFF ROAD PERFORMANCE** with componentry from Shimano's new for '94 MJ 18-speed scaled down group set
- **POSITIVE SHIFTING** through Gripshift's new indexed handlebar controls
- **EFFICIENT STOPPING POWER** by Shimano's 'M' system brakes
- **OFF-ROAD WHEEL PACK** with Alesa alloy 36-hole rims hand built onto Shimano MJ hubs topped out with Vee Rubber Directional tyres for powerful off road grip
- **POSITIVE RESPONSIVE STEERING** with light alloy bars teamed with an ultra light chromoly control stem and a Dia-Compe Aheadset system
- **RIDER COMFORT** is provided by a Saracen Comfort System saddle
- **SLEEK FRAME FINISH** in Satin Titanium by Saracen's famous epoxy polyester powder coat finish — the toughest in the industry
- **ATTENTION TO DETAIL** the hallmark of every Saracen, with our renowned quality control systems right through to our final hand-building process

SARACEN

SARACEN TEAM

Team manager Mick Ives has blended the experience and expertise of top MTB riders with the best emerging young British talent to put Saracen at the forefront of the UK's competition circuit.



Trophy hunting is only part of the story, though. Pitting their bikes against the toughest opposition over the most demanding courses, the team are our unofficial test riders: their feedback and suggestions over the past two seasons have helped us plan new models and improve our existing range. Riding standard production models, the Saracen Pro-Am Race Team demonstrate the ability of our bikes to compete at the highest level — just look at their results.



The Saracen Team's second season, like its first, has been an outstanding success, including two BMBF National Championship titles. Against the UK's toughest opposition the team fought their way to first place 43 times during 1993. Overall, with 25 seconds and 18 thirds, they gained podium places in 60% of their 143 finishes and took the team prize in the Man v Horse v Bike event. Abroad, four riders competed in the World Championships, while team members also took part in the longest mountain bike race in the world (131km over six Swiss mountain passes), the Trophy of Belgium — taking third place — and the Annapurna Triathlon and the Himalayan Mountain Bike Championships, where their successes included an event record, two seconds and a third. Their record is a tribute to the stamina and ability of the Saracen team — and proof positive of the quality, reliability and sheer raceworthiness of Saracen bikes.





KILI TEAM FS — Competition geometry, Tange mid-sized lightweight chromoly and Prestige frame tubes form the race basis for the Kili Team FS, and the big names make a bold statement in the weight, speed and handling stakes — Rock Shox Quadra forks, full Shimano Deore LX drivetrain, Ritchey rims, tyres, bars and stem and the fine Ballistic bar ends — all top notch stuff.

KILI TEAM

FS

OUTSTANDING FEATURES AND RIDER BENEFITS

WEIGHT: 24.75 lbs. 11.25 kilos

- **LIGHTNESS AND RIGIDITY** from a frameset constructed from Tange MTB midsize lightweight chromoly/Prestige double-butted frame tubes
- **IMPACT ABSORBING FRONT SUSPENSION** with the benefit of world-renowned Rock Shox Quadra elastomer suspension forks
- **OFF ROAD COMPETITION PERFORMANCE** with racing componentry from Shimano's new for '94 Deore LX 21-speed group set
- **POSITIVE SHIFTING** through Shimano's Rapidfire Plus trigger shifter with selector indicators
- **EFFICIENT STOPPING POWER** by Shimano's 'M' system brakes
- **OFF-ROAD WHEEL PACK** with Ritchey Rock 440 alloy 32-hole rims hand built with stainless double-butted spokes onto Shimano Parallax sealed QR hubs topped out with Ritchey Z Max Kevlar lightweight performance tyres
- **POSITIVE RESPONSIVE STEERING** with Ritchey Force Lite bars teamed with Ritchey Force Lite chromoly competition control stem, Ballistic lightweight chromoly bar ends and a Tioga Alchemy alloy Aheadset system
- **RIDER COMFORT** is provided by a Vetta TT competition saddle with manganese rails
- **SLEEK FRAME FINISH** in Satin Titanium by Saracen's famous epoxy polyester powder coat finish — the toughest in the industry
- **ATTENTION TO DETAIL** the hallmark of every Saracen, with our renowned quality control systems right through to our final hand-building process
- **SPECIAL EQUIPMENT:** Ritchey Pro WCS grips, USE alloy seat post, titanium frame bolts

SARACEN

KILI COMP — There are riders who prefer the pure speed and grace of a top spec rigid bike. The Kili Comp is for them. At around 23.5lbs, it shifts like a greyhound, but it's no slouch when the going gets rough, using competition level componentry to maximum advantage — Tomac Gripshift links up to Shimano's 24-speed XT gear system and the Ritchey and Ballistic tags adorn the rider contact points.

KILI COMP

OUTSTANDING FEATURES AND RIDER BENEFITS

WEIGHT: 23.5lbs. 10.7 kilos

- **LIGHTNESS AND RIGIDITY** from a frameset constructed from Tange MTB midsize lightweight chromoly/Prestige double-butted frame tubes
- **OFF ROAD COMPETITION PERFORMANCE** with racing componentry from Shimano's new for '94 Deore LX/XT 24-speed group set
- **POSITIVE SHIFTING** through Gripshift's new indexed 'Tomac' Competition 500 handlebar controls
- **EFFICIENT STOPPING POWER** by Shimano's 'M' system brakes
- **OFF-ROAD WHEEL PACK** with Ritchey Rock 440 alloy 32-hole rims hand built with stainless double-butted spokes onto Shimano Deore XT Parallax sealed QR hubs topped out with Ritchey Z Max Kevlar lightweight performance tyres
- **POSITIVE RESPONSIVE STEERING** with Ritchey Force Lite bars teamed with Ritchey Force Lite chromoly competition control stem, Ballistic lightweight chromoly bar ends and a Tioga Alchemy alloy Aheadset system
- **RIDER COMFORT** is provided by a Vetta TT competition saddle with manganese rails
- **SLEEK FRAME FINISH** in Ultra Violet by Saracen's famous epoxy polyester powder coat finish — the toughest in the industry
- **ATTENTION TO DETAIL** the hallmark of every Saracen, with our renowned quality control systems right through to our final hand-building process
- **SPECIAL EQUIPMENT:** Ritchey 2 finger brake levers, USE alloy seat post, titanium frame bolts

HANDBUILT IN ENGLAND



SERIOUS MOUNTAIN BIKES



KILI PRO FS — Rock Shox Quadra forks and Shimano Deore XT 24 speed gears are the ideal hassle free combination for riders whose serious approach puts a strain on the componentry. The Kili Pro FS finds the perfect mix of light weight, high speed and maximum adaptability — a hard rider's bike with an easy to swallow price tag.

KILI PRO FS

OUTSTANDING FEATURES AND RIDER BENEFITS

WEIGHT: 24.75 lbs. 11.25 kilos

- **LIGHTNESS AND RIGIDITY** from a frameset constructed from Tange MTB midsize lightweight chromoly/Prestige double-butted frame tubes
- **IMPACT ABSORBING FRONT SUSPENSION** with the benefit of world-renowned Rock Shox Quadra elastomer suspension forks
- **OFF ROAD COMPETITION PERFORMANCE** with racing componentry from Shimano's new for '94 Deore LX/XT 24-speed group set
- **POSITIVE SHIFTING** through Gripshift's new indexed 'Tarmac' Competition 500 handlebar controls
- **EFFICIENT STOPPING POWER** by Shimano's 'M' system brakes
- **OFF-ROAD WHEEL PACK** with Ritchey Rock 440 alloy 32-hole rims hand built with stainless double-butted spokes onto Shimano Deore XT Parallax sealed QR hubs topped out with Ritchey Z Max Kevlar lightweight performance tyres
- **POSITIVE RESPONSIVE STEERING** with Ritchey Force Lite bars teamed with Ritchey Force Lite chromoly competition control stem, Ballistic lightweight chromoly bar ends and a Tioga Alchemy alloy Aheadset system
- **RIDER COMFORT** is provided by a Vetta TT competition saddle with manganese rails
- **SLEEK FRAME FINISH** in Deep Purple by Saracen's famous epoxy polyester powder coat finish — the toughest in the industry
- **ATTENTION TO DETAIL** the hallmark of every Saracen, with our renowned quality control systems right through to our final hand-building process
- **SPECIAL EQUIPMENT:** Shimano Deore XT Special Suspension front hub, Ritchey 2 finger brake levers, USE alloy seat post, titanium frame bolts

SARACEN

KILI FLYER FS — The Kili Flyer FS is a pure race bred machine, with a crisp and precise ride feel. Steve Worland, reviewing it for *Mountain Biking UK*, wrote: "The Saracen Kili Flyer is a superb all rounder that would be very much at home on the race circuit." Need we say more?

KILI FLYER FS

OUTSTANDING FEATURES AND RIDER BENEFITS

WEIGHT: 24.25 lbs. 11 kilos

- **LIGHTNESS AND RIGIDITY** from a frameset constructed from Tange Prestige ultra light/ultra strong midsize double-buttet main tubes
- **IMPACT ABSORBING FRONT SUSPENSION** with the ultimate elastomer suspension fork from Pace, using a construction of alloy and Kevlar, resulting in an ultra lightweight high performance fork
- **OFF ROAD COMPETITION PERFORMANCE** with racing componentry from Shimano's new for '94 Deore XT 24-speed group set
- **POSITIVE SHIFTING** through Shimano's Rapidfire Plus trigger shifters with selector indicators
- **EFFICIENT STOPPING POWER** by Shimano's 'M' system brakes
- **OFF-ROAD WHEEL PACK** with Ritchey Rock 395 alloy 32-hole rims hand built with stainless double-buttet spokes onto Shimano Deore XT Parallax sealed QR hubs topped out with Ritchey Z Max Kevlar WCS ultra lightweight performance tyres
- **POSITIVE RESPONSIVE STEERING** with Ritchey Force Lite bars teamed with Ritchey Force Lite chromoly competition control stem, Ballistic lightweight chromoly bar ends and a Tioga Alchemy alloy Aheadset system
- **RIDER COMFORT** is provided by a Vetta TT competition saddle with manganese rails
- **SLEEK FRAME FINISH** in Satin Titanium by Saracen's famous epoxy polyester powder coat finish — the toughest in the industry
- **ATTENTION TO DETAIL** the hallmark of every Saracen, with our renowned quality control systems right through to our final hand-building process
- **SPECIAL EQUIPMENT:** Shimano Deore XT Special Suspension front hub, Ritchey Pro WCS grips, USE alloy seat post, titanium frame bolts

HANDBUILT IN ENGLAND



SERIOUS MOUNTAIN BIKES



HAND BUILT IN ENGLAND

KILI XTR FS — The Kili XTR FS achieves bare minimum weight for a steel front suspension bike by going with the best tubes, the best forks and the best groupset available. To top that it also offers a considered smattering of titanium componentry including the famous Royce Racing bottom bracket, and one of the lightest and strongest wheelsets around.

KILI XTR FS

OUTSTANDING FEATURES AND RIDER BENEFITS

WEIGHT: 23.5lbs. 10.7 kilos

- **LIGHTNESS AND RIGIDITY** from a frameset constructed from Tange Prestige ultra light/ultra strong midsize double-butted frame tubes
- **IMPACT ABSORBING FRONT SUSPENSION** with the ultimate elastomer suspension fork from Pace, using a construction of alloy and Kevlar, resulting in an ultra lightweight high performance fork
- **OFF ROAD COMPETITION PERFORMANCE** with the ultimate racing components from Shimano's XTR 24-speed group set
- **POSITIVE SHIFTING** through Shimano's Rapidfire Plus trigger shifters with selector indicators
- **EFFICIENT STOPPING POWER** by Shimano's 'M' system brakes
- **OFF-ROAD WHEEL PACK** with Ritchey Rock 395 alloy 32-hole rims hand built with stainless double-butted spokes onto Shimano XTR sealed QR hubs topped out with Ritchey Z Max Kevlar WCS ultra lightweight performance tyres
- **POSITIVE RESPONSIVE STEERING** with Ritchey Pro Lite WCS bars teamed with Ritchey Force Lite control stem, Ballistic titanium bar ends and a Dia-Compe alloy cartridge Aheadset system
- **RIDER COMFORT** is provided by a Vetta SL competition saddle with titanium rails
- **SLEEK FRAME FINISH** in Satin Titanium by Saracen's famous epoxy polyester powder coat finish — the toughest in the industry
- **ATTENTION TO DETAIL** the hallmark of every Saracen, with our renowned quality control systems right through to our final hand-building process
- **SPECIAL EQUIPMENT:** Pace suspension titanium kit, Ritchey Pro WCS grips, USE titanium seat post, Royce titanium BB set, titanium frame bolts

SARACEN

KILI ULTRA FS — There's nothing quite like the ride of the Kili Ultra. The ultimate bike must always be dominated by the weight, ride comfort and long life advantages of titanium. Frame, fork parts, bottom bracket, bar ends, saddle and seatpost all use the wondrous material, and the ultimate componentry package is obviously finished with an XTR groupset. Weight? Under 22lb!

KILI ULTRA

FS

OUTSTANDING FEATURES AND RIDER BENEFITS

WEIGHT: 21.75 lbs. 9.9 kilos

- **LIGHTNESS AND RIGIDITY** from a frameset constructed totally from aerospace grade T1 3AL 2.5V titanium — the ultimate frame material
- **IMPACT ABSORBING FRONT SUSPENSION** with the ultimate elastomer suspension fork from Pace, using a construction of alloy and Kevlar, resulting in an ultra lightweight high performance fork
- **OFF ROAD COMPETITION PERFORMANCE** with the ultimate racing components from Shimano's XTR 24-speed group set
- **POSITIVE SHIFTING** through Shimano's Rapidfire Plus trigger shifters with selector indicators
- **EFFICIENT STOPPING POWER** by Shimano's 'M' system brakes
- **OFF-ROAD WHEEL PACK** with Ritchey Rock 395 alloy 32-hole rims hand built with stainless double-butted spokes onto Shimano XTR sealed QR hubs topped out with Ritchey Z Max Kevlar WCS ultra lightweight performance tyres
- **POSITIVE RESPONSIVE STEERING** with Ritchey Pro Lite WCS bars teamed with Ritchey Force Lite control stem, Ballistic titanium bar ends and a Dia-Compe alloy cartridge Aheadset system
- **RIDER COMFORT** is provided by a Vetta SL competition saddle with titanium rails
- **SLEEK FRAME FINISH** in Natural Titanium
- **ATTENTION TO DETAIL** the hallmark of every Saracen, with our renowned quality control systems right through to our final hand-building process
- **SPECIAL EQUIPMENT:** Pace suspension titanium kit, Ritchey Pro WCS grips, USE titanium seat post, Royce titanium BB set, titanium frame bolts

HANDBUILT IN ENGLAND



SERIOUS MOUNTAIN BIKES



CLOTHING

In addition to serious mountain bikes, your Saracen dealer is the place to find a serious collection of clothing. Of course, just as with Saracen bikes, you'll find we use only top quality materials. As well as Racewear (featured opposite), there's Activewear: a range of cotton-rich polo shirts, sweatshirts and T-shirts. Designed to be cool, hard-wearing and distinctive, every shirt has a hand-embroidered logo. There are also Activewear shorts and a new range of Saracen printed logo sweatshirts and T-shirts.

Choose from: Activewear polo shirts in Navy, Jade or Black; Activewear sweatshirts in Teal Blue, Purple or Black; Activewear T-shirts in Purple, Teal Blue, Jade or Black; Activewear shorts in Jade and Purple or Teal Blue and Black; Saracen printed logo sweatshirts or short-sleeved T-shirts in Black. All shirts are available in Medium, Large and Extra Large. Shorts are available in Small, Medium, Large and Extra Large.



Activewear Polo shirt: NAVY

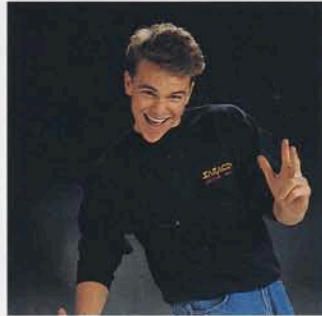


Activewear Polo shirt: JADE

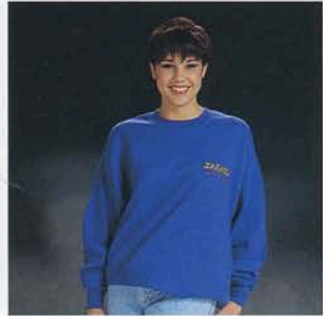


Activewear Polo shirt: BLACK

THE 1994 RANGE



Activewear Sweatshirt: BLACK



Activewear Sweatshirt: PURPLE



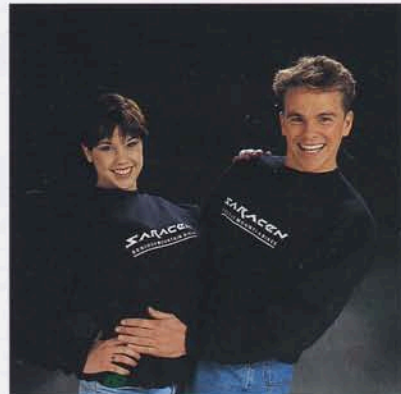
Activewear Sweatshirt: TEAL BLUE



Activewear T-shirts: BLACK
Activewear Shorts: BLACK/TEAL BLUE



Activewear T-shirts: JADE; PURPLE



Saracen Logo Sweatshirts



Saracen Logo T-shirts (short sleeves)

The ultimate racewear for the serious mountain biker — the 1994 Saracen team kit. Made from superlight, high quality lycra, Saracen racewear is designed for maximum comfort and minimum wind resistance. Shown here are the Short Sleeve Team Jersey (long sleeved version also available) and the Team Shorts. Watch out during the season for additions to the range.

All items are available in Small, Medium, Large and Extra Large.



MODEL

	EIGER	ANDES FS	SAHARA FS	TUFFTRAX	MAXTRAX FS	TREKKER FS	TRAVERSE FS Special Equipment
SIZE	14.5", 15.5", 17", 19" Ladies 17"	14.5", 15.5", 17", 19"	14.5", 15.5", 17", 19"	14.5", 15.5", 17", 19"	14.5", 15.5", 17", 19"	15.5", 17", 19"	15.5", 17", 19"
COLOUR	Satin Titanium or Metallic Black Ladies Raspberry	Turquoise	Metallic Black	Ocean Blue	Ultra Violet	Deep Purple	Satin Titanium
WEIGHT	28 lbs (12.7 kilos)	29.75 lbs (13.5 kilos)	29.5 lbs (13.4 kilos)	26.5 lbs (12 kilos)	28.75 lbs (13 kilos)	26.75 lbs (12 kilos)	26 lbs (11.8 kilos)
FRAME SET							
FRAME	Tange MTB oversize chromoly Double-butted main tubes	Tange MTB oversize chromoly Double-butted main tubes	Tange MTB midsize chromoly Double-butted frame tubes	Tange MTB midsize chromoly Double-butted frame tubes	Tange MTB midsize chromoly Double-butted frame tubes	Tange MTB midsize lightweight chromoly Double-butted frame tubes	Tange MTB midsize lightweight chromoly Double-butted frame tubes
FORK	Max Drive Tange chromoly	Max Shock Elastomer suspension system	Max Shock Elastomer suspension system	Max Drive Super Light Tange chromoly	Max Shock Team Elastomer suspension system	Max Shock Comp Alloy Elastomer suspension system	Max Shock Pro Alloy Elastomer suspension system
HEADSET	Tioga Avenger Shake Proof	Dia-Compe Aheadset system	Dia-Compe Aheadset system	Tioga Alchemy Aheadset system	Tioga Alchemy Aheadset system	Tioga Alchemy Aheadset system	Tioga Alchemy Aheadset system
FRAME GEOMETRY (based on 17" frame)							
HEAD ANGLE	71°	71°15'	71°15'	71°	71°15'	71°15'	71°15'
SEAT ANGLE	74°	74°	74°	74°	74°	74°	74°
INSTAY LENGTH	425mm (16.75")	425mm (16.75")	425mm (16.75")	425mm (16.75")	425mm (16.75")	425mm (16.75")	425mm (16.75")
TUBES LENGTH	560mm (22")	560mm (22")	560mm (22")	560mm (22")	560mm (22")	560mm (22")	560mm (22")
BB HEIGHT	292mm (11.5")	310mm (12.25")	310mm (12.25")	292mm (11.5")	310mm (12.25")	310mm (12.25")	310mm (12.25")
DRIVE TRAIN							
CHAINSET	Shimano TY21 48-38-28	Shimano TY21 48-38-28	Shimano Alivio Compact Drive 42-34-24	Shimano Alivio Plus FCMC 11 Compact Drive 42-34-24	Shimano Alivio Plus FCMC 11 Compact Drive 42-34-24	Shimano STX Compact Drive 42-34-24	Shimano STX Chromica Compact Drive 42-34-24
BB SET	Shimano BBCS 11 Cartridge	Shimano BBCS 11 Cartridge	Shimano BBLP 20 Cartridge	Shimano BBLP 20 Cartridge	Shimano BBLP 30 Cartridge	Shimano BBLP 30 Cartridge	Shimano BBUN 51 Cartridge
PEDALS	Tioga Surefoot 31 with toeclips & straps	Tioga Surefoot 31 with toeclips & straps	Tioga Surefoot 31 with toeclips & straps	Tioga Surefoot 31 alloy with toeclips & straps	Tioga Surefoot 31 alloy with toeclips & straps	Tioga Surefoot 31 alloy with toeclips & straps	VP 180 alloy with toeclips & straps
GEAR SYSTEM							
F/R DERAILLEUR	Shimano CT50 Alivio	Shimano CT50 Alivio	Shimano Alivio Plus RD/FDMC11	Shimano Alivio Plus front STX rear	Shimano Alivio Plus front STX rear	Shimano STX	Shimano STX Chromica
SHIFTERS	Grip shift SRT 300i	Grip shift SRT 300i	Grip shift SRT 300i	Grip shift SRT 500 Tomac 7 speed	Shimano Alivio Rapidfire Plus STMC 11	Shimano STX Rapidfire Plus	Shimano STX Chromica Rapidfire Plus
BRAKE SYSTEM							
BRAKERS	Shimano 'M' system	Shimano 'M' system	Shimano Alivio 'M' system	Shimano Alivio 'M' system	Shimano Alivio 'M' system	Shimano Alivio 'M' system	Shimano STX Chromica 'M' system
LEVERS	Shimano 2 finger	Shimano 2 finger	Shimano 2 finger	Ritchey 2 finger	Shimano Alivio 2 finger	Shimano STX 2 finger	Shimano STX Chromica 2 finger
WHEELS							
RIMS	Alesa 4019 Alloy 32 hole	Alesa 4019 Alloy 32 hole	Alesa 4019 Alloy 32 hole	Bontrager BCX3 32 hole	Bontrager BCX3 32 hole	Bontrager BCX3 32 hole	Bontrager BCX3 32 hole
HUBS	Shimano QR Parallax (sealed)	Shimano QR Parallax (sealed)	Shimano QR Parallax (sealed)	Shimano QR Parallax (sealed)	Shimano QR Parallax (sealed)	Shimano STX Parallax QR	Shimano STX Parallax QR
CASSETTE	Shimano CSHG 50 7 speed 13.26	Shimano CSHG 50 7 speed 13.26	Shimano CSHG 50C 7 speed 11.28	Shimano CSHG 50C 7 speed 11.28	Shimano CSHG 50C 7 speed 11.28	Shimano CSHG 50C 7 speed 11.28	Shimano CSHG 60C 7 speed 11.28
SPOKES	Rustless 14G	Rustless 14G	Rustless 14G	Rustless 14G	Rustless 14G	Stainless 14G	Stainless 14G
TYRES	Vee rubber directional 26" x 1.95"	Vee rubber directional 26" x 1.95"	Vee rubber directional 26" x 1.95"	Ritchey Z Max 26" x 1.95"	Ritchey Z Max 26" x 1.95"	Ritchey Z Max 26" x 1.95"	Ritchey Z Max Kevlar 26" x 1.95"
BAR SYSTEM							
BARS	Saracen Alloy	Saracen Alloy	Saracen Alloy	Ritchey Force Directional	Ritchey Force Directional	Ritchey Force Directional	Ritchey Force Lite
BAR ENDS	-	-	Onza	Onza	Onza	Onza	Onza
GRIPS	Grip shift	Grip shift	Grip shift	Grip shift	Ergo Ring	Ergo Ring	Ergo Ring
STEM	Ultra light chromoly	Ultra light chromoly control stem	Ultra light chromoly control stem	Ritchey Force Directional control stem	Ritchey Force Directional control stem	Tioga Alchemy alloy control stem	Tioga Alchemy alloy control stem
SEAT SYSTEM							
SADDLE	Saracen Comfort System	Saracen Comfort System	Saracen Comfort System	Vetta SP	Vetta SP	Vetta SP	Vetta SP manganese rails
SEAT POST	Saracen Alloy Micro Adjust (26.2mm)	Saracen Alloy Micro Adjust (26.2mm)	Saracen Alloy Micro Adjust (26.2mm)	Saracen Superlight Alloy Micro Adjust (26.2mm)	Saracen Superlight Alloy Micro Adjust (26.2mm)	Saracen Superlight Alloy Micro Adjust (26.2mm)	Saracen Superlight Alloy Micro Adjust (26.2mm)

Saracen Cycles' policy is one of continuous improvement: specifications may therefore be changed without prior notice

RACER 24 FS	KILI TEAM FS	KILI COMP	KILI PRO FS	KILI FLYER FS	KILI XTR FS	KILI ULTRA FS
13", 24" Wheel	16", 17", 18", 19"	16", 17", 18", 19"	16", 17", 18", 19"	16", 17", 18", 19"	16", 17", 18", 19"	15", 17", 19"
Satin Titanium	Satin Titanium	Ultra Violet	Deep Purple	Satin Titanium	Satin Titanium	Natural Titanium
28.25 lbs (12.8 kilos)	24.75lbs (11.25 kilos)	23.5 lbs (10.7 kilos)	24.75 lbs (11.25 kilos)	24.25 lbs (11 kilos)	23.5 lbs (10.7 kilos)	21.75 lbs (9.9 kilos)
FRAME SET						
Tange MTB oversize chromoly Double-butted main tubes	Tange MTB midsize light-weight chromoly/Prestige double-butted frame tubes Competition geometry	Tange MTB midsize light-weight chromoly/Prestige double-butted frame tubes Competition geometry	Tange MTB midsize light-weight chromoly/Prestige double-butted frame tubes Competition geometry	Tange Prestige ultra light/ultra strong midsize Double-butted main tubes Competition geometry	Tange Prestige ultra light/ultra strong midsize Double-butted frame tubes Competition geometry	T1 3AL 2.5 V titanium Competition geometry
Max Shock Elastomer suspension system	Rockshox Quadra Elastomer suspension system	Max Drive Super Light Tange chromoly	Rockshox Quadra Elastomer suspension system	Pace RC35 Alloy/Kevlar Elastomer suspension system	Pace RC35 (titanium kit) Alloy/Kevlar Elastomer suspension system	Pace RC35 (titanium kit) Alloy/Kevlar Elastomer suspension system
Dia-Compe Aheadset system	Tioga Alchemy alloy Aheadset system	Tioga Alchemy alloy Aheadset system	Tioga Alchemy alloy Aheadset system	Tioga Alchemy alloy Aheadset system	Dia-Compe Alloy 'S' cartridge Aheadset system	Dia-Compe Alloy 'S' cartridge Aheadset system
FRAME GEOMETRY (based on 17" frame)						
69°	71°15'	71°	71°15'	71°15'	71°15'	71°15'
72°	74°	74°	74°	74°	74°	74°
41" (16.15")	419mm (16.5")	419mm (16.5")	419mm (16.5")	419mm (16.5")	419mm (16.5")	419mm (16.5")
500mm (19.7")	565mm (22.25")	565mm (22.25")	565mm (22.25")	565mm (22.25")	565mm (22.25")	565mm (22.25")
280mm (11")	310mm (12.25")	292mm (11.5")	310mm (12.25")	310mm (12.25")	310mm (12.25")	310mm (12.25")
DRIVE TRAIN						
Shimano MJ Compact Drive 42-34-24	Shimano Deore LX Compact Drive 42-32-22	Shimano Deore LX Compact Drive 42-32-22	Shimano Deore LX Compact Drive 42-32-22	Shimano Deore XT Compact Drive 44-32-22	Shimano XTR 46-36-26	Shimano XTR 46-36-26
Shimano BBLP 20 Cartridge	Shimano BBUN 51 Cartridge	Shimano BBUN 51 Cartridge	Shimano BBUN 51 Cartridge	Shimano BBUN 71 Cartridge	Royce Titanium	Royce Titanium
Tioga Surefoot 31 with toeclips & straps	VP 180 alloy with toeclips & straps	VP 180 alloy with toeclips & straps	VP 180 alloy with toeclips & straps	VP 180 alloy with toeclips & straps	VP 180 alloy with toeclips & straps	VP 180 alloy with toeclips & straps
GEAR SYSTEM						
Shimano MJ	Shimano Deore LX	Shimano Deore XT	Shimano Deore XT	Shimano Deore XT	Shimano XTR	Shimano XTR
Grip shift SRT 300i Juvenile	Shimano Deore LX Rapidfire Plus	Grip shift SRT 500 Tomac 8 speed	Grip shift SRT 500 Tomac 8 speed	Shimano Deore XT Rapidfire Plus	Shimano XTR Rapidfire Plus	Shimano XTR Rapidfire Plus
BRAKE SYSTEM						
Shimano MJ 'M' system	Shimano 'M' system	Shimano 'M' system	Shimano 'M' system	Shimano Deore XT 'M' system	Shimano XTR 'M' system	Shimano XTR 'M' system
Tektro 2 finger	Shimano Deore LX 2 finger	Ritchey 2 finger	Ritchey 2 finger	Shimano Deore XT 2 finger	Shimano XTR 2 finger	Shimano XTR 2 finger
WHEELS						
Alloy 19 Alloy 24" 36 hole	Ritchey Rock 440 32 hole	Ritchey Rock 440 32 hole	Ritchey Rock 440 32 hole	Ritchey Rock 395 32 hole	Ritchey Rock 395 32 hole	Ritchey Rock 395 32 hole
Shimano MJ Parallax Nut	Shimano STX Parallax QR	Shimano Deore XT Parallax QR	Shimano Deore XT Parallax QR	Shimano Deore XT Parallax QR	Shimano XTR QR	Shimano XTR QR
Shimano CSHG 50 6 speed 12-24	Shimano CSHG 70C 7 speed 11.28	Shimano Deore XT 8 speed 11.28	Shimano Deore XT 8 speed 11.28	Shimano Deore XT 8 speed 11.28	Shimano XTR 8 speed 12.28	Shimano XTR 8 speed 12.28
Rustless 14G	Stainless double-butted	Stainless double-butted	Stainless double-butted	Stainless double-butted	Stainless double-butted	Stainless double-butted
Vee rubber directional 24" x 1.95"	Ritchey Z Max Kevlar 26" x 1.95"	Ritchey Z Max Kevlar 26" x 1.95"	Ritchey Z Max Kevlar 26" x 1.95"	Ritchey Z Max Kevlar WCS 26" x 1.9"	Ritchey Z Max Kevlar WCS 26" x 1.9"	Ritchey Z Max Kevlar WCS 26" x 1.9"
BAR SYSTEM						
Saracen Alloy	Ritchey Force Lite	Ritchey Force Lite	Ritchey Force Lite	Ritchey Pro Lite	Ritchey Pro Lite WCS	Ritchey Pro Lite WCS
—	Ballistic chromoly lightweight	Ballistic chromoly lightweight	Ballistic chromoly lightweight	Ballistic chromoly lightweight	Ballistic titanium	Ballistic titanium
Grip shift juvenile	Ritchey Pro WCS	Grip shift Tomac	Grip shift Tomac	Ritchey Pro WCS	Ritchey Pro WCS	Ritchey Pro WCS
Ultra light chromoly control stem	Ritchey Force Lite chromoly Competition control stem	Ritchey Force Lite chromoly Competition control stem	Ritchey Force Lite chromoly Competition control stem	Ritchey Force Lite chromoly Competition control stem	Ritchey Force Lite chromoly Competition control stem	Ritchey Force Lite chromoly Competition control stem
SEAT SYSTEM						
Saracen Comfort System	Vetta TT manganese rails	Vetta TT manganese rails	Vetta TT manganese rails	Vetta TT manganese rails	Vetta SL titanium rails	Vetta SL titanium rails
Saracen Alloy Micro Adjust (26.2mm)	USE alloy	USE alloy	USE alloy	USE alloy	USE titanium	USE titanium

Weights are based on 15"/16" frame size without pedals

MTB-speak: The Saracen Guide

Newcomers to the sport often complain about the amount of jargon used by seasoned mountain bike enthusiasts. To help you get up to speed with the technical terms, and to enable you to make a more informed purchasing decision, we've summarised and explained below the specialist terms used in this catalogue.

Who's who on your bike: Saracen have scoured the world to bring you the finest components for your bike. Our list of manufacturers (Alesa, Ballistic, Bontrager, Dia-Compe, Gripshift, Max Shock, Onza, Pace, Ritchey, Rock Shox, Royce, Shimano, Tange, Tioga, USE, Vee and Vetta) includes the most respected names in MTB componentry — your guarantee that Saracen fit only the best, whatever the price point.

What's what on your bike: You'll be looking for optimum strength and minimum weight, fast gear shifting and effective braking, easy maintenance and positive steering. Saracen bikes use the latest manufacture and rider technology, including:

- Cartridge BB Set: A sealed for life maintenance free bottom bracket bearing assembly.
- Double-Butted Tubing: By reducing the thickness of frame tubing in the centre of its length, where there's less stress, double butting reduces weight without sacrificing strength.
- Groupset: Coordinated gear, chainset and braking system from the same manufacturer.
- M-System Brakes: Shimano's new improved system for consistent all weather braking.
- Midsize Tubing: An innovation in tubing technology that delivers all the strength of full oversize tubing, but with a narrower external diameter.
- Oversized Frame Tubing: Bigger diameter tubes for off-road strength with decreased wall thickness to save weight.
- Rapidfire Plus: Shimano under bar trigger gear shifters - push trigger for down shift, pull for up shift.

Space age technology: Many ultra-strong ultra-light materials were pioneered by the aerospace industry. Through their use, Saracen are able to produce low weight bikes without compromising their ability to handle the most rugged terrain.

- Chromoly: An advanced high strength steel with added chromium and molybdenum to produce an outstanding strength to weight ratio. Now accepted as the optimum material for mountain biking.
- Elastomer: Lightweight and highly reliable suspension system, which uses Elastopolymer synthetic rubber to provide both spring and damping mediums. Major advantages over other systems in ease of servicing.
- Epoxy polyester powder coating: Saracen's famous heat-treated frame finish is the industry's toughest. Not only does your Saracen look better for it — it protects it from scratches and knocks when the going gets rough.
- Kevlar: A synthetic material first developed for NASA's space programme, it combines very low weight with the strength properties of steel, and its used to create ultra-lightweight high performance tyres.
- Prestige: A high grade heat-treated chromoly used on the Kili Team FS, Kili Comp and Kili Pro FS. Saracen also use top grade Prestige ultra light/ultra strong for the frames of the Kili Flyer FS and Kili XTR FS.
- Titanium: Lightweight high strength metal used widely in the aerospace industry. The ultimate mountain bike material.

European Distributors

Germany Delta-Sports GmbH
Further Str 33, 90513 Zindorf, Germany
Tel: 0911 600 2241 • Fax: 0911 600 2278

Switzerland Delta-Sports AG
Eichweg 4, 8154 Oberglatt, Switzerland
Tel: 01 850 64 65 • Fax: 01 850 64 88

Austria RAD Studio Krems
Hafnerplatz 5, A-3500 Krems, Austria
Tel: 027 32 81880 • Fax: 027 32 81880

Belgium Yvan Vercouillie
St Jansstraat 21-23, 8970 Poperinge, Belgium
Tel: 32 57 33 54 90 • Fax: 32 57 33 84 81

YOUR LOCAL SARACEN DEALER

RetroBIKE
If it's Old School It's in
Retro, Vintage and Classic Mountain, Road and BMX bikes

Frame Geometry

- Angles given are those based on a notional straight top tube.
- Saracen frame geometry is variable and angles and dimensions given are based on 17" frame size.
- Frame sizes are measured from centre of bottom bracket to centre point of top tube along the seat tube.
- Weight will vary according to size.

Size Guide

Saracen frames are measured from the centre of the bottom bracket axle to the centre point of the top tube along the seat tube.

The size chart gives a guide to frame sizes against height. However, as inside leg measurements and reach vary, we recommend that all bikes are tried for size before purchase.

Frame Size	Height
13"	Age 10-13 years
14½"-15"	5'0"-5'5"
15½"-16"	5'5"-5'8"
17"-18"	5'8"-6'0"
19"	6'0"+

Warranty

Saracen Cycles has an excellent non-return record due to 100% of all our components being assembled in our workshops prior to delivery to the retailer. This permits us to offer you the following comprehensive warranty:

Saracen Cycles Ltd warrants the replacement of original components of Saracen Mountain Bikes due to defects in material and/or workmanship according to the following conditions and limitations: The frame and forks are warranted for a period of 5 years (in the case of suspension forks, 1 year). The original components, other than the frame and forks, are warranted for a period of 1 year (labour and transportation charges are not included). The warranty is limited to the original retail purchaser only and proof of purchase is required to validate this warranty.

The warranty does not cover damage or failure due to abuse, neglect, accident, improper re-assembly, maintenance or commercial hiring, normal wear and tear or installation of parts or accessories not originally intended for or incompatible with the bicycle as sold.

Saracen Cycles Ltd shall not be responsible for accidental or consequential damage or loss. The user assumes the risk for any and all personal injury or damage of the bicycle, or other losses if Saracen bicycles are used at any time in any competitive event (including bicycle racing, dirt biking, freestyle or similar activities or training for such activities).

Claims must be made through an authorised dealer.

Saracen Cycles' policy is one of continuous improvement; therefore specifications may be changed, without prior notice.

Mountain bikes, although tough, are not indestructible. Excessively rough use may result in damage to your machine or you — take care and always wear an approved helmet. Optimum riding performance depends on having your bike serviced regularly at your Saracen dealer.

SARACEN