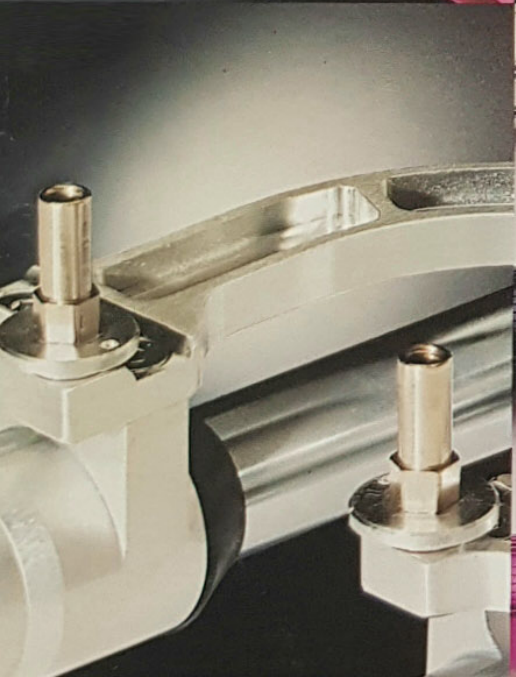




1994 ANSWER MOUNTAINBIKE CATALOG



MANITOU3 SUSPENSION FORK



Over-size Easton® Taperwall aluminum legs are Teflon® impregnated for flex free, low friction performance.



Six stack elastopolymer carrier gives Manitou3 a friction free, rapid response to all types of terrain.

MANITOU3 SUSPENSION FORK

85-6000	1 x 5.5" (140mm)
85-6001	1 x 6.5" (165mm)
85-6002	1 x 7.5" (190mm)
85-6003	1 x 8.5" (215mm)
85-6005	1 x 12" THREADED
85-6010	1.125 x 5.5" (140mm)
85-6011	1.125 x 6.5" (165mm)
85-6012	1.125 x 7.5" (190mm)
85-6013	1.125 x 8.5" (215mm)
85-6015	1.125 x 12" THREADED
85-6020	1.250 x 5.5" (140mm)
85-6021	1.250 x 6.5" (165mm)
85-6022	1.250 x 7.5" (190mm)
85-6023	1.250 x 8.5" (215mm)
85-6024	1.250 x 10" (254mm)
85-6025	1.250 x 12" THREADED

MANITOU3 CROWN/STEEPER ASSEMBLIES

85-3400	1 x 5.5" (140mm)
85-3401	1 x 6.5" (165mm)
85-3402	1 x 7.5" (190mm)
85-3403	1 x 8.5" (215mm)
85-3404	1 x 12" THREADED
85-3410	1.125 x 5.5" (140mm)
85-3411	1.125 x 6.5" (165mm)
85-3412	1.125 x 7.5" (190mm)
85-3413	1.125 x 8.5" (215mm)
85-3414	1.125 x 12" THREADED
85-3420	1.250 x 5.5" (140mm)
85-3421	1.250 x 6.5" (165mm)
85-3422	1.250 x 7.5" (190mm)
85-3423	1.250 x 8.5" (215mm)
85-3424	1.250 x 12" THREADED

INTRODUCING MANITOU3. PERFECT FOR SMALL BUMPS. PERFECT FOR BIG JUMPS.

NEW SEQUENTIAL DUAL-STAGE DAMPING™ SYSTEM MAKES MANITOU3 THE BEST SUSPENSION FORK EVER.

STAGE ONE: NEW LONG STACK/SHORT ELASTOPOLYMER TECHNOLOGY ADVANCES THE SMALL BUMP PERFORMANCE THAT MANITOU2 SET THE STANDARD FOR.

STAGE TWO: SECOND STAGE DAMPING ALLOWS MANITOU3 TO ABSORB HIGH SPEED, BIG HITS BETTER THAN AIR/OIL SYSTEMS - WITHOUT THEIR INHERENT UNDEPENDABILITY. HAVE IT ALL, IN MANITOU3.

MANITOU3 SUSPENSION FORK



Easy access top loading control rods offer hassle free user performance programmability.



Easton Taperwall tubing reduces weight 3 ounces compared to Manitou2.



Interlocking brake arch synchronizes leg movements.

- SEQUENTIAL DUAL-STAGE DAMPING™ SYSTEM ABSORBS ALL BUMPS SMALL AND LARGE
- 2" OF TRAVEL WITH 2-1/2" CONVERSION INCLUDED • TEFLON COATED LEGS FOR LOWEST FRICTION OF ANY FORK
- INTERLOCKING FORGED BRAKE ARCH SYNCHRONIZES LEG MOVEMENT • BACKED BY ANSWER'S TWO-YEAR OFF-ROAD WARRANTY
- LIFETIME WARRANTY ON ELASTOPOLYMERS • MADE IN U.S.A. • PATENT PENDING

PRO FORX SUSPENSION FORKS



Pro Forx LT -
3 full
inches
of travel
for all out,
kamikaze
type runs.



PROFORX - LT

84-4400	1 x 5.5" (140mm)
84-4401	1 x 6.5" (165mm)
84-4402	1 x 7.5" (190mm)
84-4403	1 x 8.5" (215mm)
84-4405	1 x 12" THREADLESS
84-4410	1.125 x 5.5" (140mm)
84-4411	1.125 x 6.5" (165mm)
84-4412	1.125 x 7.5" (190mm)
84-4413	1.125 x 8.5" (215mm)
84-4415	1.125 x 12" THREADLESS
84-4420	1.250 x 5.5" (140mm)
84-4421	1.250 x 6.5" (165mm)
84-4422	1.250 x 7.5" (190mm)
84-4423	1.250 x 8.5" (215mm)
84-4425	1.250 x 12" THREADLESS

HOW MUCH SUSPENSION TRAVEL DO YOU REALLY NEED?

PRO FORX™ DELIVERS ALL YOU NEED AND MORE. DUAL ELASTOMER AND SPRING DAMPING PROVIDES OUTSTANDING SHOCK ABSORPTION AND REBOUND CONTROL THROUGH UP TO 3 FULL INCHES OF TRAVEL.

WITH MOTORCYCLE STRENGTH DU TOP BEARING AND INDUSTRIAL STRENGTH TEFLON, PRO FORX IS RELIABLE AND VIRTUALLY MAINTENANCE FREE. BUILT IN AMERICA WITH QUALITY TO LAST AND BACKED BY ANSWER'S TWO-YEAR OFF ROAD WARRANTY.

PRO FORX SUSPENSION FORKS



Pro Forx ST -
2.1 inches
of fast
response
travel.
Perfect for
fire roads,
washboard
dry
river beds
and high
angle climbs.



ProForx BMX. Finally true suspension technology is available to BMX specialists

HIGHLIGHTS:

- THREE MODELS -ST (2.1" TRAVEL), LT (3.0" TRAVEL), BMX
- FULLY ADJUSTABLE - PRE-LOAD CAN BE ADJUSTED TO FINE TUNE PERFORMANCE
- NO AIR, NO OIL, NO LEAKS
- MOTORCYCLE STRENGTH DU COMPOSITE BEARINGS
- MADE IN U.S.A.

ProFork - BMX

- 84-4000 1 x 140MM (26.4) SILVER
- 84-4001 1 x 140MM (26.4) PURPLE
- 84-4100 1 x 140MM CRUISER

ProFork - ST

- 84-4200 1 x 5.5" (140MM)
- 84-4201 1 x 6.5" (165MM)
- 84-4202 1 x 7.5" (190MM)
- 84-4203 1 x 8.5" (215MM)
- 84-4205 1 x 12" THREADLESS
- 84-4210 1.125 x 5.5" (140MM)
- 84-4211 1.125 x 6.5" (165MM)
- 84-4212 1.125 x 7.5" (190MM)
- 84-4213 1.125 x 8.5" (215MM)
- 84-4215 1.125 x 12" THREADLESS
- 84-4220 1.250 x 5.5" (140MM)
- 84-4221 1.250 x 6.5" (165MM)
- 84-4222 1.250 x 7.5" (190MM)
- 84-4223 1.250 x 8.5" (215MM)
- 84-4225 1.250 x 12" THREADLESS

MANITOU SPORT SUSPENSION

Proven elastomer technology won't leak out and leave you stranded.



MANITOU SPORT SUSPENSION FORK

85-7000	1 x 5.5" (140mm)
85-7001	1 x 6.5" (165mm)
85-7002	1 x 7.5" (190mm)
85-7003	1 x 8.5" (215mm)
85-7006	1 x 12" THREADLESS
85-7010	1.125 x 5.5" (140mm)
85-7011	1.125 x 6.5" (165mm)
85-7012	1.125 x 7.5" (190mm)
85-7013	1.125 x 8.5" (215mm)
85-7015	1.125 x 12" THREADLESS
85-7020	1.250 x 5.5" (140mm)
85-7021	1.250 x 6.5" (165mm)
85-7022	1.250 x 7.5" (190mm)
85-7023	1.250 x 8.5" (215mm)
85-7025	1.250 x 12" THREADLESS



THE ALL NEW MANITOU SPORT.

WE'VE TAKEN THE EASTON® TEFLON® COATED LEGS TECHNOLOGY FROM THE MANITOU3 AND THE ELASTOMER SYSTEM OF THE MANITOU2; TO COME UP WITH A HIGH PERFORMANCE, LOW COST, 2.95 POUND PACKAGE.

- HARD AND SOFT RIDE KITS OFFER USERS THE ABILITY TO CUSTOM TUNE THEIR RIDE
- EASTON ProGram™ ALUMINUM CONSTRUCTION INSURES LIGHTEST WEIGHT
- MADE IN THE U.S.A. AND FULLY BACKED BY ANSWER'S TWO-YEAR OFF-ROAD WARRANTY

HYPERLITE / TAPERLITE BARS



Racer
 extraordinaire
 Greg Herbold
 knows all
 about the
 Hyperlite
 advantages -
 that's why he
 uses them!



HYPERLITE HANDLEBARS	
03-8003	NATURAL, 3° BEND
03-8004	BLACK ANODIZED, 3° BEND
03-8005	PURPLE ANODIZED, 3° BEND
03-8103	NATURAL, 5° BEND
03-8104	BLACK ANODIZED, 5° BEND
03-8105	PURPLE ANODIZED, 5° BEND

TAPERLITE2 HANDLEBARS	
03-6200	BLACK, 3° BEND
03-6201	NATURAL, 3° BEND
03-6202	GOLD, 3° BEND
03-6220	BLACK, 5° BEND
03-6221	NATURAL, 5° BEND
06-6222	GOLD, 5° BEND

THIS TIME THEY'VE GONE TOO FAR. CROSSING THE 140G BARRIER HAS TAKEN OUR HANDLEBAR COMPETITORS INTO DANGEROUS TERRITORY - WHERE DISASTER CAN OCCUR WITH A SUDDEN SNAP. AT 148G, HYPERLITE IS RESPONSIBLY LIGHT WITHOUT SACRIFICING STRENGTH. HYPERLITE'S EXCLUSIVE EASTON TAPERWALL DESIGN MAKES IT THE MOST TRUSTED BAR IN CYCLING. • TAPERLITE2 CAPTURES ALL OF HYPERLITE'S FEATURES IN AN ECONOMICAL ALUMINUM ALLOY. • INTERNALLY TAPERED WALLS BUILD IN STRENGTH WHILE REDUCING WEIGHT (148G/HYPERLITE, 195G/TAPERLITE2) • FULL 23" WIDTH • MADE IN U.S.A., COVERED BY ANSWER'S 2-YEAR WARRANTY

ATAC STEMS

ATAC stems are handmade in Valencia, California, USA by craftsmen who care and who's quality you can depend on.

ATAC ALUMINUM STEMS

FOR 1" (STANDARD) HEADSETS

85-2000	BLACK, 120MM X 25°
85-2003	NATURAL, 120MM X 25°
85-2010	BLACK, 135MM X 17°
85-2013	NATURAL, 135MM X 17°
85-2014	PURPLE, 135MM X 17°
85-2020	BLACK, 150MM X 10°
85-2023	NATURAL, 150MM X 10°
85-2024	PURPLE, 150MM X 10°

FOR 1.125" (OVERSIZE) HEADSETS

85-2100	BLACK, 120MM X 25°
85-2103	NATURAL, 120MM X 25°
85-2110	BLACK, 135MM X 17°
85-2113	NATURAL, 135MM X 17°
85-2114	PURPLE, 135MM X 17°
85-2120	BLACK, 150MM X 10°
85-2123	NATURAL, 150MM X 10°
85-2124	PURPLE, 150MM X 10°

FOR 1.250 (EVOLUTION) HEADSETS

85-2200	BLACK, 120MM X 25°
85-2203	NATURAL, 120MM X 25°
85-2210	BLACK, 135MM X 17°
85-2213	NATURAL, 135MM X 17°
85-2214	PURPLE, 135MM X 17°
85-2220	BLACK, 150MM X 10°
85-2223	NATURAL, 150MM X 10°
85-2224	PURPLE, 150MM X 10°

ATAC NO RISE STEMS

FOR 1" (STANDARD) HEADSETS

85-2300	NATURAL, 135MM X 0°
85-2301	NATURAL, 150MM X 0°
85-2306	PURPLE, 135MM X 0°
85-2307	PURPLE, 150MM X 0°

FOR 1.125" (OVERSIZE) HEADSETS

85-2302	NATURAL, 135MM X 0°
85-2303	NATURAL, 150MM X 0°
85-2308	PURPLE, 135MM X 0°
85-2309	PURPLE, 150MM X 0°

FOR 1.250 (EVOLUTION) HEADSETS

85-2304	NATURAL, 135MM X 0°
85-2305	NATURAL, 150MM X 0°
85-2310	PURPLE, 135MM X 0°
85-2311	PURPLE, 150MM X 0°

ATAC STEMS FOR THREADLESS HEAD SETS

FOR 1" (STANDARD) A-HEADSETS

85-2340	NATURAL, 135MM X 0°
85-2342	NATURAL, 150MM X 0°

FOR 1.125" (OVERSIZE) A-HEAD SETS

85-2344	NATURAL, 135MM X 0°
85-2346	NATURAL, 150MM X 0°

FOR 1.250" (EVOLUTION) A-HEADSETS

85-2348	NATURAL, 135MM X 0°
85-2350	NATURAL, 150MM X 0°



MOUNTAIN BIKE ACTION FOUND THAT THE ORIGINAL ATAC STEM DELIVERED

"THE HIGHEST LEVELS OF TORSIONAL RIGIDITY AND SHOCK ABSORPTION." TODAY'S ATAC GOES EVEN FURTHER - WHICH MAKES IT EVEN FASTER.

OVERSIZED CONSTRUCTION TRANSLATES STEERING INPUTS INTO PRECISE ACTION.

SHOCK ABSORPTION KEEPS YOU RIDING STRONGER, MILE AFTER MILE. WITH AN ATAC STEM, YOU'RE ARMED TO GO ON THE ATTACK.

MANITOU STEMS



MANITOU ALUMINUM STEMS FOR THREADLESS HEADSETS

FOR 1.125" (OVERSIZE) HEADSETS
85-2400 NATURAL, 120MM X 10"
85-2410 NATURAL, 140MM X 10"

FOR 1.250 (EVOLUTION) HEADSETS
85-2420 NATURAL, 120MM X 10"
85-2430 NATURAL, 140MM X 10"

FROM THE REVOLUTIONARY MIND OF DOUG BRADBURY COMES A NEW WAY TO HOLD YOUR HANDLEBAR
THE MANITOU STEM. PRECISION CNC MACHINED FROM SOLID ALUMINUM BILLET, THE MANITOU STEM BOASTS CROSS BEAM CONSTRUCTION FOR STRENGTH AND INTERNAL PINCH BOLTS FOR A SMOOTH, UNDISTURBED OUTER FINISH. THE MANITOU STEM TIPS THE SCALES AT FEATHER WEIGHTS TO HELP MINIMIZE THE WEIGHT OF YOUR CONTROL SYSTEMS. MADE IN U.S.A.

HYPEREND BAR ENDS



HyperEnds utilize our patented APS dual side clamping system. By gripping the handlebar from inside and outside, HyperEnds can be mounted tighter without fear of crushing the bar.

HYPEREND™ BAR ENDS

83-5000	PURPLE HILL BEND
83-5001	NATURAL HILL BEND
83-5002	BLACK HILL BEND
83-5003	BLUE HILL BEND
83-5010	PURPLE XC BEND
83-5011	NATURAL XC BEND
83-5012	BLACK XC BEND
83-5013	BLUE XC BEND
83-5020	PURPLE GUARDIAN BEND
83-5021	NATURAL GUARDIAN BEND
83-5022	BLACK GUARDIAN BEND
83-5023	BLUE GUARDIAN BEND

AVAILABLE IN THREE BENDS - GUARDIAN, HILL, XC



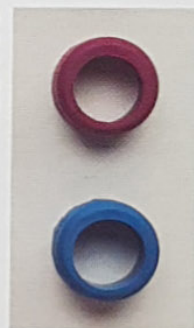
INTRODUCING THE END FOR ALL HANDLEBARS - THE HYPERENDS™.

- BEAD BLASTED FINISH CREATES A HIGH TRACTION GRIPPING SURFACE • MADE IN U.S.A.
- LIGHTWEIGHT - HILL™ (158G/PAIR); XC™ (165G/PAIR); GUARDIAN™ (170G/PAIR)
- 1" DIAMETER TUBING (COMPARED TO STANDARD 7/8") FITS HANDS BETTER AND OFFERS LARGER SURFACE TO GRIP

AGGRESSOR & LOGO GRIPS



Eccentric design of our new Logo Grips puts added padding in the palm of your hand, while keeping overall grip diameter small



AGGRESSOR™ GRIPS
 82-0000 BLACK
 82-0001 PINK
 82-0003 BLUE
 82-0004 PURPLE

ANSWER LOGO GRIPS
 82-1010 RED
 82-1011 BLACK
 82-1012 BLUE
 82-1013 PURPLE
 82-1014 CLEAR*
 *COMING OCTOBER 1993



KRATON-G THERMOPLASTIC IS MOLDED BY ANSWER TO OUR NEW ANSWER LOGO GRIP AND THE CYCLING CLASSIC, THE ANSWER AGGRESSOR GRIP.

- AGGRESSOR GRIPS FEATURE A MUSHROOM/WAFFLE COMBINATION DESIGN FOR SHOCK ABSORBING COMFORT AND HIGH TRACTION CONTROL
- ANSWER LOGO GRIPS HAVE EXTRA PADDING BUILT INTO ONE SIDE FOR ADDED SHOCK ABSORBING COMFORT
- BOTH GRIPS AVAILABLE IN A WIDE ARRAY OF COLORS • MADE IN U.S.A.

ACCELERATOR SHOES



High traction sole runs from heel to toe. SPD compatible with predrilled mounting holes



Sure-Lock ski boot type buckle stays closed, even when soaked with mud

ACCELERATOR SHOES

82-5004	Size 41	
82-5005	Size 41.5	US Size 7.5
82-5006	Size 42	
82-5007	Size 42.5	US Size 8
82-5008	Size 43	US Size 8.5
82-5009	Size 43.5	US Size 9
82-5010	Size 44	US Size 9.5
82-5011	Size 44.5	US Size 10
82-5012	Size 45	US Size 10.5
82-5013	Size 46	US Size 11
82-5015	Size 47	US Size 11.5

TIRED OF SQUEEZING INTO YOUR CYCLING SHOES? TRY OUR ANSWER - OUR ACCELERATOR™ SHOE - BUILT IN ITALY TO FIT AMERICAN FEET.

- STIFF INNER SOLE PROMOTES CYCLING EFFICIENCY
- HIGH TRACTION OUTER SOLE ENHANCES OFF-BIKE RUNNING EXCURSIONS
- SKI-TYPE SURE LOCK BUCKLE LATCH, EVEN IN DIRT AND MUD • BUILT IN TOP STRAP PROMOTES UPSTROKE EFFICIENCY
- SPD COMPATIBLE WITH PRE-DRILLED MOUNTING HOLES

CYCLING JERSEYS & SHORTS



MANITOU JERSEYS

80-2000	SMALL, BLACK/PURPLE
80-2001	MEDIUM, BLACK/PURPLE
80-2002	LARGE, BLACK/PURPLE
80-2003	XLARGE, BLACK/PURPLE

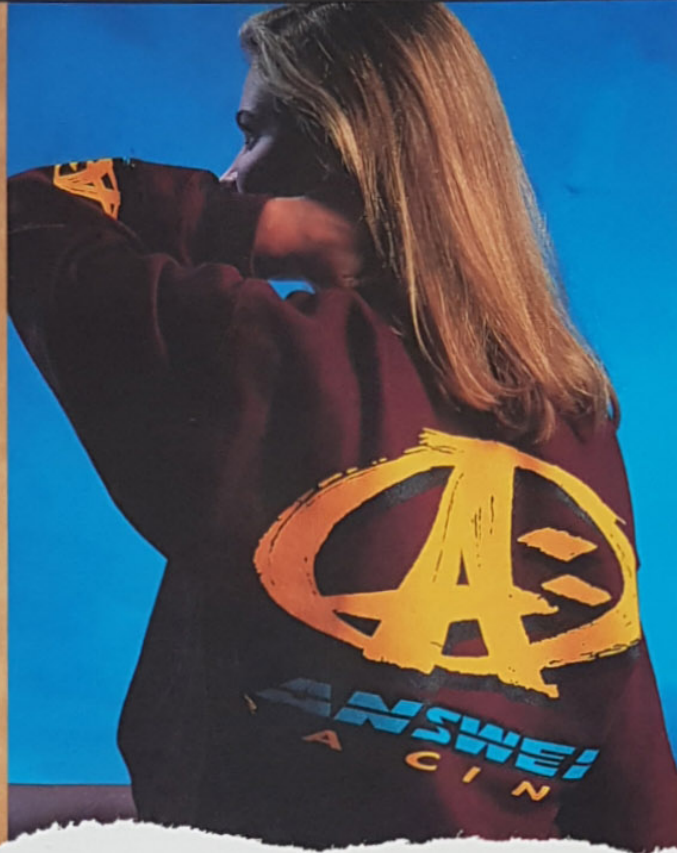
MANITOU SHORTS

80-1000	SMALL, BLACK/PURPLE
80-1001	MEDIUM, BLACK/PURPLE
80-1002	LARGE, BLACK/PURPLE
80-1003	XLARGE, BLACK/PURPLE

RIDE WITH THE BEST-OF-THE-BEST IN CYCLING - THE OFFICIAL ANSWER PRODUCTS/MANITOU TEAM JERSEY.

- DOUBLE LOOP WICK JERSEY LINING PULLS MOISTURE AWAY TO KEEP YOU DRY AND COOL
 - EXTRA DEEP RIDING POCKETS ON JERSEY BACK
- 8 PANEL LYCRA CONSTRUCTION KEEPS SHORTS MOVING COMFORTABLY WITH YOU
- ULTRASOFT LINER IS NON-ABRASIVE AND WICKS MOISTURE AWAY • MADE IN U.S.A.

ANSWER APPAREL



CIRCLE "A" SWEATSHIRT

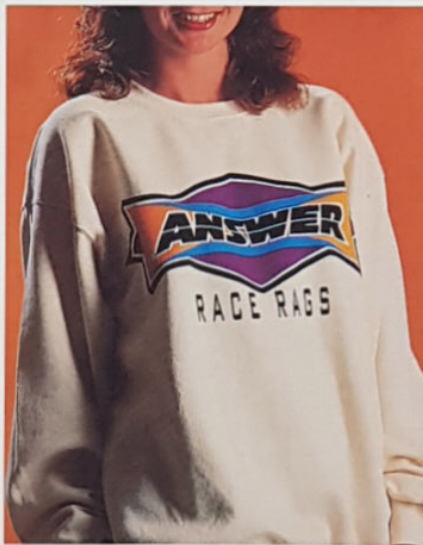
- 20-4010 SMALL
- 20-4011 MEDIUM
- 20-4012 LARGE
- 20-4013 XLARGE

RACE RAGS SWEATSHIRT

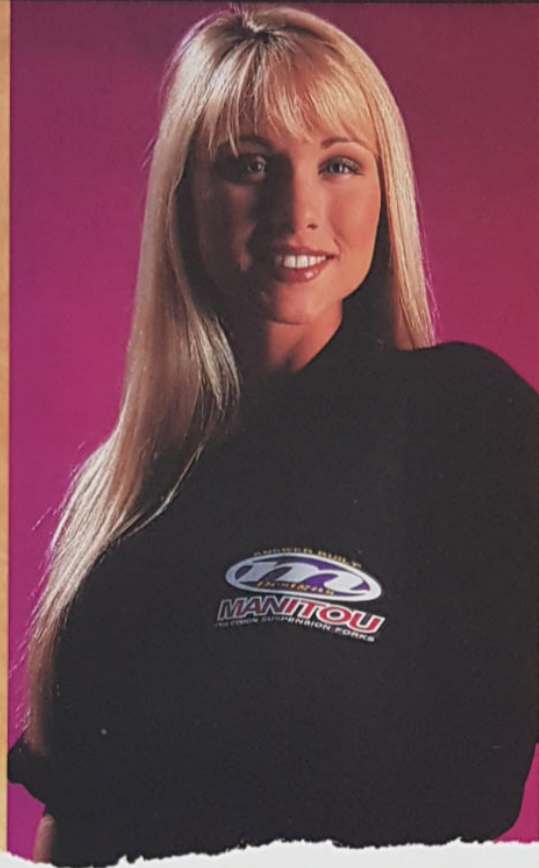
- 20-4000 SMALL
- 20-4001 MEDIUM
- 20-4002 LARGE
- 20-4003 XLARGE

MANTOU EMBROIDERED SWEATSHIRT

- 20-6000 SMALL
- 20-6001 MEDIUM
- 20-6002 LARGE
- 20-6003 XLARGE



ANSWER APPAREL



MANITOU EMBROIDERED TEE (SHOWN ABOVE)

- 17-6000 SMALL
- 17-6001 MEDIUM
- 17-6002 LARGE
- 17-6003 XLARGE



MANITOU DESIGNS TEE

- 17-6400 SMALL
- 17-6401 MEDIUM
- 17-6402 LARGE
- 17-6403 XLARGE



END OF PAVEMENT TEE

- 17-6300 SMALL
- 17-6301 MEDIUM
- 17-6302 LARGE
- 17-6303 XLARGE

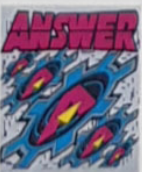


CIRCLE "A"

- 17-6360 SMALL
- 17-6361 MEDIUM
- 17-6362 LARGE
- 17-6363 XLARGE

GALACTIC GEARS

- 17-6260 SMALL
- 17-6261 MEDIUM
- 17-6262 LARGE
- 17-6263 XLARGE



RACE RAGS

- 17-6340 SMALL
- 17-6341 MEDIUM
- 17-6342 LARGE
- 17-6343 XLARGE



ANSWER RACING

- 17-6320 SMALL
- 17-6321 MEDIUM
- 17-6322 LARGE
- 17-6323 XLARGE



INSIGNIA WHITE

- 17-6270 SMALL
- 17-6271 MEDIUM
- 17-6272 LARGE
- 17-6273 XLARGE

INSIGNIA HEATHER

- 17-6280 SMALL
- 17-6281 MEDIUM
- 17-6282 LARGE
- 17-6283 XLARGE



TROPHY GIRL

- 17-6330 SMALL
- 17-6331 MEDIUM
- 17-6332 LARGE
- 17-6333 XLARGE

PROFORX TEE (NOT PICTURED)

- 17-6410 SMALL
- 17-6411 MEDIUM
- 17-6412 LARGE
- 17-6413 XLARGE

ANSWER HATS & SPORT BAGS



BLACK MANITOU HAT
19-5031

BLUE ANSWER RACING CAP
19-5022

BLUE ANSWER RACE RAGS HAT
19-5011

WHITE CORP A: CAP
19-5014

BLACK ANSWER RACE RAGS HAT
19-5012

TEAL CORP A: CAP
19-5013

GREY ANSWER CREST CAP
19-5021

JADE PROFORX CAP
19-5015
(NOT SHOWN)

DIRT GEAR BAG (MAXI)
24-2000

DIRT GEAR BAG (MINI)
24-2002

ANSWER MULTI-POCKET
GEAR BAG
24-2010



ANSWER JACKETS



WINTER JACKET
VIOLET/BLUE
15-6200 SMALL
15-6201 MEDIUM
15-6202 LARGE
15-6203 XLARGE



WINTER JACKET
GREEN/GOLD
15-6210 SMALL
15-6211 MEDIUM
15-6212 LARGE
15-6213 XLARGE



PULL-OVER JACKET
VIOLET/BLUE
15-6220 SMALL
15-6221 MEDIUM
15-6222 LARGE
15-6223 XLARGE



PULL-OVER JACKET
GREEN/GOLD
15-6230 SMALL
15-6231 MEDIUM
15-6232 LARGE
15-6233 XLARGE

MANITOU EMBROIDERED
JACKET
15-6240 SMALL
15-6241 MEDIUM
15-6242 LARGE
15-6243 XLARGE



ANSWER CYCLING JACKETS.

THE OFFICIAL WARM-UP WEAR OF ANSWER - TEAM MANITOU.
BECAUSE CYCLING IS MORE THAN A FAIR WEATHER SPORT.

ANSWER BANNERS/GLOVES



The sign of the times -
Answer Products banner at
NORBA/Grandig Events.
Stop by and visit us when you see it
- we'd like to hear from you



ANSWER BANNERS
51-1230 ANSWER
51-1234 MANITOU
51-1236 PROFORX

WE HAVE STICKERS -
MORE THAN WE CAN LIST.

SEE YOUR LOCAL ANSWER
PRODUCTS DEALER FOR PRICES
AND SELECTION.

ANSWER A-4 REVOLUTION

- GLOVES
- 27-1300 A-4 BLUE XS
 - 27-1301 A-4 BLUE S
 - 27-1302 A-4 BLUE M
 - 27-1303 A-4 BLUE L
 - 27-1304 A-4 BLUE XL
 - 27-1305 A-R BLUE XXL
 - 27-1310 A-4 VIOLET XS
 - 27-1311 A-4 VIOLET S
 - 27-1312 A-4 VIOLET M
 - 27-1313 A-4 VIOLET L
 - 27-1314 A-4 VIOLET XL
 - 27-1315 A-R VIOLET XXL
 - 27-1320 A-4 PURPLE XS
 - 27-1321 A-4 PURPLE S
 - 27-1322 A-4 PURPLE M
 - 27-1323 A-4 PURPLE L
 - 27-1324 A-4 PURPLE XL
 - 27-1325 A-R PURPLE XXL
 - 27-1330 A-4 RED XS
 - 27-1331 A-4 RED S
 - 27-1332 A-4 RED M
 - 27-1333 A-4 RED L
 - 27-1334 A-4 RED XL
 - 27-1335 A-R RED XXL



ANSWER EDGE E-1 GLOVES
New - NOT PICTURED.
ECONOMICAL VENTED NYLON
MESH BACK & THUMB. 3MM
THERMALWELD PADDED BACK.
KNIT FINGERS

- 27-1260 E-1 RED XS
- 27-1261 E-1 RED S
- 27-1262 E-1 RED M
- 27-1263 E-1 RED L
- 27-1264 E-1 RED XL
- 27-1265 E-1 RED XXL
- 27-1270 E-1 BLUE XS
- 27-1271 E-1 BLUE S
- 27-1272 E-1 BLUE M
- 27-1273 E-1 BLUE L
- 27-1274 E-1 BLUE XL
- 27-1275 E-1 BLUE XXL
- 27-1280 E-1 PURPLE XS
- 27-1281 E-1 PURPLE S
- 27-1282 E-1 PURPLE M
- 27-1283 E-1 PURPLE L
- 27-1284 E-1 PURPLE XL
- 27-1285 E-1 PURPLE XXL

ANSWER DISTRIBUTORS

ARGENTINA:

CHARMS S.A. IMPORTADORA
SARMIENTO 1586 2DO PISO "G"
BUENOS AIRES
541-352-142
FAX: 516-483-6440

AUSTRALIA:

STEVE CRAMER PRODUCTS
39 INDUSTRIAL DRIVE (VICTORIA)
BRAESIDE 3195
3-587-2018
FAX: 3-587-1466

AUSTRIA:

MOTOPART
TRIESTER STRA BE 201
WEIN 1230
222-6670-696
FAX: 222-667-6628

CANADA:

R & M WEST
2060 VAN DYKE PLACE
RICHMOND V6X 1X9
604-276-0651
FAX: 604-276-8666

R & M EAST

20 FALCONER DRIVE
MISSISSAUGA L5N 1B1
416-821-1239
FAX: 416-821-4687

COLUMBIA:

INDUSTRIAS OSSA
CARRERA 26 NO. 78-47
SANTAFE DE BOGATA
57-225-377
FAX: 1-231-4286

COSTA RICA:

TIENDA DE MOTOS
50 M NORTE DEL MAS
X MENOS SAN PEDRO
SAN JOSE
506-39-49-50
FAX: 506-25-97-62.

DENMARK:

ETTOL SPORT
GRENAAVEI 670 , SKOEDSTRUP
AARHUS DK-8541
8-699-2038
FAX: 8-699-200

FRANCE:

CRESTLINE INTERNATIONAL
Z.A. BRAYE DE CAU 13821 ,
LA PENNE SUR HUVEANE
33-91-24-78-15
FAX: 33-91-24-87-86

GERMANY:

DELTA
FURTER 39
ZINDORF 8502
911-600-2278
FAX: 911-600-2241

HUNGARY:

VELOTRADE KFT.
CASABE U. 10 1/11
BUDAPEST 1122
36-320-116
FAX: 36-314-731

ITALY:

FREEWHEELING
VIA FAENTINA 213/A ,
48010 FORNACE ZARATTINI
RAVENNA
544462096
FAX: 544455360

JAPAN:

A&F CORPORATION
1-1-9 OKUBUO
SHINJUKU-KY TOKYO 169
33-209-7250
FAX: 33-209-7575

MIZUTANI BICYCLE COMPANY

2-37-16 ADACHIT
ADACHI-KU TOKYO 120
33-840-2158
FAX: 33-840-2151

NEW CALEDONIA:

NEW CYCLES
7, RUE FAIDHERBE
NOUMEA
28-3722
FAX: 27-2050

NEW ZEALAND:

SPORTSPRO RACING
P.O. BOX 331005
TAKAPUNA AUCKLAND
9-486-2355
FAX: 9-489-7712

PACIFIC RIM:

SUN MOTOR GROUP
140 MATRAMAN RAYA ST
JAKARTA 13150
65-21-858-1533
FAX: 65-21-858-2333

SOUTH AFRICA:

PROMOTION PRODUCTS
LONEHILL 2065 (P.O. BOX 505)
JOHANNESBURG
11-705-2186
FAX: 11-465-1336

SPAIN:

DIRT RACING
AVDA MANOTERAS 22 NAVE 8
MADRID 28050
1-766-9094
FAX: 1-373-7651

SWITZERLAND:

SEVYSA
1302 VUFFLENS LA VILLE
ACLENS 1123
21-869-9084
FAX: 21-869-9071

UNITED KINGDOM:

A.T.B. SALES
WHITWORTH ROAD,
ST. LEONARDS ON SEA
EAST SUSSEX TN37 7PZ
424-751-415
FAX: 424-753-566

ANSWER CYCLING PRODUCTS ARE AVAILABLE WORLDWIDE.

FOR FURTHER INFORMATION, CONTACT YOUR LOCAL CYCLING PRODUCTS RETAILER OR ONE OF THESE FINE DISTRIBUTORS.

ANSWER PRODUCTS CUSTOMER SERVICE AND TECHNICAL SUPPORT IS AVAILABLE
MONDAY THROUGH FRIDAY - 9A - 5P PACIFIC TIME.

*The Answer-Manitou
Mountain Bikes.*

New for 1994.



*For further information
contact your local authorized
Manitou frame dealer or call
Answer Products.*

**ANSWER
RACING**

ANSWER PRODUCTS, INC.

27460 AVENUE SCOTT

VALENCIA, CALIFORNIA 91355

INSIDE CALIFORNIA: (805) 257-4411

OUTSIDE CALIFORNIA: (800) 423-0273 • FAX: (805) 257-4011