

RIDGEBACK

WICKEY
Quality Components

705 RRS

COMPETITION

COMP-LITE

P
PERFORMANCE



'The Ridgeback and similarly styled bikes are destined to establish an important new trend in cycling'.

So read the words that first introduced Ridgeback to a waiting world, over a decade ago. That prophecy is now history and 10 years on, Ridgebacks continue to deliver the finest possible mountain bike performance ... to give you the ride of your life.



Competition Series

This is no place for a street bike. Three serious fun machines for aggressive off-road riding.



Mountain Series

Six rugged all terrain bikes designed for the dirt. Off-road & essential.



Light, fast, exhilarating...

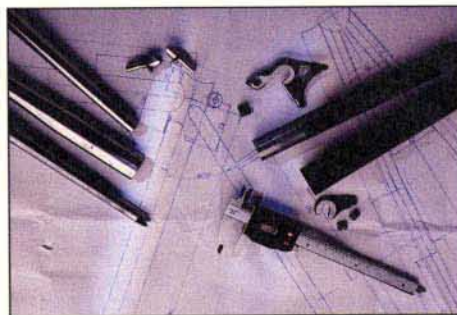
Adventure Series

Comfortable & quick, three great ways to get across town or out on the trail.

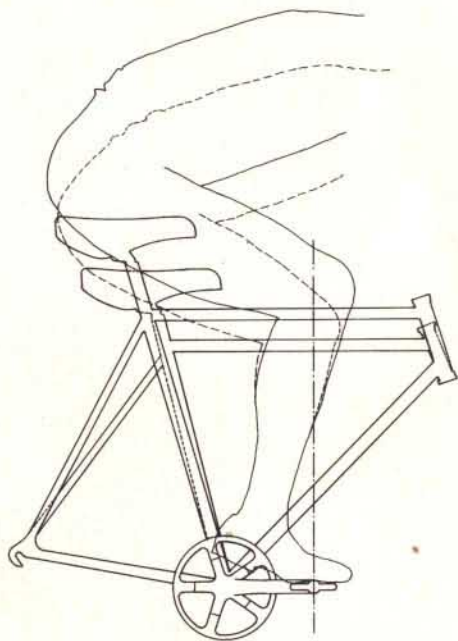


...there's a '93 Ridgeback that's right for you.

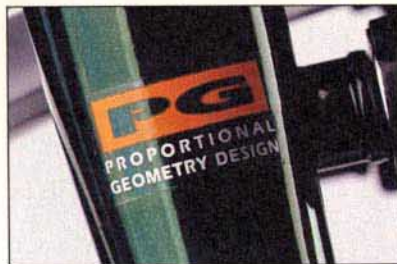
the best fit for a great ride.



Head and seat angles precisely recalculated for each frame size to provide 'custom fit' quality. Larger riders require a shallower



seat angle to maintain correct 'knee over pedal' riding position and use a steeper head angle for sharper handling. Smaller riders need a steeper seat tube combined with a shallower head angle to achieve the same optimum pedalling efficiency. Look for Proportional Geometry. Whatever your height, you can be sure of the best fit, and a great ride.



Protective high gloss paint finish. Eight stage liquid anti-corrosion treatment is followed by electro-static painting & a tough polyester clear coat for a long lasting, durable finish.

Tange Cro-Mo outer butted seat tubes save weight over lugged designs & ensure perfect seat Q/R performance time after time.



Resilient & responsive. Tange Cro Mo tubing builds lighter, tougher, faster bikes. Lifetime warranty.



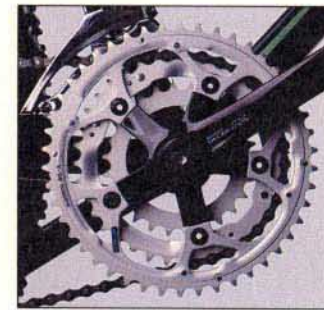
New low friction Snake cable guide provides improved braking response through a more direct cable routing. Cleaner top tube appearance is standard.

Ride Light ...

Ridgeback specifies Shimano's revolutionary new Ride Light components on every model - light weight high precision function for a lighter more responsive ride and a lighter feeling of control.



Slick shifting
HyperGlide drivetrain.



Dual SIS
HyperDrive
performance.



Superb 'one touch' control.
Rapidfire+ shifters for quick,
precise gear changes.

... ride Ridgeback



Powerful 'M'
System brakes
provide dramatic
& consistent
stopping power in
all conditions.



Finger tip
control light
action levers.

Total reliability -
maintenance free
sealed bottom
brackets.



Genuine Shimano low friction
cable guide ensures continuous
smooth gear shift function.



Are you easily shocked?

RST Rapid Suspension Technology forks take the bone jarring sting out of rugged off-road terrain. Rapid response damping provides exceptional control and handling for faster, safer descents, and a significant reduction in rider fatigue. The RST 400's resilient elastomer polymer dampers have a full 1.6" travel and feature an adjustable pre-load for custom tuning to suit rider weight and terrain. Working in close cooperation with



Yamaha and Kawasaki, RST's designers have drawn from a vast wealth of experience, to produce a low maintenance, lightweight suspension fork that really performs. So if you shock easily, fit an RST fork ... it could seriously affect the way you ride your mountain bike. Also available RST 200 - simpler construction rapid response suspension. Fully adjustable and even lighter.

Specification- see inside back cover



Rapid Suspension Technology forks are an option on all Competition and Mountain series Ridgebacks.



Ritchey Logic
Headsets-
Superior strength &
durability with no
additional weight.



Ridgeback specifies Finish
Line high performance
Teflon grease. The only
grease that outlasts all
others by up to three
times-even under the
worst off road conditions.

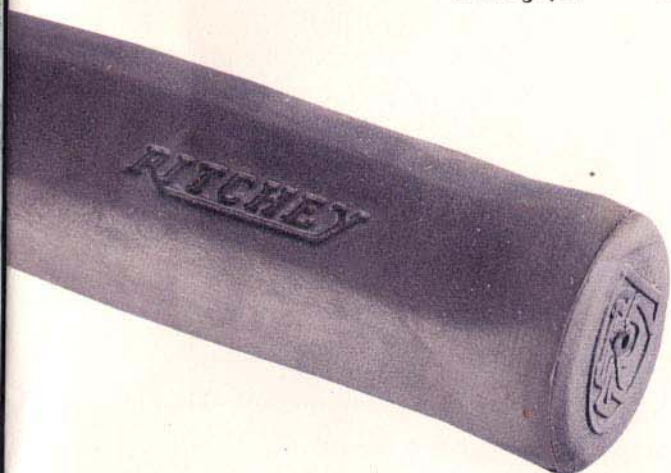


Ritchey Dropouts-
Perfect alignment &
optimal chain wrap.
Cold forged for
strength &
durability.

Ritchey Quality Components

Tom Ritchey has been
establishing new MTB
component standards for over
10 years. His designs are his
competitors goals.

Ritchey True Grips-
Comfortable control. Specially formulated
compound actually helps your hands stick
to the grips.



Ritchey Tyres-
Maximum traction with minimum rolling
resistance and weight. Painstakingly
field tested by Tom & his team
ensures optimum
performance & wear.





COMPETITION series
Uncompromisingly built to take the abuse of fast off-road riding. Responsive Tange Cro Mo frames are constructed to a performance geometry design for the optimum blend of speed, strength and weight. Superb acceleration, great handling and faultless function are standard, as is the supertough Mirrorcoat paint finish. These bikes are flat out performers.

competition

705 RRS

XTR

The complete off road racer. Super responsive Tange frame and Shimano XTR componentry ensures every ounce of effort is converted into forward thrust. Grip the bars, push on the pedals ...

... ready for take off



Frame - Tange special-light (0.9-0.6-0.9mm) double butted Cro-Mo built w/Rithey Logic vertical dropouts, lifetime warranty. Groupset - Shimano XTR.
Wheels - XTR w/Araya RM-17 rims, d/b Stainless spokes, Rithey Z Max tyres 26x2.1". Features - Rithey Logic Expert headset, Ridgeback Comp-Lite stem & Brahma bars, Racelite leather saddle w/Cro Mo rails. Sizes - 15.5, 17.5, 19 inches. Colour - Emerald Mirror. Price - £999.95 w/RST-400 -£1149.90



competition



You need peak performance to pull away from the pack ... Rigid Tange Cro Mo frame with new Shimano Deore LX, Araya RM-17 rims and Ritchey Z Max rubber. Brahma bars, Comp-Lite stem and Ritchey headset up front and a grained leather saddle behind. Control, comfort and serious fun.



Frame - Tange special-light (0.9-0.6-0.9mm) double butted Cro-Mo built w/Ritchey Logic vertical dropouts, lifetime warranty. Groupset - Shimano Deore LX w/Dual SIS Rapidfire+ shifting, 26/36/46 round SG-H chainrings & "M" System brakes. Wheels - Deore LX w/Araya RM-17 rims, d/b stainless spokes, Ritchey Z Max tyres 26x2.1". Features - Ritchey Logic Expert headset, Ridgeback Comp-Lite stem & Brahma bars, Racelite leather saddle w/Cro Mo rails. Sizes - 15.5, 17.5, 19 inches. Colour - Emerald Mirror. Price - £549.95 w/RST-400 £699.98

competition

704RS



Race ready and rearin' to go. Rugged performance for serious off road action. Light Tange frame is specced with an Exage ES groupset for smooth, faultless function under all conditions. Top quality component package includes Ritchey headset and tyres and Araya concave rims.

Frame - Tange special-light (0.9-0.6-0.9mm) double butted Cro-Mo built w/Ritchey Logic vertical dropouts, lifetime warranty. Groupset - Shimano Exage ES w/Dual SIS Rapidfire+ shifting, 26/36/46 round SG-H chainrings & 'M' System brakes. Wheels - Shimano Exage w/Araya CU-7 concave rims, d/b stainless spokes, Ritchey Z Max tyres 26x2.1".

Features - Ritchey Logic headset, Ridgeback Comp-Lite stem & Brahma bars. Sizes - 15.5, 17.5, 19 inches. Colour - Zircon Mirror. Price - £469.95 w/RST-400 £619.98

MOUNTAIN series

Rugged all terrain performance. Lightweight Cro-Mo construction provides necessary strength for tough dirt riding while maintaining minimal weight needed for fast acceleration and great hill climbing. Shimano Ride Light groupsets and race proven Ritchey componentry ensure total rider control and a smooth, comfortable ride ... whatever the conditions.



mountain



Serious off-road capability. New lighter weight double butted Cro Mo frame with Shimano Exage componentry. Comp-Lite Cro Mo stem, Ritchey Logic headset and Megabite tyres guarantee sharp handling whatever the situation.



Frame - Tange special-light (0.9-0.6-0.9mm) double butted Cro-Mo, lifetime warranty.

Groupset - Shimano Exage LT w/Dual SIS Rapidfire+ shifting, 26/36/46 round SG-R chainrings & 'M' System brakes. Wheels - Shimano Exage w/Araya UP-20 rims, Ritchey Megabite tyres 26x2.1".

Features - Ritchey Logic headset, Ridgeback Comp-Lite stem, w/170g aluminium bars. Sizes - 15.5, 17.5, 19, 20.5 inches. Colour - Titanium pearl. Price - £379.95 w/RST-400 £529.90

mountain



All the strength to handle real rough terrain adventures ... and more. Light double butted Cro Mo frame and Shimano Altus groupset combine for a comfortable ride without sacrificing pedalling efficiency. Araya UP-20 'U' section rims and Ritchey Mod Quad tyres are standard, as are 170g Comp-Lite handlebars.



Frame - Tange special-light (0.9-0.6-0.9mm) double butted Cro-Mo, lifetime warranty.

Groupset - Shimano Altus A20 w/Dual SIS Rapidfire+ shifting, 28/38/48 round SG-X chainrings & 'M' System brakes. Wheels - Shimano Altus w/Araya UP-20 rims, Ritchey Mod Quad tyres 26x2.0".

Features - Ridgeback Comp-Lite stem, w/170g aluminium bars, Ritchey True grips. Sizes - 15.5, 17.5, 19, 20.5 inches. Colour - Aqua pearl. Price - £339.95 w/RST-400 £489.90

mountain



Truly an all-terrain bike. Shimano Rapidfire+ shifting and quick handling Cro Mo frame provide a balanced mix of comfort and control. Powerful Shimano 'M' system brakes ensure safe stopping in all conditions. Genuine Ridgeback performance on or off-road.



Frame - Tange light Cro-Mo, lifetime warranty. Groupset - Shimano Altus C10 w/ R20 Dual SIS Rapidfire+ shifting, 28/38/48 round SG-R chainrings & 'M' System brakes.

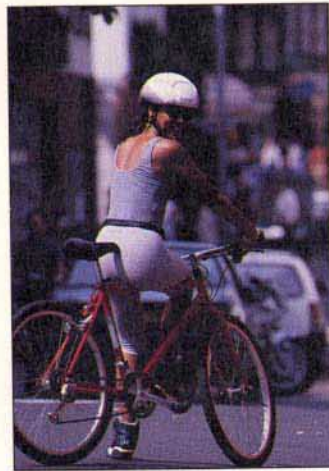
Wheels - Shimano Altus w/ Araya MP-22 rims, Ritchey Mod Quad tyres 26x2.0".

Features - Ritchey True grips, toe clips & straps. Sizes - 15.5, 17.5, 19, 20.5 inches. Colour - Blue pearl. Price - £299.95 w/ RST-200 £399.90

mountain

601GS

Excellent handling and ride quality. Shimano Altus componentry with push button Rapidfire shifters for razor sharp gear changes. Grippy 'Smoke' tyres get the power down on even the roughest terrain whilst providing cushioned shock absorbing comfort. Road or trail, the 601 offers long lasting performance and excellent value.



Frame - Tange light Cro-Mo, lifetime warranty. Groupset - Shimano Altus C20 w/Dual SIS Rapidfire shifting, 28/38/48 round SG-X chainrings & 'M' System brakes.
Wheels - Q/R w/Araya MP-22 rims, 'SMOKE' tyres 26x2.0". Features - Ritchey True grips. Sizes - 15.5, 17.5, 19, 20.5 inches. Colour - Ruby pearl. Price - £249.95 w/RST-200 £349.90

mountain

401GS



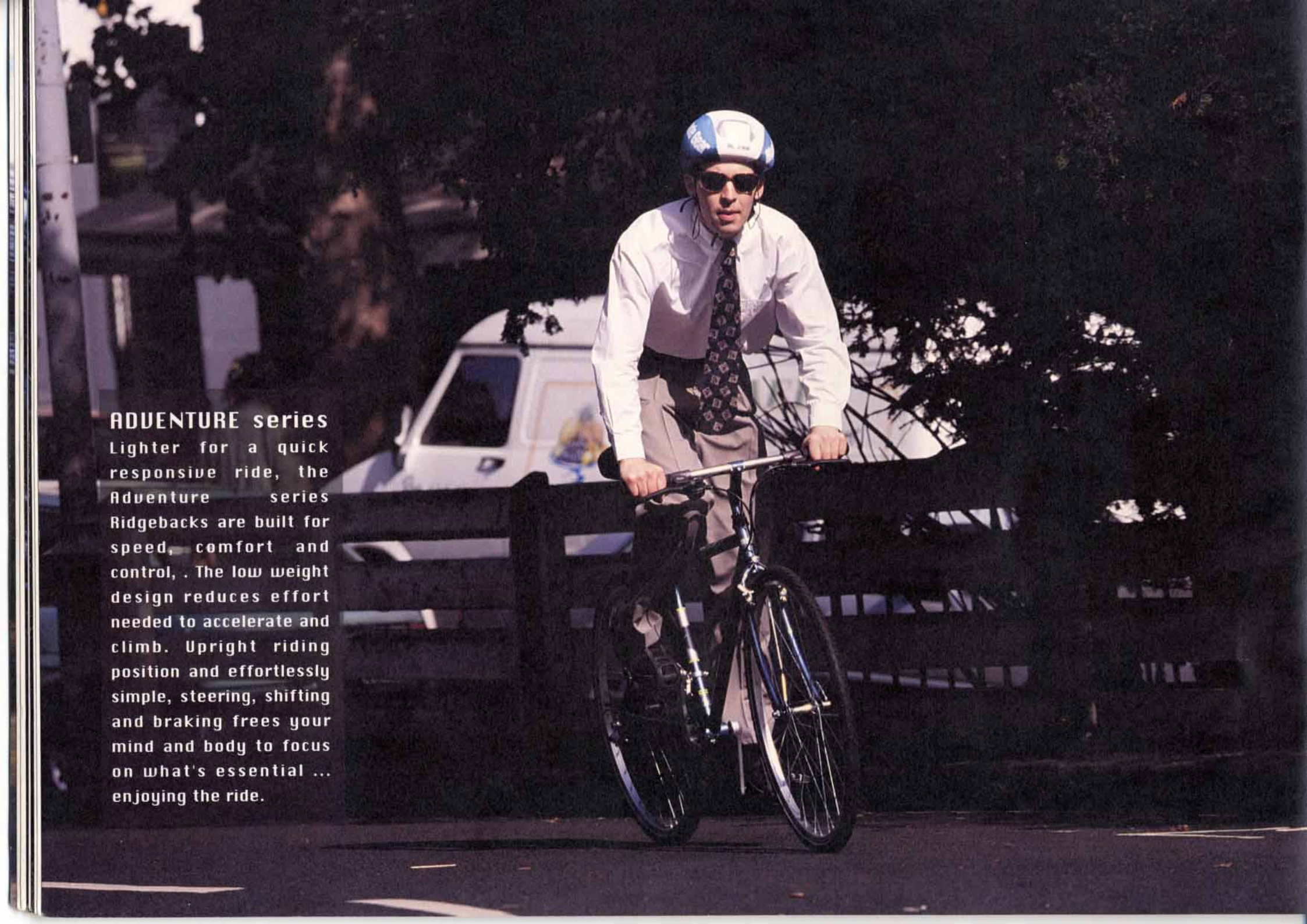
Serious mountain biking action. Every inch a Ridgeback - all the right stuff in all the right places. Lightweight frame, Dual SIS Shimano gears and latest 'M' System brakes. Fast, cool ... essential.



401GS w/24" wheels
to fit inside leg 24- - 30"



Frame - Lightweight Hi Ten Oversize w/outer butted seatube, lifetime warranty. Transmission - Shimano TY21 Dual SIS with 28/38/48 chainrings & 6-speed Hyperglide freewheel. Wheels - Alloy rims with 'Smoke' 26x2.0" tyres. Brakes - Shimano 'M' system. Sizes - 15.5, 17.5, 19, 20.5 inches + 14.5 w/24" wheels. Colour - Black pearl. Price - £199.95 w/RST-200 £299.90 (Not 24" wheels)

A man wearing a white dress shirt, a patterned tie, and a blue and white helmet is riding a black bicycle. He is wearing sunglasses and looking towards the camera. The background is a blurred outdoor setting with trees and a white van. The lighting is bright, suggesting a sunny day.

ADVENTURE series

Lighter for a quick responsive ride, the Adventure series Ridgebacks are built for speed, comfort and control. The low weight design reduces effort needed to accelerate and climb. Upright riding position and effortlessly simple, steering, shifting and braking frees your mind and body to focus on what's essential ... enjoying the ride.



adventure

A superb combination of performance, handling and comfort. The 503 is built around a lightweight double butted Cro-Mo frame fitted with Shimano Altus componentry. Shimano Rapidfire+ provides faultless shifting and with a Gelite saddle and Ritchey grips, comfort is guaranteed.



Frame - Tange special-light (0.9-0.6-0.9) double butted Cro-Mo, lifetime warranty. Groupset - Shimano Altus A20 with Dual SIS Rapidfire+ shifters & 'M' system brakes.

Wheels - Shimano w/Araya PH-35 rims, 700x38c Trail tyres.

Features - Reflective sidewall tyres, Blackburn Lowrider bosses (not shown) & double eyes on fork. Sizes - 15.5, 17, 19, 21 inches. Colour - Aqua pearl. Price - £329.95

adventure



Quick, responsive and comfortable - mountain bike durability and road bike speed. The 502 features Shimano Rapidfire+ levers for "one touch" shifting - across all 21 gears. Street or trail, bike riding has never been easier, or such fun!



Frame - Tange light Cro-Mo, lifetime warranty. Transmission - Shimano Altus C10 with A20 Dual SIS Rapidfire+ shifters, 28/38/48 chainrings, light alloy cranks & 7-speed Hyperglide cassette.

Wheels - Shimano Altus w/Araya PH-35 alloy rims, 700x38c Trail tyres. Brakes - Shimano 'M' system.

Features - Blackburn Lowrider bosses (not shown), double eyes on fork. Sizes - 15.5, 17, 19, 21 inches. Colour - Black pearl. Price - £289.95

adventure



With a comfortable "heads up" riding position and a soft Gelite saddle you stay relaxed and in control, on the road or on the trail. Responsive Cro Mo frame and easy shift Shimano gears complete this lightweight package.



Frame - Tange Light Cro-Mo, lifetime warranty. Transmission - Shimano Altus Dual SIS Rapidfire shifting with SG-R chainrings & Hyperglide freewheel. Brakes - Shimano 'M' system.

Wheels - Alloy Q/R front w/Araya PH-35 alloy rims, 700x38c trail tyres. Features - Blackburn Lowrider bosses (not shown), double mudguard eyes on fork.

Sizes - 15.5, 17, 19, 21 inches. Colour - Cobalt Silver pearl. Price - £239.95



RST-400

Damping - Elastomer/polymer fully adjustable, 1.6" travel.

Steerer - 4130 butted Cro Mo.

Crown: Forged aluminium. Sliders - 4130 butted Cro Mo.

Blades - one piece forged 6061-T6 aluminium alloy.

Brake Arch - Rigid die cast aluminium. Colour - Silver. Price - **£149.95**

RST-200

Damping - Spring adjustable, 1.6" travel.

Steerer/Crown/Sliders - 4130 butted Cro Mo.

Blades - one piece forged 6061-T6 aluminium alloy.

Brake Arch - Rigid die cast aluminium. Colour - Black. Price - **£99.95**

FEATURES	705RS/XTR	705RS/LX	704RS	604LT	603GS
FRAME	Tange Light d/b Cro Mo w/Ritchey Logic dropouts, snake cable guide, outer butted seat tube	Tange Light d/b Cro Mo w/Ritchey Logic dropouts, snake cable guide, outer butted seat tube	Tange Light d/b Cro Mo w/Ritchey Logic dropouts, snake cable guide, outer butted seat tube	Tange Light d/b Cro Mo w/forged vertical dropouts, snake cable guide, outer butted seat tube	Tange Light d/b Cro Mo w/forged vertical dropouts, snake cable guide, outer butted seat tube
FITTINGS	2 sets bottle mounts	2 sets bottle mounts	2 sets bottle mounts	Double eyes, carrier bosses, 2 sets water bottle mounts	Double eyes, carrier bosses, 2 sets water bottle mounts
FORK	Lightweight Cro Mo oval section blades w/cast dropouts	Lightweight Cro Mo oval section blades w/cast dropouts	Lightweight Cro Mo oval section blades w/cast dropouts	Lightweight Cro Mo oval section blades	Lightweight Cro Mo oval section blades
FITTINGS	n/a	n/a	n/a	Mudguard eyes	Mudguard eyes
HEADSET	Ritchey Logic Expert packed w/Finish Line Teflon Grease	Ritchey Logic Expert packed w/Finish Line Teflon Grease	Ritchey Logic packed w/Finish Line Teflon Grease	Ritchey Logic packed w/Finish Line Teflon Grease	Steel water sealed packed w/Finish Line Teflon Grease
HANDLEBAR	Brahma Steerhorn 560mm	Brahma Steerhorn 560mm	Brahma Steerhorn 560mm	Comp-Lite Alloy 170g	Comp-Lite Alloy 170g
STEM	Comp-Lite Cro Mo	Comp-Lite Cro Mo	Comp-Lite Cro Mo	Comp-Lite Cro Mo	Comp-Lite Cro Mo
GRIPS/TAPE	Brahma Grip	Brahma Grip	Brahma Grip	Ritchey True Grip	Ritchey True Grip
CHAINWHEEL	Shimano XTR 26/36/46 Round 175mm Dual SIS	Shimano Deore LX 26/36/46 Round 175mm Dual SIS	Shimano Exage ES 26/36/46 Round 175mm Dual SIS	Shimano Exage LT 26/36/46 Round 175mm Dual SIS	Shimano A20 28/38/48 Round 170mm Dual SIS
BB SET	Shimano Sealed Cartridge	Shimano Sealed Cartridge	Shimano Sealed Cartridge	Shimano Sealed Cartridge	Shimano Sealed Cartridge
CABLE GUIDE	Shimano SP-25	Shimano SP-25	Shimano SP-25	Shimano SP-25	Shimano SP-25
REAR DERAILLEUR	Shimano XTR	Shimano Deore LX	Shimano Exage ES	Shimano Exage LT	Shimano A20
FRONT DERAILLEUR	Shimano XTR	Shimano Deore LX	Shimano Exage ES	Shimano Exage LT	Shimano A20
SHIFTERS	Shimano XTR Rapidfire+	Shimano Deore LX Rapidfire+	Shimano Exage ES Rapidfire+	Shimano Exage LT Rapidfire+	Shimano A20 Rapidfire+
CHAIN	Shimano 7401	Shimano HG70	Shimano HG50	Shimano HG50	Shimano HG50
FREEWHEEL	Shimano M900 12/32 8sp	Shimano HG70 12/28 7sp	Shimano HG50 13/30 7sp	Shimano HG50 13/30 7sp	Shimano HG50 13/30 7sp
PEDALS	Shimano Deore XT	Low pro w/Cro Mo axle	Low pro w/Cro Mo axle	Nylon MTB w/Cro Mo axle	Nylon MTB w/Cro Mo axle
TOE CLIPS/STRAPS	Shimano clips/straps	Nylon MTB clips/straps	Nylon MTB clips/straps	Nylon MTB clips/straps	Nylon MTB clips/straps
BRAKES	Shimano XTR	Shimano Deore LX 'M' system	Shimano Exage ES 'M' system	Shimano Exage LT 'M' system	Shimano A20 'M' system
BRAKE LEVERS	Shimano XTR	Shimano Deore LX	Shimano Exage ES	Shimano Exage LT	Shimano A20
HUBS	Shimano XTR	Shimano Deore LX	Shimano Exage Q/R	Shimano Exage Q/R	Shimano Altus Q/R
RIMS	Araya RM-17 32h	Araya RM-17 32h	Araya CV-7 concave 32h	Araya VP-20 36h	Araya VP-20 36h
SPOKES	d/b stainless steel	d/b stainless steel	d/b stainless steel	Rustless 14G	Rustless 14G
TYRES	Ritchey Z Max 26x2.1"	Ritchey Z Max 26x2.1"	Ritchey Z Max 26x2.1"	Ritchey Megabite 26x2.1"	Ritchey Mod Quad 26x2.0"
SADDLE	Racelite leather w/Cro Mo rail	Racelite leather w/Cro Mo rail	Racelite leather	Ridgeback Racelite	Ridgeback Racelite
SEAT POST	Kalloy hard anodized 29.2mm	Kalloy hard anodized 29.2mm	Kalloy hard anodized 29.2mm	Alloy Micro 29.2mm	Alloy Micro 26.0mm
SEAT BOLT	Kalloy Lite	Kalloy Lite	Kalloy Lite	Kalloy Lite	Kalloy Lite
EXTRAS	Touch up paint	Touch up paint	Touch up paint	Touch up paint	Touch up paint
COLOUR	Emerald Mirror	Emerald Mirror	Zircon Mirror	Titanium Pearl	Aqua Pearl
SIZES	15.5" 17.5" 19"	15.5" 17.5" 19"	15.5" 17.5" 19"	15.5" 17.5" 19" 20.5"	15.5" 17.5" 19" 20.5"
RRP	£999.95	£549.95	£469.95	£379.95	£339.95
with RST-400	£1149.90	£699.90	£619.90	£529.90	£489.90
with RST-200	N/A	N/A	N/A	N/A	N/A