

PACE
running
APPAREL



S o f t w a r e P o r t f o l i o

£1.00

PACE RACING APPAREL

is an extensive range of cycle clothing, with its design roots firmly bedded in PACE RACING CYCLES - manufacturers of some of the best cycle componentry in the world.

Our design brief was simple, design and manufacture a range of the very best cycle wear. Make it simple, functional and make it the best - it should never compromise.

Once we'd followed those principles the results spoke for themselves - an essential, minimalist, classic look that will never be subject to the whims of fashion.

Each item of the range has been looked at individually and purpose designed from the ground up. New fabrics sourced from athletics and outdoor clothing backgrounds have been introduced and the fit, cut and technology of each garment engineered with a fresh eye.

The range will develop continuously, always introducing new ideas and fabrics, remaining constantly at the cutting edge of design development.

If you demand the very best from your hardware, if you're serious about your cycling, if you race to win... Demand the best from your software.

TEXTILE ENGINEERING



Pace Racing Ron Hill Mountain Bike Team

FABRICS FOR CONSTRUCTION

Chosen simply as the best product to do the job. We use, amongst others, the following fabrics:

ITALIAN LYCRA®

Most shorts fabrics contain up to 8% or 14% Lycra® - ours is a 20% mix. It is softer, fits better and lasts longer.

“COOLMAX” POLYESTER

A technical fabric from Dupont. The fabric pulls perspiration quickly away from your body, leaving you dry and comfortable next to the skin.

ULTRAFLEECE™

Developed by world leaders “Mountain Equipment”. This is an ultra light, wind resistant fleece that shrugs off showers, by far the most suitable fleece for serious cyclists.

RC-4000 RIPSTOP

A totally waterproof breathable fabric, which keeps off the weather and leaves you comfortable inside. RC-4000 is lighter but less resistant to abrasion and less breathable than Gore-Tex®. It is however totally waterproof and offers excellent value for money.

RSCTX GORE-TEX®

The world beating laminate from W.L. Gore, made up with a tough lightweight Ripstop face fabric. The very best waterproof breathable fabric in the world - for total performance.



ALL RIGHTS RESERVED TO KEEP YOU DRY
© 1998 W.L. GORE & ASSOCIATES, INC.

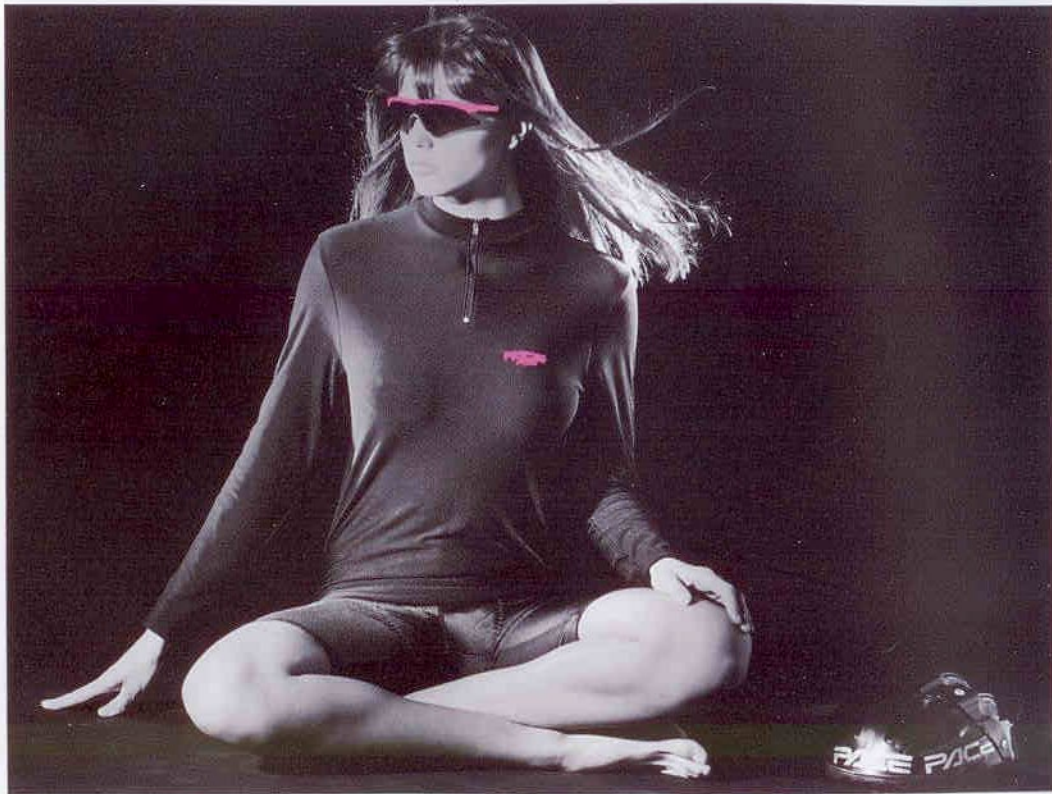


garment type	measure	s	m	l	xl
MENS BASE LAYERS	CHEST	30/32	34/36	38/40	42/44
MENS SHORTS & TIGHTS	WAIST	24/26	28/30	32/34	36/38
LADIES TOP	BUST	31/32	34/36	38/40	
LADIES SHORTS	WAIST	22/24	26/28	30/32	
FLEECE/ WATERPROOFS/ SHELLS (UNISEX)	CHEST	34/36	38/40	40/42	42/44





PACE
Racing
APPAREL



**RC-1060
STAGE TWO SHIRT**

- Made from Coolmax Polyester performance fabric
- 3 rear pockets
- Anatomic fit and cut for riding position
- Size: S M L XL
- Colourways: Black/Cinnamon/Cobalt Cobalt/Black/Jade



**RC-1050
STANDARD SHIRT**

- Polyamide cycle jersey fabric
- 3 rear pockets
- Anatomic fit and cut for riding position
- Size: S M L XL
- Colourways: Coral/Grey/Cobalt Jade/Black/Cobalt



**RC-2040
STAGE TWO LONG SLEEVE**

- Winter weight Lycra® riding top
- 3 rear pockets
- Reflective tape for night visibility
- Size: S M L XL
- Colourways: Black

ACCESSORIES

**TSHIRTS
SWEATSHIRTS
LONG SLEEVE
TURTLE NECKS**

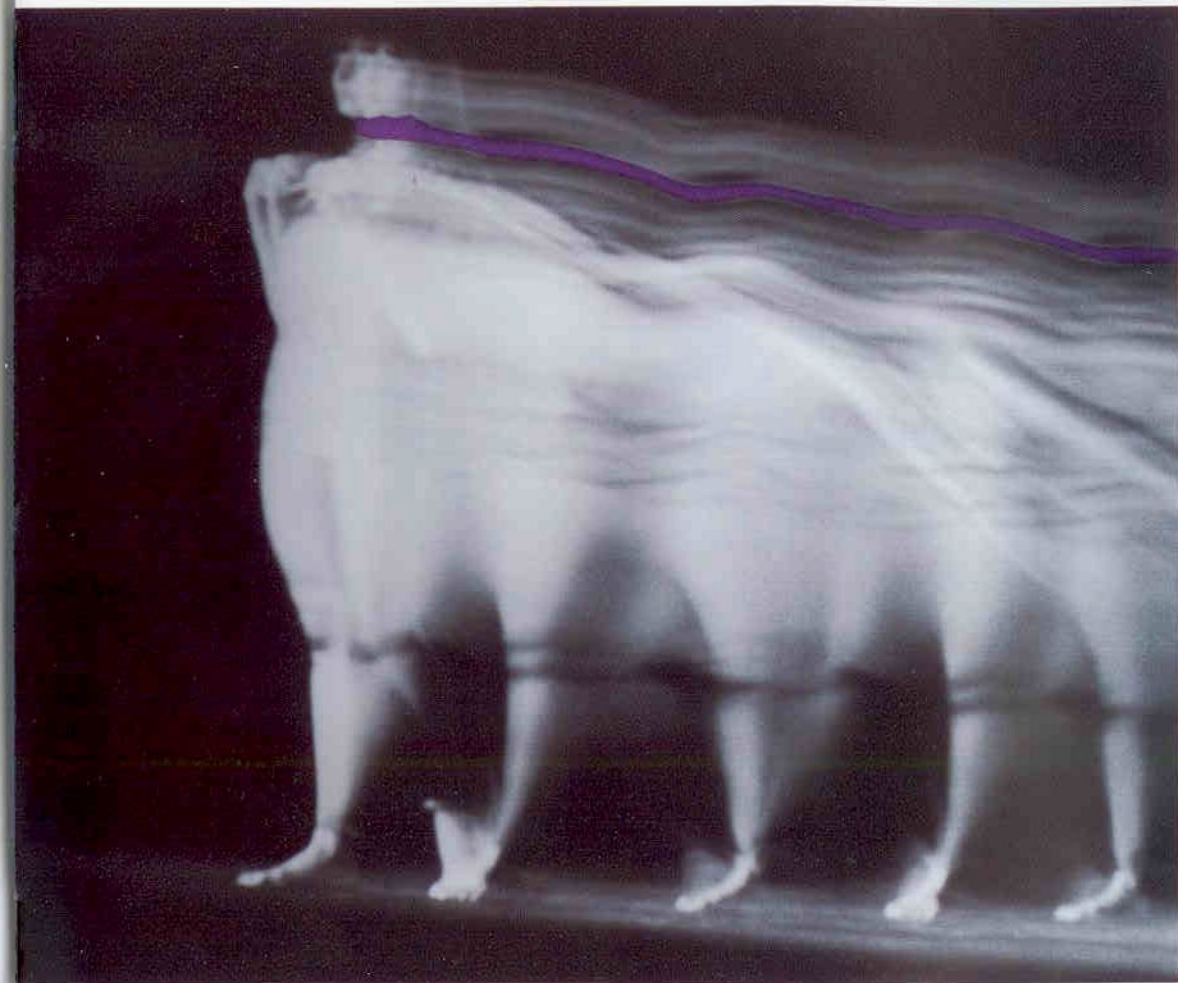
- All made from heavyweight American cottons
- Bright graphics, printed and embroidered
- Make a statement off the bike
- Size: L XL
- Colourways: Assorted







PACE
running
APPAREL



**RC-1010
STANDARD SHORT**

- Six panel flat lock construction
- Eschler anti-bac Swiss insert
- Quality American leg grippers
- Size: S M L XL
- Colourways:
Black/Jade/Cobalt
Grey/Coral/Cobalt



**RC-1020
STAGE TWO SHORT**

- Eight panel flat lock, Coolmax Lycra®
- Eschler seamless anti-bac Swiss insert
- Quality American leg grippers
- Size: S M L XL
- Colourways:
Black/Jade/Cobalt
Black/Cinnamon/Cobalt



**RC-1040
DOUBLE SHORT**

- Six panel construction with double toughened Lycra® over crash areas
- Eschler anti-bac Swiss insert
- Quality American leg grippers
- Size: S M L XL
- Colourways: Black



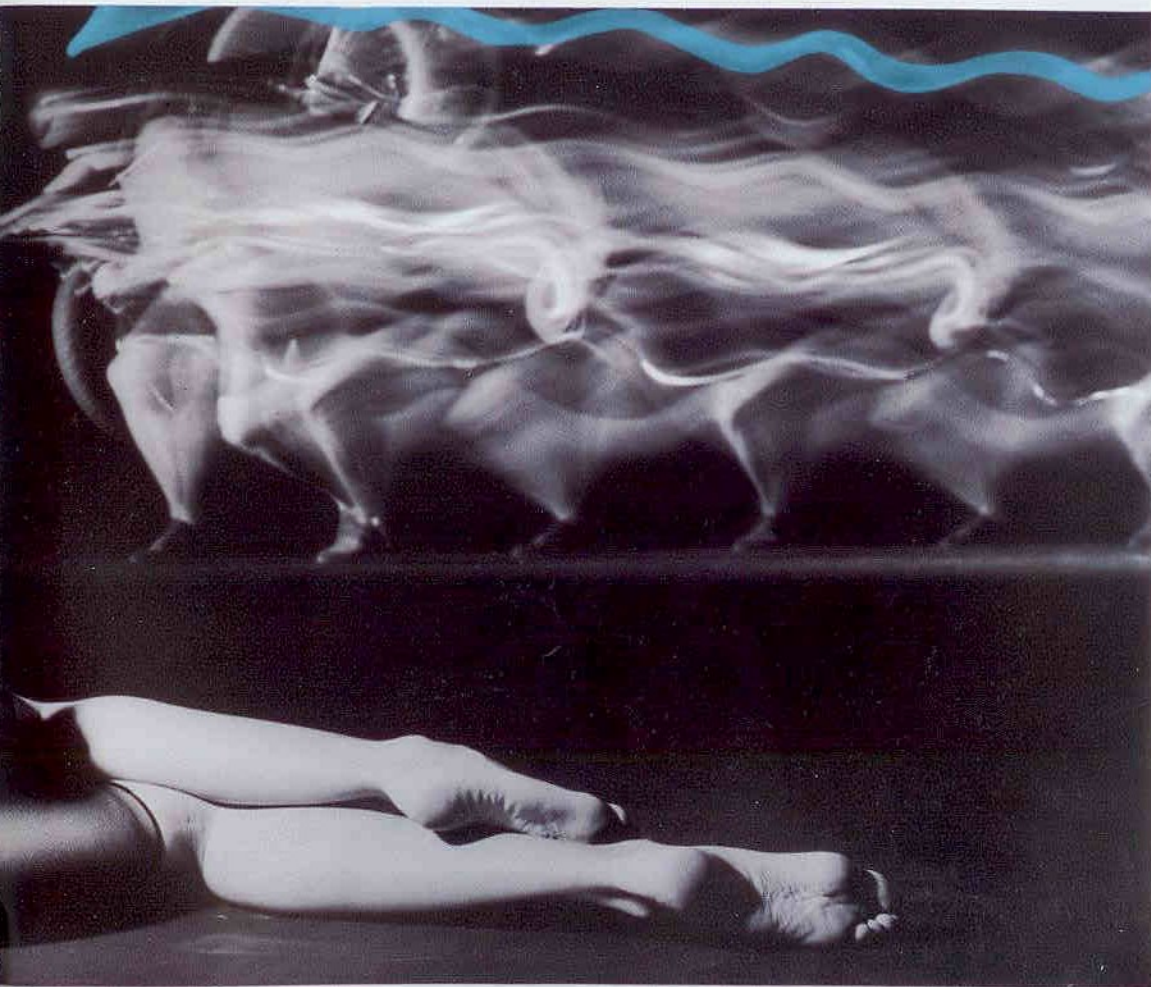
**RC-2010
SUMMER TIGHTS**

- Flat lock summer training tights in Lycra®
- High cut back and stirrup
- Size: S M L XL
- Colourways: Amethyst/Black
Black/Jade

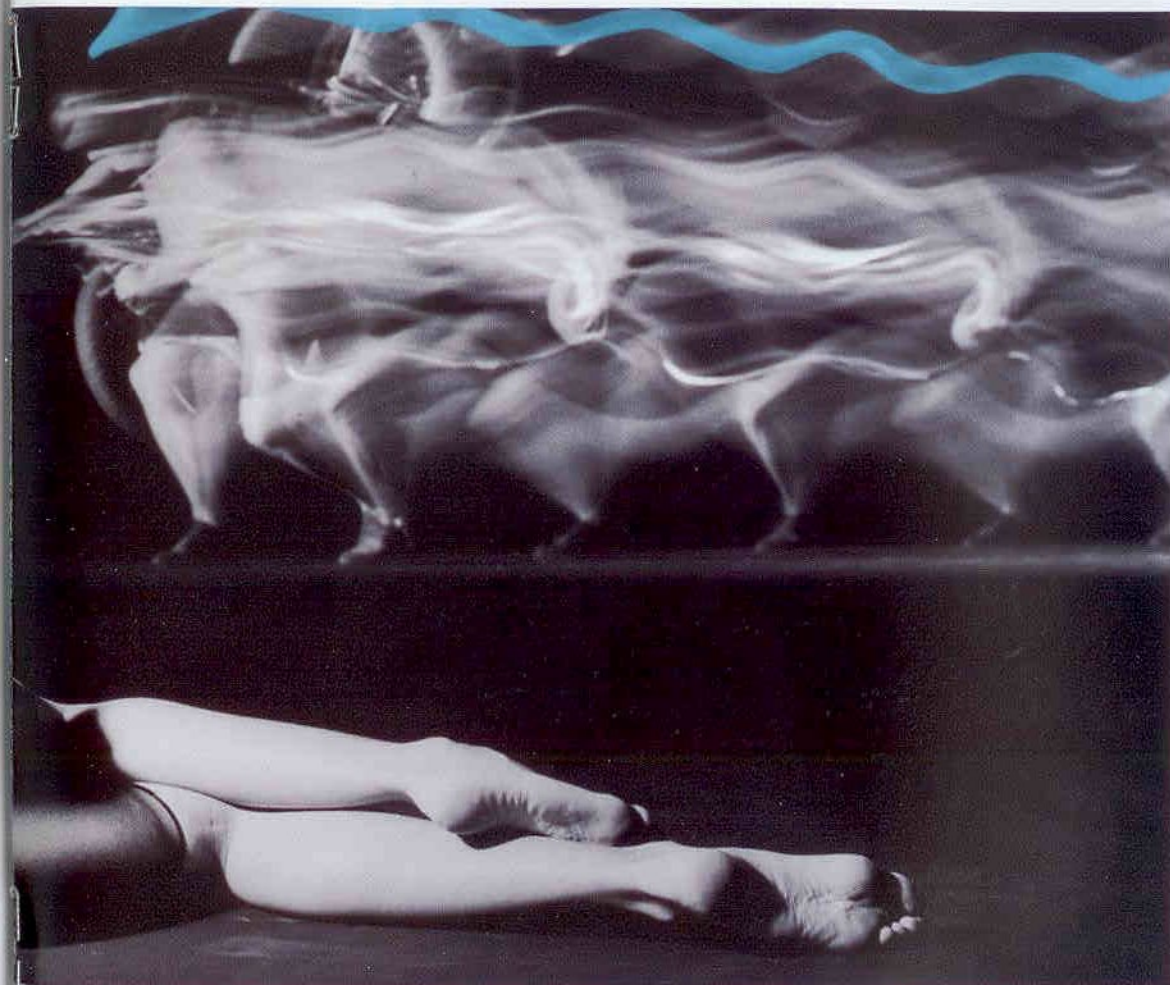
**RC-2020
WINTER TIGHTS**

- Warm winter weight Lycra®, perfect for cool weather riding
- High cut anatomic back
- Lower leg zips for ventilation with leg grippers
- Size: S M L XL
- Colourways: Black





PACE
Racing
APPAREL



RC-1030

LADIES SHORT

- Six panel flat lock, ladies fit
- Eschler anti-bac ladies cut insert
- Quality American leg grippers
- Size: S M L XL
- Colourways:
Black/Coral/Amethyst
Grey/Jade/Cobalt

RC-1070

LADIES TOP

- Sports top to match shorts
- Ideal for summer and active use
- Size: S M L XL
- Colourways: Black/Coral
Cobalt/Jade







PACE
Racing
APPAREL



**RC-3010
RIPSTOP PERTEX®
PULL-ON**

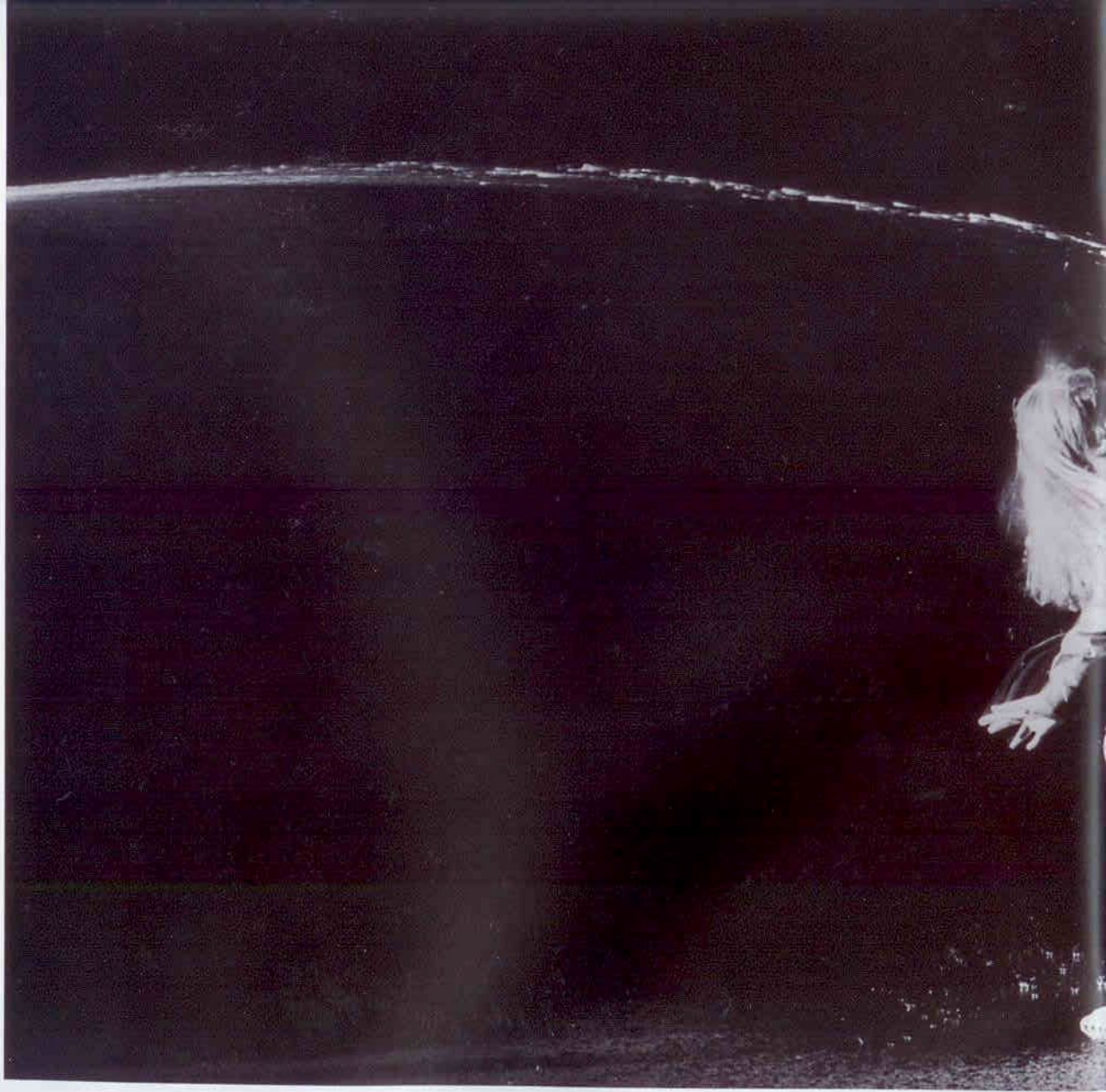
- Windproof shell, keeps off light showers
- Packs down into rear pocket
- High protection for minimum weight
- Reflective strips for visibility
- Sizes: S M L XL
- Colourways: Ink/Purple (not shown)

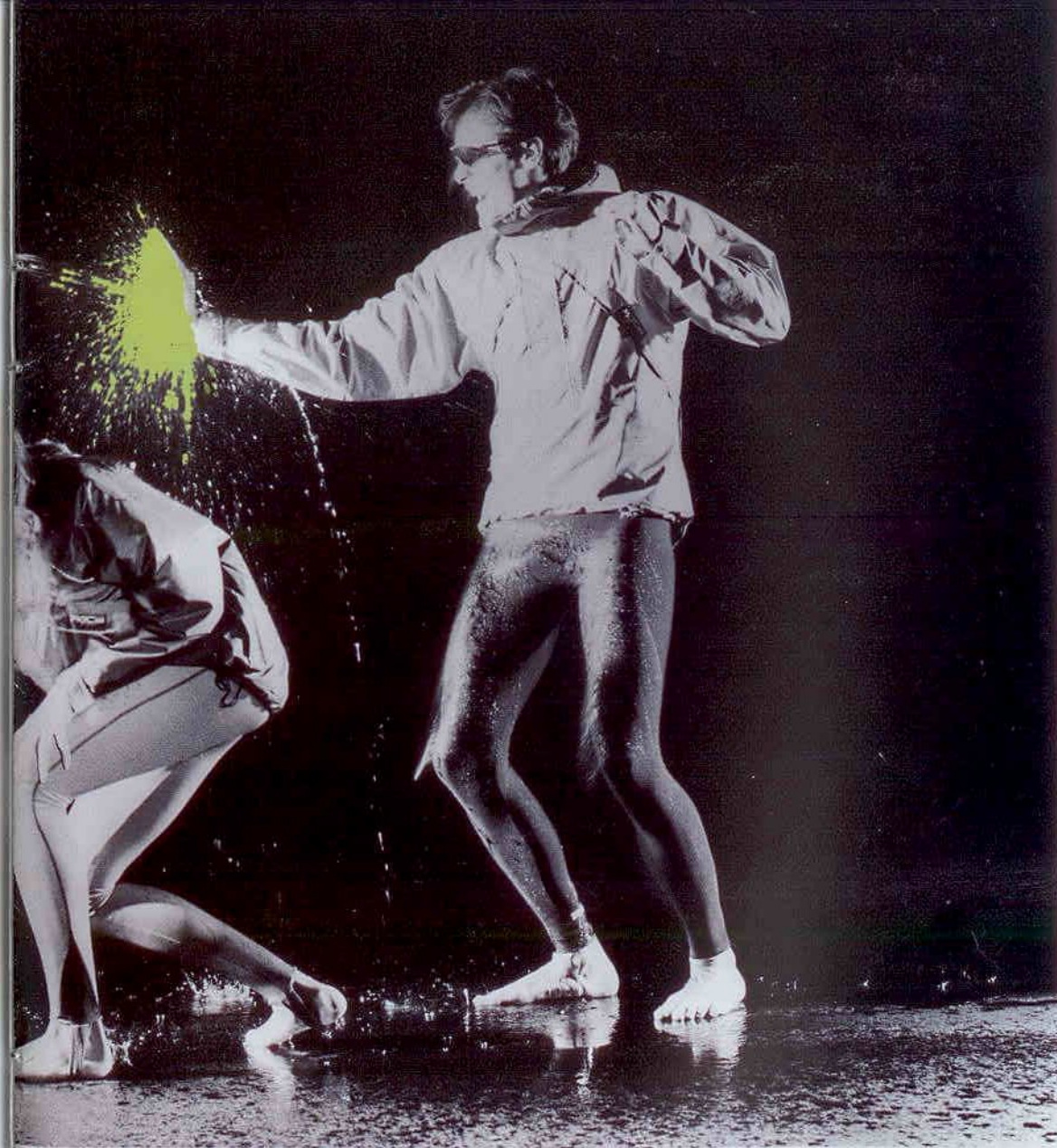


**RC-2050
ULTRAFLEECE™ PULL-ON**

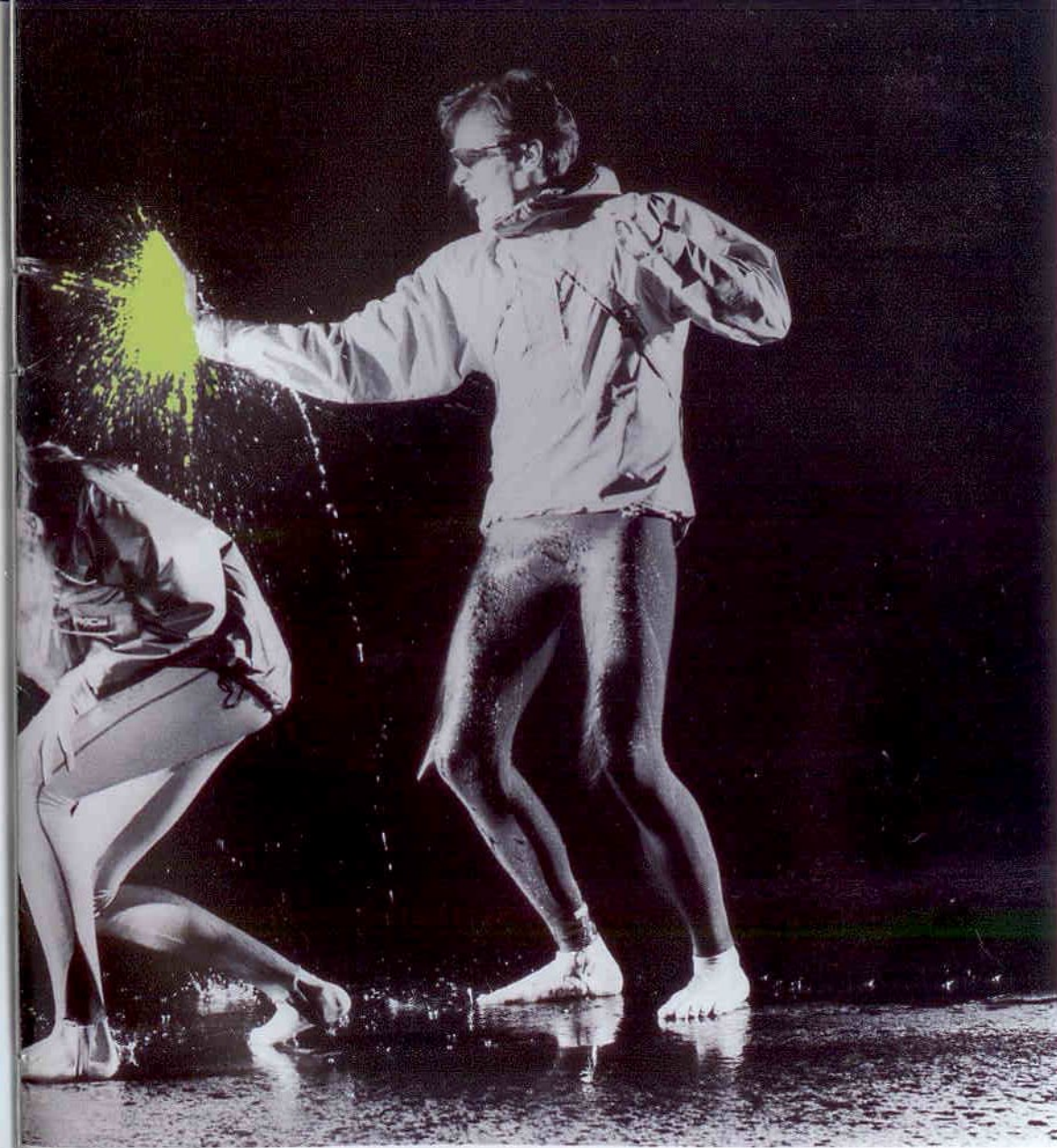
- Ultrafleece™ wind resistant, water resistant, tough technical fabric
- 3 rear pockets - central one zipped
- Deep front zip for ventilation
- Hand warmer pockets and zipped map pocket
- Reflective piping for night riding
- Size: S M L XL
- Colourways: Blue/Cerise
Black/Jade
Grey/Petrol
Petrol/Cerise







PACE
Running
APPAREL



**RC-5010 & 5020
GORE-TEX® JACKET &
PULL-ON**

- Ultra lightweight, tough
Gore-tex® world leading
performance fabric
- Roll away hood with
excellent visibility
- Reflective strips for night
riding
- Anatomic cut for riding
position, with high pockets
to clear legs when riding
- Size: S M L XL
- Colourways: Navy/Purple(J)
Purple/Navy(PO)



**RC-4010 & 4020
RIPSTOP JACKET &
PULL-ON**

- RC-4000 waterproof
breathable fabric
- Roll away hood with
excellent visibility
- Reflective strips for night
riding
- Anatomic cut for riding
position, with high pockets
to clear legs when riding
- Size: S M L XL
- Colourways: Titanium/Plum(J)
Plum/Silver(PO)



PACE 1993 STATUS ONE DEALERS

AIRE VALLEY CYCLES

West Yorkshire
0535 610839

ALF JONES CYCLES

N. Wales
0978 26180

A & M CYCLES

West Midlands
0827 54767

ARNOFTS CYCLE DEPT

S. Ireland
010 353 1 721111

BIKE SCENE

Cleveland
0287 610735

BUTLER CYCLES

S.W. Sussex
0705 732936

CASTLE CYCLES

Notts
0636 79893

CYCLE CARE

Bucks
0494 447908

THE CYCLE SHOP

N. Ireland
0846 662066

CYCLES WILLIAMSON

S. Scotland
031 225 3286

CYCLONE

Derbyshire
0773 821428

CYCLOPATH

E. Lancs
061 633 2773

DAVE MELLOR CYCLES

Shropshire
0743 366662

ERIC BURGESS CYCLES

N. Lancs
0282 78487

FAT TRACKS

Berks
0628 788881

FREETOWN SPORTS

Humbeside
0482 589066

HARDISTY CYCLES

N.E. Tyne & Wear
091 265 8619

HARRY HALL CYCLES

Central Manchester
061 832 1369

HORSWILLS CYCLES

Dorset
0202 512761

JOHN ATKINS CYCLES

Warwickshire
0936 430211
0203 222997

KESWICK MTB CENTRE

Cumbria
07687 73717

LEISURE LAKES

W. Lancashire
0772 814990

LEISURE LAKES

N.E. Lancashire
061 797 5625

MOTOSPORT

Surrey
0483 278282

NEIL ROSS CYCLES

N. Scotland
0224 626360

NEIL WALTON CYCLES

S. Manchester
061 446 2084

ON YOUR BIKE LTD

London Bridge
071 378 6669

ON YOUR BIKE LTD

Victoria, London
071 630 6669
Regent Street
071 930 3181
Covent Garden
071 836 8541

STIF

Yorks
0532 789606

STODDY'S BIKE SHOP

Essex
0621 853188

THE BIKE PEDLAR

Leicester
0533 769369

PACE OUTDOOR SPECIALISTS (Clothing Only)

COISWOLD CAMPING

Manchester (061) 236 4123
Betws-y-Coed (0690) 710234
South Cerney (0285) 860612
Shepherds Bush (081) 743 2976
Reading (0734) 268881
Mail Order (0285) 860012

FIELD & TREK

Brentwood (0277) 22230
Mail Order (0277) 233122
Canterbury (0227) 470023
Slough (0753) 554252
Gloucester (0452) 416549

TAUNTON LEISURE

Taunton (0823) 331875
Exeter (0392) 410534
Bristol (0272) 637640
Swansea (0792) 476515

NEW HEIGHTS

Stirling (0397) 704921

SPORTAK

Burnley (0282) 36816

TREKITT

Hereford (0432) 263335

YORK CYCLEWORKS

York (0904) 626664

NO SWEAT

Barnstable (0271) 326232

OUTDOOR PURSUITS

Lancaster (0524) 843663

OUTDOOR SHOP

Stoney Stratford (0908) 568913

CYLLSIDE CYCLES

Ambleside (05394) 33592

ROGER TURNER

Nottingham (0602) 417230
Leicester (0533) 551952

MARSHALLS

Aberdeen (0224) 636952

WILDERNESS WAYS

Newcastle (091) 232 4941
Middlesborough (0642) 248916
Leeds (0532) 444715

GREAT OUTDOORS

Chesterfield (0246) 220287

FREESPIRIT

Meadow Hall,
Sheffield (0742) 569544

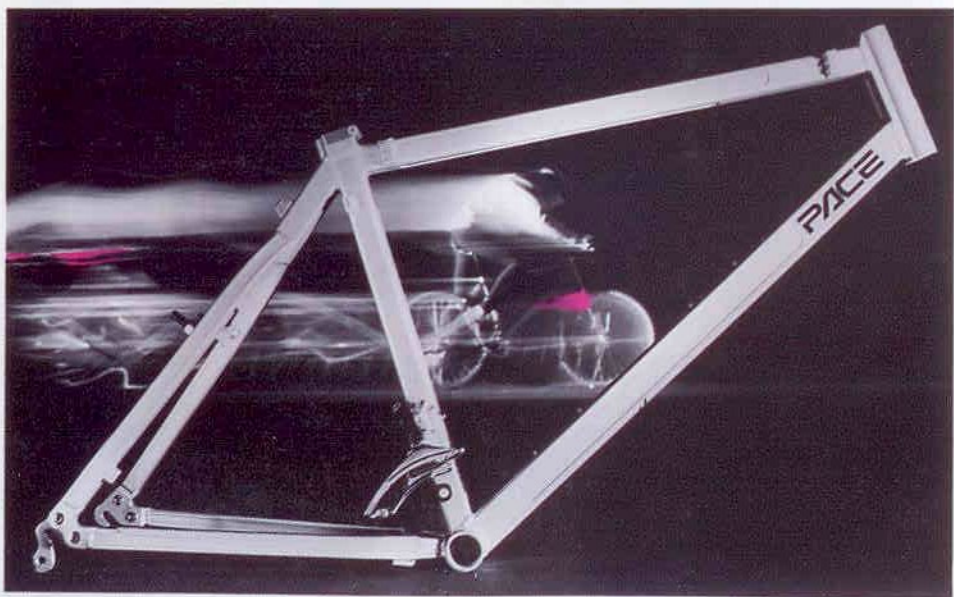
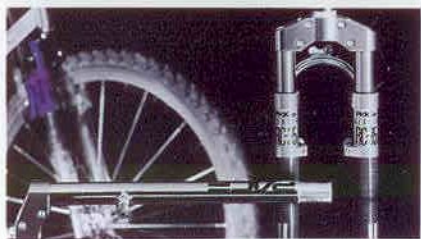
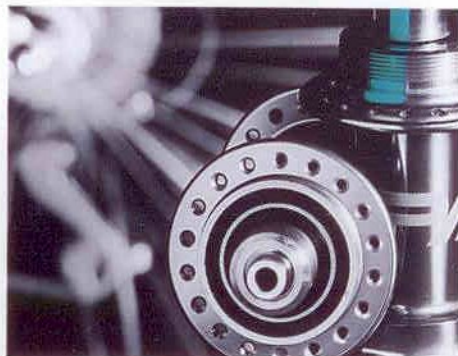
OUTSIDE

Hathersage (0433) 651936
Llanberis (0286) 871534

SNOW & ROCK

Kensington (071) 937 0873
Birmingham (021) 236 8280

PACE
Performance



H a r d w a r e P o r t f o l i o

Cover photograph: John Beatty, evening over Kinder Downfall, Peak District, Derbyshire, UK.



Pace Racing Apparel

Peaco House, Dawson Street, Hyde, Cheshire, UK, SK14 1RD

Tel. 061 366 5020 Fax. 061 366 9732

PACE
Racing
A P P A R E L

PACE RACING APPAREL is a Peaco Group brand

PACE RACING is a registered Trade Name of PACE CYCLES Ltd. 104-106 Main Street Wilsden, West Yorkshire BD15 0AB.

Gore-Tex is the Registered Trademark of W.L. Gore & Associates Inc.

Coolmax is a Dupont certified fabric.

Lyera is the registered Trademark of Dupont.

Pertex is the registered Trademark of Perseverance Mills.