

KHS

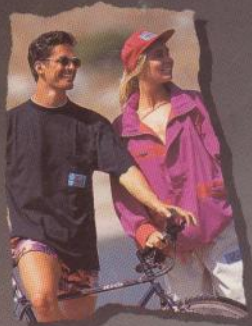


KHS, THE ULTIMATE BIKE

KHS ACCESSORIES

KHS TEAMWEAR

KHS, THE ULTIMATE GEAR



KHS, THE ULTIMATE BIKE

The KHS Headoffice is located in Carson - California in the United States of America, the home-country of the first Mountain Bike. From the American drawing-board we design over the last fifteen years high quality bicycles.

Our production facility is based in Taoyuan - Taiwan, where we produce and assemble the KHS bikes on an ultimate quality level. Therefore we offer a warranty on frame and frontfork for ten years and ofcourse on all other components a one year warranty after the purchase date.

KHS bicycles are built with the most technically sophisticated tube-materials on the market. Our frame designs take advantage of this tubing's excellent resiliency and lightness by putting the rider in an optimum position for racing, cruising, commuting and pure

"hammerin" fun.

Each geometry is created for our bicycles' specific purpose, whether it is a hybrid, recreational or high performance bike.

Our sizes are measured from the center of the bottom bracket to the top of the top tube. Besides the KHS own "Liteconcept" frame tubing, KHS is using mainly "True Temper" frame tubing from USA.

In the Roadrace and Trekking segments we are using the "True Temper AVR" chromoly double butted frame tubes.

In the Mountain Bike segment we are using in the top range "True Temper OX II" heat treated chromoly double butted frame tubes with shortened butted sections, that reduce weight and still offer incredible strenght.

Together with other really lightweight components we achieve a total bicycle-weight with the KHS Montana Team of 10,4 kg.

That is, what we call "THE ULTIMATE BIKE".

Veska Turkia, KHS Mountain Bike team - Finland



KHS, THE ULTIMATE BIKE



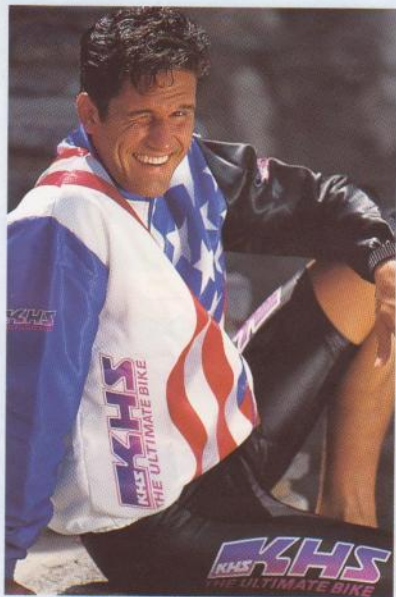
KHS Headoffice in Carson - California.

KHS, THE ULTIMATE GEAR

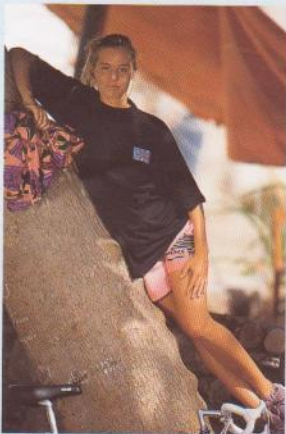
For an Ultimate Bike you need Ultimate Riding Gear. We have maintained a commitment for the KHS TEAMWEAR to high quality, performance and innovations.

We demand that the best be put into our clothing so you can get the best out of them. Have a look at the various garments and you will agree that for the KHS Ultimate Bike you can only decide for the KHS Ultimate Gear.

KHS The Ultimate American Gear and Ocean Pacific, an outstanding American sportsbrand, is the ideal combination for the cyclist of today. All products are different from other brands by design and styling, ultimate quality and light weight materials.



Whether you keep to the streets for casual, fun and fitness or want to relax, you always find the ultimate garment in the KHS Casualwear Collection.



*THE KHS CASUALWEAR COLLECTION has been designed by Ocean Pacific.

KHS MONTANA TEAM NA50

FRAME	True Temper OX II tubes-outer butted seat tube CR/MO stays-forged drop outs	BB PARTS	Shimano BB-UN91 LP
FRONTFORK	Spinner superlite CR/MO 730 gr.-forged drop outs w/o eyelets	CHAINWHEEL/CRANK	Shimano FC-M900A 46X36X26T
HEADPARTS	Tioga Master DL	FREEWHEEL	Shimano CS-M900 12-28T 8S
RIMS	(F) Weinmann Bontrager BCX 1 32h (R) Weinmann Bontrager BCX 2 32h	PEDALS	Shimano PD-M737 clipless
SPOKES	Wheelsmith DB	SEATPOST	Kalloy SP-264 300L
TYRES	(F) Panaracer smoke lite comp 26X1.9 black skin (R) Panaracer smoke lite comp 26X1.9 black skin	SADDLE	Bontrager VL-192T titanium frame
HUBS	(F) Shimano HB-M900 (R) Shimano FH-M900	HANDLEBAR	Zoom 130 gr. black
GROUPSET	Shimano FD-M901 top pull / RD-M900 GS	HB STEM	Zoom Competition titanium
SHIFTER(S)	Shimano ST-M900 Rapidfire +	BRAKES	Shimano BR-M900 Cantilever
		BRAKELEVERS	See shifters
		EXTRA'S	Touch up paint / Owners manual
		SIZES	G-15/17/19/21"
		COLOUR	Team colour blue/pink



SHIMANO
XTR

The KHS Montana Team is lighter, stronger and faster than ever. We offer you a competitive race equipment, ready to use for maximum performance, because "Winners" ride the Team.

What do you want more? This bike is really an Ultimate Bike.



MONTANA TEAM NA50 10.4 KG

KHS MONTANA PRO NA 40

FRAME	True Temper OX II tubes -outer butted seat tube CR/MO stays-forged drop outs	BB PARTS	Shimano BB-UN71
FRONTFORK	Spinner superlite CR/MO 730 gr.-forged drop outs w/o eyelets	CHAINWHEEL/ CRANK	Shimano FC-M730A 46X36X26T
HEADPARTS	Tioga master DL	FREEWHEEL	Shimano CS-HG70 13-30T 7S
RIMS	(F) Weinmann Bontrager BCX1 32h	PEDALS	VP 105A with toeclips
	(R) Weinmann Bontrager BCX2 32h	SEATPOST	Kalloy SP-264 300L
SPOKES	DB 14-15-14	SADDLE	Bontrager VL-192T titanium frame
TYRES	(F) Panaracer smoke lite comp 26X1.9 black skin	HANDLEBAR	Zoom 130 gr. black
	(R) Panaracer smoke lite comp 26X1.9 black skin	HB STEM	Zoom competition ti-color
HUBS	(F) Shimano HB-M730	BRAKES	Shimano BR-M734 cantilever
	(R) Shimano FH-M732	BRAKELEVERS	See shifters
GROUPSET	Shimano FD-M736 top pull / RD-M735 SG5	EXTRA'S	Touch up paint / Owners manual
SHIFTER(S)	Shimano ST-M095 Rapidfire +	SIZES	G-15/17/19/21"
		COLOUR	Purple with spots



You are right, this Montana Pro is your bike, equipped with the legendary Shimano Deore XT componentry, True Temper OX II frameset, Bontrager lightweight rims and saddle, delivers an agility and quickness that puts other companies' top-end bikes to the background.



SHIMANO
DEORE XT

MONTANA PRO NA 40 10.8 KG

KHS MONTANA COMP NA30

FRAME	True Temper AVR 3T lig-welded forged drop outs	CHAINWHEEL/ CRANK	Shimano FC-M560 46X36X26T
FRONTFORK	Spinner CR/MO taped - spiral stem	FREEWHEEL	Shimano CS-HG70 12-28T 7S
HEADPARTS	Tioga Expert CR-black	PEDALS	VP 338A with toeclips
RIMS	(F) Weinmann Bontrager BCX3 32h (R) Weinmann Bontrager BCX3 32h	SEATPOST	Kalloy SP-264 300L
SPOKES	SS-14G	SADDLE	Bontrager VL-192 (steel frame)
TYRES	(F) Panaracer smoke dart 26X2.1 black skin (R) Panaracer smoke 26X2.1 black skin	HANDLEBAR	Zoom 170 gr.
HUBS	(F) Shimano HB-M560 (R) Shimano FH-M560	HB STEM	MTS-18800-1 black
GROUPSET	Shimano FD-M651 top pull / RD-M650 SGS	BRAKES	Shimano BR-M560 Cantilever
SHIFTER(S)	Shimano ST-M560 RAPIDFIRE +	BRAKELEVERS	See shifters
BB PARTS	Shimano BB-LP20	EXTRA'S	Touch up paint / Owners manual
		SIZES	G-15/17/19/21"
		COLOUR	Team colour blue/pink Black (Germany only)



SHIMANO
DEORE DX

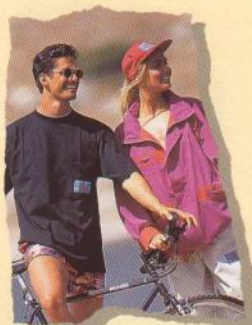
Our product managers creatively combined a special blend of components to maximize strength and minimize weight, while keeping the resulting performance affordable.

The True Temper AVR frame is painted as a look-alike to the KHS Montana Team, so who is recognizing the difference?



KHS MONTANA SUMMIT NA25

FRAME	True Temper AVR 3T tig-welded forged drop outs	CHAINWHEEL/ CRANK	Shimano FC-M320 46X36X26T
FRONTFORK	Spinner CR/MO forged end - spiral stem	FREEWHEEL	Shimano CS-HG50 12-26T 7S
HEADPARTS	Tioga SE II-S sealed black	PEDALS	VP 955S with toeclips
RIMS	(F) Weinmann 2719 26X1.5 polished 36H	SEATPOST	PM-201 300L
	(R) Weinmann 2719 26X1.5 polished 36H	SADDLE	Avocet-racing without clamp
SPOKES	SS-14G	HANDLEBAR	Zoom 170 gr. black
TYRES	(F) Cheng Shin C1027 26X1.95 dark sidewall	HB STEM	MTS-18800-1 black
	(R) Cheng Shin C1027 26X1.95 dark sidewall	BRAKES	Shimano BR-M320 Cantilever
HUBS	(F) Shimano RM-50QR	BRAKELEVERS	See shifters
	(R) Shimano HG-50QR	EXTRAS	Touch up paint / Owners manual
GROUPSET	Shimano FD-M321 top pull / RD-M320 GS	SIZES	G-15/17/19/21"
SHIFTER(S)	Shimano ST-M320 Rapidfire +	COLOUR	Black with blue wave
BB PARTS	Shimano BB-LP20		



Together with the new Shimano Exage LT groupset, we design a splendid mountain bike for the recreational biker, who plays hard every time and expects also value for money.

With the Summit's True Temper AVR off-road tubed frameset, assembled with the Spinner light weight front fork is this bike the best in his segment.



EXAGE

KHS MONTANA CREST NA20

FRAME	KHS Concept tubing tig-welded (Lite Concept)	CHAINWHEEL/	
FRONTFORK	Spinner CR/MO - spiral stem	CRANK	Shimano FC-AT20 46X36X28T
HEADPARTS	Tioga SE II-S black	PEDALS	NW-99B CR/MO axle with toeclips
RIMS	(F) Weimann 2719 26X1.5 polished 36H	SEATPOST	PM-201 300SL
	(R) Weimann 2719 26X1.5 polished 36H	SADDLE	Avocet-MV
SPOKES	SS-14G	HANDLEBAR	MTB ST-110 black
TYRES	(F) Cheng Shin C1027 26X1.95 dark sidewall	HB STEM	MTS-31900 black
	(R) Cheng Shin C1027 26X1.95 dark sidewall	BRAKES	Shimano BR-CT10 Cantilever
HUBS	(F) Shimano HB-RM50QR	BRAKELEVERS	See shifters
	(R) Shimano FH-HG50QR	EXTRAS	Touch up paint / Owners manual
GROUPSET	Shimano FD-CT10 / RD-AT20 SGS	SIZES	G-15/17/19/21" L-17"
SHIFTER(S)	Shimano ST-AT20 Rapidfire +	COLOUR	Gents: red/blue, "American look" Ladies: dark purple
BB PARTS	Shimano BB-LP20		
FREEWHEEL	Shimano CS-HG50 13-30T 7S		



Our re-designed Montana Crest is an entry level mountain bike outfitted with a hard working combination of quality parts often omitted from other company's more expensive models.

This Crest is a symbol of reliability, based on KHS own "Liteconcept" frame tubes and the Shimano Altus groupset.



**SHIMANO
ALTUS**



KHS MONTANA TEAM JUNIOR NA04

FRAME	KHS Concept Tubing tig-welded	CHAIN/WHEEL/ CRANK	Shimano FC-TY21 48X38X28T cranklength 170L
FRONTFORK	Spinner unicornw - spiral stem	FREEWHEEL	Shimano HF-HG20 brown 14-28T 6S
HEADPARTS	Tioga SE II-S black	PEDALS	VP-892N CR/MO axle
RIMS	(F) RT-6N Alloy 24X1.5 polished	SEATPOST	PM-201 Alloy 250SL
	(R) RT-6N Alloy 24X1.5 polished	SADDLE	Viscount 2255
SPOKES	UCP-14G	HANDLEBAR	MT8 ST-110 black
TYRES	(F) Cheng Shin C1027 24X1.95 black sidewall	HB STEM	SLU-80AH-1 black
	(R) Cheng Shin C1027 24X1.95 black sidewall	BRAKES	Shimano BR-TY20 Cantilever
HUBS	(F) KT-565 Alloy sealed QR	BRAKELEVERS	264A-Alloy forged black
	(R) KT-562 Alloy sealed QR	EXTRAS	Touch up paint / Owners manual
GROUPSET	Shimano FD-TY21 / RD-CT20 GS with bracket	SIZES	G-16" - L-16"
SHIFTER(S)	Shimano ST-CT20 Rapidfire	COLOUR	Team colour blue/pink
BB PARTS	Tioga BB-201		



KHS Mountain Bike team
The Netherlands



Specially designed for future "Team members", because youngsters want their own Team bike. Easy, accurate gear shifts provide action packed enjoyment courtesy of Shimano's 18-speed Altus componentry.

A real off-road, sealed bottom bracket keeps dirt out of the workings, and we've even included brased-on water bottle bosses. So, again an "ULTIMATE BIKE".



SHIMANO
ALTUS

KHS CROSS COMFORT NC30C

FRAME	True Temper AVR, outer butted seattube O/S forged drop out - Geometric for city use	BB PARTS	Shimano BB-LP20
FRONTFORK	Uncrown full CR/MO steer tube - low rider bosses	CHAINWHEEL/ CRANK	Shimano FC-C700 w/chainguard 42X32X20T
HEADPARTS	Tioga SE II S sealed black	FREEWHEEL	Shimano HG70-C 11-19T 7S
RIMS	(F) Araya SS 45 700C 36H	PEDALS	VP-810
(R)	Araya SS 45 700C 36H	SEATPOST	Kalloy SP-264 300SL
SPOKES	stainless steel - DB 14G	SADDLE	Avocet W-L ladies / M-L gents (leather)
TYRES	(F) Avocet C1012 700X38	HB STEM	Zoom 170GR, black
(R)	Avocet C1012 700X38	BRAKES	Shimano BR-C701
HUBS	(F) Shimano FH-C700QR	SHIFTERS	See shifters
(R)	Shimano HB-C070QR	EXTRA'S	City pack compl.
GROUPSET	Shimano FD-C700 / RD-C700	SIZES	L-17/19" - G-19/21"
SHIFTER(S)	Shimano ST-C070 Rapidfire +	COLOUR	Purple/blue fading



SHIMANO
700CX

Our KHS product managers designed specially for the European market the Cross Comfort. This bike combines commuting and recreative purposes in an ULTIMATE way for ladies and gents.

Together with the True Temper AVR tubing we equipped the Cross Comfort with the new Shimano 700CX groupset to achieve a real lightweight leisure bike.



KHS CROSS CRUISE NC25C

FRAME	True Temper AVR, outer butted seattube O/S forged drop out - Geometric for city-use Uncrown full CR/MO steertube - lowrider bosses	BB PARTS	Shimano BB-LP20
FRONTFORK		CHAINWHEEL/CRANK	
HEADPARTS	Tioga SE II S sealed black	FREEWHEEL	Shimano FC-C400 w/chainguard 42X32X20T
RIMS	(F) Araya SS 45 700C 36H	PEDALS	Shimano HG50-C 11-19T 7S
	(R) Araya SS 45 700C 36H	SEATPOST	VP-810
SPOKES	stainless steel 14G	SADDLE	PM 201 300SL
TYRES	(F) Avocet C1012 700X38	HANDLEBAR	Avocet MV without clamp
	(R) Avocet C1012 700X38	HB STEM	SK2-AL 565 mm, black
HUBS	(F) Shimano FH-C400QR	BRAKES	CR/MO (raised type) MTS 18800-1-black
	(R) Shimano HB-C400QR	BRAKELEVERS	Shimano BR-C401
GROUPSET	Shimano FD-C400 / RD-C400	EXTRA'S	See shifters
SHIFTER(S)	Shimano ST-C400 Rapidfire +	SIZES	City pack compl. L-17/19" - G-19/21"
		COLOUR	Bluegrey



For shopping, fitness or weekend rides this bike combines all disciplines with real pleasure. Ofcourse the Cross Cruise is also equipped with lightweight components like Araya 700C rims, Avocet 700x38 city profile tyres, aluminium luggage carrier and Shimano 400CX groupset.



SHIMANO
400CX

CROSS CRUISE NC25C 14.7 KG

KHS CROSS SPORT NC20C

FRAME	KHS Lite Concept, outer butted seattube O/S forged drop outs-cityframe	CHAINWHEEL/ CRANK	Shimano FC-CT10 w/chainguard 48X38X28T
FRONTFORK	Unicrown CR/MO steerframe - low rider bosses	FREEWHEEL	Shimano CS-HG50 13-26T 7S
HEADPARTS	Tioga SE II S sealed black	PEDALS	NW99B without toeclips
RIMS	(F) Weinmann 2120 700C 36H Alloy polished	SEATPOST	PM 201 300SL
	(R) Weinmann 2120 700C 36H Alloy polished stainless steel 14G	SADDLE	Avocet MV
SPOKES		HANDLEBAR	SK2-ST 565 mm.steel black (slightly curved)
TYRES	(F) Cheng Shin C979 700X35	HB STEM	MTS 31900-1bk steel black (raised type)
	(R) Cheng Shin C979 700X35	BRAKES	Shimano CT20 Cantilever
HUBS	(F) KT565NC Alloy sealed QR	BRAKELEVERS	264A-1 Alloy forged
	(R) KT862R Alloy sealed QR	EXTRA'S	City pack compl.
GROUPSET	Shimano FD-CT20 / RD-CT10	SIZE	L-17/19" - G-17/19/21"
SHIFTER(S)	Shimano ST-CT10 Rapidfire	COLOUR	Purple with spots
BB PARTS	Tioga BB-201		



The KHS Cross Sport is our basic Hybrid model, city-pack equipped with lighting set, fenders, side-stand, luggage carrier and bell.

We have incorporated Shimano's Altus groupset with Rapidfire shifters to carry you and your luggage on an easy way throughout your country.



**SHIMANO
ALTUS**

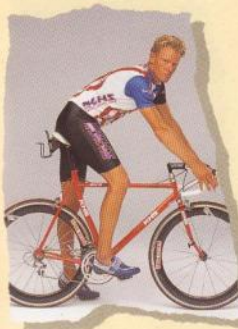


KHS AERO COMP NK800

FRAME	True Temper AVR RC-2, CR/MO stays, forged drop outs, bended seat tube, tig welded.	BB PARTS	Shimano UN-71
FRONTFORK	Spinner SPT-829JN CR/MO unicrown forged drop outs	CHAINWHEEL/ CRANK	Shimano FC-6400 SG round 53X42T
HEADPARTS	Shimano HP-6400	FREEWHEEL	Shimano CS-HG90-8 12-21T 8S
RIMS	(F) Araya CT-19 700C (size small 650C) (R) Araya CT-19 700C 32H	PEDALS	Shimano PD-1056 clipless
SPOKES	(F) Vittoria 700X22C (size small 650X22C-PANA)	SEATPOST	Kalloy-UNO SP-264 300L
TYRES	(R) Vittoria 700X22C	SADDLE	Bontrager VL-192T titanium
HUBS	(F) Shimano HB-6400 (R) Shimano FH-6402	HANDLEBAR	USA design light weight with U-bar
GROUPSET	Shimano FD-6401 / RD-6401	HB STEM	HECR-515B-1-LW single butted light weight
SHIFTER(S)	Shimano ST-6400 dual control lever	BRAKES	Shimano BR-6403
		BRAKELEVERS	See shifters
		SIZES	Small 45-51 / Medium 51-55 / Large 55-60CM
		COLOUR	Hot red



Erwin de Bruin -
run-bike-run-athlete



If you desire the **ULTIMATE** challenge, than you have the opportunity with the Aero Comp. For short track as well as for triathlon we offer you a special designed bike by ZH&B, USA.

This bike is equipped with Shimano 600-Ultegra dual-control lever, Araya CT-19 700C rims, Vittoria 700x22C tyres and Bontrager special saddle with titanium frame.



SHIMANO 600
ULTEGRA

AERO COMP NK800 10.0 KG

KHS AERO TEAM NK 500

FRAME	True Temper AVR O/S tig-welded tubing forged drop outs	CHAINWHEEL/ CRANK	Shimano FC-1056 53X42T round
FRONTFORK	Spinner SPT-825JN Lite road fork forged drop outs	FREEWHEEL	Shimano CS-HG70 12-21T 8S
HEADPARTS	Shimano HP-1055	PEDALS	Shimano PD-1056 clipless
RIMS	(F) Araya CT 19 700C 36H	SEATPOST	Kalloy SP-264 300L
	(R) Araya CT 19 700C 36H	SADDLE	Bontrager VL-192 steel frame
SPOKES	stainless steel - DB	HANDLEBAR	SR-custom CBM-201
TYRES F + R	Vittoria 700X22C Zefir	HB STEM	Kalloy KF-100
HUBS	(F) Shimano HB-1055	BRAKES	Shimano BR-1055
	(R) Shimano FH-1056	BRAKELEVERS	See shifters
GROUPSET	Shimano FD-1056 / RD-1056	EXTRA'S	Pump-peg, chain hook, WB-bosses, touch up paint, owners manual.
SHIFTER(S)	Shimano ST-1055 dual control lever	SIZES	52/54/56/58/60 CM
BB PARTS	Shimano BB-UN71	COLOUR	Team colour blue/pink



**SHIMANO 105
SC**

Using the True Temper AVR lugless tubing KHS designed a real road racing bike, equipped with the new Shimano 105SC groupset with dual-control lever and clipless pedals.

We've said it before, but the KHS Aero series deserves an encore - unrivalled performance for tomorrow and the future.



KHS AERO TURBO NK450

FRAME	True Temper AVR O/S tig welded tubing forged drop outs	CHAINWHEEL/ CRANK	Shimano FC-A500 52X42T
FRONTFORK	Unicrown, CR/MO steertube	FREEWHEEL	Shimano CS-HG50 13-23T 7S
HEADPARTS	Tioga Expert	PEDALS	VP-333A w/teclips & straps
RIMS	(F) Araya SS-45 700C 36h	SEATPOST	Kalloy SP-264 300L
	(R) Araya SS-45 700C 36h	SADDLE	Avocet racing II
SPOKES	stainless steel 14G	HANDLEBAR	SR-custom CBM-201
TYRES	(F) Cheng Shin C-948 700X23C	HB STEM	Kalloy KF-100
	(R) Cheng Shin C-948 700X23C	BRAKES	Shimano BR-A500
HUBS	(F) Shimano HB-RM50 sealed QR	BRAKELEVERS	Shimano BL-A500
	(R) Shimano FH-HG50 sealed QR	EXTRA'S	Pump-peg, chain hook, WB-bosses, touch up paint, owners manual.
GROUPSET	Shimano FD-A500 / RD-A500	SIZES	52/54/56/58/60 CM
SHIFTER(S)	Shimano SL-A500 down tube	COLOUR	Purple/blue fading
BB PARTS	Tioga BB-201		



For starters KHS designed in the entry level of roadracing bikes the Aero Turbo.

Semi-professional equipped with Shimano Exage 500EX groupset, Araya SS-45 700C rims, Avocet racing saddle and SR-custom handlebar together with the True Temper AVR lugless tubing the Aero Turbo offers you a smooth ride.



**EXAGE
500EX**

AERO TURBO NK450 10.5 KG

KHS TEAM ACCESSORIES

KHS waterbottles

Non-leaking polyethylene waterbottle with cap and nipple.
Recyclable, odourless, tasteless and F.D.A. approved.
Content : 0.5 Ltr. and 0.75 Ltr.



KHS helmets

Polystyrene helmet with hard microshell.
Provided with extra padding for individual comfort.
Approved by ANSI & SNELL norm B90.
Sizes : ES - L



KHS sportsbag

A jumbo sportsbag with 3 separate compartments.
One compartment can be zipped off for extra shoulderbag.



KHS waistbag

For easy carrying small items in zippered compartments.

KHS wallet

With neck-cord and keyring. Ideal for creditcards, paper money and small coins.



KHS TEAMWEAR

GAMEX® jacket of 100% polyester for protection against wind and rain. Breathable, very light and easy to carry.

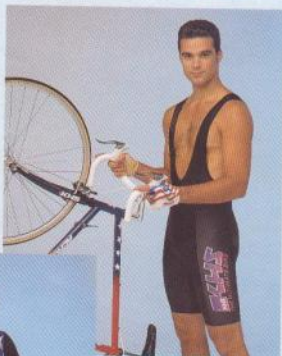
Sizes : ES - EEL

GAMEX

Bikeshort - Made of LYCRA®/nylon for maximum comfort and elasticity. The TRIPELLI® synthetic chamois transports moisture to the outside so that a perfect regulation of fluid will be obtained.

Sizes : ES - EEL

Also available with braces.



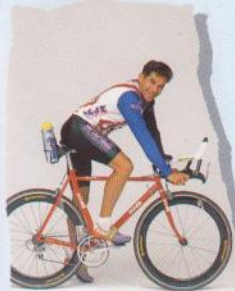
Bikeshirt TRITHERMO® - is made of a multicoating of three layers polyester-cotton. Transports perspiration away and keeps the skin dry. TRITHERMO® is colourfast and unshrinkable.

Also available with long sleeves. Sizes : ES - EEL

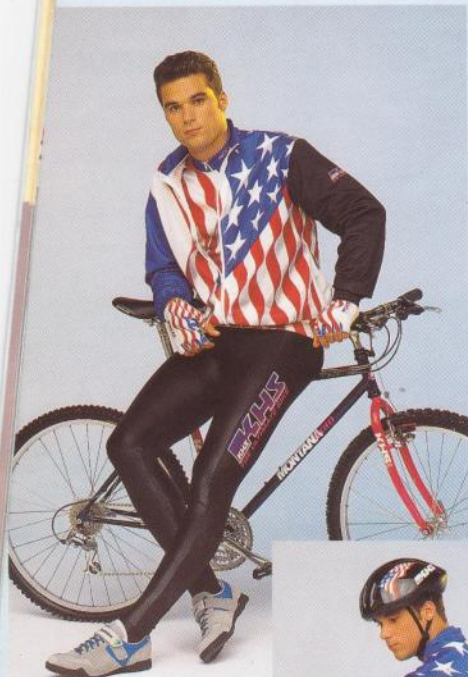
Gloves - Summergloves of LYCRA®/nylon with TRIPELLI® fabric in handpalm for absorbing shocks and ideal grip. Sizes : ES - EEL

Wintergloves of LYCRA®/nylon with finger polstering for extra protection and leather handpalm. Sizes : S - EEL

Ben van Zelst - 1991 European Champion Triathlon



KHS TEAMWEAR



Trainingsjack of 100% acetate, ideal for training purposes.

Sizes : ES - EEL

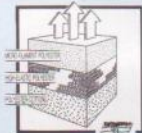
Tight - Lightweight garment and aerodynamic designed. Made of LYCRA[®]/nylon and ideal for cold and bad weather conditions. Sizes : ES - EEL

POLAIR[®] fleece jacket - Made of 100% brushed nylon. Warm, comfortable, light and breathable. Sizes : ES - EEL (not pictured)



Windjacket with nylon frontside for protection against wind and rain. Backside is made of tri-acetate for required ventilation. Sizes : ES - EEL

Bikeshirt TRITHERMO PLUS[®] Same specifications as TRITHERMO[®] shirt but with wind- and waterrepellent coating. Ideal for colder days. Only available with long sleeves. Sizes : ES - EEL



Marjan Jauk, KHS Mountain Bike team - Slovenia



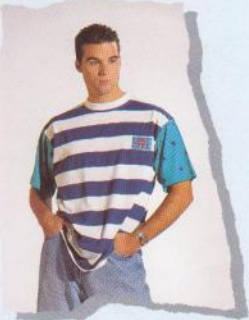
KHS, THE ULTIMATE GEAR

DESIGNED BY OCEAN PACIFIC



PHILIP - Classic single jersey T-shirt with "KEEP ON GOING" backprint. 100% cotton.
Colours : ecru, peach, black, purple, seagreen and cyclame
Sizes : S - EL

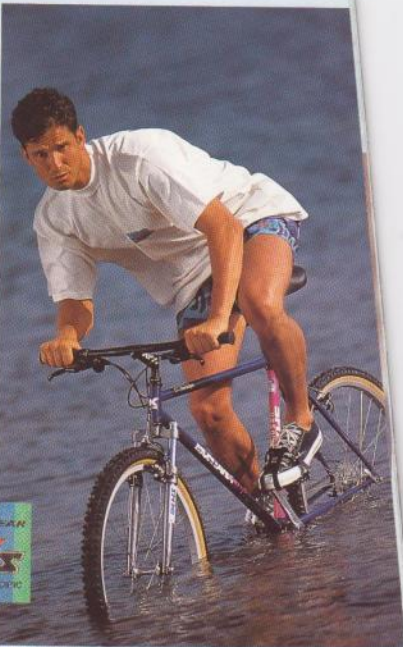
RICHARD - Compression short with LYCRA® tight and TACTEL® short. Backpacket with VELCRO®.
Colours : cyclame/peach, purple/seagreen
Sizes : S - EL



EDWARD - All american "STARS & STRIPES" T-shirt in cotton single jersey.
Colours : ultra blue with ecru, red with ecru
Sizes : S - EL

RUDY - 3-button poloshirt with "KEEP ON GOING" backprint in 100% cotton heavy jersey.
Colours : peach, red, ultra blue and black.Sizes : S - EL

VINCENT - Washed heavy twill walkshort with backpacket. Most comfortable fit.
Colours : sand, ultra blue and red. Sizes : S - EL



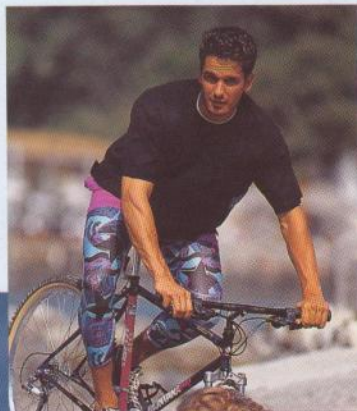
MURPHY - Allover-printed polyester short with inner-brief. Breathable and quick drying. Backpacket with VELCRO®.
Colours : peach, purple, cyclame
Sizes : S - EL



KHS, THE ULTIMATE GEAR

KHS, THE ULTIMATE GEAR

DESIGNED BY OCEAN PACIFIC



DENNIS - Heavy jersey frontpocket T-shirt with "STARS" backprint in 100% cotton.

Colours : red, peach, ultra blue, black

Sizes : S - EL

JOHN - Allover-printed active tight of polyester/LYCRA®

Colours : seagreen, peach

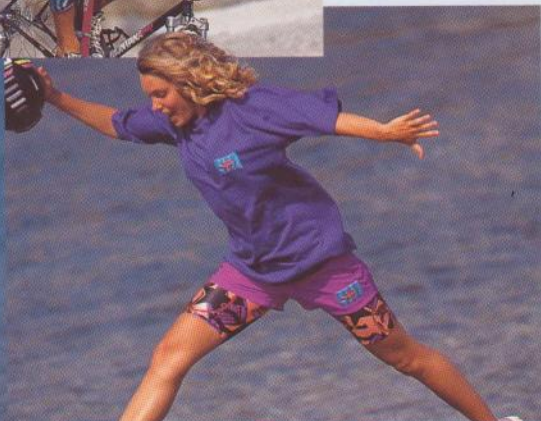
Sizes : S - EL



PHILIP - Classic single jersey T-shirt with "KEEP ON GOING" backprint. 100% cotton.

Colours : ecru, peach, black, purple, seagreen and cyclame

Sizes : S - EL



RICHARD - Compression short with LYCRA® tight and TACTEL® short. Backpocket with VELCRO®.

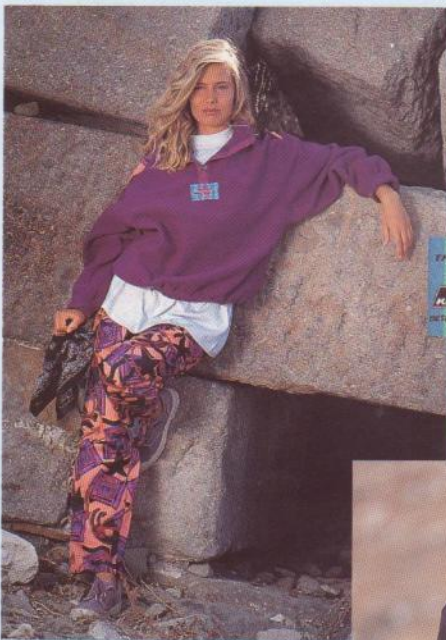
Colours : cyclame/peach, purple/seagreen

Sizes : S - EL



KHS, THE ULTIMATE GEAR

DESIGNED BY OCEAN PACIFIC



DARRYL - 3-button anorak in heavy polar fleece with top print.

Colours : heather blue, cyclame

Sizes : S - EL



MURPHY - Allover-printed polyester short with inner-brief.

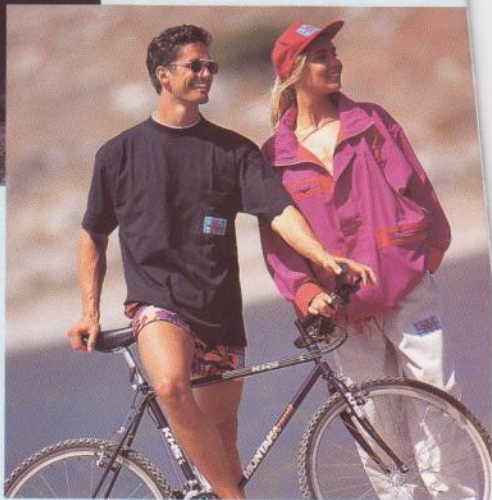
Breathable and quick drying. Backpocket with VELCRO®.

Colours : peach, purple, cyclame

Sizes : S - EL

BOBBY - Polyester lightweight pants, full printed. In seagreen - and peach print

Sizes : S - EL

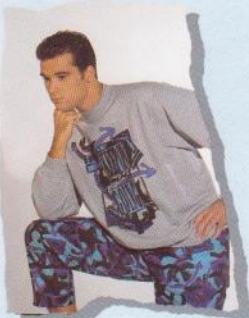


BRIAN - All weather type jacket in polyester/cotton.

Tonal coloured. Colours : seagreen/purple, cyclame/red. Sizes : S - EL

CRAIG - Baggy pants of washed heavy cotton twill.

Backpocket with VELCRO®. Colours : sand, ultra blue and red. Sizes : S - EL



RICK - Oversized classic american sweatshirt with double collar and "KEEP ON GOING" frontprint.

Colours : heather grey, black, ultra blue and peach. Sizes : S - EL

KHS, THE ULTIMATE GEAR

AUSTRIA	Meytra b.v. (European Sales Office) P.O. Box 109, 1420 AC Uithoorn The Netherlands Tel. 31-(0)2975 77592 Fax 31-(0)2975 77594	THE NETHERLANDS	Yamaha Motor Nederland B.V. P.O. Box 109 1420 AC Uithoorn Tel. 31-(0)2975 77415 Fax 31-(0)2975 77439
BELGIUM & LUXEMBURG	D'Ieteren Sport S.A. Parc Industriel de la Vallée du Hain 1440 Wauthier-Braine Tel. 32-(0)2 3689933 Fax 32-(0)2 3681521	NORWAY	Sætrang Sport Drammensveien 302 1324 Lysaker Tel. 47-(0)2 530610 Fax 47-(0)2 582012
DENMARK	Meytra b.v. (European Sales Office) P.O. Box 109, 1420 AC Uithoorn The Netherlands Tel. 31-(0)2975 77592 Fax 31-(0)2975 77594	PORTUGAL	Meytra b.v. (European Sales Office) P.O. Box 109, 1420 AC Uithoorn The Netherlands Tel. 31-(0)2975 77592 Fax 31-(0)2975 77594
FINLAND	CA-PE Import KY Vesikuja 3 02200 Espoo Tel. 358-0-4521700 Fax 358-0-4521701	SLOVENIJA	Motoclub D.O.O. Gubčevce Brigade 1 61108 Ljubljana Tel. 38-(0)61 211490 Fax 38-(0)61 211490
FRANCE	USA BIKE 12 rue de la Liberté 01000 Bourg en Bresse Tel. 33-(0)73 935679 Fax 33-(0)74 326756	SPAIN	ATODA S.A. Ferrocarril S/N 2200 Jaca (Huesca) Tel. 34-(9)74 363612 Fax 34-(9)74 363837
GERMANY	Alfred Strauch GmbH Mainzer Strasse 276 6600 Saarbrücken Tel. 49-(0)681 81 080 Fax 49-(0)681 81 0810	SWEDEN	Meytra b.v. (European Sales Office) P.O. Box 109, 1420 AC Uithoorn The Netherlands Tel. 31-(0)2975 77592 Fax 31-(0)2975 77594
ITALY	Belgarda S.p.A. Via Tinelli 67/69 20050 Gemo di Lesmo Tel. 39-(0)39 60961 Fax 39-(0)39 6064379	SWITZERLAND	VTT CYCLE DIFFUSION Brunnenweg 4 CH-3186 Düringen Tel. 41-(0)37 434503 Fax 41-(0)37 434505
ISRAEL	LTS (1983) L.T.D. Yehudit Blvd. Tel-Aviv 67016 Tel. 972-(0)3 5626111 Fax 972-(0)3 5626010	UNITED KINGDOM	Towisure Leisure Holme Lane, Hillsborough Sheffield S6 4JR South Yorkshire Tel. 44-(0)742 330333 Fax 44-(0)742 855111

EUROPE

Meytra b.v. (European Sales Office)
P.O. Box 109, 1420 AC Uithoorn
The Netherlands
Tel. 31-(0)2975 77592
Fax 31-(0)2975 77594

Authorized Dealer: