

Live Fat  
And City  
Uncut Cycles





I was wondering if you could help me out in a big way. Could you give me a very sweet deal (very very cheap or free) on a Yo Eddy (blue) Team, Please??? I would be very thankful! ..... **So hats off to Fat City Cycles!**

**Bugs in your teeth & mud in your face & may a steaming cow pie find you early one spring morn!** ..... I test rode a Fat Chance that they had in stock & it took me two minutes to realize what a great bike it is (they have some gravel & some hills near the shop) and the rest of the test ride was spent just enjoying it..... I am starting to collect pictures of dead presidents which I hope to exchange for one of your bikes in the next few months. (I might have been able to swing it sooner, but my kids found out the other kids at school were eating three times a day). .... **I am awaiting my Wicked-and I shiver in anticipation!**..... I've come to the conclusion this frame is an incredible achievement of philosophy, design, construction and product integrity. The bike is amazing. It lets me ride harder, faster, longer with more control than ever before. The bike is agile, responsive, stable and the acceleration is awesome. .... I feel as I owe you a fat thanks for contributing greatly to my sanity maintenance program. Resisting mediocrity is something the people at Fat seem to ooze beside the mud on the tires of their slim and fat bikes. Must also add that my father is also a proud owner of a fluorescent orange Fat Chance..... You have managed to combine light-weight climbing, sure handling, fine shock-absorption and accurate descending in one piece of skilled craftsmanship..... **They put me back together and all that**

**happened to the bike is a little chipped paint.** ..... You do a really good job in your endeavors & here is a happy camper out West. .... 6 months have passed & the newness still hasn't worn off - feels like the first time each ride!! ..... **Thanks for creating the perfect bicycle. I wish everyone could be Wicked Fat.** ..... Wow, Fat City Cycles! Quick response on my request for a catalog, and a handwritten note too! Only in America. Thanks for the person service..... My Slim is by far the best riding and efficient bicycle I have ridden..... thank the above craftsman..... invitation: You are welcome! ..... The handling, the power, the quickness and the climbing - boy that climbing, it's just incredible..... Only one thing to say - what a bike!! Nobody builds'm like you guys..... Ever since I started mt bikeing I've dreamed (realizing) of owning a Fat. .... I wanted to thank you again for the Yo Eddy. I can't believe how absolutely wonderful this bike is..... Yo Eddy! Says every Awes thing! bil





built by hand by people who care – and seem to have a great time doing it. .... My Yo Eddy is presently insured by two insurance companies. .... This is one tough sucker..... The craftsmanship complements the design..... Resisting mediocrity..... I really feel like I got my money's worth – and that means a lot. .... A Fat City bike does it all –slices, dices, makes julienne fries..... true blue Fat fans..... Since the early 70's I have

lived bicycles..... "articles de FAT" ..... I'm a 14-year-old mt biker, I love to ride and race..... Be the first (and only) on my block to own a Fat City. (Gotta stay ahead of the Jones)..... Yo Eddy Mascot looks like my mother-in-law...only cuter! ..... It is most refreshing that after all the accolades you have received, you still have that enthusiasm. Please, keep up the great work..... I love the way this thing can be laid into a turn..... I love my Yo Eddy..... **Wicked, Wicked, Wicked** ..... Buy

American! ..... **The #1 reason I want a Fat City...Fat City! More than a bike – it's a lifestyle!!** ..... Thanks – Chris and the delightful lady who answered my Sunday phone call – and more importantly returned it..... **These bikes must be extremely strong, as my bike and I were thrown so violently. The witnesses thought I must be dead, but the frame showed almost no damage. (I'm ok also).** ..... Most people don't realize how special a bike can become, it actually becomes a part of you..... I have New Bicycle 21 speeds Wicked Fat Chance \$1,400.00! True finest True work fast Go, Go! Use for "RACE" ..... I believe if my bike had been anything other than a FAT CHANCE, the company probably

**Thanks for the god-welded frames.**..... With the exception of my fiancée, that

bike is probably the best built, most enjoyable thing I've got. I really take pride in owning a Fat Chance, ..... The craftsmanship complements the design..... **Thanks for building such intense bicycles.**..... Visit the shrine in

Somerville..... I want you to know that owning a bike of this quality is something I never thought would come true, but I have saved and I am spending every dollar I have scraped together to get this bike..... **Elvis rides a Fat City. I know, he passed me on a radical downhill last week. I'm sure it was him, Bill Bixby and a camera crew were chasing him. .... I didn't take a CHANCE when I bought my second Monster Fat frame set. The first Fat, born Jan 10, 1989 goes to my wife. The new one is mine.**..... Just go my Yo Eddy – didn't know a mountain bike could be this good. I'm

spreading the word..... I would be honored if I could pay you..... place a visit, to actually behold the birthplace of these miracles..... **I must congratulate you on producing an all out kinetic sculpture.** ..... Eddy is the best bike in the world..... As of 10/88 my boyfriend became the owner, and very proud one at

that, of one of your Wicked Fat Chance..... Since then all he thinks is Fat Chance..... at Chance. Fat

Chance..... **The Chance a through Slim** ..... Life

without my bike f..... as been miser-able..... Qual..... /love radi-ates from eve..... square inch of my..... Yo!

Apathy

Pain

Patience



rejoice



Death

exchange

*Wheels of fortune.*



*Wheels of choice.*









# YO EDDY!

in custom Team Jersey paint with Grafton/Ringle/SunTour group



YO EDDY!  
**specs**

A tremendous amount of technology goes into this quad butted and heat treated tubeset. Simply put, it's incomparable. Our Yo Eddy! fork is designed, patented and built by us. It features butted blades and "point where you go" performance. This frameset is designed for the all-out high performance rider. It's stiff and nimble and, not surprisingly, loved by many.

SIZE	STAND OVER HEIGHT	TOP TUBE LENGTH*	HEAD TUBE ANGLE	SEAT TUBE ANGLE	FORK RAKE	CHAINSTAY LENGTH	BRACKET HEIGHT	WHEEL BASE	HEAD TUBE LENGTH	FRONT DERAILLEUR SIZE	SEAT POST SIZE
SMALL	28"	22"	71°	72°	1.5"	16 7/8"	11 7/8"	40.4"	90mm	1 1/4"	29.4 mm
SMALL/MEDIUM	28.5"	22.5"	71°	72°	1.5"	16 7/8"	11 7/8"	40.9"	98mm	1 1/4"	29.4 mm
MEDIUM	29.5"	23"	71°	72°	1.5"	16 7/8"	11 7/8"	41.4"	98mm	1 1/4"	29.4 mm
MEDIUM/LARGE	30.2"	23.3"	71°	72°	1.5"	16 7/8"	11 7/8"	41.7"	123mm	1 1/4"	29.4 mm
LARGE	31.5"	23.6"	71°	72°	1.5"	16 7/8"	11 7/8"	42"	149mm	1 1/4"	29.4 mm

\*measured center to center parallel to the ground



in custom Team Violet with Shimano XT1 group

# WICKED LITE







Built for the first time in 1986, this bicycle has become a classic. For 1993, we've lightened it up with some new heat treated tubes and added top tube cable routing. On account of the smaller diameter of the tubes, longer chainstays and longer fork rake, the Wicked Lite is more comfortable and more forgiving than the Yo Eddy! The hand built unicrown fork is also built by us here in Somerville.

SIZE*	STAND OVER HEIGHT	TOP TUBE LENGTH	HEAD TUBE ANGLE	SEAT TUBE ANGLE	FORK RAKE	CHAINSTAY LENGTH	BRACKET HEIGHT	WHEEL BASE	HEAD TUBE LENGTH	FRONT DERAILLEUR SIZE	SEAT POST SIZE
14"	26"	20.9"	71°	72°	1 3/4"	17 1/8"	11 7/8"	39.7"	90mm	1 1/8"	26.4mm
16.5"	27.5"	21.7"	71°	72°	1 3/4"	17 1/8"	11 7/8"	40.5"	90mm	1 1/8"	26.4mm
18"	29"	22.2"	71°	72°	1 3/4"	17 1/8"	11 7/8"	41.1"	90mm	1 1/8"	26.4mm
18ST	29"	21.2"	71°	72°	1 3/4"	17 1/8"	11 7/8"	40.1"	90mm	1 1/8"	26.4mm
19.5"	30.5"	22.8"	71°	72°	1 3/4"	17 1/8"	11 7/8"	41.7"	98mm	1 1/8"	26.4mm
19.5ST	30.5"	21.8"	71°	72°	1 3/4"	17 1/8"	11 7/8"	40.7"	98mm	1 1/8"	26.4mm
21"	32"	23.4"	71°	72°	1 3/4"	17 1/8"	11 7/8"	42.3"	133mm	1 1/8"	26.4mm
23"	34"	23.8"	71°	72°	1 3/4"	17 1/8"	11 7/8"	42.7"	184mm	1 1/8"	26.4mm

\* measured center of bottom bracket to top of top tube



Silver



Tin



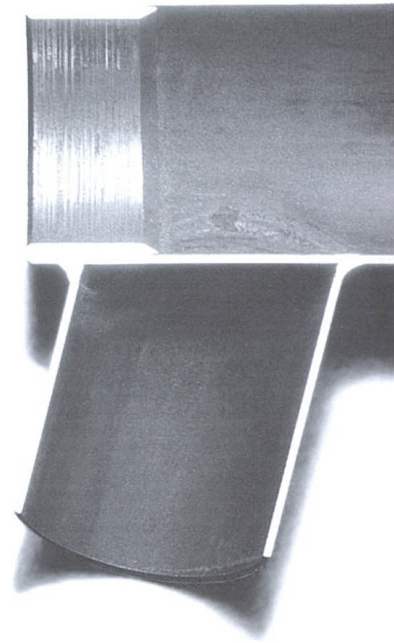
Copper



Zinc



Iron filings



### WHAT WE'RE MADE OF

We use chrome-moly and titanium in the creation of our frames and forks. In fact, very high tech chrome-moly and the best titanium currently available. And, yes, a lot of other people use chrome-moly and titanium to build their frames. So what sets us apart? Two things: our uncompromising standards, and the people who uphold them on a daily basis.



Gold



Minium



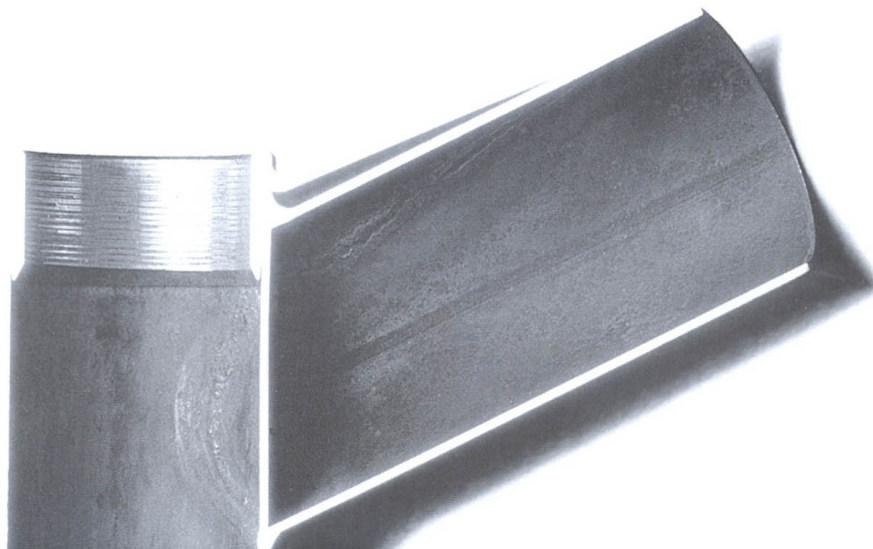
Steel



Iron



Brass







# MONSTER FAT

in custom olive with Tange suspension fork and Shimano Deore DX group





MONSTER FAT

Offering superb performance for a reduced price, the Monster's built with a third True Temper tubeset. With geometry similar to the Yo Eddy!, this bike offers most of the performance at a more affordable price. For 1993, its got a 29.4mm post diameter in a 1.25" seat tube like the Yo Eddy! for greater stiffness on those extended seat posts. The rear end has wishbone stays and we offer a number of fork options for the front end.

SIZE	STAND OVER HEIGHT	TOP TUBE LENGTH*	HEAD TUBE ANGLE	SEAT TUBE ANGLE	FORK RAKE	CHAINSTAY LENGTH	BRACKET HEIGHT	WHEEL BASE	HEAD TUBE LENGTH	FRONT DERAILLEUR SIZE	SEAT POST SIZE
EXTRA SMALL	TBA	TBA	TBA	TBA	TBA	16 7/8"	TBA	TBA	TBA	1 1/4"	29.4 mm
SMALL	28"	22"	71°	72°	1 3/4"	16 7/8"	11 7/8"	40.7"	90 mm	1 1/4"	29.4 mm
MEDIUM	29.5"	23"	71°	72°	1 3/4"	16 7/8"	11 7/8"	41.7"	98 mm	1 1/4"	29.4 mm
LARGE	31.5"	23.6"	71°	72°	1 3/4"	16 7/8"	11 7/8"	42.3"	149 mm	1 1/4"	29.4 mm

\*measured center to center parallel to the ground



**A** **BERCROMBIE** (n) A know-it-all.  
**AIRBAGS** (n. pl.) Lungs.  
**ALREET** (adv) Absolutely okay.  
**ANGLE** (n) A clever idea.  
**AQUARIUM** (n) Domicile.  
**ARTILLERY** (n) Baked beans.  
**BAGPIPE** (n) One who talks too much or a vacuum cleaner.  
**BANK** (n) A toilet.  
**BARK** (n) The skin.  
**BARRELHOUSE** (adj) Loud music or unrestrained.  
**BASH** (v) To overeat.  
**BEAGLE** (n) A frankfurter.  
**BEAM** (n) A great person.  
**BEANS** (n. pl.) Loose change.  
**BELCH** (v) To talk too much.  
**BENDER** (n) A wild spree.  
**BERRY** (n) A dollar.  
**BILLPOSTER** (n) A forger.  
**BISCUIT** (n) The head.  
**BLINKERS** (n. pl.) Eyes.  
**BLOOD** (n) Tomato juice.  
**BOMBS** (n. pl.) Eggs.  
**BONDAGE** (adv) Being in debt.  
**BOOT** (v) To clarify or understand.  
**BRIGHT** (n) Day.  
**BUG** (n) A problem.  
**BUGHOUSE** (n) Tourist camp.  
**BUSHED** (adj) Exhausted.  
**BUZZ** (v) To kiss.  
**CABBAGE** (n) Money.  
**CAP** (v) To outdo oneself.  
**CAVE** (n) House.  
**CERT** (adj) Certainly.  
**CHEW** (v) To talk.  
**CHIME** (n) The time.  
**CHOKER** (n) A tie or collar.  
**CLAMBAKE** (n) Jive session.  
**CLICKER** (n) One who has attained success.  
**CLOCKER** (n) The heart.  
**CLUCKER** (n) Super-dunce.  
**COGS** (n. pl.) Sunglasses.  
**COLLAR** (v) To catch on.  
**COLLEGE** (n) Jail.  
**COLTS** (n. pl.) Youths.

**CRATE** (n) An old dilapidated vehicle.  
**CRIX** (n. pl.) Critics.  
**CRUNCHY** (n) The pavement.  
**CUFF** (adj) Free.  
**CUT** (v) To stop operation.  
**DEAD** (adj) Empty.  
**DICKEROO** (n) Policeman.  
**DIG** (v) To think hard or understand.  
**DIM** (v) Twilight.  
**DOG** (n) Mediocre song.  
**DOME** (n) Your head.  
**DOSS** (v) To sleep.  
**DRAPE** (n) Suit.  
**DREAMBOX** (n) Your head.  
**DRIBBLE** (v) To stutter or talk without coherence.  
**DRILL** (v) To take a stroll.  
**DRINK** (n) A body of water.  
**DUCHESS** (n) The girlfriend.  
**DUCKS** (n. pl.) Admission tickets.  
**DUST** (v) To leave.  
**ENAMEL** (n) Teeth or skin.  
**EXODUST** (v) To flee.  
**EXPENSE** (n) A baby.  
**FEELERS** (n. pl.) Your fingers.  
**FISH** (v) To lie.  
**FIXER** (n) One skilled in evasion.  
**FLAT** (n) An uninteresting person.  
**FLICKERS** (n. pl.) Motion pictures.  
**FLIPPERS** (n. pl.) Your ears.  
**FLOPPEROO** (n) A failure.  
**FORKS** (n. pl.) Your fingers.  
**FRAME** (n) Your body.  
**FRANTIC** (adj) Excellent.  
**FROGSKIN** (n) \$1 bill.  
**FRY** (v) Mechanically straighten kinky hair.  
**FUSS** (v) To embarrass.  
**GAMMIN** (v) To strut.  
**GAS** (v) To engage in conversation.  
**GATEMOUTH** (n) A gossip.  
**GIGGLE** (n) Professor.  
**GOAT** (n) New club member.  
**GOO** (n) Luncheon.  
**GOOLA** (n) A piano.  
**GRANDSTAND** (v) To show off.  
**GRASS** (n) Crew haircut.

**GROUNDPADS** (n. pl.) Your feet.  
**GUTBUCKET** (n) Lowdown blues or joint.  
**HANDCUFFED** (adj) Married.  
**HAPPIFY** (v) To make happy.  
**HEADLIGHTS** (n. pl.) Substantial diamonds.  
**HIDEAWAYS** (n. pl.) Your pockets.  
**HOMEY** (n) Someone from your home town.  
**HUMMER** (n) One who gets there.  
**HUSKINGS** (n. pl.) Left-overs.  
**ICKY** (adj) Conservative person.  
**IDIOT** (n) Educated moron.  
**JELLY** (adv) On the cuff.  
**JIVER** (n) Hepcat who knows the ropes.  
**KILLER** (n) Hair grease.  
**KNOB** (n) A homely face.  
**KNOCK** (v) To let one have it.  
**LANE** (n) A wise guy.  
**LEAKY** (n) One who talks too much.  
**LIP** (n) An attorney.  
**MASH** (v) To give.  
**MEZZ** (n) Perfection.  
**MIKES** (n. pl.) Your ears.  
**MOP** (n) The finale.  
**MOSS** (n) Your hair.  
**MURDER** (v) To reach perfection.  
**NAME** (n) Most popular band at the moment.  
**NAPOLEON** (n) Man with grandiose ideas.  
**NEEDLE** (n) Soft drink.  
**NODBOX** (n) Bedroom.  
**OIL** (n) Form of flattery.  
**PAIL** (n) Your stomach.  
**PANIC** (v) To thrill.  
**PECKINGS** (n) Type of food.  
**PERCOLATE** (v) To meander.  
**PICKERS** (n. pl.) Your fingers.  
**PINCHERS** (n. pl.) Tight pair of shoes.  
**PLATTERS** (n. pl.) Big feet.  
**PLUNGER** (n) The bathtub.  
**PRETZEL** (n) French horn.  
**PULLEYS** (n) Pair of suspenders.  
**PUMPKIN** (n) The sun or the moon.  
**RANK** (v) To criticize.  
**RAZZMATAZZ** (n) Super-ridicule.  
**RIDING** (adv) Acting in perfect rhythm.  
**ROCKPILE** (n) A very tall building.

**ROOST** (n) Your house.  
**ROUNDHEEL** (n) A pushover.  
**RUBBER** (n) An automobile.  
**RUGGED** (n) Wonderful.  
**SAFETY** (n) A bed.  
**SAILS** (n. pl.) Ears.  
**SAW** (n) Mean landlady.  
**SAWBUCK** (n) \$10 bill.  
**SCREAMERS** (n. pl.) Newspaper headlines.  
**SCUFFLER** (n) Dancer or hard worker.  
**SEND** (v) To arouse the emotions.  
**SHUTTERS** (n. pl.) Your eye-lids.  
**SKULL** (n) One who is tops in his profession.  
**SLANTERS** (n. pl.) Your eyes.  
**SNACKETEER** (n) One who eats between meals.  
**SNIFFER** (n) Handkerchief.  
**SOLID** (adj) Peak of perfection.  
**SPOUTING** (v) To talk verbosely.  
**SQUATTER** (n) A chair.  
**SQUEEZER** (n) A tight belt.  
**STILTS** (n. pl.) Your legs.  
**STOMPERS** (n. pl.) A pair of shoes.  
**STORKED** (adj) Expecting a blessed event.  
**STRETCHER** (n) Your neck.  
**STRUGGLE** (v) To dance.  
**STUMPS** (n. pl.) Your legs.  
**SWOBBLE** (v) To gobble.  
**TATTLER** (n) An alarm clock.  
**TEARS** (n) Pearl necklace.  
**THINKBOX** (n) Your brain.  
**TINKLER** (n) The doorbell.  
**TOOL** (v) To travel leisurely.  
**TREADERS** (n. pl.) Boots.  
**UNLEASH** (v) To hand.  
**UPSTAIRS** (n) Blue sky.  
**VINE** (n) Suit of clothing.  
**WASHER** (n) Cafe.  
**WELDER** (adj) Married.  
**WHAM** (inter) Great.  
**WIGGLERS** (n. pl.) Fingers.  
**WOODPILE** (n) Xylophone.  
**YAM** (v) To dine.  
**YANK** (n) A dentist.  
**ZOMBIE** (n) Slow witted person.  
**ZOWIE** (inter) Exclamation of approval.



**Blah.  
Blah.  
Blah.**

Don't just talk about it. Ride us and write us at Fat City Cycles; PO Box 218, Somerville, MA 02143 USA.

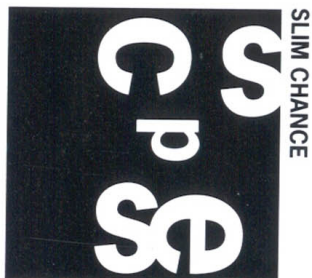


in custom IMRON #5351 Blue with Campagnolo Chorus group

# SLIM CHANCE







Every year at the trade shows, the Italian framebuilders come by to ogle our road bike, affectionately named the Slim Chance. And every year they say the same thing. "Bellissimo!" Of course, looks are one thing and performance is another.

Slim customers describe this bike as "totally confidence inspiring" and "handling and tracking better than most anything" they've ridden. The Columbus TSX tubing and TIG welding contribute to this ride quality. As for the frame design, that's a function of Chris Chance's 16 years of successful frame designing experience.

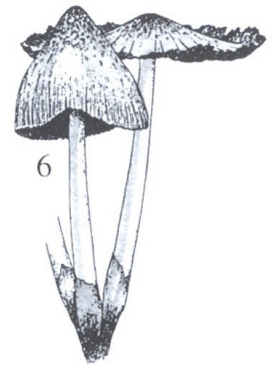
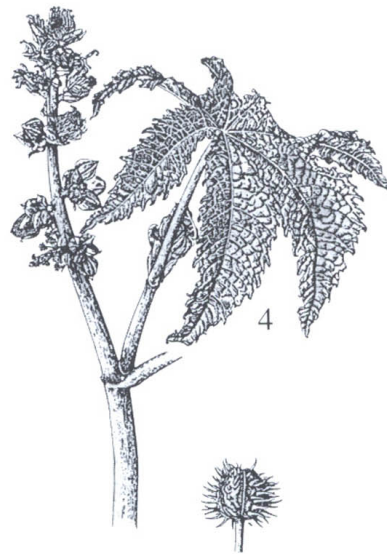
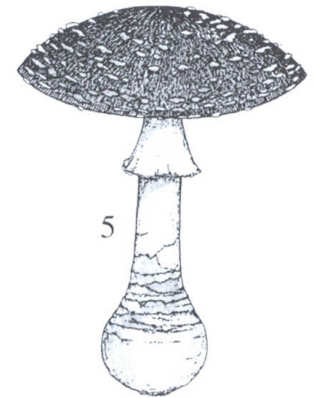
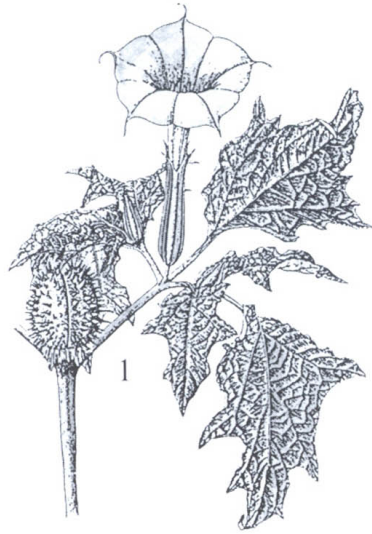
In fact, way before there was a Fat Chance, there were Chris Chance Cycles. Each uniquely built and designed to excel in a diverse group of applications. Time trial bikes. Criterium bikes. Unicycles. You get the competitive advantage of many years of framebuilding experience in each and every Slim.

SIZE *	STAND OVER HEIGHT	TOP TUBE LENGTH	HEAD TUBE ANGLE	SEAT TUBE ANGLE	FORK RAKE	CHAINSTAY LENGTH	BOTTOM BRACKET DROP	WHEEL BASE	HEAD TUBE LENGTH	FRONT DERAILLEUR SIZE	SEAT POST SIZE
52CM	30.7"	54 cm	72.5°	74°	4.45 cm	41.5 cm	7.3 cm	98.6 cm	105 mm	1 1/8"	26.8 mm
54CM	31.4"	55.5 cm	73°	74°	4.1 cm	41.5 cm	7.3 cm	99.5 cm	122 mm	1 1/8"	26.8 mm
56CM	32.1"	57.2 cm	73.5°	73°	4 cm	41.5 cm	7.3 cm	99.6 cm	137 mm	1 1/8"	26.8 mm
58CM	32.9"	58.5 cm	73.5°	73°	4 cm	41.5 cm	7.3 cm	100.8 cm	157 mm	1 1/8"	26.8 mm
60CM	33.6"	59.5 cm	73.5°	73°	4 cm	41.5 cm	7.3 cm	101.8 cm	182 mm	1 1/8"	26.8 mm

\*measured center to center



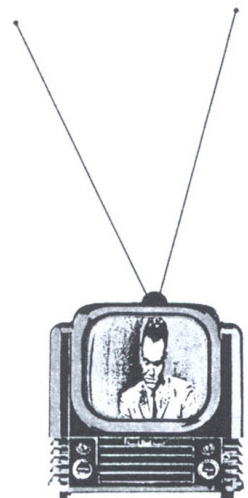
7 poisonous plants and mushrooms growing wild around the world.



**1. Jimsonweed** Other common names: Thornapple, Jamestown Weed, Strikweed; *Scientific name:* *Datura stramonium*; *Location:* Found throughout the West Indies, Canada, and the United States, including Hawaii but not Alaska; *Dangers:* The whole plant is poisonous and even the nectar from the flower contains enough poison to make a child sick. **2. Manchineel** Other common names: none; *Scientific name:* *Hippomane mancinella*; *Location:* This flowering plant grows along the shores of all Caribbean islands and along the eastern shore of Central America. It is also found on the extreme southern tip of Florida; *Dangers:* The Manchineel produces a thick, milky sap which causes burning and blistering. The fruits are the most poisonous parts of the plant. Ingesting the fruit may cause severe stomach pain, internal bleeding, and rarely, death. **3. Deadly Hemlock** Other common names: Spotted hemlock; *Scientific name:* *Conium maculatum*; *Location:* Originally a native of Europe, it grows throughout the world. It is very common along the sides of country roads; *Dangers:* The stem and leaves are the most poisonous parts of the plant. Accidental poisonings are rare as the smell of Spotted hemlock has been compared to that of cat urine. **4. Castor Bean** Other common names: Castor oil plant, palma Christi; *Scientific name:* *Ricinus communis*; *Location:* Depending on the climate in which it is grown, the castor bean ranges from a small plant to a large tree. In warm climates, a small tree is formed. In tropical Asia and Africa it may grow to heights of forty feet; *Dangers:* If the plant produces fruit, no matter what its size, it is potentially dangerous because each fruit has 3 poisonous seeds. As few as 2 seeds can be fatal if chewed and swallowed. **5. The Fly Mushroom** Other common names: Fly agaric; *Scientific name:* *Amanita muscaria*; *Location:* Found throughout the United States, Europe and Asia, usually growing in woods (especially pine woods); *Dangers:* The principal poison, muscarine, causes symptoms of blurred vision, sweating, lowered blood pressure, an abnormally slow heartbeat, stomach pain, and difficulty in breathing. **6. Inky Cap Mushroom** Other common names: none; *Scientific name:* *Coprinus atramentarius* (there are many other species known as "inky caps" and many are not poisonous); *Location:* Europe and the United States; *Dangers:* For a few people, under certain circumstances, the inky cap mushroom is a poisonous plant. To be poisonous, this mushroom must be eaten with alcoholic beverages such as beer, wine, or whiskey. The mushroom will cause their face and other parts of their bodies to turn a deep purple-red. **7. Deadly Amanita Mushroom** Other common names: Death Angel, Destroying Angel, Death Cup; *Scientific name:* *Amanita phalloides* (also *A. verna*, *A. virosa*, and *A. bisporingeri*); *Location:* In almost every state, in all Canadian provinces, and throughout Europe. Its usual habitat is woodlands, but it is very occasionally found in pastures and grasslands; *Dangers:* The deadly amanita is the most poisonous mushroom. Even a piece of one mushroom is enough to kill an adult, a forkful can be fatal to a child.



don't  
↑  
TOUCH  
↓  
out







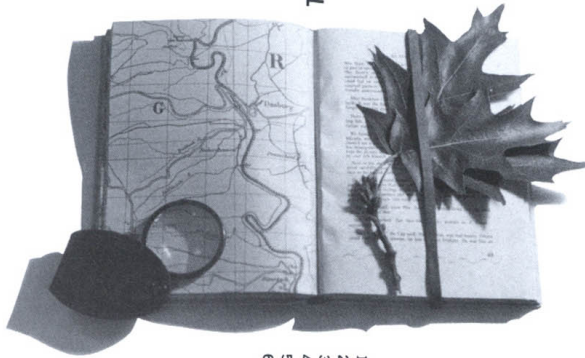
# TITANIUM FAT CHANCE

with XTR/Synchros/Nuke Proof/Gravity Research group and The Big One Inch





## THE IMBA RULES OF THE TRAIL



1. Ride on open trails only.
2. Leave no trace.
3. Control your bicycle.
4. Always yield trail.
5. Never spook animals.
6. Plan ahead.



Kandy Wild Cherry



1



2

Metallic Teal



3

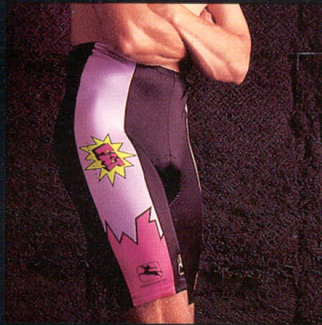


4

Black



5



6



7



8



9

Leslie's Purple



10



11

- 1. Yo Eddy! Reflecto Ankle Bands - Guaranteed Forever
- 2. Small and Large Water Bottles
- 3. Yo! Gloves with Sticky Dots
- 4. Yo Eddy! Polarfleece Ear Bands
- 5. Yo Eddy! Grease System
- 6. Team Shorts
- 7. Cycling Caps
- 8. Team Jersey
- 9. Wicked and Made in America T-shirts
- 10. Team Fat Chance T-shirt
- 11. Don't Tread on Me and Monster Fat T-shirts



**Richard's Ultimate Bicycle Book** (Great Britain) 1992  
"Racing mountain bikes are built for speed and, of course, to survive rough handling....The Fat Chance Yo Eddy is a racing bike that is a tribute to the art of steel-frame making. The frame is TIG (tungsten inert gas) welded — a process where the tubes are actually fused together. The tubing is made from chrome-molybdenum, a steel alloy."

**Mountain Bike** (USA) March 1991  
"Boy can I pick a winner. I rode the Yo on the Slickrock Trail, careened from boulder to boulder on the death defying Portland Trail, cruised across uncharacteristically firm sand and skirted a few mud puddles left from a recent deluge, climbed the broken slickrock steps to the Porcupine Rim for a breathtaking view of Castle Valley, bounced down through Pucker Pass, and even time trialed on pavement across Potash Road. During all that, the Yo earned the highest compliment I can bestow on a bike: It did what I asked without drawing attention to itself (except when I'd glance down at the loud neon green-and-pink team paint job)....The laid-back seat angle and long 23-inch top tube put the rider in a powerful seated climbing position and made it easy to shift weight back for harrowing descents....To maximize (tire) clearance, Fat City also uses asymmetrical chainstays: the right one bends twice to clear the tire while the left has a single curve....This subtle difference (the fork's 1.5 inches of rake) increases the bikes slow-speed agility... It also produces exceptional high-speed steadiness."

**Bike** (Germany) September 1991  
"Das Fat Chance Yo Eddy ist eines der besten Bikes, das wir bisher im Test hatten. Die Sitzposition ist optimal für den Rennersatz geeignet."

**Bicycle Guide** (USA) August 1989  
"The Monster's frame is first-rate on all counts — weight, durability, geometry and construction quality. Everything from inspection of the frame and fork tubing (to make sure it adheres exactly to Fat City's specs) to the spot-on manual alignment of the finished frame reflects a quality control that borders on perfectionist....Whatever the terrain, the bike is consummately capable. The Monster is superbly balanced from front to rear....It delivers astonishing performance and possesses redoubtable durability, two traits that you don't normally run across in any price range."

**Mountain Bike Action** (USA) October 1990  
"The Yo Eddy! defines a new parameter for what's good. By itself, the frame weighs 4 lbs, 5 oz, and the fork weighs 1 lb 12 oz. The Yo Eddy! is meant to accommodate a more aggressive riding style than the Wicked....Like every Fat Chance we've tested before, the handling was on the dreamy side. With the strength of oversize tubes and a weight of 26 pounds, the Yo Eddy! is riding on hallowed grounds nearing perfection. As if the ride weren't good enough, the Yo Eddy! is cool just on looks alone. Fat Chance has always stood for something out of the mainstream; that's one of the things that makes them so attractive....The Yo Eddy! Team Fat Chance is for anyone who has both a serious side and a humorous one. The magic of riding the Yo Eddy! is realized when both sides meet out on the trail."

**Triathlon Today** (USA) September 1992  
"The Slim Chance glides over the flats like a sports car, even when you are down on the aero bars. And I stand by my original assessment: this is the BEST descending bike I have yet to ride."

**The New York Times** (USA) April 1991  
"When other American industries have been overtaken by foreign competition, bicyclists the world over now look to American companies like...Fat City...for technical innovation and cachet."

**Mountain Biking UK** (Great Britain) October 1989  
"At MBIUK we don't just have one reviewer out in the sticks on his own, we have loads! Everyone who threw a leg over the Team Comp was ecstatic when they (eventually) returned. Whether it was the perfect reach, superb handling, incredible light weight, awesome climbing and descending or nice graphics everyone loved the Fat Chance. That's why Tomac used to race one, and not many people know that!...If there's a better steel bike available, I'll eat my shorts!"

**Mountain Bike** (USA) May 1991  
"In the finishing department, I find Chance giving a brazing lesson to Lloyd. The brazing torch looks out of place in his hands, but his movements are deft, revealing a craftsman who's been practicing a long, long time. From the amount of time he spends with Lloyd, it's obvious quality is a high priority."







**Boston Sunday Globe Magazine** (USA) August 30, 1992  
"Chris Chance's peers in the industry recently recognized him as one of the pioneers of the sport of mountain biking, citing Fat City Cycles as 'one of the uncompromising, quality oriented American builders whose products still set standards worldwide.'...Chance is asked about the future of Fat City. (He says) 'A couple of years ago our mission was to build the best bike available in America. Now we want to build the best bike in the world.'"

**Bike** (Germany) September 1992  
"Bereits ein Klassiker: Die Yo Eddy-Gabel ist extrem leicht, aber gleichzeitig stabil."

**Bicycle Guide** (USA) June 1985  
"The Chance is a real climber. I found it was possible to climb grades in the snow that were impossible on dry dirt with my Bay Area Bomber. This is one area where equipment does make a difference in performance."

**Bicycle Guide** (USA) Summer 1991 (letter to the editor)  
"I read the (competitor's model) road test (May) with great interest. This is indeed the lightest bike you may have tested, but why? Not because of the frame, which is unquestionably light, but because of the well-thought-out component selection. The frame weighs 3 lbs, 13 oz: as you put it, 'titanium territory.' In weight it's close, but in strength, no way. And if steel is your only desire, consider Fat City's Slim Chance (February), whose frame and fork weigh exactly one-half ounce less than (competitor's model). Fat City's bike also has proven durability, is hand-made in America and costs \$75 less. Imagine the Slim with the (competitor's model's) parts: now that would be wicked. Wicked Slim Chance, ha, ha."

**Gentlemen's Quarterly** (USA) May 1991  
"Zapata Espinoza, editor of Mountain Bike Action magazine, believes that Chance makes 'consistently one of the best frames on the market. A lot of guys who got into manufacturing mountain bikes looked at it like something else to sell. But Chris Chance is a bike guy'....Fat City's frames are individually mitered and hand welded. There are, in fact, a hundred little details, such as silver-brazed brake-cable guides, frame alignment accurate to one thousandth of an inch and gusseting at the juncture of the down tube and the head tube and of the seat stays and the seat tube....which may sound like Greek but translates into art."

**Schweizer Bike Magazin** (Switzerland) December 1991  
"Die 20 besten Produkte 1991....Fat Chance Yo Eddy-Rahmen....Heisse Geometrie, wenig Gewicht, radikale Fahreigenschaften. Der Yo Eddy-Rahmen ist, wie Bike Magazin im Test bereits geschrieben hat, 'anders als alle anderen.' Nun ist er auch von Bike-Clubs und Anbietern unter die besten 20 des Jahres katapultiert worden. Wen wundert's, angesichts der bevorstehenden Stahl-Renaissance."

**Bicycle Guide** (USA) February 1991  
"The Slim's welded joints show off a production quality that is minimalist, accomplished, and, on the box-crown fork, unique....If the Slim Chance has a lesson, it is a confirmation of the relativity between road and mountain bikes....Our 56 cm Slim weighs three pounds, 15 ounces, earning it a solid spot on the roster of lightweight contenders. More to the point, it is one of the lightest steel frames ever to float into these pages, regardless of size. A light frame has a virtue all its own, especially since it is the foundation of a light bike....Riding the Slim can bring an inescapable feeling that this is how a steel bike is supposed to respond. It is, in a word, smooth....When Fat City gets its hands on a well-engineered steel tubeset, the in-house signatures — judicious machining, flawless welding and finishing, and strict alignment — elevate the product from a nice steel bike to a nice light steel bike, and even to one of the nicest bikes anywhere....The Slim is the first bike we've sampled with Columbus TSX. TSX updates the internal reinforcing Columbus first used on its SLX tubeset. TSX expands upon SLX's 'hexical reinforcement' (splines drawn into certain tube ends) by running the spirals the entire length of the top and down tubes. This is supposed to make the frame stiffer."

**Bicycle Guide** (USA) June 1990  
"For those of you who wonder about the etymological origins of the Wicked Fat Chance, 'wicked' is a descriptive word known to every New England teen. It's an adjective, sort of a variation of 'awesome,' as well as 'extremely,' and that means there are those rare situations that can be fairly described by the inimitable phrase 'wicked wicked.'....The Wicked is almost beyond comparison. In addition to being one of the lightest and strongest steel bikes in the world, the Wicked rides right."

By now, you're probably asking yourself,

## "Who are these Fat City people, and why should I ride one of their bikes, anyway?"

Well, there are 32 of us here at our shop in Somerville, Massachusetts. And we all share a common mission: **to produce the finest bicycles human hands can build, to back them with the best possible customer service, and to temper our enthusiasm for our sport with a genuine respect for the planet.**

Now as you can imagine, because of our size, we're not extremely prolific. In fact, some of our bigger competitors probably turn out more bikes in a week than we do in a year. Which is fine with us. We'll take quality over quantity any day. The important thing is, we like what we do. We enjoy working together. And it shows in our bikes.

The truth is, this piece isn't designed to "sell" you (we'll leave that to the politicians and the corporate giants, thank you). Instead, it's designed to take you on a bit of a journey. So thanks for coming along for the ride. And we hope to meet you on the trails.

### YOUR DAILY DOSE OF IRON

The chrome-moly we use is very high quality with an extremely low sulphur and phosphorous content. Chrome-moly — short for chromium-molybdenum steel — is an iron/iron carbide mixture (that's what steel is) with chromium and molybdenum used as the major alloying elements. It is often referred to by its SAE-AISI\* number: 4130, with "41" standing for the major alloying elements and "30" standing for the carbon content (which is about .30% — not a lot). About 1% of 4130 is chromium and about .25% is molybdenum.

The sulphur and phosphorous present are from the steel-making operation and are considered welding contaminants. High quality chrome-moly will have less than .025% of each of these elements (notice the "0" to the right of the decimal point). The raw 4130 that True Temper buys is even lower than the acceptable standards for sulphur and phosphorous. The steel is extremely clean and consistent in its metallurgical structure. That's why we've selected True Temper to custom draw our chrome-moly mountain bike tubesets.

\*Technology should improve our quality of life, not complicate it at the expense of future generations."

BOB FULK

Speaking of tubesets, do you know how we design them? We start by defining our high standards of ride quality, weight, ultimate and fatigue strengths. Then, we examine the different joint configurations and how they take stress. We build frames and forks, some to ride and some to destroy. We see how they ride and how and why they fail the way they do. We develop gusset designs. We look at heat treatment. We look at all the bikes out there and see how well they hold up and talk with their owners to get a clear understanding of their assessment of the bike's performance. Then, we take all that we've learned through experience and testing and further refine the specs for each frame.

Basically, all of the variables are considered: tube diameter, butt lengths and wall thicknesses, heat treatment, frame size to stiffness ratio and anything else our experience has taught us.

"We are an organism made up of humans who pedal, grind, trash, design, talk, weld, paint, sand, bend, align, torch, blast, braze, challenge, cut, mitre, sell and stand behind the best handbuilt bicycles ever made by human hands."

GEORGE REYNOLDS

### A BALANCED VIEW OF LIFE

Life is complicated. There are health issues, political issues — both domestic and international — and credibility issues. Obviously, we can't solve all of these problems.

What we can do is provide an alternative to the indoor scene. After all, to be healthy means to be active. To breathe fresh air. To stretch. To get up off the couch and test our limits; the limits of skill, as well as power. It's our responsibility to set the example. To practice what we preach and use our muscles — mental and physical — both on the road and off.

"I believe that nothing says more for our bikes than taking one for a ride — you can really feel the difference that our relentless pursuit of perfection makes. Nothing leaves the finishing department before it goes through a rigorous series of quality checks."

RICK PAGE



"The world is out of control. Too many people are trying to make that quick buck and they're shortening the earth's lifespan in the process. I'm interested in living a life that doesn't over-consume. And I'm doing that by buying quality things that last, and by supporting businesses that protect the environment as well."

CHRISTIE LAWYER

## FLASH vs. PERFORMANCE

We've got an international challenge on our hands. The US has been struggling its way out of a recession. Why? Because as consumers, we've put too much emphasis on flash and not enough on performance. In order to compete, our products must perform, and our employees must feel valued. The system is only as strong as its weakest link, so it's time to focus on working smart. And doing what we can to disturb the ecological balance as little as possible.

And lastly, there's the credibility issue. The bigger you are, the smarter you are, right? Wrong. Just because you recognize that a niche exists doesn't mean the products you bring to market have merit.

"Any company, be it large or small, should be just as concerned about efficiency, industrial waste, employee enlightenment, and community improvement as they are about the end product."

REGGIE JACKSON

Some people have the design and framebuilding experience to merit being called bicycle framebuilders. Like Ugo DeRosa, for one. And Chris Chance, for another. Both have the proven experience of designing hundreds of successful frame geometries that have been ridden to victory. Whether the victory was a personal best or a race proven challenge. The point is to get real. And to be able to recognize when it's just a lot of talk.

"Quality and integrity of manufacture are key. I'm here to help Fat City set the standard for impeccable customer service and to ensure that we'll be around for customers who haven't yet heard about our bikes."

WENDYLL BEHREND

## CHOOSE TO CHALLENGE

It's our responsibility to design and build the framesets that can help you challenge your personal best. And help you do your fastest commute. Or the gnarliest single track without dabbing. The opportunity is here. Now it's up to you to test the ride quality.

"Bicyclists have long been aware of the innate role and contribution cycling, which by nature is poetry in motion, has in making the earth a cleaner and healthier place to be. And ultimately, it will be the planet which will hopefully unite us and help us understand the true commonality of our needs."

DEBBIE MADOLNEY

## WARRANTY

We've designed our products to perform within a broad range of applications, and we're proud to stand behind them for the duration of original ownership. We'll repair or replace your frame or fork at our own discretion. Sometimes for free and sometimes we'll ask you to chip in. And when your bike is returned to you, it'll look brand new. With new decals and fresh paint in one of our stock colors. Our customers hold onto their bikes. They grow with them and travel the world together. At some point—maybe already—you'll meet one on the trail. Go ahead, ask that person which bike they'd recommend. Welcome to Fat City.

# Fat City Cycles. The One. The Only.





**FAT**  
CITY CYCLES®

P.O. Box 218  
Somerville, MA 02143 USA  
Tel: 617 625 4922  
Fax: 617 625 4938