

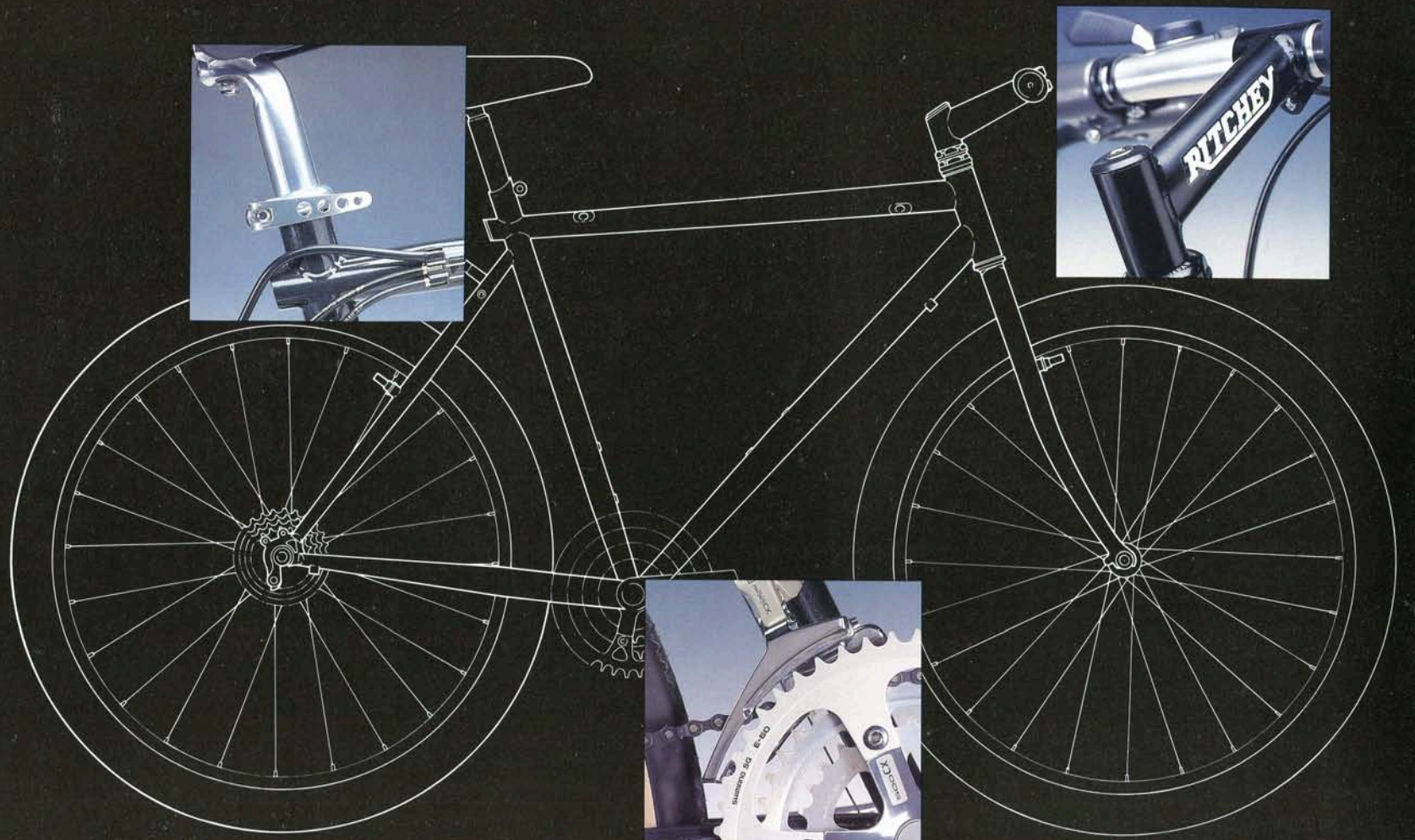
# SARACEN

HANDBUILT IN ENGLAND



HAND BUILT  
IN ENGLAND

1992



# SARACEN

HANDBUILT IN ENGLAND

## THE PURSUIT OF EXCELLENCE

Since the sport was first invented and the mountain biking boom began, Saracen has consistently exceeded the expectations of successive generations of recreational and competition riders.

Even by these exacting standards, 1992 is set to be an outstanding year. Our mountain bikes have always been race-proven but now, for the first time, we'll be sponsoring our own team of four, top-flight professionals to compete in national mountain bike events. Make no mistake, we're not entering to make up the numbers. **We've produced a range of bikes so supremely light and strong they belong in the fray.**

By the end of the season, the sight of a

triumphant Saracen team overcoming the most gruelling conditions with consummate ease is certain to be a familiar one. Conquering the elements is a tradition at Saracen. **Ever since the old altitude record for cycling was shattered on Kilimanjaro using a Saracen, we've been scaling new heights.** Epic journeys across some of the most hostile terrain on earth, such as the Sahara Desert, the Peruvian Andes and Arctic Glaciers have provided both a test of character for our riders and the most rigorous trials imaginable for our machines.

Challenges like these are the acid test for a mountain bike and the lessons we learn on long distance endurance trips or on the race

circuit - as well as through a regular dialogue with our development riders, experts and customers - give us an invaluable, professional insight into designing mountain bikes equipped to perform heroics anywhere.

Since the choice of most riders is ultimately determined by budget, **the new range also represents exceptional value-for-money**, at every price level, making us as competitive on price as we are on the trail

Mountain bikes are our life. We make nothing but. And never has the success of this total dedication to the concept and principles of the sport been more apparent than in 1992.

## NEW INNOVATIONS FOR 1992

Mountain bike technology is in a constant state of innovation and development and, in 1992 Saracen's new lighter, stronger range has incorporated such state-of-the-art features as:

- \* The arrival of a new line of components created by mountain bike guru Tom Ritchey, including Bar's, Stem's, Head Sets, Rims and Tyres is our single, most significant innovation in 1992. The far lighter, stronger designs, many of which are produced to the most stringent world championship series standard, substantially improve every aspect of riding and handling performance.

- \* Strong, lightweight alloy competition bar ends are now fitted as standard on all off-road competition bikes.

- \* True Temper AVR lightweight elliptical profile frames and True Temper OX Ultra II heat treated lightweight Cromoly frames, which are manufactured using the ultimate in lightweight, heat treated thin wall American made tubing, are new this year.

- \* All bikes fitted with True Temper frames come complete with a new investment cast lightweight rear dropout and feature a 73mm bottom bracket and tubular chainstays and seatstays for improved mud clearance.

- \* Re-introduction of Shimano Deore DX Top shifters which have been upgraded for more positive, precise and user-friendly gear shifting.

- \* The new Shimano cartridge Bottom Bracket set is sealed for life and maintenance-free.

- \* Also new from Shimano for 1992 is the top-of-the-line 24 speed XTR Group Set. A new standard of light-weight, strength and dependability in off road components.

- \* Our Hybrid bikes feature a new gear shifting system with twist-grip gear control for maximum convenience on tarmac, plus Avocet Cross Tyres with an inverted tread pattern for a smooth ride and low rolling resistance in town, but sufficient grip for recreational off-road use.

- \* Stronger, lighter zoom lite Stem and lite alloy bars have been introduced on the Tuffrax and Traverse offroad sport models.

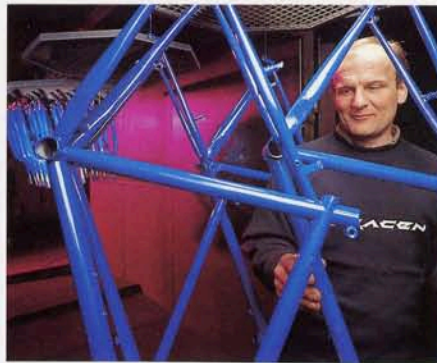
- \* The 1992 version of the exceptionally advanced Magura Hydraulic braking system is in evidence on four of our off-road competition bikes.

- \* Factory-fitted Rox Shox II suspension forks with indexed adjustment and factory-supplied Shimano Clipless pedals are available as options.





Hand-finishing of the frame - from fitting a full complement of neat braze-ons to finishing the frame ready for painting - is typical of the attention to detail we lavish on our bikes before they leave the factory.



The final inspection of Saracen's famous resilient polyester powder coat, which is electrostatically applied over a chromate rust proofing primer and baked at a 180 C to guard against damage and provide a durable knock-resistant finish that doesn't flake if scratched.



The mechanic responsible for the bike's progress, from start to finish, double-checks the hand-finishing before the frame number and builder's name are stamped on the quality assurance cards which accompany every bike Saracen produce.

## THE LIGHTER, STRONGER SARACENS FOR 1992

*Cycle material technology is evolving at a spectacular pace. Ideas that weren't even dreamed of a few years ago are now commonplace and many of the best components ever built have long since been adopted by Saracen.*

*Even so, we're not resting on our laurels. The worldwide search for new innovations to refine and perfect our machines continues unabated. For 1992, we've taken the pick of the lighter, stronger components from the sport's leading manufacturers - such as Tange, Ritchey, Shimano and True Temper - to produce a range of thoroughbred mountain bikes with a strength to weight ratio phenomenally better than last year.*

*The difference in performance between the old, cumbersome recreational heavyweights and our new, more competitive lightweight designs is devastating. Just being on the trail on a bike that is resilient and responsive, but is also so streamlined and astonishingly light is an exhilarating riding experience. As anyone who has off-road tested a 1992 Saracen will testify.*

*Always at the leading edge of development, we are the very first people to use this unique composition of components and our latest refinements reflect an ongoing commitment to producing a range of mountain bikes manufactured to uncompromising standards.*

**Saracen. Engineered for performance.**

## GLOSSARY OF TERMS

Some of you may be unfamiliar with the mountain bike terminology found in our brochure, especially in the more detailed, individual descriptions of the Saracen range. In order to help you understand the information and select a bike that will maximise your enjoyment of the sport, we have produced the following glossary of terms.

**SHIMANO:** The cycle industry's leading manufacturer of moving component parts. **TANGE:** Japan's leading manufacturer of cycle tubing. **RITCHEY:** America's leading innovative designer and producer of light weight performance componentry. **TRUE TEMPER:** America's leading manufacturer of cycle tubing specialising in heat treated and lightweight tubing. **MAGURA:** Europe's foremost producer of hydraulic braking systems for motorbikes and cycles. **ROCKSHOX:** America's brand leader for front suspension systems. **CAMPAGNOLO:** The Italian company whose components have more Tour de France victories than any other have now turned their attention to the mountain bike market. **OVERSIZED FRAME TUBING:** Bigger diameter tubes with decreased wall thickness, combines strength with lightweight. **CROMOLY:** A mixture of expensive additives chrome and molybdenum which when combined with steel considerably increases its strength to weight ratio. **DOUBLE BUTTED:** A means of lightening the tube by reducing wall thickness in the centre of the tube without reducing strength. **ELLIPTICAL PROFILE TUBING:** Ovalising the tube at both ends enabling a greater contact area at major stress points. **QUAD PROFILE TUBING:** A new shape in aluminium tubing, borrowed from motor bike technology. **ELEVATED CHAINSTAY:** Elevating the chainstays enables a shorter triangle for competition use resulting in greater mud clearance and increased rear wheel traction. **HEAT TREATED:** A process of heating and quenching steel which improves the molecular structure enabling a thin wall tube to be both lighter and stronger. **TOP SHIFTERS:** S.I.S gear shifting on top of the handlebars giving quick and precise gear changes. **GRIP SHIFTERS:** A twist action gear shift mechanism allowing both hands to remain on the hand grips, ideal for hybrid bicycles and urban situations. **GROUP SET:** Co-ordinated gear, chainset and braking system by the same manufacturer. **W.C.S:** World Champion Series components by Ritchey designed for ultimate lightweight competition performance. **KEVLAR:** A synthetic material with the strength properties of steel but without its weight, developed for NASA's Space Programme, used on cycle tyre wall beads which reduce weight and enables the tyre to be folded.

## OFF ROAD SPORTS RANGE

A range of six, super bikes designed for serious but budget-conscious riders. Competitive specifications and retail price make them real value-for-money, with plenty to offer for both the recent convert and the experienced mountain biker.

### OUTSTANDING FEATURES

Shimano 500 LX/200 GS group set  
Tange cromoly double butted frame  
Oversize 1.125" Tioga headset  
Shimano cartridge B.B. set  
Saracens famous tough polyester powder coat finish  
Hand Built Quality  
Tioga Wonder Dawg tyres  
Hand built 36 x 14G rustless spoked wheels

### RIDER BENEFITS

Good quality Shimano componentry for Off Road use  
Lightness and rigidity at a competitive price  
Strengthened main stress area and smooth steering  
Sealed for life, maintenance free  
Extremely durable knock resistant finish that doesn't flake if scratched  
Ensures perfect componentry set up, double checked before leaving the factory, resulting in the lowest warranty claims in the industry  
Branded quality tyres at a competitive price  
Built tighter and stronger than machine built wheels, resulting in increased rider performance

# SAHARA

The best entry-level bike around. Shimano componentry, using the 200 GS Group Set, Tange cromoly double butted frame and hand-built rustless spoked wheels combine to give you a machine perfect for recreational and sport use. The ideal introduction, offering a taste of mountain biking at a realistic price.

*"A tidy package with the named components and lighter parts giving it a quality feel that can be missing on budget bikes."*  
Mountain Biker, April 1992



# SAH

# SAHARA

## ELITE

The full oversize frame in Tange cromoly double butted frame tubing combined with upgraded Shimano Deore DX top shifters, which put the gear shifters right where you need them, and the Shimano Deore DX 2 finger brake levers for smooth, reliable, powerful braking will appeal to the rider who's looking for a better-than-average entry-level machine.



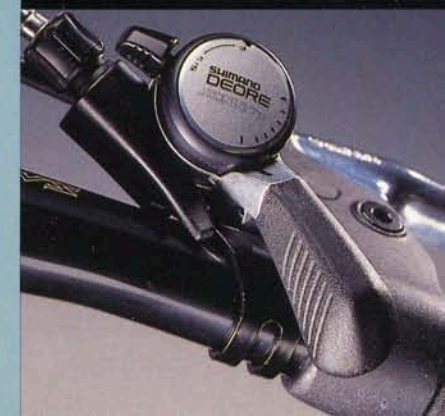
### OUTSTANDING FEATURES

Shimano Deore DX/300 LX group set  
Full oversize Tange cromoly double butted frame  
Shimano Deore DX top shifters  
Shimano Deore DX 2 finger brake levers  
Shimano cartridge B.B. set  
Comfort system gel saddle  
Saracens famous tough polyester powder coat finish  
Hand Built Quality  
Tioga Wonder Dawg tyres  
Hand built 36 x 14G rustless spoked wheels

### RIDER BENEFITS

Good quality Shimano componentry for Off Road use  
High strength combined with Lightness and rigidity  
Upgraded positive and precise gear shifting, with friction option  
Precise braking control  
Sealed for life, maintenance free  
Excellent rider comfort  
Extremely durable knock resistant finish that doesn't flake if scratched  
Ensures perfect componentry set up, double checked before leaving the factory, resulting in the lowest warranty claims in the Industry  
Branded quality tyres at a competitive price  
Built tighter and longer than machine built wheels, resulting in increased rider performance

Shimano Deore DX Top Shifters





Zoom Lite Stem

**OUTSTANDING FEATURES RIDER BENEFITS**

Shimano Deore DX/400 LX group set	Good quality Shimano componentry for Off Road use
Full oversize Tange cromoly elliptical profile double butted frame	High strength combined with lightness and increased rigidity at tube joints
Shimano Deore DX top shifters	Upgraded positive and precise gear shifting, with friction option
Shimano Deore DX 2 finger brake levers	Precise braking control
Shimano cartridge B.B. set	Sealed for life - maintenance free
Zoom lite stem with lite alloy bars	Maximum strength with minimum weight (515 grams)
Ritchey Vantage sport rims	Leightweight performance rim with twin side cavities for extra rigidity (495 grams)
Ritchey Megabite hard drive tyres	Performance tyre with new 2.1" width for better traction (630 grams)
Comfort system leather gel saddle	Excellent rider comfort
Saracens famous tough polyester powder coat finish	Extremely durable knock resistant finish that doesn't flake if scratched
Hand Built Quality	Ensures perfect componentry setup, double checked before leaving the factory, resulting in the lowest warranty claims in the Industry
Hand built 36 x 14G stainless steel spoked wheels	Built tighter and stronger than machine built wheels, resulting in increased rider performance

# TUFFTRAX

The bike that has left countless imitators following in its tyre tracks. 1992's strict 'back-to-basics' policy shows significant savings in weight, across the componentry. Full oversize Tange cromoly elliptical profile and double butted frame tubing as well as Zoom lite stem with lite alloy bars and Ritchey Vantage sport rims all add strength, but not weight. Ritchey megabite hard drive tyres with 2.1" width for superb climbing traction round off a bike that shares the riding characteristics of more expensive models.





# TUFFTRAX ELITE

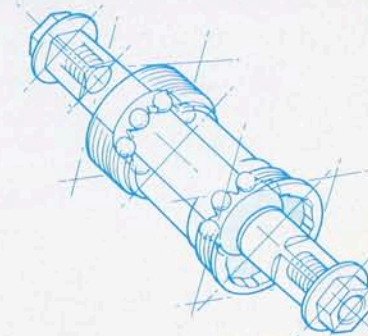
Shares the Zoom lite stem and lite alloy bars, Ritchey Vantage sport rims and megabite hard drive tyres in common with the Tufftrax. The Tange elliptical frame takes most of the credit for this bike's impressive strength to weight ratio, extra rigidity and reinforcing at major stress points. Upgraded Shimano Deore LX/DX Group Set is also lighter, wears longer and delivers the performance power to defy the elements, the terrain and even gravity.

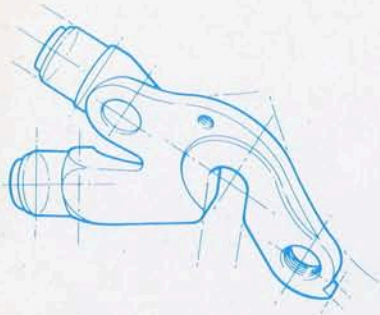


Shimano's New Cartridge Bottom Bracket Set

## OUTSTANDING FEATURES RIDER BENEFITS

Shimano Deore DX/Deore LX group set	Good quality Deore componentry for Off Road use
Full oversize Tange cromoly elliptical profile double butted frame	High strength combined with lightness and increased rigidity at tube joints
Shimano Deore DX top shifters	Upgraded positive and precise gear shifting, with friction option
Shimano Deore DX 2 finger brake levers	Precise braking control
Shimano Deore DX cartridge B.B. set	Sealed for life - maintenance free
Zoom lite stem with lite alloy bars	Maximum strength with minimum weight (515 grams)
Ritchey Vantage sport rims	Lightweight performance rim with twin side cavities for extra rigidity (495 grams)
Ritchey Megabite hard drive tyres	Performance tyre with new 2.1" width for better traction (630 grams)
Comfort system leather gel saddle	Excellent rider comfort
Saracens famous tough polyester powder coat finish	Extremely durable knock resistant finish that doesn't flake if scratched
Hand Built Quality	Ensures perfect componentry setup, double checked before leaving the factory, resulting in the lowest warranty claims in the Industry
Hand built 36 x 14G stainless steel spoked wheels	Built tighter and stronger than machine built wheels, resulting in increased rider performance





New Investment Cast Lightweight Rear Dropout

#### OUTSTANDING FEATURES RIDER BENEFITS

Full oversize True Temper lightweight elliptical profile double butted frame	Good quality Deore componentry for Off Road use
Shimano Deore DX group set	All the design advantage of the Tufftrax Elite frame, only lighter and more rigid, by the use of the American made True Temper frame tubing
Shimano Deore DX top shifters	Upgraded positive and precise gear shifting, with friction option
Shimano Deore DX 2 finger brake levers	Precise braking control
Shimano Deore DX cartridge B.B. set	Sealed for life - maintenance free
Zoom lite stem with lite alloy bars	Maximum strength with minimum weight (515 grams)
Ritchey vantage expert rims	Lightweight performance rim with a double skinned V cross section for increased rigidity (450 grams)
Ritchey Megabite hard drive Kevlar tyres	Performance tyre with new 2.1" width for better traction, incorporating Kevlar for weight reduction and strength (575 grams)
Comfort system leather gel saddle	Excellent rider comfort
Saracens famous tough polyester powder coat finish	Extremely durable knock resistant finish that doesn't flake if scratched
Hand Built Quality	Ensures perfect componentry setup, double checked before leaving the factory, resulting in the lowest warranty claims in the Industry
Hand built 32 x 14G stainless steel spoked wheels	Built tighter and stronger than machine built wheels, resulting in increased rider performance

## TRAVERSE

A machine built around the exceptionally light American-made, full oversize True Temper AVR elliptical profile double butted frame tubing. Features Ritchey megabite hard drive Kevlar tyres for maximum traction and by incorporating Kevlar, a synthetic material with the strength properties of steel developed for NASA's space programme, reduces tyre weight for significantly improved climbing and thrilling downhill performance.



# TRAVERSE

ELITE

Takes the best of the Traverse and upgrades it, adding a Shimano Deore XT Group Set for those who require extensive off-road use and keep coming back for more. The American-made True Temper frame tubing is light but super strong for maximum rider efficiency. Handsome, sleek and ready to race or ride all day, it soaks up the pressures and inspires confidence.



Elliptical Profile Double Butted Frame

## OUTSTANDING FEATURES RIDER BENEFITS

Shimano Deore XT group set	Excellent quality Deore XT componentry for extensive Off Road use
Full oversize True Temper lightweight elliptical profile double butted frame	All the design advantage of the Tufftrax Elite frame, only lighter and more rigid, by the use of the American made True Temper frame tubing
Shimano Deore XT top shifters	Upgraded positive and precise gear shifting, with friction option
Shimano Deore XT 2 finger brake levers	Precise braking control
Shimano Deore XT cartridge B.B. set	Sealed for life - maintenance free
Zoom lite stem with lite alloy bars	Maximum strength with minimum weight (515 grams)
Ritchey Vantage expert rims	Lightweight performance rim with a double skinned V cross section for increased rigidity (450 grams)
Ritchey Megabite hard drive Kevlar tyres	Performance tyre with new 2.1" width for better traction, incorporating Kevlar for weight reduction and strength (575 grams)
Comfort system leather gel saddle	Excellent rider comfort
Saracens famous tough polyester powder coat finish	Extremely durable knock resistant finish that doesn't flake if scratched
Hand Built Quality	Ensures perfect componentry setup, double checked before leaving the factory, resulting in the lowest warranty claims in the Industry
Hand built 32 x 14G stainless steel spoked wheels	Built tighter and longer than machine built wheels, resulting in increased rider performance



# COMPETITION



Left to right: Steve Douce, Paul Stanforth, Jon Walshaw, Mick Ives, Rick Stanforth, Debbie Thompson.

Throwing down the gauntlet at the major national mountain bike events in 1992 will be Saracen's new team of four top-flight professional riders.

The team blends ambition and experience with Steve Douce, seven-times National Cyclo-Cross Champion, Jon Walshaw, one of the country's leading Road and Track riders and Commonwealth Games Medallist, Debby Thompson winner of the 1991 Ladies Expert Series and Mick Ives, as Rider Manager, winner of 30 Open Mountain Bike Events in 1991 and probably the most experienced Racing Cyclist competing in the UK today. All four team members are World Championship competitors.

It's the aim of the team to be ruthless in the pursuit of top honours. Their participation as serious contenders underlines Saracen's

success in producing an exceptional range of lighter and stronger machines for 1992, as well as our commitment to the development of the sport.

The machines the Saracen professional Team will be riding are standard production models selected from our range of seven off-road bikes, which all come complete with special features for competition use. Upgraded, to save serious bikers having to add componentry themselves, each bike is equipped to the highest specification and needs no extra modification prior to racing.

In this range, options which can be ordered from your dealer include factory-fitted Rockshox II suspension forks with indexed adjustment and factory-supplied Shimano clipless pedals.



# KILI RACER

The looks and attributes of a competition bike, but far more affordable than most in this class. Hardware includes elevated chainstay design frame for better mud clearance and a shorter rear triangle to increase climbing agility and protect against chainsuck and chainbounce. The ski bend bar ends, which allows the rider to use the alternative hand positions essential for speed climbing, and the Ritchey Force lite cromoly stem are only usually found in bikes costing much more.



## OUTSTANDING FEATURES RIDER BENEFITS

Shimano Deore DX/Deore LX group set	Good quality Deore componentry for Competition use
Full oversize Tange cromoly elliptical profile double butted frame	High strength combined with lightness and increased rigidity at tube joints
Elevated chainstay design frame	Increased mud clearance, shorter rear triangle for enhanced climbing, eliminates chain suck and chain bounce
Shimano Deore DX top shifters	Upgraded positive and precise gear shifting, with friction option
Shimano Deore DX 2 finger brake levers	Precise braking control
Shimano Deore DX cartridge B.B. set	Sealed for life - maintenance free
Ritchey Force lite cromoly stem	Strong lightweight competition stem (340 grams)
Ritchey Force lite alloy bars	Strong lightweight competition bars (180 grams)
Ski bend alloy bar ends	Giving alternative hand position especially useful for climbing
Ritchey Vantage competition rims	Lightweight competition rim with double skinned V cross section for increased rigidity (415 grams)
Ritchey Megabite Z-max tyres	Latest Ritchey competition tyres for ultimate Off Road traction (590 grams)
Saracens competition saddle	New lightweight competition saddle
Saracens famous tough polyester powder coat finish	Extremely durable knock resistant finish that doesn't flake if scratched
Hand Built Quality	Ensures perfect componentry setup, double checked before leaving the factory, resulting in the lowest warranty claims in the industry
Hand built 36 x 14 G stainless steel spoked wheels	Built tighter and stronger than machine built wheels, resulting in increased rider performance

Ritchey Force Lite Cromoly Stem





Onza Alloy Bar Ends

## KILI PRO

Built to exacting standards with the inclusion of upgraded components such as a Shimano Deore DX Group Set, Onza alloy bar ends and most significantly, the Magura Hydraulic braking system, which gives you better braking control and increased stopping power available via a lighter, energy-saving finger action. The Killi Pro is recognised as one of the best equipped, value-for-money bikes around.

### OUTSTANDING FEATURES

Shimano Deore DX group set  
 Full oversize True Temper A.V.R. lightweight elliptical profile double butted frame  
 Elevated chainstay design frame  
 Shimano Deore DX top shifters  
 Shimano Deore DX cartridge B.B. set  
 Magura Hydraulic braking system  
 Ritchey Force lite cromoly stem  
 Ritchey Force lite alloy bars  
 Onza alloy bar ends  
 Ritchey Vantage competition rims  
 Ritchey Megabite Z-max tyres  
 Saracens competition saddle  
 Saracens famous tough polyester powder coat finish  
 Hand Built Quality  
 Hand built 32 x 14-16 G double butted stainless steel spoked wheels

### RIDER BENEFITS

Good quality Deore componentry for competition use  
 All the design advantages of the Killi Racer frame, only lighter and more rigid, by the use of the American made True Temper frame tubing  
 Increased mud clearance, shorter rear triangle for enhanced climbing, eliminates chain suck and chain bounce  
 Upgraded positive and precise gear shifting, with friction option  
 Sealed for life - maintenance free  
 Ultimate stopping power with light finger action, resulting in less rider fatigue and increased braking control  
 Strong lightweight competition stem (340 grams)  
 Strong lightweight competition bars (180 grams)  
 Giving alternative hand position especially useful for climbing  
 Lightweight competition rim with a double skinned V cross section for increased rigidity (415 grams)  
 Latest Ritchey competition tyres for ultimate Off Road traction (590 grams)  
 New lightweight competition saddle  
 Extremely durable knock resistant finish that doesn't flake if scratched  
 Ensures perfect componentry setup, double checked before leaving the factory, resulting in the lowest warranty claims in the industry  
 Built tighter and stronger than machine built wheels, resulting in decreased revolving weight and increased rider performance



# KILI FLYER

Few of its rivals are as well established or as well developed. No stranger to competition circles, it's elevated chainstay design improves performance and it comes complete with a full oversize True Temper AVR lightweight elliptical profile double butted frame which is lighter and more rigid than standard designs. For the ultimate in off-road traction in any conditions we've added Ritchey Megabite Z-max WCS Kevlar tyres, the WCS Kevlar version of Ritchey's latest competition tyre. Frequent users will benefit from the quality of the Shimano Deore XT Group Set. Thrives on adrenalin.



## OUTSTANDING FEATURES RIDER BENEFITS

Full oversize True Temper A.V.R. lightweight elliptical profile double butted frame	Excellent quality Deore XT componentry for extensive competition use
Elevated chainstay design frame	All the design advantages of the Kili Racer frame, only lighter and more rigid, by the use of the American made True Temper frame tubing
Shimano Deore XT top shifters	Increased mud clearance, shorter rear triangle for enhanced climbing, eliminates chain suck and chain bounce
Shimano Deore XT cartridge B.B. set	Upgraded positive and precise gear shifting, with friction option
Magura Hydraulic braking system	Sealed for life - maintenance free
Ritchey Force Competition lite cromoly stem	Ultimate stopping power with light finger action, resulting in less rider fatigue and increased braking control
Ritchey Prolite alloy bars	Lightest and strongest competition stem available, constructed from heat treated thin wall cromoly, weighs only 290 grams
Onza alloy bar ends	Lightweight, good shock absorption, durable construction, weighs only 140 grams
Ritchey Vantage Pro W.C.S. rims	Giving alternative hand position especially useful for climbing
Ritchey Megabite Z-max W.C.S. Kevlar tyres	Ultra lightweight competition rim with double skinned V cross section for increased rigidity, weighs only 395 grams
Saracens competition saddle	Lightweight World Champion Series Kevlar version of Ritchey's latest competition tyre for ultimate Off Road traction, weighs only 550 grams
Saracens famous tough polyester powder coat finish	New lightweight competition saddle
Hand Built Quality	Extremely durable, shock resistant finish that doesn't flake if scratched
Hand built 32 x 14-16 G double butted stainless steel spoked wheels	Ensures perfect componentry setup, double checked before leaving the factory, resulting in the lowest warranty claims in the industry
	Built tighter and stronger than machine built wheels, resulting in decreased revolving weight and increased rider performance

Magura Hydraulic Braking System





Tange New Lite Strut Fork

#### OUTSTANDING FEATURES

Shimano Deore XTR group set  
 Full oversize True Temper OX Ultra II heat treated cromoly double butted frame  
 Tange new lite strut fork  
 Elevated chain stay design  
 Shimano XTR cartridge B.B. set  
 Shimano S.P.D. clipless pedal  
 Shimano 8 - speed new trigger shift  
 Ritchey Force competition lite cromoly stem  
 Ritchey Prolite W.C.S. alloy bars  
 Onza alloy bar ends  
 Ritchey Vantage Pro W.C.S. rims  
 Ritchey Force racing K W.C.S. Kevlar tyres  
 Saracens competition titanium saddle  
 Saracens famous tough polyester powder coat finish  
 Hand Built Quality

#### RIDER BENEFITS

Shimano's new for 1992 top of the line component group  
 All the design benefit of the Kili Racer frame, only made with the ultimate lightweight, heat treated, thin wall American made True Temper tubing  
 Lightweight construction. Increased mud clearance  
 Increased mud clearance, shorter rear triangle for enhanced climbing, eliminates chain suck and chain bounce  
 Sealed for life - maintenance free  
 Ultimate solution for positive pedalling action  
 Positive 8 - speed shifting  
 Lightest and strongest competition stem available, constructed from heat treated thin wall cromoly and weighs only 290 grams  
 World Championship Series version, lightweight, good shock absorption, durable butted construction, weighs only 123 grams  
 Giving alternative hand position especially useful for climbing  
 Ultra lightweight competition rim with double skinned V cross section for increased rigidity, weighs only 395 grams  
 World Championship Series Kevlar version making it the Worlds lightest full width M.T.B. tyre at only 465 grams  
 Ultra lightweight competition saddle with titanium rails, weighs only 200 grams  
 Extremely durable knock resistant finish that doesn't flake if scratched  
 Ensures perfect componentry setup, double checked before leaving the factory, resulting in the lowest warranty claims in the Industry  
 Built tighter and stronger than machine built wheels, resulting in decreased revolving weight and increased rider performance

Hand built 32 x 14-16 G double butted stainless steel spoked wheels

## KILI XTR

One of the best equipped bikes on the market. Push it to the limit. Its full size True Temper OX Ultra II cromoly double butted frame is the ultimate in lightweight heat treated, thin wall American-made tubing. Precise front end handling is courtesy of the Tange new lite Strut fork. The Shimano Deore XTR Group Set, new from Shimano for 1992, offers top of the range 24-speed gearing and is included to give the rider more options and greater flexibility. Ritchey Force Racing K. WCS Kevlar tyres, the world's lightest full width MTB tyre, together with Ritchey Vantage Pro WCS rims, the ultra lightweight competition rim. A very lightweight package.





# KILI ULTRA

The ultimate competition bike and top cromoly bike in the range. This is a bike with a mission. The race-proven componentry features the outstanding Campagnolo Record OR Group Set, new for 1992 and a top-of-the-line group set from one of the most famous names in high quality racing component production. A full range of Ritchey WCS components and Saracen ultra lightweight competition titanium saddle, with titanium rails, saves every precious gram resulting in superb acceleration which leaves lesser bikes standing. The best there is, it exceeds the standards of even the top competition riders.

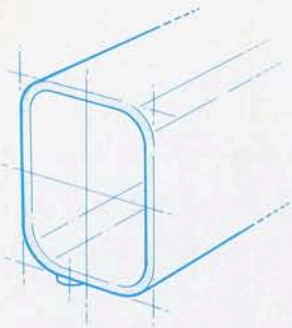


## OUTSTANDING FEATURES RIDER BENEFITS

Full oversize True Temper OX Ultra II heat treated cromoly double butted frame	Campagnolo record O.R. group set	Campagnolo new for 1992 top of the line component group set
Tange new lite strut fork	Elevated chain stay design	Increased mud clearance, shorter rear triangle for enhanced climbing, eliminates chain suck and chain bounce
Campagnolo record cartridge B.B. set	Campagnolo look system clipless pedals	Sealed for life - maintenance free
Campagnolo record 8 - speed new top shifters	Ritchey Force competition lite cromoly stem	Ultimate solution for positive pedalling action
Ritchey Prolite W.C.S. alloy bars	Onza alloy bar ends	Positive and precise gear shifting action
Campagnolo Stheno rims	Ritchey Force racing K W.C.S. Kevlar tyres	Lightest and strongest competition stem available, constructed from heat treated thin wall cromoly, weighs only 290 grams
Saracens famous tough polyester powder coat finish	Hand Built Quality	World Championship Series version, lightweight, good shock absorption, durable butted construction, weighs only 123 grams
Hand built 32 x 14-16 G double butted stainless steel spoked wheels		Giving alternative hand position especially useful for climbing
		Top line Campagnolo double skinned competition rim
		World Champion Series Kevlar version making it the Worlds lightest full width M.T.B. tyre at only 465 grams
		Ultra lightweight competition saddle with titanium rails, weighs only 200 grams
		Extremely durable, shock resistant finish that doesn't flake if scratched
		Ensures perfect componentry setup, double checked before leaving the factory, resulting in the lowest warranty claims in the industry
		Built tighter and stronger than machine built wheels, resulting in decreased revolving weight and increased rider performance

Saracen Competition Titanium Saddle





Aluminium Quad Profile Tubing

#### OUTSTANDING FEATURES RIDER BENEFITS

Shimano Deore DX group set	Good quality Deore componentry for Competition use
Full oversize 7005 series heat treated aluminium quad profile tubing	Quad profile tube construction combined with ultra lightweight, heat treated aluminium, resulting in an extremely stiff lightweight frame
Elevated chainstay design	Increased mud clearance, shorter rear triangle for enhanced climbing, eliminates chain suck and chain bounce
Shimano Deore DX top shifters	Upgraded positive and precise gear shifting, with friction option
Shimano Deore DX cartridge B.B. set	Sealed for life - maintenance free
Magura hydraulic braking system	Ultimate stopping power with light finger action, resulting in less rider fatigue and increased braking control
Ritchey Force competition lite cromoly stem	Lightest and strongest competition stem available, constructed from heat treated thin wall cromoly, weighs only 290 grams
Ritchey Prolite alloy bars	Lightweight, good shock absorption, durable construction, weighs only 140 grams
Onza alloy bar ends	Giving alternative hand position especially useful for climbing
Ritchey Vantage Pro W.C.S. rims	Ultra lightweight competition rim with double skinned V cross section for increased rigidity, weighs only 395 grams
Ritchey Megabite Z-Max W.C.S. Kevlar tyres	Lightweight World Champion Series Kevlar version of Ritcheys latest competition tyre, for ultimate Off Road traction weighs only 550 grams
Saracen competition saddle	New lightweight competition saddle
Saracens famous tough polyester powder coat finish	Extremely durable knock resistant finish that doesn't flake if scratched
Hand Built Quality	Ensures perfect componentry setup, double checked before leaving the factory, resulting in the lowest warranty claims in the industry
Hand built 32 x 14-16 G double butted stainless steel spoked wheels	Built tighter and stronger than machine built wheels, resulting in decreased revolving weight and increased rider performance

## CONQUEST

Alloy construction machines are lighter than their cromoly counterparts. The full oversize 7005 series is a quad profile tube construction combined with ultra lightweight heat treated aluminium, for an extremely stiff lightweight frame. A Magura Hydraulic braking system is incorporated to stop you with authority and the light finger action means fatigue is never a factor. Max Switch Cromoly Super Lite forks complete the details of a bike that is one of the most responsive in its class.



# CONQUEST

## ELITE

Features an upgraded Shimano Deore XT Group Set combined with a full range of Ritchey WCS components, including Vantage Pro WCS ultra lightweight competition rims with double skinned V cross section for increased rigidity and Ritchey Megabite Z-Max WCS Kevlar tyres for incomparable off-road traction, making it a bike that relishes the challenge of off-road riding.



### OUTSTANDING FEATURES RIDER BENEFITS

Shimano Deore XT group set	Excellent quality Deore XT componentry for extensive Competition use
Full oversize 7005 series heat treated aluminium quad profile tubing	Quad profile tube construction combined with ultra lightweight, heat treated aluminium, resulting in an extremely stiff lightweight frame
Elevated chainstay design frame	Increased mud clearance, shorter rear triangle for enhanced climbing, eliminates chain suck and chain bounce
Shimano Deore XT top shifters	Upgraded positive and precise gear shifting, with friction option
Shimano Deore XT cartridge B.B. set	Sealed for life - maintenance free
Magura hydraulic braking system	Ultimate stopping power with light finger action, resulting in less rider fatigue and increased braking control
Ritchey Force competition lite cromoly stem	Lightest and strongest competition stem available, constructed from heat treated thin wall cromoly, weighs only 290 grams
Ritchey Prolite alloy bars	World Championship Series version lightweight, good shock absorption, durable butted construction, weighs only 123 grams
Onza alloy bar ends	Giving alternative hand position especially useful for climbing
Ritchey Vantage Pro W.C.S. rims	Ultra lightweight competition rim with double skinned V cross section for increased rigidity, weighs only 395 grams
Ritchey Megabite Z-Max W.C.S. Kevlar tyres	Lightweight World Champion Series Kevlar version of Ritchey's latest competition tyre, for ultimate Off Road traction weighs only 550 grams
Saracens competition titanium saddle	Ultra lightweight competition saddle with titanium rails, weighs only 200 grams
Saracens famous tough polyester powder coat finish	Extremely durable, shock resistant finish that doesn't flake if scratched
Hand Built Quality	Ensures perfect componentry setup, double checked before leaving the factory, resulting in the lowest warranty claims in the Industry
Hand built 32 x 14-16 G double butted stainless steel spoked wheels	Built tighter and stronger than machine built wheels, resulting in decreased revolving weight and increased rider performance

Max Switch Cromoly Super Lite Forks



## HYBRIDS

*A relatively new breed of versatile transport with all the advantages of a road bike and enough mountain bike pedigree to keep its off-road integrity. Ideal multi-purpose urban machine for those who spend more time on the tarmac commuting than in the mud competing.*

### OUTSTANDING FEATURES RIDER BENEFITS

Shimano new 200 CX group set	New for 1992 good quality components for Hybrid bikes
Wishbone style standard size Tange Infinity cromoly double butted frame	Lightened design Hybrid frame, for more response on road use, but with full Off Road capabilities (clearance for 1.75" Knobbies)
Gripshift new gear shifting system	Refined for 1992, very simple smooth operation ideal for hybrid bikes
Shimano cartridge B.B. set	Sealed for life - maintenance free
Alesa alloy rims	Lightweight and strong rims
Avocet cross tyres	Inverted tread pattern gives a smooth ride, with low rolling resistance on the road, and good grip for recreational Off Road riding
Comfort system gel saddle	Excellent rider comfort
Saracens famous tough polyester powder coat finish	Extremely durable knock resistant finish that doesn't flake if scratched
Hand Built Quality	Ensures perfect componentry setup, double checked before leaving the factory, resulting in the lowest warranty claims in the Industry
Hand built 36 x 14G rustless steel spoked wheels	Built tighter and stronger than machine built wheels, resulting in increased rider performance

## CROSSTRAX

The hybrid for a rider who needs a lightweight, comfortable bike for transport as much as recreation. The Gripshift has been refined for 1992 with a new gear shifting system for simple and smooth operation. Avocet cross tyres with inverted tread patterns offer a smoother ride with low rolling resistance round town and good grip for off-road riding. The wishbone-style Tange Infinity Cromoly frame's narrower tubing reduces weight. Carrier bosses are supplied, front and back, for touring. Allen key seat bolt fitted to meet the greater security demands of urban areas.



# FASTRAX

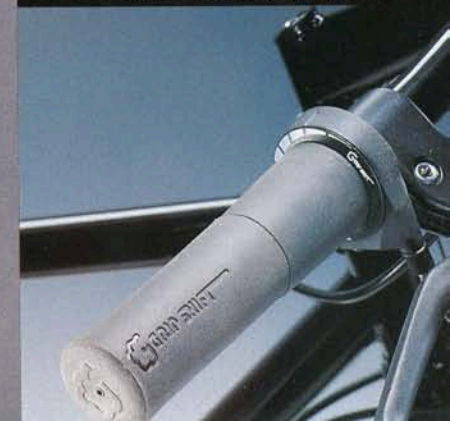
All-purpose practical hybrid designed to excel in all types of cycling. The Shimano 30-40-50 chain set with round rings combined with a Shimano Deore DX 7 speed 12-28 rear wheel cassette offers higher gearing for energy efficient peddling on the road. New for 1992 is the high quality Shimano 500 CX Group Set, developed specifically for Hybrids. All round top quality components unite for a bike that's light and lively but sturdy enough for multi-sport off-road use.



Gripshift - New Gear Shifting System

## OUTSTANDING FEATURES RIDER BENEFITS

Shimano new 500 CX group set	New for 1992 good quality components for Hybrid bikes
Wishbone style standard size Tange Infinity cromoly double butted frame	Lightened design Hybrid frame, for more response on road use, but with full Off Road capabilities (clearance for 1.75" Knobbles)
Gripshift new gear shifting system	Refined for 1992, very simple smooth operation ideal for hybrid bikes
Shimano 30-40-50 chain set with round rings	New higher gearing for on road use
Shimano cartridge B.B. set	Sealed for life - maintenance free
Ritchey Vantage cross rims	Ritchey Vantage Sport rim weighs 450 grams
Avocet cross tyres	Inverted tread pattern gives a smooth ride, with low rolling resistance on the road, and good grip for recreational Off Road riding
Comfort system gel saddle	Excellent rider comfort
Saracens famous tough polyester powder coat finish	Extremely durable knock resistant finish that doesn't flake if scratched
Hand Built Quality	Ensures perfect componentry setup, double checked before leaving the factory, resulting in the lowest warranty claims in the industry
Hand built 36 x 14G rustless steel spoked wheels	Built tighter and stronger than machine built wheels, resulting in increased rider performance



# SPECIFICATION

	MODEL	SAHARA	SAHARA ELITE	TUFFTRAX	TUFFTRAX ELITE	TRAVERSE	TRAVERSE ELITE
	WEIGHT	13.5 Kilo (29.75lbs)	13.5 Kilo (29.75lbs)	13.15 Kilo (28.95lbs)	12.8 Kilo (28.25lbs)	12.25 Kilo (26.95 lbs)	11.9 Kilo (26.25lbs)
	COLOUR	Red or Turquoise	Black	Metallic Blue	Metallic Graphite	Metallic Purple	Metallic Black
	SIZES	14.5" 16" 18" 20" 22"	14.5" 16" 18" 20" 22"	16" 18" 20" 22"	16" 18" 20" 22"	15.5" 17.5" 19.5"	15.5" 17.5" 19.5"
FRAME SET	FRAME	Tange MTB. cromoly double butted main tubes; oversize head tubes (S)	Tange MTB. cromoly double butted oversize frame tubes (S)	Tange MTB. elliptical profile cromoly double butted oversize frame tubes (S)	Tange MTB. elliptical profile cromoly double butted oversize frame tubes (S)	True Temper A.V.R. elliptical profile cromoly double butted oversize frame tubes (S)	True Temper A.V.R. elliptical profile cromoly double butted oversize frame tubes (S)
	FORKS	Max Drive cromoly lite	Max Drive cromoly lite	Max Drive cromoly lite	Max Drive cromoly lite	Super Max Drive cromoly super lite	Super Max Drive cromoly super lite
	HEADSET	Tioga Avenger 1.125" o'size	Tioga Avenger 1.125" o'size	Tioga Avenger 1.125" o'size	Tioga Avenger 1.125" o'size	Ritchey Logic 1.125" o'size	Ritchey Logic 1.125" o'size
	HEAD TUBE ANGLE	71 degrees	71 degrees	71 degrees	71 degrees	71 degrees	71 degrees
	SEAT TUBE ANGLE	74 degrees	74 degrees	74 degrees	74 degrees	74 degrees	74 degrees
	CHAINSTAY LENGTH	435 mm (17")	425 mm (16.73")	425 mm (16.73")	425 mm (16.73")	425 mm (16.73")	425 mm (16.73")
	TOP TUBE LENGTH	550 mm (21.65")	550 mm (21.65")	550 mm (21.65")	550 mm (21.65")	545 mm (21.45")	545 mm (21.45")
	FORK RAKE	45 mm (1.77")	45 mm (1.77")	45 mm (1.77")	45 mm (1.77")	45 mm (1.77")	45 mm (1.77")
	B.B. HEIGHT	285 mm (11.24")	285 mm (11.24")	285 mm (11.24")	285 mm (11.24")	295 mm (11.63")	295 mm (11.63")
	WHEELBASE	1055 mm (41.53")	1046 mm (41.18")	1047 mm (41.22")	1047 mm (41.22")	1050 mm (41.34")	1050 mm (41.34")
DRIVE TRAIN	CHAINSET	Shimano 200 G.S. 28-38-48 B.P.	Shimano 300 LX 28-38-48 B.P.	Shimano 400 LX 28-38-48 B.P.	Shimano Deore LX 24-36-46 round rings	Shimano Deore DX 24-36-46 round rings	Shimano Deore XT 24-36-46 round rings
	B.B. SET	Shimano Exage CS 20 Cartridge	Shimano Exage CS 20 Cartridge	Shimano Exage CS20 cartridge	Shimano Deore DX UN 50 cartridge	Shimano Deore DX UN 50 cartridge	Shimano Deore XT UN 70 cartridge
	CHAIN	Shimano 200 GS	Shimano 300 LX	Shimano 400 LX	Shimano Deore	Shimano Deore DX	Shimano Deore XT
	PEDALS	Shimano Exage	Victor Low Profile with Saracen ATB toe clips & straps	Victor low profile with Saracen ATB toe clips & straps	Victor Low Profile with Saracen ATB toe clips & straps	Victor Lube system (330 grams per pair) with Saracen ATB toe clips & straps	Victor Super Lite (260 grams per pair) with Saracen ATB toe clips & straps
GEAR SYSTEM	F/R DERAILEURS	Shimano 200 GS STI	Shimano 300 LX	Shimano 400 LX	Shimano Deore LX	Shimano Deore DX	Shimano Deore XT
	SHIFT LEVERS	Shimano 200 GS STI Rapidfire	Shimano Deore DX Top Shift	Shimano Deore DX Top Shift	Shimano Deore DX Top Shift	Shimano Deore DX Top Shift	Shimano Deore XT Top Shift
BRAKE SYSTEM	BRAKES	Shimano Exage low profile	Shimano Exage low profile	Shimano Deore low profile	Shimano Deore low profile	Shimano Deore Low Profile	Shimano Deore XT low profile
	LEVERS	Shimano Exage 3 finger	Shimano Deore DX 2 finger	Shimano Deore DX 2 finger	Shimano Deore DX 2 finger	Shimano Deore DX 2 finger	Shimano Deore XT 2 finger
WHEELS	RIMS	Alesa Alloy	Saracen Hard black anodised alloy	Ritchey Vantage Sport (495 grams)	Ritchey Vantage Sport (495 grams)	Ritchey Vantage Expert (450 grams)	Ritchey Vantage Expert (450 grams)
	HUBS	Shimano Exage Quick Release	Shimano Exage quick release	Shimano Exage quick release	Shimano Deore LX quick release	Shimano Deore DX quick release 32 hole	Shimano Deore XT quick release 32 hole
	SPOKES	14G rustless	14G rustless	14G stainless	14G stainless	14G stainless	14G stainless
	CASSETTE	Shimano 500 LX7 7-speed 13-28	Shimano 500 LX 7-speed 13-28	Shimano 500 LX 7-speed 13-28	Shimano Deore DX 7-speed 12-28	Shimano Deore DX 7-speed 12-28	Shimano Deore XT 7-speed 12-28
	TYRES	Tioga Wonder Dawg 26 x 1.95"	Tioga Wonder Dawg 26" x 1.95"	Ritchey Megabite Hard Drive 26 x 2.1" (630 grams)	Ritchey Megabite Hard Drive 26 x 2.1" (630 grams)	Ritchey Megabite Hard Drive Kevlar bead 26 x 2.1" (575 grams)	Ritchey Megabite Hard Drive Kevlar bead 26 x 2.1" (575 grams)
BAR SYSTEM	BARS	Saracen Alloy	Saracen alloy	Saracen lite alloy (250 grams)	Saracen Lite Alloy (250 grams)	Saracen lite alloy (250 grams)	Saracen lite alloy (250 grams)
	STEM	Saracen cromoly	Saracen cromoly with internal cable	Zoom lite cromoly (265 grams)	Zoom lite cromoly (265 grams)	Zoom lite cromoly (265 grams)	Zoom lite cromoly (265 grams)
	GRIPS	Tioga Biogrip	Tioga Biogrip	Tioga Biogrip	Tioga Biogrip	Tioga Biogrip	Tioga Biogrip
SEAT SYSTEM	SADDLE	Saracen Comfort System	Saracen Comfort System Gel	Saracen Comfort System Gel Leather	Saracen Comfort System Gel leather	Saracen Comfort System Gel leather	Saracen Comfort System Gel leather
	SEATPOST	Saracen cromoly micro adjust	Saracen cromoly micro adjust	Saracen alloy super lite micro adjust (260 grams)	Saracen alloy super lite micro adjust (260 grams)	Saracen alloy super lite micro adjust (260 grams)	Saracen alloy super lite micro adjust (260 grams)

Key

- (S) denotes sloping top tube design
- Angles given are those based on a notional straight top tube (17.5/18" size)
- Frame sizes are measured from centre of bottom bracket to centre point of top tube along the seat tube.
- Weight will vary according to size.

KILI RACER	KILI PRO	KILI FLYER	KILI XTR	KILI ULTRA	CONQUEST	CONQUEST ELITE	CROSSTRAX	FASTRAX
13.15 Kilo (28.95lbs)	12.7 Kilo (27.95 lbs)	12.6 Kilo (27.75 lbs)	12 Kilo (26.5 lbs)	11.75 Kilo (25.95 lbs)	12.35 Kilo (27.25lbs)	12.25 Kilo (26.95 lbs)	12.25 Kilo (26.95 lbs)	12.25 Kilo (26.95 lbs)
Red	Metallic Black	Metallic Purple	Titanium	Metallic Green	Metallic Silver	Metallic Graphite	Red	Metallic Black
15.5" 17.5" 19.5"	15.5" 17.5" 19.5"	15.5" 17.5" 19.5"	15.5" 17.5" 19.5"	15.5" 17.5" 19.5"	15.5" 17.5" 19.5"	15.5" 17.5" 19.5"	16" 18" 20" 22"	16" 18" 20" 22"
Tange elliptical profile cromoly double butted oversize frame tubes elevated chainstay design (S)	True Temper AVR elliptical profile cromoly double butted oversize frame tubes elevated chainstay design (S)	True Temper A.V.R. elliptical profile cromoly double butted oversize frame tubes elevated chainstay design (S)	True Temper OX ultra II heat treated Elliptical profile cromoly double butted oversize frame tubes elevated chainstay design (S)	True Temper OX ultra II heat treated Elliptical profile cromoly double butted oversize frame tubes elevated chainstay design (S)	7005 series heat treated aluminium Quad profile tubing elevated chainstay design (S)	7005 series heat treated aluminium Quad profile tubing elevated chainstay design (S)	Wishbone style frame in Tange infinity cromoly tapered double butted frame tubes	Wishbone style frame in Tange infinity cromoly tapered double butted main frame tubes
Max Drive cromoly lite	Super Max Drive cromoly super lite	Super Max Drive cromoly super lite	Max Strut cromoly super lite	Max Strut cromoly super lite	Max Switch cromoly super lite	Max Switch cromoly super lite	Hybrid style cromoly, low rider bosses Shimano Exage 1"	Hybrid style cromoly, low rider bosses Shimano Exage 1"
Ritchey Logic comp 1.125" o'size	Ritchey Logic comp 1.125" o'size	Ritchey Logic comp 1.125" o'size	Shimano XTR 1.125" oversize	Campagnolo Record 1.125" o'size	Ritchey Logic comp 1.125" o'size	Ritchey Logic comp 1.125" o'size	Shimano Exage 1"	Shimano Exage 1"
71 degrees	71 degrees	71 degrees	71 degrees	71 degrees	71 degrees	71 degrees	73 degrees	73 degrees
73 degrees	74 degrees	74 degrees	74 degrees	74 degrees	73 degrees	73 degrees	73 degrees	73 degrees
425 mm (16.73")	419 mm (16.5")	419 mm (16.5")	419 mm (16.5")	419 mm (16.5")	419 mm (16.5")	419 mm (16.5")	425 mm (16.73")	425 mm (16.73")
560 mm (22.05")	545 mm (21.45")	545 mm (21.45")	545 mm (21.45")	545 mm (21.45")	540 mm (21.26")	540 mm (21.26")	565 mm (22.24")	565 mm (22.24")
45 mm (1.77")	45 mm (1.77")	45 mm (1.77")	45 mm (1.77")	45 mm (1.77")	44 mm (1.75")	44 mm (1.75")	45 mm (1.77")	45 mm (1.77")
295 mm (11.63")	295 mm (11.63")	295 mm (11.63")	295 mm (11.63")	295 mm (11.63")	296 mm (11.67")	296 mm (11.67")	286 mm (11.28")	286 mm (11.28")
1050 mm (41.34")	1044 mm (41.1")	1044 mm (41.1")	1044 mm (41.1")	1044 mm (41.1")	1074 mm (42.28")	1074 mm (42.28")	1073 mm (42.24")	1073 mm (42.24")
Shimano Deore LX 24-36-46 round rings	Shimano Deore DX 24-36-46 round rings	Shimano Deore XT 24-36-46 round rings	Shimano XTR 26-36-48 round rings	Campagnolo Record 20-30-42 micro round rings	Shimano Deore DX 24-36-46 round rings	Shimano Deore XT 24-36-46 round rings	Shimano 200 CX 28-38-48 B.P.	Shimano 500 CX 30-40-50 round rings
Shimano Deore DX UN 50 cartridge	Shimano Deore DX UN 50 cartridge	Shimano Deore XT UN 70 cartridge	Shimano XTR UN 90 cartridge	Campagnolo Record cartridge	Shimano Deore DX UN 50 cartridge	Shimano Deore XT UN 70 cartridge	Shimano Exage CS10 cartridge	Shimano Exage CS20 cartridge
Shimano Deore DX	Shimano Deore DX	Shimano Deore XT	Shimano XTR	Campagnolo Record	Shimano Deore DX	Shimano Deore XT	Shimano 200 CX	Shimano 500 CX
Victor Lube system (330 grams per pair) with Saracen ATB toe clips & straps	Victor Super Lite System (260 grams per pair) with Saracen ATB toe clips & straps	Victor Super Lite system (260 grams per pair) with Saracen ATB toe clips & straps	Shimano S.P.D. M737 clipless	Campagnolo Centaur clipless	Victor Super Lite system (260 grams per pair) with Saracen ATB toe clips & straps	Victor Super Lite system (260 grams per pair) with Saracen ATB toe clips & straps	Victor Cross with Saracen hybrid toe clips & straps	Victor low profile with Saracen hybrid toe clips & straps
Shimano Deore LX	Shimano Deore DX	Shimano XT	Shimano XTR	Campagnolo Record	Shimano Deore DX	Shimano Deore XT	Shimano 200 CX	Shimano 500 CX
Shimano Deore DX Top Shift	Shimano Deore DX Top Shift	Shimano XT Top Shift	Shimano XTR Trigger Shift	Campagnolo Record Top Shift	Shimano Deore DX Top Shift	Shimano Deore XT Top Shift	Gripshift	Gripshift
Shimano Deore low profile	Magura hydraulic brakes with quick release	Magura hydraulic brakes with quick release	Shimano XTR low profile	Campagnolo Record	Magura hydraulic brakes with quick release	Magura hydraulic brakes with quick release	Shimano 200 CX low profile	Shimano Deore low profile
Shimano Deore DX 2 finger	Magura hydraulic 2 finger	Magura hydraulic 2 finger	Shimano XTR 2 finger	Campagnolo Record 2 finger	Magura hydraulic 2 finger	Magura hydraulic 2 finger	Shimano Exage 3 finger	Shimano Deore DX 2 finger
Ritchey Vantage comp (415 grams)	Ritchey Vantage comp (415 grams)	Ritchey Vantage Pro W.C.S. (395 grams)	Ritchey Vantage Pro W.C.S. (395 grams)	Campagnolo Stheno	Ritchey Vantage Pro W.C.S. (395 grams)	Ritchey Vantage Pro W.C.S. (395 grams)	Ritchey Vantage Cross Sport (450 grams)	Ritchey Vantage Cross sport (450 grams)
Shimano Deore LX quick release	Shimano Deore DX quick release 32 hole	Shimano Deore XT quick release 32 holes	Shimano XTR quick release 32 hole	Campagnolo Record quick release 32 hole	Shimano Deore DX quick release 32 hole	Shimano Deore XT quick release 32 hole	Shimano Exage quick release	Shimano Exage quick release
14G stainless	14-16G double butted stainless	14-16G double butted stainless	14-16G double butted stainless	14-16G double butted stainless	14-16G double butted stainless	14-16G double butted stainless	14G rustless	14G stainless
Shimano Deore DX 7-speed 12-28	Shimano Deore DX 7-speed 12-28	Shimano Deore DX 7-speed 12-28	Shimano XTR 8-speed 12-28 Super Lite	Campagnolo Record 8-speed 11-23 Close Ratio	Shimano Deore DX 7-speed 12-28	Shimano Deore XT 7-speed 12-28	Shimano Deore DX 7-speed 12-28	Shimano Deore DX 7-speed 12-28
Ritchey Megabite Z-Max 26 x 2.1" (590 grams)	Ritchey Megabite Z-Max 26" x 2.1" (590 grams)	Ritchey Megabite Z-Max W.C.S. Kevlar Bead 26 x 2.1" (550 grams)	Ritchey Force Racing K W.C.S. Kevlar bead 26 x 1.9" (465 grams)	Ritchey Force Racing K W.C.S. Kevlar bead 26 x 1.9" (465 grams)	Ritchey Megabite Z-Max W.C.S. Kevlar bead 26 x 2.1" (550 grams)	Ritchey Megabite Z-Max W.C.S. Kevlar bead 26 x 2.1" (550 grams)	Avocet Cross 26 x 1.5"	Avocet Cross 26 x 1.5"
Ritchey Force lite (180 grams) with lite alloy bar ends	Ritchey Force lite (180 grams) with Onza bar ends	Ritchey Prolite alloy (140 grams) with Onza bar ends	Ritchey Prolite W.C.S. alloy (123 grams) with Onza bar ends	Ritchey Prolite W.C.S. alloy (123 grams) with Onza bar ends	Ritchey Prolite Alloy (140 grams) with Onza bar ends	Ritchey Prolite W.C.S. alloy (123 grams) with Onza bar ends	Saracen lite alloy (250 grams)	Saracen lite alloy (250 grams)
Ritchey Force lite cromoly (340 grams)	Ritchey Force lite Cromoly (340 grams)	Ritchey Force competition lite cromoly (290 grams)	Ritchey Force comp lite cromoly (290 grams)	Ritchey Force Comp lite cromoly (290 grams)	Ritchey Force competition lite cromoly (290 grams)	Ritchey Force comp lite cromoly (290 grams)	Saracen cromoly hybrid	Saracen cromoly hybrid
Grab on	Grab on	Grab on	Grab on	Grab on	Grab on	Grab on	Grip shift	Grip shift
Saracen comp leather	Saracen comp leather	Saracen comp leather	Saracen comp titanium leather (200 grams)	Saracen comp titanium leather (200 grams)	Saracen comp leather	Saracen comp titanium leather (200 grams)	Saracen Comfort System Gel	Saracen Comfort System Gel
Saracen alloy super lite micro adjust (260 grams)	Saracen alloy super lite micro adjust (260 grams)	Saracen alloy super lite micro adjust (260 grams)	Saracen alloy super lite micro adjust (260 g	Campagnolo Icarus super lite micro adjust (260 grams)	Saracen alloy super lite micro adjust (260 grams)	Saracen alloy super lite micro adjust (260 grams)	Saracen micro adjust (260 grams)	Saracen micro adjust (260 grams)

## WARRANTY

Saracen Cycles has an excellent non-return record due to 100% of all our components being assembled in our workshops prior to delivery to the retailer. This permits us to offer you the following comprehensive Warranty:

Saracen Cycles Ltd warrants the replacement of original components of Saracen Mountain Bikes due to defects in material and/or workmanship according to the following conditions and limitations: The frame and fork are warranted for a period of 5 years (In the case of suspension forks, 1 year). The original components, other than the frame and fork, are warranted for a period of 1 year (labour and transportation charges are not included). The warranty is limited to the original retail purchaser only and proof of purchase is required to validate this warranty.

The Warranty does not cover damage or failure due to abuse, neglect, accident, improper assembly, maintenance or commercial hiring, normal wear and tear or installation of parts or accessories not originally intended or incompatible with the bicycle as sold.

Saracen Cycles Ltd shall not be responsible for incidental or consequential damage or loss. The user assumes the risk for any and all personal injury or damage of the bicycle, or other losses if Saracen bicycles are used at any time in any competitive event (including bicycle racing, dirt biking, freestyleing or similar activities or training for such activities).

Claims must be made through an authorised dealer.

Saracen Cycles' policy is one of continuous improvement; therefore specifications may change, without prior notice.

Mountain bikes although tough are not indestructible. Excessively rough use may result in damage to your machine or you - take care and always wear an approved helmet. Optimum riding performance depends on having your bike serviced regularly at your Saracen dealer.

YOUR LOCAL SARACEN DEALER

**RetroBIKE**  
If It's Old School It's In  
Retro, Vintage and Classic Mountain, Road and BMX bikes



Pictured at our Warwickshire headquarters is the 1992 Saracen workforce. From the accounts department to the salesmen, technical staff and mechanics, every member of the entire team has had a significant role in the production of this year's exceptional mountain bike range.

**SARACEN**

Saracen Cycles Limited  
Saracen House  
Harriott Drive  
Heathcote Industrial Estate  
Warwick CV34 6TS England  
Tel (0926) 338427  
Fax (0926) 451428