



SUNTOUR





SUNTOUR



Ever since SUNTOUR began, we have been designing and building bicycle components for the discriminating cyclist. Our commitment to the refinement of componentry for better performance and durability has resulted in some of the most advanced, competition-proven cycling systems in the world. Visualising and producing the toughest, lightest, sleekest bike parts available are standard procedure at SUNTOUR.

SUNTOUR-designed componentry makes a difference. We understand that our components have to function consistently now, and down the road. SUNTOUR engineering means attention to the most minute details. Every SUNTOUR product, from a complete component system down to the individual part, is engineered with one purpose in mind: to be lighter, stronger, to perform better, longer, than anything else in its class.

SUNTOUR quality means long-term performance for today and tomorrow. With creative designs, advanced engineering, and uncompromised durability, SUNTOUR has brought it all together with the exciting new componentry for 1991.

X-PRESS:

SUNTOUR's new, lighter X-Press Shifters were built with one object in mind: putting the rider in complete control. Low-profile, under-bar operation affords complete control of the handlebars and brakes at all times.

X-Press's ergonomic lever locations allow shifts from the thumb's natural position as the hands grip the bar, without compromising steering control. X-Press is lighter than other under-bar shift systems, and

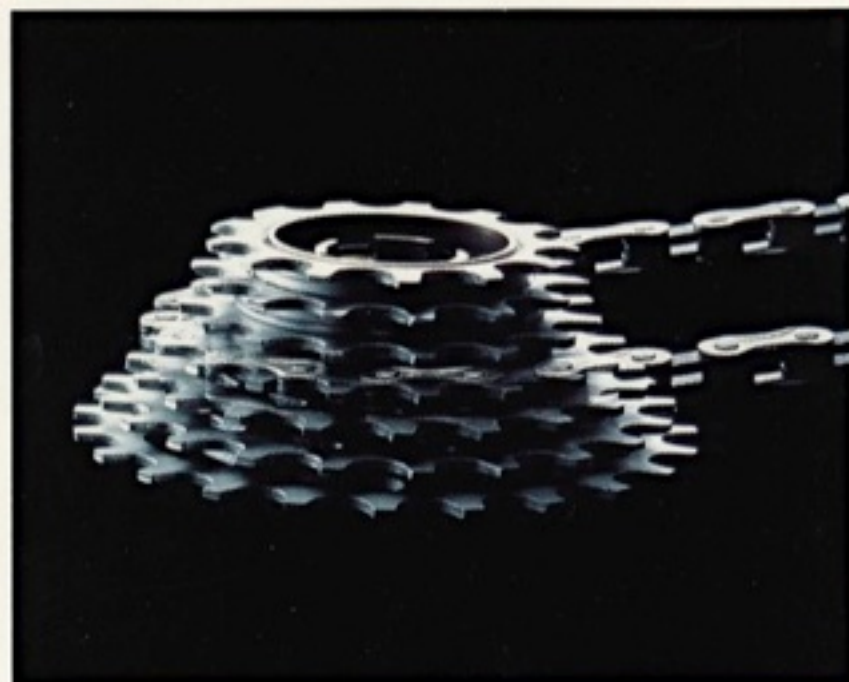
has far fewer parts, making this one of the most dependable systems available.



ACCUSHIFT PLUS COGS AND CHAIN:

SUNTOUR's new AccuShift Plus Cogs and lighter weight AccuShift Plus Chain mean quick, accurate shifts on-demand! By matching the cog tooth profiles and chain plates, AccuShift Plus Cogs and Chains engage positively and quickly, even under power. And since all the teeth are beveled to accommodate solid shifting, performance is a sure thing, all the time.

AccuShift Plus components feature free-wheels or removable freehubs, low-profile chain and complete, in-line compatibility.



GREASE GUARD:

The new WTB/SUNTOUR Grease Guard System lets you overhaul your hubs, bottom bracket, headset and pedals in a matter of seconds. Simply injecting fresh SUNTOUR grease into the convenient injection ports provides superior lubrication to all of a

bikes critical bearing surfaces. At the same time, dirt and impurities are purged out, increasing the life-span of each part. The system includes SUNTOUR Grease and Grease Gun.





SUNTOUR





POWERING:

The SUNTOUR PowerRing chainring drives the AccuShift Plus chain with a redesigned tooth profile on a completely round chainring. PowerRing ensures jam-free shifting; SUNTOUR backs this up with an anti-jam pin standard on all cranks.



COMMAND SHIFTERS:

Road racers can now shift on-the-fly without leaving the grips! Going for the brakes or climbing out of the saddle, precision shifts are within reach with Command Shifters' completely functional, unique design.



ACCUSHIFT PLUS INDEXED SHIFTING:

AccuShift Plus shifters provide the rider with clean, positive shifts from a variety of mounting positions. AccuShift Plus shifters are compatible with AccuShift Plus cogs and AccuShift Plus Chain and PowerRing; light-weight and durable, AccuShift Plus Indexed shifters allow quick shifts under load, on any trail or road.





SUNTOUR





MULTI-MOUNT:

With more performance mountain bikes using narrower handlebars, positioning controls for individual preferences is more difficult. SUNTOUR Multi-Mount lets a rider select a narrower bar for optimal steering control and still position brake and shift controls for fast,

ergonomically correct performance.



SE BRAKES:

Long descents require prolonged braking effort; SUNTOUR Self Energizing Brakes minimize fatigue for the rider by harnessing rim-rotation force to generate additional braking power. A directional-helical mechanism increases pad-pressure without requiring more brake-lever force. The power-boost is so

great these brakes are only available for rear brake systems.



CARTRIDGE BEARINGS:

Standard on XC-Pro and Superbe Pro gruppos, SUNTOUR precision-sealed Cartridge Bearing hubs and derailleur pulleys shut out dirt and water like nothing else. With significantly less rotational resistance under load than any competing system, SUNTOUR Cartridge Bearings are readily main-

tained and durably built.



XC PRO



SUNTOUR XC-Pro is among the most advanced off-road componentry available. Combining all of SUNTOUR's state-of-the-art technology, XC-Pro includes AccuShift Plus, Grease Guard, Multi-Mount, PowerRings, and Self-Energizing Brakes.

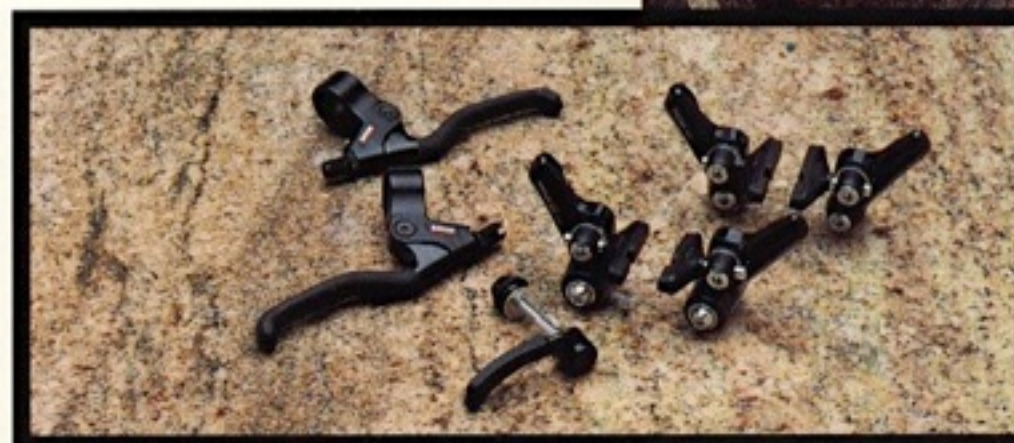


With options that include a short-cage derailleur, super low-profile brakes and a MicroLight bottom bracket, XC-Pro's components are designed for strength and ultra-light weight. Part-for-part, XC-Pro is 15-40% lighter than any competition. This tough, compact group represents SUNTOUR's undeniable commitment to build the best.



XC COMP

SUNTOUR XC-Comp offers many of the advantages and technology of our XC-Pro gruppo, at a truly affordable price-point. Light, durable features like AccuShift Plus, X-Press shifters, Multi-Mount and PowerRings make this flexible group race-ready and competitive. Our removable freehub, optional Self-Energizing Brakes and optional short-cage rear derailleur make XC-Comp the perfect choice for the expert-class racer who needs race-winning performance and demands lasting durability.



XC LTD

Sharing the same design technology and durability as the XC-Comp and XC-Pro gruppos, the XC-LTD group brings the enthusiast mountain biker top-of-the-line performance at an affordable price.

XC-LTD features SUNTOUR AccuShift Plus drivetrain with the sculpted look of much more expensive componentry, and offers a true mechanical advantage with our removable freehub, super low-profile brakes, and MultiMount shifter positioning. 2-finger brake levers and optional X-Press shifting give the rider excellent steering and shifting control.

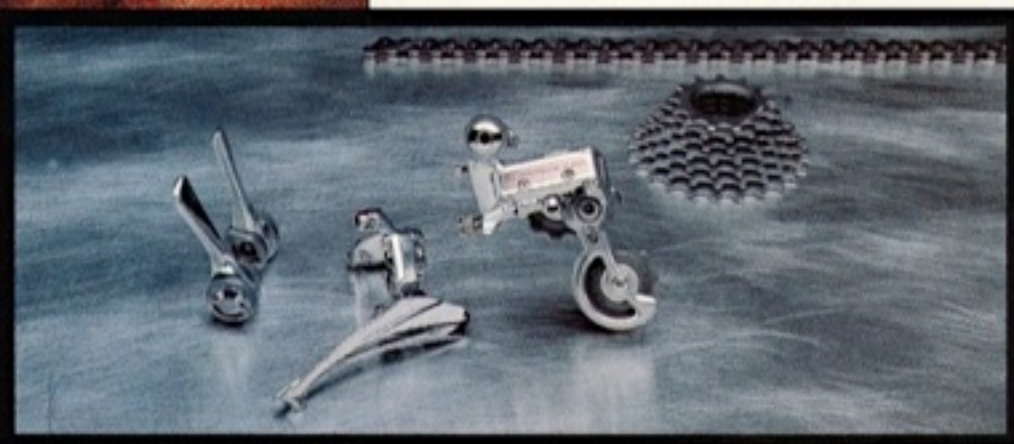


X-1

SUNTOUR's X-1 offers race-ready performance that is more affordable. Featuring positive gear changes with AccuShift Plus, X-1 comes complete with either competition-style top-mount or X-Press shifters. Our removable free-hub affords easy maintenance, and optional Chroma color kit gives a rider endless customizing possibilities. SUNTOUR X-1 is a durable, value-packed system with the same performance advantages found in our top groups, and the perfect choice for the most hard-core enthusiast.



SUPERBE PRO



The flagship of road racing gruppos, Superbe Pro features the precision craftsmanship and attention to detail that is available only from SUNTOUR. With cold-forged, durable super-light components, Superbe Pro features precision-ground bearing surfaces, sealed bearing jockey pulleys and optional Grease Guard componentry. AccuShift Plus provides reliable shifts, and SUNTOUR's removable freehub body allows easy maintenance. Built feather-light yet incredibly strong, it's easy to see why the race-proven Superbe Pro group is the choice of champions.

SL

The SL gruppo features AccuShift Plus Cogs and Chain, and offers several options. Ultra-light Cartridge Bearing hubs with aluminum axles provide low-friction, light-weight performance. An optional Grease Guard bottom bracket features radial contact bearings for long life and aluminum cups for light weight. Durable, light Command or Bar-Con shifters allow the ultimate choice of shift lever position and convenient, high speed shifts.



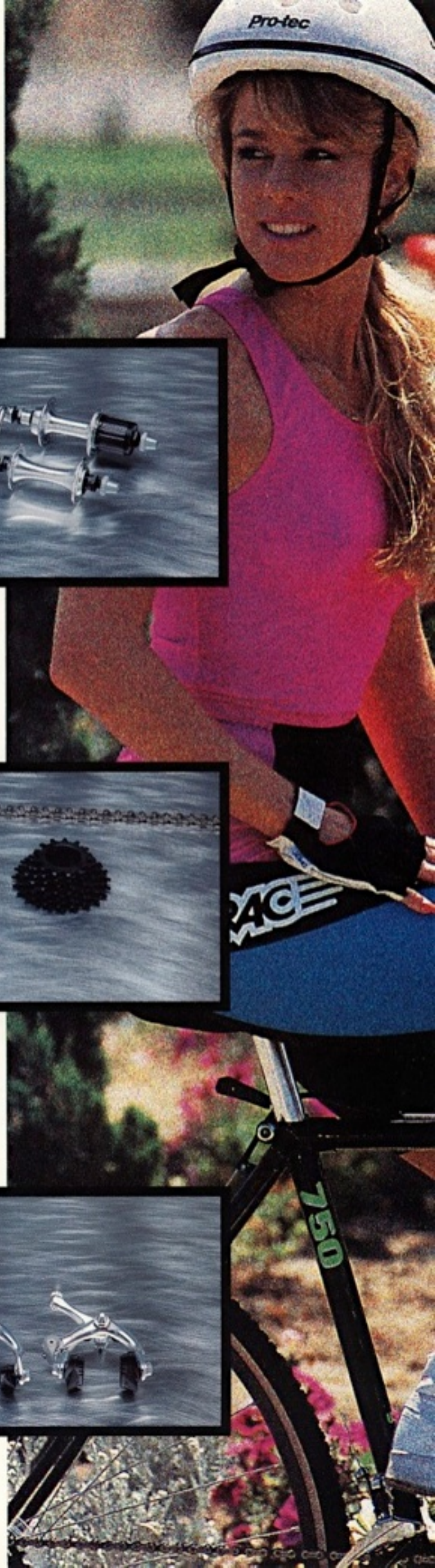
GPX



SUNTOUR GPX blends the same high-performance characteristics found on our top groups with a full compliment of aesthetic beauty. Shifting is smooth, with the options of Command Shift or Bar-Con shifters. More features include the dependable AccuShift Plus, our removable free-hub and SUNTOUR feather-weight, high-tech durability. The sleek GPX is unmatched in its price range; performance, value and aesthetics come together on this year's GPX to produce a highly attractive package.

RADIUS

Radius packs in value and performance like no other group. Patterned after the highly successful GPX Group, Radius offers good looks and sensible ergonomics as well as PowerRings, AccuShift Plus and Command Shifters, all within reach of the entry-level road racing enthusiast. Our removable free-hubs simplify maintenance, and make Radius the group for the cyclist who challenges himself for performance.



SUNTOUR is committed to providing the cycling world with the lightest, most durable performance bicycle components available. Our 1991 product line reflects years of research, testing, improvements and revolutionary engineering achievements.

Already standard equipment on the world's best competition and recreation bikes, SUNTOUR parts represent the peak of cycling technology.

For more information about SUNTOUR and SUNTOUR components, write us at **18650 72nd Avenue South, Kent, Washington, 98032.**



**18650 72nd Avenue
South, Kent,
Washington, 98032.**

© SUNTOUR

Specifications are subject to change without notice

