

# SCOTT®

A close-up photograph of a bicycle frame joint, specifically the head tube and fork area. The frame is dark, possibly black or dark grey, and is illuminated with a vibrant green light that highlights the contours and textures of the metal. The background is dark and out of focus, showing some faint lines and shapes that suggest the rest of the bike or a workshop environment.

S T R A T E G I C G E A R™

SCOTT

# 1991 MTN. BIKES

In 1986, SCOTT rewrote the rules for bicycle handlebars with simple, efficient and specific designs. Today, every SCOTT bicycle uses these same design philosophies. Our 1991 line features specific, efficient and lightweight frame designs with the utmost attention to proper design and specification on each component. Each SCOTT bicycle is designed for a specific riding profile, insuring a no-compromise product for each individual use.

**ADVENTURE SERIES** Designed as commuter/trail bikes, they are comfortable and forgiving, yet more agile than most designs at this level. **SPORTS SERIES** "True" mountain bikes for the aggressive/technical rider, these models provide superior single track performance. The Sport Series also includes our new SuperSlope frame design.

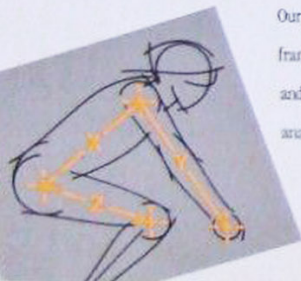
**RACING SERIES** Very light, very fast; our racing bicycles are no compromise off-road racing designs that perform best in racing conditions.

## MATERIALS

Our SCOTT research and development team continually evaluates both new and current materials to find the most effective solution for specific applications. Our commitment is to find the lightest, most efficient frame material *at every level*, and use the material in its most effective application. SCOTT 1991 mountain bikes utilize *oversize* chrome-moly steels, heat-treated *oversize* aluminums, ultra-high-strength heat-treated steels and molded carbon composites. For example our Sport Series models are constructed using a selected mix of *oversize* short/taper butted chrome-moly tubes for lightweight durability and precision; two of our Racing Series bicycles use ultra-high strength steels in traditional sizes for lower weight and more resilient frame sets.

## PRO-SPEC™ FRAME SYSTEM

Our goals at SCOTT are *proper fit* and *specific function* at all levels. The 1991 Pro-Spec frame design system addresses these goals; we've done our homework and it shows in the fit and ride of our bicycles. **PROPER FIT** Every SCOTT model is designed for the complete anatomy of the size/type of rider, not just their height. Through anatomically correct fit on



each bicycle, we can increase performance and comfort, whether you are male or female, short or tall. **ACCURATE HANDLING** We recognize that all "mountain bikes" do not get used in the same way. SCOTT bicycles are designed for specific types of riding use and handle accordingly. SCOTT Adventure, Sports, or Racing series bicycles will always display balanced, neutral handling characteristics and will excel at their respective disciplines.

**THE SYSTEM** SCOTT utilizes a variety of geometries, for series and size; • Variable seat tube angles for biomechanical efficiency (as our frame gets larger we decrease the angle to put hips and knees in the proper place). • Variable sloping top tube design for lighter weight, resilient ride, and greater standover height (small bikes slope more). • SuperSlope frame design for the specific fit needs of women riders (smaller riders/women-shorter top tubes, plus increased standover). • Variable top tube/stem length/crank length for proper, natural, comfortable fit (bigger riders need longer top tubes). • Variable wheelbase, bottom bracket height, chainstay length—for accurate in-series handling characteristics.

## SCOTT RACING PRODUCTS (SRP)™

For 1991, SCOTT will introduce original equipment components that were developed to fit specific needs. If we couldn't find what we needed, we designed our own. Look for SRP features, they're designed to fit into our total integrated design program. **SRP FORKS** Our single butted, thin wall, minimum taper forks use an 800 mm radius and selected Japanese chrome-moly for strength, lightweight, and resiliency. **SRP STEMS** Designed to work in concert with ProSpec geometries: the SRP EH Stem uses a longer column for greater adjustability (Adventure Series) and the SRP UL is a welded aluminum stem for light weight (245 grams) and shock absorption (Racing Series). **SRP CHAINSTAYS** Single butted, single bend chainstay uses minimum taper to increase rear triangle stiffness without weight penalties. **SCOTT 1991 PRO-PACKAGE** Certified SCOTT dealers can upgrade any SCOTT bicycle with AT-4 Pro handlebars, SCOTT Unishocks and SCOTT Self-Energizing brakes to inexpensively increase performance and safety.



SCOTT  
TIONS

## RACING



### TEAM RACING

- Ritchey Logic Prestige
- Logic fork
- SRP UL 245 gram aluminum stem
- Suntour XC grease-guard
- Ritchey componentry
- New Mavic M231 CD rims
- DT stainless 15 ga. spokes

### COMP RACING

- Ritchey Logic Prestige main tubes
- SRP butted fork and chainstays
- SRP UL 245 gram aluminum stem
- Suntour XC-Comp, Dia-Compe and Ritchey components
- New Mavic M231 CD rims
- DT stainless 15 ga. spokes

### SUPER LIMITED

- New Showa heat-treated 0.5-7000 series aluminum
- SRP butted fork
- New Suntour SC-LTD Express
- Avocet saddle
- Ritchey force tires
- Dia-Compe 996 brakes
- New Araya RM 20 rims

SCOTT  
TIONS

# CMR



The 1991 **SCOTT CMR** represents our continuing commitment to design and materials. The CMR frame is a one-piece carbon composite molding that laminates unidirectional carbon fibers and DuPont Spectra™ fibers to form a seamless, structural skin. These incredibly tough fibers are oriented, through computer analysis, in the most efficient directions to give the frame the stiffness and strength it needs without sacrificing ride comfort. This is, simply, the most effective application of a material twice the strength of steel, at half the weight. The CMR is lighter, stronger, stiffer and more repairable than steel, aluminum, or titanium. Weighing in at about 3.2 lbs., laterally rigid, without a harsh ride. Of course, the CMR is a true racing bicycle, with the full compliment of Pro-Spec design features. The **SCOTT CMR**, the new standard.

SCOTT

# SPORTS



## MONTANA

- Tange O.S. short/taper butted tubes
- SRP O.S. fork and chainstay
- Shimano 500 LX STI
- Low profile brakes/3 finger levers
- Avocet saddle
- New SCOTT NPX 205 tires

## MONTANA SUPERSLOPE

- Same as Montana, except:
- Superslope Pro • Spec geometry to fit longer legs/shorter torsos
- Narrower handlebars
- Shorter stems
- Women's saddle



## BOULDER

- Tange O.S. short/taper butted tubes
- SRP butted fork and chainstay
- Shimano Deore LX with Deore DX STI Levers
- New Araya RM-20 rims
- Low profile brakes/3 finger levers
- Avocet saddle



SCOTT

# ADVENTURE



## SAWTOOTH

- Full chrome-moly frame/fork
- SRP Design fork
- Shimano 300 LX STI
- Low profile brakes, 3 finger levers
- SRP EH stem

## PEAK

- Shimano 200 GS STI
- Low profile brakes
- Chrome-moly main and steer tubes
- Chromoly bar/stem
- SRP EH stem



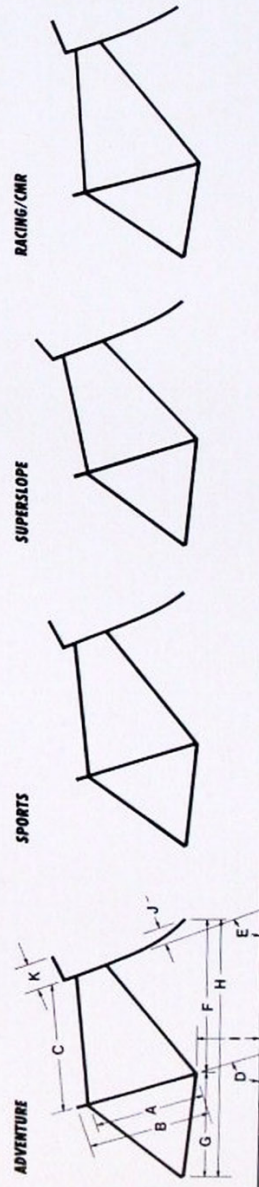
## JR. TEAM

- 24" aluminum wheels
- Fits ages 9-12
- Shimano Hyperglide 18spd. SISTY-20
- Scaled down components
- Aluminum cranks



# JUNIOR

	IN. TEAM	PEAK	SAWTOOTH	MONTANA	BOULDER	SUPER LIMITED	COMP RACING	TEAM RACING
<b>MODEL SIZES</b>	14", 16", 18", 19.5", 21"	14", 16", 18", 19.5", 21"	14", 16", 18", 19.5", 21"	14", 16", 18", 19.5", 21"	14", 16", 18", 19.5", 21"	16", 18", 19.5", 21"	16", 18", 19.5", 21"	16", 18", 19.5"
<b>COLOR</b>	GREEN/WHITE/ORANGE	GREEN/WHITE	BLUE/WHITE	BLACK/GREEN CORAL/WHITE	RED/YELLOW	FLAME RED/WHITE	WHITE/GREEN	GREEN/WHITE/ORANGE
<b>FRAME</b>	HI-TENSILE STEEL	SCOTT 4130 CHRO-MO HI-TENSILE STEEL	SCOTT 4130 CHRO-MO O.S.	TANGE O.S. CHRO-MO D.B.	TANGE O.S. CHRO-MO D.B.	SHOVA 7018/956 ALUMINUM	TANGE/RITCHEY PRESTIGE MIX	TANGE/RITCHEY PRESTIGE MIX
<b>FORK</b>	HI-TENSILE STEEL	SCOTT 4130 CHRO-MO HI-TENSILE STEEL	SCOTT 4130 CHRO-MO 800R	SCOTT SRP 4130 O.S. CHRO-MO 800R S.B.	SCOTT SRP 4130 O.S. CHRO-MO 800R S.B.	SCOTT SRP 4130 O.S. CHRO-MO 800R S.B.	SCOTT SRP 4130 CHRO-MO 800R S.B.	SCOTT SRP 4130 CHRO-MO 800R S.B.
<b>CRANK SET</b>	S.R. 4PC-T404 28-38-48"	SHIMANO 200 GS HI-TENSILE STEEL	SHIMANO 300 LX 28-38-48 SG B10	SHIMANO 500 LX 24-36-46 SG RD	SHIMANO 500 LX 24-36-46 SG RD	SHIMANO 500 LX 24-36-46 SG RD	SUNTOUR XC-COMP 24-36-46 POWERING	SUNTOUR XC-COMP 24-36-46 POWERING
<b>BOTTOM BRACKET</b>	Y.S.T. STEEL	SEALED YST 611	SEALED YST 611 NW	SEALED/SATIN YST WAKATSUKI	SEALED/SATIN YST WAKATSUKI	SEALED/SATIN YST WAKATSUKI	SEALED/SATIN YST WAKATSUKI	SEALED/SATIN YST WAKATSUKI
<b>PEDALS</b>	VICTOR VP-870	VICTOR VP-870	VICTOR VP-8655A	VICTOR VP-865A	WELLO LI 893 SEALED	WELLO LI 893 SEALED	WELLO LI 893 SEALED	SUNTOUR XC-PRO GREASE GUARD
<b>DERAILLEURS</b>	SHIMANO TT-20 SIS	SHIMANO STI 200 GS L.C.	SHIMANO STI 300 LX L.C.	SHIMANO STI 500 LX L.C.	SHIMANO STI DEORE LX L.C.	SHIMANO STI DEORE LX L.C.	SUNTOUR XC-COMP L.C. ACCUSHIFT PLUS	SUNTOUR XC-PRO L.C. ACCUSHIFT PLUS
<b>SHIFTERS</b>	SHIMANO TT-20 SIS	SHIMANO 200 GS STI	SHIMANO 300 LX STI	SHIMANO 500 LX STI	SHIMANO DEORE DX STI	SHIMANO DEORE DX STI	SUNTOUR NEW 3-PRESS COMP	SUNTOUR THUMB MULTIPOINT
<b>FREEWHEEL</b>	MF-HG-20-6	SHIMANO 13-30 CS-HG30-8	SHIMANO 13-30 CS-HG30-8	SHIMANO 13-30 CS-HG50-7	SHIMANO 13-30 CS-HG70-7	SHIMANO 13-30 CS-HG70-7	SUNTOUR ACCUSHIFT PLUS 13-30 PB-AL-10	SUNTOUR ACCUSHIFT PLUS 12-28-35 AP-90
<b>CHAIN</b>	SHIMANO HG-50	SHIMANO HG-50	SHIMANO HG-50	SHIMANO HG-50	SHIMANO HG-70	SHIMANO HG-70	SUNTOUR AP-10 XC-PRO	SUNTOUR AP-10 XC-PRO
<b>BRAKES</b>	CHANG STAR 889 P	SHIMANO BR-M200 LOW	SHIMANO BR-M201 LOW	SHIMANO BR-M454 LOW	SHIMANO BR-M550 LOW	SHIMANO BR-M550 LOW	DIA-COMPE 986 SILVER	DIA-COMPE/RITCHEY 986 (NEW) SILVER
<b>BRAKE LEVERS</b>	CHANG STAR 392 P	SHIMANO 200 GS STI-S	SHIMANO 300 LX STI-S	SHIMANO 500 LX STI-S	SHIMANO DEORE DX STI-S	SHIMANO DEORE DX STI-S	DIA-COMPE/RITCHEY (NEW) SILVER	DIA-COMPE/RITCHEY (NEW) SILVER
<b>HUBS</b>	STEEL-SEALED	SHIMANO 200 GS FREERIB	SHIMANO 300 LX FREERIB	SHIMANO 500 LX FREERIB	SHIMANO DEORE LX FREERIB	SHIMANO DEORE LX FREERIB	SUNTOUR XC-COMP FREERIB	SUNTOUR XC-PRO GREASE GUARD
<b>RIMS</b>	ALEXA SILVER ALUM. 24x1.75	SCOTT (NEW) NPM-185	SCOTT (NEW) NPM-185	SCOTT (NEW) NPM-205	SCOTT (NEW) NPM-205	SCOTT (NEW) NPM-205	MAYC 231 SILVER-32	MAYC 231 CD HARDANO-32
<b>TIRES</b>	GUMWALL KNORRY	SCOTT (NEW) NPM-185	SCOTT (NEW) NPM-185	SCOTT (NEW) NPM-205	SCOTT (NEW) NPM-205	SCOTT (NEW) NPM-205	RITCHEY MEGABITE HARDRIDE	RITCHEY MEGABITE HARDANO-32
<b>SPOKES</b>	C.P. 14 GA.	C.P. 14 GA.	C.P. 14 GA.	STAINLESS 14 GA.	STAINLESS 14 GA.	STAINLESS 14 GA.	DT SWISS CHAMPION 15 GA.	DT SWISS CHAMPION 15 GA.
<b>HANDLEBARS</b>	STEEL-BLACK 540 MM	CHRO-MO BLACK 560 MM	CHRO-MO BLACK 560 MM	CHRO-MO BLACK 560 MM	CHRO-MO BLACK 560 MM	CHRO-MO BLACK 560 MM	ALUM. SILVER BUDGE 560 MM	SCOTT SRP 165GR. ALUM. 560 MM
<b>STEM</b>	STEEL-BLACK 80 MM	SCOTT XTRA-BIT SRP CHRO-MO BLACK	SCOTT XTRA-BIT SRP CHRO-MO BLACK	SCOTT XTRA-BIT SRP CHRO-MO BLACK	SCOTT XTRA-BIT SRP CHRO-MO BLACK	SCOTT XTRA-BIT SRP CHRO-MO BLACK	SCOTT SRP ALUM 70400 SILVER	SCOTT SRP ALUM 70400 SILVER
<b>HEADSET</b>	BLACK YST STEEL	BLACK YST SEALED	BLACK YST 717 SEALED	BLACK YST 717 SEALED	BLACK YST 717 SEALED	BLACK YST 717 SEALED	RITCHEY LOGIC SILVER	RITCHEY LOGIC SILVER
<b>SADDLE</b>	VISOURT 2292	SCOTT/VISOURT 2256	SCOTT/VISOURT 2256	SCOTT/VISOURT 2256	SCOTT/VISOURT 2256	SCOTT/VISOURT 2256	AVOCET R-V BLACK	RITCHEY (NEW) WHITE LEATHER
<b>SEAT POST</b>	STEEL BLACK	ALUMINUM BLACK	KALLOY SP-242 BLACK-ALUM. 306mm	M.J. BLACK CHROME MS-340B CHRO-MO 306mm	M.J. BLACK CHROME MS-340B CHRO-MO 306mm	M.J. BLACK CHROME MS-340B CHRO-MO 306mm	RITCHEY LOGIC ALUM. SILVER	RITCHEY LOGIC ALUM. SILVER
<b>GRIPS</b>	FOAM	SCOTT AT-4	SCOTT AT-4	SCOTT AT-4	SCOTT AT-4	SCOTT AT-4	SCOTT AT-4	SCOTT AT-4
<b>WEIGHT (est.)</b>	29 LBS.	30.7 LBS.	30.1 LBS.	28.9 LBS.	28.3 LBS.	27.9 LBS.	26.2 LBS.	25.0 LBS.



SERIES	ADVENTURE			SPORTS			SPORTS SUPERSLOPE			RACING			CMR		
	SIZE	14"	16"	18"	19.5"	21"	14"	16"	18"	19.5"	21"	14"	16"	18"	19.5"
<b>A/SEAT TUBE C-C</b>	355	405	457	495	534	554	355	418	457	495	534	390	440	490	490
<b>B/SEAT TUBE C-T</b>	392	441	492	530	569	588	400	450	502	540	579	400	492	530	569
<b>C/TOP TUBE</b>	515	540	560	575	585	520	545	560	575	585	525	540	555	575	585
<b>D/SEAT TUBE ANGLE</b>	74	73.5	73	73	73	73	74	73.5	73	73	73	74	74	74	73.5
<b>E/HEAD TUBE ANGLE</b>	69.5	70	70	70	70.5	70	70	70.5	70.5	71	70.5	70	70.5	70	71
<b>F/FRONT CENTER</b>	614	627	647	662	671	612	612	634	645	644	595	605	615	640	642
<b>G/REAR CENTER</b>	430	430	430	430	430	425	425	425	425	425	430	430	420	420	420
<b>H/WHEELBASE</b>	1042	1055	1075	1090	1100	1035	1050	1055	1065	1065	1020	1034	1050	1060	1058
<b>I/B.B. HEIGHT</b>	299	300	300	300	300	298	300	300	300	300	300	300	292	292	295
<b>J/FORK OFFSET</b>	48	48	48	48	48	45	45	45	45	45	45	41	41	41	44
<b>K/STEM LENGTH</b>	110	110	130	130	130	110	110	130	130	130	90	110	120	135	150
<b>CRANK LENGTH</b>	170	170	170	175	175	170	170	175	175	175	170	170	170	172.5	175

All measurements in millimeters. Specifications subject to change without notice.

# SCOTT®

## **AUSTRALIA**

WINTERSKI Imports  
93 St. George Creshtent  
Sandy Point  
Sydney/Australia 2171  
Tel. (02) 7734975  
Fax. (02) 7921769

## **AUSTRIA**

SCOTT Vertriebs GmbH  
Bernhard-Höfel-Strasse 14  
6020 Innsbruck  
Tel. 05222/43531  
Fax. 05222/41209

## **BELGIUM**

BITRA SPORT b.v.b.a.  
L. Maesstraat 2  
3070 Kortenberg  
Tel. (02) 759 50 15  
Fax. (02) 759 52 29

## **FINLAND**

Oy Skipatrol AB  
Ruukinmestarintie 5-7  
SF-02320 Espoo  
Tel. 090/8019900  
Fax. 080/24484

## **GERMANY**

SCOTT  
(Deutschland) GmbH  
Münchenerstrasse 62  
D-8060 Dachau  
Tel. 08131/71073  
Fax. 08131/86219

## **GREAT BRITAIN**

Bert Harkins Racing  
Unit 6, Townsend Centre  
Houghton Regis,  
Dunstable, Beds LU5  
Tel. 0582/472374  
Fax. 0582/472379

## **NETHERLANDS**

PAWO  
Fevolaan 25  
1382 JX Weesp  
Tel. 02940/15073  
Fax. 02940/17685

## **SCOTT CANADA INC.**

3150 Hawthorne Road  
Ottawa, Ontario  
K1G 5H5 (CAN)  
Tel. (613) 738 24 24  
Fax. (613) 738 92 24

## **SCOTT USA**

P.O. 2030  
Sun Valley, Idaho  
83353  
Tel. (208)622 1000  
Fax. (208)622 1006

## **SPAIN**

Kastmar  
Avda. del Rosario No 9  
Cuarte de Huerva  
Zaragoza 50410  
Tel. 076/359750  
Fax. 076/356378

## **SWITZERLAND**

SCOTT (Schweiz) AG  
Chemin de Torry 1  
CH-1763 Granges-Paccot  
Tel. 037/26 52 01  
Fax. 037/26 52 91

## **ITALY**

ACERBIS PLASTICA Italia SpA  
Via Volta, 5  
I-24021 Albino  
Tel. 035/752300  
Fax. 035/752309

## **NEW ZEALAND**

COLORADO TRADERS LTD.  
P.O. Box 90  
Wellington  
Tel. 64-4-736-459  
Fax. 64-4-712-272

## **JAPAN**

JPG INC.  
Shinwa Bldg 2-14-6  
Tomigaya, Shibuya-ku  
Tokyo, 151 (JAP)  
Tel. (03) 468 43 81  
Fax. (03) 468 34 01

## **SCANDINAVIA** contact:

SCOTT (EUROPE) SA  
Tel. 037/26 52 01  
Fax. 037/26 52 91

# SCOTT USA

