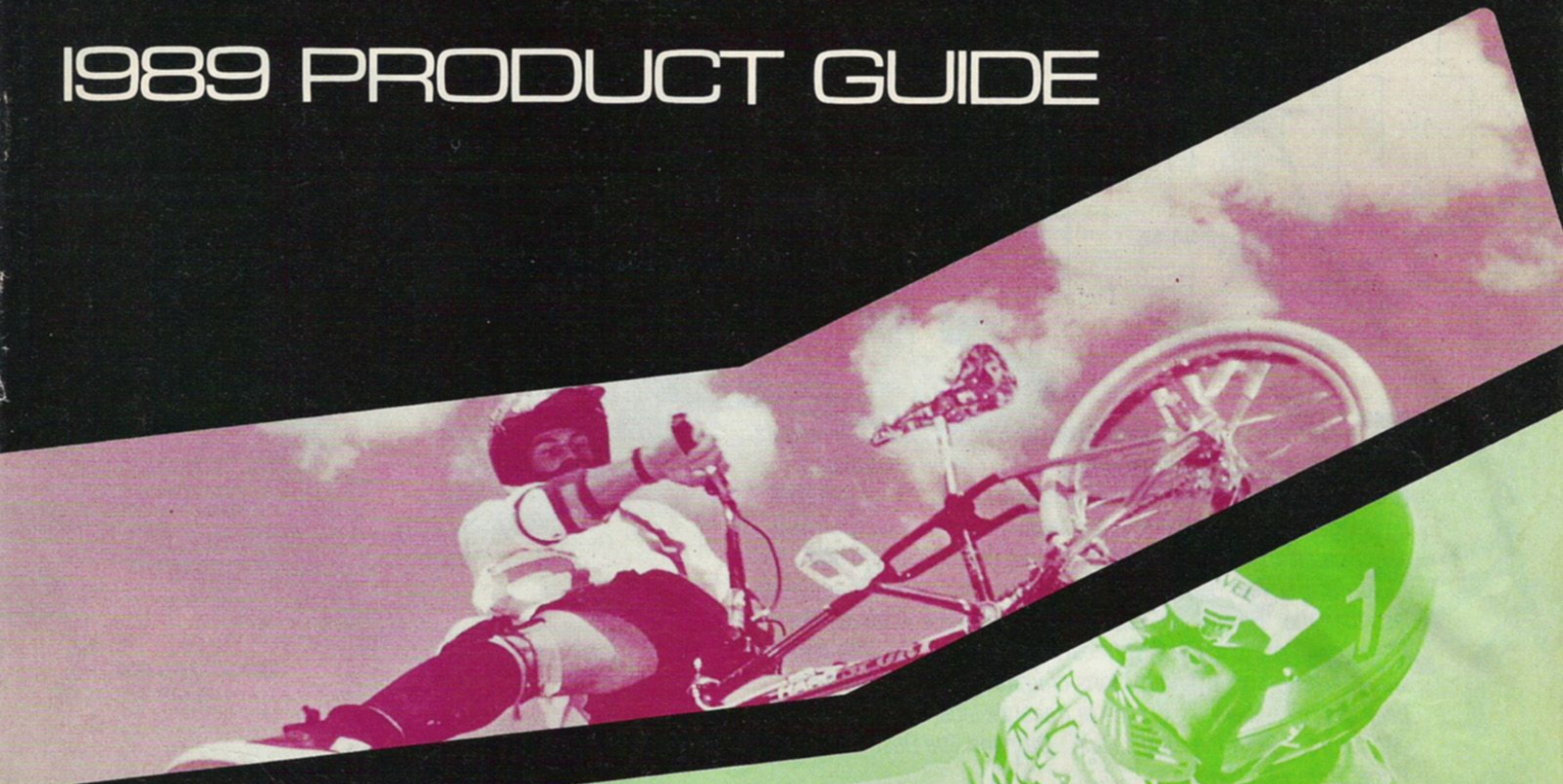


1989 PRODUCT GUIDE



# HARRO DESIGNS



# FREESTYLE

**T**eam Haro's aerial master Brian Blyther isn't afraid of heights. His Highness is two-time King of Vert ramp champ and Guinness Book of World Record holder. In the world of freestyle he is legendary. So is the bike he flies...The Haro Freestyler. You see, Brian along with \*Rider of The Year, Ron Wilkerson and \*Team of The Year, Team Haro simply wouldn't settle for anything less than the \*Bike of The Year. Why should you? After all, The Haro Freestyler was the first freestyle bike. Ever. The Bike that launched The Sport. And millions of imitations. Since then it's been the overwhelming choice of freestyle legends past, present and future. Follow the King's Rule...Demand The Best. Ride with Pride. Ride with Haro.

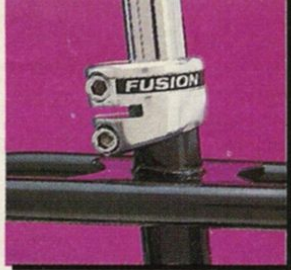


## TEAM MASTER

If you want to know what all freestyle bikes will look like in 1990 take a look at the 1989 Team Master. Radical. Versatile. Volatile. The Bike that defies boundaries. 100% 4130 chromoly frameset. Twin top tube design. Innovative sprocket guard. Reinforced headtube and bottom bracket. Trick tapered leg forks with close contour, flip-up pegs and thread-in peg bosses. Full cable guides. All new Fusion Twintorc alloy crankset, seatpost clamp and machined aluminum stem by DK. State-of-the-art Pro handlebars and reinforced seatpost. Dia-Compe 883 Aerial braking. ACS Freecoaster. Sealed bearing bottom bracket and high flange hubs. 48H Ukai chrome plated alloy rims. Surefooted Haro HPM 2.0 high pressure tires. Kashimax seating. Brilliant high polish chrome or black.







### MASTER

Same radical frame, fork and Pro handlebar as the Team Master only spec'd for the freestyler on a budget. All new Fusion one-piece 175mm chromoly crankset and Twintorc seatpost clamp. Odyssey Gyro/2001/Pitbull/RX3 braking. ACS high flange hubs. Araya 7X 48H alloy rims. Versatile Haro Multisurface tires and chromoly shaft/alloy clamp. Pro stem. Brilliant high polish chrome, black or red.



### INVERT

New two-into-one top tube design. 4130 chromoly maintubes and tapered leg forks. Odyssey Gyro/1999/Pitbull/RX3 braking. Durable one-piece crankset and Haro Unidirectional chainring. Sumo 48H alloy rims and Haro Multisurface tires. Brilliant high polish chrome, black or blue.



### SHREDDER

Our most affordable full feature freestyler. New two-into-one top tube design. Trick, tapered leg forks. Full cable guides. Haro Team handlebars and chromoly shaft stem. Responsive Odyssey 1999/RX braking front and rear. Sumo 48H alloy rims and Haro Multisurface tires. Tough one-piece crank and chromoly shaft pedals. Durable Suntour freewheel and KMC chain. Teflon lined cables. Brilliant high polish chrome or black.



### PSYCHO

Never before have we offered so much Haro Freestyler for so little. Same two-into-one frame design as Haro's legendary Sport model. Versatile handling. Surefooted Haro multisurface tires. Responsive Suntour coaster braking. Four bolt alloy stem. One-piece crank. Chromoly pedals. Team issue handlebars and Uni-Directional chainring. Available in black or red.



### MINI-SHREDDER

The ultimate Freestyler for little guys. Scaled down two-into-one top design frame, 16 inch wheels, Suntour coaster braking. Aggressive Cheng Shin tires. Alloy four bolt stem and Team issue handlebars. Black painted finish with day glo graphics.





# RACING

**S**ure, we'd like to sell you the same bike rookie pro sensation Mike King uses to dominate BMX racing. But we can't. Mikey needs it to defend his new ABA National #1 Pro Title: The Most Prestigious Prize in all of BMX. But Haro can do The Next Best Thing...Get you on the right track aboard a Mike King Designed Group 1. From the radical King replica Team Signature Monotrac to our affordable Group 1C and Group 2 Haro has got you covered. Just ask Mikey...There's no short cut to winning races. Dedication. Plenty of practice. And only the finest, no-compromise equipment...Haro Group 1. The One to Beat.

## GROUP 1 TEAM SIGNATURE

The Bike designed and ridden by current National Number 1 Pro Mikey King. Exotic Triple Butted 4130 aircraft chromoly Monotrac frameset. Sleek, tapered 4130 forks. Aggressive handling. Precision fabrication and finish. All new Fusion 180mm alloy Twintorc crankset, seatpost clamp and machined aluminum stem by DK. Dia-Compe 901/Tech 77 braking. Tange alloy headset. Sealed bearing bottom bracket and hubs. SR Beartrap pedals. Ukai 7X chrome plated rims. Tioga Comp 3 tires. Kashimax seating. Suntour free-wheel. Haro Pro handlebars. Brilliant high polish chrome or red.

Photo: Windy







### GROUP 1A

Shares the same Mikey King signature frame, fork and handlebar as the Team Signature. Only spec'd for the hot up and comer on a budget... All new Fusion one-piece chromoly crankset. Haro Uni-directional alloy chainring. Haro cold forged alloy Pro stem. Snappy Odyssey Pitbull/RX5 braking. ACS low flange hubs. Araya 7X rims. Cheng Shin tires. Brilliant high polish chrome, black or red.



### GROUP 1B

Same Mike King inspired Monotrac frameset as our Team Signature with CRMO maintubes. Same trick, tapered 4130 chromoly forks. All new Fusion one-piece chromoly crankset and Twin-torc seatpost clamp. Haro Uni-directional chainring and chromoly seatpost. ACS alloy hubs and aggressive 860 Tangent braking. Cheng Shin tires. Sumo 7X alloy rims. Suntour free-wheel. Brilliant high polish chrome, black or blue.



### GROUP 1C

Innovative Haro Monotrac frameset. Mike King Pro frame geometry. Team Haro Pro bend handlebars and alloy four bolt stem. Tough one-piece 175mm crankset and Haro Uni-Directional chainring. Odyssey 1999/RX2 braking. Surefooted Cheng Shin tires. Teflon lined cable housing. Brilliant high polish chrome or black.



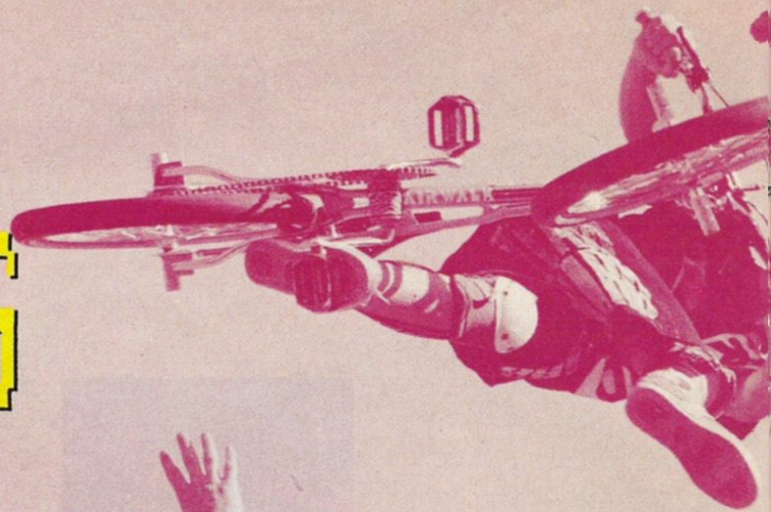
### GROUP 2

Mike King racing frame geometry. Team Haro Pro bend handlebars and Tuff Neck style stem. Responsive Odyssey 1999/RX2 braking with Teflon lined cable. Tough one-piece 175mm crankset. Chromoly shaft Victor pedals. Haro Uni-Directional chainring. Suntour free-wheel. Brilliant chrome finish.





# PROTECTIVE & CASUAL CLOTHING



**C**lothing...Covering for the human body. Standard equipment for the civilized world. Warmth. Protection. Style. But maybe not your style. Enter Haro. Not work clothes. Not school clothes. Not clothes like everyone else wears. Clothes designed with those who ride and seek leading edge styles, prints and patterns. Haro Wear...Clothes for those with open minds.

## HARO BIKES AND OTHER COOL STUFF SWEATSHIRT

Oversized crew collar sweatshirt. Massive Haro Designs bikes and other cool stuff back logo. Smaller pocket sized front logo. 50/50 poly cotton. Long sleeve. Black or white w/day glo logo. Small, medium or large.



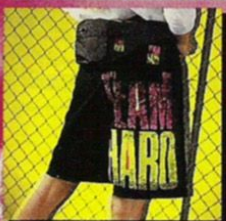
## TEAM HARO BUTTON UP SHIRT

Oversized short sleeve shirt. Left front pocket. Massive Team Haro back logo. 100% prewashed cotton. Black or white w/day glo Team Haro logo. Small, medium, large.



## TEAM HARO DEMO SHORT

Oversized, just above knee cut. Front pockets. Massive Team Haro leg logo. Velcro waist closure. Rear pocket. Woven Haro logo. 100% pre-washed cotton. Zipper fly. White, black, blue or neon orange. Waist sizes: 28, 30, 32 or 34.



## TEAM HARO FANNY PACK

Lightweight, durable nylon back pack. Black nylon. Easy adjust back straps. Multiple pockets. Woven Team Haro logo. Black w/day glo patch and zipper. One size fits all.



## TEAM HARO DEMO TOP

Oversized short sleeve ringer top. 100% prewashed heavy weight cotton. Massive Team Haro chest logo. Woven Haro logos. White, black, neon yellow or neon orange. Small, medium or large.



## HARO SOLDIER SALUTE PRINT SHORT

Oversized, just above the knee cut. Soldier Salute print. Front pockets. Team Haro woven leg patch. Velcro waist closure. Zipper fly. Rear pocket. 100% prewashed cotton. Blue/black, white/black, khaki/black. Waist sizes: 28, 30, 32 or 34.

## HARO DEMO PANTS

Casual, double pleat pant with pegged bottom. Velcro waist closure. Zipper fly. Front pocket. Large Haro lower left leg logo. Made to roll up. 100% prewashed cotton. Black or blue. Waist sizes: 28, 30, 32 or 34.

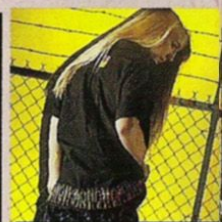


## HARO SOLDIER SALUTE PRINT PANT

Casual pant with pegged bottom. Velcro waist closure. Zipper fly. Front pockets. Rear pocket. Soldier salute print. Woven Haro logo. Made to roll up. 100% prewashed cotton. Blue/black, white/black, or khaki/black. Waist sizes: 28, 30, 32 or 34.

## HARO HUMANOID BUTTON UP SHIRT

Oversized short sleeve shirt. Left front pocket. Day glo Humanoid shirt tail graphic and Team Haro woven label. 100% prewashed cotton. Black or white. Small, medium or large.



## HARO INDUSTRY STANDARD MOCK TURTLE

Oversized mock turtle neck T-shirt. Two color, not set sized Haro industry Standard logo on left front. 100% cotton. Long sleeve. Black or white with contrasting day glo embroidery.



## TEAM HARO ZIP UP JACKETS

Full university style jackets. Two styles. All black with massive Team Haro day glo logo and woven shoulder patch or black body with khaki Soldier Salute print arms, massive Team Haro back logo and woven shoulder patch. Barn feature (all front pockets, full length front zipper, draw collar and 100% prewashed cotton). Small, medium or large.

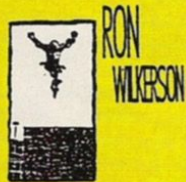
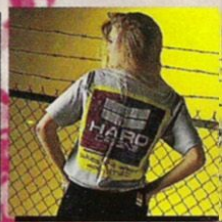
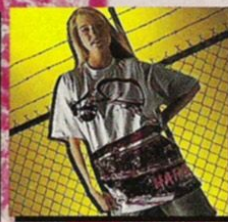


## T-SHIRTS

### Team Haro logo

### Bar hop air

### Haro Designs Bikes & Other Cool Stuff Logo



Ron Wilkerson fakeie air

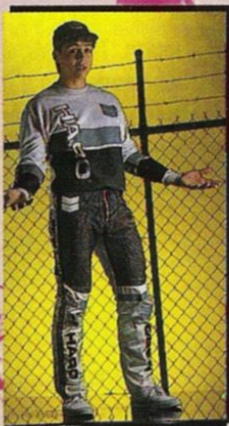


Haro Standard of the Biking World



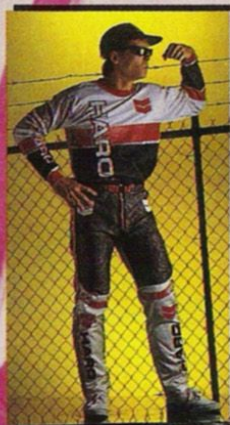
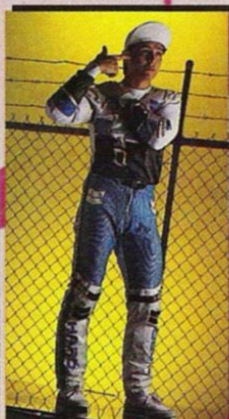
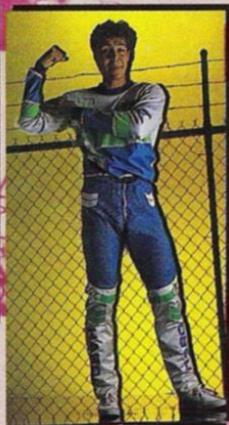
Haro Products for Better Life





### TECH SERIES SKATE KNEE GUARDS

Total knee protection. High impact plastic knee cap outer. Removable washable foam inner pad. Full support elastic back. Dual Velcro fastening. Tough Lycra skin over molded foam. White, blue, red or black. Small or large.



### ELBOW GUARDS

Two styles. Tech Series: Futuristic styling. Shock absorbing molded foam covered with tough Lycra skin. Team Series: Tough nylon pack cloth outer. Lightweight foam inner. Both features high impact plastic elbow cap and three, wide Velcro straps. Small and large. Tech: Silver, red, black, blue. Team: Blue, white, black or red.



### MOUTH GUARDS

Durable high impact plastic. Dual strap helmet mounting. Unique "floating" suspension system allows guard to float away from face. Full venting for cool, easy breathing. One size fits all. White, red, yellow or black. (Designed to keep bugs & rocks out.)



### MODE 3 RACING PANTS

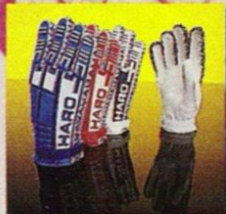
Tough nylon. Satin backside and shine areas. Fully vented front mesh panel. 100% Trikot lined. Lightweight knee, shin and hip padding. Quick release, easy adjust, "floating" belt. Form fitting two-way Spandex side stripes. Blue/black/white, blue/blue/white, red/white/blue, red/white/black, black/white/grey or blue/green/white. Waist sizes 26 to 34 even only.

### TEAM ISSUE JERSEY

Lightweight, durable Poly/cotton front half and sleeves. Cool, breathable mesh back panel. Snug, contrasting cuffs and collar. Long tail. Tailored fit. Bold Haro graphics. Available in some color combos as Mode 3 racing pants. Sizes boys medium through mens extra large.

### TECH SERIES GLOVES

Futuristic styling. Protective lycra covered molded foam backhand. Man-made leather palm. Breathable form fitting Spandex finger in seam. Quick adjust Velcro wrist band. Blue, red, white or black. Small, medium or large.



### LEATHER GLOVES

Full coverage backhand padding. Lightly padded man-made leather palm. Snug Spandex cuff. Cool, breathable mesh backhand. Yellow, blue, red w/white & blue, black, red w/white & black. Extra small, small, medium or large.



### STRETCH NEO-PRENE GLOVES

New for 1989. Two styles: Full finger and half finger. Form fitting neoprene backhand. Wide Velcro wrist strap. Unpadded palm. Full coverage backhand Haro logos. Black w/pink & white, turquoise w/yellow & white or black w/white & blue. Small, medium or large.



### SHINGUARDS



### TEAM ISSUE TOUR LUGGAGE

Three styles. Backpack, fumbo gear bag or flight bag. All feature heavy duty nylon pack cloth outer, industrial strength zippers, straps, stitching, team Haro patches and day glo Haro hamamoid graphics. Flight bag holds one 20-inch bike. All are black w/day glo yellow & pink graphics.



### COTTON GLOVES

### Mikey King speed jump

are 100% Heavy-Duty cotton.



# COMPONENTS

## TIRES

Five models: New HPM 2.0 high pressure multisurface, Multisurface 175 Aerial 175, HPF 2.0: wider and higher pressure version of Aerial and G-Force 1.5 semi-slick street racer.



## SPROCKETS

Two models: Uni-Directional for use with standard spider or CD Disc. Both precision machined aircraft aluminum. 42T, 43T, 44T. Satin black or clear anodized.



## GROUP 1 TEAM SIGNATURE FRAME/FORKSET

Designed and ridden by ABA National #1 Pro Mike King. 100% triple butted 4130 chromoly tubing. Rear monostay. Tapered fork legs. Cable guides. Wrap around head gusset. State of the art race handling. Brilliant high polish chrome, red or black painted finishes.



## ORIGINAL MASTER FRAME/FORKSET

The overwhelming choice of professional flatland freestylers. 100% 4130 chromoly. Twin top tube design. Short wheelbase. Aggressive flatland handling. Large rear platforms. Flush mount, fold-up fork pegs. Chainstay U-brake bosses. Cable guides. Wrap around head tub gusset.



## TEAM MASTER FRAME/FORKSET

The Chassis that changed freestyle forever. 100% 4130 chromoly. Unique bash guard. Twin top tubes. New style tapered leg forks with thread-in fork pegs and flush mount flip-up pegs. Reinforced headtube. Cable guides. Brilliant high polish chrome, red or black painted finishes.



## TEAM HANDLEBARS

Standard equipment on many of our complete bikes. 100% 4130 chromoly. Oversized, knurled crossbar on freestyle model. Wide, flat pro bend on racing model. Brilliant high polish chrome or painted finishes.



## PRO HANDLEBARS

100% 4130 chromoly. Lightweight, tapered tubing. Increased wall thickness in high stress areas. Ultra narrow lower section for unrivalled clearance during gate starts and aerials. Knurled crossbar on freestyle model. Wide, flat pro bend on racing model.



## FLO PANEL NUMBER PLATE

The most popular number plate in BMX history. Quick change dual Velcro mounting. Weight saving, aerodynamic venting. Six solid colors. For use with Haro self adhesive pro numbers: 0 to 9 in assorted colors.



## PRO STEMS

Available in four models: Pro Racing SL (standard length), Pro Racing XL (extra long), Pro Freestyle SL, Pro Freestyle XL. Cold forged aircraft alloy clamp. Heat treated 4130 chromoly knurled chromoly steering shaft. Hollow stem bolts on freestyle models.



## TEAM HARO FREE-STYLE VIDEO

38 minutes of non-stop action, humor, music and more with freestyle's Team of the Year: Wilkerson, Blyther, Hoffman, Moliterno, Nourie and Gruttola. Music by Bob Haro and more. VHS format.



**F**usion. The merging of separate elements into a union. The all-new Fusion line by Haro combines design input from the world's top riders and racers with uncompromising materials and manufacturing. The Result is the absolute highest quality contemporary componentry available. So if you believe as we do that a bike is only as good as the sum of its parts don't short change your performance...Invest in The Best. Fusion by Haro.

## FUSION TWINTORC SEAT POST CLAMP

New for 1989. Precision forged from 6063T6 aircraft aluminum. Two Grade 8 chromoly Allen bolts offer twice the clamping power. Ends seat post slippage problems. Available in black or highly polished silver.



## FUSION 3-PIECE CRANKSET

New for 1989. Cold forged aircraft alloy. Heat treated CRMO spindle. Precision sealed bearings. Tri-forc arm fastening system. One-bolt quick-change gearing. Stiffest free/street/race crankset ever. Available in 175mm/180mm, satin black or polished silver.



## FUSION 1-PIECE CRANKS

New for 1989. Heat treated 4130 chromoly. Brilliant polished chrome finish. 175mm length.



## FUSION STEMS

New for 1989. Made exclusively for Haro by DK Products. Precision machined 6063T6 aircraft aluminum. Grade 8 chromoly Allen cap and hex binder bolt with alloy wedge. Fusion cap logo. Three styles: Racing SL (standard length), Racing XL (extra long) and Freestyle with hollow stem bolt. Brilliant high polish finish.



## SEAT POSTS

Four styles: New Fusion RXL specially reinforced for the ultimate in strength. Haro Team model: ultra-light, high performance. All 100% chromoly in straight or lay back.



All 1989 HARO bicycles are covered by a limited Lifetime Warranty. See your local HARO Dealer for details.