

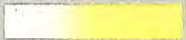
**TREK
BICYCLES
1986**



TREK

PRO SERIES 560

The first in Trek's line of dedicated high-performance racing bikes, the 560 transforms Reynolds 531 tubing and Trek investment castings into a tightly responsive short-wheelbase frame. The component group includes Shimano S.I.S. rear derailleur and shift levers for fast error-free shifts in the most demanding situations. Shimano 600EX crankset with Bio-Pace 42/52 chainrings for more efficient power transmission to the rear wheels. And Shimano 600 aerodynamic-profile brakeset. The Matrix Titan hard-anodized 700C wheels are race ready, with a pair of Specialized new slick tires for lowered rolling resistance. Weight: 23.2 lbs.



Colors: crimson/yellow, yellow and white fade.



PRO SERIES 760

Consider a silver-brazed all-Reynolds 531 frame crafted to exacting specifications. A professional racing bicycle using an advanced set of investment-cast lugs that measurably enhance the stiffness and response of the overall frame. And carefully-selected componentry to match—top-of-the-line Specialized and SunTour Superbe equipment. Responsive, lightweight wheels are solidly built from Matrix Titan 700C hard-anodized rims around Specialized double-sealed hubs with new Specialized slick tires that lower rolling resistance without lowering traction. Weight: 22.3 lbs.



Colors: race green/lavender,
blue and white fade.

PRO SERIES 770

This classic machine is composed from the best known (and most thoroughly tested) components in the racing world—Campagnolo Super Record. They adorn a stiff and steeply configured frame built from Reynolds 531 double-buttet tubing with Trek investment-cast lugs, shells, stays, and fork crown. The 770's Campy Super group includes forged alloy 53/42 crankset to handle the horsepower, SL pedals with flawlessly-ground bearing races, and low-flange hubs laced to Matrix Iso 32-hole aerodynamic rims. Also from Italy, Cinelli's satin-finished "Giro" handlebar and IA alloy stem. Weight: 20.1 lbs.



Colors: yellow/blue, pink and white fade.
Also available as a frameset.



TRI SERIES 500

Designed with the triathlete and performance rider in mind, this bike starts with Reynolds 531 double-butted tubing, silver-brazed to Trek's precision investment-castings for greater stiffness and more perfect alignment. Componentry is equally advanced, utilizing elements from Shimano's N and Z series drivetrain group and black-anodized brakeset. SR has provided the model 500's forged alloy FX crankset, pedals, handlebar and stem. And Rigida wheels are built around Maillard's highly-polished 600 hubs with low-friction bearings that are sealed to keep out water and grit. Weight: 23.4 lbs.



Colors: pewter/black; red and white fade.

TRI SERIES 700

A no-compromise Reynolds 531 frameset for the serious triathlete. Drivetrain is Shimano's grey-anodized N-600 group, equipped with S.I.S. shifting mechanism. Matching sidepull brakes and sealed drop-center pedals are from the same modern component group, sculpted to cheat the wind and provide optimum time-trialing efficiency. With their lightweight response and clincher reliability, the Specialized/Matrix Titan 700C wheels are well suited for both racing and training. New streamlined delta design saddle is also from Specialized, with coordinating white Pro Cage by Blackburn. Weight: 23.1 lbs.



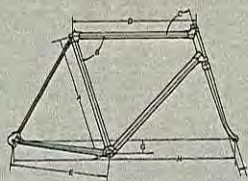
Colors: race blue/white, black and white fade.



FRAME GEOMETRY FOR MODELS 560, 760

	A	B	C	D	E	F	G	H
FRAME	SEAT TUBE	SEAT TUBE	HEAD TUBE	TOP TUBE	CHAIN STAY	FORK OFFSET	DROP	WHEEL BASE
SIZE	length	angle	angle	length	length	OFFSET	DROP	BASE
19"	47.5	73.5°	72.0°	53.6	41.5	4.2	7.2	97.7
21"	52.1	73.5°	72.0°	55.0	41.5	4.2	7.2	99.1
23"	55.9	73.5°	73.0°	56.0	41.5	4.2	7.2	100.4
25"	59.6	73.5°	73.0°	57.5	41.5	4.2	7.2	100.9
25.5"	63.5	73.5°	73.0°	58.5	41.5	4.2	7.2	101.8

All dimensions are in centimeters, unless otherwise stated.



FRAME GEOMETRY FOR MODEL 770

	A	B	C	D	E	F	G	H
50 cm	48.9	74.5°	73.5°	53.5	41.2	4.2	6.6	97.1
52 cm	50.9	73.5°	73.5°	54.0	41.2	4.2	7.2	97.1
54 cm	52.9	73.5°	73.5°	54.0	41.2	4.2	7.2	97.3
56 cm	54.9	73.5°	73.5°	55.5	41.2	4.2	7.2	97.6
58 cm	56.9	73.5°	74.0°	57.0	41.2	4.2	7.2	99.7
60 cm	58.9	73.5°	74.0°	58.0	41.2	4.2	7.2	100.6
62 cm	60.9	73.5°	74.0°	59.0	41.2	4.2	7.2	101.6

All dimensions are in centimeters, unless otherwise stated.

MODEL 560—PRO SERIES

FRAME

Main Tubes: Reynolds 531
Double Butted
Fork: Tange Chrome-Moly
Stays: Tapered Chrome-Moly
Headset: Hatta Vesta
B.B. Shell: Trek Investment Cast

Headlug: Trek Investment Cast
Seat Lug: Trek Investment Cast
Dropouts: Trek Investment Cast
Special Braze-Ons: Top Tube Guides, Pump Peg, Dual Water Bottle Mounts, Chain Hanger, Shift Lever Bosses
Sizes: 19, 21, 22.5, 24, 25.5"
Colors: Crimson/Yellow; Yellow and White Fade

COMPONENTS

Crank: Shimano N-600 Forged Alloy, w/Bio Pace 52/42
Derailleurs: Shimano N-600 Front, Shimano New 600 for SIS Rear
Shift Levers: Shimano New 600 w/SIS
Freewheel: Shimano Z-012 13-24 6 spd. Silver

Chain: Sedisport
Brakes: Shimano N-600 w/Recess and Aero Hooded Levers
Pedals: Shimano N-600 Aero Alloy
Bar: SR Custom Alloy
Stem: SR Custom Alloy
Hubs: Sansin Forged QR w/Sealed Mech.
Spokes: Stainless Steel

Rims: Matrix Titan Hard Anodized 700C
Tires: Specialized 700x20C Smooth Tread
Seat Post: SR CRE-100 Forged Alloy
Saddle: San Marco Aero Suede
Extra: Blackburn Pro Cage and Bottle, Saddle Cover, Shimano Toe Clips and Nylon Straps
Weight: 23.2 lbs.

MODEL 760—PRO SERIES

FRAME

Main Tubes: Reynolds 531
Double Butted
Fork: Reynolds 531 w/Trek Investment Cast Crown and Plated Ends
Stays: Reynolds 531 Tapered
Headset: Hatta Vesta Sealed

B.B. Shell: Trek Investment Cast
Headlug: Trek Investment Cast
Seat Lug: Trek Investment Cast
Dropouts: Trek Investment Cast and Plated
Special Braze-Ons: Top Tube Guides, Pump Peg, Dual Water Bottle Mounts, Chain Hanger, Shift Lever Bosses
Sizes: 19, 21, 22.5, 24, 25.5"

Colors: Race Green/Lavender; Blue and White Fade

COMPONENTS

Crank: Specialized Racing Forged Alloy 52/42
Derailleurs: Suntour Superbe Pro Grey Anodized
Shift Levers: Suntour Sprint Light-Friction

Freewheel: Suntour NW 13-21 6 spd.
Chain: Sedisport
Brakes: DiaCompe Royal Compe 400 Grey w/Hooded Aero Levers
Pedals: Specialized Racing
Bar: SR Custom Alloy
Stem: Specialized S-2 Aero Alloy
Hubs: Specialized Sealed w/QR
Spokes: Stainless Steel

Rims: Matrix Titan Hard Anodized 700C
Tires: Specialized 700x20C Smooth Tread
Seat Post: SR CRE-100 Forged Alloy
Saddle: San Marco America
Extra: Toe Clips and Straps, Blackburn Pro Cage and Bottle, Saddle Cover
Weight: 22.3 lbs.

MODEL 770—PRO SERIES**FRAME**

Main Tubes: Reynolds 531
 Double Butted
 Fork: Reynolds 531 w/Trek Investment
 Cast Crown and Plated Ends
 Stays: Reynolds 531 Tapered
 Headset: Campagnolo Super Record

B.B. Shell: Trek Investment Cast
 Headlug: Trek Investment Cast
 Seat Lug: Trek Investment Cast
 Dropouts: Trek Investment Cast
 and Plated
 Special Braze-Ons: Top Tube Guides,
 Pump Peg, Dual Water Bottle Mounts,
 Chain Hanger, Shift Lever Bosses
 Sizes: 50, 52, 54, 56, 58, 60 and 62 cm

Colors: Race Yellow/Blue; Pink and
 White Fade

COMPONENTS

Crank: Campagnolo Super Record
 Forged Alloy 53/42
 Derailleurs: Campagnolo Super Record
 Shift Levers: Campagnolo
 Super Record
 Freewheel: Suntour NW 13-21 6 spd.

Chain: Sedisport
 Brakes: Campagnolo Super Record
 Pedals: Campagnolo SL Black
 Bar: Cinelli Giro Alloy
 Stem: Cinelli I/A Alloy
 Hubs: Campagnolo Super Record
 32 Hole
 Spokes: Stainless Steel
 Rims: Matrix ISO 32 Hole

Tires: Wolber Neo-Pro 260g
 Seat Post: Campagnolo Super
 Saddle: San Marco America
 Extra: Toe Clips and Straps, B
 Pro Cage and Bottle, Saddle
 Weight: 20.1 lbs.

MODEL 500—TRI SERIES**FRAME**

Main Tubes: Reynolds 531
 Double Butted
 Fork: Tange Chrome-Moly
 w/CCL Crown
 Stays: Tapered Chrome-Moly
 Headset: Hatta Vesta

B.B. Shell: Nikko Special
 Headlug: Trek Investment Cast
 Seat Lug: Trek Investment Cast
 Dropouts: Trek Investment Cast
 Special Braze-Ons: Top Tube Guides,
 Pump Peg, Dual Water Bottle Mounts,
 Chain Hanger, Shift Lever Bosses
 Sizes: 18, 19, 21, 22.5, 24, 25.5"

Colors: Pewter Metallic/Black; Red
 and White Fade

COMPONENTS

Crank: SR FXC-200 Forged Alloy
 52/40 w/Black Anodized Chainwheels
 Derailleurs: Shimano N-600 Front
 and Rear
 Shift Levers: Shimano Braze-On

Freewheel: Shimano Z-012 14-28
 6 spd. Silver
 Chain: Shimano Uniglide
 Brakes: Shimano Z-570 w/QR, Guides
 and Black w/Hooded Levers
 Pedals: SR SP-100 Alloy Quill Black
 Bar: SR Custom Alloy
 Stem: SR Custom Alloy
 Hubs: Maillard New 600 QR w/Sealed
 Mech.

Spokes: Stainless Steel
 Rims: Rigidia 13-20 700C Bla
 Anodized Alloy
 Tires: SBI 700x25C Skinwall
 Seat Post: SR P5-E Laprade 7
 Forged Alloy
 Saddle: San Marco Aero Sue
 Extra: Toe Clips and Straps
 Weight: 23.4 lbs.

MODEL 700—TRI SERIES**FRAME**

Main Tubes: Reynolds 531
 Double Butted
 Fork: Reynolds 531 w/Trek Investment
 Cast Crown and Plated Ends
 Stays: Reynolds 531 Tapered
 Headset: Hatta Vesta Sealed

B.B. Shell: Trek Investment Cast
 Headlug: Trek Investment Cast
 Seat Lug: Trek Investment Cast
 Dropouts: Trek Investment Cast
 and Plated
 Special Braze-Ons: Top Tube Guides,
 Pump Peg, Dual Water Bottle Mounts,
 Chain Hanger, Shift Lever Bosses
 Sizes: 19, 21, 22.5, 24, 25.5"

Colors: Race Blue/White; Black and
 White Fade

COMPONENTS

Crank: Shimano N-600 Forged
 Alloy 52/42
 Derailleurs: Shimano New 600 Grey Frt.
 Shimano New 600 for SIS Rear
 Shift Levers: Shimano New 600 w/SIS

Freewheel: Shimano Z-012 14-28
 6 spd. Silver
 Chain: Sedisport
 Brakes: Shimano N-600 Grey Anodized
 and Hooded Levers
 Pedals: Shimano N-600
 Bar: SR Custom Alloy
 Stem: Specialized S-2 Aero Alloy
 Hubs: Specialized Sealed w/QR

Spokes: Stainless Steel
 Rims: Matrix Titan Hard Anodize
 Tires: Specialized 700x25C S
 Seat Post: SR CRE-100 Forge
 Saddle: SBI Delta White Leath
 Extra: Shimano Toe Clips and
 Blackburn Pro Cage and Bottl
 Weight: 23.1 lbs.

that each of our lightweight

E L A N C E 3 0 0

This all-around 12-speed sport-geometry bike is made to Trek's stringent specifications showcasing components from some of the most famous names in international cycling. The frame is built from Ishiwata triple-butted chrome-molybdenum alloy with tapered stays and chrome-moly fork. Componentry includes Shimano light-action derailleurs, SR forged alloy crankset and Dia-Compe Q500 sidepulls. And the Selle Italia anatomical saddle is comfortable from the very first mile. Araya alloy wheels built around Sansin sealed quick-release hubs round out this terrific Trek value. Weight: 24.5 lbs.



Colors: steel gray metallic/
silver; blue metallic/silver.

E L A N C E 3 1 0

Another quick-handling and comfortable Trek designed Ishiwata tri-butted frame, with extra braze-ons for clean mounting of two water-bottles, shift levers, and pump. Derailleurs here are SunTour's precise and easy-shifting Cyclone series linked to a wide-ratio SunTour freewheel in the rear. Together with SR's SAC forged alloy crank and 52/42 teeth chainrings, this combination yields a 12-speed gear range for everything from steady climbing to fast descending. The Dia-Compe GX500N brakeset is designed for controlled, well-modulated braking, with hooded levers for comfort. Weight: 24.2 lbs.

Colors: steel gray metallic/
silver, scarlet/white.



E L A N C E 4 0 0

Built by Trek in Waterloo, Wisconsin using a combination of advanced robotic technology and precision silver brazing. Main tubes are double-butteted Reynolds 531, fork and stays are chrome-moly, and lugs are Trek's tolerance investment cast design. Well-matched components include the Shimano S.I.S. derailleur shifting system, previously found on only the costliest racing machines, which ensure perfect gear engagement every time. Shimano Z-series brakes and SR forged SX crankset complete this group. Weight: 23.6 lbs.

Colors: dark blue metallic/
silver, black metallic/silver.



E L A N C E 4 0 0 T

The same high-performance Reynolds 531 sport-geometry frame, but with a component selection geared towards more varied terrain. 15 evenly-spaced speeds are the result of an SR forged alloy triple crankset and Shimano 14-28 tooth freewheel, controlled via Shimano's new Lite-Action™ shift levers and long-cage rear derailleur. A pair of Rigida 700C lightweight alloy wheels make this Trek easy to accelerate, yet will still shoulder the additional load should you decide to add a rack and pack. An anatomically-contoured Specialized saddle is also standard equipment on this versatile machine. Weight: 23.8 lbs.

Colors: dark blue metallic/
silver; black metallic/silver



C I R R U S 5 2 0

This high-performance 15-speed sport touring bike combines the best features of our versatile medium-wheelbase sport machines and our longer-wheelbase high-capacity touring designs. Triple crankset is Shimano's EX forged alloy, complete with elliptically-shaped Bio-Pace™ chainrings that have been computer-modeled to provide a smoother, more efficient pedal stroke. Shimano N-600 brakes put plenty of stopping power at your fingertips, even with heavy panniers. Wheel componentry consists of Gyromaster cold-forged sealed hubs with Matrix rims and Specialized tires. Weight: 24.7 lbs.



Colors: grey metallic/red.

FRAME GEOMETRY FOR MODELS 400D, 400T, 500, 520, 700

FRAME SIZE	A	B	C	D	E	F	G	H
	SEAT TUBE length	SEAT TUBE angle	HEAD TUBE angle	TOP TUBE length	CHAIN STAY length	FORK OFFSET	DROP	WHEEL BASE
18"	44.0	76°	71°	49.5	42.5	4.5	7.2	99.0
19"	47.5	73.5°	72.0°	53.6	42.5	4.5	7.2	99.4
21"	52.1	73.5°	72.0°	55.0	42.5	4.5	7.2	101.1
22.5"	55.9	73.5°	73.0°	56.0	42.5	4.5	7.2	102.0
24"	59.6	73.5°	73.0°	57.5	42.5	4.5	7.2	103.4
25.5"	63.5	73.5°	73.0°	58.5	42.5	4.5	7.2	105.0

All dimensions are in centimeters, unless otherwise stated. *18" size available for models 400D, 400T, 500 and 520 only.

MODEL 300—ELANCE

FRAME

Main Tubes: Ishiwata Tri-Butted Chrome-Moly
 Fork: Ishiwata Chrome-Moly w/Semi Sloping Crown
 Stays: Special Tapered
 Headset: Diamond Road

B.B. Shell: Bulge Formed
 Headlug: Italian Style Cut
 Seat Lug: Italian Style Cut
 Dropouts: Suntour GT-IV Forged
 Special Braze-Ons: Top Tube Guides, Water Bottle Mounts, B.B. Cable Guides, Chain Hanger
 Sizes: 19, 21, 23, and 25"

Colors: Steel Grey/Silver; Blue Metallic/Silver

COMPONENTS

Crank: SR SAC-T310 Forged Alloy 52/40
 Derailleurs: Shimano Z-204 Front, Shimano L523SS Light-Action Rear
 Shift Levers: Shimano L-422
 Freewheel: Shimano Z-012 14-28 6 spd. Silver

FRAME GEOMETRY FOR MODELS 300, 310

FRAME SIZE	A	B	C	D	E	F	G	H
	SEAT TUBE length	SEAT TUBE angle	HEAD TUBE angle	TOP TUBE length	CHAIN STAY length	FORK OFFSET	DROP	WHEEL BASE
19"	48.5	73.5°	72.0°	53.5	42.5	5.0	4.2	100.8
21"	53.5	73.5°	72.5°	54.5	42.5	5.0	6.2	100.2
23"	58.5	73.5°	73.5°	56.0	42.5	5.0	6.2	101.9
25"	63.5	73.5°	72.5°	58.0	42.5	5.0	6.2	102.9

All dimensions are in centimeters, unless otherwise stated.

Chain: Shimano Uniglide
 Brakes: DiaCompe Q500N w/Hooded Levers
 Pedals: SR SP-250 Alloy Quill
 Bar: SR CTD Alloy
 Stem: SR Custom Alloy
 Hubs: Sansin QR w/Sealed Mech.
 Spokes: UCP 14 g.
 Rims: Araya 18A 27" Alloy

Tires: IRC 27" x 1 1/8"
 Seat Post: SR P5-E Laprade Type Forged Alloy
 Saddle: Selle Italia Anatomical Extra: SR Toe Clips and Straps
 Weight: 24.5 lbs.

MODEL 310—ELANCE

FRAME

Main Tubes: Ishiwata Tri-Butted Chrome-Moly
 Fork: Ishiwata Chrome-Moly w/Semi Sloping Crown
 Stays: Special Tapered
 Headset: NIKYO 75

B.B. Shell: Bulge Formed
 Headlug: Italian Style Cut
 Seat Lug: Italian Style Cut
 Dropouts: Suntour GT-IV Forged
 Special Braze-Ons: Top Tube Guides, Pump Peg, Dual Water Bottle Mounts, B.B. Cable Guides, Braze-On Lever Mounts, Chain Hanger
 Sizes: 19, 21, 23 and 25"

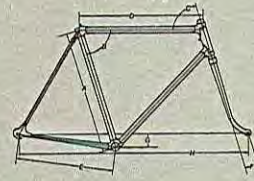
Colors: Steel Grey/Silver; Scarlet/White

COMPONENTS

Crank: SR SAC-310 Forged Alloy 52/40
 Derailleurs: Suntour LP Front and New Cyclone Rear
 Shift Levers: Suntour Braze-On Mount
 Freewheel: Suntour PT 14x28 6 spd.
 Chain Brakes: D.I.D. Silver and Black DiaCompe GX500N w/Hooded Levers

Pedals: SR SP-250 Aero Quill
 Bar: SR CT Alloy
 Stem: SR Custom Alloy
 Hubs: Sansin QR w/Sealed Mech.
 Spokes: Stainless Steel
 Rims: Araya 20A 27" x 1" Alloy
 Tires: IRC 27" x 1"
 Seat Post: SR P5-E Laprade Type Forged Alloy

Saddle: Selle Italia Anatomical Extra: Nylon Toe Clips and Straps
 Weight: 24.2 lbs.



MODEL 400 DOUBLE— ELANCE

FRAME

Main Tubes: Reynolds 531
Double Butted
Fork: Tange Chrome-Moly
Stays: Tapered Chrome-Moly
Headset: Hatta Vesta

B.B. Shell: Nikko Special
Headlug: Trek Investment Cast
Seat Lug: Trek Investment Cast
Dropouts: Trek Investment Cast
Special Braze-Ons: Top Tube Guides,
Pump Peg, Dual Water Bottle Mounts,
Rear Rack Mounts, Chain Hanger,
Shift Lever Bosses
Sizes: 18, 19, 21, 22.5, 24, 25.5"

Colors: Dark Blue Metallic/Silver; Black
Metallic/Silver

COMPONENTS

Crank: SR SXC-200 Forged Alloy 52/40
Derailleurs: Shimano Z-206 Front,
Shimano L-525SS Light-Action Rear
Shift Levers: Shimano S-424 w/SIS
Freewheel: Shimano Z-012 14-28
6 spd. Silver

Chain: Shimano Uniglide
Brakes: Shimano Z-570 w/QR, Guides
and Hooded Levers
Pedals: SR SP-150SE Alloy Quill
Bar: SR Custom Alloy
Stem: SR Custom Alloy
Hubs: Maillard New 600 QR
w/Sealed Mech.

Spokes: Stainless Steel
Rims: Rigida 13-20 700C Black
Anodized Alloy
Tires: SBI 700x25C Skinwall
Seat Post: SR P5-E Laprade Type
Forged Alloy
Saddle: SBI Lambda Ultra-Suede
Extra: Toe Clips and Straps
Weight: 23.6 lbs.

MODEL 400 TRIPLE— ELANCE

FRAME

Main Tubes: Reynolds 531
Double Butted
Fork: Tange Chrome-Moly
Stays: Tapered Chrome-Moly
Headset: Hatta Vesta

B.B. Shell: Nikko Special
Headlug: Trek Investment Cast
Seat Lug: Trek Investment Cast
Dropouts: Trek Investment Cast
Special Braze-Ons: Top Tube Guides,
Pump Peg, Dual Water Bottle Mounts,
Rear Rack Mounts, Chain Hanger,
Shift Lever Bosses
Sizes: 18, 19, 21, 22.5, 24, 25.5"

Colors: Dark Blue Metallic/Silver; Black
Metallic/Silver

COMPONENTS

Crank: SR SXC-T310 Forged Alloy
50/45/32
Derailleurs: Shimano Z-206 Front,
Shimano L-525GS Light-Action Rear
Shift Levers: Shimano L-422 Braze-On

Freewheel: Shimano Z-012 14-28
5 spd. Silver
Chain: Shimano Uniglide
Brakes: Shimano Z-570 w/QR, Guides
and Hooded Levers
Pedals: SR SP-150SE Alloy Quill
Bar: SR Custom Alloy
Stem: SR Custom Alloy
Hubs: Maillard New 600 QR
w/Sealed Mech.

Spokes: Stainless Steel
Rims: Rigida 13-20 700C Alloy
Tires: SBI 700x25C Skinwall
Seat Post: SR P5-E Laprade Type
Forged Alloy
Saddle: SBI Lambda Ultra-Suede
Extra: Toe Clips and Straps
Weight: 23.8 lbs.

MODEL 520—CIRRUS

FRAME

Main Tubes: Reynolds 531
Double Butted
Fork: Tange Chrome-Moly
w/CCL Crown
Stays: Tapered Chrome-Moly
Headset: Hatta Vesta

B.B. Shell: Trek Investment Cast
Headlug: Trek Investment Cast
Seat Lug: Trek Investment Cast
Dropouts: Trek Investment Cast
Special Braze-Ons: Top Tube Guides,
Pump Peg, Dual Water Bottle Mounts,
Rear Rack Mounts, Chain Hanger,
Shift Lever Bosses
Sizes: 18, 19, 21, 22.5, 24, 25.5"

Colors: Grey Metallic/Red

COMPONENTS

Crank: Shimano 6208 Forged Alloy
w/Bio Pace 50/44/28
Derailleurs: Shimano N-600 Front,
N-600GS Rear
Shift Levers: Shimano SL-408 Braze-On
Freewheel: Shimano Z-012 14-28
5 spd. Silver

Chain: Shimano Uniglide
Brakes: Shimano N-600
w/Hooded Levers
Pedals: SR SP-100 Alloy Quill Black
Bar: SR Custom Alloy
Stem: SR Custom Alloy
Hubs: Sansin Forged QR
w/Sealed Mech.
Spokes: Stainless Steel

Rims: Rigida 13-20 700C Black
Anodized Alloy
Tires: SBI 700x28C Skinwall
Seat Post: SR CRE-100 Forged Alloy
Saddle: SBI Lambda Suede
Extra: Blackburn Alloy Rear Rack,
Toe Clips and Straps
Weight: 24.7 lbs.

ANTELOPE 850

an all new look at all-terrain
in this special lightweight
-butted chrome-moly frame
welded into a lean and stiff MTB
geometry. Other equipment is equally
to the demanding off-road
ment, including Specialized
36/26 triple crankset, SunTour XC
port derailleurs, shiftlevers, stem,
and hubs and innovative XC "roller
arm" rear brake mounted behind the
bottom bracket. MKS Grafight 2000
pedals can take the pressure and their
composite "bear claw" cage offers a
non-slip grip for your feet. Weight:
28.1 lbs.

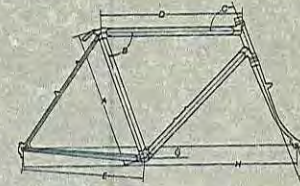


Colors: tamarack, pink and
white fade.

FRAME GEOMETRY
FOR MODELS 830, 850

	A	B	C	D	E	F	G	H
FRAME TUBE length	SEAT TUBE length	SEAT TUBE angle	HEAD TUBE angle	TOP TUBE length	CHAIN STAY length	FORK OFFSET	DROP	WHEEL BASE
18"	45.7	70.0°	70.0°	57.7	44.5	5.1	3.8	106.1
20"	50.8	71.0°	70.0°	58.2	44.5	5.1	3.8	107.6
22"	55.9	72.0°	70.0°	58.2	44.5	5.1	3.8	109.2

All dimensions are in centimeters, unless otherwise stated.



MODEL 830—ANTELOPE

FRAME

Main Tubes: MTB Double-Butted Chrome-Moly
Fork: Chrome-Moly w/Unicrown
Stays: MTB Chrome-Moly
Headset: Tange SE-2 Sealed
B.B. Shell: Lugless Welded

Headlug: Lugless Welded
Seat Lug: Lugless Welded
Dropouts: Forged Vertical
Special Braze-Ons: Top Tube Guides, Dual Water Bottle Mounts, Cable Stops, Rear Rack Mounts, Chain Hanger, Fork Rack Mounts
Sizes: 18, 20 and 22"
Colors: Bright Red; Black Metallic

COMPONENTS

Crank: SR FXC-T310 Forged Alloy, 46/36/26
Derailleurs: Shimano FD-AL11GS Front, Shimano L525SGS Rear
Shift Levers: Shimano AT-50
Freewheel: Shimano MF Z-012, 14x32 5 spd.
Chain: Shimano Uniglide

Brakes: Shimano AT-50, Cantilevers w/Mountain Levers
Pedals: SR SP-452 Oval MTB
Bar: SR AR-115 Stainless Steel
Stem: SR CPS-80 Forged Alloy
Hubs: SR-CRH 310 w/Sealed Mech. and QR Front
Spokes: Stainless Steel
Rims: Araya 7XN 26x1.5 Alloy

Tires: Off Road Skinwall 26x1.95"
Seat Post: SR P5-E Laprade Ty. Forged Alloy
Saddle: Vetta Maxi Suede
Extra: QR Seat Post Binder
Weight: 28.9 lbs.

MODEL 850—ANTELOPE

FRAME

Main Tubes: Special Lightweight MTB Double-Butted Chrome-Moly
Fork: Chrome-Moly w/Unicrown
Stays: MTB Chrome-Moly
Headset: Tange Falcon Sealed MTB
B.B. Shell: Lugless Welded

Headlug: Lugless Welded
Seat Lug: Lugless Welded
Dropouts: Forged Vertical
Special Braze-Ons: Top Tube Guides, Dual Water Bottle Mounts, Cable Stops, Rear Rack Mounts, Chain Hanger, Fork Rack Mounts
Sizes: 18, 20, and 22"

Colors: Tamarack Green; Pink and White Fade

COMPONENTS

Crank: Specialized Forged Alloy, 46/36/26
Derailleurs: Suntour XC Sport
Shift Levers: Suntour XC Sport
Freewheel: Shimano 600 MF, 14x32 5 spd.

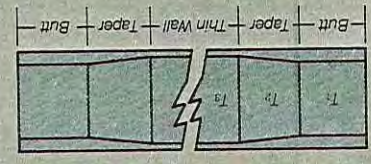
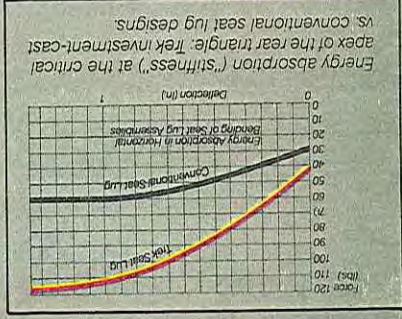
Chain: Shimano Uniglide
Brakes: Shimano XT Cantilever Ft./Suntour XC Sport rear w/DiaCompe 280 MTB Levers
Pedals: MKS Graight 2000RR Oval MTB
Bar: Kusuki MTB Alloy
Stem: Suntour XC
Hubs: Suntour XC Sealed w/QR Front
Spokes: Stainless Steel

Rims: Araya RM-20 26x1.5 Alloy
Tires: Trek Special Off-Road 26x1.95"
Seat Post: SR P5 Laprade Forged Alloy
Saddle: Vetta Maxi Leather
Extra: Suntour QR Binder
Weight: 28.1 lbs.

Trek bicycles consist of component parts and materials made by Trek or purchased from sources around the world. Changes in customer demand or availability occasionally necessitate temporary or permanent substitution of parts specified. If substitution is made, the new parts will be of comparable or superior quality and performance to those originally specified. Every Trek bicycle is equipped with safety reflectors required by law. All specifications are subject to change without notice.

Trek Bicycle Corporation, American Technology in Bicycles and Framesets™ 801 W. Madison Street, P.O. Box 183, Waterloo, Wisconsin 53594 Phone 414-478-2191, Telex 26-0163 TREK WALO © 1986 Trek Bicycle Corporation

tolerances as close as .001!"
 Their distinctive design also means a greater "wetter" contact area for the brazing material (increasing the overall strength of the joint), and superior stiffness in critical areas such as the rear triangle.
 When used in conjunction with acclaimed Reynolds 531 seamless drawn double-butted tubing, Trek investment castings



The double-butting Trek specities on their Reynolds tubeseis increases a frames' strength at the ends where it is subject to greatest stress.

TUBING WALL THICKNESS (in mm)

Top Tube	T ₁	T ₂	T ₃	T ₄	T ₅	T ₆	T ₇	T ₈
Down Tube	T ₁	T ₂	T ₃	T ₄	T ₅	T ₆	T ₇	T ₈
Seat Tube	T ₁	T ₂	T ₃	T ₄	T ₅	T ₆	T ₇	T ₈
Reynolds 753 R	0.7	0.5	0.7	0.8	0.6	0.8	0.7	0.5
Reynolds 531 and 531C	0.8	0.5	0.8	1.0	0.7	1.0	0.8	0.5
Ishwata EX	0.9	0.6	0.7	0.9	0.6	0.7	0.9	0.6
Trek Cromo MTB	1.0	0.7	1.0	1.2	0.9	1.2	1.2	0.9

ensure that each of our lightweight frames will be silver-brazed into a rigidly unitized geometry, aligned to perfection.
NO MASTER FRAMEBUILDER HAS A STEADIER HAND.
 In the past, framebuilders have spent long hours with an acetylene torch in pursuit of the perfect bicycle frame. Now Trek unveils an advanced new method of framebuilding that rivals the consistency of the best custom builder.
 Trek's R.I.B. (Robotic Induction Brazing) System is the result of years of Trek framebuilding mastery combined with the latest computer-driven technologies.



FRAME MATERIAL YIELD STRENGTHS (PSI)

