

THE FUTURE OF CYCLING
cannondale 1986



FASTER, MORE EFFICIENT

A bicycle frame's stiffness is the most important factor in its performance. A stiffer frame means more of your energy is being used to drive the bicycle, and less is being wasted flexing the frame. A stiff bicycle will help you sprint faster, climb hills more easily, and use less effort so you can ride farther and enjoy it more.

We create remarkably stiff bicycle frames that virtually eliminate wasteful frame flex by utilizing the greater stiffness inherent in Cannondale's larger diameter tubing. Cannondale bicycles are far stiffer than conventional steel and small diameter aluminum bicycles. The harder you ride, the more you will appreciate Cannondale aluminum.

STRONGER, LIGHTER

We have also increased the thickness of the tubing wall to give Cannondale bicycle frames superior strength. While strength does not actually affect the day to day performance of your bicycle, it is a comfort to know that no bicycle is built stronger than a Cannondale. And because Cannondale frames are aluminum, they actually weigh about a half pound less than most other frames.

MORE COMFORTABLE

Our large diameter aluminum tubing dampens road shock better than steel tubing. You don't have to put up with the bone-jarring punishment that goes hand-in-hand with a stiff steel bicycle. Cannondale bicycles soften bumps and hug the road, giving you a steady, comfortable ride even on rough surfaces.



Cannondale craftsmen engrave their initials in the dropout of each frame they weld.

PERFORMANCE GEOMETRY

All Cannondale bicycle frames are built with geometry chosen specifically for each bicycle's intended use. This function specific design is enhanced with proportional geometry to assure you of a correct fit.

All our small size frames feature a unique intersecting top and down tube construction, which allows us to build these frames with the same attention to proportional sizing and function specific design that we give our larger bicycles. With this design, shorter cyclists no longer have to compromise performance to get a bicycle that fits.

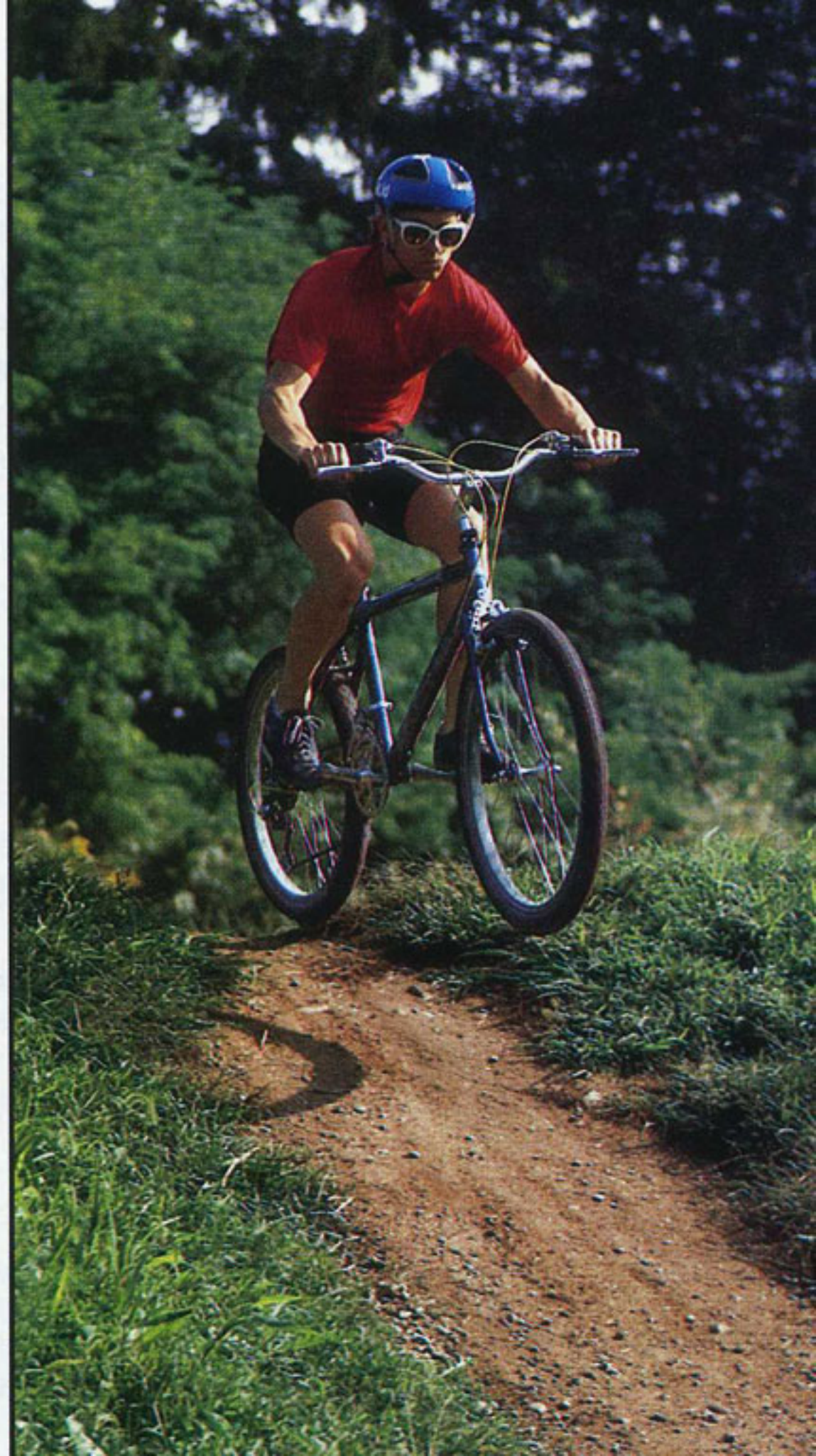
PATENTED DESIGN

All Cannondale bicycles feature our patented Optimum Oval™ seatstays (US# 4513985), which increase rear triangle stiffness for a more stable and efficient ride.

Our offset seat tube design (patent pending) allows us to shorten the chainstays on Cannondale racing bicycles, tightening the wheelbase and also creating a more rigid rear triangle. By effectively shortening the down tube, our offset seat tube also adds to the overall stiffness of the frame.

*Action photography by Bruce M. Alexander.
Studio photography by Karen Heerlein.*

Our all-terrain bikes feature geometry chosen specifically to tackle rough terrain. Function specific design is standard on all Cannondale bicycles.



SATISFACTION GUARANTEED

We are sure that Cannondale bicycles are the finest bicycles in the world. That's why we confidently offer the best guarantee in the industry. Cannondale bicycles, like all Cannondale products, are covered with our 100% guarantee of satisfaction. If you are ever dissatisfied with your Cannondale bicycle, we will repair or replace it free of charge. We also offer an exclusive frame replacement policy. If you damage your Cannondale frame, we will send you a new one for just \$150 and the return of your damaged frame. (\$200 for *Alumina Classic* Frame replacement.)

CALL OUR TOLL-FREE HOTLINE: 1 800 BIKE USA

Communication with our customers has always been the most important component in Cannondale's customer service. Our toll-free phone number is your direct line to Cannondale. Give us a call to find the location of your local authorized Cannondale bicycle dealer, or if you have questions or comments about Cannondale bicycles or any Cannondale product. (In Connecticut or outside the continental USA, please call 1 (203) 838-4488.)

Prices, specifications and colors are subject to change without notice. If the proposed tariff bill (H.R. 2226) is passed there will be an increase in the cost of components and subsequently an increase in the retail prices of bicycles.

©1985 Cannondale Corporation, 9 Brookside Place, Georgetown, CT 06829

CANNONDALE FRAMESETS

All Cannondale models are available as framesets as well as complete bicycles. Cannondale framesets come with headset, fork, front derailleur, and color accessory package which includes saddle, cable housings, handlebar tape and brake hoods.

FRAME SPECIFICATIONS: *Racing**

Size	48	50	53	54.5	56
Seat Tube Angle	77°	75.7°	74.4°	74°	73.7°
Head Tube Angle	72°	72.8°	73°	73°	73°
Top Tube Length	20.1	21.1	21.8	21.9	22
Chainstay Length	15.75	15.75	15.75	15.75	15.75
Fork Rake	1.75	1.625	1.5	1.5	1.5
Bottom Bracket Height	10.75	10.75	10.75	10.75	10.75
Wheelbase	38.8	38.9	38.9	38.9	38.9
Trail	2.5	2.5	2.5	2.5	2.5
Ground to Top of Top Tube	28.3	29.6	30.6	31.3	31.9

ALUMINA CLASSIC FRAMESETS

New this year from Cannondale is the *Alumina Classic* series of specially hand-finished framesets that have the elegant appearance of a custom built bicycle. Look for the *Alumina Classic* Frame on the SR1000, SR900, SR800, and ST800 model bicycles. These bicycles and framesets will only be available in limited quantities in 1986.

THE FINEST COMPONENTS

We're proud of Cannondale bicycle frames, so we won't put just any components on them. We select each component package carefully to complement the bicycle's intended use, always maintaining our high standards of function, durability, style and value.

			<i>Touring</i>					<i>All-Terrain</i>				<i>Town and Country</i>			
58	60	63	19	21	23	25	27	16	18†	20†	22†	16	18	20	22
73.1°	73°	73°	76.7°	73.5°	73.5°	73.5°	73.5°	73.5°	73.5°	73.5°	73.5°	73.5°	73.5°	73.5°	73.5°
73°	73°	73.5°	72°	72°	72°	72°	72°	68°	69.5°	69.5°	69.5°	71°	71°	71°	71°
22.1	22.3	23.1	20.3	21.75	22.25	23.25	24.25	21.5	22.5	23.25	24.25	20	21.5	22.25	23.25
15.75	15.75	15.75	18	18	18	18	18	17.5	18.5	18.5	18.5	18.5	18.5	18.5	18.5
1.5	1.5	1.38	2.125	2.125	2.125	2.125	2.125	1.75	1.75	1.75	1.75	2	2	2	2
10.75	10.75	10.75	10.2	10.3	10.44	10.52	10.63	12.75	13	13	13	10.63	10.63	10.63	10.63
38.8	39	39.5	41.1	41.3	41.6	42.7	44	42.8	43.2	44.1	45.2	40.9	41.9	42.8	43.9
2.5	2.5	2.5	2.15	2.15	2.15	2.15	2.15	3	3	3	3	2.36	2.36	2.36	2.36
32.6	33.2	34.5	28.5	30.5	32.5	34.5	36.5	27.1‡	29.2‡	31.1‡	32.9‡	27.3	28.7	30.7	32.7

*Size of racing bicycles measured in cm.

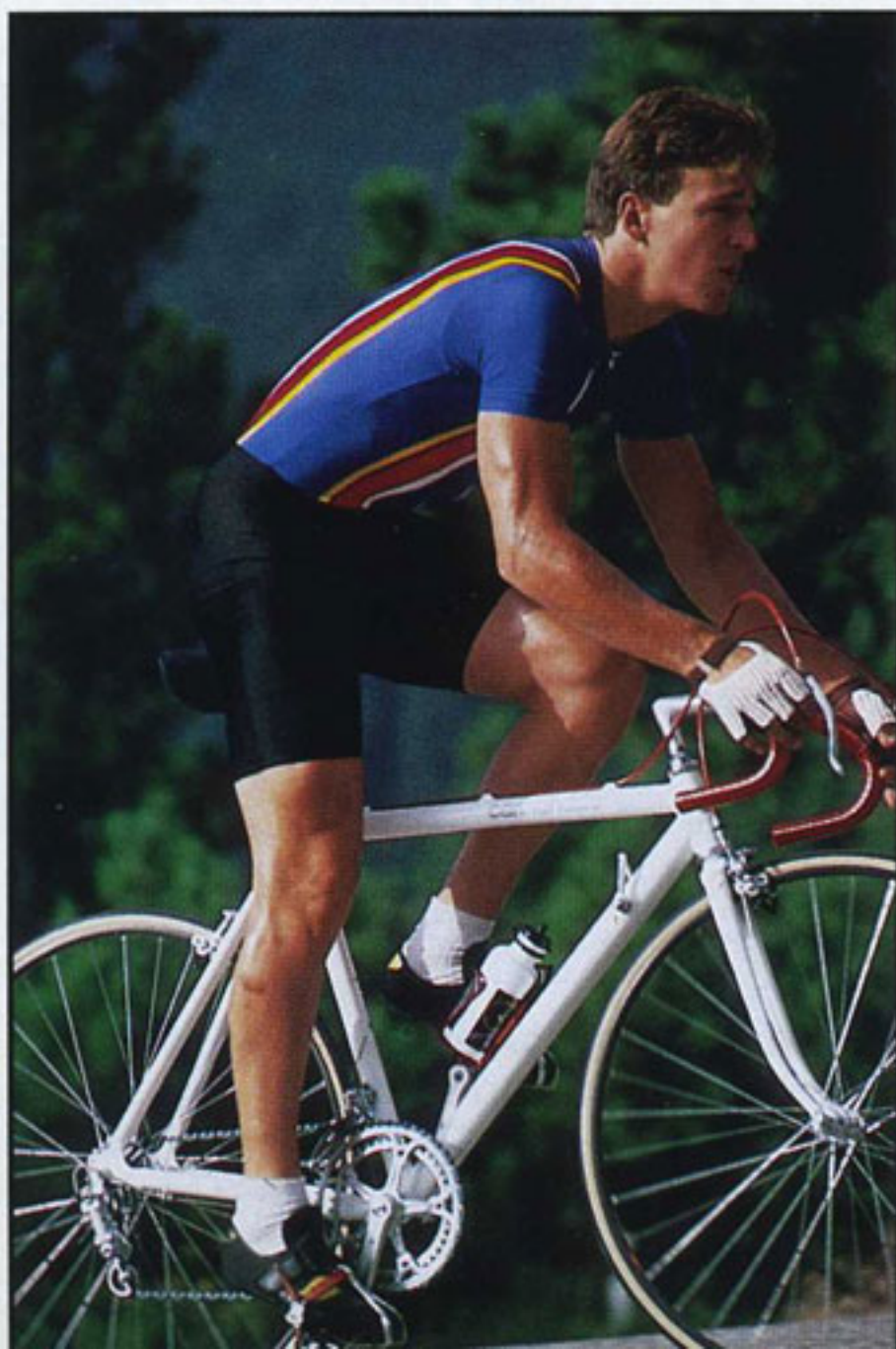
† For dual 26 inch wheels. Specifications will be identical for the SM700 with the 24" rear wheel, but subtract an inch from the chainstays and wheelbase.

‡ Effective height. Actual height would be lower due to sloping top tube.

All Cannondale bicycles are equipped to meet CPSC regulations. Ride smart, always wear a helmet.

RACING—SR1000

For cyclists with a passion for winning. All components work together to produce a harmony of efficiency and speed. The New Dura Ace group offers state of the art bicycle component technology, and enhances the already superior performance of the *Alumina Classic* Racing Frame to produce today's ultimate racing machine.



Davis Phinney, bronze medal winner at the '84 Olympic Games, attacks a hill on his Cannondale racing bike.

COMPONENT SPECIFICATIONS:

RIMS.....	Mavic GP4, 700c, hard anodized, tubular
HUBS	New Dura Ace, 36 hole, sm. fl.
SPOKES.....	15 gauge, stainless steel
TIRES	Wolber Neo Pro
FRONT DERAILLEUR...	New Dura Ace, braze-on type
REAR DERAILLEUR...	New Dura Ace
SHIFTERS.....	New Dura Ace, down tube
CRANKSET.....	New Dura Ace, 42/52
PEDALS.....	New Dura Ace, toe clips and straps
FREEWHEEL.....	Shimano, 13/14/15/17/19/21
BRAKES.....	New Dura Ace
HANDLEBAR.....	TTT Gimondi, criterium bend
STEM	TTT
HEADSET	Dura Ace
SEATPOST	Dura Ace
SADDLE.....	Turbo, white leather
FORK	Tange, chrome-moly
COLORS	Ice Blue
SIZES (cm)	48, 50, 53, 54.5, 56, 58, 60, 63
WEIGHT (lbs)	20.25
FRAMESET RETAIL ...	\$499.95
BICYCLE RETAIL.....	\$1299.95

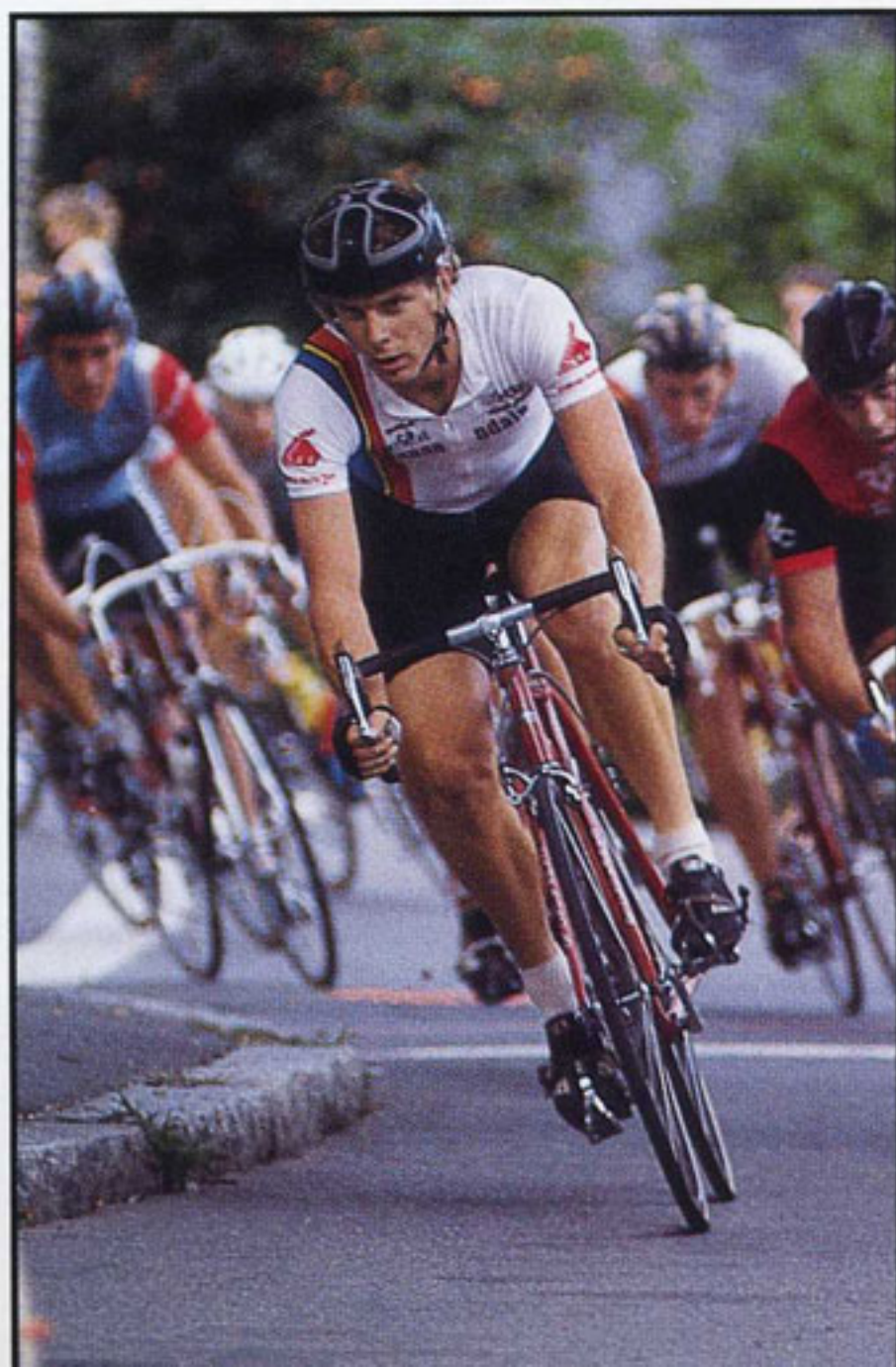
FITTINGS: Cable guides, down tube shifter bosses, front derailleur bracket, chain hanger, two sets of bottle bosses, and a pump peg on appropriate sizes.

SR1000



RACING—SR900

A bicycle steeped in winning tradition. The Campagnolo Nuovo/Super Record groupo, Mavic GP4 tubular rims, and TTT bars and stem give the *Alumina Classic* Racing Frame-set European style and performance proven in the world's most prestigious bicycle races.



Cannondale racing team captain, Kit Flagg, on his SR900 at the Salem Witches Cup criterium.

COMPONENT SPECIFICATIONS:

RIMS.....	Mavic GP4, 700c, hard-anodized, tubular
HUBS	Campagnolo Nuovo Record, 36 hole, sm. fl.
SPOKES.....	15 gauge, stainless steel
TIRES	Wolber Neo Pro
FRONT DERAILLEUR...	Campagnolo Nuovo Record, braze-on type
REAR DERAILLEUR...	Campagnolo Nuovo Record
SHIFTERS.....	Campagnolo Nuovo Record, down tube
CRANKSET.....	Campagnolo Super Record, 42/52
PEDALS.....	Campagnolo SL, toe clips and straps
FREEWHEEL.....	SunTour New Winner, 13/15/17/19/21/24
BRAKES.....	Campagnolo Nuovo Record, recessed allen bolt
HANDLEBAR.....	TTT Tour de France
STEM	TTT
HEADSET	Campagnolo Nuovo Record
SEATPOST	Campagnolo Super Record
SADDLE.....	Cinelli Volare SLX
FORK	Tange, chrome-moly
COLORS	Red
SIZES (cm)	48, 50, 53, 54.5, 56, 58, 60, 63
WEIGHT (lbs)	21.75
FRAMESET RETAIL ...	\$450
BICYCLE RETAIL.....	\$1099.95

FITTINGS: Cable guides, down tube shifter bosses, front derailleur bracket, chain hanger, two sets of bottle bosses, and a pump peg on appropriate sizes.

SR900



RACING—SR800

We've selected color matched SunTour Superbe Pro components that offer a stylish contrast to the *Alumina Classic* Racing Frameset. You get a choice of the vivid coral frame with gray accented components, or the sinister black on black. This special edition SR800 delivers a striking graphic statement in a high performance racing machine.



Cannondale bikes are ridden by many of the swiftest bicycle messengers in the country.

COMPONENT SPECIFICATIONS:

RIMS.....	Mavic GP4, 700c, hard anodized, tubular
HUBS.....	SunTour Superbe Pro, 36 hole, sm. fl.
SPOKES.....	15 gauge, stainless steel
TIRES.....	Wolber Neo Pro
FRONT DERAILLEUR...	SunTour Superbe Pro, braze-on type
REAR DERAILLEUR...	SunTour Superbe Pro
SHIFTERS.....	SunTour Superbe Pro, down tube
CRANKSET.....	SunTour Superbe Pro, 42/52
PEDALS.....	SunTour Superbe Pro, toe clips & straps
FREEWHEEL.....	SunTour New Winner, 13/15/17/19/21/24
BRAKES.....	Dia Compe RGC400 w/AGC 250 aero-levers
HANDLEBAR.....	Nitto Mod. 410
STEM.....	Nitto Technomic
HEADSET.....	SunTour Superbe Pro, alloy
SEATPOST.....	SunTour Superbe Pro
SADDLE.....	Cinelli Volare SLX
FORK.....	Tange, Chrome-moly
COLORS.....	Ebony, Coral
SIZES (cm).....	48, 50, 53, 54.5, 56, 58, 60, 63
WEIGHT (lbs).....	21
FRAMESET RETAIL ...	\$450
BICYCLE RETAIL.....	\$899.95

FITTINGS: Cable guides, down tube shifter bosses, front derailleur bracket, chain hanger, two sets of bottle bosses, and a pump peg on appropriate sizes.

SR800



RACING—SR600/700

The SR600 is a high performance, high value racing bicycle, equipped with SunTour's new Sprint derailleurs and pedals, a Superbe Pro crankset, TTT bars and stem, Dia Compe's top brake set, and Ambrosio Elite 700c clincher wheels. For those who prefer tubular wheels, the SR700 is the same fine bicycle, but with a Mavic GP4 rim/Wolber Neo Pro sew-up tire option for just \$699.95.



The best way to judge the performance of a Cannondale bicycle is to take it for a test ride.

COMPONENT SPECIFICATIONS:

RIMS.....	Ambrosio Elite 700c, alloy or Mavic GP4, hard anodized
HUBS.....	SunTour Cyclone, sealed, 36 hole, sm. fl.
SPOKES.....	15 gauge, stainless steel
TIRES.....	National Panaracer Tri-Sport Kevlar or Wolber Neo Pro
FRONT DERAILLEUR...	SunTour Sprint, braze-on type
REAR DERAILLEUR...	SunTour Sprint
SHIFTERS.....	SunTour Sprint, down tube
CRANKSET.....	SunTour Superbe Pro, 42/52
PEDALS.....	SunTour Sprint, toe clips and straps
FREEWHEEL.....	SunTour New Winner, 13/15/17/19/21/24
BRAKES.....	Dia Compe RGC400 w/AGC 250 aero-levers
HANDLEBAR.....	TTT Tour de France, alloy
STEM.....	TTT
HEADSET.....	Omas Grand Prix, alloy
SEATPOST.....	Sugino SPH
SADDLE.....	Vetta racing, leather
FORK.....	Tange, chrome-moly
COLOR.....	Sea Sprite Green
SIZES (cm).....	48, 50, 53, 54.5, 56, 58, 60, 63
WEIGHT (lbs).....	21
FRAMESET RETAIL ...	\$280
BICYCLE RETAIL.....	\$650/\$699.95

FITTINGS: Cable guides, down tube shifter bosses, front derailleur bracket, chain hanger, two sets of bottle bosses, and pump peg on appropriate sizes.

SR600



RACING—SR500

Sleek styling and functional design have made Shimano 600 components a favorite of triathletes and road racers around the world. We've selected this group as the perfect complement to our SR500 frameset for serious racing cyclists who ride hard and expect top performance from their racing bicycles.

An early morning training ride on a Cannondale along a quiet New England country road.



COMPONENT SPECIFICATIONS:

RIMS.....	Rigida 1320, 700c, alloy
HUBS	Shimano 600, 36 hole, sm. fl., sealed
SPOKES.....	15 gauge, stainless steel
TIRES	National Panaracer, 700c, presta
FRONT DERAILLEUR...	Shimano 600, braze-on type
REAR DERAILLEUR...	Shimano 600
SHIFTERS.....	Shimano 600, down tube
CRANKSET.....	Shimano 600, 42/52
PEDALS.....	Miche 1203, toe clips and straps
FREEWHEEL.....	Shimano 600, 13/15/17/19/21/24
BRAKES.....	Shimano 600, recessed allen bolt
HANDLEBAR.....	Belleri, alloy, Cannondale engraved
STEM	Nitto Young
HEADSET	Shimano 600, alloy, sealed mech.
SEATPOST	SR Laprade
SADDLE.....	Selle Italia Mundialita
FORK	Tange Mangaloy
COLOR.....	Rose
SIZES (cm)	48, 50, 53, 54.5, 56, 58, 60, 63
WEIGHT (lbs)	21.25
FRAMESET RETAIL ...	\$260
BICYCLE RETAIL.....	\$550

FITTINGS: Cable guides, down tube shifter bosses, front derailleur bracket, chain hanger, two sets of bottle bosses, and pump peg on appropriate sizes.



SR500

RACING—SR400

A high performance bicycle designed for serious competition as well as more casual sport riding. We've outfitted this outstanding racing frame with fine quality components, which include SunTour's Cyclone derailleurs, Gran Compe 400 brakes with aero-dynamic levers, and Italian made hubs from Miche.



1984 Olympic Gold medalist Connie Carpenter.

COMPONENT SPECIFICATIONS:

RIMS.....	Rigida 1320, 700c, alloy
HUBS.....	Miche, sm. fl.
SPOKES.....	15 gauge, stainless steel
TIRES.....	National Panaracer, 700c, presta
FRONT DERAILLEUR...	SunTour Cyclone, braze-on type
REAR DERAILLEUR...	SunTour Cyclone
SHIFTERS.....	SunTour Cyclone, down tube
CRANKSET.....	Sugino DGLP, 42/52
PEDALS.....	Miche 1203, toe clips and straps
FREEWHEEL.....	SunTour, 13/15/17/19/21/24
BRAKES.....	Dia Compe GC400N w/AC-250G aero-levers
HANDLEBAR.....	Belleri, alloy, Cannondale engraved
STEM.....	Nitto Young
HEADSET.....	Tange Levin
SEATPOST.....	Sugino SPKL
SADDLE.....	Selle Italia Mundialita
FORK.....	Tange Mangaloy
COLORS.....	Navy, White
SIZES (cm).....	48, 50, 53, 54.5, 56, 58, 60, 63
WEIGHT (lbs).....	22.5
FRAMESET RETAIL ...	\$235
BICYCLE RETAIL.....	\$450

FITTINGS: Cable guides, down tube shifter bosses, front derailleur bracket, chain hanger, two sets of bottle bosses, and pump peg on appropriate sizes.

SR400



TOURING—ST800

The Super Touring bicycle designed and built exclusively for long distance journeyers. We've combined the efficiency and comfort of our *Alumina Classic* Frameset with every important touring feature: Dia Compe cantilever brakes with quick release; half-step, granny gearing; Maillard Helicomatic hubs for fast freewheel removal; Kevlar belted touring tires; three bottle cages; front and rear Cannondale racks; and Esge fenders.



There is no better way to take in the wonderful sights and sounds of the countryside than touring by bicycle.

COMPONENT SPECIFICATIONS:

RIMS.....	Super Champion #58, 27", alloy
HUBS	Maillard Helicomatic, sealed, 36 hole, sm. fl.
SPOKES.....	14 gauge, stainless steel
TIRES	National Tourguard Kevlar, 27" X 1¼", presta
FRONT DERAILLEUR...	SunTour Superbe
REAR DERAILLEUR...	SunTour Superbe GT
SHIFTERS.....	SunTour Superbe, down tube
CRANKSET.....	Sugino TAT, 28/44/48
PEDALS.....	SunTour Superbe Pro Road, sealed, toe clips and straps
FREEWHEEL.....	Maillard Helicomatic, 13/16/20/24/30
BRAKES.....	Dia Compe 982 cantilever w/RGC200 levers
HANDLEBAR.....	Nitto, randoneur, alloy, Cinelli cork tape
STEM	Nitto Techomic
HEADSET	Stronglight Delta, sealed, alloy
SEATPOST	SunTour Superbe Road
SADDLE.....	Ideal 92, leather w/copper rivets
FORK	Tange, chrome-moly, low rider bosses
COLOR.....	Anthracite
SIZES (in).....	19, 21, 23, 25, 27
WEIGHT (lbs)	27
FRAMESET RETAIL ...	\$450
BICYCLE RETAIL.....	\$799.95

FITTINGS: Three sets of bottle bosses, down tube shifter bosses, low rider bosses, chain hanger, rack mounts, cable guides, and pump pegs on appropriate sizes.

ST800



TOURING—ST500

Half-step granny gearing provides true touring performance for climbing mountain passes or crossing long stretches of open prairie. The stylish Shimano 600 components add sporty function to the ST500 for around-town recreational riding and commuting.

The joy of travelling under your own power is one of the greatest rewards of bicycle touring.



COMPONENT SPECIFICATIONS:

RIMS.....	Rigida 1320, 27", alloy
HUBS	Shimano 600, sealed mechanism 36 hole, small flange
SPOKES.....	14 gauge, stainless steel
TIRES	Skinwall, 27" X 1 1/8", presta
FRONT DERAILLEUR...	Shimano 600
REAR DERAILLEUR...	Shimano 600 GT
SHIFTERS.....	Shimano 600, down tube
CRANKSET.....	Shimano 600, 28/44/48
PEDALS.....	Miche 1203, toe clips and straps
FREEWHEEL.....	Shimano, 13/15/18/21/25/30
BRAKES.....	Shimano 600, standard reach
HANDLEBAR.....	Belleri, alloy, Cannondale engraved
STEM	Nitto Young
HEADSET	Shimano 600, alloy, sealed mech.
SEATPOST	SR Laprade
SADDLE.....	Vetta, anatomic leather
FORK	Tange Mangaloy, low rider braze-ons
COLOR.....	Navy
SIZES (in).....	19, 21, 23, 25, 27
WEIGHT (lbs)	22
FRAMESET RETAIL ...	\$260
BICYCLE RETAIL.....	\$550

FITTINGS: Three sets of bottle bosses, down tube shifter bosses, low rider bosses, chain hanger, rack mounts, cable guides, and pump peg on appropriate sizes.

ST500



SPORT TOURING—ST400

The bicycle for cyclists looking for versatility as well as performance. Commute to work or school, take a leisurely recreational ride or a weekend tour, even compete in the local triathlon on this twelve-speed bicycle. The ST400 is equipped with SunTour LePree derailleurs, Rigida alloy rims, Sansin sealed mechanism hubs and stainless steel spokes.



The ST400 offers versatility and performance for cyclists who enjoy more casual riding.

COMPONENT SPECIFICATIONS:

RIMS.....	Rigida 1320, 27", alloy
HUBS	Sansin RE60, sealed mech., 36 hole
SPOKES.....	14 gauge, stainless steel
TIRES	Skinwall, 27" X 1 1/8", presta
FRONT DERAILLEUR...	SunTour LePree
REAR DERAILLEUR...	SunTour LePree
SHIFTERS.....	SunTour LePree, down tube
CRANKSET.....	Sugino DNJVP, 42/52
PEDALS.....	MKS AR1, toe clips and straps
FREEWHEEL.....	SunTour Perfect, 14/16/19/23/26/30
BRAKES.....	Dia Compe GX500N w/157 levers
HANDLEBAR.....	Belleri, alloy, Cannondale engraved
STEM	Nitto Young
HEADSET	Tange Levin
SEATPOST	Sugino SPKL
SADDLE.....	Vetta, anatomic
FORK	Tange Mangaloy
COLORS	Light Blue, Red
SIZES (in).....	19, 21, 23, 25, 27
WEIGHT (lbs)	25
FRAMESET RETAIL ...	\$235
BICYCLE RETAIL.....	\$450

FITTINGS: Three sets of bottle bosses, down tube shifter bosses, low rider bosses, chain hanger, rack mounts, cable guides, and pump peg on appropriate sizes.

ST400



ALL-TERRAIN—SM600/700

The SM600 and SM700 are built to go places no other bikes can, with SunTour's XC off-road component group, and a rugged Cannondale aluminum frame. The SM600 features dual 26 inch wheels and cruiser-type geometry for wooded trails and city streets alike. Cannondale's exclusive 24 inch rear wheel gives the SM700 a shorter wheelbase and greater traction that make it the premiere production off-road bicycle.

A downhill run through a Colorado mountain meadow after a long day of off-road biking.



COMPONENT SPECIFICATIONS:

RIMS.....	Araya 7X, alloy, black anodized
HUBS	SunTour XC, sealed, 36 hole, bolt axle
SPOKES.....	14 gauge, stainless steel
TIRES	National, full knobby, skinwall, 26" X 1 1/8"
FRONT DERAILLEUR...	SunTour XC
REAR DERAILLEUR...	SunTour XC
SHIFTERS.....	SunTour XC, thumbshifters
CRANKSET.....	Sugino TLP, 28/36/44
PEDALS.....	SunTour XC II, "bear trap"
FREEWHEEL.....	SunTour New Winner, 13/16/21/26/30
BRAKES.....	SunTour XC w/Dia Compe 282 levers
HANDLEBAR.....	Nitto, upright, alloy
STEM	SunTour XC
HEADSET	Stronglight Delta sealed alloy w/SunTour XC headbinder
SEATPOST	SunTour XC, extra long
SADDLE.....	Vetta, anatomic leather
FORK	Tange, chrome-moly
COLORS	Yellow, Green
SIZES (in).....	16, 18, 20, 22
WEIGHT (lbs)	28
FRAMESET RETAIL ...	\$299.95
BICYCLE RETAIL.....	\$699.95

FITTINGS: Two sets of bottle bosses, cable guides, rack mounts, and pump peg on appropriate sizes.

SM700



ALL-TERRAIN—SM500

A bike that's equally at home in the woods or on urban streets. The SM500 features a sloping top tube that provides extra clearance between you and the bike for serious off-road riding. SunTour's rugged new XC Sport component system delivers superior performance on road or off.



Splashing through a Rocky Mountain stream on a Cannondale Mountain Bike.

Photo courtesy of Pedal Pushers Bike Shop, Boulder, CO.

COMPONENT SPECIFICATIONS:

RIMS.....	Araya 7X, alloy, dual 26" wheels
HUBS.....	SunTour XC Sport, 36 hole, bolt axle
SPOKES.....	14 gauge, stainless steel
TIRES.....	National, full knobby, 26" X 2 1/8"
FRONT DERAILLEUR...	SunTour XC
REAR DERAILLEUR...	SunTour XC Sport
SHIFTERS.....	SunTour XC Sport, thumbshifters
CRANKSET.....	Sugino TGP, 28/36/48
PEDALS.....	SR Mtn Bike
FREEWHEEL.....	SunTour Perfect, 14/17/21/26/32
BRAKES.....	SunTour XC Sport w/Dia Compe 280 motorcycle style levers
HANDLEBAR.....	Nitto, upright, alloy
STEM.....	Kusuki MTRK-3
HEADSET.....	Tange Falcon, sealed
SEATPOST.....	Strong PM30 extra long
SADDLE.....	Brooks Europa
FORK.....	Tange
COLORS.....	Red, Anthracite
SIZES (in).....	16, 18, 20, 22
WEIGHT (lbs).....	29
FRAMESET RETAIL ...	\$260
BICYCLE RETAIL.....	\$550

FITTINGS: Two sets of bottle bosses, cable guides, rack mounts, and pump peg on appropriate sizes.

SM500



TOWN AND COUNTRY—SC400

Designed for city bicycling with gentle geometry for a soft, forgiving ride. The long wheelbase of the SC400 provides for especially stable and comfortable cycling. Moderate width tires cushion the bike and rider against city street bumps and the stones along your favorite dirt road. Upright handlebars and a soft saddle round out this truly functional bicycle, built for civilized (and fun) cycling.

The Town and Country bicycle brings back the joy of cycling you used to know as a kid.



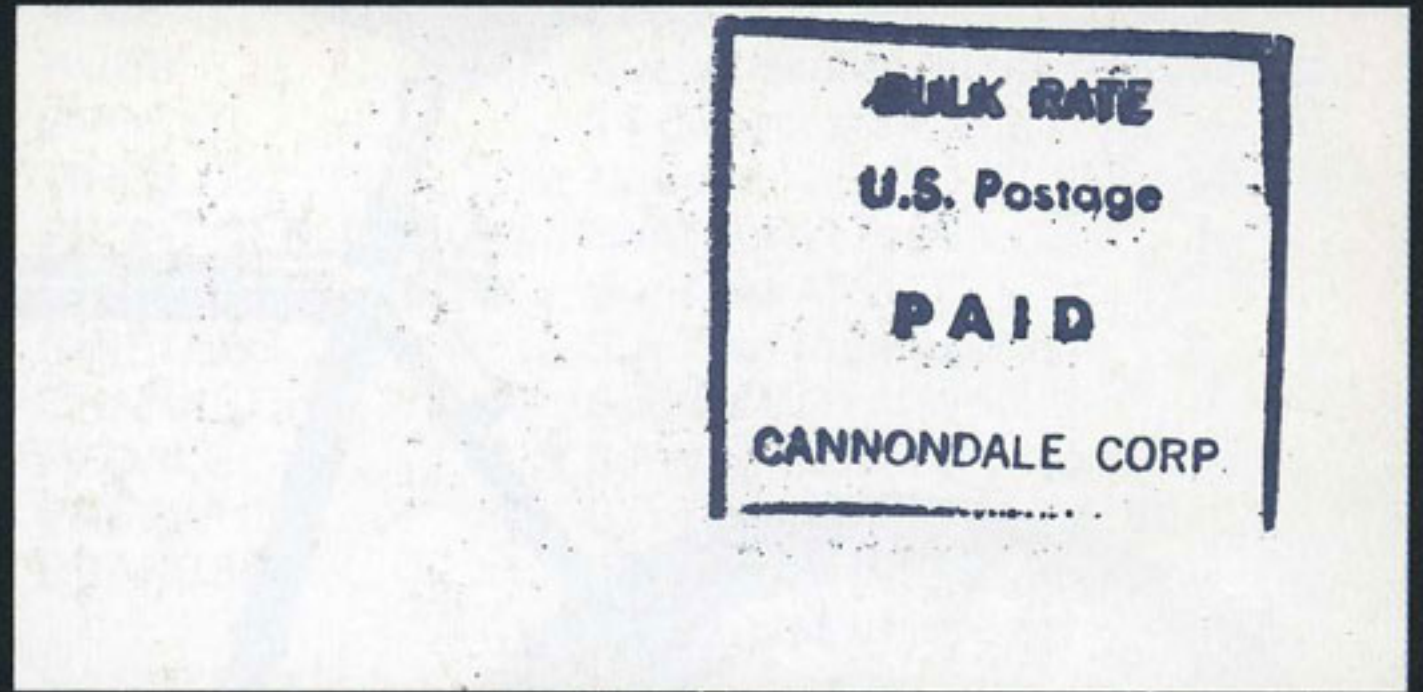
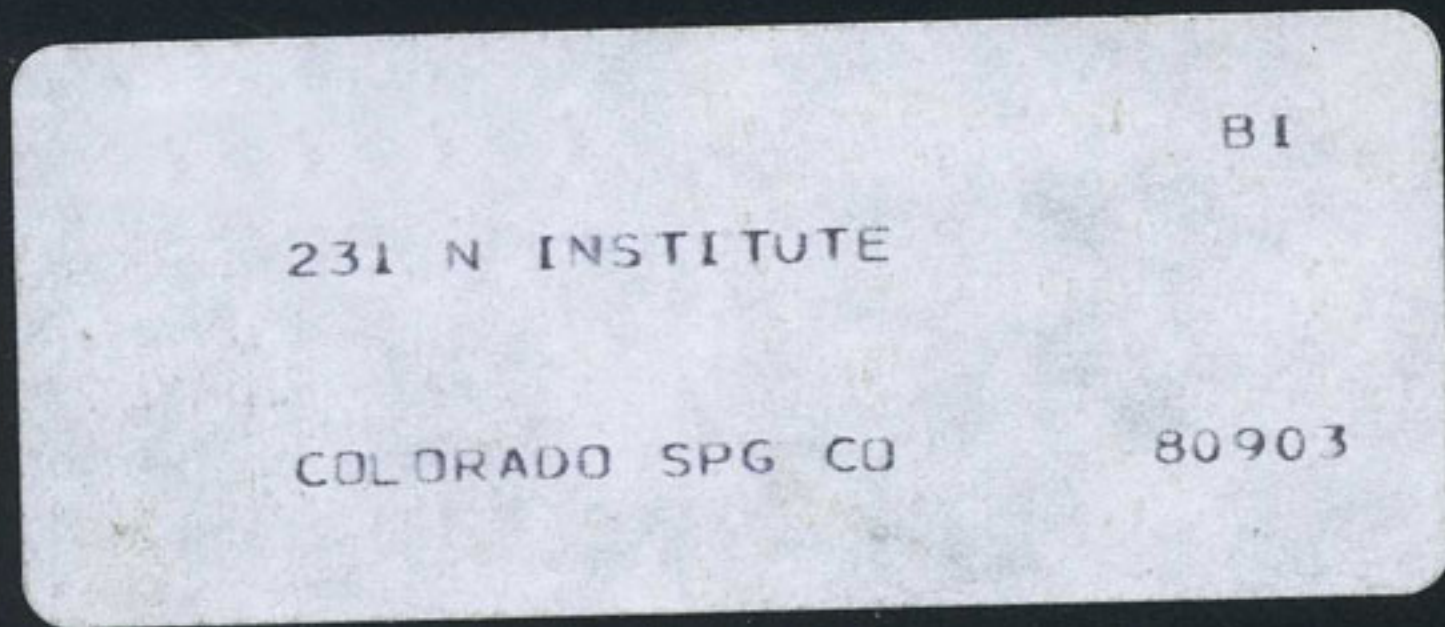
COMPONENT SPECIFICATIONS:

RIMS.....	Sun Metal, ultralight alloy, 26"
HUBS	Suzue, sealed, quick release front
SPOKES.....	14 gauge, stainless steel
TIRES	National, 26" X 1.5", skinwall
FRONT DERAILLEUR...	SunTour LePree
REAR DERAILLEUR...	SunTour ARGT
SHIFTERS.....	SunTour thumbshifters
CRANKSET.....	Sugino DGT, 40/50
PEDALS.....	SR w/integral reflectors
FREEWHEEL.....	SunTour, 14/17/21/26/32
BRAKES.....	Dia Compe 980 cantilever w/280 motorcycle style levers
HANDLEBAR.....	Kusuki, upright, alloy
STEM	Kusuki MTRK-3
HEADSET	Tange Mangaloy
SEATPOST	SR LaPrade
SADDLE.....	Brooks Europa
FORK	Tange Mangalloy
COLOR.....	Light Blue
SIZES (in).....	16, 18, 20, 22
WEIGHT (lbs)	26.5
FRAMESET RETAIL ...	\$235
BICYCLE RETAIL.....	\$399.95

FITTINGS: Two sets of bottle bosses, cable guides, rack mounts, and pump peg on appropriate sizes.

SC400





**CALL OUR TOLL-FREE HOTLINE:
1 800 BIKE USA**

Give us a call to find the location of your local authorized Cannondale bicycle dealer or if you have any questions or comments about any Cannondale products. (In Conn. or outside the continental USA, please call 1 (203) 838-4488.)

©1985 Cannondale Corporation,
9 Brookside Place,
Georgetown, CT 06829

