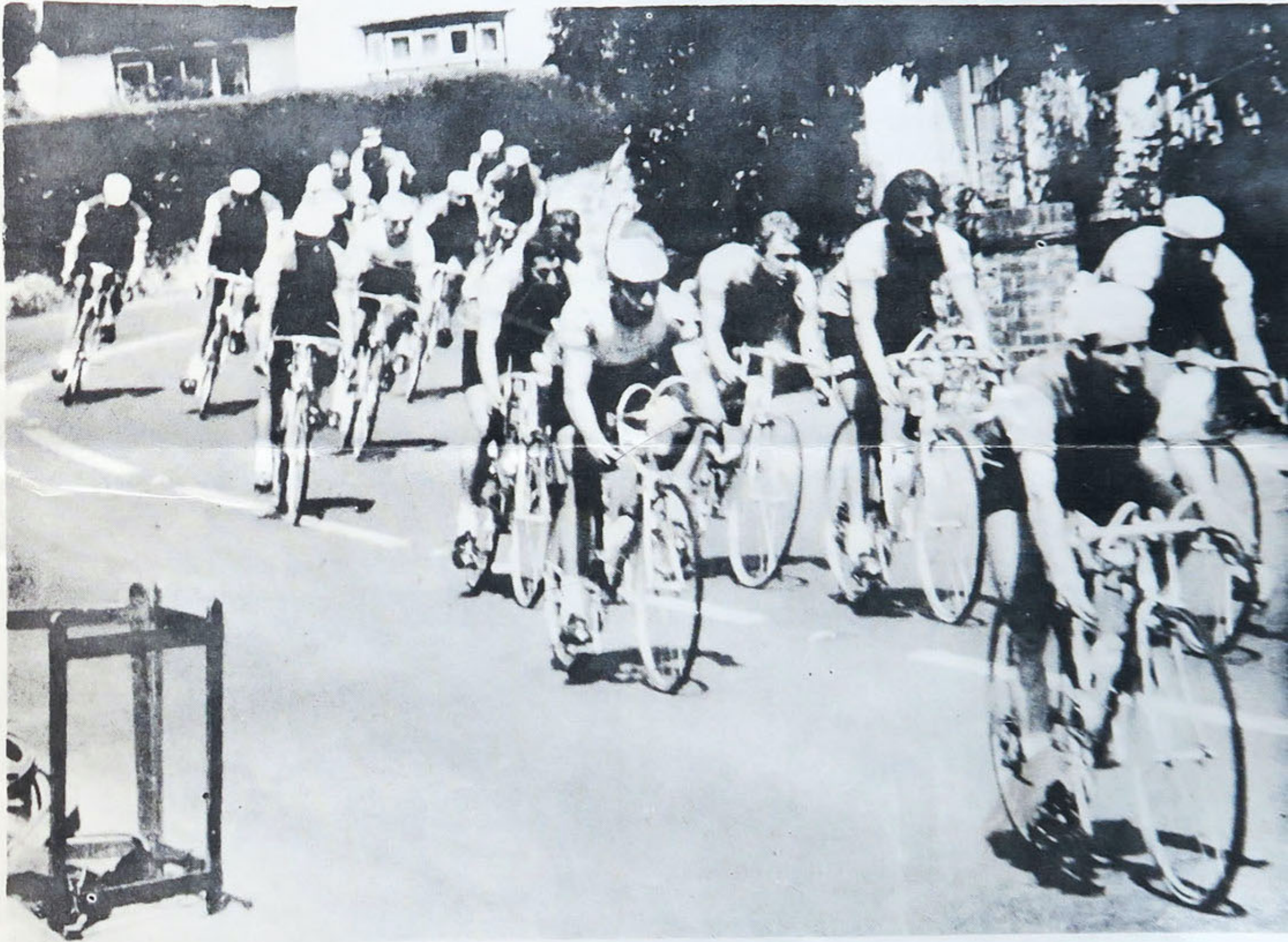


BOB JACKSON LIGHTWEIGHTS

Inc. JRJ cycles Ltd.

148 Harehills Lane Leeds LS8 5BD Tel. 622088



Britains Premier Lightweight

ALWAYS

First at the Finish

BOB JACKSON

RACE-WEIGHT FRAME SETS

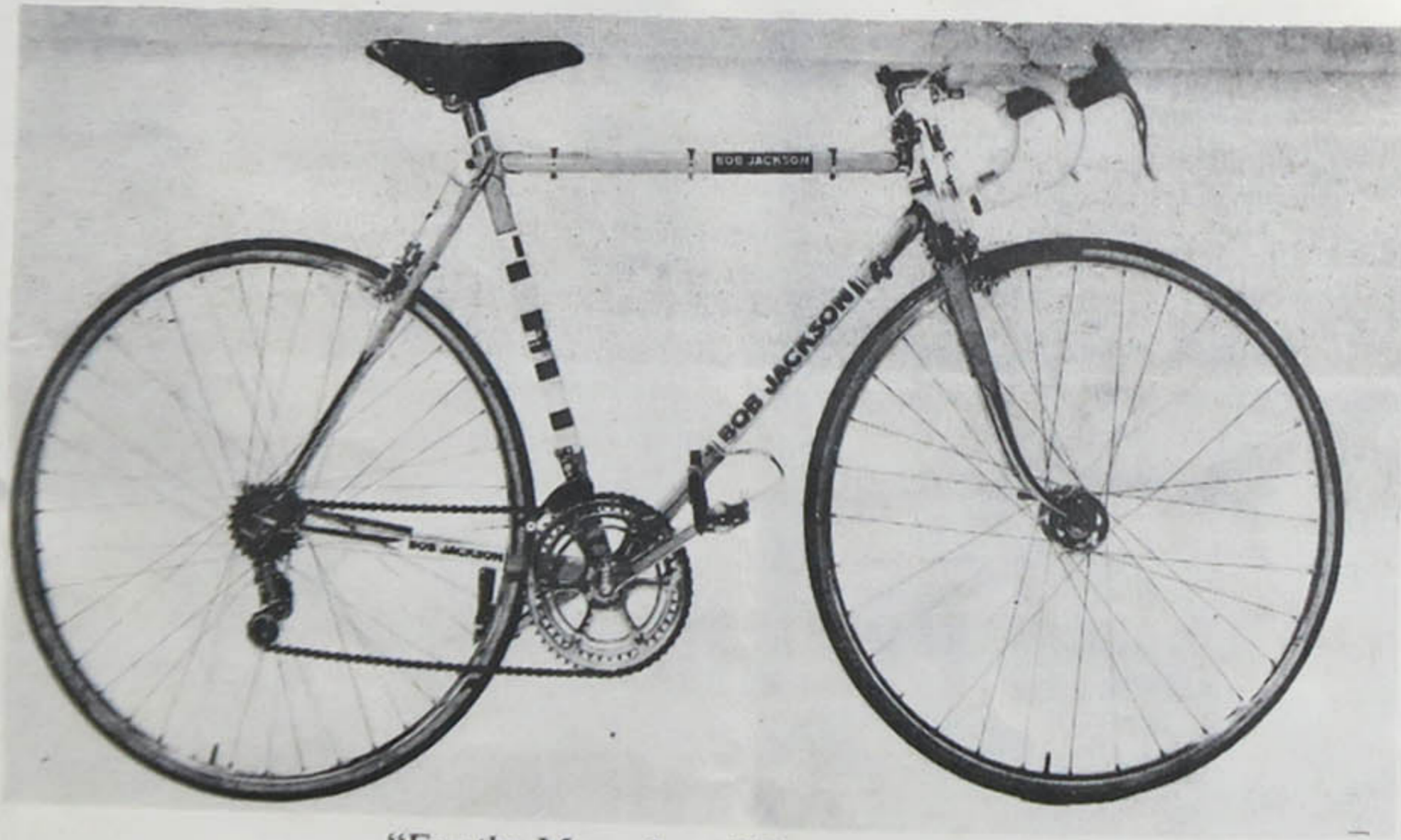
Model—OLYMPUS

SPECIFICATION

Reynolds lightest 531 D/B tubing throughout.
Size and half size to order.
73° angle Head, 73° angle Seat.
Prugnat Long Point lugs (illustrated).
Reinforcing tangs to inside fork blades, also at down tube and seat tube at bottom bracket.
Diamond reinforcements on rear bridges, lever stop on down tube.
2" Fork Rake, special oval to round blades, on Italia fork crown special feature cut. (Ref. 14 BIS)
Allan Key seat fastening with $\frac{5}{8}$ " seat stays.
Campagnolo front and rear dropouts.
Special Mafac brazed-on bridge to seat stays. (Extra)
Brazed-on T.A. bottle cage fittings on down tube (Extra)

FINISH

Enamel, Polychromatic or Flamboyant, with white head and panels as illustrated; Lugs picked out in any colour. Special B. J. transfers. BJ team finish if required.



"For the Man who will have the Best"

PRICE: see separate list.
Complete cycles price on application. To specification.

BOB JACKSON

Model—INTERNATIONAL

SPECIFICATION

Reynolds lightest 531 Double Butted tubing throughout.
Size to order.
Nervex Professional Lugs, finely filed.
Angles 73° Head 73° Seat.
FORKS—Special BJ Rake on Feature Cut Crown.
 $\frac{5}{8}$ or $\frac{7}{8}$ wrap over Seat Stays.
Campagnolo Front and Rear Dropouts.
Gear Eye on Chainstay and Lever Catch.
Alloy Seat Pin and Milremo Super Headset.

FINISH

Any colour, Flamboyant or Enamel, with contrast coloured head and seat tube panel. B.J. transfer mounted on top tube and seat tube. Lugs picked out in gold.



PRICE: see separate list.

BOB JACKSON

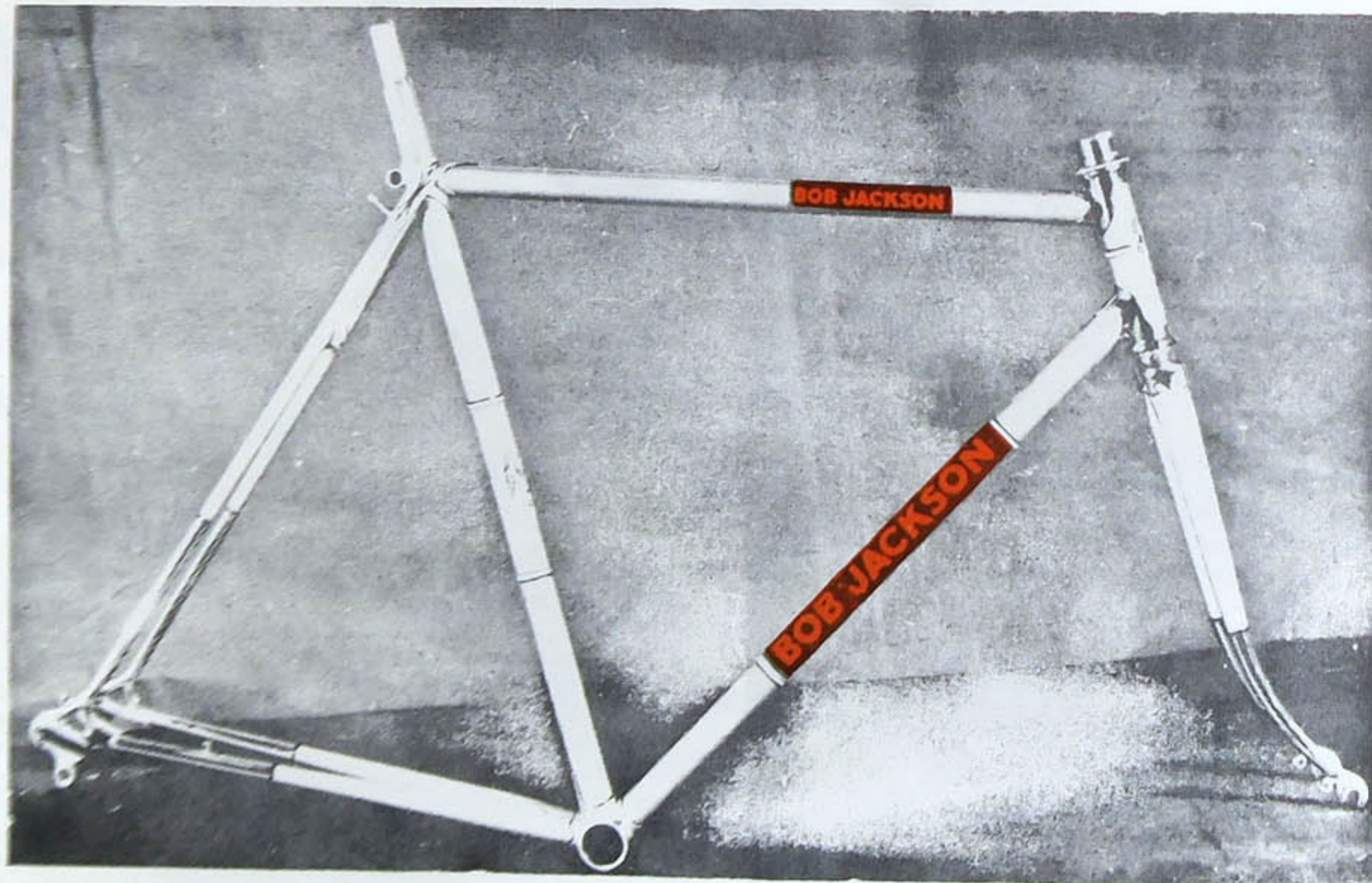
Model—GRAND PRIX

SPECIFICATION

Reynolds lightest 531 D/B tubing throughout.
Size to order.
Prugnat Italia long point lugs.
Angles 73° Head 73° Seat.
FORKS—2" rake. Special B.J. rake on Italia crown.
Campagnolo front and rear dropouts.
 $\frac{1}{2}$ " or $\frac{5}{8}$ " wrap over seat stays.
Gear Eye on Chainstay.
Mafac bridge extra. (See Price List).

FINISH

Any colour Flamboyant or Enamel, contrast head and seat tube panel. Lugs picked out in colour.



PRICE: see separate list.

BOB JACKSON

Model—VIGORELLI TRACK

SPECIFICATION

Reynolds 531 D/B tubing throughout
Size and half size to order.
Prugnat Long Point Lugs.
Angles 73° Head 73° Seat, Bracket Height 10 $\frac{3}{4}$ " or 11"
Forks 1 $\frac{3}{4}$ " Rake Round to Round. Special Fork Blades on Two Plate
Crown. Ref. RK. with Special reinforced Liners to Blades.
 $\frac{5}{8}$ " Heavy Seat Stays with Wrap Round Cluster.
Dropouts Campagnolo Track
This frame made with Bare Sprint Wheel clearance only, with reinforcing Plates fitted to Rear Bridges.

FINISH

Any colour Enamel, Polychromatic or Flamboyant finish, with contrasting coloured Head and Seat Tube Panels, Lugs picked out in Contrast Colours.



BOB JACKSON

Model—LUGANO TIME TRIAL

SPECIFICATION

Special, Italian Lightweight Tubing.
Size to order.
Prugnat Special Lightened Lugs.
Angles 73° Head 73° Seat or to order.
Special Italia 2" Round Fork Blades on Two Plate.
Special Crown Ref. RK.
Allan Key seat fastening.
 $\frac{2}{8}$ " Italia Seat Cluster (Fast Back).
Campagnolo Vertical Front and Rear Dropouts.
Brazed on Eye on Chainstay only.

FINISH

White Enamel with Black Band round Head, Narrow Black Bands on Seat Tube with vertical Seat Tube transfers in Red. Black Top Tube and Down Tube Panels with White Transfers. Lugs picked out in Red, or finish to your choice.



Chrome extra see list.

BOB JACKSON

Model—LUGANO CHAMPIONSHIP PURSUIT

SPECIFICATION

Extra Lightweight Tubing.
Size to order.
Prugnat Special Lightened Lugs.
Angles 73° Head 73° Seat or to order.
Special Italia $\frac{7}{8}$ " Round Fork Blades. $1\frac{1}{2}$ " Rake on Special Two Plate
Crown with Special Liners Ref. RK.
Allan Key Seat Fastening with $\frac{2}{8}$ " Italian Seat Cluster (Fast Back).
Special $\frac{1}{4}$ " Plate Track Ends (or Campag Extra).
Reinforced Bridge Liners at Rear.

FINISH

As Lugano Time Trial
or to your choice.



Chrome Plating extra.

BOB JACKSON

Model—VELODROME TRACK
A Superb Championship Class Track Frame

SPECIFICATION

Reynolds lightest 531 D/B tubing throughout.
Size to order.
Prugnat Long Point or Nervex Professional Lugs.
Angles 73° Head 73° Seat, Bracket Height 10 $\frac{3}{4}$ " or 11".
1 $\frac{3}{4}$ " Rake Fork, Round to Round special Fork Blades, $\frac{5}{8}$ " Heavy Seat stays with wrap round cluster.
Dropouts, Long rack 3/16" with reinforcing Side Plates or Campagnolo Track Extra. This frame made with Bare Sprint wheel clearance only.

FINISH

Any colour Enamel, Polychromatic or Flamboyant with contrast coloured head and seat tube panels. Lugs picked out in colour.



All chrome finish extra. See list.

BOB JACKSON

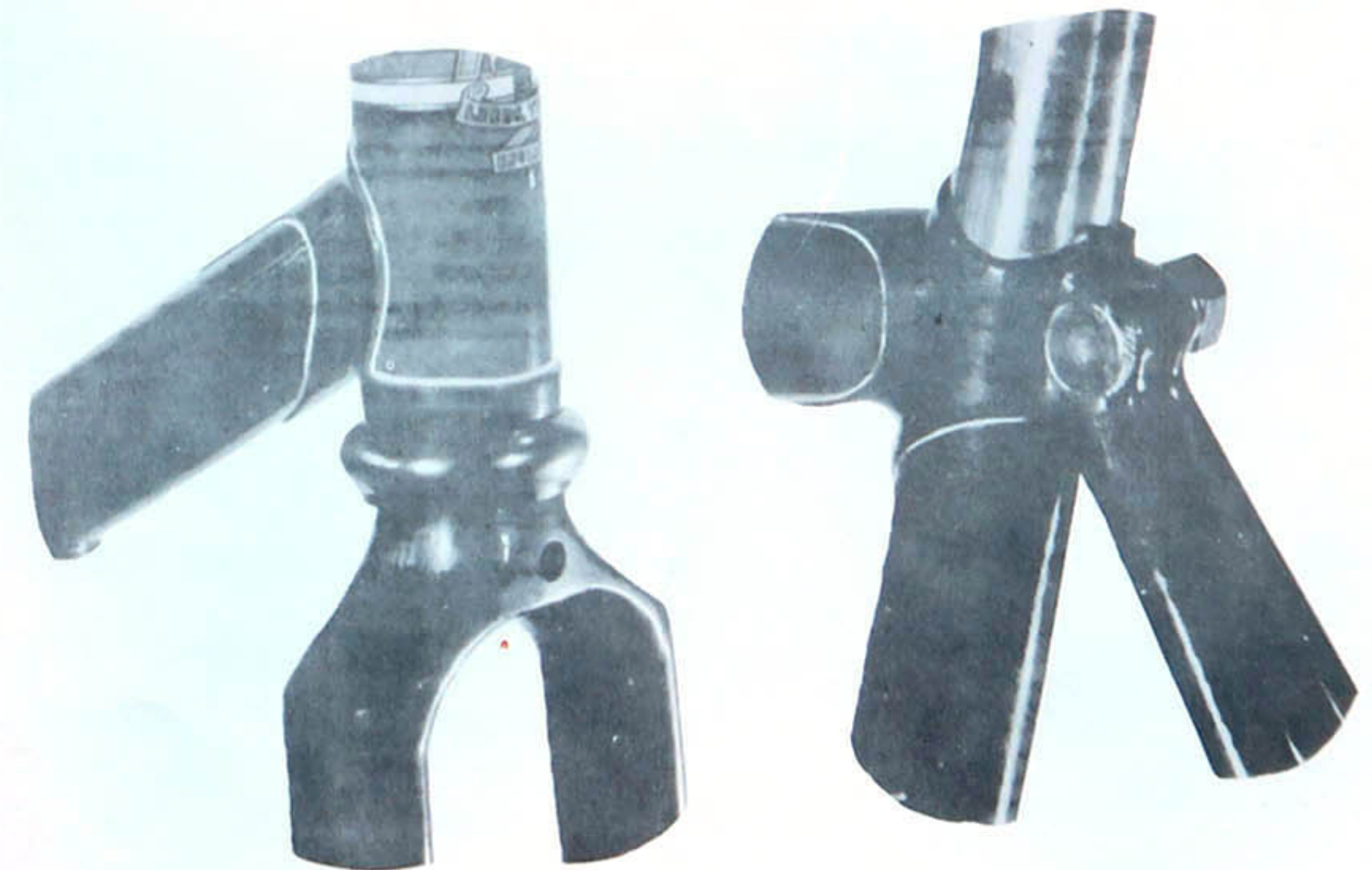
Model—MESSINA

SPECIFICATION

Reynolds lightest 531 Double Butted tubing throughout.
Size to order.
Prugnat Italia Long Point Lugs.
Angles 72° Head 72° Seat or 73° Head 73° Seat.
FORKS—2" rake. Special B. J. rake on Cinnetti Italia crown.
(Ref. P.17)
Campagnolo front and rear dropouts.
Special Italia seat cluster. Mafac bridge extra. (See list).

FINISH

Any colour Flamboyant or Enamel, contrast head, seat tube panels.
Lug picked out in colour.



PRICE: see separate list.

BOB JACKSON

Model—TOP BORO
Specially Designed for Time Trials

SPECIFICATION

Reynolds lightest 531 D/B tubing throughout.
Size to order.
Special Fretted Nervex Pro Lugs.
Angles 73° Head. 73° seat or to order.
FORKS— $\frac{7}{8}$ " round to round section on special crown. Ref. RK.
Campagnolo Vertical Dropouts.
 $\frac{7}{8}$ " Seat stays. Special seat cluster fastening to seat Lug.
Brazed-on Special Allan Key seat fastening unit.
Round oval Round chain stays.

FINISH

Any colour, Enamel, Polychromatic or Flamboyant with seat tube multi-panels. Lug picked out in colour.



BOB JACKSON

Model—OLYMPIAD

SPECIFICATION

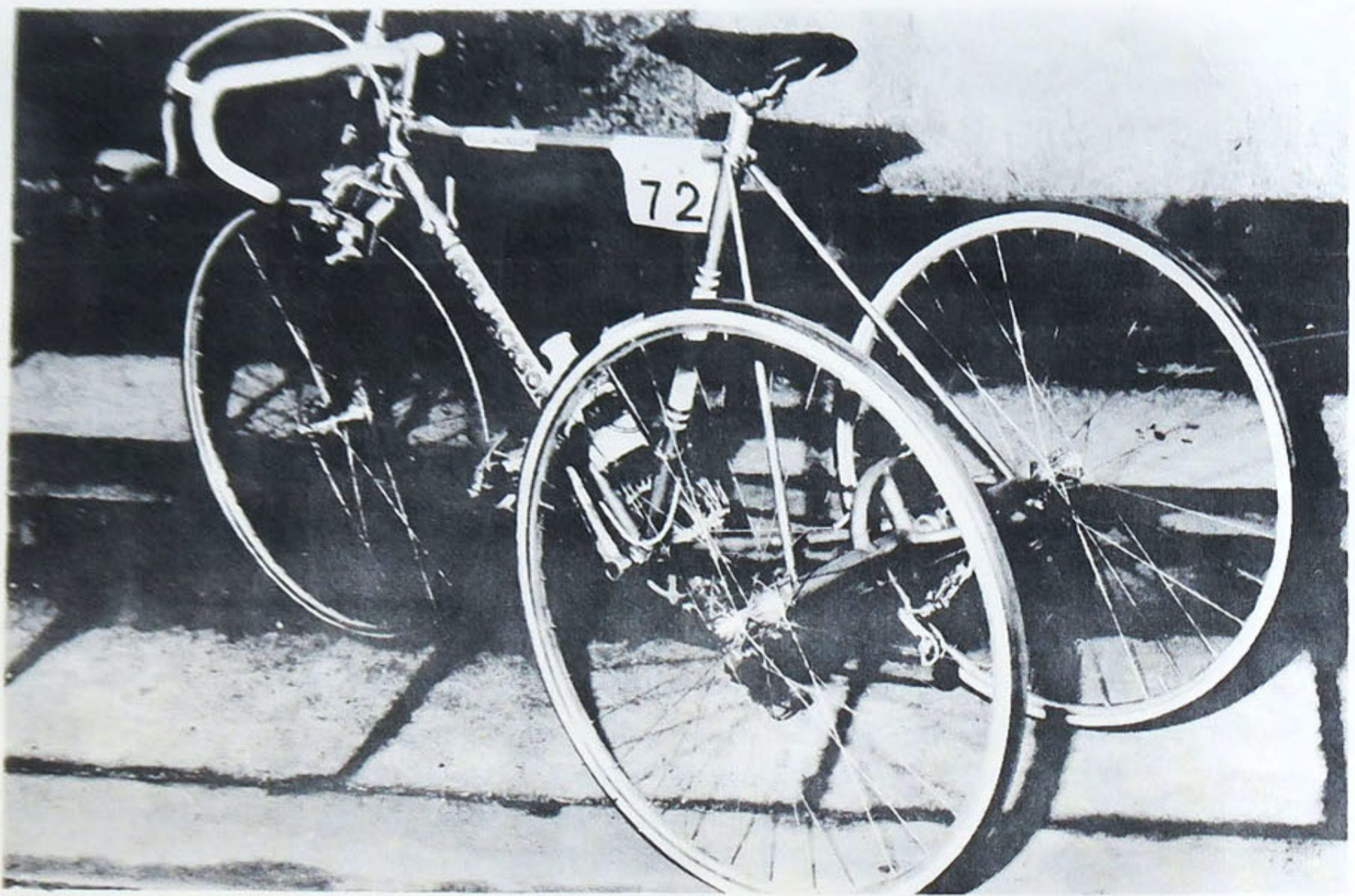
Reynolds 531 D/B tubing throughout.
Size to order.
Prugnat Italia Long Point Lugs (illustrated)
Angles 73° Head 73° seat.
Reinforced Tangs at down tube, seat tube and bottom bracket.
Diamond reinforcements on rear bridges, lever stop on down tube.
Special Italia 2" Fork Rake on Cinetti P.17 Fork Crown.
Allan Key seat fastening, $\frac{9}{16}$ " seat stays. Fast Back Cluster.
Campagnolo Front and Rear Dropouts.

FINISH

Any colour Enamel, Polychromatic or Flamboyant with contrast coloured head and seat tube panels. Lugs picked out in colour or BJ Pro Team Finish.



Price of specification of complete cycle on submitted details.

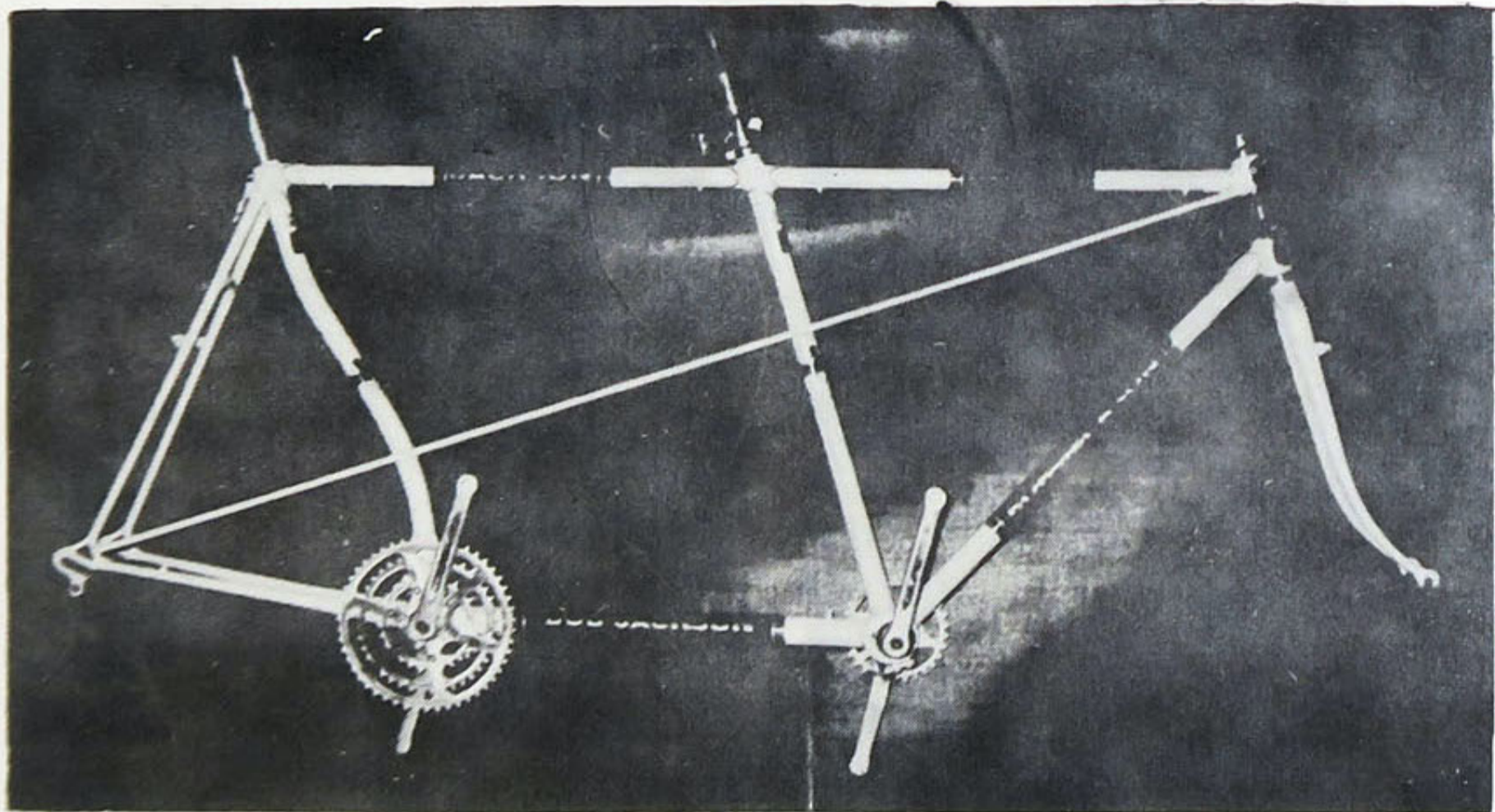


SPECIFICATION

Reynolds 531 D/B tubing.
 Size to order.
 Angles 72° Angle head seat
 72°.
 Prugnat Italia Long Point
 Lugs.

2 $\frac{1}{8}$ Rake over to Round
 Special Rake on Cinnetti.
 Crown Ref. p17. Campag
 Front Dropouts.
 Mafac Driver Brake Fittings
 and Racer Extension to Fork.
 Journal type Rear Axle, single

wheel drive with Campag
 Gear Hanger and Boss com-
 plete with small flange rear
 hubs.
 Finished to your Specification
 in Flamboyant, Enamel or
 Polychromatic.



Short Base Tandem Road Frameset only.

Size to order.
 531 Tubing D/Butted. Prugnat Lugs.
 Double Diamond Twin Lateral Construction.
 Brazed on Gear and Cantilever Brake Fittings.
 Eccentric Front Bottom Bracket.
 Finish to choice.
 T. A. Cross-over Drive Chainwheel sets extra.

MERLIN and BOB JACKSON

NEW FRAMES PRICE LIST

					Rec. Retail Price U.K.	
					£	p
MERLIN MODENA	33.50	
MERLIN MODENA PLUS	34.00	
MERLIN SAN MERENO	35.00	
MERLIN SAN MERENO VERTICAL	35.00	
MERLIN MADISON TRACK	34.50	
MERLIN OLYMPIC SPRINT	33.00	
MERLIN OLYMPIC ITALIA	32.00	
MERLIN INTERNATIONAL	35.00	
MERLIN MONIQUE	38.00	
BOB JACKSON OLYMPUS	38.50	
BOB JACKSON TOP BORO	37.90	
BOB JACKSON OLYMPIAD	38.50	
BOB JACKSON MESSINA	35.50	
BOB JACKSON GRAND PRIX	34.00	
BOB JACKSON VELODROME	35.50	
BOB JACKSON INTERNATIONAL	35.00	
BOB JACKSON RACING TRIKE	54.50	
BOB JACKSON VIGORELLI TRACK	38.00	
BOB JACKSON LUGANO ROAD TT SUPALIGHT	42.50	
BOB JACKSON LUGANO PURSUIT SUPALIGHT	42.00	
BOB JACKSON TANDEM SHORT BASE	68.50	
BOB JACKSON LADY LIGHTWEIGHT	34.50	
BOB JACKSON CYCLO CROSS TEAM FRAME	39.00	

EXTRAS

					£	p
Special Mafac Bridge to Seat Stays	each	1.20	
Criterion Brake Bosses	pair	1.25	
Campagnolo Lever Bosses—R.H. and L.H.	each	1.10	
Allen Key Seat Boss with Key	1.25	
T.A. Bottle Cage Fittings brazed on D/T	1.00	
Campagnolo Head Set	5.83	
Campagnolo Bottom Bracket Set Strada	6.16	
Stronglight Competition Head Set	3.60	
Campagnolo Seat Pin	5.54	
Zeus Head Set	3.95	

CHROME PLATING PRICES

					£	p
HALF FRONT AND REAR ENDS	5.40	
FRONT AND REAR FORK ENDS	4.20	
CROWN	1.20	
HEAD LUGS	3.20	
FRONT FORK ENDS ONLY, 7in.	2.60	
REAR FORK ENDS ONLY, 7in.	3.60	
ALL FRONT FORK	3.75	
FRONT FORK DROP-OUTS	2.20	
REAR FORK DROP-OUTS	2.60	
REAR FORK ENDS TO BRIDGES	5.00	
ALL SEAT TUBE—NEW FRAMES ONLY	2.50	
ALL FRAME AND FORK	15.90	

THE ABOVE PRICES SUBJECT TO ALTERATION WITHOUT PRIOR NOTIFICATION

ALL ABOVE PRICES SUBJECT TO 10% V.A.T. U.K. ONLY

V.A.T. Reg. No. 168 8930 11