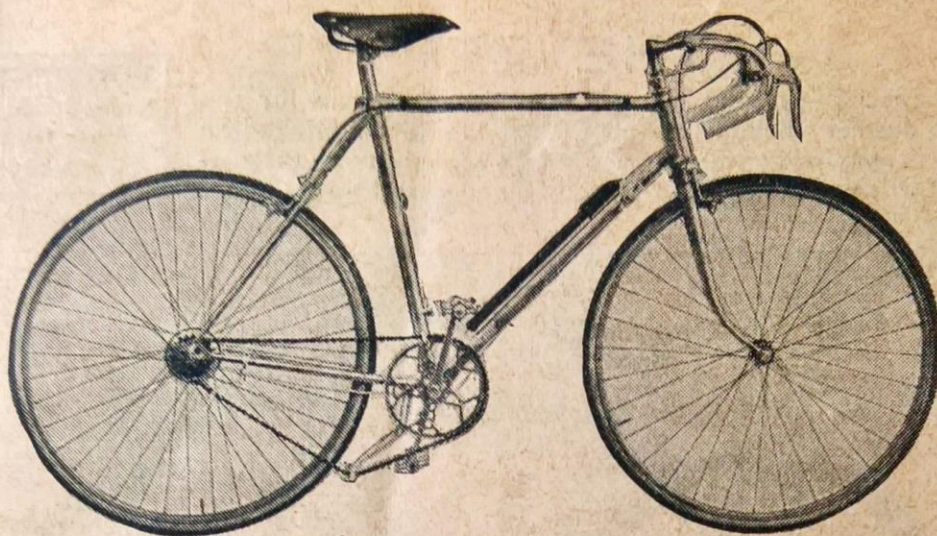


# OLYMPIC



Memories of Donington Park and the spectacular Frenchmen carrying all before them. This new "Olympic" model is based upon the latest up-to-date Continental designs. In the following specification you will find much that is new to the British game. The possession of one of these machines will definitely stamp you as an up-to-the-minute connoisseur of the fastest and best in racing "irons."

## SPECIFICATION

### FRAME.

22" with 22" top tube. Bracket  $11\frac{1}{4}$ ". Seat tube at 78 degrees with the ground. Parallel head tube. Wheelbase  $41\frac{3}{4}$ ". B.S.A. drop forged wide pattern crown giving ultra-adequate clearance. Plain seat and chain stays. H.M. or Chrome Molybdenum Tubing with solid cast lugs, which have been delicately feathered down. B.S.A. or Chater Lea fittings.

### CHAINWHEEL & CRANKS.

Genuine B.S.A. set, chromed.

### CHAIN.

Coventry "Elite"  $\frac{1}{2}$ " x  $\frac{1}{8}$ ".

### WHEELS.

27" Built by Holdsworth in Bayliss-Wiley Featherweight ( $14\frac{1}{2}$  oz.) hubs. Tabucchi Maple rims.

### TYRES.

Dunlop No. 3, Constrictor "Viper," Tabucchi "All-rounder" tubulars.

### SADDLE.

Brooks B17 Champion (Standard, Narrow or Sprinter) or Mansfield Ormond.

### BRAKES.

Two Tabucchi Duralumin featherweight calipers.

### HANDLEBAR.

Reynolds heavily-chromed any design on genuine Chater-Lea right-angle extension.

### GEAR.

Simplex latest "Super Improved" racing derailleur, giving any desired ratio. Wheel easily removed and replaced.

### PEDALS.

Genuine B.S.A. heavily chromed.

### FINISH.

Coslettised and finished in Continental Blue with panel effect in Red. Your own Club Colour bands on seat-tube. All usual parts heavily chromium plated, including fork and stay end tips.

**£15/15/0**

Cash, or Easy Payments

**DEPOSIT 40/-**

Twelve  
Monthly  
Payments of **26/10**

Approx. Weight 21 lbs.

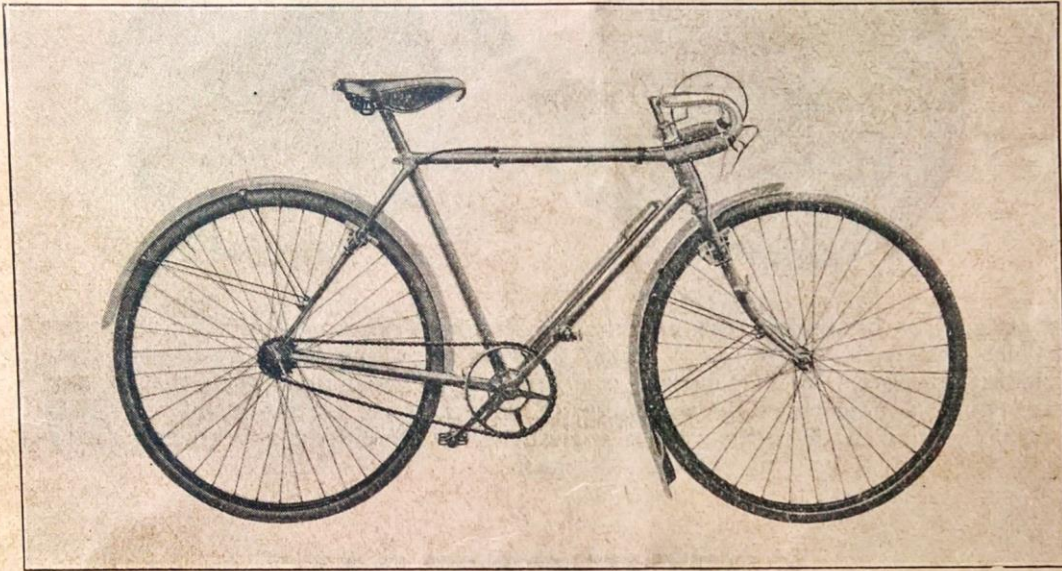
Brampton fittings, Williams C1000 Chainwheel  
and cranks, Webb solid centre pedals  
**£13/13/-**. Deposit **40/-** 12 payments of **22/10**

# LADIES' MODELS

## THE ZEPHYR

This is a Special Diamond Frame Model Built Especially for the Lady who desires a Speedy Machine. The Frame is Modelled on a Machine used by Mrs Holdsworth and has given every satisfaction both as regards Easy Running combined with Ideal Position.

**HIDUMINIUM**  
Saves 1½ lb. weight  
Costs 14/6 extra  
(See page 15)



Similar Equipment as Tornado (See page 5) (including High Pressure Rimes and Tyres) and also including Two Resilion Brake.. .. **£10 15 0**

## THE TYPHOON

An open frame machine with upright design including Russ-pattern front forks, and Rear Resilion Brake.

**HIDUMINIUM**  
Saves 1½ lb. weight  
Costs 14/6 extra  
(See page 15)



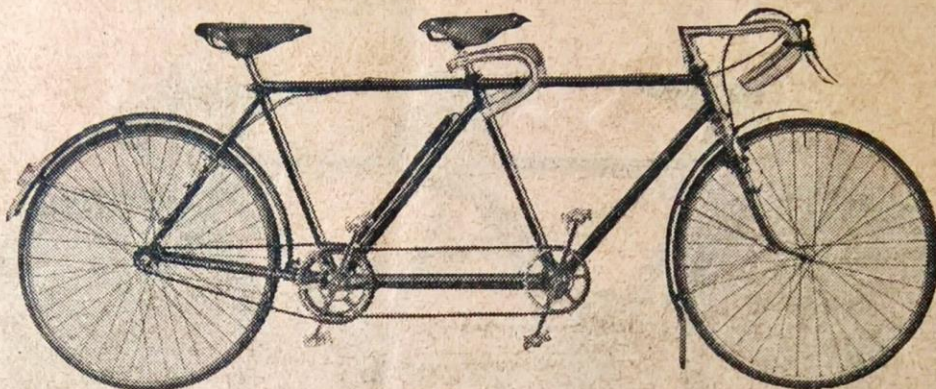
This machine is definitely a stride forward in Ladies design and will be the envy of all your club-members .. .. **£7 17 6**

## THE SHAWBURY

Same specification as Gents, but open frame .. .. **£6 15 0**

**Full specifications or suggestions  
willingly submitted on application.**

**PUTNEY "TRUE BLUE" TANDEM.**  
**RACE. 1½" CHAIN LINE.** (Registered Design No. 806077)



**Mind the "30" signs with this Job!!**

Fast, balanced and elegant, there is no doubt that the design of this tandem will be eagerly discussed. It has that great advantage, from the racing standpoint, of 1½" chain-line. This allows cycle hubs to be used, reduces weight, wind resistance and actually increases the "boiler room" output by destroying that treadmill effect so apparent when "all out." The rear rider is more over the bracket centre, and is more comfortably situated.

## SPECIFICATION

### FRAME.

Reynolds best quality "A" butted tubing, throughout, 18 gauge down tube, 20 gauge "drainpipe." Brampton lugs carefully filed down and cut away. "W.F.H." special Tandem crown with Russ pattern "D to round" blade. Wheelbase, 64". Note the weight, and bear in mind that nothing has been sacrificed in strength. Note the sturdy forward opening rear ends, lug work, and general finish. Bright parts chrome plated.

### CHAIN WHEEL & CRANKS.

Williams 3-arm 40, 40, 48th with 6½" cranks or to order.

### WHEELS.

B.W. No. 10 hub D.G. front and rear, built with Black 26" x 1¼" Endricks, and 12/14 S.B. spokes. Worthy cogs and rings—any sizes.

### TYRES.

Dunlop Black Road Racing. 26" x 1¼".

### BRAKES.

Resilion "A" Cantilever brakes front and rear.

### MUDGUARDS.

Bluemels' Black Featherweight with front extension.

### PEDALS.

Brampton Universal Race, Chromed.

### CHAINS.

Coventry roller ½" x ⅛".

### SADDLES.

Holdsworth B.17 design—"Champion" leather top.

### HANDLEBARS.

17" Shallow Highgate front and "Speen" 18" rear. Chrome plated on 2" or 3" extension. Or Shirley in Chrome.

### GRIPS.

Holdsworth pathgrip sleeving.

### EQUIPMENT.

Reflector, Pump and tracknuts.

### FINISH.

Black or Coloured Enamel. Gold or Silver finish. 7/6 extra. The whole frame positively rustproofed.

**£15/15/0**

Cash, or Easy Payments

DEPOSIT **£2**

Twelve monthly payments of **26/10**

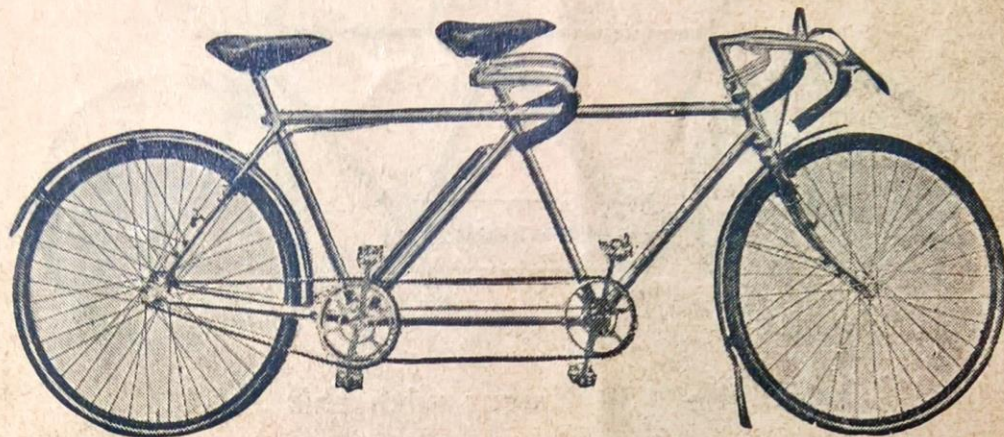
Approx. Weight, 44 lbs.

**With Cyclo 3-Speed £17/1/0**

EASY PAYMENTS

Deposit **£2/0/0** 12 monthly payments of **29/4**

## DOUBLE DIAMOND ROAD RACE TANDEM



The Clubman's joy. A really "nippy" job for the lads who know. All lugs lightened and brazed-on fittings. Weight 47 lbs.

### SPECIFICATION

#### FRAME.

Wheelbase, 63½". Top tubes, 21¾", built of Reynolds best quality "A" double butted tubing throughout. Brampton fittings cut away carefully, this tandem is all that can be desired for racing.

Look at the weight and bear in mind nothing has been sacrificed in strength. At the figure this new arrival demands admittance to the finest value class on the market. Note rear fork ends, "W.F.H." special design, note the lug work, and general finish.

Chromium finish to bright parts.

#### CHAINWHEEL & CRANKS.

Williams 3-arm chromium plated chain-wheel set. 44, 44, 46 × ⅛". 6½" cranks. "Worthy" Cogs and rings any sizes.

#### WHEELS.

Endrick rims 26" × 1¼", built with 13-15 gauge spokes. Brampton Hubs.

#### TYRES.

Dunlop Speed, 26" × 1¼".

#### BRAKES.

Two Resilion "A" Brakes.

#### MUDGUARDS.

Bluemels white "Featherweight."

#### PEDALS

Brampton Universal Race, chromium plated.

#### CHAINS.

Coventry, ½" × ⅛", front and rear.

#### SADDLES.

Holdsworth B17 design "Champion," leather top.

#### HANDLEBARS.

Front, 17". Triumph bar on 3" extension chromium.

Rear, 17" Speen bend on seat pillar clip. chromium.

#### GRIPS.

Holdsworth sleeve grip.

#### EQUIPMENT.

Reflector, Pump and Track Nuts.

#### FINISH.

Black XXX or plain colour enamel and rustproofed.

# £14/19/6

Cash, or Easy Payments

Deposit **£2**

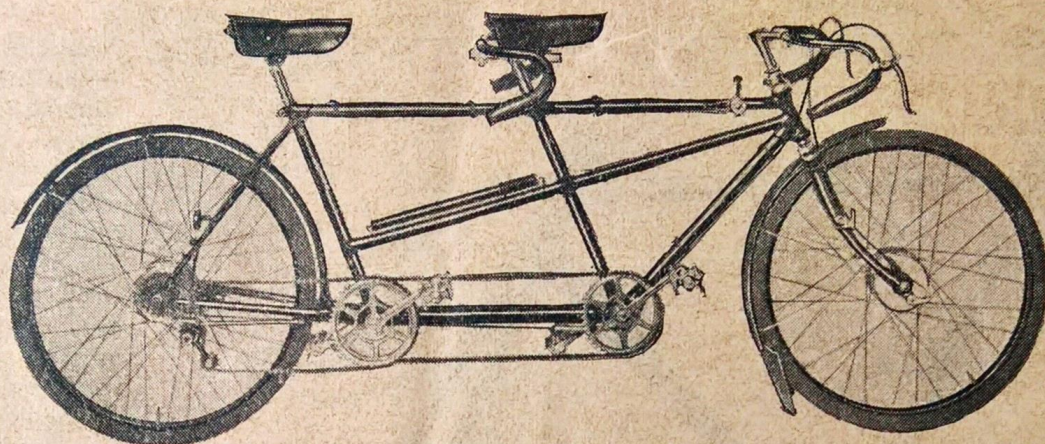
Twelve  
monthly  
payments of **25/5**

#### EXTRAS.

Gold or Silver Finish 7/6

Chrome Front Ends 6/6      Chrome Back Ends 6/6

# No. 2 TANDEM



Acknowledged the best 1935 model,—it's amazingly easy and silky running will ensure great favour for this model in 1936. Absolutely the finest value that money can buy in Touring tandems. Ideally suitable for Club riding, sound in build and equipment. LOOK at the specification :—

## SPECIFICATION

### FRAME.

Special design—as 1935. Wheelbase :  $65\frac{1}{2}$ " or to order. Holdsworth unique rear ends.

### CHAINWHEELS & CRANKS.

Special Williams 3-pin tandem set, direct drive.  $6\frac{1}{2}$ " cranks. Chrome.

### WHEELS.

"Worthy-well-built" transfer guaranteed wheels. 12/14 gauge. S. butted. English black spokes, with Dunlop  $26" \times 1\frac{1}{4}" \times 1\frac{3}{8}"$ . Endrick Countersunk spoke hole rims, especially made to suit the hub brakes used.

### HUBS & BRAKES.

The front hub is the peerless Sturmey Archer Tandem hub and brake. Smooth and efficient it is fitted with the famous "Torgue" arm to distribute the braking strain over the whole forks. The rear brake is the 1936 Super Cyklbrake 5" brake diameter : Cable-cum-rod action, no straining or broken cables can arise, and easy powerful braking action is assured. Will hold you safely on "1 in 4." Has the famous compensating spoke flanges, which make for a stiffer wheel, and is specially screwed for the derailleur 3-speed.

### TYRES.

Dunlop Special tandem section.  $26" \times 1\frac{1}{4}"$  or  $1\frac{3}{8}"$ .

### MUDGUARDS.

Bluemels Featherweight, in black, with front extension in one piece. All eyes brazed on !

### GEAR.

Cyclo 3-speed gear. 58-72-85 with water-proof control, and brazed on bracket.

### CHAINS.

Coventry Roller chains.  $\frac{1}{2}" \times \frac{1}{8}"$ .

### SADDLES.

Terry Clubman or Holdsworth "Champion" leather top.

### HANDLEBARS.

We fit 17" Marsh level bend on 2" or 3" adjustable extension to the front, and 18" ditto in "T" seat-pin clip to the rear. Both bars are celluloid covered. If different bends or clips are desired, we are only too pleased to supply.

### FINISH.

Rustproofed by positive process and four coats special Black, giving a fine and very durable finish. All usual bright parts heavily chrome plated. Tecaletit Grease force feed throughout. "The Lubricating system that gets there !"

# £16/16/0

Cash or Easy Payments

DEPOSIT **£2**

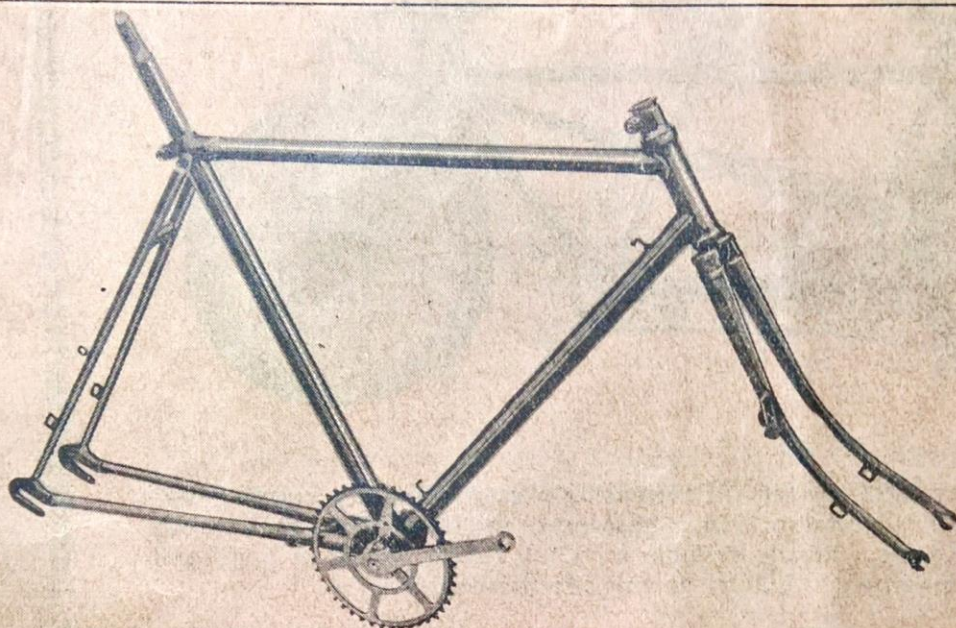
Twelve Monthly  
payments of **28/10**

Approx. Weight 47 lbs.

Fitted STURMEY "K.T." Hub £16/11/0  
,, Freewheel & Hub-brakes £15/10/0

# FRAMES

WHEN a frame and forks only are required, I shall be pleased to supply. Such frames receive exactly the same attention as complete cycles.



Supplied complete beautifully finished with chromium plated head and bracket interiors, chain wheel, cranks and straight seat pin. Tecalet grease lubrication throughout.

Special designs and specifications quoted for by return.

All have brazed on mudguard eyes, pump pegs, chain rest, reflector eye and detachable and adjustable Chater Lea fork lamp bracket. All frames built to order.

TYPHOON. Ladies or Gents .. .. .	Cash	£3/15/-
STELVIO .. .. .	"	£4/17/6
CURLEW .. .. .	"	£4/19/6
TORNADO .. .. .	"	£5/5/-
CYCLONE. Road, Path. Brampton .. .. .	"	£5/5/-
CYCLONE. Road, Path. Chater Lea .. .. .	"	£6/-/-
CYCLONE. Road, Path. B.S.A. .. .. .	"	£6/5/-
STANDARD. Chater Lea .. .. .	"	£5/15/-
STANDARD. B.S.A. .. .. .	"	£6/-/-

Finishes are exactly the same as Complete Models by the same names and following is a list of extras :—

De Luxe Flamboyant finish on highly polished nickel plating. Any colour. A lasting finish of great lustre .. .. .	20/-
Chrome front fork tips where not included .. .. .	6/6
Chrome rear stay ends, where not included .. .. .	6/6
Chrome front forks complete, extra to chrome fork tips .. .. .	6/-
Silver, Gold or Any Colour enamel finish, where black is standard .. .. .	5/-
Flamboyant finish on heavy nickel plating, where not included .. .. .	10/-

TANDEM frames and forks complete from **£10**, let me quote for your specification.

FORKS Only :—

	Black	Nickel plated ends and crown	All Nickel	Chrom. plated ends and crown	All chrome.
BRAMPTON .. .. .	14/6	18/-	22/-	21/6	27/6
B.S.A. .. .. .	16/-	19/6	23/6	23/-	29/6
CHATER .. .. .	16/-	19/6	23/6	23/-	29/6

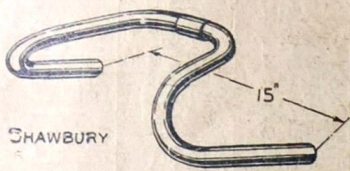
All prices include brazed on mudguard eyes.

Chater-Lea adjustable lamp bracket brazed on—1/- extra. Please state which side.

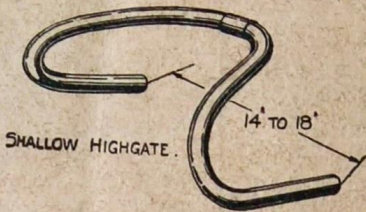
**HOLDSWORTH CYCLES are despatched free Carriage paid to any address in GREAT BRITAIN**

# HANDLEBARS

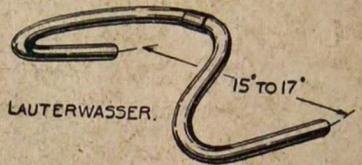
HERE are illustrations of the most popular bends to assist you in your choice. These bends are made specially for "Holdsworth" and are confidently recommended. We also supply Genuine OPPERMAN, Triumph, Sibbit, Bailey, Southall Special Bends and Anelay and Middleton Flats.



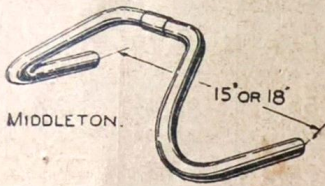
SHAWBURY



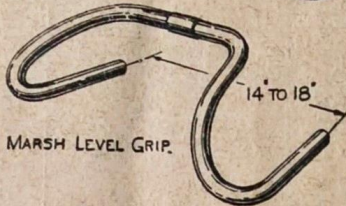
SHALLOW HIGHGATE.



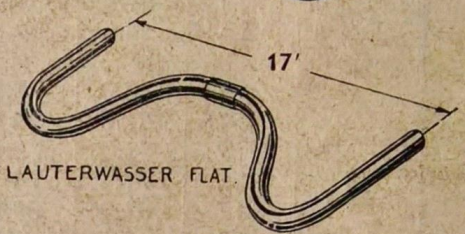
LAUTERWASSER.



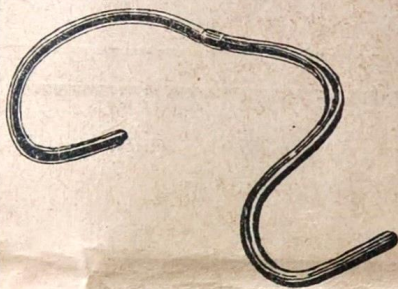
MIDDLETON.



MARSH LEVEL GRIP.

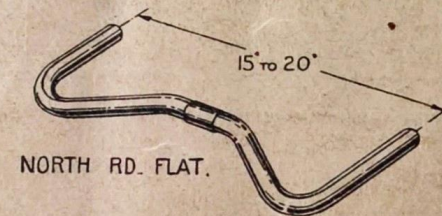


LAUTERWASSER FLAT.

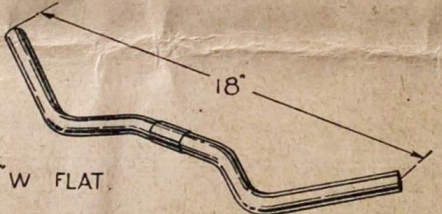


Improved  
**"SPEEN" BEND**

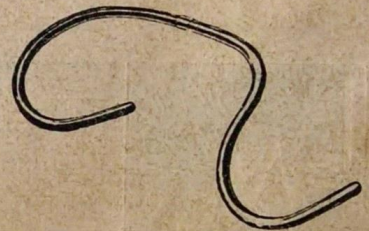
15" wide, 5½" deep, 7" throw-forward. Note slight rise from centre



NORTH RD. FLAT.



W FLAT.



Latest Bend  
**"BULLA"**

An exact copy of the actual bend by the crack Continental Max Bulla.

## HIDUMINIUM RR 56 WEIGHT SAVERS

This wonderful metal has definitely come to stay. It is quite as strong as steel and very much lighter.

Here is a special offer to enable you to fit Hiduminium to your new cycle.

The following five Hiduminium fitments will be substituted for steel on any model for an extra cost of only 14/6.

Handlebar .. ..	11½ oz.	Saving ..	12½ ozs.
Extension .. ..	5 ozs.	" ..	4½ ozs.
Seat-pin .. ..	4 ozs.	" ..	4 ozs.
Lamp-bracket .. ..	½ oz.	" ..	1 oz.
Wing-nuts (set of 4) ..	2 ozs.	" ..	2 ozs.

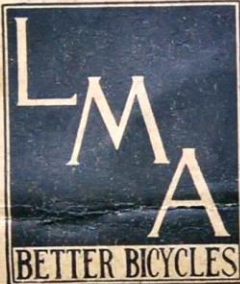
TOTAL WEIGHT SAVING 1½ lbs, !! EXTRA COST ONLY 14/6.

my Works carefully packed in Crates.  
T BRITAIN and NORTHERN IRELAND.

# GEAR TABLE

Number of Teeth on Chain-wheel	Number of Teeth Hub Cog	Diameter of Wheel.		
		26 in.	27 in.	28 in.
42	13	84.0	87.4	90.5
	14	78.0	81.0	84.0
	15	72.8	75.7	78.4
	16	68.2	70.8	73.5
	17	64.3	66.7	69.2
	18	60.6	63.0	65.3
	19	57.5	59.6	60.9
	20	54.6	56.7	58.8
44	13	88.0	91.3	94.8
	14	81.7	84.8	88.0
	15	76.2	78.5	82.1
	16	71.5	74.2	77.0
	17	67.2	69.8	72.4
	18	63.5	66.0	68.4
	19	60.2	62.5	64.8
	20	57.2	59.4	61.6

Number of Teeth on Chain-wheel	Number of Teeth Hub Cog	Diameter of Wheel.		
		26 in.	27 in.	28 in.
46	13	92.0	95.5	99.0
	14	85.4	88.7	92.0
	15	79.7	82.1	85.8
	16	74.7	77.6	80.5
	17	70.3	73.0	75.7
	18	66.4	69.0	71.5
	19	63.0	65.4	67.8
	20	59.8	62.0	64.4
48	13	96.0	99.7	103.4
	14	89.1	92.5	96.0
	15	83.2	86.4	89.6
	16	78.0	81.0	84.0
	17	73.4	76.2	79.0
	18	69.3	72.0	74.6
	19	65.7	68.2	70.7
	20	62.4	64.8	67.2



W. F. HOLDSWORTH is one of the founder members of the Light-weight Makers Association. This Association is composed only of actual manufacturers of Light-weight cycles. You can be certain, therefore that HOLDSWORTH cycles and tandems are made throughout in HOLDSWORTH WORKSHOPS.

## Guarantee

**I** Guarantee that all Cycles and Tandems are built in my own workshops and are of first class design and made from the very best selected materials.

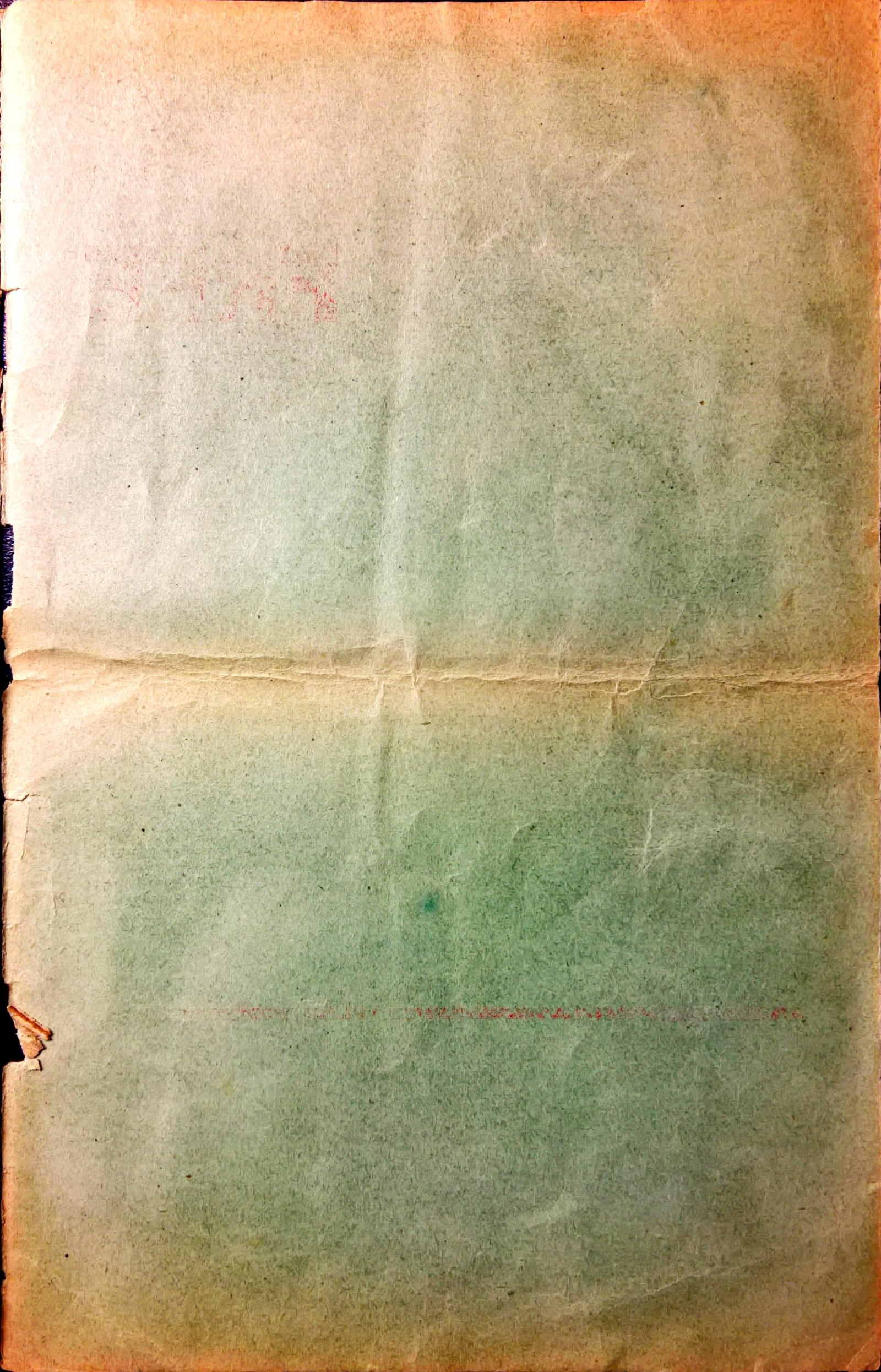
Should any defect which is due to faulty building appear in any machine within three years of date of purchase, which has not been caused by fair wear and tear, misuse, accident or neglect, I will make good such defect free of all charge.

I do not hold myself responsible for any consequential damage or expense which may arise from the result of defective material or workmanship.

It is understood that I accept no responsibility for fittings such as Tyres, Saddles, Brakes, Hubs, Chains, etc., which are usually the subject of separate guarantee from the makers.

*W. F. Holdsworth*





# SEND FOR THIS BOOKLET

*its*

# FREE



W. HOLDSWORTH  
HOLDSWORTH & SON LTD.  
OXFORD STREET  
LONDON  
CYCLE & MOTOR CYCLE DEPOT

**This Booklet is the most comprehensive list of all cyclists' requirements, whether for self or cycle, ever issued.**

**You cannot afford to be without a copy if you mean to make the best of your cycling.**

**Ladies have a special issue edited by Mrs. Holdsworth.**